



Which Hitch?

Hornet ATV/UTV Specialty Receiver Hitches

Intrinsic Minds, LLC (branded Hornet Outdoors) manufactures receiver hitch products for the ATV/UTV market as well as the Auto/Truck market. Hitches manufactured by Intrinsic ALL solve problems and improve functionality that other hitch manufacturers do not address. Many/most are patent pending and all are Made in USA at this time which allows for more reliable delivery of products as compared to products manufactured in China. Hitch products are all made in Minnesota and Colorado.

Background

All autos and trucks (pickups) have a receiver that terminates nearly flush with the back bumper. ATV/UTV receivers are dissimilar in that they terminate near the rear differential generally located forward of the rear bumper or bed requiring that the hitch be extended. Additionally, ATV/UTV receivers are lower, requiring that virtually all hitch applications be raised.

Another unique requirement of ATV/UTV's is that hitches are most often used for "non towing" applications such as spare tire carriers, hitch cargo carriers, feeders, spreaders, tool boxes, etc so it's necessary to be able to raise and extend the receiver, not simply provide an adjustable ball hitch.

Likewise, in the truck/auto market receiver hitches often have to be raised or lowered depending on the application. Autos and Vans receivers are low, making it difficult to attach cargo carriers, bicycle racks etc and lifted trucks require the receiver to be lowered.

Hornet Outdoors manufactures a wide variety of specialty hitches. This guide will provide you with a brief description of each.

Click on any Title and we will take you directly to that page.

[U-4047 ATV/UTV Spare Tire Mount](#)

The U-4047 mounts the wheel on a low-profile angled bracket to minimize protrusion from your vehicle. Best suited for ATV/UTV equipped with 2" Receiver Hitch.

The U-4047 is available in 3 different lengths making it available for nearly every make and model of UTV on the Market.

Curved lower negates ground hang-up



[U-4048 ATV/UTV Spare Tire Mount](#)

The U-4048 mounts the wheel vertically with increased clearance from the mount post to accommodate wheels with deeper inset than the standard U-4047 Receiver Hitch Spare Tire Mount.



U-4100-2 ATV/UTV Spare Tire Mount

The U-4100-2 mounts the wheel on a low-profile angled bracket to minimize protrusion from your vehicle and features a lower section with less rise and a shorter spare tire mount post than our other Spare Tire Mounts. This mount is suitable for ATVs and UTVs where the receiver hitch is located directly under the back of the bed.



U-4063 1 1/4" ATV/UTV Receiver Spare Tire Mount

This Spare Tire Mount features a 1 1/4" lower component to accommodate units with small receivers. Converts to 2" at the spare tire mount. Best Suited for Polaris RZR's and many of the most popular ATV's that are equipped with a 1/4" Receivers.



U-4044 ATV/UTV Receiver Hitch Riser

Receiver Hitch Riser extends your ATV or UTV receiver hitch by 14" to clear the rear of the vehicle and raises it by 8" for compatibility with 2" receiver hitch accessories.



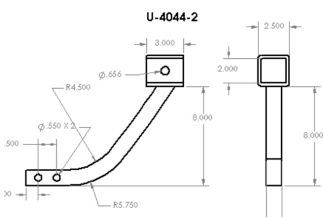
U-4043 ATV/UTV Adjustable Receiver Hitch

An Adjustable Receiver Hitch with an extended 2" female receiver hitch for standard 2" receiver hitch access. Adjusts vertically from a 12" to 20". Horizontal adjustment in 1.5" Increments. Ideal of applications where you need an adjustable connecting point such as towing, feeders, spreaders and cultivators.



U-4044 2 ATV/UTV Receiver Hitch Riser/Converter

Designed specifically for the UTV Sport and ATV Market this receiver features a curved lower to negate ground hang-up, raises the hitch point and converts the 1 1/4" receiver to 2".



NEW PRODUCT

U-6043 1 1/4" Adjustable Receiver Hitch

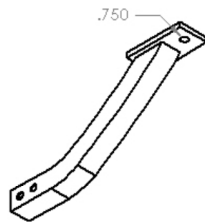
This Adjustable Receiver Hitch is compatible with any standard 1-1/4" vehicle receiver hitch and all standard 2" receiver hitch accessories.



U-4044 FP ATV/UTV Receiver Hitch Riser and Towing Tongue

Features 1 1/4" Receiver Hitch, Curved Lower to negate ground hang-up and two holes on the Tow Plate; a 1/2" hole and 1" hole so it can be used to tow a Farm Cart or install a Ball Hitch.

NEW PRODUCT



U-5000 Versa Jack

The Hornet Outdoors Universal Quick Lift Jack was designed for off-road ATV/UTV use and general purpose Trailer/Farm Jack. It is lightweight, has a high capacity and long extension range, and is simple to use. Operate with the included crank handle, or remove the handle and use a ratchet or cordless drill.



U-4052 ATV/UTV Dual "Piggyback" Hitch Extender Short

The upper 2" female receiver lets you use one of our Receiver Hitch Spare Tire Mounts while the lower 2" female receiver is available for towing or other use.



U-4051 ATV/UTV Hitch Extender Short

The Hitch Extender provides 4-1/2" of extension if you have a receiver hitch mounted accessory that doesn't quite clear the rear of your vehicle. Works best on UTV's with a forward receiver such as Polaris Ranger, Can Am Defender and Yamaha Viking.



U-4053 ATV/UTV 1 1/4" to 2" Hitch Adapter

This Hornet Outdoors Receiver Hitch Adapter was designed specifically for ATV/UTV use and is extremely short - it extends the hitch just 4-1/2".



Hitches and Hitch Products Designed for Truck, Auto and RV Use

U-4800 Heavy Duty Spare Tire Mount

The U-4800 mounts the wheel vertically with increased clearance from the mount post to accommodate wheels with deeper inset than the standard U-4100 Receiver Hitch Spare Tire Mount. Ideally suited for Pickup Trucks and RV's with wheel/tire weights nearing 100 lbs.



U-4100 Heavy Duty Spare Tire Mount

The U-4100 mounts the wheel on a low-profile angled bracket to minimize protrusion from your vehicle. Wheels with deep inset may require the longer mounting bracket. Best Suited for Trucks and Vehicles with Heavy Wheel/tire combinations that weigh #70 lb range and above.



U-4200 Heavy Duty Adjustable Receiver Hitch

The popular U-4200 Adjustable Receiver Hitch is a heavy duty version of our U-4043 ATV/UTV Adjustable Receiver Hitch Designed for on highway use SUVs and trucks with 5,000 pound towing and 500 pound tongue weight capacity. The Adjustable Receiver Hitch can be installed to raise the receiver hitch 3" to 9" for vehicles with low hitches or to lower the receiver hitch 3" to 9" for lifted vehicles or other vehicles with high hitches. Also extends receiver hitch 3" to 9" towards rear of vehicle. Like the U-4043 can be inverted to lower the hitch towing point as well.



U-4100S Scorpion Heavy Duty Spare Tire Mount- Swing Away

The U-4100S adds the convenience of the Hornet Outdoors Scorpion Swing-Away Hitch Spare Tire Mount for deep inset tires. Best Suited for Trucks and Vehicles with Heavy Wheel/tire combinations that weigh #70 lb range and above.

