



WINNEBAGO-BOONE FARM BUREAU
CELEBRATING
100 YEARS





ABOUT THE AUTHOR(S)

Like most things in Farm Bureau, this book was created by a committee.

Past presidents and others were asked to contribute their views on the important happenings of the past 100 years in Boone and Winnebago County. For this reason, different writing styles may be observed at different stages of this book. Each of the contributors are thanked for their contributions whether written or verbal.

A Special Thank you goes out to the Centennial Planning Committee for all your hard work over the past year. Brent Pollard, Chair, Roger Christin, Jeremy Franseen, Gary Greenlee, John Mitchell, Bob Phelps, Del Tedrick, Gary and Ann Turner, Richard Beuth and Farm Bureau Office Staff.





MISSION:

Be the voice, resource, and advocate for farm families and agriculture, while promoting stewardship for today and future generations.





PRESIDENTS MESSAGE

Welcome to the Centennial Booklet of the Winnebago-Boone Farm Bureau. A lot of research and effort has gone into providing you with this special collector's booklet. We

also have made a video where we have interviewed many of the past presidents, Women's Committee chairman, Young Farmer/Young Leaders chairmen and past managers to obtain a complete history of the Winnebago and Boone County Farm Bureaus before they merged in 2012. It is a difficult job to find the 100-year history of one county, but it is an enormous job to do that for two counties. A special thanks to those on the Centennial Committee, our Farm Bureau staff and especially our manager, Ann Marie Cain. With all the pictures, newspaper articles and past board minutes, the hardest decisions were what not to put in the booklet. We hope you find it to

be a good source of history and a reflection of all that our members have accomplished over the past 100 years.

It is interesting that before the first Illinois Farm Bureau, DeKalb County in 1912, there was the Illinois Farmers Institute 1895-1920 and a "Farmers Club" with business, newspaper and education leaders. Other counties had a Soil and Crop Improvement Association. The farmers realized they needed one farm organization and the Illinois Agricultural Association (IAA) was formed in 1916. Each county hired a "Farm Adviser" or "County Agent" who taught the local farmers the "Illinois System of Soil Fertility" with the use of lime, legumes and phosphate. George Tullock from Rockford, former President of the Farmers Institute, was one of the state organizers. He later was the Winnebago County Farm Bureau President and on the IAA Board.

Later farmers needed more affordable insurance, so the Mutual Auto Insurance Company was formed in 1926. As members got more tractors and autos, they needed oil and gas. Winnebago Service Company started in 1930 and



Boone Oil and Gas Company in 1933. After the Extension Service started, Farm Bureau went to a Farm Bureau manager to carry out the policy of the Board of Directors and maintain the office bookkeeping and membership.

The managers helped form the important Women's Committee. Winnebago County Farm Bureau's Women's Committee began in 1955 and Boone County Farm Bureau's Women's Committee began in 1956. Winnebago County Farm Bureau's Young People Committee began in 1965 and Boone County Farm Bureau's Young People Committee began 1968. Winnebago and Boone County Farm Bureaus jointly started the Prime Timers in 1993. Both counties had a co-op where they sold animal health products in the 1960's and Boone County had co-op lockers from 1939-1954.

Many of our current activities focus on informing the 98% of the population that aren't farmers about modern farming. We do this at the two county fairs, the Farm Breakfast, activities at the Discovery Center and Ag in the Classroom where we reach over 34,000 students a year. We also work with our county leaders and state and

national legislators to promote Farm Bureau Policies. Our efforts have shifted to dealing with interest groups and government regulations that seek to limit, rather than promote agriculture.

We have come from "horsepower" to auto steer tractors that pull planters that set population from a satellite 100 miles above us. Our current farmers are the beneficiaries of all the work of past leaders and members of Farm Bureau. The future and health of our industry depends on the continued work and leadership that Farm Bureau members provide.

Mr. Richard Beuth, *President*
Winnebago-Boone Farm Bureau

| EARLY BOARD OF DIRECTORS

Boone County Farm Bureau

1920 BOARD OF DIRECTORS

K.W. Cleland

Robert Cummings

August Engleke

Joe Goodall

D.L. Hildebrand

Elmer Hyde

C.E. Johnson

William Pinegar



left to right: C.E. Johnson, Elmer Hyde, August Engleke, Joe Goodal, Robert Cummings, D.L. Hildebrand, K.W. Cleland, William Pinegar



Back Row: George Tullock, Leigh Frisbie, James Shirley, David Picken
Center Row: C.E. Austin, George Atwood
Front Row: E.M. Breckenridge, E.F. Derwent, E.C. Burch

Winnebago County Farm Bureau

1921 BOARD OF DIRECTORS

E. F. Derwent, President

R. S. Bradt, Vice President

E. M. Breckenridge, Secretary-Treasurer

EXECUTIVE COMMITTEE:

E. C. Burch

C. E. Austin

George F Tullock

George Atwood

W. H. Mackey

S. E. Hoisington



Winnebago-Boone Farm Bureau

2019-2020 BOARD OF DIRECTORS

Richard Beuth, President

Cody Book

John Cleland

David Daly

Jeremy Franseen

Curt Greenlee

Gary Greenlee

Larry Larson

John Mitchell, Vice President

Sidney Moate, Treasurer

Julie Newhouse, Secretary

Trevor Olson

Brent Pollard

Phillip Raines

John Reid

Brian Sisson

Clay Sohner

Back Row L to R: Gary Greenlee, Trevor Olson, Clay Sohner, John Cleland, Sid Moate, Larry Larson & Jeremy Franseen

Front Row L to R: Cody Book, Brent Pollard, Julie Newhouse, Richard Beuth, John Mitchell & Phillip Raines. (Not shown: David Daly, Curt Greenlee, John Reid and Brian Sisson.)



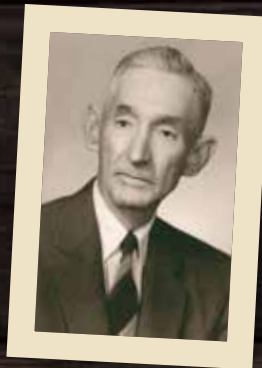
| WINNEBAGO PAST PRESIDENTS



E. F. DERWENT
1921-1924



GEORGE F. TULLOCK
1924-1935



CLARENCE H. WISHOP
1935-1938



EVERETT C. PHELPS
1938-1947



T.E. DERWENT
1947-1950



GEORGE H. JOHNS
1950-1958



CLARE CLOVER
1958-1961



MARTIN DOTY
1961-1963



ELLIS K. GREENE
1963-1969



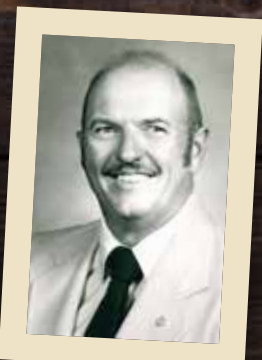
FLOYD DICKINSON
1969-1974



ROBERT WINTERS
1974-1977



STEPHEN SHADE
1977-1981



RALPH FRANTZ
1981-1983



DENNIS WILKE
1983-1986



ROBERT PHELPS
1986-1993



LARRY LARSON
1993-2005



EARL WILLIAMS JR.
2005-2015



RICHARD BEUTH
2015-2020



ROBERT CUMMINGS
1920-1923



D. ELVIN BROWN
1939-1941



JAMES CANNELL
1955-1960



DONALD GESELL
1960-1963



RUSSELL MCEACHRAN
1963-1965



ROBERT NEWPORT
1965-1969



GARY TURNER
1969-1973



ROBERT NEWPORT
1973-1976



DONALD ELLINGSON
1976-1979



JAMES FLANDERS
1979-1980



RUSSELL ANDERSON
1980-1984



RON KARLSON
1984-1985



WILLIAM CLELAND
1985-1987



ED MATHISON
1987-1996



LARRY ANDERSON
1996-2012

Not Pictured: Phil Sandford 1923-1926, Julian Larson 1926-1928, James Gough 1928-1931, Harry C. Meyers 1931-1932, Elmer Welin 1932-1934, John Hopperstad 1934-1937, Vernon Cutler 1937-1939, Mark Grenlund 1941-1946, W.A. Krupke 1946-1949, Roy Latt 1949-1952, Bob Mickey 1952-1955

Boone County Farm Bureau and Illinois Agricultural Association

Belvidere, Illinois, February 18, 1920.

DEAR SIR:

Boone County farmers are to organize a farm bureau.

Meetings have been held at Belvidere and Caledonia. Representative farmers from every township in the county voted at these meetings to go ahead and complete the organization. A county wide membership campaign will be put on the first week in March.

Every farmer, whether owner or tenant, will be given an opportunity to join with other farmers in this county, state and national movement of organized agriculture. Every member of the Boone County Farm Bureau will also become a member of the Illinois Agricultural Association.

DeKalb County has had a farm bureau for eight years and they now have over 2,000 members. McHenry County has had an organization seven years and now has 1,600 members.

Seventy nine counties in the State and nearly 3,000 in the United States now have farm bureaus. There are over 60,000 farmer members in Illinois alone and new members are coming in at the rate of 2,000 per week.

Boone County deserves and needs a farm bureau as much as any county in the state.

Farming is a business the success of which is vital to the prosperity of the nation. Every other business industry, trade and profession is organized. Farming is the biggest and most important business of all. Farmers must look after their own interests.

The average Boone County farmer has a business that represents an investment of from \$15,000 to \$40,000.

Can any thinking farmer say that farmers should not have an organization because they have no interests that need looking after?

Boone County should have one of the strongest Farm Bureaus in the State. One of your neighbors will call on you during the membership campaign and give you an opportunity to join hands with other farmers in this county, state and nation in this great movement.

Very truly yours,

Organization Committee.

WRATE H. HILL

CHAIRMAN.

KENNETH W. CLELAND

SECRETARY.

A. F. ENGELKE
ROBT. CUMMINGS
JAS. GOUGH
D. F. HILDEBRAND
J. P. GOODALL
C. E. JOHNSON
JOHN MULLIGAN
W. W. PINEGAR



1920

On January 23, a preliminary meeting was held at the Y.M.C.A building, where a temporary Boone County Farm Bureau was organized. The organization was to be made permanent after a sufficient number of subscribers were secured. Wrate Hill was elected chairman and K.W. Cleland was elected secretary. A.F. Engelke, Manchester Township; J.P. Goodall, Leory; Robert Cummings, Caledonia; C.E. Johnson, Boone; James Gough, Belvidere; P.H. Sanford, Bonus; D.L. Hildebrand, Flora; and W.W. Pineger, Spring, were elected to act as an organization committee. Professor J.D. Bilsborrow, University of Illinois Extension explained the purpose of the bureau and the necessary steps needed to become permanent.

Professor J.D. Bilsborrow, University of Illinois Extension, and Mr. Holmes, Peoria County, were present at the second meeting in Caledonia on February 12th and discussed the works of Farm Bureau and IAA.

Boone County Farm Bureau was officially organized on March 16 "to encourage the practicing of the most profitable and permanent systems of agriculture possible in this country, to promote the development of more efficient systems of marketing agricultural products and to further the educational, financial, and social welfare of its inhabitants in every legitimate and practical matter."

The first officers were: Robert Cummings, President; Roy Moss, Vice President; K.W. Cleland, Secretary; and C.E. Johnson, Treasurer. Other members of the first board of directors were: W.W. Pineger, J.P. Goodall, A.F. Engelke, D.L. Hildebrand and Elmer Hyde.



The first office was established in the original grain elevator office located at 104 W Main Street, Poplar Grove (for 15 months). Mr. J.C. Kline was elected to act as Farm adviser as of June 13.

The organization netted 788 members from a one-day membership drive held during the first week of March. Membership was for three years and dues were \$15 (\$10 for the local organization and \$5 for the state organization.)

One of the first steps taken by the new organizations was to sell coal, salt, and apples among the members. The Farm Bureau tested soil for limestone and phosphorus, and bought limestone and phosphate by carload lots. During the first year, the Farm Bureau purchased and handled 1,256 tons of limestone, 235 tons of rock phosphate, 633 bushels of apples, and 600 bushels of potatoes. They also pooled and shipped 18,000 lb. of wool to the National Wool Warehouse in Chicago.

A purebred breeders' association formed and had thirty or forty members. The results of the Farm Bureau's livestock survey showed a total of 300 grade and 200 purebred dairy bulls in the county.

A.B. Hammond started the 4-H club work in 1920. The pig club consisted of 74 boys, 56 of whom showed their animals at the county fair. The pigs were sold at an auction at an average price of \$47.25.

1921

The Farm Bureau office moved to the second floor of 316 S State Street in Belvidere over Marshall Bros.'. The move was announced on June 20th. Membership increased to 945.

A purebred sire campaign was conducted and closed with a county wide sale at which 40 bulls were put up and 20 sold. Sixteen poultry culling demonstrations were given.

A cow testing association was formed and 94 farmers joined. Samples were taken by the farmer and sent to the office for testing by Montelle Boyd.

A "Use More Milk" campaign was held for the 5th - 8th grades of the rural schools. Prizes of \$5 for first place essays on "The Food Value of Milk" were offered by the Farm Bureau in each township. Over 400 students participated.

1922

An educational program was held in order to eradicate tuberculosis among dairy cattle. The County Board of Supervisors appropriated \$2,000 to be used in the eradication of this disease among cattle and a county veterinarian was employed on July 1, 1922. As a result of this program eighteen carloads of reacting cattle were shipped from the county and by the end of 1922, forty carloads had been shipped for slaughter. Out of the 200 herds that had been tested, it was estimated that 35% of all cattle in the county were tubercular. In 1926, Chicago shut out all milk except that from tuberculin tested cattle. There had been a great reaction against the Farm Bureau for their promotion of the testing program.

The Farm Bureau formed a Farm Loan Association; 27 cars of limestone were used in the county; 300 bushels of soybeans were ordered and distributed to the farmers; a seed exchange day was held, and cooperative shipping associations started.

The Farm Bureau put up an award of \$100.00 for the arrest and conviction of any chicken thief.

1923

The Boone County Cow Testing Association membership reached 100 members. Farmers brought milk samples to the Farm Bureau office where they were tested by Floyd Rote. This service was later developed in to as many as three Dairy Herd Improvement Associations (DHIA), some of the earlier testers being Montelle Boyd, Milo Wolfe, Joe Hughes, John Timm, Bill Timm, Chester Watts, and Dan Cahalan. A few of the later testers were: John Yurs, Walter Krumrey, John Eichelberger, Lisle Wire, Herb Kutz, and Louise and Martha Samelson.

I BOONE HISTORY

1924

Due to cattle and chickens being stolen and transported across the state line, the Farm Bureau formed a protective association where five deputies were appointed in each of the nine townships.

The Cow Testing Association tested milk from 900 cows and was reorganized because there were too many members in the association. Demonstrations were conducted on a number of farms where alkali land was present. Farm Bureau distributed 20 tons of potash for use on such lands which resulted in the first corn crop on land where nothing had grown before.

1925

Phil H. Sanford was elected President.

The County Superintendent of Schools allowed the boys and girls to take off two days of school to select seed corn for Seed Corn Day. A corn show in Belvidere was held. About 75 sets of ten ear samples were placed on exhibition by the boys and girls.

Farm Bureau gave 21 boys purebred Gold Glow seed corn for the Acre Corn Contest. The first two winners were sent to the National Livestock Show Exhibition.

The Farm Bureau organized an effort to standardize the poultry houses in the county. Several new poultry houses were built with the plans furnished by the Farm Bureau.

The Boone County Fair was not considered an agricultural fair, but was classed as nothing more than a horse racing fair. The Farm Bureau put forth a special effort to get the fair back on its feet. Most of the work of the fair secretary was done through the Farm Bureau office.

1926

The Farm Bureau membership had dropped to an all-time low of 271 and morale was low. It took three months to re-organize the Farm Bureau. The plan of organization was different than previous years and instructional meetings were held throughout the county. Julian Larson was elected President.

Hog Cholera had done more damage than in years past and Farm Bureau held vaccination demonstrations for local farmers. Farm Bureau sold serum and supplies at cost.

Mr. Oderkirk, University of Illinois, helped the Farm Bureau conduct two rat control demonstrations with the use of cyanogas in January.

A labor service was begun for members. Farmers needing labor left information with the Farm Bureau office and were matched up with laborers needing jobs.

1927

Farm Bureau first represented the Illinois Agricultural Mutual Insurance Company as agent for that company's automobile and employer's liability insurance. This marked the beginning of a major project in the insurance department.

J.C. Kline resigned as Farm Advisor. Edward C. Foley was appointed as Farm Advisor on August 1st to replace Kline.

1928

James Gough was elected President.

A hitch demonstration was held showing the proper methods of driving teams of two to eight horses.

The Farm Advisor visited many local organizations to talk about Farm Bureau and its value. In return, the groups assisted in the promotion of Farm Bureau projects.

An orchard demonstration was held in the county to show the proper methods of spraying and pruning trees.

The Farm Bureau helped secure and put a fire truck into service for the rural residents in the four southern townships.

1929

Membership had increased to 385. Major projects included rural fire protection, publicity, legumes, seed corn, and club work.

The County Superintendent of Schools cooperated with the Farm Bureau to sponsor the first township field days. Schools in each township competed against each other. Township winners competed in the county meet. This well-known project continued for about 10 years. Farm Bureau conducted the county championship meet each year, beginning in 1930.

Several demonstration plots were placed in the county to show the differences in using rock phosphate, stable manure, and no treatment.



A terracing demonstration was held on the farm of Senator Deneen at Belvidere where severe gullying had occurred. Professor Hoover was present to discuss the making of a terrace.

Country Life Insurance Company policies were first sold in the county in the spring of 1929. K.W. Cleland became General Agent for the Insurance Department in the fall of 1929 and continued in that capacity until 1935 when he resigned and Paul Churchill was appointed to direct the department.

The DeKalb Agricultural Association formed an oil company which included several counties in its territory.

1930

AFBF President Sam Thompson spoke at the Annual Meeting on March 12.

Harold Luhman organized the Farm Bureau Band at the Blaine Church in the spring. Over 75 members took part in the band, which grew into a most enjoyable project.

4-H club work was set up on a local leader basis. Home economics as well as agricultural clubs were organized. The Farm Advisor supervised both types of clubs until 1941 when the Home Bureau took over the Home Economics club work.

Corn diseases were studied in particular and the dry season was especially favorable for seed production. Yields of one to one and one half bushels of alfalfa per acre were received.

Dairy Herd Improvement work increased, twenty-seven herds were tested this year, the average butterfat was 300.4 pounds and the average return above cost was \$114.18 per cow.

1931

Harry C Meyers was elected President.

A contest spirit was developed in the testing work, with trophies awarded to

owners of high ranking herds and high individual cows. The Farm Bureau awarded SA Ellsworth the Wright Cup for having the highest fat production average. He was also awarded the Witbeck Cup for owning four daughters of one bull producing higher than any other four.

Approximately, \$1000.00 was spent during the year in promoting 4-H Club work, of which \$400.00 was returned to members in premiums for high grade work.

Membership increased to a total of 512.

1932

Elmer Welin was elected President.

The first Farm Bureau baseball team was organized with Godfrey Karlson as manager.

The erosion program began in the county. A terracing demonstration was conducted at the Charles Deneen farm on August 26. The purpose of the demonstrations were to show the manner in which the work should be done for best results.

The Farm Bureau Band received national praise when it performed at the Illinois Agricultural Association Convention at the Faust Hotel in Rockford. They also participated in the Chicagoland Music Festival at Soldier Field.

To reduce expenditures and increase local government efficiency, the Farm Bureau cooperated with the Chamber of Commerce and other local organizations to investigate the local distribution of tax money. The committee found that the county could cut \$33,787.54 from the expenditures in comparison to the expenditures from 1931.

The Farm Bureau held a series of meetings to discuss the county's problems and future outlook.

Elmer Welin, Farm Bureau President, EC Foley, Farm Advisor and Fred Machesney of Rockford flew from the Rockford Airport to Galva, IL for the National Corn Husking Bee.

Miss Beth Herbert, daughter of Mr. and Mrs. John Herbert, of Bonus Township, won the Boone County Farm Bureau's Second Annual Jubilee and Beauty Contest in December. She represented Boone County at the Country Life Queen competition at the Chicago World's Fair during the summer of 1933.

The first Annual Rural Dramatic Contest was held December 16 and 17. Four plays by rural groups in Boone County were

presented each evening.

Farm Bureau Band Director Harold Luhman's car was stolen in December. In the car were a flute, violin, cornet and bassoon valued at \$500.

1933

A campaign for bot control in horses was carried out by the Farm Bureau. There were 116 farmers that requested treatment for 600 horses during the program.

4-H members and members of the Farm Bureau Band attended the Century of Progress exposition in Chicago. The band performed during the afternoon and a Boone County 4-H member was chosen as a state champion.

Farm Bureau and the University of Illinois held a Farm Accounting School. L.F. Shoot of the U of I checked the books of 42 farmers during the program.

Many resolutions were passed by the membership at the 1933 IAA Annual Meeting. One resolution approved stated "That taxes are too high, that they should be reduced, first by cutting costs, and if necessary by cutting services." Another declared that the individual system of marketing is primitive and out of date and that cooperative marketing should be adopted as a medium to acquire bargaining power, reducing costs, and bringing about a higher and even price level. "

The Farm Bureau purchased Fred Brach's oil service station at 125 North State Street. Possession was taken by the Farm Bureau on April 1. The new oil company began selling the Hi-Ball gasoline at their Alladin Filling Station shortly after possession. The fuel was mixed with 10% anhydrous alcohol made from grain.

After eight years at the 316 South State Street location, the Boone County Farm Bureau moved their office in April to the second floor at 121-127 North State Street, opposite the Apollo Theatre. A very good bargain was made for the purchase of a two-story building. Office space was taken in this building, cutting out rent expense, and the rest of the building was leased out to other tenants at rates which brought in sufficient income to meet the required loan payments. The new office adjoined the recently acquired filling station.

The Pure Milk Association, IOU Club, Farm Bureau, and Granges sponsored

the Farmers-Merchants Picnic at the Fairgrounds on July 14. The plans included hardball and softball tournaments, ice cream social, band concert, milking contest, horseshoe pitching and a ladies ball game. But due to bad weather on the 14th, the afternoon activities were postponed to the 15th.

The Farm Bureau Band was given the honors of playing before and after the Secretary of Agriculture Henry Wallace's speech at the World's Fair Farmers' Day event.

1934

John Hopperstead was elected as President.

The continued popularity of Dairy Herd Improvement Association's (DHIA) work was emphasized when it was found that a higher percentage of Boone county dairy cows were on test than in any other county in Illinois.

4-H members and the Farm Bureau Band again visited the World's Fair in Chicago where the Band filled another concert engagement.

Chinch bugs proved a serious menace during that summer, but barriers were constructed which impeded their progress considerably and made the damage less serious than it might otherwise have been.

The extreme dry weather in northern Illinois made drought relief necessary. This was handled as efficiently as possible in order that the county's appropriations reached as many as possible.

1935

DHIA work brought state recognition to Boone County when three of the ten highest producing cows in the state were prominent in local associations. Milk marketing was an important problem under consideration.

4-H Club work, music, and drama, county chorus and the Farm Bureau Band kept a good deal of public attention focused on Farm Bureau and extension activities. A large number of rural folks throughout the county were reached through these activities.

1936

Irrigation was introduced to Boone County when a commercial corn field became the first in the central west to be equipped for irrigation. Marshall Bros. Company, owners

I BOONE HISTORY

of the field, also irrigated thirty acres of potatoes that year.

Concern was expressed and some improvements were made in the noxious weed situation, with particular activity in reference to Canadian Thistles.

In cooperation with the Boone County Skilled Drivers' club and the Illinois Agricultural Association, the Farm Bureau operated a Safety Lane on August 5 and 6 on State Street to promote safety. Brakes, lights, horn, windshield wipers, and other factors of safety were tested. A windshield sticker was given to the cars that passed the test and several area garages gave discounts to people with safety stickers.

A position to oppose the conversion of Chicago and the rest of the state of Illinois to Eastern Standard Time zone was taken by the Farm Bureau.

Information meetings on the soil conservation act were put on in the townships by the Farm Bureau. Officers were elected for each township committee.

The first corn husking contest was held in Boone County and was sponsored by Farm Bureau, Belvidere Daily Republican and Pomona Grange. On October 28th, 5,000 people attended the contest at the farm of Sidney and Eugene Frye, Capron. Prizes were donated by the BDR. The first award was \$25 and the second was \$15. The object of the contest was to determine the contestant that could husk into the wagon the largest amount of ear corn. Husking took place for 80 minutes. The contestants had to husk all the ears produced on the land covered. Elmer Dassow of Garden Prairie husked 31.36 bushels to win the county event.

1937

Vernon Cutler was elected President.

A joint project of the Extension, Soil Erosion Services and the Farm Bureau was an erosion control demonstration.

Dairy herd improvement work continued to be popular. Rural electrification work received considerable attention as did the "Boone County Thistle Plan." This plan was adopted by other counties and was included in the official list of projects for the I.A.A.

1938

The Farm Bureau Band disbanded due to

interests of band members in other Farm Bureau activities.

1939

D. Elvin Brown as elected President. E.C. Foley resigned as Farm Advisor.

Joe Galloway was selected as manager of the cooperative locker plant that opened during 1939. The plant had 235 lockers.

1940

The Northern Illinois Breeding Association was formed to help improve dairy herds.

D.M. Chalcraft replaced E.C. Foley as Farm Advisor.

1941

Mark Grenlund was elected as President.

The Farm Bureau officially took action in June to form the Boone County Soil Conservation District. By the end of the year, a technician was assigned to work in the county by the Government and it was determined that there were 1500 farms in the county.

Farmers were asked to up corn acreage to help the war effort.

1943

A Farm Account School was held at the Farm Bureau office on January 21. The program was sponsored to aid farmers in solving problems connected with higher income taxes and other wartime difficulties.

School children competed for prizes during the Farm Bureau membership drive in January. Schools with 100% membership or reached 100% membership by February 1 were given a ping pong table and complete equipment, or any other play equipment the school wanted up to the value of \$15.

American Farm Bureau Federation President Ed O'Neal addressed Boone County farmers and residents at a picnic at the Poplar Grove 4th of July Celebration. He spoke on the administration's inability to handle the farm problem.

Farm Bureau's baseball team, the Farm Bureau Nine, beat Rockford Polish National Alliance club in a 17 inning game. Art Hyland and Paul Foglesong hit singles in the last inning and Dan Taylor hit a perfect bunt bringing in the winning run. The

ending score was 3 to 4.

Twelve labor placement and recruiting centers were established in Boone County as a means of supplying help to farmers to produce and harvest food supplies. As many as 250 crop corps workers were needed.

1944

As a service to Boone County farmers to expedite work, Boone County Farm Bureau decided to allow a blanket application for Prisoner-of-War labor for work on Boone County farms at fifty cents per hour.

The Farm Bureau Board sent a letter to the Kishwaukee Service Company advising them to terminate their services because a Boone County Service Company was in the development. This was in the best interests of the Boone County Farm Bureau members.

The University of Illinois and Farm Bureau held a Farm Tour on August 31. The group toured the Mark Grenlund and George McEachran farms to study the fine care of dairy and beef herds, swine and poultry and the good use of tile drainage in the increase of crop yields.

A postwar farm problem meeting was conducted by Farm Advisor DM Chalcraft during December for county farmers and their wives. Presentations were given on the prospects for 1945 and their effect on farm prices, and farm planning with emphasis on labor efficacy.

1945

Farm Bureau celebrated their 25th Anniversary on March 6th. The meal was served at the Belvidere Community Center as well as several churches. After dinner, they rejoined at the Community Center where Earl Smith, President of IAA and Vice President of AFBF was the featured speaker.

During the June Board meeting, the directors decided to send Christmas presents to boys and girls of Farm Bureau families in the service.

WROK and the Farm Bureau sponsored a radio broadcast program for the benefit of families of service men in hospitals in America.

A soil testing laboratory was installed in the Farm Bureau office. It offered a complete testing service for limestone, phosphate, and potash deficiencies.

1946

W.A. Krupke was elected President.

A resolution was sent by the Farm Bureau Board to the Chamber of Commerce opposing daylight savings time in Belvidere and asked for their help in preventing it from coming back to Belvidere.

The Farm Bureau Board named George Price as Farm Bureau baseball team manager and agreed to pay \$150 toward expenses of the team.

A letter was sent from the Board to the Illinois Commercial Telephone Company addressing the poor telephone service to the rural residents of Boone County.

1947

For the first time, the Boone County Farm Bureau and Boone County Service Company held their Annual Meeting together. It was held at the Belvidere Community Center on March 18. Mr. C.H. Backer, Illinois Farm Supply Company manager was the speaker during the event.

A series of conservation meetings were held throughout the county in January and February to encourage more interest in conservation work.

At the March Board meeting, the directors moved to send a resolution to the Country Mutual Fire Company protesting the plan to write the hail insurance policies in the county because the company did not pay adequately for the work.

During the 1947 Annual Meeting, Farm Advisor D.M. Chalcraft presented awards to the three winners of the 1946 Contour Corn Yield contest. The winners were D. Elvin Brown, Ivan Shawvan, and James Moorhead.

1948

Winn-Boone Livestock Marketing Association was formed with William Matheseon, George Phillips, and Oscar Grenlund representing Boone County.

A cyclone fence was erected in the Farm Bureau parking lot to separate the Farm Bureau property and the lot adjoining it.

A septic tank and farm plumbing demonstration was held at Roy Latt's farm in October. A precast concrete septic tank was installed and a farm plumbing system was discussed and demonstrated.

After winning the local Contour Plowing contest, Belvidere township farmer Hillis Swanson won the state competition held in Bureau County.



Flies...Flies...Flies...

were everywhere. The Farm Bureau and other local organizations participated in a state-wide campaign to eliminate the fly problems in the county. The Board has served as the committee chairmen of the fly control program in their respective townships.

Harold Biester gave a report at the December Board meeting that there were 2000 co-op lockers in the county- 1000 in Belvidere, 400 in Capron, 400 in Sharon and 200 in Caledonia.

1949

Roy L. Latt was elected President.

A farm woodlot management meeting and timber sawing demonstration was held January 11 at the Alva McMaster farm.

After listening to Belvidere Township Road commissioner, Carl Pape, the Board voted to support the referendum in Belvidere Township for a \$65,000 road and bridge bond.

According to a letter from the IAA General Council, the Board could not invest funds in stock without getting approval from the membership. The delegation at the Annual Meeting gave the Board the authority to purchase stock in the Grain Terminals

Company and the Service Company.

A letter was sent from the Board to the Illinois Sanitary Board protesting against the pollution in Beaver Creek and other streams in Boone County.

Mr. Page received permission from the Board to sell popcorn after work in the Farm Bureau parking lot. In return, Mr. Page kept the parking lot clean from trash.

A letter was sent to Winnebago County officials urging them to not let the chicken thieves operating in Winnebago County off easy.

1950

The Farm Bureau sent Clifford Peacock and Herman Mick to the Co-op Training Courses held at the University of Illinois.

The Belvidere Rotary Club invited the Farm Bureau directors to a meeting where Mr. O.D. Brissenden discussed the relationship problems between business and agriculture or agencies.

The Board unanimously voted to amend the Boone County Farm Bureau Constitution at the February Board meeting to change the Annual Meeting date from March to June. The Annual Meeting was held as a picnic at the fairgrounds on June 24.

1951

A Farm and Home Day was organized and held at the YMCA. The farm topics included: Poultry problems, Brucellosis and other dairy diseases, dairy feeding and analysis, and beef and swine feeding and management.

Instead of a picnic in 1950 for the Annual Meeting, an evening meeting was held in June. A dinner was served costing members 50 cents each.

1952

Robert C. Mickey was elected President.

A farmer-Businessmen's Dinner was held at the Community Center on April 2. Farmers obtained tickets through the Farm Bureau or PMA office and asked their merchant friends to attend. Jerry Sotola from Armour and Co., Chicago, was the evening's speaker. He spoke on his travels to six European Countries.

Keith Hinchcliff from the University of

I BOONE HISTORY

Illinois spoke at four meetings in the county on farmstead planning and home remodeling.

The Farm Bureau donated \$200 to the Sears Roebuck Pig Project for the 4-H'ers.

1953

Ralph V. Johnson was the Farm Advisory and Raymond Barkau was the Organization Director.

The soil sample pick-up service of the Farm Bureau Soil Testing Laboratory began on September 1.

For the first time in many years, Boone County farmers were offered the opportunity to voice their opinions during nine policy discussion meetings. Topics that were discussed included: price supports, ACP payments, and world trade.

Farm Bureau Policy Development Meeting held in Flora Township in the fall of 1953

During the July Board meeting, the directors voted that no future Notary Seals obtained by employees shall become property of Boone County Farm Bureau when the employee leaves.



1954

Farm Bureau Short Courses were held in the county. The main objective of the courses were to better acquaint members with the Farm Bureau. The Extension/ Farm Bureau relationship, Farm Bureau history and legislative process were areas that were covered during the courses.

Members voted to sell the Farm Bureau building on State Street during the 1954 Annual Meeting. A building committee was established consisting of Don Gesell, Robert Mickey, Wesley Greenlee, Harvey Newport, and Clifton McCoy to organize the

construction of a new building.

On October 31, the Farm Bureau sold the Belvidere Locker Plant.

1955

Ray Barkau was promoted to full-time Organization Director for the Boone County Farm Bureau on January 1. His additional duties included promoting service programs, public relations, legislative, correlating Farm Bureau programs with Extension and affiliated companies, editor of BCFB News and supervising the office and Board of Directors.

Kenneth Harris began his career in Boone County as County Organization Director on March 1. He replaced Ray Barkau, who resigned to take a similar position in Mercer County.

James Cannell was elected President.

Membership dues were raised by the Board of Directors to help cover costs of the new building. The dues went up to \$21 which began August 1, 1955.



In July, the Board approved the purchase of Countryman's property next to the Service Company on West Locust Street. The Farm Bureau Board authorized the President and Secretary to sign a building contract with Mr. Ralph Lamphere for the construction of a new Farm Bureau building. The building contract was signed for the amount of \$44,019.26.

Local contractor, Ralph Lamphere and Don Gesell, Chairman of the Building Committee as they go over detailed plans for the Farm Bureau Building. "The new building is a fifty-four foot by fifty-four foot (54' x 54') construction. It will house the offices of Organizational Director, Insurance Department, Extension Department, Home Bureau and Boone Service Co. The

basement is expected to accommodate 175 people. In additional

to the meeting room in the basement, there will be a vault room, kitchen, and furnace and soil lab combination." from the BCFB News, September 1955 edition.

1956

The Farm Bureau, insurance companies and the Service Company moved into the New Farm Bureau building located at 702 West Locust during January.

Albert J. Cross, Director of the Department of Local Government of the IAA, presented information on the duties and responsibilities of a Supervisor of Assessments at a meeting sponsored by the Farm Bureau during March.

James Cannell, President, and the Farm Bureau Board hosted an Open House that was held at the new Farm Bureau building on July 8. More than 400 people toured the new building during the Open House.

A Kountry Kuzzins Club was organized

by several Farm Bureau couples. The group was developed primarily for recreation and entertaining outings.

The Board appointed the first Women's Committee. Mrs. Wilbur Reid was appointed as Committee Chairman and Mrs. Harvey Newport, Norma Gesell, Louise Cleland, and Mrs. Darrell Crawford were appointed as the committee.

Women's Committee won second place award in citizenship on the state level.

Otto Steffey, President of the IAA, presenting Mrs. Wilbur Reid with the Citizenship Program second place plaque. Mrs. Reid was the chairman of the Farm Bureau's Women's committee that did such a splendid job on the Revenue Amendment and the Get-Out-The-Vote. L to R: John Monroe, Livingston, Mrs. Wilbur Reid, Boone and Otto Steffey, President of the Illinois Agricultural Association.



1957



An agricultural marketing informational meeting was held during January at the Farm Bureau building. E.V. Stade, Assistant Secretary of Marketing, was the principal speaker. He discussed how Boone County farmers could contribute funds to the promotion of commodities.

The Farm-Her-Four entertained during the 37th Annual Meeting of the Boone County Farm Bureau. The Women's Barbershop Quartet singers were Lorraine Carmichael, Joyce Gustafson, Marilyn Meyers, and Norma Gesell.

In honor of National Dairy Month, the Marketing Committee held a businessman's tour of milk houses and tours of local ice cream dairy processing plants. In addition, they appropriated \$50 to a waitress that asked customers if they cared for a glass of milk.

1958

It was determined by the Board to charge the local farm organizations \$10 for the use of the Farm Bureau building. Non-farm organizations had to be approved by the Board for the use of the building and charged \$12.

A mimeograph machine was purchased. Farm Bureau allotted \$500 to hook up the building to city sewer and donated \$50 to each of the two hospital building projects.

The Farm Bureau Soil lab tested a total of 3,393 tests for lime that year.

1959

Farm Bureau volunteers solicited money during a meat promotion program. The solicitation raised \$821.77 for the

promotion of agriculture products. A poster contest for school children was held by the Women's Committee. They awarded attractive leather plaques and ribbons to the children who made the neatest and most appropriate posters. The Women's Committee participated in a statewide safety campaign. The purpose of the campaign was to clear corners of obstruction at rural intersections and to encourage farmers to properly light and mark vehicles and implements on highways.

The Farm Bureau began selling animal health products. Over \$3150 worth of serum and antibiotics were sold during the first year and the Board declared a 20 percent dividend for those who participated in the service.

1960

Donald Gesell was elected President. Bud Gallano outscored the other participants with a score of 537 in the Boone County Farm Bureau Bowling tournament on January 26. Phyllis Gallano won first prize in the women's group with a score of 453.

The Farm Bureau hosted members of the Belvidere and North Boone High Schools' FFA Chapters at an Acquaintance Program at the Farm Bureau building. The students were given a tour of the Farm Bureau facilities along with an orientation period. A banquet was held at the Beacon Restaurant afterwards.



There were 170 former band members and their families who attended the Farm Bureau Band Reunion that was held on June 19th in honor of Harold and Beth

Luhman at the Farm Bureau building.

1961

Farm Bureau sponsored an informational meeting on the Cropland Adjustment Program.

President Donald Gesell and Secretary of Organization Ken Harris were presented an honorary membership of the Belvidere FFA Chapter on behalf of the Farm Bureau during the Annual FFA Parents and Son Banquet. The award was given on the basis of Farm Bureau's interest in FFA.

The Women's Committee sponsored a Taste Test Demonstration at Sanford's Super Market, Piggly Wiggly, Kroger, and Piel's grocery stores during April. Dean's and Borden's distributors donated the cream dip that was used during the promotion.

1962

To defray much time and effort by solicitors, the Farm Bureau enclosed a marketing promotion note with their dues notices asking members to contribute. The money collected during this drive was used to promote agricultural products.

The Women's Committee held a spring tea meeting for members and potential members of the committee in May. Mrs. Florence Thomas, IAA Director of Family Activities, discussed the state committee activities, Mrs. Roy Robinson gave an informational program on communism, Mrs. Lloyd Turner discussed safety, and Mrs. Earl Cook discussed citizenship.

The county participated in the statewide "Get Out the Farm Bureau Vote" campaign. It was designed to encourage eligible Farm Bureau members to vote for the candidate of their choice.

1963

Russell McEachran was elected President. The Farm Bureau introduced the Group Life Insurance Program for Farm Bureau



I BOONE HISTORY

members. Members and their families purchased coverage for an annual premium of \$25.00. Boone County was the first in Illinois to complete sign-up for the new group life insurance program.

During the district caucus at the IAA Annual Meeting, past Boone County Farm Bureau President Jim Cannell was elected to the IAA Board of Directors to represent District 1.

A Polaroid camera was purchased to take pictures of Farm Bureau programs and events.

1964

The Board of Directors voted to amend the organization's bylaws to raise the dues from \$21.00 to \$25.00 beginning on March 1. The loan in the amount of \$20,000 for the new building was paid off.

Boone County has its first I.A.A. Director, James P. Cannell, Capron. The Farm Bureau Board appointed Max Newport as the first Chairman of the Young People's Committee in Boone County.

Miss Rita Carter began her Country Companies Claims career as a Claims Assistant on December 1st.

Farm Bureau allotted \$450 to purchase a 10' X 80' strip of land on the east side of the Farm Bureau building.

1965

Robert Newport was elected President.

The Boone County Farm Bureau presented the final payment to First National Bank and burned the Farm Bureau Building mortgage at the 45th Annual Meeting on February 12.

The first meeting of the Farm Bureau Young People's Committee was held on February 4 at the Farm Bureau building. Serving on the first committee were: Mr. and Mrs. Max Newport, Mr. and Mrs. Thomas Hyland, Mr. and Mrs. John

Pollnow, Mr. and Mrs. Clifford Camp, Mr. and Mrs. Rover Lyford, Mr. and Mrs. Roger Stennerson, Mr. and Mrs. Don Waterman, Mr. and Mrs. James Yates, and Mr. and Mrs. Ronald Aves.



The Women's Committee prepared a mobile illustrating the various activities of the Farm Bureau organization. The mobile was hung at the Sherman House in Chicago during the IAA Annual Convention. Mrs. Florence Thomas, American Farm Bureau Federation, was so impressed she requested to have it on display at the AFBF Annual Meeting.

The Farm Bureau building received a face lift with a new vestibule which was built on the west side of the Farm Bureau Building.

1966

Rick Martin of Belvidere received a recommendation and a loan of \$5,000 from the IAA to attend the University of Illinois, College of Medicine. The program was established to encourage young men to become general medical practitioners and to open their practice in rural communities in Illinois.

Over 369 members received a free gate sign with their name imprinted on it during the Young People's Committee Farm Bureau Gate Sign promotion. The purpose of the promotion was to remind people of the organization. The Women's

Committee co-sponsored a successful driver improvement course during March. There were 40 men and women that took part in the course that was sponsored in conjunction with the IAA Country Insurance Companies and the Illinois State Police.

Herb Walberg won the Illinois Farm Bureau Young People's Discussion Meet during the Illinois Agricultural Association Annual Meeting. The topic of the meet was "The Role of Farm Bureau Ten Years from Now." He went on to win second place at the American Farm Bureau Federation's national competition.

In conjunction with the primary election, a county Extension referendum carried in every precinct in the county which would provide tax monies as the major source of local funding. The referendum relieved Farm Bureau as the main provider.

1967

The Board of Directors took action to approve a title change for the county's Secretary of Organization Kenneth Harris to Executive Secretary. This action was taken due to the action of the voting delegates at the 1966 IAA Annual Meeting.

On April 21, 1967 a violent EF4 tornado, one of ten tornadoes that whipped across Northern Illinois and hit Belvidere just before 4 p.m.

Baby farm animals attracted a lot of fair-goers into the Farm Bureau tent at the County Fair. The animal attraction was organized by the Young People's Committee.

The Board voted to provide a new service to Farm Bureau members called Agriculture Business Service Company in Boone County or ABSCO. It was an easy, effective data processing record





system for farmers. Air conditioning was installed in the Farm Bureau building.

1968

The Boone County Young Farmers held their 2nd Annual Young Farmer

Banquet in February. The meeting was held at the Farm Bureau building and the guest speakers were Robert Mitchler, Illinois State Senator, and Carl Pape, Illinois Township Officials Association. The purpose of the get together was to help young farmers get better acquainted.

Linda McEachran, daughter of Mr. and Mrs. Russell McEachran, won the northern Illinois area Young People's Talent Find contest. She sang vocal numbers from My Fair Lady. She represented the area in the state competition during the IAA Annual Meeting.

On October 1, the Farm Bureau hosted a meeting for regular members to discuss what the Farm Bureau should be doing for agriculture.

1970

Belvidere High School student Gary Marrs and North Boone High School student Allen Flynn attended the January board meeting and reported on their trip to the FFA Holiday Conference and IAA building.

The Farm Bureau voted to turn over the animal health product inventory to the Boone County Service Company during their January meeting.

James Cannell was presented a plaque by the Boone County Farm Bureau for being the first IAA Director from Boone County.

1971

The Belvidere High School Choraliers entertained the members attending the Annual Meeting during dinner. The Mink Barn sponsored a style-show at the end of the meeting.

Roger Cummings went to Washington, D.C. to meet with Congressman JB Anderson to seek support for Farm Bureau's positions on farm labor, farm marketing-bargaining and preservation of US agricultural export markets.

The Farm Bureau Board sponsored a tour of the Chrysler Plant in March for Farm Bureau members.

There were 182 people interested in touring the plant, but Chrysler officials limited the number to 110.

Farm Bureau Women's Committee worked with the Superintendent of Highways, the State Highway Department of Elgin and Mr. Harold Stroud on an easement to clear the visibility on a hill on Route 76 and Orth Road.

1972

Gary Turner, Boone County Farm Bureau President, served on the IAA National Issues Subcommittee. The committee went through the resolutions submitted by county Farm Bureaus and determined which ones would go before the delegates at the IAA Annual Meeting.

During the Boone County Fair, Ruby Turner was named the Boone

County Farm Bureau Woman of the Year. She was a charter member of the county's Farm Bureau Women's Club and served as chairman of the group for the years of 1968-71.

Mr. Farm Bureau, a 10-foot statue of a farmer, greeted people at the Farm Bureau Building during the Boone County Fair. A mobile home was rented instead of a tent by the Farm Bureau during the fair for a comfortable setting.

The farm of Donald and Norma Gesell was the site for a Muscular



Dystrophy Carnival sponsored by the Women's Committee.

The money raised during the carnival was given to the charity.

The Boone County Farm Bureau Board of Directors voted to increase the membership dues to \$30 at the December Board meeting. The increase was to support the \$3 increase the IAA delegates voted on during the IAA Annual Meeting

1973

In February, the Farm Bureau sponsored a bus trip to the Board of Trade, Mercantile Exchange, and the John Hancock building in Chicago for Farm Bureau members.

WGN radio's farm director, Orion Samuelson, was the featured speaker at the Boone County Farm Bureau and Service Company's Annual Meeting.

Samuelson's address was on the need for a more positive image of farmers. Robert Newport was elected President.

Young Farmers sponsored a farm tour for the Belvidere Jaycees and their families. The first stop was Herb Walberg's farrow to finish



The first Agriculture Business Service Company services were offered.

1969

Gary Turner was elected President.

Wayne Randall of Poplar Grove was announced as a district winner in the annual Illinois Food Poster Contest at the IAA Annual Meeting.

Boone County had the highest percent net gain in membership in the state during 1969.



I BOONE HISTORY

hog operation. Then they stopped at John Pepper's dairy operation. Paul Andersen hosted the final stop at his feeder cattle operation.

The Women's Committee sponsored a contest to name the "smartest dresser" mannequin. The mannequin was dressed in safety equipment including a hard hat, ear muffs, protective goggles, respirator, protective gloves, and hard toed shoes. Jerry Camp was the winner in the contest. His name suggestion was Safety Sam.

1974

The Farm Bureau and Commonwealth Edison coordinated an energy meeting in February. The program included topics on electric corn drying, house heating, security lighting, and hog house heating.

Miss Judi Ford was honored as Mistress of Ceremonies at the Food-O-Rama sponsored by the Merri Milk Maids and Farm Bureau Women in January.

Three Farm Bureau Women- Norma Gesell, Carol Newport, and Ann Turner- were named as one of seven groups in the nation to receive a "Top Op Salute" from the "Top Op" farm magazine. They were recognized for their program, "Food-the Best Buy".

The Board contributed \$1000 to the statewide "Come Back to Meat" campaign. Central Grain, Poulterers, Garden Prairie Grain, and Wallem's also contributed to the promotion.

During the July Board meeting, the Board voted to install Market Line. Members could call a recording after 4:30 p.m. each day for the day's market of livestock, corn, wheat, and beans.

1975

Twenty-five pork producers attended a meeting to form the Boone County Pork Producers at the Farm Bureau office on April 15. The producers voted to begin such a club, elected directors and set dues at \$5.

The Belvidere Police Department and Farm Bureau Women's Committee sponsored a Bicycle Safety-Fun Day at the Dari Ripple parking lot in June. A bicycle was given away as a prize.

The Young Farmers challenged the Belvidere Jaycees to a greased pig contest at the Boone County Fair. The Jaycees won the contest and were awarded a check

for the value of the pig that went towards the Sidewalk 76 project. After the Young Farmers/Jaycees show-down, nineteen 4-H'ers were given the opportunity to catch six greased pigs. The six 4-H'ers who caught the pigs were able to take them home.

The Farm Bureau Board voted to appropriate \$200 to the Jaycees Sidewalk 76 project. The Board agreed that it would alleviate some hazards for pedestrians and bicycles commuting to the fair.

1976

Don Ellingson was elected President.

In cooperation with the Bicentennial Commission, the Farm Bureau organized an antique farm machinery display at the fairgrounds July 3 & 4. Included in the display were a steam engine, old tractors, thrashing machines, wagons, buggies, and plows. The women planned a display of antique household equipment.

The Women's Committee sponsored a Candidates Lunch for the voters of Boone County to get acquainted with the candidates for State Senator, State Representative, and some judicial positions.

Robert Newport accepted a plaque at the IAA Annual Meeting on behalf of Boone County for the achievement in the Farm Bureau Bicentennial Program.

A resolution was unanimously passed at a special Board meeting to raise the membership dues to \$40 a year, effective April 1, 1976.

Bruce Nelson was accepted by the Farm Bureau Board as the new insurance agency general manager at the November Board meeting. Nelson had been the top volume agent in Kankakee County for the previous 3 years.

1977

A \$100 donation was given to the Heritage Days 77 Committee to help support their program.

A sub-committee of the Legislative Committee was formed to plan a Land Use and Tax Information meeting in June.

1978

A mobile health testing unit was parked in the Farm Bureau parking lot during the week of March 20. The Women's Committee sponsored the unit for Farm Bureau

members to have complete physical exams and to promote good health.

Women's Committee volunteers promoted Dean's Food Company's new product called Yogurt. The taste test demonstration was held at Eagle Food Store on June 30.

A total off \$11,052 was spent to remodel the building. New insulation, lighting and ceilings were installed among other necessities.

1979

James Flanders was elected President.

After a long discussion during the April Board meeting, it was agreed to designate \$5000 for the construction of a meeting room in the basement of the Farm Bureau building.

In honor of Dairy Month, the Women's Committee awarded a gift certificate for milk products to the first baby born in Boone County during June.

A position to support the Genoa Road bypass east of Belvidere was taken at the August board meeting.

1980

Russell Anderson was elected President.

The Boone County Farm Bureau and Women's Committee were honored during the IAA Annual Meeting when Norma Gesell was chosen as the District's representative on the State Women's Committee.

Ag promotion held theme- "Food for Thought".

Farm Bureau donates \$100.00 for Heritage Days.

James Flanders was presented an award for past Farm Bureau President.

Board donated \$50.00 for steer show being organized by Dale Rhode.

Parking lot was resurfaced.

During Voter registration at the county fair, 350 voters registered and 60 changes were made.

Ed Mathison explained the drainage problem in Boone County and sent a letter to IAA asking for help.

1981

Kenneth Harris received a watch for 25 years of service as Farm Bureau Manager. Women's Committee presented a skit at Annual Meeting entitled, "That's Funny, You Don't Look like a Farmer."

Belvidere's first Farm City Day, coordinated

by the Farm Bureau Women's Committee, and was held in March. One of the highlights was the cow milking contests. Mayor Francis Whalen beat County Board Chairman Leroy Schroeder in the first event and Sally Klokmeier, Channel 13, beat BDR News Editor Nancy Clegg in the second race. Don Ellingson provided the Holsteins. Don Paulson provided the hayrides on a horse drawn wagon. Don Brockmann sheared sheep for a large crowd and the Belvidere Buckaroos entertained people with their square dancing.

Julie Newhouse and Terry Willis, Belvidere High School Agricultural Occupation Instructors, received a letter from the IAA congratulating them on Belvidere FFA's first place in the 1980-81 Heritage Program for Section 6. They were honored at the State FFA Convention and one student was invited to participate in the Heritage Tour to Washington DC.



The Women's Committee sponsored a series of Beautiful Farmstead contests. The first one, held in January, was the Christmas Lighting contest. Robert Walberg's farm was chosen as first place. A Mailbox contest was held in May and the winners were Henry and Anita Koch. The third contest was a Flagpole contest which was won by Russell Osterberg. Judging was on the basis of general farm appearance, landscaping, condition of the building and an attractive display of Christmas lights, mail box, or flag pole. Each winner won a \$50 Farm Bureau membership.

Farm Bureau's float received 1st place in the industrial group in the Belvidere 4th of July Parade. The theme of the parade was "The Farmer Feeds Them All". PHOTO: July 4 1981 1st Place Float

That September, fifty members of the former group known as the Kountry Kuzzins, reunited at a gathering at Bud and Phyllis Gallano's home. The group of Farm Bureau couples met once a month in the 1950's and 60's to discuss the weather, crops, and family.

Board moved to support Alan Aves as Illinois Secretary of Agriculture.

Dues increased to \$50.00.

A letter was sent to Illinois Farm Bureau to clarify federal laws on the continuation of grain dealers in bankruptcy of elevators. Farm Bureau supported a letter opposing TV commercials on chemicals, an unnecessary expense.

Board donated \$100 to Heritage Days; paid 4-H activities insurance and donated \$50.00 for cattle show.



Young Farmers Committee started.

Member letter campaign to write letters to D.O.T. secretary asking for money needed to pay engineering bill for E-By was held.

1982

The Farm Bureau sponsored a tour of the Byron Nuclear Plant for Farm Bureau members. Approximately 70 members toured the facilities on guided tours by the Commonwealth Edison employees.

Five Boone County representatives attended a meeting with Illinois State Authority for maintenance of bridges that cross the tollway. The Board adopted a resolution during the July meeting urging the Illinois Tollway Authority to assume full responsibility for maintenance on the decks on the bridges over the tollway.

Mr. and Mrs. Max Newport hosted a Des Plaines family July 9-11 during the

Farm Bureau's Farm-City Exchange. The program, sponsored by IFB, WGN Radio and KMOX Radio, was designed to help the farm and non-farm families better understand each other.

Board sponsored Annette Koch in Miss Teen Illinois Pageant in amount of \$120.

E-by pass and abolishing inheritance tax were discussed.

Accepted Glen Coles' application for medical school.

1983

A large delegation of Boone County Farm Bureau members visited the Illinois Capital during a bus trip sponsored by the Legislative Committee. The group met with Senator Jack Schaffer and Representative Ron Wait.

Farm Bureau members lined up to buy gas from the Boone County Service Company during the Farm Bureau Membership Drive. The service company sold gas for \$0.50 per gallon during the drive.

Farm Bureau's basement was completely remodeled. Ralph Hursh was the engineer that helped the Board of Directors with new paneling, carpeting, and lighting.

Jim Mergen, IAA's Dept. of Local Government spoke on the Bonus Landfill.

Board wrote letters to schools promoting the continuation of Ag and FFA in the school system.

The third annual Farm City Festival was held.

Governor Thompson made a commitment to resolve questions of responsibility for maintenance of bridges that cross tollway. Governor Thompson signed bill RE: Bridge Maintenance.

Nova Larson attended "Speaking Out for Agriculture" seminar for Public Speaking Skills.

Donated \$25 to Belvidere High School Choral Group for trip to Europe. Donated \$100 to 4th of July Heritage Days.

Farm Bureau requested that the Boone County Planning Commission, Boone County Zoning Board of Appeals and Boone County Board allow changes in A-2 Zoning District.

I BOONE HISTORY

1984

Ron Karlson was elected President.

Four individuals were honored during the 1984 Annual Meeting. Jim Gang, Patrick Mattison, State Representative Ron Wait, and Senator Jack Schaffer received plaques for their contributions to the passage of the Illinois Tollway Overpasses legislation. Harold Steele spoke at Annual Meeting- Members of the Farm Bureau passed a resolution during the Annual Meeting requesting the Boone County Board "retain the A-2 zone, in name and in context as it had been in Boone County Ordinance since its inception in 1978".

Women's Committee and Country Companies promoted the new car seat safety law and gave a car seat to the first baby born in July. The baby had to be born in Boone County and to a Farm Bureau member. The winner was Mr. and Mrs. Timothy Austin.

Board voted to decline the board resolution of 11-14-83 and to support intent of planning commission.

Carol Sisson was appointed Ag in the Classroom Coordinator for District 1. She served the district as a resource and expert in education and agriculture.

Donate \$200 to Growth Dimensions.
Donated \$100 to Heritage Days.

Young Farmers visited the Chicago Board of Trade. Women's Committee held neighborhood watch meeting. Women's Committee toured ethanol plant in Rockford.

Broke ground for E-By.

1985

William Cleland was elected President.

Belvidere Mayor Bud Barr presented a plaque to the Farm Bureau Women's Committee Chairman Agnes Mathison and declared it Ag Week during National Ag Week.

A position to oppose the appointment of a public building commission was taken by the Farm Bureau Board. The reasoning for the objection was the Farm Bureau felt that expense of that nature should be decided in a referendum by the voters.

Kenneth Harris received a camera for 35 years of service and a plaque for 30 years.

Planned tour of Greater Rockford Energy

and Technology Corporation. Ron Wait and Lynn Martin met at North Boone on school financing. Board submitted Ed Mathison's name for member of Building Commission. Discontinue Market Line.

1986

Tenure changed to three 3 year terms.

Sent proposal to IAA and copied each of the 97 County Farm Bureaus on proposed dues structure.

Tom Hyland helped organize a "Hay to the South" program for drought stricken farmers.

Reorganization meeting for Young Farmers was held. Women's Committee considered Ag-Day instead of Farm-City Day.

Associate member dues went from \$50 to \$20.

1987

Kenneth E Harris announced his retirement on February 1 after 37.5 years of service.

Mike Hodge was hired as the Farm Bureau Manager. Ed Mathison was elected President.

Women's Committee organized the first Ag Days program for the third grade students of Boone County. The classes that attended learned about the "Then and Now" of dairy, swine, soybeans, corn and wheat.

Commonwealth Edison established a rate rider option to allow farmers with grain drying facilities to move to winter rate 9/15.

Donate \$50 to 4-H Foundation.
Ron Smith, Boone County Service Company Manager resigned after ten years of service and took the General Manager's position at Mer-Rock FS in Aledo, IL. Neal Brandt replaced Ron Smith as Boone County Service Company's new general manager.

1988

Dean Sears, IFB Legislative Staff presented Ed Mathison, Boone County Farm Bureau President with the Liberty Bell Award.

Purchased a computer and completely remodeled the office space upstairs.

On November 1, forty women attended the Women's Committee Acquaintance Program.

Ellen Culver, IAA Women's Committee Representative, explained the Farm Bureau Women's Committee at both the state and county level. Women's Committee members reported on Boone County's projects.



1989

On July 26, the Farm Bureau and Country Companies held an Open House at the newly remodeled office for the Chamber of Commerce members.

The second annual Old Fashioned Sunday in the Park was held by the Women's Committee in conjunction with the Park District. The Farm Bureau set up a display of old fashioned tools, an animal display and held a milking contest.

Mike Hodge, Farm Bureau Manager accepted the position of Randolph County Farm Bureau Manager and resigned. Tom Verry replaced Mike Hodge as Farm Bureau Manager.

1990

Ninety paramedics and firemen from Northern Illinois instructed on farm accidents during the "Man Down on the Farm" program sponsored by the Women's Committee, Life Line, Capron Rescue, Northern Illinois Mobile Intensive Care Program and the Boone County Volunteer Firemen.

1991

Eric Nefstead, Channel 13 Weatherman, and Roger Norem, Senior



Market Analyst for Agrivisor, spoke to 70 people at the Market Outlook meeting.

Legislative Committee Chairman, Agnes Mathison, spearheaded an effort to register 18 year olds to vote. She set up a table at North Boone High School which gave the seniors an easy opportunity to register to vote. She registered 38 students during the promotion.

The first Kid's Safety Expo and first AG Olympics events were held.

Madeline Schultz, Julie Newhouse, Kerry Kenny, Karen Kenny, and Marshall Newhouse competed in the 1992 Ag Olympics.

John Reid, Farm Bureau Scholarship Committee Chairman, and Ed Mathison, President, awarded Brian Finnestad and Tracy Meyers ag scholarships for their leadership and motivation to major in agriculture in college.

Bonus Township farmer, Jim Marrs, testified on wetlands in front of the Government Operations sub-committee on Government Information Justice and Agriculture in Freeport.

Farm Bureau passed a unanimously to "support the referendum to increase the county Cooperative Extension Education Fund rate."

1992

Jim Fraley, IAA Commodity/ Livestock Program manager, presented an animal activism workshop at the Farm Bureau building in March.

A Customer Appreciation Day was held in July by Farm Bureau, Country Companies, and Riverview FS. There was free food, balloons, watermelon, a pedal tractor pull and free shots at dunking your insurance agent during the festivities.

Dan Markay, Market Analyst and President of AgriAnalysis, conducted a five week seminar for Farm Bureau members. Thirteen farmers attended the meetings that covered hedging, options, trading, and "How To Make Money Farming".

FS and Farm Bureau built the pavilion at the Fair.

1993

Gave the outside of the Farm Bureau a facelift with new awnings. The pavilion at the fairgrounds was enclosed.

Growth was knocking on farmers doors. A marketing meeting was organized for Farm Bureau members in April to talk with local officials about the effects of growth in rural areas. A teleconference call with a California Farm Bureau manager was made during the meeting. She discussed how they have dealt with growth and gave the farmers advice.

An introductory meeting for a combined Prime Timers group was held on April 16 at the Winnebago County Farm



Bureau office. Eric Nefstead briefed the group on the upcoming weather patterns. Ellen Culver, IAA, discussed other similar groups already established in Illinois. The group then decided to form a joint Prime Timers group.

The Women's Committee drove to Lincoln Park Zoo for a dairy promotion at the Main Barn located in the "Farm in the Zoo". The committee churned butter and served it on crackers to students. Educational materials were given to teachers.

Ray's Sporting Goods, Flower Bin, Baskin Robbins and Hammertime Sports were the first businesses that offered discounts through the Farm Bureau's new Membership Discount Program.

1994

Approved the addition of an 8 x 12 storage shed to be built next to the Farm Bureau office.



Ag area zoning will likely be established in Manchester Township.

The Farm Bureau discussed converting from monthly dues to single anniversary dues process on January 1. The intention of the conversion was to make every member due April 1, instead of the month they joined.

Brian Brockmann and his family hosted Congressman Don Manzullo and Farm Bureau leaders at his farm for a tour of his hog operation. The program was held by the Legislative Committee to show the Congressman.

A CDL Course was sponsored by the Young Farmers Committee. Twenty-five people took the morning class and successfully passed the written exam during the afternoon.

The Pomona Grange, NFO, Soil and Water Conservation District and Farm Bureau cooperated together to draft a Farmland Awareness Resolution. The groups presented it to the County Board which approved the document. The County Clerk was instructed to give a copy of the document to people when they obtained a building permit.

Cake and ice cream were served at the Farm Bureau's Pre-75th birthday party. Past presidents and other Farm Bureau leaders looked through pictures from the past and reminisced about past events.

The Farm Bureau worked in cooperation with Riverview FS, Pillsbury/ Green Giant, Belvidere Bank, and K-B Farms to buy a FarmDayta 2 unit for the Belvidere High School Ag Department. The unit would give the ag students the ability to learn about grain merchandising through the satellite information system.

Farm Bureau members sold clothes, trinkets, crafts, furniture, etc. at the Farm Bureau's parking lot sale.

1995

Boone County Farm Bureau celebrates their 75th Anniversary. Larry Anderson was elected President.

The County Board investigated ways to keep Rockford from annexing into Boone County. Farm Bureau produced a brochure explaining the pros and cons on living in Boone County. Farm Bureau partnered with the Boone County Health Department and the Illinois Department of Public Health on a well sealing demonstration at

I BOONE HISTORY

the Noble farm. Gary Klinefelter hosted a group of Australians for a tour of their dairy operation. The Young Farmers' Committee donated ag books to the Lincoln, Washington, and Poplar Grove Elementary schools as well as the Ida Public Library. Farm Bureau adopted a two-mile stretch of Hwy 173 from Poplar Grove Road east as part of the Adopt-a-Highway program. The misuse of SMV emblems was a concern. The Women's Committee worked with the Sheriff's department; drafted a letter on the Sheriff's letterhead and sent to violators. Deputies followed up if no action was taken.

Jennifer Beard resigned as Farm Bureau Manager. Robb Mohr replaced Jennifer as Farm Bureau Manager.

Boone County Farm Bureau received the 1995 Illinois Farm Bureau Presidents Award for Membership Group II. IAA President Ron Warfield presented the award to Ed Mathison, Boone County Farm Bureau President at the 1995 IAA Annual Meeting.

1996

Robb Mohr resigned as Farm Bureau Manager. Tammy Wakeley was hired as the part time bookkeeper.



Roger Christin, Winnebago County Farm Bureau Manager, assisted Boone County Farm Bureau until Melissa Blythe was hired as the Farm Bureau Manager.

The Young Farmers hosted an Ag Olympics at the Boone County Fair. A tire drive was held at the Riverview FS McKinley Ave location. An Investment club was started with five members and a deposit of \$40 each. By October, the Investment Club had 20 members. Farm Bureau held a workday to paint eaves and repair windows. Boone County was one of eight that participated

in the IAA grant program. The Women's Committee volunteered for Meals on Wheels. The Newsview publication changed to a one-page insert published monthly for voting members and a four-page insert in FarmWeek and the Almanac quarterly for all members.

1997

The bylaws were amended to include spousal memberships. The Board opposed the idea of elk introduction in Southern Illinois. The Young Farmers held an oil drive, a battery drive, and had an ATV and tractor safety display at the fair. The Women's Committee churned butter at the Lincoln Park Zoo, Chicago for a dairy promotion. Larry White built an egg incubator for the Ag in the Classroom program.

The Marketing Committee organized the first Dairy Breakfast on June 21. The Dairy Breakfast was hosted by Ron and Sylvia Mueller, Garden Prairie.

1998

A golf tournament was held at Swan Hills Golf Course. The Fitzgerald Dairy hosted the 2nd Annual Dairy Breakfast on June 27. An estimated 600 people attended the Breakfast. The Young Farmers Committee created a SMV display for the fair; continued to sponsor the Ag Olympics and held a tire drive. The Women's Committee popped popcorn in soybean oil at the fair as part of their soybean promotion. A two-day Safety Expo was held for Boone County for 700 fourth grade students and teachers. The Board donated \$1000 to the Science and Industry Museum in Chicago for their new ag exhibit.

1999

Joedy Ulrich volunteered to host the 3rd Annual Dairy Breakfast on June 26. The Breakfast made a profit of over \$2,800. Fred Hildebrandt volunteered to host the 2000 Dairy Breakfast.

Term limits were established. Directors could serve no more than four consecutive terms. Directors who served four consecutive terms were not eligible for re-election until at least one full term had intervened from the date he last held office. The Board approved the organization of a Foundation to provide ag scholarships. Melissa Rhode accepted a position at the

Illinois Farm Bureau office and resigned as Manager. Jane Bickelhaupt was hired as the Farm Bureau Manager.

The Women's Committee churned butter at the Lincoln Park Zoo for 5,000 kids; hosted Ag Days and the Safety Expo (640 4th grade students participated in the Safety Expo); volunteered for Meals on Wheels and held a soybean promotion.

2000

Jane Bickelhaupt resigned, and Becky Champion was hired as the Farm Bureau Manager.

Fred Hildebrandt family hosted the fourth Dairy Breakfast up on the Stateline. Approximately 2000 people attended. A Bossy Bingo and Petting Zoo were added. Farm Bureau donated \$50 to Crimestoppers and \$50 to Heritage Days at the fairgrounds. The Board purchased 15 tables and 120 chairs for the meeting space in the basement.

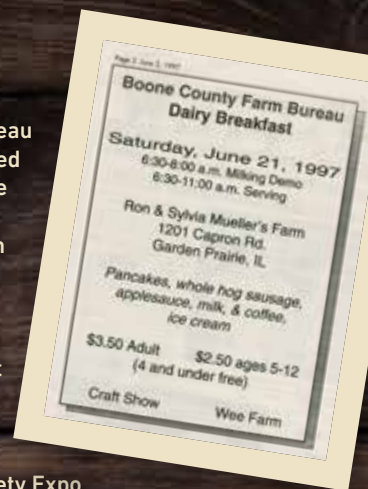
2001

Boone County Farm Bureau volunteered to be a pilot county for the new Access membership database. The bylaws were amended to elect nine directors at large in place of townships.

Approximately 150 members gathered at Spencer Park for the Member Appreciation Picnic in September. The Young Farmers sponsored the Ag Olympics and a Milk Mustache Contest at the Fair. The Young Farmers Angel Tree program collected gifts for over 250 needy children during Hometown Christmas.

2002

Boone County Farm Bureau partnered with Stephenson County Farm Bureau to purchase a bar code scanning gun to help process membership. Farm Bureau offered to pay the Centennial Farm and Sesquicentennial Farm application fees for members. This kicked off the Centennial Farms project and a display was created for the fair. Information collected from the



display was shared with the Boone County Historical Society.

Wind farms were proposed in Boone County. Discussion began on the proposed Crow's Foot Conservation Area.

Becky Champion, Farm Bureau Manager resigned. Ann Marie Cain, former Massac County Farm Bureau Manager replaced Becky Champion as Farm Bureau Manager.

Women's Committee continued to host the fourth-grade safety expo and the Young Farmers hosted the Angel Tree toy drive. The Women's Committee sponsored a Bicycle Helmet Essay Contest.

2003

A Renewable Energy Committee was created. Boone County Farm Bureau partnered with neighboring County Farm Bureau to host a Farm Bureau booth at the Northern Illinois Farm Show. Farm Bureau hosted informational meetings on wind farms. U.S. Senator Peter G Fitzgerald met with 35 Boone and Winnebago CFB members at the Farm Bureau office.

There were over 1,000 people served at the Annual Dairy Breakfast hosted at the Boone County Fair Grounds.

The Boone County Farm Bureau and Boone County Extension Office sponsored a six week after school program at Perry Elementary School. The class consisted of 20 third through fifth grade students. Each week the students focused on a different subject.

Farm Bureau sponsored a tour to a wind farm in Wisconsin for the Boone County Board members and staff.

2004

Farm Bureau co-hosted the 2nd Annual Northern Illinois Bowling tournament at Forest Hills Lanes, Rockford.

In the spring, approximately 60 students from Immanuel Lutheran School toured the Brockmann Farm in Cherry Valley. There were 575 third grade students that attended Ag Days.

2005

An Animal identification meeting was held in March regarding the new COOL (Country of Origin Labeling) labeling dealing with livestock. Farm Bureau leaders worked with many Legislators on drought relief.

Ann Marie Cain, Boone CFB Manager, and Roger Christin, Winnebago CFB Manager, teamed up to teach students about groundwater at the 2005 Groundwater Festival held at Rock Valley College.

2006

Boone County AITC recieved a \$300 Safety Grant from IFB and Country Insurance for their Safety Expo. The Illinois Forage Expo was held in August at Hildebrandt Farms.

Young Leaders, Women's Committee, and Prime Timers held a number of activities from farm tours, Dairy Breakfast, Ag Olympics, Ag Expo and Safety Days as well as hosted a number of Prime Timers events.

577 fourth graders to the Safety Expo.

Scot and Kim Sell were named the District 1 winners of the IFB Young Leader's Achievement Award at the annual District 1 Ya'll Come meeting. Scot also won the Young Leader Committee Chair Award.

2008

Defensive Driving Course was offered. Scot Sell participated on Illinois Farm Bureau's Action Team.

Boone County Farm Bureau co-sponsored a Local Government Conference in August at the Winnebago County Farm Bureau.

Boone & Winnebago county FFA students toured the Department of Homeland Security's Customs and Border Patrol at the O'Hare International Airport for this year's FFA Acquaintance Day program.



2007

Area Farm Bureau leaders met with Congressman Manzullo to discuss the 2007 Farm Bill.

Boone County Elementary Schools brought

2009

Boone County Farm Bureau hosted a "Strategies of Reducing Energy". There was an energy auditor on hand to speak.

The Bruce Stennerson's farm was the first farm to be accepted for an Agriculture Conservation Easement in Boone County.

The Annual Dairy Breakfast was held at Jim and Marilyn Turner's farm and served 1100.

I BOONE HISTORY



Larry Anderson and Gary Shedd flipped pancakes for 550 guests.

A special meeting was held on August 2, 2012 to consider and vote on a proposal to merge the Boone County Farm Bureau into the Winnebago County Farm Bureau.



Boone County Fire Protection District No. 2 and the Boone County Farm Bureau co-sponsored a Grain Bin Entrapment and Rescue Class in October on the Marrs' farm.

2010

There were over 1000 in attendance at the Ward-View Farm for the Dairy Breakfast.

The Ag-Zibit at the Discovery Center in Rockford opened. Boone County Farm Bureau along with neighboring County Farm Bureaus worked with the Discovery Center for four years to bring the Ag-Zibit to life.

Larry Anderson, Boone County Farm Bureau President, participated in Belvidere Central Middle School's "Careers on Wheels" program for 400 eighth grade students.

Farm Bureau sponsored the fourth grade Safety Expo for 330 students.

2011

The Dairy Breakfast was held at the Boone County Fair grounds and served around 700 people. The Safety Expo had 300 fourth graders in attendance.

Ann Marie volunteered to take a pay cut to decrease expenses. Manager and Membership Secretary worked four days a week. Sheri Lee, Membership Secretary and Bookkeeper retired at the end of the year. Merger talks with Winnebago County Farm Bureau began.

2012

The Farm Breakfast was held at Susie's Garden Patch, Garden Prairie. Ron Karlson,

The mission of the Boone County Farm Bureau was "To be the advocate, voice, and resources of agriculture that educates and enhances the lives of the entire community."

ED MATHISON AWARD

The Ed Mathison Award was started by the Boone County Farm Bureau and was first awarded to Ed's wife, Agnes Mathison in 1995. The Ed Mathison Award was designed to recognize Farm Bureau Members and Boone County Residents for their many contributions to the agricultural community.

1995	Agnes Mathison
1996	Wallace Reynolds
1997	Norma Gesell
1998	James Cannell
1999	Donald Ellingson
2000	Kenny Harris
2001	Bob Newport
2001	Bob Newport
2002	Fred Hildebrandt Family
2003	Joe Poulter
2004	Gary Turner
2005	Maxwell Newport
2006	Donald Meier
2007	Russell Anderson
2008	Donald Gesell
2009	Thomas Kniep
2010	Warren Paulson
2011	Robert R. Mickey
2012	Larry Anderson

MEETING OF MAY 8TH, 1920

The first meeting to organize a Farm Bureau in Winnebago County was held in Memorial Hall, Saturday afternoon, May 8th. The meeting was called to order by J.W. Robbins, W.H. Mackey being appointed temporary secretary for the meeting.

Mr. J.D. Bilsborrow then addressed the meeting telling of co-operation of all the local organizations being needed to make the Bureau a success, and the Bureau must take up the most needed improvements in the county, and in order to do so, must have:

1. Money
2. Good men behind it, and
3. A good county agent.

Mr. Sailor of the State Association then told of the need of the county bureau being founded on the state organization to be a success. He also explained the different departments in the state organization and stated that every county in the state would be in the state organization by August 1, 1920.

Mr. Bilsborrow then took charge of the meeting. On a roll call of all townships in the county it was found that everyone present was in favor of organizing at once. A motion was then made and seconded that a temporary organization be organized. Carried by a unanimous vote. Motion made and seconded that the organization be called Winnebago County Farm Bureau. Carried by unanimous vote.

Nomination of temporary chairman was asked for. Nomination made by W. Johns and seconded by E.M. Breckenridge that Homer Hitchcock act in that capacity and there being no other nominations he was elected by unanimous vote. Mr. Hitchcock not being present a committee of three, Chairman Frank Johns, W.L. Potter and Henry Schwartz, Jr. were appointed to notify him of his election.

Nominations for temporary secretary and treasurer were then called for. Motion made by L. Frisbie and seconded by R. Coffin that W.H. Mackey serve in this capacity. There being no other nominations the vote was called and carried by unanimous vote.

Mr. Bilsborrow then told of need of joining state bureau, a three-year membership term being used, each member paying \$15.00 per year, \$10 to go to local bureau and \$5 to the Illinois Agricultural Association. Mr. Potter then moved we join the Illinois

Agricultural Association. Motion seconded by Mr. Colburn. Motion carried by unanimous vote.

Mr. Bilsborrow explained the plan of membership committed as used in organizing a bureau and on motion by Mr. Belshaw and seconded by Mr. Schwartz the plan of township chairman was adopted by unanimous vote. The following chairman being appointed.

Homer Hitchcock..... Chairman
 W.H. Mackey Secretary
 Cherry Valley..... W. Rayman, Cherry Valley
 Guilford..... W. Frank Reid, R. 3, Rockford
 Harlem..... Herbert Conklin, R. 2, Roscoe
 Roscoe C.F. Tiffany, Roscoe
 Rockford L.D. Brown, R. 2, Rockford
 Rockton..... R.S. Bradt, R. 2, Rockton
 Winnebago W.R. Hollenbeck, R. 7, Rockford
 Burritt Neil Gale, R.3, Pecatonica
 Harrison Job Carpenter, R. 2, Rockton
 Shirland W.B. Spanswick, R. 2, Rockton
 Seward E.C. Burch, R. 3, Winnebago
 Laona Roger Patterson, Durand

Secretary notified to send letter to each chairman of a meeting that had been voted to be held Wednesday, May 12 at 8 P.M. at Memorial Hall.

Funds for carrying out the plans for the campaign were asked for and 17 men paid one year's dues of \$15 per man giving a total of \$255.00.

Meeting adjourned.

HISTORY

The formal organization of Farm Bureau was preceded by the co-operative efforts of local farmers to buy supplies, improve seeds, sell livestock and get help and advice on farm problems. The help and advice came with some early farm institutes and some work in helping youth in the county directed by the first Farm Advisor, Albert Ten Eyck. The need for a stronger and more active organization and the desire to have the Extension Service with an advisor available, prompted many individuals and the County Grange and Local Press to organize Farm Bureau. On June 12, 1920 there was a formal organization of Farm Bureau with a total of 947 memberships. Officers were nominated and elected as follows: E.F. Derwent, President; R.S. Bradt, Vice President; W.H. Mackey, Secretary-Treasurer; with the following Executive Committee: E.C. Burch, Winnebago; C.E. Austin, Rockton; G.F. Tullock, Rockford; George Atwood, Roscoe; S.E. Hoisington, Stillman Valley; and Ashley Hartman, Davis.



1920

On July 7, the committee reported that office space was available at Mr. Engstrom's in connection with the Milk Association. Mr. Charles Keltner was selected to be the County Farm Advisor on August 3.

The first office of the Winnebago County Farm Bureau was in the basement of the Rockford Court House and was only open on Saturdays. (Photo was taken from Postcard History Series: Rockford 1900- World War I by Eric A Johnson.) The main office phone number was 3898.

1920-21

In January it was decided to form a temporary buying organization to take care of the immediate demands for farm supplies such as binder twine. A committee endorsed plans outlined by Mr. Keltner to re-organize the shipping association.

A meeting was called with the executive committee of the Grange and the Farm Bureau Executive Committee to work out the plans for the rest of the year.

Mr. Leland Gilmore requested a Community meeting to educate members on Farm Bureau. The committee took action to improve country roads and worked on weed control. Non-members were charged 1 cent per lb. to pool and ship wool. The President appointed a committee to look into the matter of taxation and the relative assessed valuation in Winnebago County and adjoining counties. A committee investigated the purchase and distribution of Hog Cholera Serum and organized educational demonstrations.

A committee was appointed to see if other more commodious quarters for office purposes could be found in the Court House and also outside the Court House. Mr. Keltner suggested the possibility of getting the Men's Lavatory in the old part of the Court House. Farm Bureau thanked the Board of Supervisors for new quarters made available in the Court House.

Mr. Keltner told of the claims made by a member of a New York firm who was selling Swedish oats and other grains. It was resolved that it was unwise for farmers to pay a fancy price for seed grain varieties which had not been tested and recommended by our own state experiment station for growing in this area. The Farm Advisor purchased the necessary

equipment to analyze limestone. The Farm Advisor was authorized to purchase either a battery or generator to operate the motion picture outfit recently purchased.

1923

The President appointed the following committee to investigate the formation of Calf & Pig Clubs: Russell Coffin, Leo Martin, John Logan, Robert Colville and Gust Anderson. W.D. Whitney made a motion to appoint a committee to form a County Cow Testing Association. The Farm Bureau paid for alfalfa seed used in experimental plots on the Breckenridge Farm.

The Secretary wrote a letter to the Business Manager of the Morning Star to express our appreciation of the special Farm Bureau edition and hoped they would make this matter an annual affair. The matter of a protective association was discussed with Deputy Harry Baldwin. "It seemed the consensus of opinion that the Farm Bureau give the members protection and furnish two signs to each member."

1924

Mr. Tullock reported on the Grass Seed Committee's seed purchase from Condon Bros. Mr. Keltner used his discretion and carried out experimental work on the sandy lands in the northern part of the county. The purchase of a limestone crushing outfit was considered. Mr. Keltner received two weeks' vacation after four years of employment.

I WINNEBAGO HISTORY

1925

Township meetings were held, and the township chairmen were elected. A committee was appointed to look after Tuberculosis eradication. The Farm Advisor and the County Board of Supervisors partnered together to put on a groundhog eradication campaign.

The Boy's and Girl's Club work was selected as one of the major projects of the Farm Bureau. The Farm Bureau bought seed oats and seed corn for the Boys of the Boys Club. The Club Committee was authorized to expend not more than \$100.00 in premiums.

Mr. Whitney reported that the \$2,000 quota allotted to our Farm Bureau by the I.A.A. as a relief contribution for storm damage had been oversubscribed.

1926

Farm Bureau entered into the Field of Insurance with the newly organized Mutual Auto Insurance Company. Farm Bureau financed three meetings of the Farmers' Luncheon that met regularly in downtown Rockford.

1927

Mr. Hitchcock, the newly appointed Insurance Agent, reported that he had signed 16 Farm Bureau members and sold 38 insurance policies in 24 days. Counties were asked to make co-op livestock marketing a major project next year. Winnebago County Farm Bureau signed a memorandum agreement with the livestock marketing department of the I.A.A.

1928

The County Advisor investigated the feasibility of marking chickens to prevent theft. The Winnebago County Farm Bureau supported the life insurance project of the Illinois Agricultural Association.

1929

Mr. Marlowe was employed as the 4-H club leader. Farm Bureau covered all his expenses plus paid a salary of \$200 per month. The Treasurer's report for July 1, 1929 showed that the Farm Bureau operated within its income and was in sound financial condition. A committee

was appointed to investigate the Farm Supply Oil Business in other counties, and a meeting was called to discuss the need for forming an oil agency in the county.

1930

Resolution was passed that the controlling boards of the Farm Bureau and Winnebago Service Company shall be the same.

1931

The board secured a one-year lease for the store property at 602 West State Street to be the first permanent office. Honorable John T. Buckbee spoke to the committee on the importance of concerted action in protesting the reapportionment of the State. The Farmers Association gave \$500 to the Farm Bureau Treasury to promote the 4-H Club work in the County. The committee proposed the following changes in the Winnebago County Farm Bureau Constitution: the place of business and meeting shall be at the Farm Bureau office; the fiscal year shall be changed to end December 31st of each year; the officers shall be elected from the Board of directors, by the members of that board and that the term of office shall be for one year or until their successors have been elected and qualified; and the term of the nine directors shall be three years, three of whom shall be elected each year.

1932

On February 6, Mr. Jepson was hired as a 4-H club leader. The Board expressed appreciation to the Farm Advisor for his offer to reduce his salary. A committee was appointed to investigate the possibility of Farm Bureau owning their own building. Mrs. Helen Berg was appointed as Special Agent for the Insurance Department to serve in Winnebago County. The Winnebago County Farm Bureau went on record supporting the crop reduction program purposed by the IAA. The IAA Annual Meeting was held in March in Rockford. The board approved the employment of Mr. Fred Weber as Club Leader for two months.

1933

The legislative committee reached out to all of our legislators requesting their support of the Lantz bills.

1934

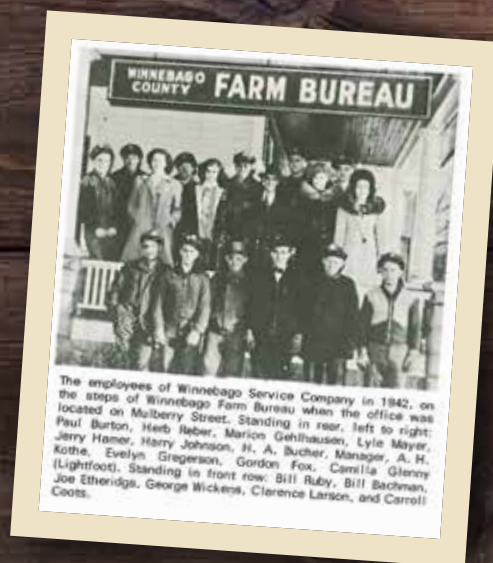
Farm Bureau member received a written invitation to a meeting of the Livestock truck owners, operators and others who were interested in discussing the shipping of livestock in the County. The Winnebago County Farm Bureau went on record favoring agricultural limestone as a project and they informed Winnebago County Civil Work Administration and the Board of Supervisors. The Winnebago County Farm Bureau contributed one cent per member to fund a trophy which was presented to Mr. Tullock at our Annual Meeting for his long years of service on the IAA board. Mr. Shade was employed as the Assistant Farm Adviser. Two months later he reported he had re-signed eleven 4-H Clubs and six new clubs. The Winnebago County Farm Bureau adopted the Agreement between the Winnebago County Farm Bureau and the Illinois Agricultural Association and County Organization director. The Winnebago County Farm Bureau went on record as being opposed to Daylight Savings Time.

1935

Mr. Harold L. Jepson, Assistant Adviser, replaced Robert A. Baker as Farm Bureau Organization Director following Baker's resignation.

1936

A committee was appointed to purchase of the Richenbaugh property at 603 Mulberry



Street for consideration of \$8,000.00. The building was used as the Farm Bureau office. Farm Bureau gave a gift to all Farm Bureau members who paid their 1937 dues before the last day of December 1936. The Farm Bureau allowed up to \$15 to help pay Mr. James Reid's expenses to the 4-H Club Congress in Chicago.

The Farm Bureau moved to 603 Mulberry Street, Rockford, IL and later purchased a second house next door at 609 Mulberry Street, Rockford, IL.

1937

Mr. Jepson resigned as of May 1st. Mr. Donald McAllister as hired as the 4-H Club Leader and County Organization Director. Members of the Grasshopper Committee included Frisbie, Neely, and Froehlich. Mr. Keltner resigned on July 29, 1937. Mr. H. Brunnenmeyer was hired as Farm Advisor in Winnebago County. A committee was appointed to organize an open house for the Farm Bureau and a reception for the Farm Advisor. The secretary was authorized to employ a janitor for the Farm Bureau building. The name of Winnebago County Farm Bureau's bulletin changed from Winnebago County Farmer to the Winnebago County Farm Bureau News.

1938

The Farm Bureau purchased awards for the wood chopping contest winners. Mr. McAllister reported on the 4-H Club's plans for the Field Day and 4-H Club Show. The Farm Bureau Board of Directors changed in number from nine to sixteen – one for each township. The directors approved the handling of Prairie Farms butter by the Midwest Dairymen's Co.

1939

Mr. J. C. Miller was appointed temporary Organization Director. Mrs. E.V. Stadel was hired as 4-H Club Leader in the county. Winnebago Producers Supplies formed and Harvey Hamer was the first President. Winnebago County Farm Bureau purchased \$5,000 of Class A Preferred Stock in the Winnebago Producers Supplies.

1940

Mr. Harvey Hamer made a brief report for the Rural Electrification Committee.

1941

Winnebago Service Company were authorized distributors for Blue Seal Feeds.

1942

The matter of draft deferments was presented. Many inquiries were made to the Farm Advisor.

1943

The Camp Grant garbage disposal was discussed. Mr. M.C. Weber began as Agency Manager.

1944

The Board approved the Winnebago Service Company's handling of fertilizers.

1945

A soil testing laboratory and the hiring of a technician was approved.

1946

Decision was made to vacate the second house and move some offices from the corner house to the other house on Mulberry Street. The meeting room was divided, and office space built for the Winnebago Service Company. Mr. Louis Bogner was hired as County Organization Director. Joint Memberships were discontinued. Only one name to a membership contract. The Farm Bureau Board of Directors approved Producers Supplies as a distributing agency for the Producers Hybrid Seed Corn.

1947

Ed Dalhaus was hired as Director of 4-H Club activities. Board of Directors W. Frank Reid, E.C. Phelps and T.E. Derwent were authorized to complete the transaction necessary for the purchase of the Orr farm on State Street and put the present Farm Bureau property on Mulberry Street up for sale.

1948

Mr. Louis Bogner resigned as County Organization Director. Plans for the new Farm Bureau building were drawn up.

Gordon Fox was hired as the Assistant Farm Advisor and Organization Director on Feb. 3rd.

1949

Winnebago County Farm Bureau and the Winn-Boone Livestock Marketing Association went together and leased two acres of land for their building.



In 1949, Winnebago County Farm Bureau built the Farm Bureau office located at 4329 W. State Street in Rockford, IL. The office phone number was 962-0653. This building was destroyed by a fire in 1994.

The first rafters went up on the Farm Bureau building located on West State Street in Rockford in 1949.

Winnebago County Farm Bureau office located at 4329 W. State Street in Rockford taken in 1961.

The sign for Agro Feed and Seed and a few smoldering ashes are all that remained of the old Farm Bureau Building located on West State Street in Rockford. The building was consumed by fire on the evening of December 27, 1994.



I WINNEBAGO HISTORY

1950

Farm Bureau contracted with Blue Cross under the Farm Bureau Group Hospitalization Plan. Mr. H. Brunnemeyer resigned. Myron G. Smith was hired as the Farm Advisor.

1951

Commercial grain cleaning to remove weed seed from locally grown seed was a major step for the Winnebago Service Company. Farm workers were included in the social security program with a 1.5% on all wages. Pasture improvement and conservation loans were major Soil Conservation Service (SCS) programs. A shortage of farm labor was evident so displaced persons from the World War II aftermath were recruited for labor in the U.S. Liquid Nitrogen was just coming into style, but it was not available in northern Illinois because of transportation concerns. It cost 35 cents a bushel to raise corn that produced a 50 bushel per acre average and sold for \$1.60 per bushel. The Illinois General Assembly passed a 5 cent per gallon road tax on gasoline with proceeds reverting to townships for road use.

1952

Pit Silos were coming into their own. Extension's recommendation for filling: 15 inches of grass silage, topped with 15 inches of corn silage; alternated until full; water down and cover with one foot of dirt. It was discovered that one foot of dirt was too much. Truck License costs increased, F Class went to \$106 and Class G went \$159. Spittle bugs were the pest of the year and anthrax struck in some areas. The first permanent 4-H buildings were erected on the Farm Bureau Fairgrounds at a cost of \$3700. All labor was donated with the exception of two full time carpenter supervisors. Money used was initially raised for a new Farm Bureau building but not enough was pledged. All contributors were contacted for approval to divert funds to the 4-H buildings. One hundred twenty businessmen toured thirty selected Winnebago County farms. Following the approval for additional associate members, the first major attempt to correctly classify Farm Bureau members was made. Insurance sales increased to the point a second Insurance Secretary is added to the

payroll. A second Farm Bureau phone line was added. The new number, 2-0653, is still being used today. Detailed soil maps became available at Soil Conservation Service (SCS).

1953

Silage carts from Shortline Supplies and feed supplements from Winnebago Service Company were major labor-saving devices. A new modified live hog cholera vaccine was introduced. Poultry needs, equipment and supplies for farmers were still major new items. SCS held its first air tour of Winnebago County. Winnebago Service Company built a new bulk warehouse for rock phosphate at its Pierpont Avenue site. The Winnebago County 4-H Fair was held in August rather than September. Red Blanchard, Phyllis Brown and the Swiss Yodelers were the entertainment. Over 18,500 people attended and those arriving after 5:00 PM were charged 25 cents to park. The money collected was used to pay for new bleachers. Country Life Insurance Company celebrated its 25th Anniversary, Illinois Farm Bureau was 200,000 members strong and Winnebago County Farm Bureau was 2000 members strong.

1954

Winnebago Service Company celebrated twenty-five years of service to Winnebago County Farmers. Don Swanlund was hired as youth advisor and eventually moved into Service Company operations. Winnebago County Farm Bureau held its 34th Annual meeting with Dr. Nicholas Nyardi, Minister of Finance of Hungary, as the featured speaker. The 4-H Fair was extended to three days to allow adequate time for all judging. Farm loans could be secured for 4%. The second Farm and Home Building Show was held at the Farm Bureau building. Illinois Farm Supply sold debentures in Winnebago County in the amount of \$42,200 for a new feed meal in Springfield. These notes paid 4.75% interest.

Badger Pipeline began negotiations to purchase right of way (ROW) for a pipeline across Winnebago County. The initial offer was \$1.00 per rod until Farm Bureau entered the scene and the offer was raised to \$2.00 per rod. A river conservation district was defeated in Winnebago County. Producers Seed Company introduced the "326" variety 95-day seed corn for

northern Illinois. A statewide dairy promotion was carried out by Illinois Farm Bureau and Winnebago County was the runner-up in the contest between counties. Sweet Clover was promoted as a between row crop in corn fields to act as a nitrogen supplement and to reduce soil erosion runoff. Service Company introduced Illini Motor Oil and Country Companies started selling polio Insurance. Picker Shellers became popular. The Illinois Senate was reapportioned for the first time since 1901 after being promoted by Farm Bureau. A 4-H show building program was launched for two new buildings. Corn drives, bake sales, etc., raised \$9100.



1955

The Farm Bureau Board named Dick Kerr as County Farm Advisor. Dick replaced Myron Smith. Three new 4-H Show Barns were constructed on the Farm Bureau Show Grounds. The one million ton of Blue Seal Feed was produced by Illinois Farm Supply. Winnebago County Farm Bureau remodeled the Farm Bureau building at 4329 West State Street. The original estimate was \$1800, but additions to the plan raised the cost to \$16,000. An open house was held to show off the improvements. Illinois Farm Supply changed its logo from Blue Seal to the current "FS". Robert Iberg was named Manager of Winnebago Service Company. Winnebago County Farm Bureau promoted meat consumption at in store promotions. The first Farm Bureau Women's Committee was formed. Members were Mrs. Ed Truman, Mrs. Ray Pollard, Mrs. James Reid, Mrs. Wilford Rittmeyer and Mrs. Rex Light who was named chair. The Women's Committee, in co-operation with the



Marketing and Promotion Committee (Ellis Greene Chair) generated thousands of product sales with promotions in stores and restaurants over the coming years.

Newspaper Article/Photo: 41 FB Women's Activities Committee 12.1955

1956

The first statewide Farm Bureau Bowling tournament was held. Counties held local tournaments for entries in the State Sports Festival. Winnebago Service Company built a bulk blend fertilizer plant at its Pierpont Avenue facility. Farm Bureau and Extension were separated by edict of the US Department of Agriculture. A new Extension Council under supervision of the University of Illinois was given control of the local extension program. Farm Bureau continued to fund the local extension program, but funds had to be sent to U of I for distribution. A market development and promotion program was instituted. A member to member fund drive was launched and \$1840 is raised in two days. Farm Bureau and the Rockford Chamber of Commerce held an Ag-Industry Chicken Bar-B-Q Dinner at the Farm Bureau. Over 400 attended the Bar-B-Q. Harold Allen was named Winnebago Service Company Sales Manager and Everett Phelps was named to the Illinois Farm Supply Board of Directors. The first Estate Planning Program for farmers was held. Winnebago County Farm Bureau sold the property at 4311 West State Street to Midwest Dairyman's Company.

1957

Meat promotion programs in Winnebago County spent \$360 while \$100 went to milk promotion. A statewide egg promotion program was started. Producers Supplies closed its door and Winnebago Service Company was authorized to handle and sell producers seeds.

1958

A contract for heating and air conditioning the upstairs and downstairs in the Farm Bureau building was signed. Meat promotion signs were posted on county highways from funds derived from AG promotion drives. With the closure of Producers Supplies, Farm Bureau was authorized to sell animal health products. The first FFA/Farm Bureau acquaintance program was held. The Wool Marketing Association ended its operations due to lack of co-operators. Parking at the 4-H show increased from 25 cents to 40 cents. The Winnebago Dairy Princess Program was made a part of the Farm Bureau dairy promotion. A 50-cent tip to restaurant waitresses for promoting "milk at meals" was started. The Illinois Farm Bureau narrowed its new building site to ten cities. Rockford was in the running but lost out to Bloomington. The Farm Bureau Bulletin went from glossy paper to newsprint as a cost cutter. Winnebago Service Company added credit options in co-operation with Production Credit Services.



1959

Winn-Boone Livestock Association merged with Illinois Livestock Marketing Association. Winnebago Service Company introduced 'D' Patronage Stock for its patrons. The 4-H show board voted for

a permanent food building on the fair grounds at a cost of \$3,000. Winnebago County Farm Bureau declared a 25% cash dividend on serum sales. A new Illinois Egg Law stated all eggs must be graded and labeled prior to sales. Several small egg producers closed shop. The first Farmers to Springfield for legislative purposes was started. Farm Bureau women started a safety program with a clear corners project to make rural driving safer. A red flag on a ten-foot pole was required on all farm implements traveling under 20 MPH on roads. A statewide conference was added to the FFA/Farm Bureau Acquaintance Program. The county 4-H champion steer brought 93 cents per pound setting a new record price. The owner was M. Espenschied and the purchaser was the Faust Hotel. The average price for livestock at the 4-H sales was 29 cents per pound. Winnebago Service Company started a bulk feed delivery program.

1960

Associate Farm Bureau members' dues raised from \$20 to \$25. The new IAA building was started in Bloomington, IL. The women's committee continued their safety program by making the new red flags for farm equipment available at the Farm Bureau. The first lamb pool was held, producers received \$23 per hundred.



1961

Martin Doty was elected President of Winnebago County Farm Bureau. Ed Dalhaus, former youth advisor in Winnebago County, now Illinois Farm Bureau Director of Young People Activities was the keynote speaker at the Winnebago County Farm Bureau Annual Meeting. A tasty box lunch was served. The Farm Bureau paid a 20% cash dividend on purchases of serums and biologics. Agricultural Stabilization and Conservation Service (ASCS) moved from offices in the post office building to space at Auburn and Central. David Johns

| WINNEBAGO HISTORY

became the Winnebago County Soil Test Lab Technician. Country Life Insurance introduces medical catastrophe insurance coverage. Winnebago Service Company introduced aluminum coated fencing. A 1959 Herbicide Spray Ban went into effect with penalties. Country Mutual decreased collision insurance premiums by 16.9%. The 4-H Show Board built a new Home Ec Building on the show grounds at a cost of \$5000. All exhibition sheep were required to be dipped within 90 days of showing to control scabies. An open house was held for the Farm Bureau building in Bloomington, IL. Owen Blue Bonnets' Girls 4-H Softball Team goes to the state softball finals for the second year in a row. The County Farm Advisor moved out of the Farm Bureau office space into a separate space with his own phone and secretary making a complete separation between Extension and Farm Bureau.



1962

Ellis Greene was elected President of Winnebago County Farm Bureau. Soil testing service was transferred to NU AG Services in Rochelle, IL, because of minimum wage laws and the volume of test would not guarantee the minimum. Cost at NU AG was fifty cents per sample. Winnebago Farm Bureau Co-op (a wholly owned affiliate of Winnebago County Farm Bureau) was formed for the sale of animal health products in Winnebago County. Winnebago County Farm Bureau Women's Committee won a national award from Shell Oil and The National Safety Council for their 1960 Safety campaign. Country

Life Insurance reached the 1-billion-dollar goal for life in force. Six livestock marketing associations merged forming Illinois Producers Livestock Association. Durand FFA Chapter won the State Farm Bureau sponsored Co-operative Activities Program. The Pecatonica Chapter was second. Producers Seed completed 25 years of service in the seed business. Guilford Girls won the "Share the Fun" contest. There were 122 reported cases of Hog Cholera in Illinois, one in Winnebago county (the first in three years). Illinois Farm Supply and Farm Bureau Service Company of Iowa merged to form a two-state supply co-operative called FS Services, Inc. Robert Iberg left Winnebago Service Company and moved to Will County Service Company as manager. JJ Lurkins became the new Winnebago Manager.

1963

Winnebago County Farm Bureau started a group life insurance program for members. The plan failed because of lack of numbers. New agricultural promotion signs went up on major highways in the county. The 4-H dairy cattle show was held in the Farm Bureau auditorium where it was out of the weather. The country dairy promotion used the state Dairy Princess and Pacemaker food stores to promote sour cream. A new state law allowed county government to finance Extension Service programs in conjunction with state and federal funds. A Farm bureau travel service was added at the state level. Farm Bureau efforts on soybean freight rates was successful in reducing rates. Pee Wee King and Red Stewart were featured acts at the 4-H show. A new flagpole was erected at the Farm Bureau. A new Hog Cholera tissue culture vaccine was introduced.

1964

All Farm Bureau member dues went to \$25. Winnebago Service Company was designated as the co-operative grain agency by Winnebago County Farm Bureau. The Service Company and Farm Bureau held joint daytime Annual Meetings. Farm Bureau sponsored and held the statewide Youth Power program in Rockford which promoted better eating habits. Minimum tillage was seriously discussed and practiced in Winnebago County. Winnebago County Farm Bureau supported a yes vote

on the County Courthouse Building Bond Referendum. The Referendum failed. Country Companies paid a 39% dividend on crop hail insurance premiums. Winnebago Service Company added LP gas to its product line. LP gas prices immediately declined. Ken Slocum, Assistant Farm Advisor, passed away after a one-and-a-half-year illness. A memorial fund was established. Mac Barlass assumed the position of Assistant Farm Advisor. A "Make it With Wool" contest was started to promote wool use. A co-operative venture between Winnebago FS and Farm Bureau Co-op made animal health products available at the Durand Feed Mill. Country Mutual expanded its Farm Home Insurance Plan. JJ Lurkins left Winnebago Service Co. and Harold Allen was named the new manager. August storms, wind and hail created 8000 claims in Northern Illinois. Winnebago Farm Bureau started a weekly radio program. Zeke Giorgi took office in the Illinois Legislature following the "Bed Sheet At Large Election". Farm Bureau marketing, financial and legislative programs were given strength and became more active. The book "Farm Bureau in Illinois" by John Lacy became available. A free bail bond service underwritten by Country Companies was introduced. The four cent Federal gas tax refund for agricultural use became a deduction on Federal Tax Forms. The Young Farmer Program in Winnebago County was rejuvenated.

1966

Illinois Producers Livestock Association changed its name to Interstate Producers Livestock Association and provided services in multiple states. The Extension Service terminated its lease in the Farm Bureau building and moved to 4311 West State Street. Ellis Greene was the first Winnebago member to participate in the Farmer to Washington Program. The Illinois Farm Bureau celebrated 50 years. Winnebago Farm Bureau Young Farmer Committee consisting of the following members: Mr. and Mrs. Dennis Freedlund, Mr. and Mrs. Jerry Johnson, Mr. and Mrs. Roland Boyer, Mr. and Mrs. Dave Stahl, Mr. and Mrs. Weyburn Kelsey, Mr. and Mrs. Roger Larson and Mr. and Mrs. Don Miller became active again. Don Miller was



elected chairman of the Young Farmers Committee. The IPLA hog buying station closed. The Winn-Boone Livestock Association property was purchased jointly by Winnebago Farm Bureau and Midwest Dairymen's Association. Winnebago County Farm Bureau Women's Bowling Team took second place in the State Bowling Finals. Country Mutual offered commercial insurance for the first time and went into security sales. Winnebago County Farm Bureau's Women's Committee sponsored a safe driver improvement program and introduced the Slow-Moving Vehicle (SMV) Emblem for farm equipment. The Women held a two-day chocolate milk sale promotion, sold "food is a good buy" aprons for \$1 each and distributed the "Guide to Good Citizenship" to local schools. Country Life reached 1.5 billion in force.

1967

ABSCO Bookkeeping and Management Services was approved as a member service for Winnebago County Farm Bureau Members. Durand FFA was again the top winner in co-operative activities. Country Mutual lost \$2.5 million in tornado damage in one day on Friday, April 21. Clare Clover participated in the Farmer to Washington Program. RFD Illinois, a Farm Bureau program, aired on WROK Radio in Rockford. The Young Farmers Committee held their first county Discussion Meet. Dennis Freedlund and Dave Stahl went to the district competition. Stahl moved up to State Finals. Gordon Fox moved to Field Services and Del Tedrick was hired as Executive Secretary of Winnebago County Farm Bureau.



1968

Farm Bureau again offered the Group Life Program in Winnebago County. The program was successful in 30 days through the use of a flying wedge sales force and local members. Sparks began to fly on a Constitutional Convention for the State of Illinois. The Women's Committee received a Dairy Promotion Award and introduced the June Dairy Baby Program. Judi Ford, Miss Illinois (and future Miss USA) attended the county 4-H show and performed on the trampoline. The "Make It with Wool" program was featured on TV. A Conservation Education Committee was created to implement a new state law mandating conservation education to be taught in all subjects in public schools. In co-operation with the Chamber of Commerce, the Checkmate program was created to help eliminate crime. Farm employees were covered under Social Security at 4.4% on \$6600. Farm youth under sixteen years of age were prohibited from operating farm machinery without proper training. Food lockers were no longer allowed to process farm slaughtered animals.

1969

Ellis Greene retired from the Farm Bureau Board. Floyd Dickinson was elected president. Matt Weber retired as Winnebago County Country Companies Agency Manager. Charles Jones was hired as his replacement. Policy development participation increased slightly due to a mail in questionnaire type program. The Young Farmers used "Mr. Farm Bureau" as an exhibit at the 4-H fair. Nonpartisan candidates for the Constitutional Convention were endorsed by Farm Bureau. Winnebago County Farm Bureau

started planning for their 50th Anniversary Celebration. President Floyd and Manager Del and spouses attended the AFBF 50th Celebration in Washington DC. Country Mutual adopted a rate classification by territory for Auto Insurance. Imitation fluid milk was introduced. Farm Bureau sought proper labeling to avoid confusion. Country Life offered Comprehensive Health Insurance. An outdoor education program was offered to schools through Winnebago County Farm Bureau. The Women's Committee sold United States Flags and poles. Mac Barlass, Asst. Farm Advisor moved to Lee County. Tom Lashmett was named to fill the position. Farm Bureau investigated a possible grape boycott conspiracy. The slow-moving vehicle emblem was officially recognized. Governor Ogilvie signed the personal property tax law of individuals, which was long sought for by Farm Bureau.



1970

A Constitutional Convention started in Illinois for the sixth time. Updates were placed regularly in the Winnebago County Farm Bureau News.

Matt Weber was named General Chairman for the Farm Bureau's 50th Anniversary Celebration. Ellis Greene delivered wood from eight large oak trees to cook the 1000 pounds of beef for the celebration. Charles Schuman, President of AFBF was the speaker. Thirty-six of the original 900 charter members from 1920 were still living. Twenty of these were part of the

| WINNEBAGO HISTORY



2000 members and guests in attendance. Charter members were given free life-time memberships.

Women's Committee started promoting yogurt as part of their dairy promotion. Southern corn leaf blight hit Illinois and Winnebago County. Farm Bureau Young Farmers held their first Farm City Day with the Jaycees which included a farm tour and picnic at Seward Forest Preserve. The Farm Bureau and FFA acquaintance program was a tag-a-long program with Service Company and Country Companies. The Constitutional Convention referendum was set for December 15. Farm Bureau endorsed the finished product. Country Life reached \$2 billion in force. An experimental Farmer to Farmer Program was held and fresh Florida citrus was sold in Winnebago County for \$5.00 per case. The Program was successful.

1971

Farm Bureau filed a suit in Federal Court protesting the personal property tax on Farmers. The tax was eliminated. Charles Shuman resigned as AFBF President. William Khufuss, Illinois Farm Bureau President was elected as his replacement. Harold Steele was named President of Illinois Farm Bureau. Winnebago Country Companies Agency added more phone lines. Country Mutual paid a 15% Crop



Hail Dividend. IPLA introduced an in-lot fat cattle selling program in Winnebago County. Illinois introduced the Farm Truck License which allowed farmers to purchase truck plates at 40% less than commercial plates. No Fault Insurance was instituted. The Women's Committee introduced the "Think" Safety Sticker. The SMV emblem was mandated nationwide as the safety emblem for vehicles of animal husbandry.

1972

A mink style show was the entertainment for the Farm Bureau/Service Company annual meeting. Office staff and President Dickinson modeled everything from floor length milk and sable coats to a mink bikini. Farm Bureau sponsored truck regulations that went into effect in Illinois. Delegates from five New England States visited Winnebago County Farm Bureau for help in improving their County Farm Bureaus. Director candidate background for Service Company and Farm Bureau Boards was put into Farm Bureau News so members could make a choice. First farm truck plates went on sale. Sunflower grower contracts were written in Winnebago County. Sunflower seed went to Germany for oil extraction. Young Farmers in cooperation with Rockford Park District, planned demonstration plots at Rockford Children's Farm emphasizing different farming practices. Tom Lashmett left Winnebago Extension and went to Morgan County. DDT was banned. Farm Bureau started a nationwide hay exchange. Edith Mammen, Farm Bureau Secretary for 19.5 years resigned and moved to California.

1973

Kerwood and Pat Watts were District winners in the State Young Farmers Award Program. Rich Erickson was the District Discussion Meet winner. The Farm Bureau Board of Directors adopted a resolution to be presented to the Membership for permission to sell the Farm Bureau building and State Street frontage; increase the dues to \$36; and build a new Farm Bureau building. Chicago Girl Scouts, Boy Scouts and Japanese Livestock Men visit Winnebago County Farms through arrangements made by Farm Bureau. IPLA opened Winnebago County up to the Telephone Auction Market for feeder pigs. Farm Bureau Board member attendance was placed in the Farm Bureau News. The Women's Committee held a five-year birthday party for the June Dairy Babies; sponsored a cottage cheese recipe contest and held a Women's Self Defense Seminar. Phil Baylor was named New Assistant Farm Advisor. National Guard helicopters were used to haul hay to flood stranded cattle due to early spring thaws.



1974

The Winnebago County Farm Bureau co-operative was dissolved. The co-operative was formed in 1962 to eradicate Hog Cholera, it had achieved its goal. The remaining co-operative assets were given to Farm Bureau.

The Farm Bureau membership approved selling all State Street property; raise the dues to \$36; purchasing property from Winnebago Service Company at 1925 South Meridian Road; and to borrow the

necessary funds to build a new Farm Bureau Office Building.

The first market line was installed to allow farmers to get market information at any time of day. Floyd Dickinson retired from the Board and Bob Winters was elected President. Winnebago Service Company purchased a "floater" for spreading fertilizer. New toll road informational meetings were held for owners and operators in the effected corridor. The Women's Committee held its first Farm Women of the Year contest. Sally Patrick was the winner. Extension news reappeared in Winnebago County Farm Bureau Newspaper. Chicago students and Senior Citizens visited Winnebago County farms. A Soybean marketing checkoff referendum passed for soy promotion. The Service Company moved its petroleum operation to the Meridian Road site. Winnebago County Service Company was named in the top 25 management list under Harold Allen's management. Richard Carlson was the District Discussion Meet winner and runner up at state meet. Women's Committee donated a film "What's a Cop?" to Rockford Police Department for training purposes. Farm Bureau sponsored an explorer scout troop called Ag-Scouts. The Service Company introduced 'E' stock. Charles Jones resigned as County Companies Agency Manager. He was replaced by J. Allen Stevens. The 1974 4-H Show was the last one held at the West State Street site.

1975

The West State Street property was sold to Rockford Bible Assembly. Harold Steele was the speaker at our annual meeting. (This was the first time an Illinois Farm Bureau President was the speaker at the Winnebago Annual Meeting.) Candy Bridgeland was the 4-H soybean extra yield contest winner. Candy was the first girl to ever win the honor. The 4-H show moved to Pecatonica and became a part of the County Fair. A new updated phone system and numbers were installed for the Service Company. New building plans and a loan from St. Louis Bank of co-ops were secured and construction on a new building began. The move in date was scheduled for late August, however, the actual move was made over Labor Day.

The Farm Bureau \$500 Reward Protection



Program was started. Operation Identification Program was started in Winnebago County. New international road signs began appearing. Country Companies introduced a school bus safety program and agent of the month began to appear in the Farm Bureau News. Farm visit days were expanded to include everyone. Pork Producers, Porkettes, Livestock Feeders, Midwest Dairymen, 4-H Extension and Young Farmers all co-operated in the program. Farm Bureau calendars were no longer mailed to members. Calendars must be picked up at the office. Farm Bureau became a regular exhibitor at the Winnebago County Fair in Pecatonica.



1976

A phone in Market Advisory Service was offered to Winnebago County Members through the commodities department of Illinois Farm Bureau.

Winnebago County Farm Bureau members met with President Ford at Henrici's with over 600 in attendance. The meeting makes the National Network News. Farm Bureau pushed for Federal Estate Tax changes and were partially successful. In an attempt to boost attendance for the Farm Visit Day, a steak and pork chop

news conference was held at the new Farm Bureau building. Food awareness commercials were started on Wally Phillips' WGN Radio Show in Chicago. County Farm Bureaus shared in the cost.

Winnebago Service Company sold the Pierpont Avenue property and moved all operations to Meridian Road. Winnebago Service Company held an Anhydrous Ammonia Safety Seminar for Fire Department personal in Winnebago County. Corn Rootworms hit especially hard in the county.

The first frozen fruit sales program was held in Winnebago County. Board meeting highlights appeared in the Farm Bureau newspaper.

The Young Farmer Committee held a Ten-Year Reunion for all past members and sponsored a dual float in the Rockford Fourth of July Parade, "3 to 300 horsepower". Dave Winters and Rich Carlson were winners in the District Discussion Meet.

Country Companies updated and improved Farm Owner Insurance. Doug Swinson joined Country Companies sales force creating the first father-son combination in the company.

1977

The Farm Bureau and Service Company's annual meeting was moved to an evening dinner meeting with a dance to follow. Women's Committee sponsored a Marketing Seminar for women and the Young Farmers held a Land Use and Tax Seminar. Both were well attended. Dual assessments were used to assess farmland for taxes, but it had to be applied for. Farm Bureau changed the bylaws to elect directors by district, not township and reduced the board size to 15. Service Company adopted the same districts. Bob Winters stepped down as President and Steve Shade was elected to the position. The Women's Committee sponsored a Powder Puff Mechanic course and hosted Iowa Women on a visit to Winnebago County. They sold smoke and fire detectors. Phil Schiedenhelm was named manager of Winnebago Service Company and a customized beef feeding program was introduced. The loan on the Farm Bureau building was paid off. Dave Winters was runner-up in the State Young Farmer Discussion Meet at the IAA Annual Meeting in St Louis.

I WINNEBAGO HISTORY

1978

The previous years' county annual meeting minutes were printed in the Farm Bureau News to allow members the chance to read them prior to the annual meeting. Al Stevens was promoted to District Director of Sales and Ken Settimi was named Country Companies Agency Manager in Winnebago County. Farmland was assessed on productivity levels rather than sale price. The County Marketing Committee sponsored an Agrivisor Seminar and Young Farmers held "Operation Food Basket". They purchased food items in grocery carts to show the actual cost of food. The Young Farmers also promoted Fire Extinguishers sales. The Women's Committee brought in a Mobile Health Test Van. Ag Day was celebrated downtown on the mall due to efforts of Pat Stahl, Women's Committee Chair. Farm City Family Exchange moved Chicago people to a weekend on the farm in Winnebago County. The Illinois Commerce Commission (ICC) held public hearings on right of way (ROW) for transmission lines from Byron Nuclear Plant to the Wempletown Sub Station.

1979

The Extension Center at 4311 West State Street held a Mortgage Burning Ceremony. The center was debt free. AG day was moved inside North Town Mall. Young Farmers gave free ice cream cones to those who answered a simple questionnaire correctly. Country Life completed 50 years of service to Farm Bureau members. Alcohol fuels were talked about due to fuel shortages and 208 water quality standards were discussed at public hearings. The Young Farmers conducted a Pesticide Can Collection-Crushing Program and used a can crusher purchased by Winnebago Service Company. They charged 10 cents per can the first year. Women's Committee distributed farm coloring books to Rockford schools. Farm Bureau remodeled the west wing auditorium space for Production Credit and Federal Land Bank use. Country Companies Claims moved into the Land Bank space. Great America discount tickets were available to Farm Bureau members. The Lexington FS Research Farm was 25 years old. Winnebago County year 2000



plan was presented at hearings for citizen input. Farmer Grade Alcohol produced by farmers for farming use was promoted.

1980

Hazel Ralston, a member of Winnebago County Farm Bureau Women's Committee, was appointed to the Statewide Women's Committee representing five counties in IAA District 2. Farm Bureau urged a yes vote on the beef promotion checkoff referendum. It failed to pass. Soybean germination tests were offered free of charge through arrangements between Illinois Department of Agriculture and Farm Bureau. Food costs around the world were compared. U.S. food was still the most affordable. Solar heat, alcohol fuels and farmer stills were promoted because of fuel shortages. President Carter imposed an embargo on grain sales to the Soviet Union. Virgil Dietmeier resigned as President of Winnebago Service Company. Kerwood Watts was elected President. Young Farmers promoted and participated in a CPR class held at the Farm Bureau. Farm Bureau offered free portraits to its members in commemoration of the 60th Anniversary of Winnebago County Farm Bureau. Ag Days in North Towne Mall added live farm animals and displays inside. Country Companies office was computer linked with offices in Bloomington. Farm Bureau Women's Committee celebrated 25 years of activity. Carol Pollard was recognized as one of the first Women's Committee members still serving. The Women's Committee started distributing Ag chemical safety brochures to each farm family in Winnebago County. A farmstead of the year was tried without success. Agrivisor Marketing Radios were now available in Winnebago County. Soil

Survey books and Maps for Winnebago and Boone Counties were available for distribution. Winnebago Service Company celebrated 50 years in Winnebago County. An Ag Areas Conservation and Protection Law was passed by the State Legislature. Winnebago board approved the plan in Winnebago County. The policy development program was carried out by volunteers on the telephone over several evenings. The Winnebago County 4-H Co-ed Softball Team was the statewide champion in the sports contest. The Cherry Valley landfill was first discussed. The Women's Committee distributed Consumer Ed folders to schools in the county and received an award from the State Farm Bureau on the program.

1981

Ralph Frantz was elected President of Winnebago County Farm Bureau. Rock Valley College offered a night course on Stills and Alcohol Fuels Production for Farmer Grade Alcohol. The women promoted and distributed Tot Finder Fire Rescue decals for bedroom windows. They held a Blood Pressure Screening program at the County Annual Meeting. Jack Block was named Secretary of Agriculture by President Reagan and lifted the Soviet Grain Embargo. The Young Farmers promoted and put up Gate Signs at almost every Farm Bureau member's farm in Winnebago County. County Boards were given Veto Rights on the location of County Landfills. Animal Rights Activist became more noticeable.

For the first time, an open enrollment was offered on the Centsible Life Insurance Program. All Farm Bureau members were eligible. Auto Rental Discount Cards were made available to Farm Bureau members. Marketline was moved to the Farm Bureau office with updates three times a day. Bob Phelps was named to the State Young Farmer Committee. Farm Bureau provided information on the Milwaukee Road Railroad ROW Abandonment and Rights of adjacent landowners. Dave Winters won the District Discussion Meet and was runner-up at the State Meet. Commodity groups were invited and shared the Farm Bureau booth space at the County Fair. Rockvale Balloon Rally thanked Farm Bureau and members for co-operation on landing space following lift off. The new FS Distribution Center at Alpha, Illinois

opened. The Viewpoint Program was held in the new Winnebago Service Company warehouse.



1982

Farm Bureau dues raised to \$40. Women promoted "What is a Hat" and fructose sweeteners. Winnebago Service Company committed to full page articles in each issue of Farm Bureau News. The first Farm Expo was held in Machesney Park Mall. Young Farmers developed a Used Oil Recycling Program. Country Companies Insurance approved and promoted satellite offices for insurance agents. Agrivisor Radio was offered on a one-week free trial. Phil Scheidernhelm left Winnebago Service and Kirk Biggs was named Manager. The Service Company changed its bylaws and ended the joint Annual Meetings. Women's Committee sponsored an EMT Training Program 250 people were certified on farm and equipment rescue procedures. They received no award for this training program. (In 1983, a southern county received a first-place award and commendations for the same program.) Young Farmers co-operated with SCS on a "Fall No Till" program; sponsored a land buying seminar and pulled a float in the Rockford 4th of July and Rockton Old Settlers Day parades. The Post Office assigned house numbers and street names for all residences and buildings in rural Winnebago County. RD and Box Number were no longer legal. Voter Registration was now available in the Farm Bureau office. President Frantz was elected to the IAA Board of Directors.

1983

Dennis Wilke was elected President of Winnebago County Farm Bureau. Women's

Committee sponsored bus trips to the Chicago Board of Trade and to Springfield. They held a seminar on Coping with Stress in Agriculture. Richard Kerr, County Farm Advisor, passed away. Ed Specht, Asst. Advisor, was named as his replacement. The Farm Expo moved to the Metro Center where Farm Bureau displayed information on computers and marketing services. Payment in kind (PIK) and Reduced Acreage Programs (RAP) were passed by US Dept. of Agriculture. Winnebago Service Company went retail on LP gas sales and made bulk chemicals available. President Wilke and State Young Farmer representative, Bob Phelps, are both named to the Tentative Resolutions Committee. The Illinois Grain Insurance Protection Law was implemented. The Young Farmers held a grain charting school. The first Child Restraint Law was passed. Bob Phelps was named State Young Farmer Committee Chairman.

1984

A new Dairy Promotion Checkoff Program was mandated by USDA. A Beef Promotion Checkoff was tried again. Bail Bond Cards were phased out when the "Promise to Appear" Ticketing Program was tried. Women's Committee invited all candidates for local and district offices to attend the Farm Bureau Annual Meeting as a Meet the Candidate Program. PCA and Federal Land Bank moved out of the west wing to their own building down the road. Winnebago County Board proposed a Special Use Tax District for police protection in rural Winnebago County. Farm Bureau opposed the program and was successful in its defeat. Country Companies opened the East Rock Agency with Bruce Nelson, Boone County Agency Manager as Manager. IBM computers were now offered through Farm Bureau. This was the last year of the Young Farmer Can Crush as the Service Company went to purchasing all bulk on chemicals. Service Company opened a full-service gas station at Durand and started the 'Winnebago Focus' Newsletter. An alcohol distillery was built at Pagel Pit to produce alcohol for gasohol fuel. Japanese farmers visited Don & Barb Greenlee's farm and were impressed with the Datsun pickup truck. "Farm Country, Stay Alert" signs went up in the county. Kerwood Watts retired from the Service Company Board and Ken Greenlee was elected President.

Hazel Ralston was named Chair of the State Farm Bureau Women's Committee.

1985

Quality certified hay was offered for sale at the Pec Sale Barn. Ed Specht and Brad Kufalk did the majority of the work. Business mileage logs were required on vehicles by the Internal Revenue Service. Farm Bureau and TV Channel 13 began regular Farm Bureau interviews on the Local News program at noon. Larry Swinson opened a new Country Companies office in Durand and Don Stephenson did the same in Rockton. The Service Company started contracting more petroleum retail outlets in the county. They also sponsored jointly with Women's Committee and Young Farmers a simulated chemical fire at the Meridian Road plant. Over 1000 gallons of water per minutes was pumped by local fire departments and sustained for several hours. Helicopter "Henry One" is called out for firemen going down in the intense heat. The Activator Program, "A Farm Bureau PAC", was started. Meridian was detoured for 60 days due to the replacement of the bridge over the railroad tracks north of the Farm Bureau building. Commonwealth Edison offered surveys to help farmers possibly decrease electric costs. Growmark and ADM merged and co-operatively marketed grain. Bob Phelps was named sales rep for Agrivisor Services in northwest Illinois. The Weiser Eye Care Discount Program was started.

1986

EPA started regulating underground storage tanks. Only Certified applicators were allowed to purchase and apply certain Ag chemicals. Friends of Agriculture were named through the Activator Program. Dennis Wilke retired from the Farm Bureau Board and Bob Phelps was named president. Winnebago County Farm Bureau helped coordinate a hay lift to Georgia and South Carolina. Over 4000 bales are airlifted to feed livestock during the drought. The 1985 Farm Bill was implemented, and a lot of discussion was held on the Conservation Reserve Program. John Gibson was named new manager of Winnebago Service Company. John replaced Kirk Biggs. Country Companies agency managers became employees of CC Services, not private contractors. A County

| WINNEBAGO HISTORY

Executive Position was discussed but the program did not pass. Federal Land Bank and Production Credit merged into Farm Credit Services. The Hunger Connection and Farm Bureau coordinated programs to help feed the needy. Board member family profiles were featured in the Farm Bureau News. Service Company made gas additives available to replace lead content outlawed by EPA. India sent several officials to Winnebago County to study our Agribusiness situation. Roger and JoAnn Ward hosted the visitors at War-Lock Dairy Farm. The first in-county Member Discount Program was started with several co-operators. Gary Shedd was a finalist in the State Young Farmer Discussion Meet. Farm Bureau spoke out and promoted alcohol enhanced fuels. Kenny Rogers & his crew were in Winnebago County making a special TV show. After several hours of filming, Arlene Williams appeared on National TV for 30 seconds. The first Dick Kerr Memorial Scholarship was awarded to Tracy McNames. Chapter 12 bankruptcy was made available to farmers.

1987

Illinois Corn Growers "E" Team visited Rockford to promote Gasohol. Farm Bureau voted to support off track betting in Rockford if the income went to the Ag Premium Fund. Farm Bureau supported the "Save Our Land" group and went on record supporting incineration as opposed to landfills. Farm Bureau adopted a resolution to participate in the Royalty Program with Country Companies. Royalty income would be received for use of the name "Farm Bureau". Dues for associate members were reduced to \$20. Country Companies offered Pollution Liability Insurance and purchased full page ads in the Farm Bureau News. The Bail Bond Program was reinstated at a cost of \$1.50 each. The Service Company planted a crop stress circle at the Meridian Road facility. Women's Committee provided a Self-Protection Seminar; and replaced Farm Women of the Year with Salute to Farm Women.

1988

Winnebago County became involved in Farm Bureau's CHIEF (Changing How Illinois Education is Financed) Program. Total county membership reached over

6000 members. The board adopted a reclassification form and procedure with the \$20-\$40 dues structure. Women's Committee sponsored a Farm Investment Seminar; offered Radon Detector Kits; sponsored a soy lunch; and provided milk and ice cream to many bible schools. EPA levied a registration fee on underground storage tanks. Moisture meter recalibration was offered free by IL Dept. of Ag at Dekalb. Hardees fast food chain converted to soy oil for cooking. Farm Credit Services moved back into the Farm Bureau building. The Heifer Tax was repealed; drought assistance workshops were held; on the road brochures for farmers were made available; and French Farmers visited the Pell Farm in Cherry Valley. The Marketing Committee started a Farm Labor Pool and the Young Farmers got involved with the Young at Heart Festival in Loves Park. A Meet the Candidate picnic was held at the Farm Bureau.

1989

Dean Kleckner, AFBF President, was scheduled to be the Annual Meeting speaker, however, he got snowed in in northern Minnesota and his Assistant filled in for him. Country Companies declared a Crop Hail Dividend and offered Multi-Peril Crop Insurance. Mandatory Auto Insurance became the law of the land. Country Companies agents' family profiles were featured in Farm Bureau News. An Options Seminar was held in co-operation with the Rural Banks of Winnebago County. Groundwater Pollution was on the front burner. Extension Service celebrated 75 years of service in Illinois. Women's Committee provided refreshments and brochures for tourists at Turtle Creek Rest Stop. Farm Dairy income declined; ATV registration was required; and WMAQ TV of Chicago visited Winnebago County to get a real picture of Agriculture. Farm Bureau started electronic reporting of membership to Bloomington.

1990

The Winnebago County Farm Bureau Foundation was formed to provide Ag Scholarships to members and dependent members, Winnebago and Boone Service Companies purchased Sandahl Farm Service at Cherry Valley and re-named

it Perryville FS. New Federal Truck regulations went into effect. Informational meetings were held in the county and lots of interpretations were presented. Young Farmers sponsored "Y" night for Farm Bureau Members. Sam's Wholesale Club courted Farm Bureau membership business and held an open house for them. Information on Living Wills was provided. Wetland conversion and definitions took a lot of time on hearings. The Hidden Name Game was started in the Farm Bureau News. Nearly 5000 (4921) tires are collected at the first Used Tire Collection and Recycle Program. Farm Bureau members started regular appearances on TV 23 in the morning. Dorie Zimmerman won the Soybean Bright Idea Contest and the women got a trip on the Lake Geneva Dinner Boat Cruise. President Phelps traveled to California to help defeat the Big Green Proposal.

1991

Neal Brandt was named joint Manager for both Winnebago and Boone County Service Companies. Later that year, the two companies consolidated and became Riverview FS. Co-operative Extension was restructured, and Winnebago County no longer had a Resident Farm Advisor. Food for Thought commercials were aired on several radio stations in Winnebago County. Recycle Centers were identified and promoted through the county. Women's Committee members "Adopt A Professional" for better understanding of Agriculture by city folks. Winnebago County ASCS and SCS moved to new offices on Owen Center Road. Farm Bureau offered a professional income tax service for members.

1992

AFBF President Dean Kleckner was guest speaker at our Annual Meeting. Del Tedrick retired after 29 ½ years as Manager of Winnebago County Farm Bureau. Roger Christin was hired as his replacement. President Bob Phelps was elected to the Illinois Farm Bureau Board of Directors representing District 2.

1993

Bob Phelps stepped down as President of Winnebago County Farm Bureau and Larry Larson was elected. Farm Bureau

Foundation presented the first three \$500 Scholarships to Brent Zimmerman, Darcy Klinger, and Mark Stahl. Earl Williams Jr. was named Farm Bureau Representative on the Winnebago County Pesticide Task Force. President Larson was named to the State Tentative Resolutions committee. Ron Warfield visited with the board to explore the possibility of running for President of IAA. The IAA elected Ron Warfield President and Rollie Moore Vice President for their first two-year terms. A ten-year term limit was placed on officers and board members of IAA. Mike Mitchell was appointed to the State Marketing Advisory Committee (SMAC) replacing Bob Ellis. Roger Christin achieved the Certified Farm Bureau Manager status. Winnebago County Farm Bureau News was replaced with a weekly page in the Northwest Farmer which went to voting members only. Winnebago Young Farmers were the 100th group in the county to Adopt-A-Road. The Prime Timers Program was organized jointly with Boone County Farm Bureau.

1994

Randy Adkins and Jeff Wishop were appointed to an Ethanol Task Force to promote Ethanol Enhanced Fuels. Ken Greene represented Winnebago County on the Marketers to Washington Program. President Larson appointed an Investment Committee.

The Winnebago County Farm Bureau Local Affairs Committee developed a RIGHT TO FARM POLICY. After Farm Bureau Board approval, it was sent it on to the County Board of Winnebago County. The County Board approved the resolution at their regular meeting on March 24.

The Farm Bureau Foundation awarded \$500 Scholarships to William Strathman and Liza Shepard. The board adopted the "Country View" as the official publication of Winnebago County Farm Bureau. Weekly publications to all members started in October. Prime Timers Committee consisted of 100 members in Winnebago County alone. An Ethanol resolution was adopted by the Farm Bureau Board and sent to the County Board. The County Board adopted the resolution on November 22. Randy Adkins was named Illinois Corn Growers President. The old Farm Bureau



building located at 4329 West State Street was destroyed by fire on Dec. 27. (Of the five homes Winnebago County Farm Bureau has inhabited in the last 75 years, the current one is the only one still in existence.)

1995

The Women's Committee held a buy one, get one free ice cream promotion at area ice cream parlors in honor of Father's Day. Women's Committee hosted an Agri-science workshop for teachers. The Young Farmers hosted a tractor roll-over safety demonstration.

Letters were sent to the Highway Commissioner and the County Board to encourage maintenance of the roads by keeping up with the mowing for safety, visibility, hidden hazards and deer control.

The Winnebago County Farm Bureau increased the yearly donation to Extension Service from \$14,000 to \$15,000.

Gail Pollard attended the Leaders' to Washington DC. Grainger was added the local member discount program.

1996

Young Farmers sponsored a CPR class. Boone County Farm Bureau Young Farmers challenged the Winnebago County Farm Bureau Young Farmers to a volleyball game. Women's Committee sponsored a Farm Safety Camp for 60 kids at the Memorial Baptist Church. Larry Larson and Mike Mitchell hosted dairy farm tours for an Australian group.

Roger Christin, Farm Bureau Manager, shared his time with Boone County Farm Bureau for two to three months until a new manager was hired in Boone County. A

new computer and laser printer were purchased.

FS partnered with the Young Farmers to host an oil recycling program. Stan Tobias was hired as the new manager of Riverview FS.

The Country Companies wing of the Farm Bureau building was remodeled. The new Ethanol plant in Lena was named the Adkins Energy Co-op in memory of Randy Adkins.

1997

Young Farmers hosted a tire recycling, oil collection day and an estate planning seminar. The Women's Committee held a safety lights program for members.

A resolution was submitted to IFB stating "Be it resolved that the Illinois Farm Bureau seek legislation to allow forest preserves to keep farmland it acquires as farmland and not be forced to convert it to non-cropping uses and sell the crop land acres it acquires back to the public for agricultural purposes only." Farm Bureau became a partner in the Sugar River Partnership Council.

1998

Winnebago County Farm Bureau was recognized at the American Farm Bureau Federation Annual Meeting, January 11-15, 1998, in Charlotte, NC for their magnetic light system for farm wagons. Manager Roger Christin, Joanne Binger, Charlie and Mindy Curttright, and Dorie and Chuck Zimmerman attended the meeting.

A donation of \$1000 was made to the new agriculture exhibit at the Science and Industry Museum in Chicago.



I WINNEBAGO HISTORY

1999

A toolshed meeting was held at the Roland Poppen farm. Bernie Walsh and Ed Greene attended the Farmers to Washington DC program.

2000

Farm Bureau started a 401K program for full time employees. Rock Valley College and Winnebago County Farm Bureau hosted a Careers in Agriculture program for Boone and Winnebago teachers. Colorful ethanol stickers were distributed to local gas stations to promote 10% Ethanol.

2001

Prime Timers held a program on old barns. Country Companies became Country Insurance and Financial Services. The Winnebago County Farm Bureau increased the yearly donation to Extension Service from \$15,000 to \$17,000. Thirty-seven teachers from Winnebago, Boone, and Ogle counties attended the first Summer Ag Institute. The Believers Bible Church donated the labor for the removal of the two side offices in the north wing meeting room area. Farm Bureau purchased a digital camera. Board discussed high cost of farm truck license fees, urban sprawl, river transportation, Ag First and the DNR with State Representative Chuck Jefferson. Used tire collection was held.

2002

Farm Bureau member, Bill Russ's invention of a bottom trap-door forage wagon was selected as one of the winning entries and was invited to showcase his invention at the American Farm Bureau Federation Convention in Reno, Nevada. The purpose of the program was to show "New Ideas" that farmers have built to use on their farms. Bill and his wife, Joyce attended the IAA annual meeting in St. Louis in December and used a miniature model to demonstrate how the wagon worked. He was the overall National Winner and was awarded the use of the New Holland Bidirectional Tractor for a year.

Gary Shedd attended the March Leaders to Washington DC program. Winnebago County Farm Bureau partnered with the Soil and Water Conservation District to sponsor a



water testing program for nitrates, chemicals and metals. Riverview FS and the Winnebago County Farm Bureau sponsored a Used Oil Recycling Drive. Mary Palmer participated in the August Marketer's to Washington DC trip. Congressman Manzullo was presented with the "Friend of Agriculture" award. Larry Larson was appointed chairman of the Livestock and Dairy GRITS Committee.

Farm Bureau member, Helen Paulson observed her 80th birthday high above the family farm by being hoisted up on the seat of an old Fordson tractor resting on a pole on the farm. One hundred Farm Bureau Prime Timers witnessed the event at their annual picnic. The Roscoe/Harlem Fire Department assisted the efforts by bringing their new fire truck.



2003

Two old barns in eastern Winnebago County connected together for nearly 100 years were separated and given a new lease on life at the Midway Village and Museum Center in Rockford. The older of the two barns is a rare example of a pre-civil war

barn and was estimated to have been constructed in the early 1850's. It was built of hand-sawn logs from local timber and was estimated to be the oldest barn to be restored in northern Illinois. The second and newest of the two barns was built on to the end of the old barn around 1905.

Winnebago County Board adopted a burning ordinance which affected the unincorporated areas in the county. Agriculture was one of the exemptions within the burning ordinance.

Congressman Don Manzullo, of the 16th District, representing Winnebago County was recognized by the American Farm Bureau Federation for his support of legislative issues of importance to farm families. He had a 100% voting record on 17 issues which included an appeal of the Death Tax.

The Board of Directors discussed Winnebago County's recent acts of rezoning many parcels against recommendations of the county Board of Appeals. Concerns were expressed over the proposed elimination of the Zoning Board of Appeals (ZBA) and suggested that the County Board should follow the ZBA recommendations more closely. In general, "our direction is not to oppose growth, but to concentrate growth in designated areas. While we respect anyone's right to sell to the highest bidder, we feel that development among farm fields interferes with a farmer's right to raise crops and livestock without interference from a large number of people without any farm connections." wrote Larry Larson, President.

2004

The Board adopted Rep. Elaine Nekritz from the Des Plaines area of Cook County, through the IAA's Adopt-a-Legislator program. The purpose was to help educate urban legislators about agriculture and the issues affecting farm families. Rep. Nekritz's first visit included a visit to the Walsh farm, Mitchell Dairy Farm of south Winnebago, Seward Ag Supply, and the Bill Sweet's swine nursery near Durand.

An informational meeting was held on water quality and ways to better control the soil erosion of the river and stream banks in Winnebago and the surrounding areas of northern Illinois. Farm Bureau switched local phone providers and added a DSL line to provide dedicated Internet access.

Local members participated in the Heritage Tractor Adventure. Roger Bates had his 1976 Case tractor painted a patriotic Red, White, and Blue from the factory. Harold Metz also joined with his 1939 Allis Chalmers WC. Their tractors joined a total of 350 tractors as they traveled from Joliet to Streator, Illinois.

Sixty-eight Farm Bureau Prime Timers from ten counties, traveled to Alaska for a two week visit to the "Last Frontier" state.



Winnebago members included Bill and Joyce Russ; Harold and Peggy Metz; MaryEllyn Kinney; Loreen Crowley and Roger Christin.

Congressman Don Manzullo; Illinois State Senators: Sen. Brad Burzynski, Sen. Dave Syverson, Sen. Todd Sieben; and State Representatives: Rep. Jim Sacia, Rep. Dave Winters, Rep. Chuck Jefferson and Rep. Ron Wait received the "Friend of Agriculture Award" the award.

Rep. Elaine Nekritz, a State Representative from the 57th District, rode a combine with Bernie Walsh; visited Demeters Grain Company in South Beloit, and DeLong's south of Winnebago in the fall.

2005

Jim Fraley, Livestock Programs Director of the Illinois Farm Bureau presented a program on the NAIS (National Animal Identification System). IAA President, Phillip Nelson spoke at the 85th Annual Meeting. Larry Larson stepped down as President. Earl Williams, Jr was elected as President. Students from Prairie Hill Elementary School and Rockford Christian visited A&M Farms where Jon Lang taught them about pig farming.

2006

Farm Bureau Board supported the Wight Partners, Int'l, LLC proposal to locate a 100-million-gallon ethanol plant on a site just west of the Farm Bureau building. Farm Bureau gave five motorists a free fill-up of E85 to promote Ethanol during National Ag Week. Channel 23 interviewed Director Mary Palmer at the Grand Prix Gas Station on the corner of Harlem and Forest Hills Rd. All three television stations were present for the promotion.

Rep. Jim Sacia, 85th District, presented a Centennial Farm sign to the McClure Family. The farm is owned by Farm Bureau members, Kathy and Craig "Moose" McClure.



Williams Tree Farm hosted a Farm Talk meeting with IAA President, Phillip Nelson. Updates were provided on key issues such as farmer profitability, farm policy, private property rights, immigration reform, national energy policy, transportation issues and efforts to expand Illinois' livestock industry.

Changes were made to the farmland assessment which impacted farm residence, farm buildings and farmland. Over 1000 individuals participated in the used tire collection drive which collected 31,719 tires over a two-day period. The drive was sponsored by IL EPA, Winnebago County Highway Department, Winnebago County Health Department, The Winnebago County Sheriff's Department and the Farm Bureau.

2007

Conserv FS presented a check for \$145.55 to the Winnebago County Farm Bureau as part of Growmark's Plant a Seed program where a portion of every bag of seed sold by FS went toward Ag in the Classroom

activities in the county where the seed was sold. General Motors replaced the Dodge discount program for members. Farm Bureau partnered with Joseph Behr & Sons, Inc. to offer Farm Bureau members an additional \$5 per ton on scrap metal.

Winnebago and Boone Farm Bureaus hosted a Local Government Conference. Topics included assessments, municipal reach and local zoning. Farm Bureau members, Roger and Judy Bates celebrated as their farm reached Sesquicentennial farm status. Pass with Caution signs for the back for farm wagons, trucks, and other farm machinery were made available free of charge.

2008

Twenty-three French vocational students visited Pecatonica School. These vocational students were studying dairy science, ag mechanics and agronomy. They also visited Wayne Gale's farm in Winnebago County and the Chicago Board of Trade, and the John Deere sites in Waterloo, IA and East Moline, IL. Earl Williams and Wayne Gale hosted a farm group from the British Isles.

Winnebago, Boone and Ogle County Farm Bureaus partnered with the IAA to host a Local Government Conference which addressed local government budgeting trends in local government and local road systems.

Gail Pollard was elected to serve as Vice Chair of the IFB Education ACTION Team. Brent Pollard was first runner up at the District 2 Discussion Meet.

2009

WCFB sponsored Annie's Project, an educational program designed to help farm women develop their management and decision-making skills through the University of Illinois Extension. Two Wind Farm Informational Meetings were attended by over 165 members from Winnebago, Stephenson and Ogle counties.

Manure Pit signs were available to all livestock producers in the area free of charge. Five Northwestern Illinois County Farm Bureaus (Winnebago, Stephenson, Jo Daviess, Ogle and Carroll) launched the "Livestock Country" radio campaign during drive times every other week through the summer. Topics included the positive

I WINNEBAGO-BOONE HISTORY

economic impact of livestock production, the family-farm nature of the industry and the reason for raising livestock indoors in the northern Illinois climate. Family farmers including Richard Beuth and Brent Pollard of Winnebago County were featured.

2010

Winnebago County Farm Bureau was recognized at the American Farm Bureau Federation Annual Meeting, January 10-13, 2010, in Seattle, WA for their Manure Pit warning signs.



Farm Bureau partnered with the Discovery Center Museum to promote "Buy a Bale" to help fund the new Ag-Zibit which opened June 26-27, 2010. Boone and Winnebago County Farm Bureaus were active in the development and financial support of the new exhibit.

2011

Farm Bureau hosted five French farmers at the Farm Bureau office as part of their day long tour of Winnebago County. Farm Bureau hosted delegates from Taiwan where they held a symbolic signing of trade agreement to purchase both corn and soybeans from the United States and Northern Illinois. Ken Greene, Durand and Earl Williams Jr, Cherry Valley signed Letters of Intent with the Taiwan Feed Industry for the purchase of a total of 7.7 to 10.5 million Metric Ton (equivalent to 303 to 413 million bushels) of corn and a total of 0.5 to .75 million Metric Ton of corn by-products. Purchases were expected to be worth between US \$2.47 to \$3.39 billion. The Letter of Intent with the Taiwan Vegetable Oil Manufacturers association was to purchase a total of 2.8 to 3 million Metric Ton (equivalent to 103 to 110 million bushels) of soybeans. Purchases were expected to be worth between US \$1.61 to \$1.73 billion in 2012 and 2013.

2012

Pat Koning, Winnebago County Farm Bureau Membership Secretary retired on July 6 after 26 years of service. Sandy Mitchell was promoted from part time Bookkeeper to Membership Administrator and Accounting. Tammy Wakeley was hired as an Administrative Assistant.

Young Leaders Paul Beuth, John Mitchell, Aaron Mitchell, Jen Wakeley and Holly Wakeley represented Winnebago County at the District 1 and 2 Discussion Meet. John Mitchell advanced to the State Discussion Meet at the IAA Annual Meeting.

Winnebago County Farm Bureau and Boone County Farm Bureau voted to merge September 1 and became known as the Winnebago-Boone Farm Bureau. The new organization was co-managed by Roger Christin, FBCM and Ann Marie Cain.

Safety Expo was held in Boone County for 164 fourth grade students in Belvidere. The Young Leaders hosted their 13th Annual Angel Tree toy drive for Boone County as part of the Belvidere Hometown Christmas Celebration. Over 200 gifts were donated to local students.

Roger Christin, FBCM, Farm Bureau Manager retired on December 31 after 20 years of service in Winnebago County (total of 39 years with Farm Bureau).

2013

Don Williams, Williams Tree Farm spoke at the annual Farmer Breakfast sponsored by the Farm Bureau for members of the Belvidere Chamber of Commerce.

Boone and McHenry Farm Service Agency (FSA) consolidated and Winnebago and Stephenson FSA consolidated.

Ann Marie Cain was officially hired as the Winnebago-Boone Farm Bureau Manager. Diane Cleland was hired as the new Agriculture Literacy Coordinator to grow the Ag in the Classroom program in Boone and Winnebago counties.

Johnson Dairy Farm hosted the 16th Annual Farm Breakfast. Over 900 people attended the breakfast and helped raise funds for the Boone County Farm Bureau Foundation. Over 1,100 attended the Fourth Annual Charity Tractor Pull at the Boone County Fairgrounds for the Boone County Farm Bureau Foundation. (This is the second year that BCFB Foundation was

the beneficiary of the pull.)

Roger Christin was elected as Vice Chair of the IFB Quality of Life ACTION Team. John Mitchell won the District 2 Discussion Meet.

Former Boone County Farm Bureau Manager, Kenny Harris passed away. The Farm Bureau office located at 702 W Locust Street, Belvidere was closed on November 27, 2013. (The building was sold in 2015).

The Young Leaders hosted their 14th and final Annual Angel Tree toy drive for Boone County.

2014

Stephenson, Carroll, Jo Daviess, Ogle and Winnebago counties hosted the IAA Foundation's 19th AITC Bike Ride on September 1-3, 2014. Young Leaders held their first annual "Harvest for All" meat raffle to raise money for the Rock River Valley Food Pantry. Emily Hanlin, our first intern, was hired in December as the Winter Intern.

Farm Bureau partnered with McHenry County to host an informational meeting at the IL Machine Shed, Rockford, IL on the new water reporting rules. As of 2015, agriculture was no longer exempt from reporting water usage from high-capacity wells. A high capacity well is one or multiple wells on a property with the combined capacity to withdraw 100,000 gallons of water per day.

Boone County Ag Days continued for Boone County third graders.

Friendly Franseen Acres hosted the 17th Annual Farm Breakfast. Over 1,400 people attended the breakfast and helped raise funds for the Boone County Farm Bureau Foundation. Over 1,000 attended the Boone County Farm Bureau Foundation's Fifth Annual Charity Tractor Pull at the Boone County Fairgrounds.

John Mitchell and Carrie Pollard won the District 2 Discussion Meet. Roger Christin was elected as Chair of the IFB Quality of Life ACTION Team.

2015

The Boone County Farm Bureau Foundation and the Winnebago County Farm Bureau Foundation merged January 1.

Sam Kowalczyk was hired as the new Ag Literacy Educator. Emily Hanlin returned as our Spring Intern. During the 2014-

2015 school year, the AITC program reached over 5,900 students. Bailey Hart and Emily Hanlin served as our Summer Interns.

Friendly Franseen Acres stepped in to host the 18th Annual Farm Breakfast after the Aves Dairy Farm was hit by a tornado in April. Over 1,400 people attended the breakfast and helped raise funds for the Winnebago-Boone Farm Bureau Foundation. Over 1,000 attended the Sixth Annual Charity Tractor Pull at the Boone County Fairgrounds.

Winnebago-Boone Farm Bureau hosted the first Member Appreciation Picnic on July 25 at the Farm Bureau location on Meridian Road, Rockford. Over 360 members and their families attended. COUNTRY Financial co-sponsored the event. Emily Hanlin was hired as one of our Administrative Assistants.

John Mitchell and Carrie Pollard were selected as the District 2 Discussion Meet Winners. Aaron Mitchell and Brent Pollard were both selected as alternates. Aaron and John Mitchell competed at the State Discussion Meet. Both advanced to the Sweet Sixteen. John advanced to the Top 4.

Mitchell Dairy and Grain, LLC, Winnebago, IL, hosted U.S. Representative Cheri Bustos' Farm Talks on October 19. She discussed her recent bipartisan agricultural trade mission to Cuba with farmers from Winnebago and Stephenson counties. She concluded the Farm Talk with a tour of the dairy.

Emily Newcomer replaced Sam Kowalczyk as our Ag Literacy Educator on October 8th.

Conserv FS "declared record levels of patronage refunds of \$3.25 million to be paid out to members for 2015 fiscal year purchases. The patronage payout was paid 70 percent cash and 30 percent Class E stock. This made the seventh consecutive year of patronage refunds paid by Conserv FS. It also tied the previous year for the highest ever payout at \$3.25 million."

Brent and Carrie Pollard were recognized by the IFB for winning the 2015 Young Leaders Achievement Award. They represented Illinois at

the American Farm Bureau Federation Annual Convention.

2016

Farm Bureau partnered with the local Soil and Water Conservation Districts, Boone County Conservation District and the Forest Preserves of Winnebago to host a Nutrient Management Seminar to learn more about the Illinois Nutrient Loss Reduction Strategy and ways to reduce nitrogen loss through cover crops, nutrient management strategies, tile drainage management and available cost-share and incentive programs.

Farm Bureau kicked off National Ag Week with our first Annual Ag All Around Us interactive event at the Discovery Center Museum. Over 1,500 attended during the four-hour event.

Winnebago-Boone Farm Bureau with the help of IAA legal staff, took the lead and played an active role in providing information to members on the proposed Great Lakes Basin Transportation project through mailings, articles and our website. Directors and members submitted written comments and spoke at the Public Scoping Meetings held by the Federal Surface Transportation Board held in Belvidere and Rockford on April 19.

Estella Crespo, fourth grade teacher at Nashold Elementary, Rockford, IL, was recognized as the "2016 AITC Teacher of the Year". During the 2016-2017 school year, the AITC program reached over 11,000 students. Bailey Hart returned as the Summer Intern.

Aves Dairy Farm hosted the 19th Annual Farm Breakfast. Over 900 people attended the breakfast and helped raise funds for the Winnebago-Boone Farm Bureau Foundation. Over 1,200 attended the Seventh Annual Charity Tractor Pull at the Boone County Fairgrounds.

Farm Bureau held a landowners meeting on protecting property rights regarding renewable energy project leases. The second Member Appreciation Picnic was held in September at Paulson's Agricultural Museum of Argyle, Caledonia, IL. Over 380 members and their families attended. COUNTRY Financial co-sponsored the event.

John Mitchell and Carrie Pollard won the District 2 Discussion Meet.

Winnebago-Boone Farm Bureau Ag in the Classroom received a \$2,000 grant from the Boone County Community Foundation to grow the program in Boone County.

2017

Winnebago-Boone Farm Bureau was recognized at the American Farm Bureau Federation Annual Meeting, January 6-11, 2017, in Phoenix, AZ for our Ag All Around Us event we hosted with the Discovery Center Museum, Rockford, IL in celebration of National Ag Day.

The Winnebago-Boone Farm Bureau Foundation hosted a \$25,000 raffle in conjunction with the annual Charity Tractor Pull on June 24 to raise funds.

Eppy Bunyard, first grade teacher at



Carlson Elementary, Rockford, IL, was recognized as the "2017 AITC Teacher of the Year". During the 2016-2017 school year, the AITC program reached over 19,000 students.

The Young Leaders partnered with Culver's of Winnebago to host a share night in June to raise funds for the local food pantries. The Young Leaders provided a petting zoo, kids games, farm equipment and more for families to get a taste of agriculture.

Family Af-Ayr Dairy hosted the 20th Annual Farm Breakfast. Over 1,100 people attended the breakfast and helped raise funds for the Winnebago-Boone Farm Bureau Foundation. Over 1,000 attended the last Annual Charity Tractor Pull at the Boone County Fairgrounds.

| WINNEBAGO-BOONE HISTORY

Jason Meyers and John Cordray of Belvidere, IL won the Foundation's \$25,000 Raffle awarded at the Charity Tractor Pull.

Farm Bureau hosted a Farm Equipment 101 for local emergency responders in July at Priest Farms, Capron, IL. The class introduced 30 firefighters from 10 districts from northern Illinois and southern Wisconsin to common equipment found on local farms. Volunteer farmers and firefighters provided the instruction on equipment hazards and possible accident scenarios.

Rebecca Sprague served as the Summer Intern. Sheri Lee was hired as one of our Administrative Assistants. Katie Rudy and Doni Nelson replaced Emily Newcomer as our Ag Literacy Educators.

Brent and Amber Mueller, Claretta Dairy, Garden Prairie, IL hosted a farm tour for 48 German farmers and John Deere Dealers on Labor Day. Brothers, John and Aaron Mitchell, Mitchel Dairy and Grain, LLC., Winnebago, IL hosted a farm tour for Northern Illinois University Dietitian Undergrad Students. Students learned about the great care farmers give their cows from cow comfort (comfortable bedding, fans, misters and rolling brushes) to a well-balanced diet. Mitchell Dairy and Grain, LLC, Edwards Apple Orchard West and Central Grain Elevator hosted six McCloy Fellowship participants from Germany on November 22, 2017.

Winnebago-Boone Farm Bureau brought home the Gold from the IAA Foundation 2017 Trivia Night during the 2017 IAA Annual Meeting.



Members had fun as they competed in the Winter Olympics Trivia Night and raised money for Agriculture in the Classroom.

2018

The Winnebago "2018 AITC Teacher of the Year" was awarded to Erikka Colleta, third grade teacher at Stone Creek Elementary School, Roscoe. The Boone "2018 AITC Teacher of the Year" was awarded to Tina Babcock, third grade teacher at Poplar Grove Elementary School, Poplar Grove. During the 2017-2018 school year, the AITC program reached over 27,000 students.

The Hildebrandt Dairy hosted the 21st Annual Farm Breakfast. Over 2,000 people attended the breakfast and helped raise funds for the Winnebago-Boone Farm Bureau Foundation. Emily Hanlin resigned as Administrative Assistant.

John Mitchell won the District 2 Discussion Meet and Aaron Mitchell was selected as the alternate.

Farm Bureau adopted Representative Jonathon Carroll who replaced Representative Elaine Nekritz following her retirement.

Farm Bureau hosted our third Member Appreciation Picnic at Williams Tree Farm in September. Over 360 members attended. COUNTRY Financial co-sponsored the event. Jason Johnson won the grand prize of \$15,000; Dale Cox won \$7,500; and Janet Hunt won \$2,500 from the Winnebago-Boone Farm Bureau Foundation's \$25,000 raffle.

Ann Marie Cain, Manager, achieved the Certified Farm Bureau Manager status.

Directors Brent Pollard and Phillip Raines presented the IFB Friend of Agriculture award to our Adopted Legislator, Representative Jonathon Carroll.

2019

Winnebago-Boone Farm Bureau was recognized at the American Farm Bureau Federation Annual Meeting, January 11-16, 2019, in New Orleans, LA for our Making Sense of Food Labeling consumer education efforts.

WBFB partnered with McHenry County Farm Bureau and COUNTRY Financial to host a Dairy Revenue Protection information meeting for local dairy farmers.

WBFB, Winnebago County SWCD and U of I Extension jointly held a soil compaction seminar and a cover crop seminar for

local producers.

The Winnebago "2019 AITC Teacher of the Year" was awarded to Regina Bolden, sixth grade teacher at RESA Middle School, Rockford. The Boone "2019 AITC Teacher of the Year" was awarded to Shannon Harkness, second grade teacher at Capron Elementary School, Capron. During the 2018-2019 school year, the AITC program reached over 34,000 students. The WBFB Foundation awarded twelve \$1500 scholarships.

Mitchell Dairy and Grain, LLC., Winnebago, IL opened their doors for a Consumer Farm Tour in June. Consumers learned about milk quality, cow and calf care, nutrition, housing and antibiotics.

The Luckey Dairy Farm, Caledonia, IL



hosted the 22nd Annual Farm Breakfast. Over 1,300 people attended the breakfast and helped raise funds for the Winnebago-Boone Farm Bureau Foundation.

Farmers met with U.S. Congressman Adam Kinzinger at the Winnebago-Boone Farm Bureau fair building on August 6 at the Boone County Farm to discuss trade (USMCA and China), discrepancies in the June crop report, border security and local events.



Greta Koebel and John Mitchell from Boone and Winnebago were two of the three winners that represented District 2 at the State Discussion Meet.

Over 60 members and residents attended a Pollinator Habitat meeting co-sponsored by the Winnebago-Boone Farm Bureau, Illinois Farm Bureau and the Forest Preserves of Winnebago Co.

Mental health was promoted this year. Wet spring, late planting, wet fall, late harvest and low prices due to Trade issues with Canada, Mexico and China lead to a stressful year.

The Winnebago-Boone Christmas Peanuts gathered in Chicago at the IAA Annual Meeting on Sunday, December 8th to help raise money of Agriculture in the Classroom during the IAA Foundation's Annual Trivia Night. We helped raise \$19,500 for Illinois Agriculture in the Classroom. Congrats to our members who helped bring home the 1st place traveling trophy.

2020

Holly Wakeley and Christy Youtzy joined our Ag Literacy Team as Ag Educators.

The Winnebago-Boone Farm Bureau continues to engage consumers through our outreach efforts at the Discovery Center Museum, WFBF Foundation's Farm Breakfast, Rockford City Market, Boone County and Winnebago County Fairs, farm tours, media and social media. Agriculture's voice continues to be heard through our work with local, state and federal government officials, Adopt-a-Legislator program and our members involvement with FB Act.

Farm Bureau Women's Activities Comm

22 Resolutions Recently Adopted At State Farm Bureau Annual Meeting

Following is a summary of the resolutions adopted by the Illinois Agricultural Association, statewide Farm Bureau organization, at its 61st annual meeting held Nov. 14-17 in Chicago.

I. Strengthening Voice of Agriculture—Calls for more intensive use of all channels of communications. Also calls for expanded Farm Bureau policy development and execution program. Recommends broader public relations program to win understanding and respect of other groups. Advocates more leadership training within organization.

II. Family Activities in Farm Bureau—Step up participation of both women and young people in Farm Bureau activities. Specific fields of participation for women and Rural Youth include policy making and activation, public relations and membership work.

III. Farm Bureau Extension Service Relationships—The IAA will support efforts to maintain and strengthen the long time excellent relationships and cooperation between County Farm Bureaus and the U. of I. College of Agriculture to provide a stronger and better extension program and an equally adequate Farm Bureau program for members.

IV. Promotion and Advertising of Agricultural Products—Farm Bureaus will cooperate and work with organizations in increasing sales of farm products at the retail market level.

V. National Farm Policy—Farm Bureau's objective is full parity of opportunity and income for farm people. Farm Bureau favors a shift in emphasis from government supports and controls to a soil fertility approach to adjusting farm production. The IAA will support legislation to provide for an acreage allotment of soil building crops; require compliance with this fertility allotment to participate in ACP and price support programs; and remove restrictions on land not included in conservation allotment and marketing quotas.

As intermediate steps to halt surpluses, the IAA will support legislation to require cross-compliance and total acreage allotments when warranted; require diverted acres be planted only to soil building crops that can't be harvested or pastured; provide ACP payments to cover cost of seed and soil treatment if needed for seeding diverted acreage; change support range on basic commodities to 80-90 per cent of parity; revise method of setting support levels to provide "realistic" levels; establish different support levels for different qualities of a commodity; immediately suspend acreage controls on corn and revise laws governing CCC minimize movement and expedite utilization.

The IAA also opposes using federal funds to bring new land into production so long as surpluses exist.

VI. Expanded Markets for Agricultural Products—Calls for increased (Continued on Page 2)

As intermediate steps to halt surpluses, the IAA will support legislation to require cross-compliance and total acreage allotments when warranted; require diverted acres be planted only to soil building crops that can't be harvested or pastured; provide ACP payments to cover cost of seed and soil treatment if needed for seeding diverted acreage; change support range on basic commodities to 80-90 per cent of parity; revise method of setting support levels to provide "realistic" levels; establish different support levels for different qualities of a commodity; immediately suspend acreage controls on corn and revise laws governing CCC minimize movement and expedite utilization.

The IAA also opposes using federal funds to bring new land into production so long as surpluses exist.

VI. Expanded Markets for Agricultural Products—Calls for increased (Continued on Page 2)

Our Wish For All Our Members Are These
 Few Words of Cheer,
 A "MERRY, MERRY CHRISTMAS"
 And A "PROSPEROUS NEW YEAR"





FARM BUREAU BAND

FROM BOONE COUNTY THEN AND NOW, 1835-1976

by Virginia B Moorhead

"Ed C. Foley, Farm Bureau Advisor, felt there was a need for music among the rural folk of Boone County. With Clarence Gates, Director of the Belvidere High School Band, and Harry Johnson of Capron Band, units were organized at the Blaine Church, Jefferson Prairie Church, and Beaver Valley Grange Hall in 1930. Harold Luhman organized a unit at Irene that met in the Ladies' Aid Hall. One of the first concerts was performed in Poplar Grove under the direction of Harry Johnson. For two dollars a month, each member received a weekly private lesson, a unit rehearsal and a county band rehearsal.

From July, 1930 under the leadership of Harold Luhman, the band grew in numbers and proficiency. It won national praise when it appeared at the Illinois Agricultural Association State Convention at the Faust Hotel, Rockford, in 1932. For five years commencing in 1932 it appeared at the Chicagoland Music Festival.

One of the highlights of the Farm Bureau Band's career was its appearance at the Century of Progress in Chicago in 1933 when it performed a concert before and after an address by the Secretary of Agriculture, Henry A Wallace, on Farmers' Day. An eleven-coach special train was chartered to transport the Boone County group.

By January, 1932, three small orchestras had been organized with the Irene orchestra winning first prize at the state competition at the University of Illinois, Urbana.

In August, 1935, the band and county choir performed at the Illinois State Fair in Springfield, after which Lehuman left to attend college, leaving Wallace Mitchell to direct the band until his return for the summer of 1936. The band appeared last at the Illinois Sports Festival in 1937 at Urbana. This closed a bright era of musical achievement for many of our area residents, both young

and old. Warm friendships are renewed with reunions every five years, the next one being in 1980 with Russell McEachran as president."

History highlights from the Boone County Farm Bureau archives:

Following was a report on the Band given at the Boone County Farm Bureau Annual Meeting on March 19, 1932: "This report on the band showed that in addition to paying for itself and furnishing the county unit with an asset that will grow in years to come and one that has brought extensive advertising to the entire community, it helped members in the purchase of instruments to the extent of \$568.04. The total income from this organization was \$1,203.98 and the net income was \$155.30." (The Daily Republican, Belvidere, IL March 21, 1932)

The band played for "as high as 5,000 people" at the joint picnic of the Boone County Farm Bureau and the Pomona Grange on July 4, 1932 held at the fairgrounds. C.D. Gregory, editor of "The Prairie Farmer" was the principal speaker at the event. (Republican-Northwestern, Belvidere May 24, 1932; Republican-Northwestern, Belvidere June 28, 1932 and The Daily Republican, Belvidere July 5, 1932 publications)

The 1932 Boone County Farm Bureau Band played at the Chicagoland music festival on August 20, 1932. The program was broadcasted from WGN radio station, Chicago.

"All roads lead to Chicago today for the Chicagoland music festival will start tonight at 7:30 o'clock, Chicago time. A group of 118 from Boone County including the band left this morning in busses and scores of others from Belvidere and vicinity hoped to leave later in the day.

Two Boone County organizations including the County Farm Bureau band and the Boone-McHenry high school band of Capron



ASSEMBLED FOR A REUNION of the Boone County Farm Bureau band are, left to right, in front row: Howard Milner, Warren Paulson, Don Paulson, Hillis Swanson, Harold Johnson, Richard Knutson, Vernon Johnson, Robert Campbell, Boyd Rickart, Ernest Smith, Bernard Allen, Middle row: Harold Lohman, Beth Herbert Lohman, Stuart Salley, Wayne Greenlee, Wilbur Ralston, Marjorie Greenlee Salley, Jeannette Greenlee Ralston, Avis Swanson, Dorothy Hall Wych, Frances Swanson Gask, Eunice Ball-

arm Bureau band are, left to right, in front
 Hillis Swanson, Harold Johnson
 st Smith. Row

will be among the participating organizations. The program will be broadcast from Station WGN, Chicago, as one of the radio treats of the evening. The personnel of the Farm Bureau band is as follows:

B-flat clarinets: Marjorie Shiver, Elinore Johnson, Mary Seal, Emma Jeanne Salley, Raymond Keeler, Charlotte Venable, Elmer Schoonmaker, Leon Stennerson, Margaret Houdeshell, Howard Bowley, Frances Banks, Remona Page, Cora Adams, Margaret Dawson, John Piel, Charles Harned, Jim Hyland, Ronald Hendrickson, Verle Lane, and Betty North. Bass Clarinet: Helen Salley. Bassoon: John Stanton. Oboe: Beth Herbert. Piccolo: Lola Page. Flute: Dorothy Hall, Dorothy Fellows and Jack Venable. Basses: Irving Edwards, Gerald Houdeshell, Stuart Salley, Robert Perrin, and Howard Roach. Drums: Robert Evans, Paul Evens, and Paul Stennerson. E-flat alto saxophone: Boyd Rickart, Glenn Miller, Ethel Schoonmaker, Donald Menge, and Marjorie Johnson. Tenor Saxophone: Avis Swanson and Dorothy Manson. Baritone Saxophone: Melvin Uting. B-flat Cornets: Maynard Graham, Wayne Hurst, Roy Hurst, Russel Salley, Wilbur Willet, Arthur Stranberg, Emory Houdeshell, Robert Houdeshell, Robert Gustafson, Andrew File, Harold Peterson, Ernest Smith, Robert Menge, and Merlin Meyers. Trombones: Lee Rickart, Richard Williams, Dorothy Sheard, Chester Watts, Howard Milner, and Albert Adams. Baritones: Bill Rogers and Mary Volz. Horns: Charles Case, Fred Allen, Milton Page, Terresa Sheard, and Astrid Lynes." (Republication August 20, 1932)

Farm Bureau Band Wins Much Praise from Many Cities

Secretary Vandercook School of Music adds his compliments to performance of Boone County Organization- says not one of the many participating bands marched better.

Echoes of the Boone County Farm Bureau band's participation in the Chicagoland Music Festival at Soldier field in Chicago Saturday

night continue to praise the fine showing of the organization.

A letter received yesterday by Harold Luhman, director, from H.E. Nutt, secretary of the Vandercook School of Music in Chicago expresses the opinion of an expert who was impressed by the musicians from this county. Excerpts from the letter follow:

"Dear Harold: I could hardly believe my eyes; you know uniforms make a wonderful difference in looks, but the big thing was- they really marched, and kept nice lines both ways the full length of the field. They started together and stopped together. Due to many organizations, bands and drum corps that were on the field, I could not hear the music from your band but their fine marching was evidence that they did a good job in playing. The drum major did fine. Let me say again, there was not a competing band that marched better and I make no exceptions to that statement, you surely have a fine bunch of young folks to work with and you know how to get the most out of them. I extend my best wishes and congratulations to you and your band and I sure want to hear them again."

The above letter is one of the numbers of messages of praise that have been received commending the band for its fine performance. Melvin Uting of the Beaver Valley Unit was the drum major of the local band who draws the praise from Mr. Nutt in the above letter. (Republication August 25, 1932)

Three Boone County Farm Bureau Bands took part in the Chicagoland Music Festival on August 15, 1936. "A 30-piece juvenile band will compete in a class D, a 45-piece juvenile group will compete in class C, and 30 adults will comprise the group who will represent the county in the class B competition". (The Daily Republican, Belvidere August 5, 1936)

ELAINE NEKRITZ



One of my favorite things about being a legislator was participating in the Illinois Farm Bureau Adopt-A-Legislator program. I thought it was a pretty cool idea when I first learned about it, but I could never have predicted how much fun I would have, how much I would learn from all of you and how important the relationships we built would be. I feel like I hit the jackpot as the Winnebago-Boone Farm Bureau adoptee!

So many memories flood back to me as I reflect on the amazing experiences you provided me. Trimming young Christmas trees, planting and combining corn (trying to keep a straight row!), covering up from head to toe and holding my breath in a hog farrowing barn, sipping raspberry wine and watching ethanol being produced - just to name a few.

And I remember being so excited hearing about cover crops for the first time on a beautiful sunny fall day. I couldn't wait to get home and tell my husband all about how cover crops were going to save the planet!!

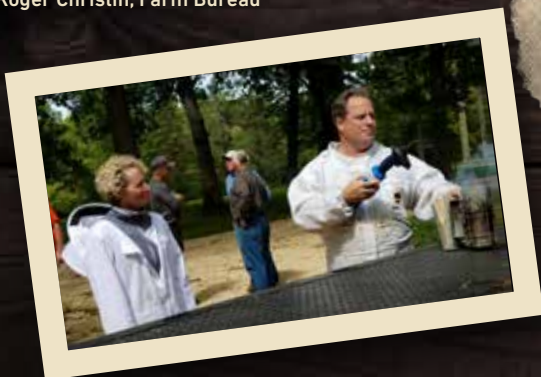
But most important to me is the friendships. You welcomed me into your community, shared the land that you love with me and made me feel right at home. I will treasure these many memories forever.

Elaine Nekritz

*Nekritz Amdor Consulting LLC
Former State Representative District 57
Winnebago County Farm Bureau Adopt-A-Legislator 2004-2012
Winnebago-Boone Farm Bureau 2012-2017*



L to R: Bernie Walsh, Gary Shedd, Mary Palmer, Sid Moate, Representative Elaine Nekritz and Roger Christin, Farm Bureau Manager



L to R: Representative Elaine Nekritz, Gary Greenlee, Curt Greenlee, Richard Beuth and Phillip Raines, Raines Honey Farm, at the Torstenson Center, Pecatonica, IL on September 7, 2017.

FRIENDS OF AGRICULTURE RECIPIENTS



Senator Brad Burzynski was presented with the 2004 Illinois Farm Bureau Friend of Agriculture award by Winnebago County Farm Bureau President Larry Larson on Monday, October 4th at the Machine Shed Restaurant in Rockford, IL.



On October 10, 2018, the Winnebago-Boone Farm Bureau thanked our local legislators for their support of agriculture. Richard Beuth, Farm Bureau President awarded Senator Steve Stadelman, Senator Dave Syverson, Representative Joe Sosnowski, and Representative John Cabello with the 2018 Illinois Farm Bureau Friend of Agriculture Award.

SENATE

Jack Schaffer, District 32: 1990 & 1992

Joyce Holmberg, District 34: 1992

Harlan Rigney, District 35: 1990

Dave Syverson, District 35: 1996, 2000, 2002, 2008, 2010, 2012, 2014, 2016, 2018

Bradley Burzynski, District 35: 1992, 1994, 1996, 1998, 2000, 2002, 2004, 2006, 2008, 2010

Todd Sieben, District 45: 2000, 2002, 2006

Tim Bivins, District 45: 2008, 2010, 2014, 2016

Steve Stadelman, District 34: 2014, 2016, 2018

HOUSE

John Hallock 1990

Myron Olson 1990

Douglas Scott 1996, 1998, 2000

Barbara Giolitto 1994

Ronald Wait 1990, 1992, 1996, 1998, 2000, 2002, 2004, 2006, 2008

Michael Rotello 1992, 1994

David Winters 1996, 1998, 2000, 2002, 2004, 2006, 2008, 2010

Chuck Jefferson 2002, 2004, 2006, 2008, 2010, 2012

Jim Sacia 2004, 2006, 2008, 2010

Litesa Wallace 2016

John Cabello 2014, 2016, 2018

Robert Pritchard 2014, 2016

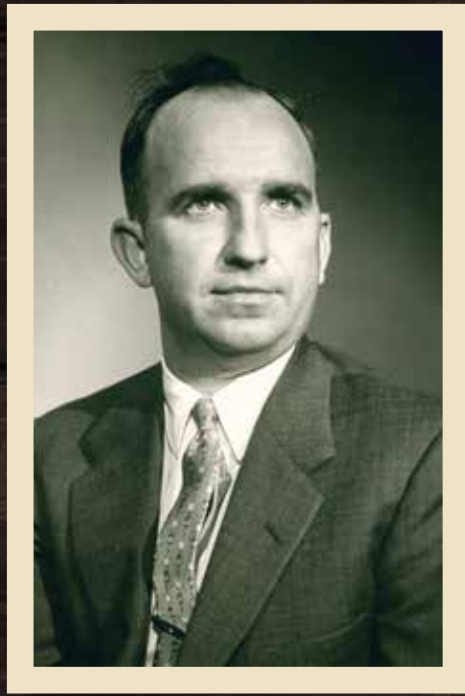
Brian Stewart 2014, 2016, 2018

Jeff Keicher 2018

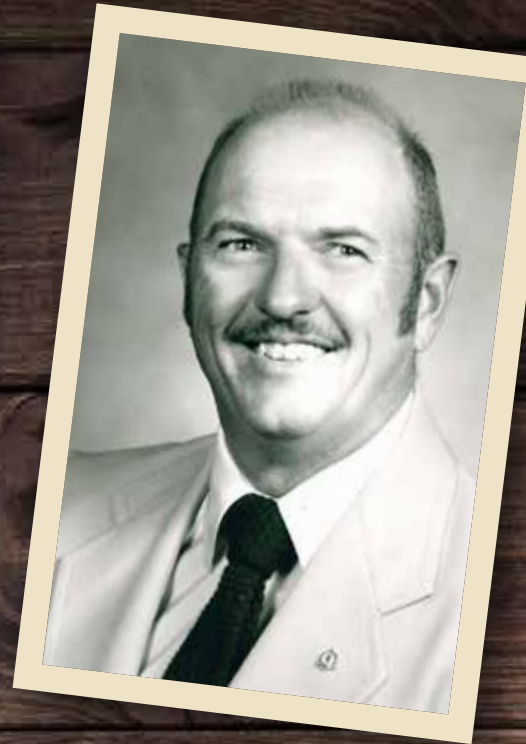
Andrew Chesney 2018



1922-1933
District 12
GEORGE F. TULLOCK
Winnebago Co.



1964-1969
District 1
JAMES P. CANNELL
Boone Co.



1983-1984
District 2
RALPH FRANTZ
Winnebago Co.





1993-2004
District 2
ROBERT PHELPS
Winnebago Co.



2015-present
District 2
EARL WILLIAMS JR.
Winnebago Co.

IAA DIRECTORS



WOMEN'S COMMITTEE CHAIRS

WINNEBAGO COUNTY

1955-1957	Mrs. Rex (Sarah) Light
1958	Mrs. Rex (Sarah) Light and Mrs. Ray (Carol) Pollard
1959-1960	Mrs. Ray (Carol) Pollard
1961	Mrs. Rex (Sarah) Light
1962	Mrs. Ray (Carol) Pollard
1963	Mrs. Clarence Sherman and Mrs. Ray (Carol) Pollard
1965	Mrs. Willis Seele and Mrs. Burge (Ella) Pearson
1966	Mrs. Willis Seele
1967-1972	Mrs. Charles (Dorrie) Zimmerman
1973-1975	Teri Wedig
1976-1977	Pat Stahl and Hazel Ralston
1978	Pat Stahl
1981	Pat Stahl and Sue Tipton
1983	Shirley Franz and Barbara Greenlee
1985	JoAnn Binger and Gail Pollard
1986-1988	Gail Pollard
1989-1994	Gail Pollard and Dorrie Zimmerman
1996	Dorrie Zimmerman

BOONE COUNTY

1957	Mrs. Wilbur Reid
1960-1961	Mrs. Earl Cook
1962	Mrs. Earl Cook and Mrs. Wilbur Reid
1963-1964	Jackie Cook
1965	Jackie Cook and Mrs. Wilbur Reid
1966	Dorothy Erwin and Joanne Reid
1967-1968	Mrs. Robert Erwin and Mrs. Wilbur Reid
1969	Mrs. Lloyd (Ruby) Turner and Mrs. William Genrich
1970	Mr. Lloyd (Ruby) Turner and Mrs. Donald (Norma) Gesell
1972-1975	Ann Turner and Norma Gesell
1976	Mrs. Wayne Wares and Mrs. Dale Nord
1977	Mrs. George (Ruby) Flemming and Marilyn Blake
1978	Mrs. George (Ruby) Flemming and Marilyn Blake
1979-1980	Carol Newport
1981-1982	Gen Ellingson
1983-1984	Agnes Mathison
1985-1986	Nova Larson
1987-1993	Norma Gesell and Gen Ellingson
1994	Norma Gesell and Debbie Klinefelter
1995-1996	Norma Gesell and Diane Brockmann
1997-2003	Norma Gesell and Rita Carter
2004-2007	Norma Gesell



above picture s
Committee. Seated
Mrs. Burge Pearson
ay Pollard, chairm
standing, left to right
Pecatonica; Mrs.
ict representative
eyer, Seward;
Cherry Valley
iam Cross, Wi
Light, Harri

COMMITTEE REPRESENTATIVES



Above picture shows this year's Farm Bureau Women's Action Committee. Seated, left to right: Mrs. Richard Dickson, Du-
Burge Pearson, Rockton; Mrs. Richard Babcock, Roscoe;
Pollard, chairman, Rockford; and Mrs. Richard Shade,
anding, left to right: Mrs. Willis Seale, Guilford; Mrs. Floyd
Pecatonica; Mrs. Duane Lightfoot, Burrill; Mrs. Raymond
district representative on the State Women's Committee; Mrs.
Rittmeyer, Seward
Palm, Cherry Val
rs. William Cross,
Mrs. Rex Light,

DISTRICT 2:

1958-1969.....Mrs. Raymond (Muriel) Hass, Winnebago County

1979-1987.....Mrs. Larry (Hazel) Ralston, Winnebago County

DISTRICT 1:

1980-1986.....Mrs. Donald (Norma) Gesell, Boone County

IAA STATE WOMEN'S

COMMITTEE OFFICERS:

1983-1984Vice Chairman- Mrs. Larry (Hazel) Ralston, Winnebago County

1984-1985.....Chairman- Mrs. Larry (Hazel) Ralston, Winnebago County



Hazel Ralston, Winnebago



Norma Gesell, Boone



Hazel Ralston of Roscoe in Winnebago County (District 2) has been elected chairman of the 1984-85 Illinois Farm Bureau Women's Committee. The new vice-chairman is Hazel Fritz of Dunlap in Peoria County (District 1). New committee members are Norma Baker of

Manhattan in Will (District 5), June Easton of Greenup in Cumberland County (District 13) and Kathy Herrmann of Roscoe in Woodford County (District 7). Pictured are (seated) Hazel Ralston and Hazel Fritz. Standing are Norma Baker, June Easton and Kathy Herrmann.

STATE ACHIEVEMENT AWARD WINNERS



2015- Brent & Carrie Pollard, Winnebago-Boone

YOUNG PEOPLE COMMITTEE

1958-59 Paul Larson, Boone County, District 1

YOUNG FARMER COMMITTEE

1967-69 Clifford Camp, Boone County, District 1

1969-71 Herb Walberg, Boone County, District 1

1980-84 Robert Phelps, Winnebago County, District 2
(served as State Young Farmer Chair 1983-1984)

YOUNG LEADER COMMITTEE

2010-2014 Brent Pollard, Winnebago County & Winnebago-Boone
District 2 (served as State Young Leader Chair 2012-2013)

2018- Present Aaron Mitchell, Winnebago-Boone, District 2



Brent Pollard



Aaron Mitchell



Robert Phelps



COMMITTEE CHAIRS

BOONE COUNTY FARM BUREAU

- 1965..... Max Newport
- 1966..... Clifford Camp
- 1968..... Herb Walberg
- 1970..... David Yakey
- 1971-1972..... Larry Osterberg
- 1974-1975..... Tim Crawford
- 1981..... Jack Nimitz
- 1983-1985..... John Cleland
- 1991-2000..... Jeremy Klinefelter
- 2001-2004..... Todd Aves
- 2005-2009..... Scot Sell
- 2010-2012..... Kenny Beever

WINNEBAGO COUNTY FARM BUREAU

- 1966..... David Stahl and Donald Miller
- 1967..... David Stahl and Weyburn Kelsey
- 1969..... Dennis Freedlund
- 1972..... Richard Carlson
- 1974..... Richard Beuth
- 1975..... Warren Pollard
- 1977..... Robert Phelps
- 1981..... Arlene Williams and Dan Dietmeiere
- 1982..... Gary Shedd
- 1983..... Terry Carlson
- 1988..... Dennis Cross
- 1991-1992..... Jim Sohner
- 1993..... Jim & Deb Sohner
- 1997..... Jim Sohner
- 2001..... Barry Palm
- 2010..... Brent Pollard
- 2011-2012..... Paul Beuth and John Mitchell

WINNEBAGO-BOONE FARM BUREAU

- 2012-2014..... Paul Beuth &
John Mitchell,
Co-Chairs
- 2015..... John Mitchell
- 2016..... Paul Beuth
- 2017-2018..... Aaron Mitchell
- 2019-current David Hunt



David Hunt

MEET WINNERS

STATE DISCUSSION MEET WINNERS

- 1967 Herb Walberg- Boone County
(placed second at AFBF in 1968)
- 1974 Richard Carlson- Winnebago Co was runner up
- 1977 Dave Winters- Winnebago Co. was runner up.

DISTRICT II DISCUSSION MEET WINNERS

- 1967 Dave Stahl- Winnebago Co.
- 1968 Dennis Freedlund- Winnebago Co.
- 1973 Rich Erickson- Winnebago Co.
- 1974 Richard Carlson- Winnebago Co.
- 1976 Richard Carlson- Winnebago Co.
Dave Winters- Winnebago Co.
- 1977 Dave Winters- Winnebago Co.
- 2007 Carrie Pollard- Winnebago Co (alternate)
- 2008 Brent Pollard- Winnebago Co (alternate)
- 2009 Carrie Pollard- Winnebago Co.
- 2010 Brent Pollard- Winnebago Co. (alternate)
- 2011 John Mitchell- Winnebago Co.
- 2012 John Mitchell- Winnebago Co.
- 2013 John Mitchell- Winnebago-Boone
- 2014 John Mitchell- Winnebago-Boone
Carrie Pollard- Winnebago-Boone
- 2015 John Mitchell- Winnebago-Boone
Carrie Pollard- Winnebago-Boone
Aaron Mitchell- Winnebago-Boone
(alternate, competed in State)
Brent Pollard- Winnebago-Boone (alternate)
- 2016 John Mitchell- Winnebago-Boone
Carrie Pollard- Winnebago-Boone
- 2017 Aaron Mitchell- Winnebago-Boone
John Mitchell- Winnebago-Boone
- 2018 Aaron Mitchell- Winnebago-Boone
John Mitchell- Winnebago-Boone
- 2019 Greta Kobel- Winnebago-Boone
John Mitchell- Winnebago-Boone



Dave Winters



Herb Walberg –



Winnebago County Young Leaders completed at the District 2 Young Leaders Discussion on August 22, 2012 at Stephenson County Farm Bureau in Freeport, IL.

L to R: Aaron Mitchell, Paul Beuth, Jen Wakeley, Holly Wakeley, and John Mitchell.

ALOT HELPS AG LEADERS TODAY!

ALOT GRADUATES

1980

Patricia Stahl- Winnebago

1982

Gary Shedd- Winnebago

Dennis Wilke- Winnebago

Dave Winters- Winnebago

1984

Daniel Richardson- Winnebago

Earl Williams, Jr- Winnebago

1988

Randy Adkins- Winnebago

Larry Larson- Winnebago

John Reid- Boone

1990

Gail Pollard- Winnebago

Marshall Newhouse- Boone

1992

Parker Brauer- Winnebago

1996

Jon Lang- Winnebago

Jodi Lenkaitis- Winnebago

Mike Mitchell- Winnebago

2000

Terry Adkins- Winnebago

2003

Richard Beuth- Winnebago

Brent Mueller- Boone

Mary Palmer- Winnebago

2006

Ken R. Beever- Boone

Brent C. Pollard- Winnebago

2013

Michael Lang- Winnebago

Paige M. Heinke- Winnebago

John R. Mitchell- Winnebago

Paul C. Beuth- Winnebago

Illinois Farm Bureau® created "Agricultural Leaders of Tomorrow" (ALOT), an agricultural leadership development program designed to give participants a head start on tackling tomorrow's responsibilities.

Twenty-nine IFB members representing 13 counties have successfully completed the 34th ALOT program. Paul Beuth, Paige Heinke, Michael Lang, and John Mitchell represented Winnebago-Boone County. The 2013 ALOT sessions were held in northern Illinois. To date, 1045 participants have graduated from the program.

The eight-week training program allows participants to study and develop leadership skills in the areas of communication, political process, agricultural economics, and global issues. The 2014 ALOT program will be held in central Illinois.



Pictured here (left to right) are John Mitchell; Randy Poskin, District 6 IAA Director; Paige Heinke; Troy Uphoff, District 11 IAA Director; Paul Beuth; and Michael Lang.

BREAKFAST HOSTS

Boone County Farm Bureau & Boone County Farm Bureau Foundation DAIRY BREAKFAST HOSTS:

1997 Ron & Sylvia Mueller
1998 Dale & Lisa Fitzgerald
1999 Joedy & Mary Ulrich
2000 Fred & Ann Hildebrandt
2002-2003 Boone County Fairgrounds
2004 Kevin & Julie Aves
2005 Brent Mueller
2006 Gregg & Patricia Borchardt
2007 Kevin & Julie Aves
2008 Boone County Fairgrounds
2009 James & Marilyn Turner
2010 Ward View Farm
2011 Boone County Fairgrounds
2012 Susie's Garden Patch
2013 Johnson Farms

Boone County Farm Bureau Foundation FARM BREAKFAST HOSTS

2014 Friendly Franseen Acres
2015 Friendly Franseen Acres
2016 Aves Dairy Farm
2017 Family Af-Ayr Farm
2018 Hildebrandt Farms
2019 Luckey Dairy Farms

SAVE THE DATE

ALL YOU CAN EAT PANCAKES!!

JUNE 20, 2020

FRIENDLY FRANSEEN ACRES 6:30-11 A.M.



ADULTS

\$8.00

CHILDREN 6-10

\$4.00

CHILDREN 5 AND UNDER

FREE

FOUNDATION HISTORY



BOARD OF DIRECTORS

Carl Dumoulin, Hampshire- President
 John Cleland, Capron- Vice President
 Brian Lyons, Rockford- Secretary
 Sid Moate, Rockford- Treasurer
 Ron Waldschmidt, Davis- Director
 Deb Walsh, Durand- Director



Back Row L to R: Sid Moate, John Cleland, Ron Waldschmidt
 Front Row L to R: Carl Dumoulin, Deb Walsh and Brian Lyons

The Winnebago County Farm Bureau Foundation was incorporated on November 8th, 1990. The Boone County Farm Bureau Foundation was officially incorporated on May 21, 2001. The Boone County Farm Bureau Foundation and Winnebago County Farm Bureau Foundation merged on January 1, 2015 and is now known as the Winnebago-Boone Farm Bureau Foundation.

The purpose of the Winnebago-Boone Farm Bureau Foundation is generally, to carry out charitable, scientific, literary and educational work. Specifically, by way of example and not by way of limitation:

- To encourage, promote and fund education and research designed to improve crop production, with special emphasis on soil and water conservation.
- To encourage, promote and fund education and research designed to improve livestock production with special emphasis on the control and eradication of livestock diseases.
- To provide scholarships for persons studying agriculture and education, association management, and leadership development.
- To promote, fund and conduct seminars and schools for educational and scientific leadership purposed in the field of agriculture and its related disciplines.
- To do all other things necessary and appropriate to effectuate these purposes. (The Winnebago-Boone Farm Bureau Foundation will not operate a business or vocational school.)

SCHOLARSHIP RECIPIENTS

BOONE COUNTY FARM BUREAU:

1990

Tom Walberg \$250
Tom McKenna \$250

1991

Brad Finnestad \$250
Tracy Meyers \$250

1992

Jeff Reininger \$250
Scot Sell \$250

1993

Amy Sell \$250

1994

Scott Lee \$250
Jonathon Clausing..... \$250

1995

Heather Sell \$250
Dawn Worley \$250

1996

Christine Silberhorn \$250

1997

Cheyenne Harbinson..... \$250

1998

Rebecca Silberhorn..... \$250
Angie Finnestad..... \$250

1999:

Matt Nobel..... \$250

2000:

Kristi Kenney \$250

2001:

Kristi Kenney \$250
Matthew Ellingson..... \$250
Mary Silberhorn \$250

2002:

Mary Silberhorn \$250
Scot Kastning..... \$250

BOONE COUNTY FARM BUREAU FOUNDATION:

2003:

Kristi Kenney \$250
Stephanie Stout \$250

2004:

Kristi Kenney \$400
Scott Kastning \$400
Stephanie Stout \$400

2005:

Nicole Stout..... \$400
Stephanie Stout \$400

2006:

Scott Kastning \$500
Nicole Stout..... \$500

2007:

Adam Boyce \$500

2008:

Bridgette Fidder \$500

2009:

Michael Hildebrandt..... \$1000
Brian Kastning \$1000

2010:

Garrett Anderson \$1000
Brian Kastning \$1000
Mary Kastning..... \$1000

2011:

Brian Kastning \$1000
Mary Kastning..... \$1000
Sarah Lee \$1000

2012:

Angela Hildebrandt \$1000
Sarah Lee \$1000
Savannah Peters \$1000
Nicole Zeien \$1000
Breanna Saso-Bye
Scholarship..... \$1000

2013:

Kevin Hildebrandt \$1000
Nicole Zeien \$1000

Angela Hildebrandt-Bill
Cleland Memorial \$1000

2014:

Emily Irwin \$1000
Nicole Zeien \$1000
Brianna Brockmann \$1000
Sarah Lee \$500
Ben Karlson \$500

WINNEBAGO CO FARM BUREAU FOUNDATION

1993:

Darcie Klinger \$500
 Brett Zimmerman \$500
 Mark Stahl \$500

1994:

Lisa Sheperd \$500
 William Strathman \$500

1995:

Darcie Klinger \$500
 Audrey Frampton \$500
 Lisa Sheperd \$500
 Adam Proctor \$500
 Richard Greene \$500

1996:

Darcie Klinger \$500
 Audrey Frampton \$500
 Jennifer Gale \$500
 Julianna Durst \$500
 Sandra Durst \$500
 Jeremiah Johnson \$500
 Brian Walsh \$500
 Kevin Sherman \$500
 Andrew Greenlee \$500

1997:

Julianna Durst \$500
 Sandra Durst \$500
 Andrew Ward \$500
 Kevin Sherman \$500
 Andrew Greenlee \$500
 Brian Walsh \$500
 Audrey Frampton \$500
 Richard Greene \$500
 David Johnson \$500
 Jennifer Gale \$500

1998:

Andrew Greenlee \$500
 Brian Walsh \$500
 Audrey Frampton \$500
 Megan Olsen \$500
 Thomas Adkins \$500
 James Hauser \$500

1999:

Trevor Ols0n \$500
 Brent Pollard \$500
 Audrey Frampton \$500
 Julliana Durst \$500

2000:

Julie Ann Eberle \$100
 Audrey Frampton \$300
 Jacob Hilton \$500
 Trevor Olson \$600
 Brent Pollard \$600

2001:

Trevor Olson \$1000
 Brent Pollard \$1000

2002:

Emily Hilton \$700
 Andrew Larson \$700
 Christine Leick \$700
 Christine Murphy \$700
 Annica Olson \$700
 Trevor Olson \$700
 Brent Pollard \$700

2003:

Emily Hilton \$1000
 Andrew Larson \$1000
 Christine Leick \$1000
 Christine Murphy \$1000
 Annica Olson \$800
 Christy Shroud \$800

2004:

Christine Leick \$1000
 Mike Leick \$1000
 John Mitchell \$1000
 Christine Murphy \$1000
 Annica Olson \$1000

2005:

Paul Beuth \$1000
 Emily Hilton \$1000
 Christine Leick \$1000
 Mike Leick \$1000
 Erin Lyons \$1000
 John Mitchell \$1000

2006:

Paul Beuth \$1000
 Mike Leick \$1000
 Steven Leick \$1000
 Erin Lyons \$1000
 John Mitchell \$1000

2007:

Jessica Bubert \$1000
 Mike Leick \$1000
 Emily Lyons \$1000
 Erin Lyons \$1000
 John Mitchell \$1000
 Monica Pell \$1000
 Lauren Williams \$1000

2008:

Jessica Bubert \$1000
 Brian Edwards \$1000
 Teke Heinschel \$1000
 Danielle Hill \$1000
 Michael Lang \$1000
 Emily Lyons \$1000
 Erin Lyons \$1000
 Monica Pell \$1000
 Clay Sohner \$1000
 Lauren Williams \$1000

2009:

Jessica Bubert \$800
 Brian Edwards \$800
 Teke Heinschel \$800
 Danielle Hill \$800
 Michael Lang \$800
 Emily Lyons \$800
 Monica Pell \$800
 Clay Sohner \$800
 Jennifer Wakeley \$800
 Lauren Williams \$800

2010:

Jessica Bubert \$1000
 Lucus Bybee \$1000
 Brian Edwards \$1000
 Michael Lang \$1000
 Emily Lyons \$1000
 Michael Murphy \$1000
 David Strathman \$1000
 Jennifer Wakeley \$1000

2011:

Kary Babb \$1000
 Lucus Bybee \$1000
 Chas Cross \$1000
 Cohen Hill \$1000
 Michael Lang \$1000
 Michael Murphy \$1000
 Bob Sweet \$1000
 Holly Wakeley \$1000

2012:

Kary Babb \$1000
 Lucus Bybee \$1000
 Austin Gottman \$1000
 Nikole Steffenhagen \$1000
 Holly Wakeley \$1000

2013:

Kary Babb \$1000
 Chas Cross \$1000
 Austin Gottman \$1000
 Cohen Hill \$1000
 Michael Murphy \$1000
 Jon Smith \$1000
 Nikole Steffenhagen \$1000
 Mark Vormezeele \$1000

2014:

Colton Asche \$1200
 Cassandra Baird \$1200
 Steven Mitchell \$1200
 Kelsi Steffenhagen \$1200
 Nikole Steffenhagen \$1200
 Mark Vormezeele \$1200

SCHOLARSHIP RECIPIENTS

2015:

Colton Asche \$1000
Cassandra Baird \$1000
Kyle Bates \$1000
Emily Irwin \$1000
Kelsi Steffenhagen \$1000
Mark Vormezeele \$1000
Nicole Zeien \$1000

2016:

Colton Asche \$1000
Cassandra Baird \$1000
Angela Hildebrandt \$1000
Ray Hildebrandt \$1000
Matt Lyons \$1000

2017:

Colton Asche \$1000
Cassandra Baird \$1000
Austin Brockmann \$1000

Brianna Brockmann \$1000
Scott Cleland \$1000
Ray Hildebrandt \$1000
Brock Irwin \$1000
Emily Irwin \$1000
Alicia Limones \$1000
Julie Mitchell \$1000

2018:

Kaitlin Asche \$1500
Austin Brockmann \$1500
Scott Cleland \$1500
Ray Hildebrandt \$1500
Brock Irwin \$1500
Alicia Limones \$1500

2019:

Kaitlin Asche \$1500
Rebecca Baird \$1500
Holly Black \$1500

Austin Brockmann \$1500
Daniel Daly \$1500
Genevieve Ellingson \$1500
Ray Hildebrandt \$1500
Brock Irwin \$1500
Travis Jacobs \$1500
Alicia Limones \$1500
Alexis Sell \$1500
Abby Stevens \$1500



1991 Boone County Farm Bureau Scholarship Recipients-
Brad Finnestad & Tracy Meyers



Emily Lyons

“The Winnebago County Farm Bureau Foundation Scholarship was invaluable in defraying the cost of tuition and fees by allowing me to focus on my education and follow my passion to become an effective advocate for the food and agricultural industry.”

**- Emily Lyons,
of Rockford, IL
Attorney**

BOONE



1920-1926
J.C. Kline
Farm Advisor



1927-1939
Edward C. Foley
Farm Advisor



1953-1954
Ralph V. Johnson
Farm Advisor



1954
Raymond Barkau
Organization Director



1956-1986
Kenneth Harris
Organization Director
FB Manager (1977)



1989-1991
Tom Verry
FB Manager



1991-1993
Deanna (McCulloh)
Bloomberg
FB Manager



1993-1995
Jennifer Beard
FB Manager



1995-1996
Robb Mohr
FB Manager



1996-1999
Melissa (Blythe)
Rhode
FB Manager



1999-2000
Jane Bickelhaupt
FB Manager



2000-2002
Rebecca Champion
FB Manager



2002-2012
Ann Marie
(Zimmerman) Cain
FB Manager

Not Pictured: D.M. Chalcraft 1940-1952, Mike Hodge 1987-1989, Scott Christianson 1995,

WINNEBAGO

*Not Pictured: Charles Keltner 1920-1937,
H. Brunnemeyer 1937-1950*



1948-1967
Gordon Fox
Executive Secretary



1967-1992
Del Tedrick
Executive Secretary/
FB Manager



1992-2012
Roger Christin, FBCM
FB Manager



2012-2012
Roger Christin, FBCM
FB Manager



2012-Present
Ann Marie Cain, FBCM
FB Manager

WINNEBAGO-BOONE

OFFICE STAFF



Pictured (Left to Right):

Sandy Mitchell, Membership Administrator and Accounting

Tammy Wakeley, Administrative Assistant

Sheri Lee, Administrative Assistant



AG LITERACY STAFF

Pictured (top) Left to Right:

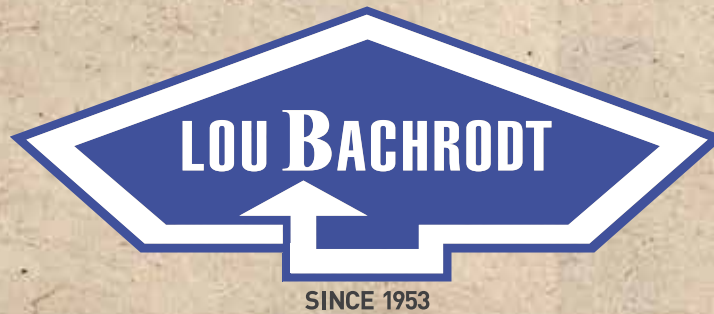
Diane Cleland, Ag Literacy Coordinator, **Holly Wakeley**, Educator, **Christy Youtzy**, Educator, and **Doni Nelson**, Educator

Pictured (bottom):

Katie Rudy, Educator



SPONSORED BY



**YOUR HOMETOWN
CHEVY DEALERS**



*Your Boone and Winnebago County Pioneer
Seeds Sales Representatives*

