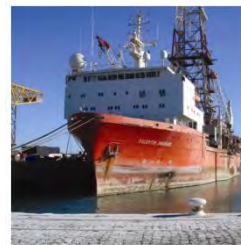




Innovative Solutions For Challenging Times



INTRODUCTION

Established 1988, Aberdeen, Scotland

Ex-drilling contractor personnel

Specialising in Mobile Offshore Drilling Units

Projects from crown to keel

Multi-discipline engineering

Custom equipment supply

Life extension & refurbishment

Full turnkey project management

Single source solution for small offshore projects

LOCATIONS

OFFICES

Aberdeen, Scotland (Head Office)
Shipleigh, England (Engineering)
Houston, USA (Light Manufacture and Service)
Perth, Australia
Singapore

MANUFACTURING (subcontract)

UK (various)
US (various)
Singapore (Megaway, 25+ years)
South Africa (Belmet, 10+ years)
Brazil (Plimsoll, new 2015)

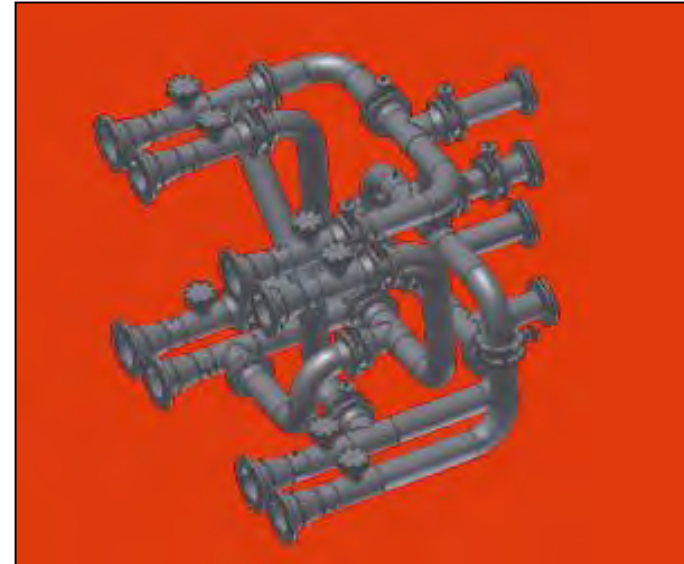
AGENTS

Brazil (10 years)
Korea (5 Years)
China (1 year)

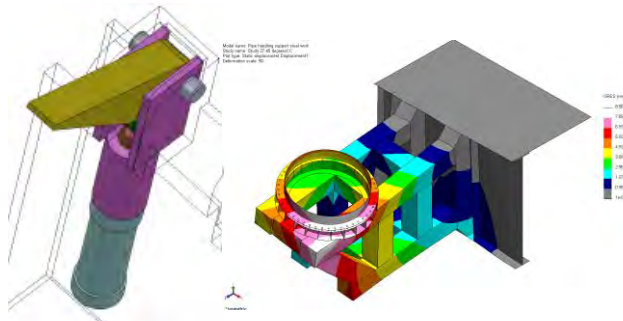
CONSULTING ENGINEERS CUSTOM MECHANICAL EQUIPMENT



**Structural
Mechanical
Piping
Hydraulic
+**

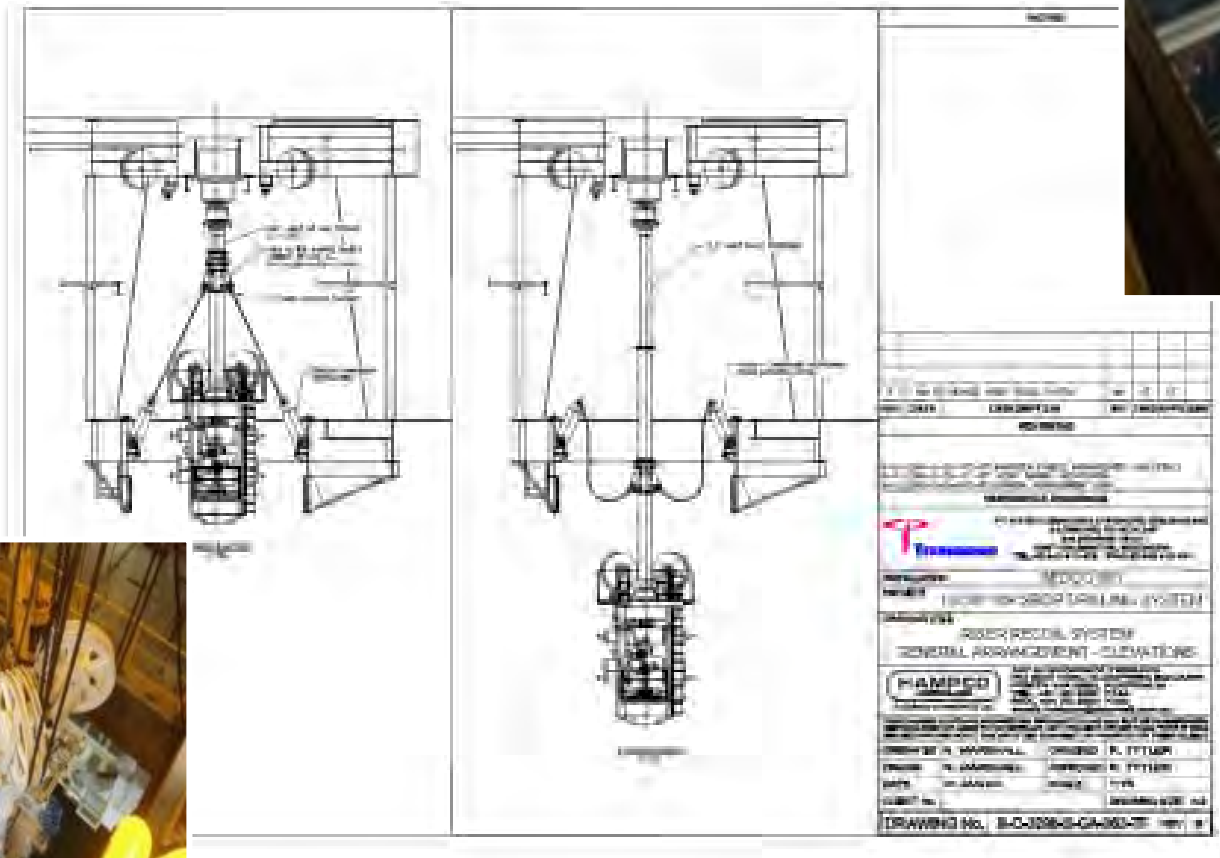


Interfacing, Installation & Commissioning



HAMP**CO**

SURFACE BOP



DRILLSHIP DEEPWATER UPGRADE

**Engineering, DNV approvals, procurement
and construction supervision of:**

Tensioner Upgrade

New & Relocated Cranes

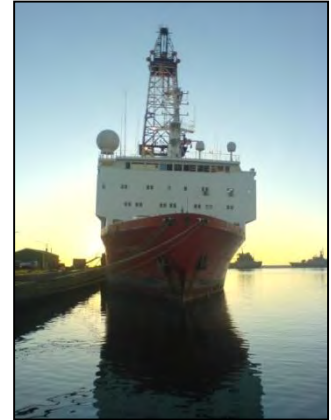
Riser Storage and Handling Upgrade

Telescopic Flare Boom

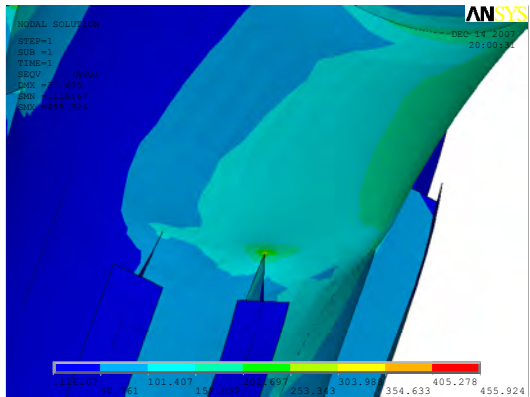
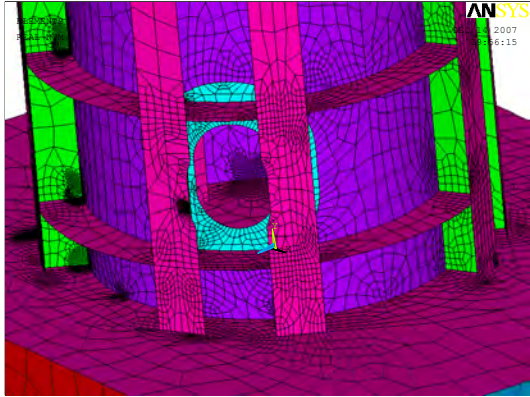
ROV Moonpool

Fingerboards

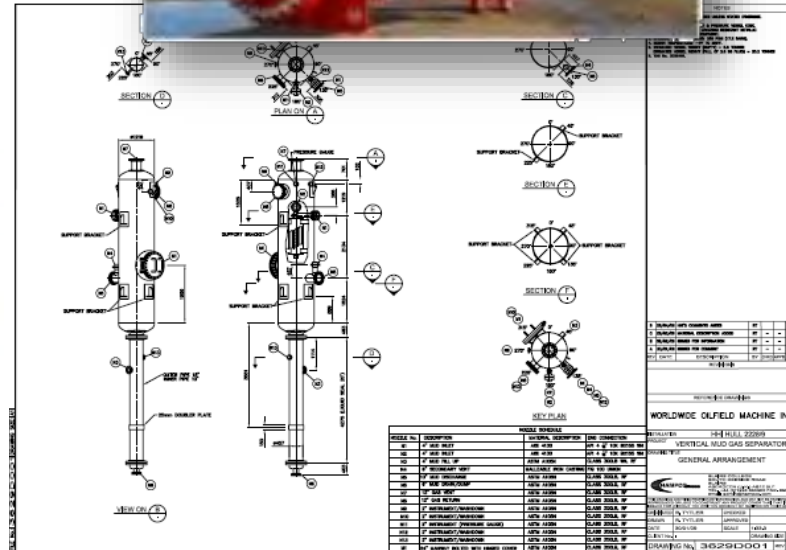
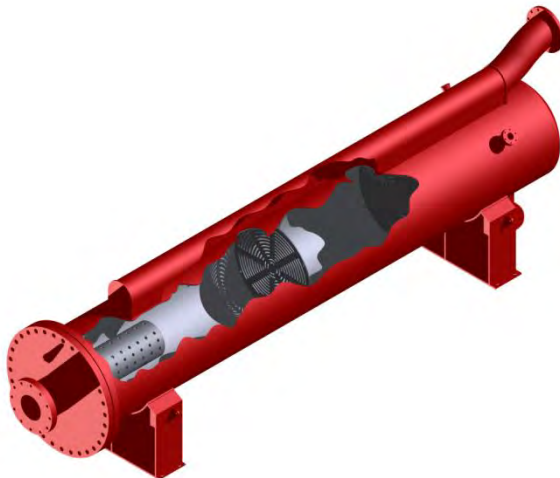
Miscellaneous



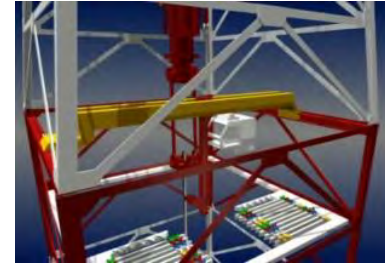
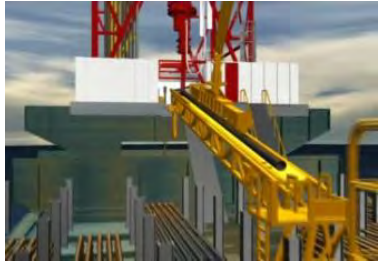
CRANE INSTALLATION



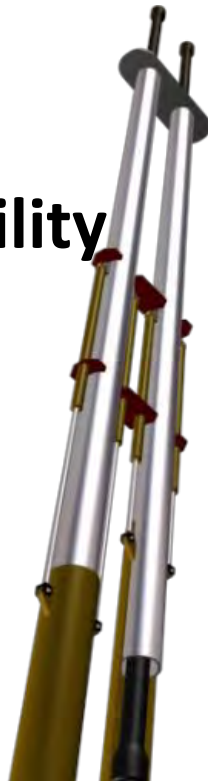
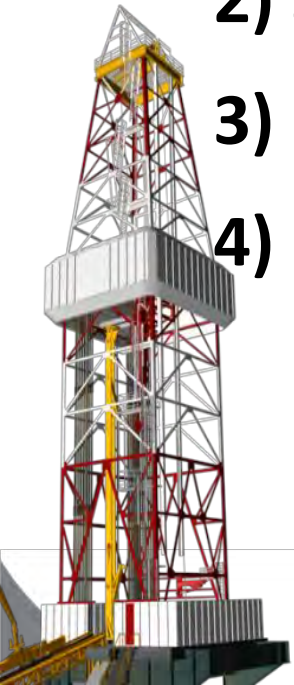
MUD GAS SEPARATORS & FLOWLINE DEGASSERS



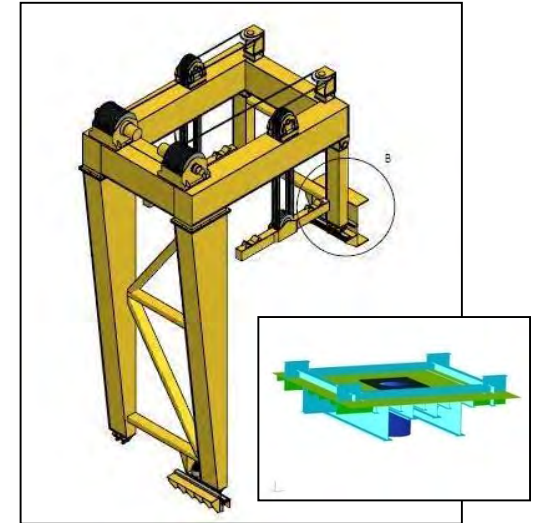
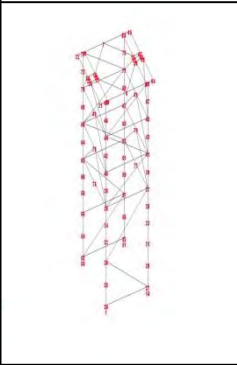
CUSTOM EQUIPMENT



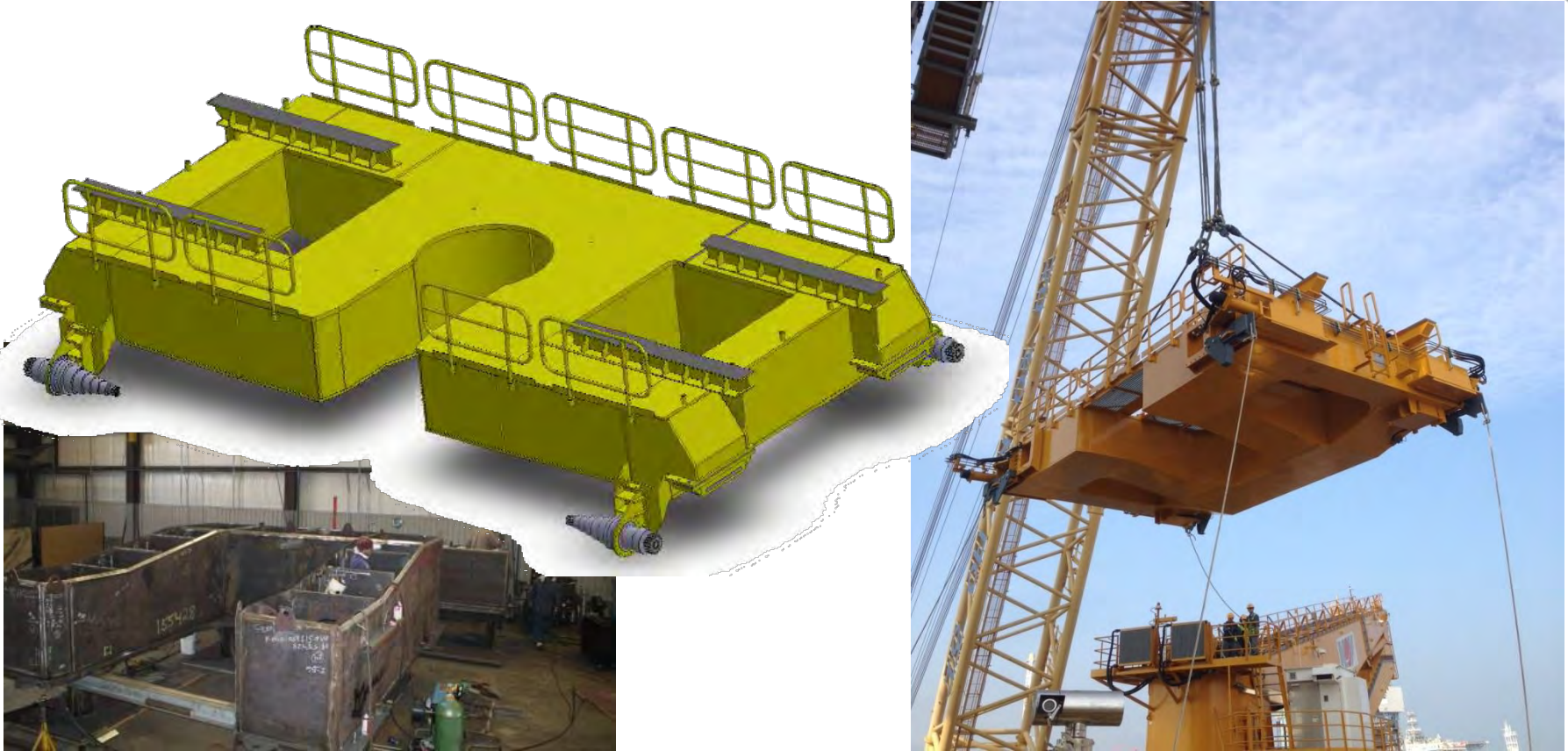
- 1) Tailored to the problem and the interfaces
- 2) Specified and designed with the customer
- 3) Focus on simplicity, robustness & maintainability
- 4) Full interfacing and installation capability



BOP HANDLING



Multi-Purpose Cart (1)-ABS



**Dual Gradient Drilling (DGD) Mud Lift Pump and
BOP Handling + 1000mT Riser Hang-Off**

HAMP 

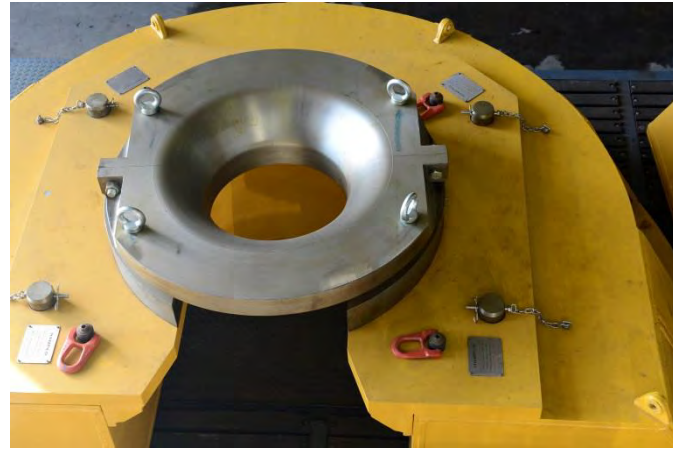
Multi-Purpose Cart (2)-DNV



Industry First: Factory load tested to 1100mT

HAMPCO

RISER HANG OFF



Proprietary Design

HAMP  **CO**

BOP LIFTING TOOL



**Concept to
Delivery in
4 Months**

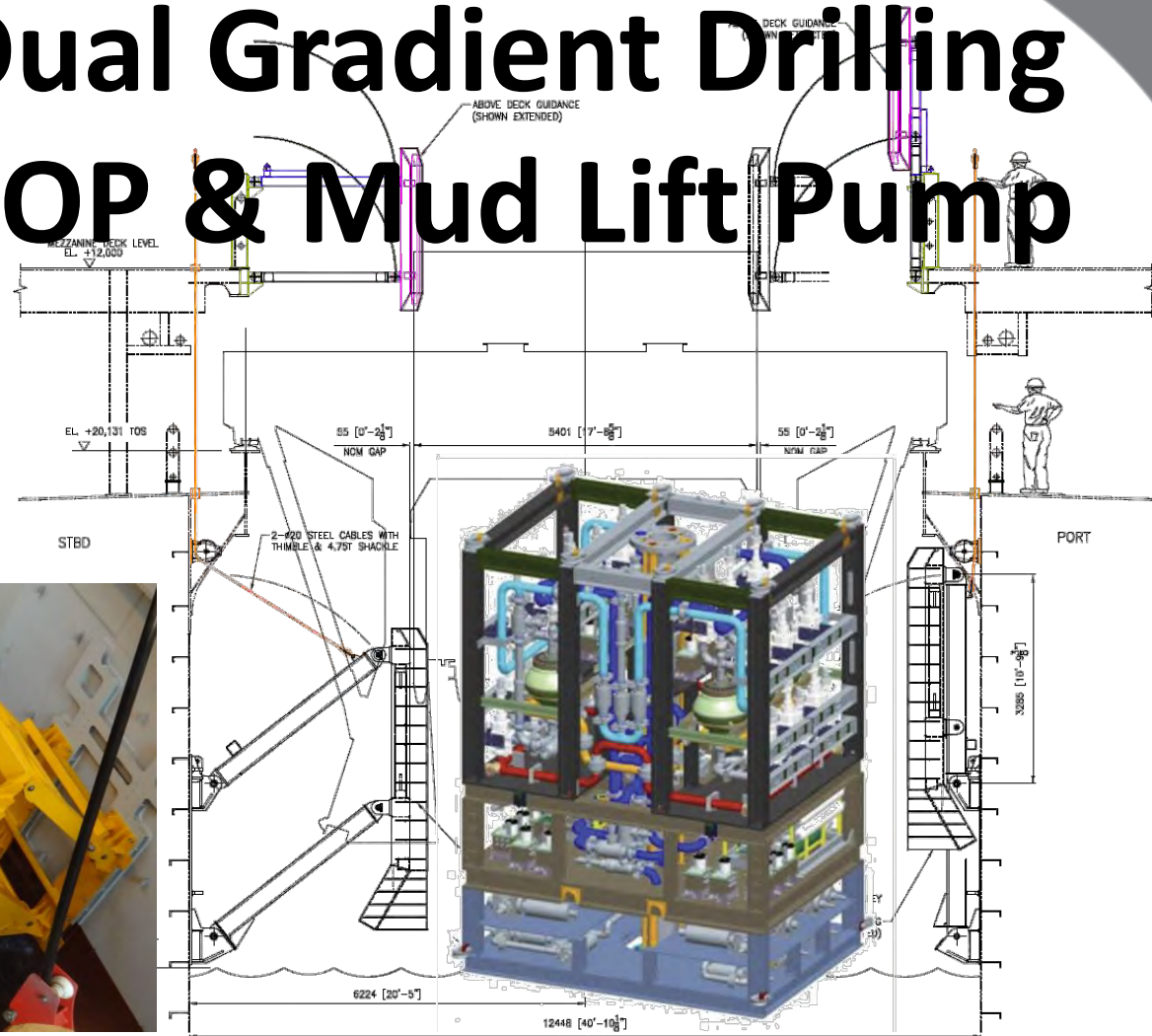


HAMP **CO**

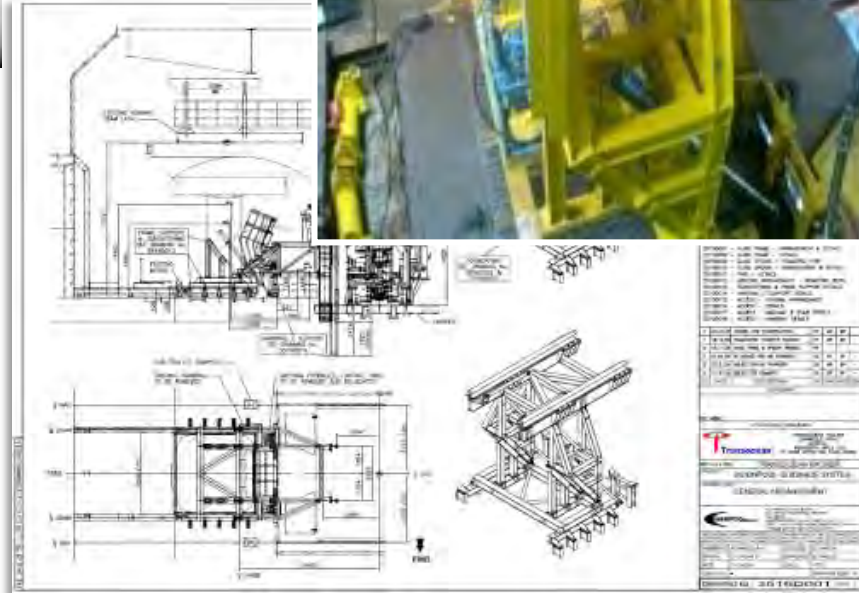
MOONPOOL GUIDANCE



Dual Gradient Drilling BOP & Mud Lift Pump

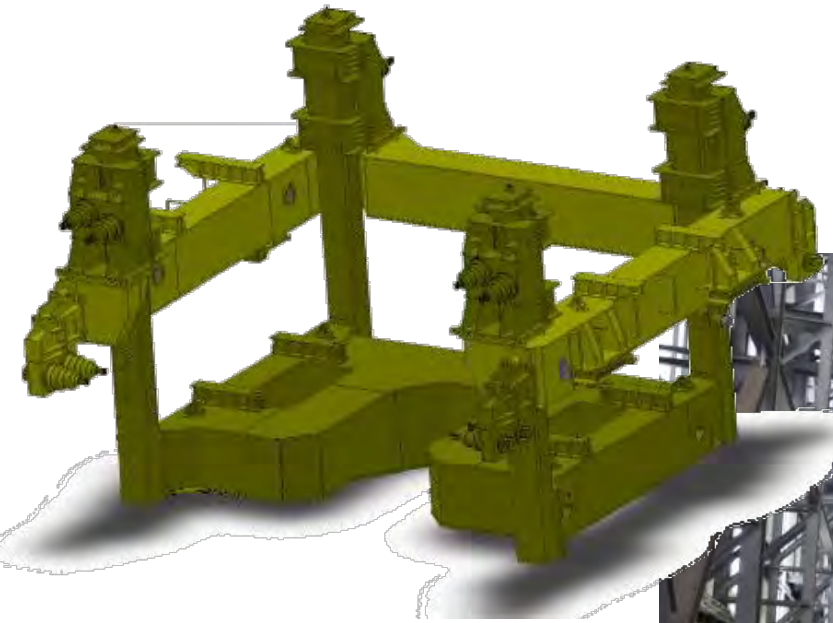


TREE HANDLING



TREE HANDLING

Elevating Tree Transporter



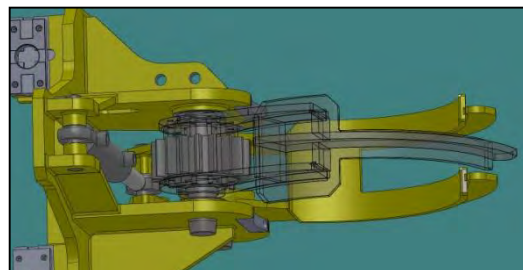
**1000mT
Riser Hang-Off**



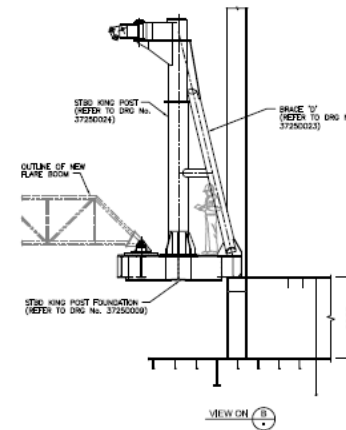
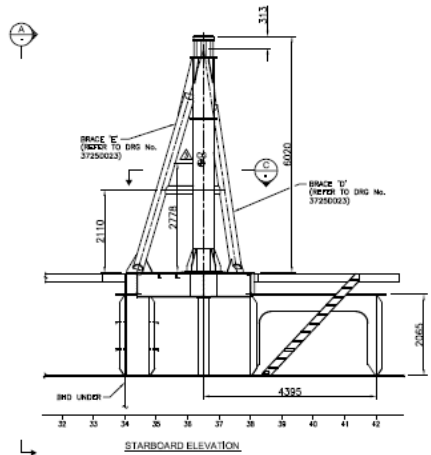
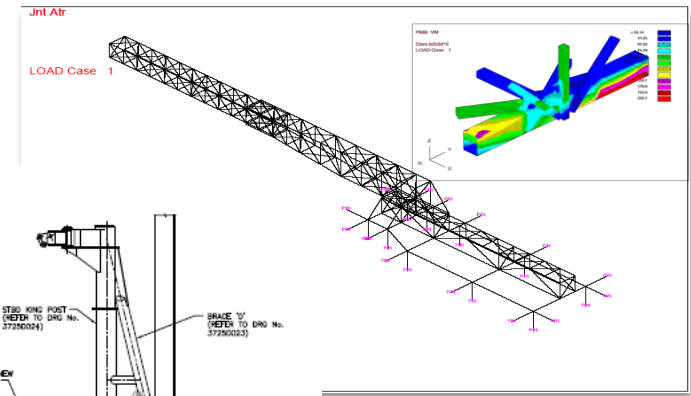
DRILL FLOOR MANIPULATOR ARM



HAMP**CO**

[illegible]

[illegible]



FLARE BOOMS



**Inclined,
Slewing**



Telescopic



Standard, King Post

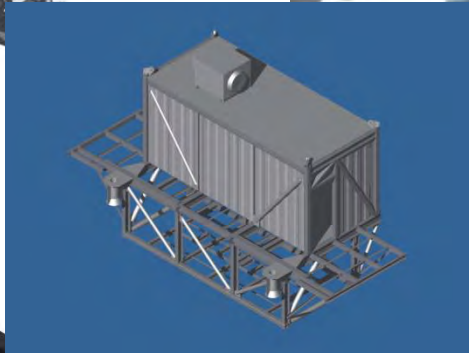
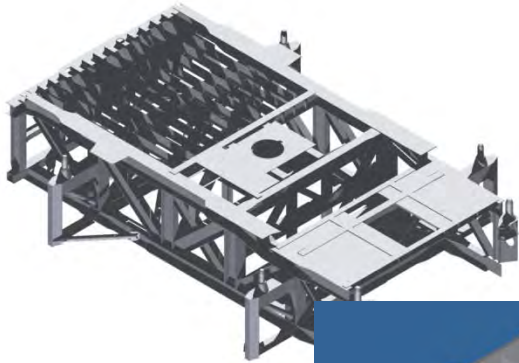


FLARE BOOMS

Brasil Pre-Salt Development
High Ship Dynamics
ABS CDS Certification



SETR (Self Erecting Tender Rig)



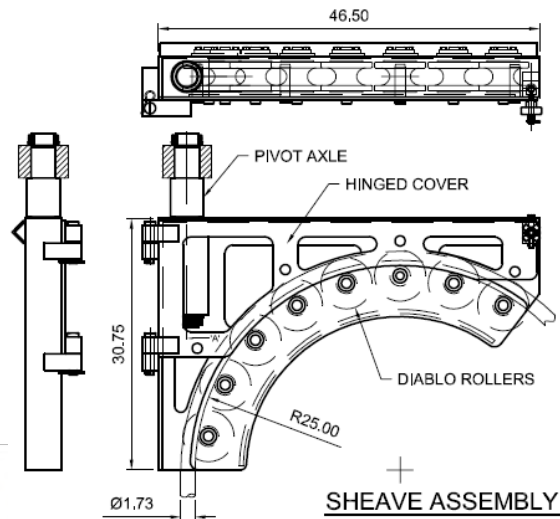
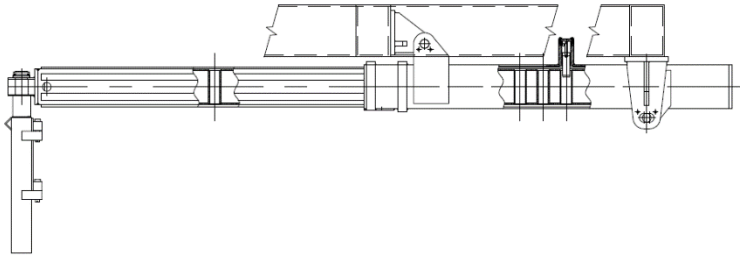
Design + Yard Construction Team

HAMPCO

SETR Skidding System



MUX Hose Management System



Coiled Tubing Lift Frame

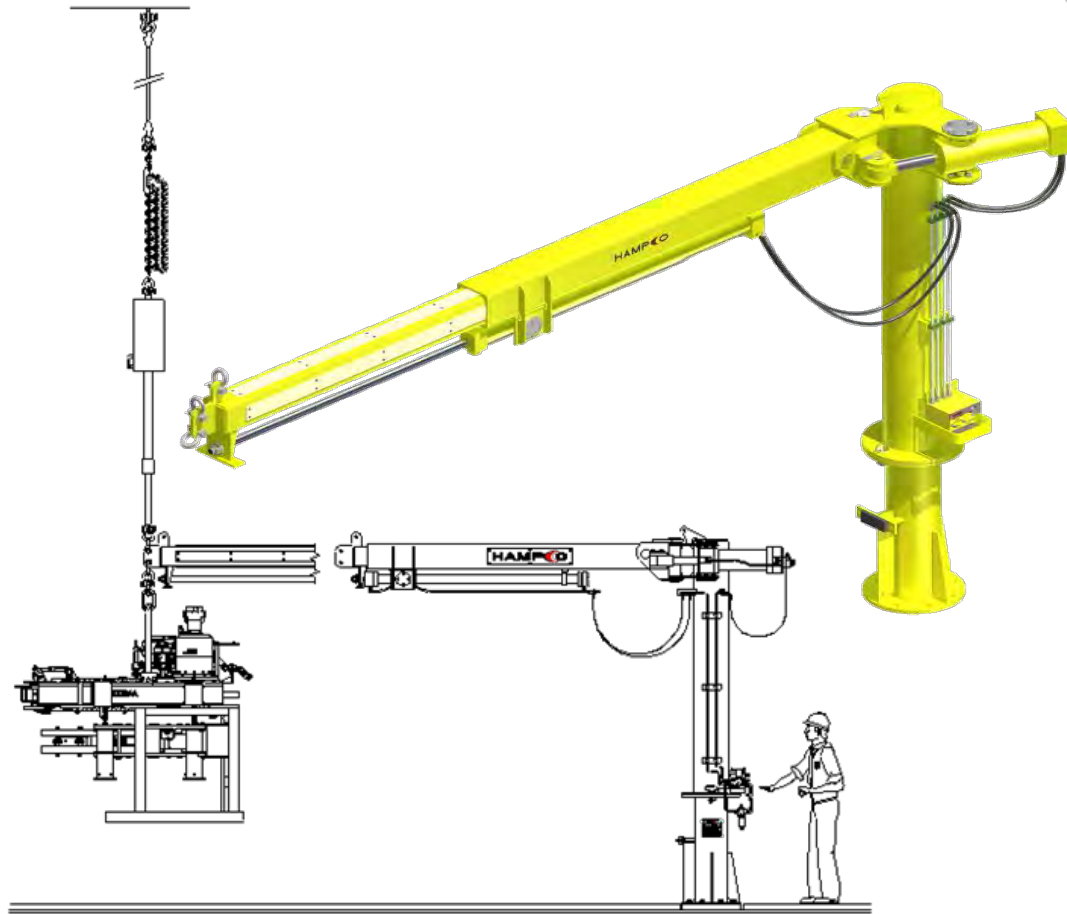


HAMPCO

Casing Tong Positioning Arm

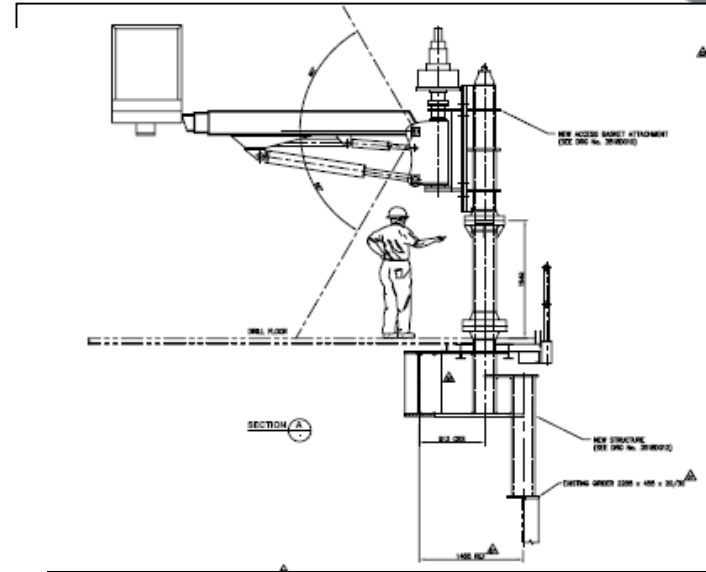
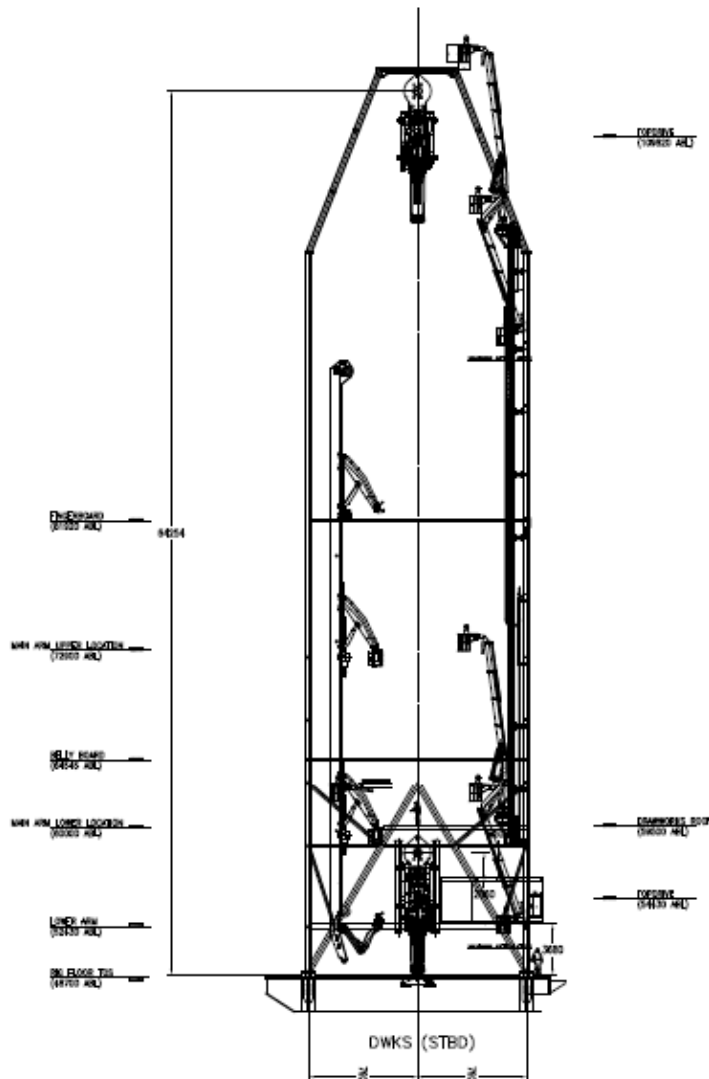


Manufactured in Brazil

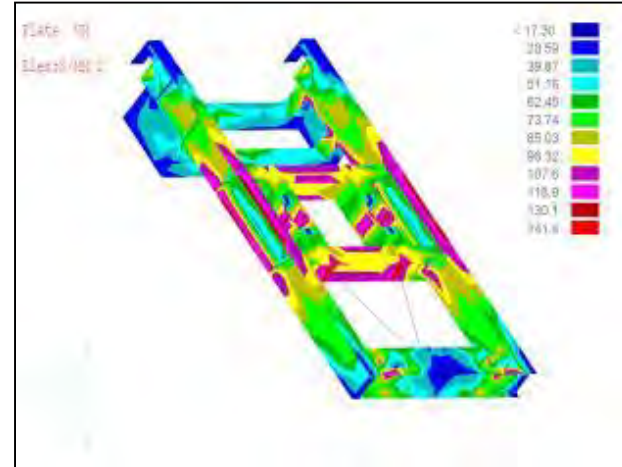


HAMPCO

ACCESS SYSTEMS



UPGRADE & LIFE EXTENSION



UPGRADE & LIFE EXTENSION



HAMP**CO**

Manualization™

Equipment supply philosophy to:

- Minimise unnecessary complexity
- Increase reliability
- Simplify maintenance
- Reduce dependence on OEMs
- **REDUCE COST OF OWNERSHIP**

How is it Achieved?

- **Back to basics wherever possible**
- **Adopt tried and tested techniques and assemblies**
- **Use recognized and readily-available components to avoid “specials” wherever possible**
- **Focus on ease of troubleshooting and maintenance**
- **Involve the customer in the design review process**
- **Offer the customer choice in components**
- **Disclose origin and part numbers of purchased parts**
- **Disclose materials of manufacture**
- **Give the customer the technical information they need to service their equipment cost-effectively**

SUMMARY

Consulting Engineers, offshore, drilling & marine

Suppliers of innovative custom equipment

International footprint

Fast-track delivery

Cost-effective solutions

Customer support