

ANNUAL MEMBERSHIP MEETING

\$7 Adults

Kids 12 &
Younger
Free

Meeting Held At:
MOWER COUNTY
SENIOR CENTER

Piggy Blues
Catering

Tuesday, April 16th, 2019
6:00 PM Dinner & Meeting Follows

HURRY TO GET YOUR TICKETS BEFORE THE MEETING
Tickets are available at the credit union|

GRAND PRIZE: 49-Inch Smart TV
Many more prizes plus giveaways for everyone attending!

Use the equity in your home to
get the cash you need.

Improve your home, consolidate your debt, finance a
vacation or your education. You decide!



Home Equity and Refinance Solutions

We now offer a variety of solutions to help you use the equity in your home to get the cash you need. Our home solutions offer you convenient access including life-of-loan servicing right here at your local credit union.

Home Equity Line of Credit
Home Equity Loan
Home Advantage Refinance

*Low Closing Costs
Fixed and Variable Rates
Life of Loan Servicing
Variety of Repayment Terms*

Any Home Equity over
\$10,000 will receive a \$100
Gift Card at closing.

Put that extra \$100 towards
anything you want!
Apply by June 30, 2019

Set up an appointment with Stephanie at (507) 437-6360 or
contact via e-mail at mcecu@mowercountynecu.org to start
your request today.

Mower County ECU NMLS #1154437, Stephanie Riles NMLS #651040. Loans subject to credit approval.



Mower County Employees Credit Union
1202 N. Main Street, Austin, MN 55912
www.mowercountynecu.org (507) 437-6360



NMLS #1154437

Monday – Friday 11 AM to 4 PM

Extended Thursday Hours in Summer

Breeze into Spring with Low Vehicle Loan Rates



Used and New Vehicle Loan Rates Spring Special

New Vehicle Rates As Low As 3.00% APR
Used Vehicle Rates As Low As 3.50% APR

Apply Online Under Rates/Application

www.mowercountyequ.org

Speak with a Member Service Representative at 437-6360

All members who close a new or used vehicle loan between April 1st and June 30th will be entered to win a Spring Gift Basket

Apply now to purchase a newer vehicle or refinance a loan from an external source to *your credit union!*

All loans subject to credit approval. Annual Percentage Rate (APR) based on credit and auto-payment.

Want To Grow Your Savings?

We're With You!

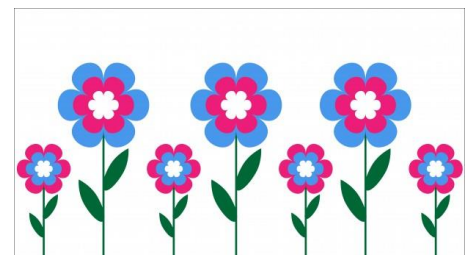
Share Certificate Special

18-month **2.58% APY**

Offer available for non-MCECU deposit only

Don't Miss Out
Special Ends April 30th

Want even more? Become a Golden Checking Member and receive an additional 0.10% bonus on this rate!



NEW GOLDEN CHECKING MEMBERS WILL RECEIVE A FREE GIFT WHEN ESTABLISHING THEIR GOLDEN ACCOUNT



Mower County Employees Credit Union
1202 N. Main Street, Austin, MN 55912
www.mowercountyequ.org (507) 437-6360



NMLS #1154437

Monday – Friday 11 AM to 4 PM

Extended Thursday Hours in Summer