

**Rabbit Anti-Melanoma/gp100/PMEL17/SILV Recombinant [PMEL/1825R]: RM0294, RM0294RTU7**

**Intended Use:** For Research Use Only

**Description:** Melanoma/gp100/PMEL17/SILV is a melanocyte-specific type I transmembrane glycoprotein. It is enriched in melanosomes, which are the melanin-producing organelles in melanocytes, and plays an essential role in the structural organization of premelanosomes. PMEL17 / GP100 is involved in generating internal matrix fibers that define the transition from stage I to stage II melanosomes. PMEL17 expression is melanocytic-cell-lineage-restricted and with significant transcript levels in all stages of melanoma progression, including early and amelanotic melanoma lesions. This antibody specifically labels melanoma cells. It also stains Angiomyolipoma (PEComa).

**Specifications:**

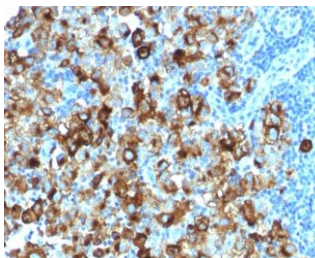
Clone: PMEL/1825R  
 Source: Rabbit  
 Isotype: IgG  
 Reactivity: Human  
 Localization: Cytoplasm  
 Formulation: Antibody in PBS pH7.4, containing BSA and  $\leq 0.09\%$  sodium azide (NaN<sub>3</sub>)  
 Storage: Store at 2°- 8°C  
 Applications: IHC  
 Package:

Description	Catalog No.	Size
Melanoma/gp100/PMEL17/SILV Recombinant Concentrated	RM0294	1 ml
Melanoma/gp100/PMEL17/SILV Recombinant Prediluted	RM0294RTU7	7 ml

**IHC Procedure\*:**

Positive Control Tissue: Melanoma  
 Concentrated Dilution: 50-200  
 Pretreatment: Tris EDTA pH9.0, 15 minutes using Pressure Cooker, or 30-60 minutes using water bath at 95°-99°C  
 Incubation Time and Temp: 30-60 minutes @ RT  
 Detection: Refer to the detection system manual

\* Result should be confirmed by an established diagnostic procedure.



FFPE human melanoma stained with anti-Melanoma gp100 using DAB

**References:**

1. Hepatic epithelioid angiomyolipoma is a rare and potentially severe but treatable tumor: A report of three cases and review of the literature. Liu W, et al. *Oncol Lett* 11:3669-3675, 2016.
2. Surgical monotherapy may be a suitable therapeutic strategy for advanced collecting (Bellini) duct carcinoma: A case report and literature review. Zhu L et al. *Exp Ther Med* 12:1181-1184, 2016.
3. STX13 regulates cargo delivery from recycling endosomes during melanosome biogenesis. Jani RA, et al. *J Cell Sci* 128:3263-76, 2015.
4. Punctate LC3B expression is a common feature of solid tumors and associated with proliferation, metastasis, and poor outcome. Lazova R, et al. *Clin Cancer Res* 18:370-9, 2012.

Doc. 100-RM0294  
Rev. A