

Columbiana-Mahoning-Trumbull Cattlemen's Association, Inc.

May 2015

www.cmtcattlemen.com

Dear Fellow Cattlemen/Cattlegirls,

Here we are. Finally it is getting to be springtime. The first week of May and the leaves are just getting on the trees and we are getting some good grass growing. I don't know what you all think, but it was a long, cold winter and I am not going to complain when it gets hot this summer! I was moving some cows the other day and am sure the ground is dryer now than it was at this time all last year. Is it our turn to have a dry year?

Reports from spring feeder calf sales have been very strong along with the breeding bull sales which have hit all-time price highs.

Janet Zuga and our CMTCA Beef Ambassadors are gearing up to start their summer schedule of promoting Beef, CMTCA, OCA, and NCBA. They will be setting up at grocery stores and the first fair will be Trumbull County in July.

At the last board meeting we have been working on plans for improvements to our Cattle Blast and Carcass Class program with CMTCA logo banners and signs for use in photographs of winners and promotional items. Two things we need for sure is more cattle consigned to the sale and more sponsors. This is how we pay for putting on the Cattle Blast show, so please help if you can.

Summer picnic...We need a farm to host the event. Any volunteers? Please contact me or any board member if you would like to have it at your place.

On June 30th we will be having an educational meeting sponsored by OCA and Multimin USA at the American Legion in Leetonia. There will be a steak dinner and RSVP will be required. For more information on this meeting see the ad in this newsletter.

Eastern Ohio Grazing Counsel will be having a pasture walk on May 28th at 6 p.m. This will be located at the Henry Kenney Farm 1231 St. Rt.258 SW Newcomerstown, Ohio 43832. Meeting topics are spring development, winter feeding areas, access road installation and forage identification.

That's all I have for this month. Happy Haymaking!

Mark Kohler- 2015 CMTCA President

2015 OFFICERS

President

Mark Kohler
330-771-7022

Vice President

Brian Spencer
330-501-1987

Past President

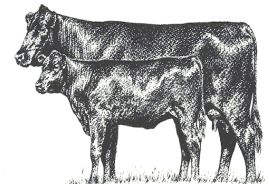
Paul Wetzl
330-534-4332

Secretary

Chad Bailey
330-853-7966

Treasurer

Pete Conkle
330-831-0006



Upcoming Dates:

Grazing Council: May 28
OCA: June 30
Trumbull County Fair: July 14-19
Lisbon Fair: Aug. 3-9

Inside this issue:

Ambassador News

2015 CMTCA Ambassadors

As the CMTCA Ambassadors, these girls are here to help and assist the association and its members. If you have an event (PR, open house, sale, etc.) or know of an organization that could use the service of these ambassadors, please get in touch with Janet Zuga at: zugafarms@embarqmail.com or [330-469-1061](tel:330-469-1061).

Congratulations, 2015 Beef Ambassadors!!!!

Picture one: Marly Ziegler, Madie Murray, Erika Zuga, Claudia Criss, Betty Richey, Megan Drake, Emily McDonald



Ambassador Blog:

During their first meeting, after reviewing all the suggestions given at the banquet, our mascot was officially named.... Hank- the Tank!

To promote the CMTCA and beef industry, the ambassadors are planning a beef awareness event at the Save A Lot on Route 224. At this time we are looking at July 3. The ambassadors will be selling raffle tickets for two \$50.00 store gift certificates to be used toward the purchase of beef products from the Save A Lot's meat department. Tickets will be \$1 each or 6 for \$5.00.

Please support your beef ambassadors by either stopping by the event and/or purchasing your raffle ticket in advance for a chance to win a \$50.00 gift certificate. Drawing to be held at the end of the event. You do not need to be present to win!!! Please contact Janet or any of the ambassadors for tickets.

Thank you for your support.



Meet Hank- the Tank

2015 Board of Directors

Pete Conkle
Todd Miller
Chad Bailey
Ben Campbell
Fred Criss
Duane Nickell
Brady Baker
Chad Raber
Rich Boyd
Gary Coppersmith: Dairy



Royalty

Beef Ambassadors:

Erica Zuga,
Trumbull County

Claudia Criss,
Mahoning County

Betty Richey,
Columbiana County

Jr. Ambassadors:

*Megan Drake
Madie Murray*

Jr. Ambassadors Alternates:

*Marly Ziegler
Emily McDonald*

Ambassador Coordinator:

Janet Zuga
zugafarms@embarqmail.com

2015 Columbiana County Jr. Fair Market Steer Show Sponsorship

The Columbiana County Jr. Fair Beef Committee would like to thank you for Sponsoring Classes and Awards for our Market Steer Show & Showmanship Classes that takes place at the Columbiana County Fair on August 5, 2015.

All your donations go directly to the 4H kids participating with a market steer project and every participant will be giving something along with all 1st & 2nd place class award winners. We are looking for 20 Award Sponsorships to sponsor all of the classes for the Market Show and Showmanship. We are asking for a donation of \$50.00 per sponsorship. Your name will be advertised in our steer show program and sale catalog and also announce numerous times during the show. We appreciate you for supporting the kids who participate in the Columbiana County Jr. Fair.

If you do want to Sponsor an Award, please call or email Jay Kitzmiller, so that we can get all of your information for the programs and we will send you a receipt for your donation.

Please make check out to:
Columbiana County Jr. Fair Beef & Steer Club

And mail to: Jay Kitzmiller, Treasurer
23892 Georgetown Rd.
Homeworth, OH 44634
330-353-3555
jay@growinggood.com

Thank you,

Jay Kitzmiller, Treasurer

Jamie Garwood-Stacy:
Newsletter Coordinator

news@cmtcattlemen.com,

stacyranch@yahoo.com,

Jamie.stacy@ccctc.k12.oh.us,

330-398-4077

Club Calf Sale and Show:
Rich Boyd, Todd Miller
Brian Spencer, and Chad
Raber

CMTCA News and Events

1) May 28th at 6 p.m. Eastern Ohio Grazing Counsel will be having a pasture walk on this will be located at the Henry Kenney Farm 1231 St. Rt.258 SW Newcomerstown, Ohio 43832. Meeting topics are spring development, winter feeding areas, access road installation and forage identification.

RSVP to the Carrollton SWCD office (330) 627-9852 by May 22nd for the pasture walk.



2) **Multimin USA** will be sponsoring a steak dinner on **June 30, 2015** at the American Legion Post 131: **540 Main Street, Leetonia, Ohio 44431**. The meeting will begin at **6:00 pm** with a veterinarian speaking to us on the Multimin product and any health concerns producers may have in their herd. After dinner a representative from the Ohio Cattlemen's Association will give the group an update on policy, events, and the membership benefits. This should a great meeting to educate yourself and meet likeminded people in the beef industry.

The event is limited to the first 75 people and reservations are required by June 20th.

If you would like to join us, you need to RSVP to

Pete Conkle by calling at (330) 831-0006 or email: pconkle@frontier.com

A Publication of:
OSU Extension - Fairfield County
831 College Ave., Suite D, Lancaster, OH 43130
and the

OSU Extension BEEF Team

You may subscribe to the weekly Ohio BEEF Cattle letter by sending an e-mail to smith.263@osu.edu
Previous issues of the BEEF Cattle letter

Issue # 934

May 6, 2015

Beef Demand Strength Update and Implications . . . - Glynn T. Tonsor, Associate Professor, Department of Agricultural Economics, Kansas State University

The combination of substantial \$/cwt changes in cattle market prices since the start of this year coupled with the sheer amount of money at stake in each managerial and marketing decision continues to magnify producer interest in current information regarding supply and demand fundamentals. While a wealth of information is available on current (and upcoming) meat and livestock supplies (e.g. reports including Cattle Inventory, Cattle on Feed, and Cold Storage), there comparatively is much less information available regarding demand strength. Nonetheless, nearly all economists highlight it takes an understanding of BOTH supply and demand to appreciate the current and possible future market situation.

One key source of retail beef demand information is provided by quarterly demand indices maintained at Kansas State University. While more details are available online, the KSU demand indices can best be succinctly described as comparing expected beef prices with realized prices to identify if demand has strengthened or weakened. If the realized price is higher (lower) than expected given changes in beef volume, then we have evidence of demand improving (declining). This comparison of expected and realized prices relies upon information from BLS regarding retail meat prices, USDA estimating per capita beef disappearance, and the academic literature indicating that beef prices increase (decrease) 0.542% for each 1.0% decrease (increase) in quantity available.

In the first quarter of 2015, beef prices increased by 13.48% and per capita consumption increased slightly (+0.01%) compared to 2014 levels. While the change in consumption was small, it is imperative to note both prices and consumption volume increase ONLY if beef demand improves. That is, if demand was unchanged (or declining) a lower beef price would be necessary to facilitate purchase of the increased beef volume available. The KSU All Fresh Beef Demand (AFBD) index estimates this Q1.2015 demand increase was +15.5% which was the largest quarterly increase in the life of this series going back to 1990. In fact, the AFBD has increased in 18 of the most recent 19 quarters.

Implications of this demand improvement are best highlighted by two interpretive examples. The AFBD index was 80.3 in the first quarter of 2014 implying that retail beef prices were 19.7% lower than they would have been had beef demand been at its 1990 level. Fast forward to the most recent quarter and the AFBD index of 92.8 implies first quarter 2015 beef prices were only 7.2% lower than they would have been had beef demand been at its 1990 level.

Substantially closing the gap between current and past periods of demand strength is critical. As higher retail prices are realized, the derived demand increases throughout the industry from wholesale beef to seed stock producers leading to higher sales prices.

As the industry proceeds to likely continue the process of expanding the breeding herd and hence beef production, the recent period of substantial supply-side price support will at least partially subside in coming years. During this process, the ever-present but often overlooked role of beef demand strength will become increasingly clear. Join me in hoping for both ongoing beef demand strength and enhanced understanding of implications by industry stakeholders.

A Publication of:
OSU Extension - Fairfield County
831 College Ave., Suite D, Lancaster, OH 43130
and the
OSU Extension BEEF Team
Issue # 935
May 11, 2015

First Look at the 2015 Corn Crop - John Michael Riley, Extension Agricultural Economist, Department of Agricultural Economics, Mississippi State University

The United States Department of Agriculture's World Agriculture Outlook Board released their monthly World Agricultural Supply and Demand Estimates report (WASDE) today, May 12, 2015. The May report is always viewed with extreme importance since it relays USDA's first projections for summer crops -- using both subjective and objective information available at the time of the projection.

The 2015 corn crop is currently estimated to yield 166.8 bushels per acre, compared to last year's record yield of 171.0 bu/ac. USDA provided the following within the WASDE report with respect to their 2015 corn yield estimate:

"Projected [corn] yield [is] based on a weather adjusted trend model that assumes normal mid-May planting progress and summer weather. The trend yield is not adjusted for this year's rapid planting pace as more than 90 percent of yield variability is determined by July weather."

In previous years, the report has taken into account planting progress and current weather information, however these were not included for this year. Drs. Irwin, Good, and Sanders provide a comprehensive explanation of USDA yield estimates in their April 30, 2015 farmdoc daily commentary[1].

Based on the March Prospective Plantings report acreage estimate of 89.2 million corn acres, and taking into account a normal amount of acres that are not harvested, corn production is projected at 13.630 billion bushels. This would be 586 million bushels less than last year's record level of production, or a 4.1% decline from 2014. Corn consumption for the year is estimated to be 13.760 billion bushels. This is composed of 5.30 billion for feed and residual use, 5.20 billion for used for ethanol production, 1.36 billion for other industrial and seed use, and 1.90 billion to export markets.

Expected corn used for feed, which is the bulk of the "feed and residual" category, was increased 50 million bushels. Using some assumptions of a normal and current feeding process[2], the amount of corn needed to finish a typical feedlot calf is about 55 bushels. If 60% of the "feed and residual" corn is used to feed cattle in feedlots, then roughly 545,000 additional head will be fed during the corn marketing year (which runs from September through August, so not a calendar year). This of course supports the notion that expansion has been underway in the beef industry and these cattle will be entering feedlots from September 2015 to August 2016, with the majority of these toward the end of the corn marketing year. Further down in the report, USDA provided insight on beef production and here they estimate that 24.505 billion pounds of beef will be produced in 2016, up 231 million pounds versus 2015. At 600 pounds of beef per carcass, this equates to 385,000 additional head of cattle in 2016. But again, the calendar year used with beef estimates and the corn marketing year are not aligned.

The amount of corn that is expected to be carried over from the 2015 growing season totals 1.746 billion bushels. The current corn carry-over (the amount from the 2014 growing season carried over to this year) is estimated at 1.851 billion bushels. This is much improved from the very tight carry-over levels of 989 million and 821 million experienced in from the 2011 and 2012 crop years, respectively. This is why corn prices have fallen to the current mark that is hovering just below \$4 per bushel.

Prior to the report being released, the average of market analysts' predictions for the 2015 crop carry-over amount was 1.752 billion bushels and they looked for old, 2014, crop carry-over to be 1.864 billion bushels. Both of these were very near the reported values. As has become expected on a day when such an important report is released, futures trading started the day in limbo. Following the report's release corn futures moved higher reflected the smaller carry-over amounts. Also of note, the market started the day digesting the Planting Progress report, released late Monday afternoon, which showed plantings to be moving a very quick clip.

As noted in USDA's footnote regarding their yield estimate, early season events -- both planting progress and weather -- typically have minimal bearing on final corn yield. Even so, it would come with little surprise if commentary and other forms of media do not criticize USDA for not taking the fast pace of planting into consideration with their first yield and production estimate.

[1] Irwin, S., D. Good, and D. Sanders. "Understanding and Evaluating WAOB/USDA Corn Yield Forecasts." *farmdoc daily* (5):79, Department of Agricultural and Consumer Economics, University of Illinois at Urbana-Champaign, April 30, 2015.

[2] 750 pound cattle entering the feedlot; 1,400 pound cattle leaving the feedlot; 4.8 pounds of corn for each 1 pound of gain; and 56 pounds of corn per bushel





Summer Beef Skewers Recipe

TOTAL TIME: Prep: 15 min. + marinating Grill: 15 min. **YIELD:** 8 servings

Ingredients

1 cup pineapple juice
1 cup red wine *or* beef broth
1/2 cup soy sauce
1/2 cup Worcestershire sauce
1 medium onion, chopped
1 teaspoon dried thyme
1 teaspoon dried rosemary, crushed
1/2 teaspoon pepper
3/4 pound cherry tomatoes
1/2 pound whole fresh mushrooms
3 small zucchini, cut into 1/2-inch slices
2 small yellow summer squash, cut into 1/2-inch slices
2 pounds beef sirloin tip steak, cut into 1-1/4-inch cubes
Hot cooked rice, optional

Directions

1. In a bowl, combine the first eight ingredients and mix well. Pour 1 cup into a large resealable plastic bag; add vegetables. Pour remaining marinade into another resealable bag; add beef. Seal bags and turn to coat; refrigerate for 4-6 hours or overnight, turning occasionally.
2. Drain and discard marinade from beef. Drain and reserve marinade from vegetables. On metal or soaked wooden skewers, alternately thread beef, tomatoes, mushrooms, zucchini and summer squash.
3. Grill, uncovered, over medium heat for 3 minutes on each side. Baste with reserved marinade. Continue turning and basting for 8-10 minutes or until meat reaches desired doneness (for medium-rare, a meat thermometer should read 145°; medium, 160°; well-done, 170°). Serve kabobs over rice if desired. **Yield:** 8 servings.

Nutritional Facts: One serving (prepared with wine and reduced-sodium soy sauce; calculated without rice) equals 266 calories, 13 g fat (5 g saturated fat), 74 mg cholesterol, 459 mg sodium, 9 g carbohydrate, 1 g fiber, 24 g protein.

Diabetic Exchanges: 3 lean meat, 1-1/2 fat, 1 vegetable.