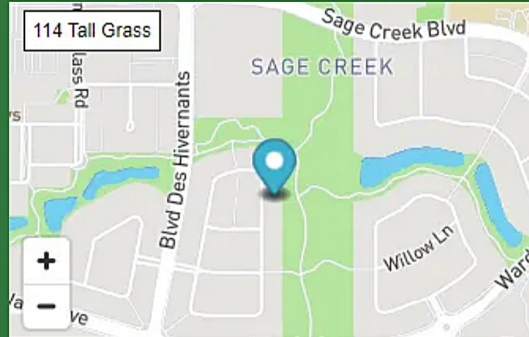


COMMUNITY FEATURES

- Affordable ... Income limits apply.
- Market Rate, no income limits.
- 2 and 3 bedroom townhomes.
- Easy access to I-135
- On-line payment portal.
- Non-smoking community
- Pet friendly community



Meadow View Residences



Please Call to Schedule a Showing

Hours

Office Hours: 9:00am to 5:00pm Tuesday and Thursday

We are in office at Prairie Fire Townhomes Monday, Wednesday and Friday 8:30am to 5:00pm

1206 Koehn Ave, Moundridge, Kansas 67107

office phone
316-333-1302
Toll free
888-298-0888



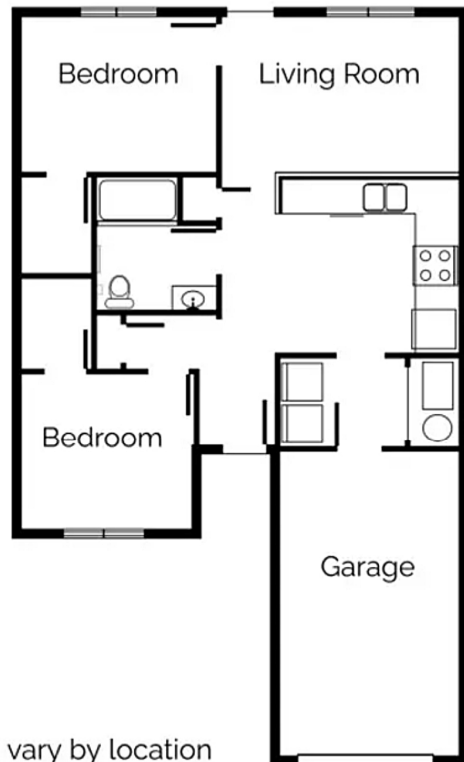
see more at www.beacon.cc



A quality community designed just for you!



2 Bedroom
1 Bath
951 SqFt



Meadow View Residences

FEATURES

- Attached garage with opener
- Custom fit window blinds
- Fully equipped kitchens with room for dining
- Individual furnace, central air and hot water
- Off-street parking
- Private entry with garage
- Private patio
- Refrigerator, range, dishwasher, microwave, and disposal
- Washer and dryer connections
- Walk-in Closets
- Wheelchair and disability accessible
- Safe, clean all electric (resident pays electric and water)
- Individual trash bins

1206 Koehn Ave, Moundridge,
Kansas 67107



office phone
316-333-1302
Toll Free
888-298-0888

see more at www.beacon.cc



3 Bedroom
2 Bath
1,406 SqFt

