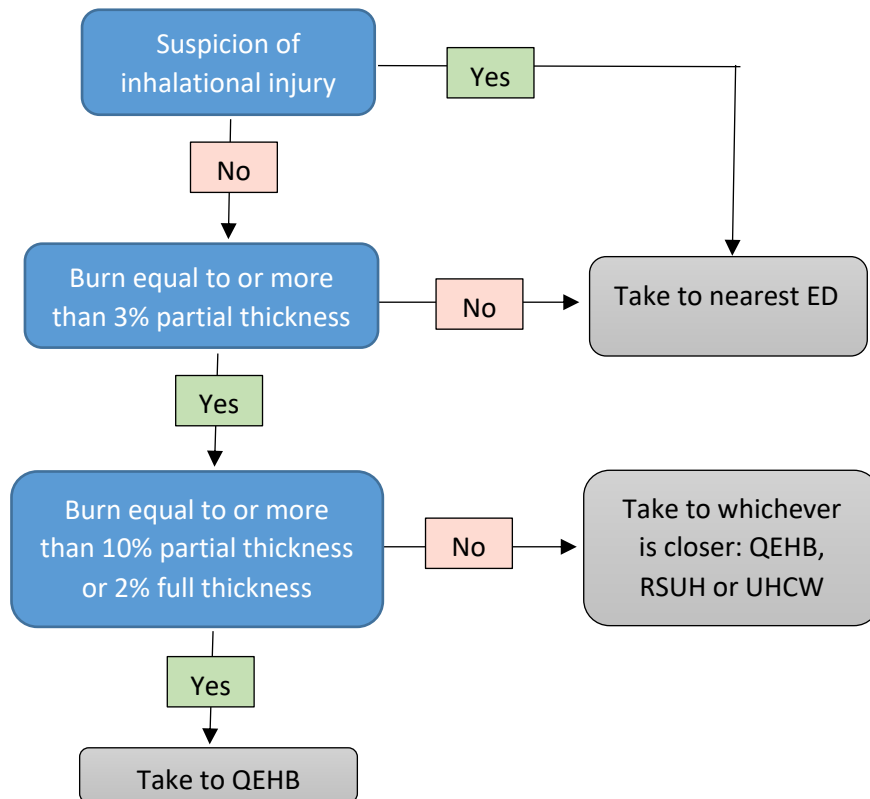


Pre-hospital triage criteria for burns patients destination

Queen Elizabeth Hospital Birmingham (QEHB) and Birmingham Children's Hospital (BCH) are the regional burns centres for adults (>16) and paediatrics (<16) respectively. This flowchart is designed to help pre-hospital practitioners make the right decision about hospital destination for isolated burns. **Where patients have a combination of burns and other traumatic injuries, the trauma desk should be called for advice as to whether this flowchart, or the major trauma triage tool, should be followed**

Adults (≥16)Children (<16)