

Mouse Anti-Vinculin [VCL/2572]: MC0420, MC0420RTU7

Intended Use: For Research Use Only

Description: Focal adhesions are identified as areas within the plasma membrane of tissue culture cells that adhere tightly to the underlying substrate. In vivo, these regions are involved in the adhesion of cells to the extracellular matrix. Paxillin and vinculin are cytoskeletal, focal adhesion proteins that are components of a protein complex which links the Actin network to the plasma membrane. Vinculin binding sites have been identified on other cytoskeletal proteins, including Talin and -Actinin has been shown to link Actin to integrins in the plasma membrane through interactions with the vinculin and Talin complex or by a direct interaction with integrin.

Specifications

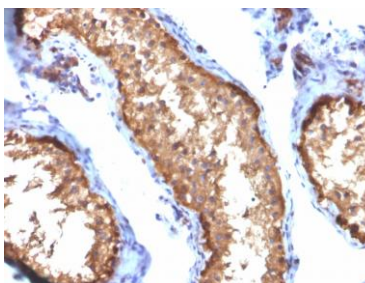
Clone:	VCL/2572
Source:	Mouse
Isotype:	IgG1k
Reactivity:	Human
Immunogen:	Recombinant human Vinculin protein fragment aa 174-322
Localization:	Cytoplasm
Formulation:	Antibody in PBS pH7.4, containing BSA and ≤ 0.09% sodium azide (NaN ₃)
Storage:	Store at 2°- 8°C
Applications:	IHC, WB
Package:	

Description	Catalog No.	Size
Vinculin Concentrated	MC0420	1 ml
Vinculin Prediluted	MC0420RTU7	7 ml

IHC Procedure

Positive Control Tissue:	Bladder and Testis, U-87, THP-1 cells
Concentrated Dilution:	50-200
Pretreatment:	Tris EDTA pH9.0, 15 minutes using Pressure Cooker, or 30-60 minutes using water bath at 95°-99°C
Incubation Time and Temp:	30-60 minutes @ RT
Detection:	Refer to the detection system manual

* Result should be confirmed by an established diagnostic procedure.



FFPE human testis stained with anti-Vinculin using DAB

References:

- Beyond the unwinding: role of TOP1MT in mitochondrial translation. Baechler SA, et al. Cell Cycle 18:2377-2384, 2019.
- Talin and vinculin are downregulated in atherosclerotic plaque; Tampere Vascular Study. von Essen M, et al. Atherosclerosis. Dec;255:43-53, 2016.
- Dystrophin-glycoprotein complex and vinculin-talin-integrin system in human adult cardiac muscle. Anastasi G, et al. Int J Mol Med. 2009 Feb;23(2):149-59, 2009.

Doc. 100-MC0420
Rev. A