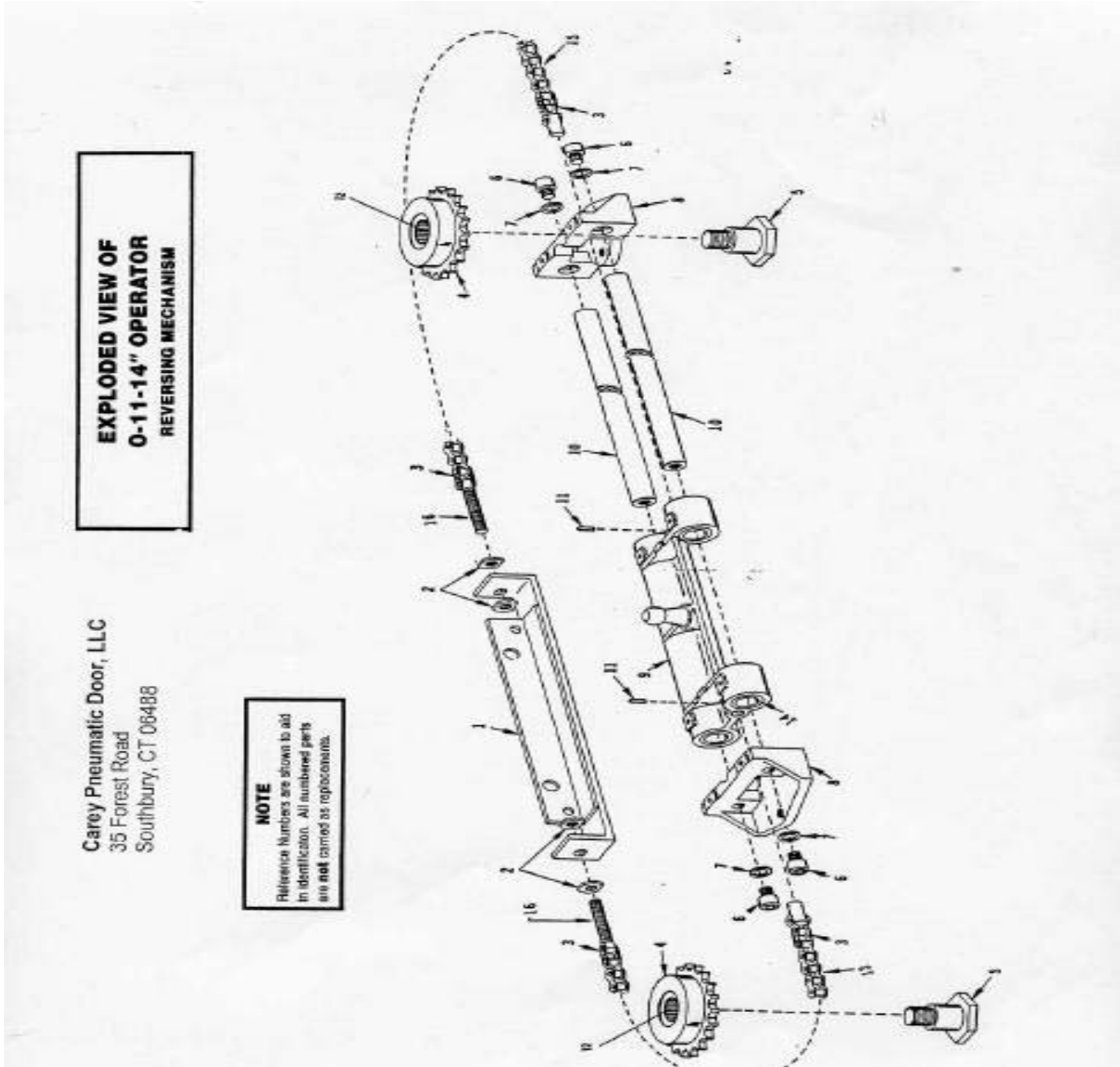


Carey Automatic Door, LLC
EXPLODED VIEW OF 0-11-14" PNEUMATIC OPERATOR

REVERSING MECHANISM



NOTE
Reference Numbers are shown to aid in identification. All numbered parts are **NOT** carried as replacements.

Carey Automatic Door, LLC
0-11-14" PNEUMATIC OPERATOR PARTS

| REF. NO. | PART NO. | DESCRIPTION |
|----------|----------|--|
| 3 | 303767 | Connecting Link |
| 4 | 408912 | Sprocket Assembly |
| 5 | 605776 | Stud |
| 11 | 707008 | Roll Pin (min. 5) |
| 12 | 303769 | Needle Bearing |
| 13 | 707011 | Chain |
| 14 | 306704 | Oilite Bearing |
| 15 | 707013 | Chain |
| 16 | 605777 | Chain Stud |
| | | For 011 Operators |
| | 306274 | No. 41 Roller Chain 39 1/2" |
| | 707009 | Slide Rod 14" |
| | 707010 | Slide Rod 24" |
| | 311120 | Conversion Kit for 011-18 Slide Assembly |
| | 312056 | Conversion Kit for 011-14 Slide Assembly |