

USEF/USDF #285468 and #342431

Opening Date: March 15, 2023

These shows are USEF Level 3 Competitions

**CLOSING DATE** : Monday, April 17, 2023



**The Good Horseman®'s**  
***Dressage at the Horse Park***  
***#1 and #2 Shows***

**April 29-30, 2023**

USEF-licensed/USDF, AQHA-recognized

***Georgia International Horse Park, Conyers, GA***

An official qualifying competition for

***The 2023 Great American/USDF Regional Championships***

**Show Highlights**

**The \$150 CBH Friesian/Baroque High-Score Awards**

**\$100 Second Level Challenge**

***\$50 Richard's Equine Video Dutch Warmblood Award***

***\$50 Jockey Club T.I.P. High-Score Award***

***\$50 High Point Farm Jr./YR Award***

**USDF Regional Adult Amateur Equitation Program**

**PAMELA KIMBLE MEMORIAL ADULT AMATEUR AWARD**

**Pony Division and Pony Test of Choice Classes**

**Saturday's 2nd Level Test 3 is AA /USDF Benefit Class**

**JUDGES:** Beverly Rogers, USEF "S," AZ; Alison Head, USEF "S," SC

**USEF TECHNICAL DELEGATE:** Joyce Hamblin, KY

**SHOW MANAGER: (send entries here):**

Ann Genovese, 4567 Rockbridge Road #297, Pine Lake, GA 30072

404-289-9328 cell; No FAX line—please e-mail: [goodhorseman@att.net](mailto:goodhorseman@att.net)

Website: [www.goodhorseman.org](http://www.goodhorseman.org) for show information

**SHOW-DAYS SECRETARY:** Janet Bryant **SCHEDULING/AWARDS:** Mary Lou Freil

**SCORER:** Kim Boggs Stansell

**ANNOUNCER:** Kristen Tracy

**SAFETY OFFICER:** Mark Fornwalt, "USDF Region 3 Volunteer of the Year"

**EMT:** Dustin Miller, 770-873-1759

**BRAIDING:** Tonya Scruggs, 678-588-4280—call or text for appointments; [braidbandtails@gmail.com](mailto:braidbandtails@gmail.com)

**SCRIBES' COORDINATOR:** Danielle Perry, 404-219-1266; [revelationfarm1911@gmail.com](mailto:revelationfarm1911@gmail.com)

**VIDEOGRAPHER:** Richard Taylor, 404-308-8713, [www.richardsequinevideo.com](http://www.richardsequinevideo.com)

**NIGHT WATCH:** Aaron Talbot, 770-871-9202 or text preferred to this number: 678-327-4228

**VETERINARIANS (ON CALL):** Dr. Dan Carter, Countryside Animal Hospital, 770-787-4711

**FARRIERS (ON CALL):** Daniel Crowe (official farrier), Covington GA 404-234-7445; Christian

Pefanis, Alpharetta, 912-602-4733; Brian Fitzgerald, 310-625-8712; Kevin Strandin, 678-427-6366;

Stan Davis, 678-410-9449; Jamie Wilcox, 706-248-3260

***The GHF Electronic Scoreboard***

# AWARDS

Six ribbons will be awarded in each class. First place winners will receive a Good Horseman memento. Winners must pick up mementos and large awards; only ribbons and sashes will be mailed. There must be at least three entries in any division award to be given. All scores (except the awards given by the breed registries) in divisions involving several levels will be "weighted" according to the details below. Scores must reach 60% to be eligible for awards (some sponsored awards may be excepted).

**The GHF weighted system:** Additional points will be added to scores in the following way: Training Level awarded no additional points: 1st level 1 point; 2nd Level 2 points; 3rd Level 3 points; 4th Level 4 points; FEI-Level 5 points. For the FEI Division: PSG, 1 point; Intermediaire I, 2 points; Intermediaire A and B, 3 points; Intermediaire II, A and B, 4 points; Grand Prix and Special, 5 points.

• **Good Horseman's Cup for High-Scoring Horse:** A special neck sash will be given to the highest-scoring horse in the show age 4 years or older. Weighted scores will be taken from **Training through Fourth Level and regular FEI-level (PSG through GP) dressage tests** (Adult Amateur, Jr./YR and Open Divisions). The Brentina and Developing Horse tests are USEF tests and are not included in the FEI-level division. The name and breed of horse, rider and owner will be engraved on a name plate on the GHF Cup which will be displayed at each show. When the plate spaces are filled up on the base of the trophy, the lucky final winner will get to keep the silver champagne cooler. Offered at all GHF shows. See **AWARDS CLARIFICATION** in this prize list.

• **Show's High Score and Reserve High-Score** sashes will be given to the riders achieving the first and second highest scores in the show in the following divisions: FEI (PSG through GP scores only); Adult Amateur, Junior/Young Rider and Open divisions Training through Fourth Level; and Freestyle (First Level through Grand Prix tests). There must be at least three entries from any division and scores at 60% and above to qualify for high-score awards. If same person receives the top two or more scores, the reserve score will go to the next highest-scoring horse/rider combination. Winners receive a white dressage pad sponsored by **Pacific Rim Equine Products**, makers of good horse clothing. Special FEI-level tests, i.e. Jr./YR, Brentina Cup, Developing Horse Grand Prix, etc., are not used in calculating high-score awards, including GHF Cup. See **AWARDS CLARIFICATION** in this prize list.

• **USDF Benefit Class:** Second Level Test 3 AA on Saturday has been designated a USDF Benefit Class. Special USDF ribbons and an engraved silver tray for 1st place will be presented at the Sunday (or #2 Show) Awards Ceremony.

• **The Good Horseman "AA Good Rider" Award:** A dress sheet (cooler) will be awarded to the rider receiving scores of 8 or better in both rider places in the collective marks on their test at any Good Horseman show in an Adult Amateur class. Only one cooler will be offered at each show; in case of a tie, the highest total score on the test will win. The award is sponsored by Karen McGoldrick. **Good Riders** will be eligible to receive only one cooler per year. Offered at all GHF USEF/USDF shows.

• **USDF Regional Adult Amateur Program.** See Page 20.

**\$100 SECOND LEVEL CHALLENGE:** This award is sponsored by The Powell Family, Four Shoes Farm, Murrayville, GA. Second Level Test 3 will be the required test for the Second Level Challenge, an award program initiated at our September 2020 show. The Challenge will be held over two days. The Challenge winner will be the horse/rider pair with the highest score at 2nd level Test 3 for the weekend. To be eligible, riders must be USEF AA members. The winner will receive \$100 and a special sash.

• **PAMELA KIMBLE MEMORIAL ADULT AMATEUR AWARD:** This award is given in memory of Pamela Kimble, USDF Silver Medalist, USDF L Graduate, popular schooling show judge and GHF member, whose life was spent spreading the good word about dressage. The special ribbon is awarded to the highest scoring Adult Amateur rider in Training through Fourth Level tests, ridden on Saturday. The weighted system will be used. Rider must be entered in the Sunday (or #2) show and ceremony where the award will be presented. Award given at all GHF shows.

• **\$150 Friesian/Baroque High-Score Awards,** sponsored by Caroline Hofland of CBH International at all GHF USDF/USEF shows. See application on Page 21.

• **\$50 Richard's Equine Video Dutch Warmblood High-Score Award.** Offered at the GHF **April and July** shows. See application in this prize list.

• **\$50 High Point Farm Junior/Young Rider Award:** This award encourages consistent excellence and is given to the Junior/Young Rider horse/rider combination with the highest weighted score on Saturday, regular tests Training Level through Grand Prix, including the FEI Jr./YR tests. Award presented at awards ceremony at all GHF shows.

• **\$50 Jockey Club T.I.P. Award** is sponsored by **The Jockey Club's Thoroughbred Incentive Program**. The highest scoring Jockey Club registered horse in on Saturday (or #1 Show) in regular tests Training through Fourth Level, PSG through Grand Prix tests (AA, Jr/YR, Open) will receive \$50 and a special Jockey Club ribbon. **The Jockey Club** requires the special T.I.P. entry form found in the show's prize list to be submitted to show management to enter. A mounted awards ceremony will be held on Sunday (or #2 Show). The results will be "weighted" (see GHF Cup details). Send registration papers and application with entry form. See application on Page 20.

• **Holsteiner Award:** Maggie's Menagerie of Ila, GA, Maggie and Abby Sjöberg give a special neck sash to the highest-scoring registered Holsteiner horse in the show, competing on Saturday at Training through Grand Prix (excluding tests that are scored differently). Offered at all GHF shows. Horse must have papers from the American Holsteiner Horse Association or the German Holsteiner Verband or have papers from other registries if the sire and dam are certified Holsteiners, i.e., as can happen with ISR/Oldenburg and Belgian registries, for example. A copy of the certificate should be submitted with the entry form. The award will be presented in the awards Ceremony.

• **International Georgian Grande Horse Registry's** high-point ribbon will be presented at Awards Ceremony to the IGGHR-registered horse receiving the highest weighted score in regular Training through Grand Prix classes in the Saturday (or #1) show. This award is offered at all GHF shows. For more information: [www.georgiangrande.com](http://www.georgiangrande.com). Martene Carleton is the show's IGGHR representative: [martene.carleton@hotmail.com](mailto:martene.carleton@hotmail.com).

• **Morgan Award:** The American Morgan Horse Association gives a special award to the highest-scoring registered Morgan horse in the show, competing at Training Level through Grand Prix. A copy of the horse's registration papers should be with entry form. The show's AMHA representative is Jesse Walker, [southern\\_jshai@yahoo.com](mailto:southern_jshai@yahoo.com); 706-871-1110

• **Trakehner Award:** The American Trakehner Association gives a special ribbon to the best-scoring registered Trakehner horse in the show, competing in the regular tests at Training Level through Grand Prix. Owner should send proof of current ATA membership and a copy of the horse's ATA registration certificate with entry form. Contact ATA office for proof of current membership—[www.americantrakehner.com](http://www.americantrakehner.com).

• **AWS Award:** The American Warmblood Society will present an "AWS Champion" ribbon for the high-scoring AWS-registered horse in the show, regardless of levels, excluding tests that are scored differently. A copy of the horse's AWS registration papers and owner's current membership card copy should accompany entry form.



# MAAPP

## MINOR ATHLETE ABUSE PREVENTION

### LEARN ABOUT MAAP POLICIES



Safe Sport Training



Local Travel



One-On-One Interactions



Social Media & Electronic Communications



Read about these & more at [usef.org/MAAPP](https://usef.org/MAAPP)

### REPORT MAAP POLICY VIOLATIONS



[usef.org/safe-sport/reporting](https://usef.org/safe-sport/reporting)

859-225-6915 or Text Anonymously 855-682-8733





## USEF Safe Sport Policy

All USEF Life and Senior Active members, as well as participants who have regular contact with minor athletes, are required to comply with the U.S. Center for SafeSport training requirement to be eligible to participate in the competition. All participants must adhere to the U.S. Center for SafeSport Code, USEF Safe Sport Policy, and the Minor Athlete Abuse Prevention Policies. More information about these can be found at [www.usef.org](http://www.usef.org).

## 2023 USEF Dressage Rule Changes

USEF Dressage has several rule changes which were approved by the Board of Directors and will take effect February 1, 2023. Among the rule changes are the following:

**DR120 Dress:** A tailcoat is permitted in all classes above Fourth level, in the FEI test for 7-year-old horses, and in tests for FEI Juniors.

**DR121 Saddlery and Equipment:** Either a snaffle bridle or double bridle is permitted for USEF High Performance and USEF Young Adult qualifying classes held at a national competition.

**DR121 Saddlery and Equipment:** Bits. A bridoon bit and a curb bit must be made of metal or *durable plastic, flexible rubber or synthetic material* and may be covered with rubber (in manufactured state).

**DR122 Execution and Judging of Tests:** In the event that the horse starts to defecate or urinate after the judge rang the bell but before the start of the test, the clock will be stopped until the horse is ready to continue at which point the clock will be restarted.

**DR122 Execution and Judging of Tests:** The FEI Tests for 7-Year-Old Horses cannot be offered in a Young Horse Test of Choice (TOC) class. When more than one judge officiates, the technical score and the quality score shall be weighted each with 50% towards the final score.

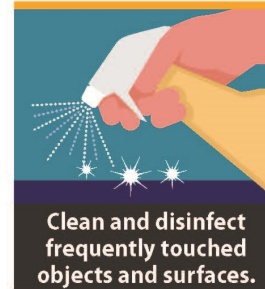
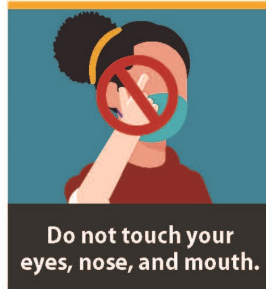
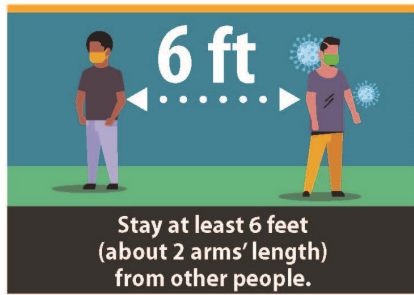
**DR129 Musical Freestyle Ride:** Language added to clarify the breaking of a tie. The higher artistic score shall determine the winner. Should the artistic mark be the same, the higher mark for harmony will decide. If still tied the higher mark for choreography will decide.

Questions? Contact the Dressage Department at [dressage@usef.org](mailto:dressage@usef.org).



# Stop the Spread of Germs

Help prevent the spread of respiratory diseases like COVID-19.



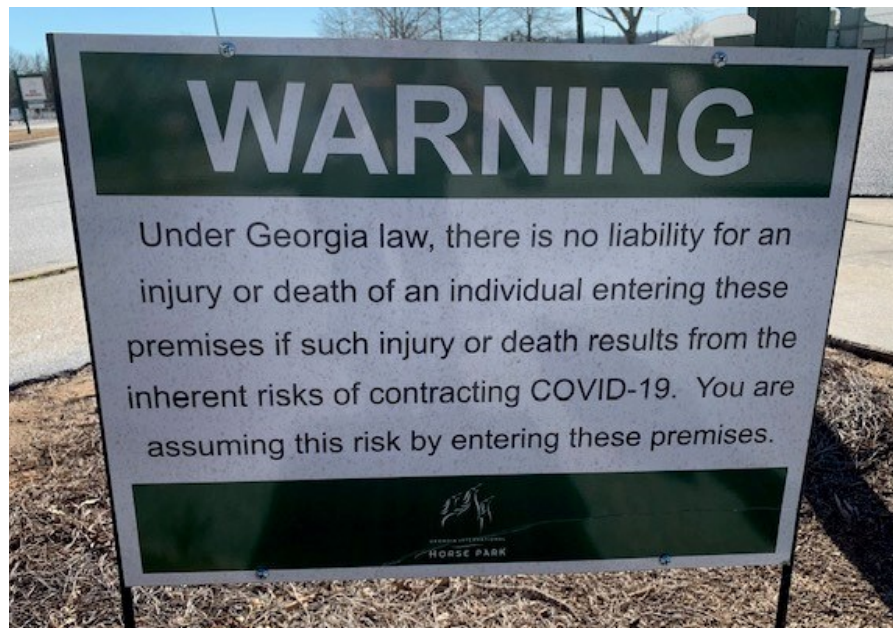
[cdc.gov/coronavirus](https://cdc.gov/coronavirus)

3/16/20 - A May 13, 2020 11:00 AM

## Notice to Exhibitors/Spectators

All persons entering competition grounds are required to self-monitor their temperature once daily prior to entering the competition grounds. Anyone with a temperature of 100.4° F (38° C) or higher may not enter the facility.

- The following individuals are not allowed to enter the competition grounds:
  - o Anyone who exhibits COVID-19 symptoms, including a temperature of 100.4° F (38° C) or higher,
  - o Anyone who has tested positive for COVID-19 within last 10 days, o Anyone who has tested positive outside of the past 10 days, but is still symptomatic, or
  - o Anyone who has been exposed to or has been in close contact with someone who has COVID-19 symptoms or has tested positive for COVID-19 within either the last 7 or 10 days (dependent upon certain criteria - refer to CDC Quarantine Options). \*Exception: Healthcare personnel who have treated patients using appropriate medical-grade PPE during the course of performing professional duties and those individuals who are fully vaccinated are exempted from this quarantine restriction.



# The Good Horseman® Dressage Shows

## Emergency Response Plan for a COVID-19 Incident or Outbreak

Any person who has a temperature of 100.4° F (37.5° C) or higher and/or has symptoms of COVID-19 may not enter the competition grounds. Additionally, anyone who has been in contact with a person who has tested positive for COVID-19 in the past 7-to-10 days is not allowed to enter the competition grounds, except for health care personnel who have treated patients using appropriate medical-grade PPE during the course of performing professional duties.

In the event a person becomes ill at the show or shows symptoms of COVID-19 infection, show manager must be notified. The manager must notify the USEF technical delegate, the show staff, the EMT and all show participants. The TD must call the USEF. The person must be removed from the grounds immediately in the same vehicle in which they arrived. If that vehicle is not available, the person **must remain isolated in place** and the two other persons signed on the same entry form must remain with the ill person until an ambulance or vehicle can be called to take the person home or to the hospital. The remaining persons and the horse entered in the show also must leave the property because of possible exposure to the very contagious Corona Virus.

**All competitors must have an emergency plan in mind on how quickly they will evacuate their horse from the horse park in case an COVID-19-suspected illness hits someone in their group because the entire group including the horse(s) must leave the park immediately.**

The horse park staff will be notified and the area will be vacated for disinfecting.

This show management is in contact with Allene Stephens, MPH, COVID-19 Response Epidemiologist, with Rockdale County Health Department, who is helping to advise the show on current health issues and state regulations during the pandemic.

The nearest hospital may be called: Piedmont Rockdale Hospital, 1412 Milstead Ave. NE, Conyers, GA. Their phone number is (770) 918-3000—**call before going to hospital to get permission to be admitted**. Ambulance: Central EMS 404-851-9911.

**Directions to Hospital:** Travel west on Centennial Olympic Pkwy NE (pass Hawthorn Suites Hotel). Turn left onto Highway 138 NE/GA-138. Travel 2.12 Miles. Turn right onto Sigman Rd NE/GA-20. Travel 1.37 miles. Turn left onto Milstead Ave NE. Piedmont Rockdale Hospital, 1412 Milstead Ave. NE, is on the left. Estimated Travel Time: 11 Minutes.

## **Emergency Numbers**

**After-Hours Emergency: Call 911 or Conyers Police (direct line) 770-483-6600**

**Show Manager:** Ann Genovese, 404-289-9328

**USEF Technical Delegate:** Joyce Hamblin, 859-537-3122

**SAFETY OFFICER:** Col. Mark Fornwalt, 770-549-7079

**EMT on Grounds:** Dustin Miller, 770-873-1759

**Ambulance, Central EMS:** 404-851-9911

### **USEF REQUIREMENTS FOR ACCESS TO SHOWGROUNDS**

- All persons entering competition grounds are required to self-monitor their temperature once daily prior to entering the competition grounds. Anyone with a temperature of 100.4° F (38° C) or higher may not enter the facility.
- The following individuals are not allowed to enter the competition grounds:
  - \*Anyone who exhibits COVID-19 symptoms, including a temperature of 100.4° F (38° C) or higher, or Anyone who has tested positive for COVID-19 within last 10 days,
  - \*Anyone who has tested positive outside of the past 10 days, but is still symptomatic, or
  - \*Anyone who has been exposed to or has been in close contact with someone who has COVID-19 symptoms or has tested positive for COVID-19 within either the last 7 or 10 days (dependent upon certain criteria - refer to CDC Quarantine Options).
  - \*Exception: Healthcare personnel who have treated patients using appropriate medical-grade PPE during the course of performing professional duties and those individuals who are fully vaccinated are exempted from this quarantine restriction. \*Refer to Appendix A for Self-Isolation/Self-Quarantine Directives in the event a person has a fever or exhibits other symptoms of COVID-19. \*\*Please reference Participant requirements regarding Participant temperature monitoring responsibilities.

## GENERAL INFORMATION

This event is actually two separate one-day shows with two USDF/USEF competition numbers and names. Riders can get their two required qualifying scores in one weekend (see Regional Championships rules on Page 26.) The #1 Show is on Saturday and the #2 Show is on Sunday. Participants riding in both shows must fill out two entry forms and one set of signature pages and pay separate fees for each day: i.e., if participating both days, the rider should pay for stabling, night watch fees on the 1st Edition entry form only. All other show fees must be paid twice. Please note the lower #2 Show office fee. For non-members, USDF non-member fee must be paid twice. USEF non-members must contact USEF. See **On-Line Entries** below.

## QUICK CHECK-LIST

### Every rider/owner needs:

- Current USEF Card (or send application transaction receipt from USEF), OR \$45 USEF show pass fee
- **Adult USEF members must complete the USEF SafeSport courses on USEF website.**
- Current USDF GMO or PM card (or send application transaction receipt from USDF) or \$35 USDF non-member fee

### If qualifying, Rider/Owner needs:

- Add \$15 qualifying fee per qualifying class
- Current USEF card and Current USDF PM card (or application electronic transaction receipt from USEF and/or USDF)
- Must submit the TWO signature pages found in this prize list, signed completely with emergency number

### Every Trainer/Coach needs:

(Trainer is person responsible for horse on grounds, not the rider's instructor. Coach is person paid for lessons at show.)

- Current USEF card (or send application electronic transaction receipt from USEF)
- Trainers and coaches must sign their rider's signature page

### Every Horse/Pony Needs:

- USDF Horse Identification card/certificate or apply for HID card (send electronic transaction receipt from USDF)  
*If rider is trying to qualify for USDF Regional Championships, horse needs:*
- USEF life or annual registration
- USDF lifetime registration
- Current Coggins and Influenza/Rhino shot record within six months. If from out of state, current health certificate.

### For Ponies:

- Current or life USEF Pony Card or appointment for measuring with show's veterinarian and the show's USEF technical delegate. For measurement (see details in this prize list.)

### For Young Riders:

- When a rider turns 18, he/she must compete as a Young Rider until the end of their 21st year.

### For Children:

- A parent or the trainer signed on entry form is required to accompany riders under age 14 when they check-in at the show office to pick up their packets.

### For USEF Non-Members

- Owners, Lessors, Riders (see below) must file for a once-a-year, one time Show Pass through the USEF website. Trainer or coach must be a current USEF member or the parent of a minor child.

## GENERAL INFORMATION

### REQUIREMENTS:

The following requirements are for horses and riders entered in a USEF/USDF-recognized dressage show:

★ **CURRENT ENTRY FORM:** Competitors must fill out the entry form and signature page from the current GHF prize list (this document). The required **GHF signature page** is also found on **Eq Entries Resources Page**, for those entering on line.

★ **USEF MEMBERSHIPS:** **GR1308** Membership and Document Requirements 1. To be eligible to participate as a rider, driver, owner, handler, vaulter, longeur, lessee, or agent, coach or trainer at Regular Competitions, Eventing Competitions at the Modified Level or above, Combined Driving Competitions at the Advanced Level, Dressage, Endurance and Vaulting Competitions, persons must be Members of the Federation as provided in GR202 or if not a member, must pay a Show Pass fee as provided in **GR206** (for exceptions see **GR901.9**). Exception: Applications for Federation Individual Membership and Horse Recordings submitted at Licensed Competitions: Lessees are considered owners in connection with this membership requirement. When an entry is under multiple ownership, only one owner need be a Member or pay a **Show Pass** fee. See

★ **SAFE SPORT PROGRAM:** Every adult competitor who is a USEF member must complete the SafeSport program. If a member is not an exhibitor at renewal time but becomes an exhibitor at a later date, that person has 30 days after the competition to complete the SafeSport Training.

★ **USDF MEMBERSHIPS:** Riders and owners/lessees must be current USDF members or pay the \$35 USDF non-member fee. The USDF non-member form is no longer required. Riders must have a USDF Participating Membership, Group Membership, or Non-Member ID number. Owners must have one of the above listed membership types or a USDF Business Membership. The USDF Education Membership is not an acceptable membership type for a rider or owner of a horse competing in USEF Licensed/USDF Recognized competitions. Riders and owners/lessees who are not able to present proper USDF membership, NM identification number, or USDF horse registration credentials to the competition secretary, must complete a USDF Competition Affidavit Form and pay the \$5 affidavit filing fee. Affidavits are not only for current non-members without a membership card; they are for anyone, members or non-members, that cannot provide verification of their USDF number or horse number. A copy of a completed USDF Competition Affidavit Form from another competition may also be used for verification purposes for up to 60 days. (Exception: Affidavits may not be used at Great American Insurance Group/USDF Regional Dressage Championships.) Those entered in USDF Introductory, Pas de Deux and Quadrille classes are exempt from USDF and USEF membership. Participants and horses competing in **Para-Equestrian** classes at USDF recognized competitions will no longer be exempt from USDF memberships. Para-Equestrian competitors are now required to have a USDF Group Membership, a USDF Participating Membership or a USDF Non-Member ID and pay the \$35 USDF Non-Member fee per competition. Owners of horses competing in the Para-Equestrian classes will be required to have a USDF Participating Membership, a USDF Business Membership, a USDF Group Membership or a USDF Non-Member



**Dressage Show Fees (see class fees in class list):**

Great American/USDF Qualifying Fee (mark Q)	\$ 15.00
Post-entry fee per class	\$ 20.00
Office Fee (Perfekt Packet Refund \$20)	\$ 40.00
USEF Fee (including \$8 Drug Fee)	\$ 23.00
USEF Show Pass Fee (order directly from USEF)	
USDF Non-Member fee (per rider and owner)	\$ 35.00
USDF affidavit fee for registered non-member without card	\$ 5.00
USDF HID horse recording fee for unregistered horses	\$ 35.00
Camper fee (per night)	\$ 60.00
Dry Camp fee (for those not needing electricity/per night)	\$ 20.00
2023 GHF Membership (optional) Single	\$ 40.00
2023 GHF Membership (optional) Family	\$ 55.00

EMT Fee (per entry/per show)	\$ 5.00
EFT fee (per entry for electronic payment)	\$ 10.00

**Stabling Fees**

<b>One Day Stabling/two bags shaving</b>	<b>\$ 95.00</b>
Overnight Stabling/two bags shavings	\$ 125.00
Friday/Sunday/two bags	\$ 150.00
Thursday/Sunday/two bags	\$ 175.00
Tack Stall/no shavings/for weekend	\$ 95.00
Extra shavings/per bag	\$ 10.00
Night Watch Security fee (per horse <u>overnight/weekend</u> )	\$ 10.00

ID and pay the \$35 Non-Member fee per competition. The horses competing in Para-Equestrian classes will be required to have a USDF HID number or be USDF Lifetime registered.

★ **SIGNATURES:** This prize list has two GHF signature pages. Both must be signed and returned with your entry. Signatures that fill in automatically are "legal" in Georgia and with USEF and no other signatures are needed UNLESS the rider is different than the TRAINER, then the trainer signature line will appear blank and will require the trainer to sign in handwriting. The coach's auto-filled signature is legal too. If a paper (hard copy) entry form is used, the release page must be signed in ink by the rider, the owner or owner's agent, the trainer and (if any) coach. The "trainer" signature is for the adult responsible for the horse at the show—initialed signatures are not accepted for rider/owner/trainer. If the rider has not reached age 18, usually the parent signs as trainer and the parent must be at the show with the rider. If the parent will not be at the show, then the instructor or other adult must sign for the junior. That person must be a USEF member or must pay the \$45 USEF "Show Pass" fee. The parent is not required to be a USEF member since the parent participates under the child rider's membership, unless the parent is the owner of the horse, then full membership requirements apply. The coach is the person being paid for lessons at the show and is responsible for the rider. That person also must be a USEF member or pay the USEF "Show Pass" non-member fee. An unpaid friend helping the rider does not have to sign as coach.

★ **HORSE/PONY ID:** All horses/ponies must have a USEF Lifetime or Annual membership and USDF Lifetime Registration certificate or a USDF Horse/Pony Identification number (HID). If not, the \$35 USDF HID fee must be paid with the entry and the HID form must be filled out at the show. Exceptions: some animals do not need a USDF HID number (see the USDF HID application).

★ **HORSE/PONY AGE:** No horse may compete in any under saddle class if it is under 36 months of age (of foaling date) at the time of competition. Horses competing at the Grand Prix Level must be at least eight (8) years of age and horses competing above Fourth Level must be at least seven (7) years of age; except for 3-year-olds, an equine's age is counted from Jan. 1 of the year of birth to Jan. 1 of the current competition year. DR 119.1 Proof of date of foaling must accompany entries of three-year-old horses/ponies.

★ This show is a qualifier for the **2023 USDF Regional Championship**. The qualifying fee now is \$15 per qualifying class. Riders and owners wishing their horses/ponies to be entered into **The Great American Insurance Group/USDF Regional Dressage Championships** qualifying classes must be current members of USEF and Participating Members of USDF (not Group Members) or owners may be USDF Business Members, and their animals must have USEF Lifetime or Annual membership and USDF Lifetime Registration certificate. Copies of all cards are required with entry. Horse Identification (HID) numbers are not sufficient for qualifying classes.

★ **CITIZENSHIP:** Riders who are citizens of other countries must be members of USEF OR current members of their national federation and a copy of their foreign-member cards must accompany their entry form. If they are not members of USEF they are exempt from the non-member fee. Foreign rider licenses are no longer required.

★ **HEALTH CERTIFICATES:** Out-of-state horses must have a current health certificate (Georgia law) and a copy of that certificate should be received by mail or e-mail no later than the Wednesday before the show. Or you can take a picture of it with your I-phone and e-mail it. We no longer have a FAX line.

★ **VACCINATION:** Every horse (see rule below) on the grounds must include with their entry a copy of a current negative Coggins certificate within 12 months and documentation of Equine Influenza Virus and Equine Herpes Virus (Rhinopneumonitis) vaccinations within six months prior to entering the stables. (See complete USEF rule below). The name on the certificate must match the name on the entry form and on the Coggins certificate. The original Coggins certificate must travel with the horse (Georgia law).

**GR844 Equine Vaccination Rule 1.** At Federation licensed competitions, horses entering the grounds must be accompanied by documentation of Equine Influenza Virus and Equine Herpes Virus (Rhinopneumonitis) vaccinations within six months prior to entering the stables. Horses not in compliance with this rule may be required to leave the competition grounds upon request by Competition Management. Documentation should consist of one of the following methods mentioned below. The frequency of vaccine administration should be per the vaccine manufacturers' or veterinarian's recommendations. It is recommended that vaccines are administered by or under the direction of a veterinarian. 2. In the case of vaccines administered by a veterinarian, the exhibitor, upon request by Competition Management, must provide documentation from the veterinarian on documenting that the horse in question received the vaccinations; name of the vaccines and date of vaccine administration. 3. In the case of vaccines administered by a person other than a veterinarian, the exhibitor, upon request by Competition Management, must provide a receipt of the vaccine purchase which is signed by the owner, or agent with care, custody, and control of the horse; name, serial number and expiration date of the vaccine; and date of vaccine administration. 4. In the case of a horse that is unable to receive either of the vaccinations due to a history of adverse reactions, the exhibitor, upon request by Competition Management, must provide a letter from the veterinarian on official letterhead stating that the horse in question cannot be vaccinated due to medical concerns and a log of temperatures taken twice daily for the seven days prior to entering the competition grounds. These horses must also have their temperature taken and logged twice daily while on the competition grounds. The log of temperatures should be provided to the Competition Management, steward, or technical delegate when requested. 5. Competition Management may not amend or enhance vaccination requirements without prior approval of the Veterinary Committee. BOD 1/17/15 Effective 12/1/15.

**MANDATORY NECROPSY:** **USEF GR850** requires that a necropsy be performed in all incidents of euthanasia or fatality. The University of Georgia Veterinary Hospital has the nearest pathology lab for this purpose. Phone number for the Necropsy Lab is 706-542-5568. Show manager has the referral form. See Emergency Equine Quarantine protocol plan on the Show Info/Ride Times page of our website.

**ON-LINE ENTRIES:** GHF shows accept entries on line through Equestrian Entries: [www.equestrianentries.com](http://www.equestrianentries.com). There is a link to their website on the GHF website front page. If you do not already have a user account with Eq-Entries.com, you may sign up now. If you are a first-time user, you can get \$5 off your first paid on-line entry submission. Input the following in the Coupon Code in the payment section: "FIRSTENTRY". You can print your entry and mail it with a personal check, or pay on line with a credit card. If you choose to pay on line, a 5% service fee is added to your total at check out. There is no charge to join Eq-Entries, create an entry or print an entry. So if you choose to pay by personal check, the service is free. Make sure your e-mail address is correct so the show can contact you.

**PERFEKT PAKET REFUND:** The office fee is \$40 so that competitors whose entries are complete (Perfekt) on first receipt will get half of the office fee back--\$20 in cash--actually a reduction in the office fee for the careful competitor. If the entry has documents trickling in before the show but is complete when the rider gets to the show, the rider will receive a \$10 refund. See caveat below.

**SHOW DOCUMENTS:** **The show accepts ONLY the two signature pages found in the show's prize list.** If you are entering on line, you can find the GHF signature page on the **Eq Entries Resources Page**. To create a speedy check-in, competitors are asked to e-mail (not text) all missing documents to good-

**Reminder:**

All USEF Life and Senior Active members, as well as participants who have regular contact with minor athletes, are required to comply with the U.S. Center for SafeSport training requirement to be eligible to participate in the competition. All participants must adhere to the U.S. Center for SafeSport Code, USEF Safe Sport Policy, and the Minor Athlete Abuse Prevention Policies. More information about these can be found at [www.usef.org](http://www.usef.org).

**horseman@att.net** no later than the **Thursday before the show**. Documents e-mailed on Friday, a travel/load-in day for management, may not be received in the show office and the competitor may **forfeit the Perfekt Paket Refund**.

**SHOW OFFICE:** The show will be using **Show Office #2** (facing Barn 6 at the covered arena) will be open at noon on Friday from noon to 6 p.m. and from 7 a.m. till the end of the show each show day on Saturday and Sunday.

**CLOSING DATE AND LATE FEE:** Entries will be received on a first-come basis. Paid entries accepted if received at the show office address (4567 Rockbridge Rd. #297, Pine Lake, GA 30072) or into the Equestrian Entries internet program by the closing date unless the show has been deemed full before the closing date. They can also be e-mailed to [goodhorseman@att.net](mailto:goodhorseman@att.net). Late entries accepted on a first-come basis after closing date only if space is available.

**REFUNDS** will be given in full prior to the closing date for any reason. After the closing date, there will be no refunds. However, in the case of illness or injury to horse or rider, a show credit slip (excluding non-refundable drug fee, the office fee, any qualifying fees and cost of shavings if they are not recovered) may be issued toward a future GHF show with a veterinarian's or physician's certificate (the certifying vet or doctor may not be owner, rider or trainer) received by management no later than 10 days after the show. To get credit, the rider or representative must notify the show secretary in person before show starts so the riding times may be filled. Do not use messages, texts or e-mails without confirmation of receipt by the show. USEF requires that competitors must notify the secretary when leaving the grounds before show ends.

**YOUR E-MAIL ADDRESS:** Please make sure your e-mail address is correct in **Equestrian Entries** so you will get important show updates/results.

**CANCELLATION OF CLASSES:** There will be no refunds (with the exception of USDF qualifying fees) if the show or classes are canceled because of weather, accident or other emergency beyond the control show management after the closing date. However, if the show is canceled before the show is set up and before horses arrive on the grounds, competitors will receive a show credit (including any USDF qualifying fees) less a \$40 office fee.

**ENTRIES** may be paid by credit card or check. Entries may not be accepted unless accompanied by signed entry forms and COPIES of the rider's, owner's and horse's USDF and USEF cards, and trainer's and coach's (if any) current USEF cards. E-mailed entries may not be accepted without credit card information.

**POST-ENTRIES/CLASS CHANGES** may be accepted if space is available (to fill scratches, etc.) upon payment of regular show fees, regular class fees plus an additional post-entry fee of \$20 per class. Riders who add or withdraw **qualifying** to or from their entry may do so without penalty or charges, but there will be no refunds.

**NON-COMPETING HORSES** will be accepted upon payment of stabling fee, night watch fee, EMT fee and office fee. Owners/riders must fill out a separate entry form for that horse and sign the two signature pages in all places and send it to the entries secretary along with the horse's current Coggins certificate and health certificate for out-of-state horses. (See **Non-Competing Riders** below.)

**NON-COMPETING RIDERS** who are not entered in the show and are NOT signed as trainer or coach but need to ride horses which are entered must submit a filled-out and signed entry form listing the horses they are planning to ride—unless they are signed as trainer or coach on the horses they want to ride. There is no charge for this. They must also sign the entry form for a non-competing horse if they are not the entered rider, trainer or coach. They must comply with show and USEF rules.

**HELMET RULE: USEF Rule (DR120.1)** requires that secured protective headgear (as defined in **DR120.5**) must be worn at all times while riders are in competition or riding on the grounds at USEF competitions. This rule applies to ship-in days prior to and after the show, and after show hours, anywhere on show grounds. This requirement includes FEI-level riders and those who may not be entered in the show. This regulation will be strictly enforced. Penalties include elimination and possible charges.

**SAME FOR ALL: USEF GR916** Except as permitted by the FEI for FEI recognized classes, all entries at a Licensed Competition must be on the same basis. A competition cannot give free or reduced entries, free or reduced transportation or other expenses to one exhibitor unless the same privileges are extended to all exhibitors in the same section or subset of competitors. The requirements to obtain these privileges must be advertised to all potential exhibitors. No fees may be imposed that are not listed in the prize list.

**SCHEDULING ADVISORIES:** Riders entered on three horses or more per day do so at their own scheduling risk. If show management is not able to schedule the additional rides to the satisfaction of the rider/owner, the entry fees will not be refunded. However, show management will try to accommodate them. Riders on multiple horses who have scheduling issues, please attach a sticky note to your entry form indicating which horse you would like to go first or if you need an early or late ride for some reason. Not every request can be satisfied—but we try.

**THE TIME SCHEDULE** will be posted in a conspicuous place near the show office by noon the day before the competition. Ride times will not be changed after noon the day before the start of the entire competition, except in compliance with **GR830.5**. Classes start at 8 a.m. each day, though a 7:30 start may be required in hot weather. Competitors will be notified of any change to the start times.

**RIDE TIMES:** Riding times and barn/stall numbers will appear on The Good Horseman website ([www.goodhorseman.org](http://www.goodhorseman.org)), usually the weekend before the show, but no later than the Tuesday before the show. Please check your times and let show manager know if you see any scheduling problems.

**CONFIRMATION OF ENTRIES:** Receipt of entries will be confirmed by e-mail upon receipt. Make sure your e-mail address is correct.

**"NO SHOWS":** Competition management may reserve the right to fill a competitor's subsequent ride times if that competitor fails to notify the competition of his/her intention to scratch (i.e., is a "no show"). (**DR126.3**)

**WHIPS:** USEF rules allow one whip no longer than 47.2 inches (120 cm), including lash may be carried in all classes, including most qualifying classes, except in USEF/USDF or FEI championships. See **DR120.5** for more complete details. Riders in FEI Pony tests must carry a whip no longer than 100 cm. Whips are allowed in FEI/USEF/NAYC qualifying classes.

**COMPETITOR NAME CHANGE:** If a competitor has changed his/her name but the horse recording is still listed under the previous name, the exhibitor must notify USEF and USDF of the name change by FAX, e-mail or letter. After USEF and USDF have made the name change, the exhibitor can print an on-line card with the correct name on the membership card and the on-line horse card. See **USEF GR1105-1108**.

**ACCOMMODATIONS: Host Hotel: LaQuinta Inn and Suites**, 1184 Dogwood Dr, Conyers, GA 30012, near intersection of Hwy. 138 and I-20. Phone: 770-918-0092. Use this link to get special rates: <https://www.wyndhamhotels.com/laquinta/conyers-georgia/la-quinta-atlanta-conyers/overview> Other hotels: Days Inn at 770-922-3314; Hampton Inn 770-483-8838.



**DIRECTIONS: (Best way to hotels/restaurants)** Take Exit 82 from I-20. Turn North. The Georgia International Horse Park (GIHP), 1996 Centennial Olympic Parkway, Conyers, GA 30013, is located about 4 miles north of I-20 on GA Hwy. 138 (Exit 82). Centennial Olympic Parkway is on the right. Follow signs to main entrance on right. Trailers should take the third (most direct) park entrance—Gates C or D.

**Best way to Barn 5:** Take Exit 84 (Salem Rd.). Go north one mile on Salem Rd. Turn right on Gees Mill Rd. Go about 3 miles, cross Yellow River bridge, immediately turn right into Gate A. Follow this road, pass Barn 6, turn left at next road/turn. Farrier/Vet building will be on left, **Barn 5** will be the next barn on your right. Show office is on arena side of this barn on Saturday and Sunday. Friday show office is in Show Office #2 beside covered arena. Show manager's cell phone: (404) 289-9328.

**Best way to Barns 1, 2 and 3:** Take Exit 84 (Salem Rd.). Go north one mile on Salem Rd. Turn right on Gees Mill Rd. Go about 3 miles, cross Yellow River bridge, turn right at top of hill onto Centennial Olympic Parkway. Turn right into GIHP Gate D. GHF's trailer/RV hookups will be on the left at end of RV lots.

**Best way to Barn 6:** Take Exit 84 (Salem Rd.). Go north one mile on Salem Rd. Turn right on Gees Mill Rd. Go about 3 miles, cross Yellow River bridge, immediately turn right into Gate A. Follow road down hill. **Barn 6** is on the left across street from camper/RV lot.

**STABLING:** Mandatory. This show will use Barn 2 and Barn 6 (which has a camper lot next to it—see Camper/RV details). Please write your stabling requests (one name per group) on a Sticky Note or separate sheet and attach to entry form with map for large groups. The stalls have interlocking stall mats. Which barns will be used will be announced on the Ride Times page of the GHF website [www.goodhorseman.org](http://www.goodhorseman.org). All stalls have electricity, running water and steel doors. The dimensions of stalls in Barns 1 through 5 are 11'x12'; Barn 6 stalls are 10'x10'. Your stall assignments will be posted on the GHF web site's Ride Times page the week before the show. Those wishing to stay over Sunday night must include an extra \$50 stabling fee. Farm animals are not allowed at the show.

**BEDDING AND GOLF CARTS:** Each stall comes with two bags of regular shavings. Queen Products also offers Curley shavings which may be purchased by calling Terry Darby at 770-855-8793 or e-mail: [queensalesgihp@gmail.com](mailto:queensalesgihp@gmail.com). Straw or paper bedding is not allowed—exceptions made only upon payment of an additional \$20 clean-up fee. Queen Wood Products also sells feed and rents golf carts.

**CAMPER INFORMATION:** Camper and RV hook-ups are available at \$60 per night. Terry Darby, who sells the shavings, will open the camper sites for each arrival. His cell phone number is 770-855-8793; e-mail [darbyterryj@bellsouth.net](mailto:darbyterryj@bellsouth.net). Please include camper tag number or ID on your entry form. Horse trailers are not allowed in RV/Camper lot without payment of the dry-camp fee of \$20 per night which is charged to campers not requiring water or power regardless of where the trailer/vehicle is parked. Hot/cold showers are located in RV/Camper/Trailer lot restroom across Main Street from Arena 9.

**DAMAGE:** Competitors will be charged by the horse park office for any damage caused by you or your horse to the property during our shows. If, when you arrive at your stall, you find something out of line:, i.e., broken boards, loose floor tiles, nails, screws, etc., be sure you report them to the show office immediately to avoid possible charges.

**FARRIER/VET BUILDING** is located near Barn 5, across the street from the building that houses the Queen Wood Products shavings office. Please tell the vet or farrier about this facility so that you can meet there.

**NIGHT WATCH:** Aaron Talbot is our night watchman. Phone Aaron: 770-871-9202 or (text preferred at this number) 678-327-4228. Aaron also offers limited personal care such as feeding and watering for an additional fee. Exhibitor must make hose available. Aaron is on the grounds or in the show office all night Friday and Saturday.

**ARENAS:** The show will be held in the Walker Covered Arena and, if needed, two other arenas (GIHP 14 and 16) nearby and will use up to three 20x60-meter PVC board or pipe competition arenas with sand-mix footing. Schooling within the sides of the competition arenas is allowed on Friday.

**WARM-UP AREAS:** The show will use the large 430'-by-148' PVC board-fenced ring outside the Walker Covered Arena for warm-up. It will be divided by temporary fencing into two or three separate, fenced warm-up areas. All warmup areas have sand-mix footing, same as competition arenas. Horses may not be turned loose in any arena on the property. No one on foot or otherwise is allowed in the warm-up areas unless authorized—coaching must be done from outside the fence. Cones or other objects are not allowed in the warm-up rings. Schooling within the sides of the competition arenas will be allowed on Friday.

**LUNGEING RING:** There will be one designated lungeing ring with sand-mix footing, located beside the Farrier/Vet building. It is marked by a sign. It is the only location on the GIHP grounds where a GHF show horse may be lunged. The large lot (GIHP 14) with the same sand-mix footing next to Barn 6 may be used instead and it will be marked.

**COMPETITION "BRIDLE" NUMBERS:** USEF rules require that every horse on the grounds wear his/her competition number while the horse is out of his stall. Bridle number should be worn on the left side. Exhibitors should check in at the show office to receive their bridle number BEFORE exercising their horses.

**THE CONCESSIONS STAND:** Open daily in the Walker Covered Arena from 7 a.m. till end of show each day.

**BRAIDING:** Tonya Scruggs, 678-588-4280—call or text for appointments; [braidbandtails@gmail.com](mailto:braidbandtails@gmail.com)

**DEFINITIONS AND ELIGIBILITY:** Adult Amateur entries must be registered as such with USEF and must enclose a copy of their current USEF membership card. Individuals are eligible to enter as Juniors until the end of the calendar year in which they reach the age of 18. Individuals are eligible to enter as Young Riders from the beginning of the calendar year in which they reach the age of 16 until the end of the calendar year in which they reach age 21. Competitors may compete as Adults from the beginning of the calendar year in which they reach age 22. Riders who are 16 and 17 years old may compete as either Juniors or Young Riders but not both in the same show. Open classes are open to anyone eligible to compete, including professionals. Green Horses, for the purpose of this show, are horses which have not reached their seventh birthday in the current competition year. Horses under 36 months of age to the date of birth may not compete in any dressage under-saddle class (DR119.1). Proof of age should accompany the entry form of all three-year-old horses.

**USDF JR./YR INFORMATION:** To qualify for this year's **Great American Insurance Group/USDF Regional Championship**, eligible Young Riders must ride the FEI Young Rider Team Test to qualify for the FEI Young Rider division. The FEI Young Rider Freestyle is no longer used to qualify for the regional championships. Junior Riders (age 14-18) must ride the FEI Junior Team Test to qualify for the FEI Junior Division. Prior to riding in the class, riders must pay \$15 Qualifying Class fee to the competition secretary. The FEI Junior Individual and the Pony Individual and Team tests are no longer used to qualify for **Great American Insurance Group/USDF Regional Championship**.

**PONY MEASUREMENT: "USEF Rule DR135 Pony Measurement 1.** Any animals not over 148 centimeters without shoes, or 149 centimeters with shoes are classified as ponies." All other animals are classified as horses (or mules). Owners of animals they wish to exhibit in a class limited to ponies or to be eligible for the NDPC classes (see above) must have a USEF pony measurement card or they must be measured by the show veterinarian and TD at cost to the exhibitor who will pay the veterinarian directly for a fee of no more than \$100. The show does not charge for this. Any pony entered in the show is eligible to be measured, but it is not required unless the pony is vying for pony awards or classes. Measurement should take place early Saturday morning in front of the show office. Please make your appointment ahead of time directly with the show veterinarian's office: Dr. Dan Carter, Countryside Animal Hospital, 770-787-4711. (See FEI Ponies whip rule.)

**WHIPS:** USEF rules allow one whip no longer than 47.2 inches (120 cm), including lash may be carried in all classes, including most qualifying classes, except in USEF/USDF or FEI championships. See **DR120.5** for more complete details. Riders in **FEI Pony tests** may carry a whip no longer than 100 cm. Whips are allowed in FEI/USEF/NAYC qualifying classes.

## USEF Membership Statement

Life, senior active and junior active members shall be eligible to participate in all classes at Regular Competitions, Eventing Competitions at the Modified Level or above and Combined Driving Competitions at the Advanced Level, Dressage, Reining and Vaulting Competitions and Endurance Rides. A non-member may participate as a handler, rider, driver, owner, lessee, or agent, coach or trainer at Regular Competitions, Eventing Competitions, Dressage Competitions, Reining Competitions and Combined Driving Competitions upon payment of a Show Pass fee. Participants in the following classes are exempted from the Requirements of this rule: 1) leadline; 2) exhibitions; 3) games and races; 4) classes for 4-H members; 5) walk trot (exception: Friesian performance FR231) and academy classes (academy classes are classes limited to horses used regularly in a lesson program); 6) USDF introductory level tests, pas de deux and quadrille classes; 7) NRHA Endorsed Reining Competitions. 8) Opportunity classes, 9) citizens of other nations who have proof, in English, of current membership in good standing of their own National Federation, 10) USEA beginner novice division; and 11) assistant handlers in Dressage Sport Horse Breeding classes. *Updated for 2023*

**EMERGENCY NUMBERS:** In case of emergency, call 911 or the direct line to the Conyers Police Department 770-483-6600, or call the show manager at 404-289-9328. The numbers of the show's veterinarian and farriers are published on the front page of this prize list, on the front of the show program and in prominent places at the facility.

**FREESTYLE REQUIREMENTS:** This show offers Freestyle classes, First Level through FEI Level. **DR129.9:** Except for USEF/USDF Championship classes and for FEI Pony Riders, FEI Junior, FEI Young Rider and FEI Para-Equestrian Freestyles, in order to enter a freestyle class at any level, a horse/rider combination must have received a minimum score of 63% for Training through Fourth levels and 60% for FEI levels in the highest test of the declared freestyle level or any test of a higher level at a USEF/USDF licensed Dressage Competition, Federation Licensed or FEI recognized Dressage Competition, or "open" Dressage class (i.e. open to all breeds) at a Federation Licensed Competition held prior to the competition where the horse/rider combination is entered to ride a freestyle class. A photocopy of the test verifying eligibility, or copy of the USDF score verification, must be submitted with the entry for a freestyle class. A 60% or higher earned by a horse/rider combination at the FEI levels may be applied for a freestyle ridden at a lower level. Example: a 60% or higher earned by a horse/rider combination at the FEI Prix St. Georges level will allow a rider/horse combination to compete in a Fourth level freestyle (or any lower level freestyle). Additionally, as a reminder, a 60% or higher earned in the FEI Grand Prix 16-25 test will also qualify a rider/horse combination to ride the FEI Grand Prix Freestyle.

**TESTS:** This show will use the 2020 FEI dressage tests—see the FEI website: [www.fei.org](http://www.fei.org). **Note:** FEI Intermediate I and II are NOT consecutive tests. See Rule Book Levels chart for further information. This show will use the 2023 USEF tests (see USEF website: [www.usef.org](http://www.usef.org)), the 2023 USDF Introductory Tests A, B and C and the 2023 USDF Freestyle tests, First through Fourth levels only.

**SCRIBES' COORDINATOR:** Danielle Perry is in charge of selecting scribes our shows. Anyone interested in scribing may contact her at 404-219-1266 or by e-mail: [revelationfarm1911@gmail.com](mailto:revelationfarm1911@gmail.com).

**RIDERS WITH DISABILITIES:** Disabled riders must have a current USEF Presidential Modification or a current Dispensation Certificate in order to compete with special equipment or circumstances to compete in USEF classes. These letters must accompany their entry forms.

**DOGS MUST BE LEASHED ON A LINE NO LONGER THAN SIX FEET—DOG HANDLER MUST NOT BE MOUNTED ON A HORSE.  
THE USE OF BICYCLES (et al) ARE PROHIBITED ON ANY HORSE PATH OR AROUND BARN AND ARENAS.  
BE AWARE OF RESTRICTED AREAS WHERE ENTERED HORSES MUST NOT GO. DR 121.15. See map.**

**USDF QUALIFYING FEE:** The **Great American Insurance Group/USDF Regional** Championships qualifying fee is \$15 per qualifying test. Sometimes there are valid reasons why a competitor may not want to add the qualifying fee to his/her entry before closing date. Qualifying fees may be added at the show without penalty and may be refunded if the rider notifies the secretary before the start of the class.

**CORRECT NAME?:** Horses entered in qualifying classes must be entered under the same and complete official name registered with USEF and USDF, and the name of the owner must be correct on BOTH USEF and USDF cards. All documentation should match the names of the rider and owner on entry form. These requirements apply to everyone entered in the show.

**ANNOUNCER:** The services of our announcer, Kristen Tracy, are provided as a courtesy for the rider. If you or your horse have a strange-sounding, hard to pronounce name, please go to her and let her know what is correct.

**USEF RULE CHANGES:** Please note any pending rule changes that may affect your participation in our competition. They will be posted on the USEF website, [www.usef.org](http://www.usef.org), Rule Book and Rule Changes.

**EVERY CLASS OFFERED HEREIN WHICH IS COVERED BY THE RULES AND SPECIFICATIONS OF THE CURRENT FEDERATION RULE BOOK WILL BE CONDUCTED AND JUDGED IN ACCORDANCE THEREWITH.**

**RESULTS:** Please be aware that our shows' official results are the scores that are posted on the GHF website's Show Results page and not what you may see streaming on Fox Village or on the GHF/Massey Ferguson electronic scoreboard. There has been some confusion with this in the past for regional qualifying.

**THIS SHOW'S** competition management and USEF licensee (GR131) is **The Good Horseman® Foundation**, a non-profit USDF Group Member Organization founded in 1995. Its director and show manager is Ann Genovese; Director-at-Large is Karen McGoldrick; and Treasurer is Robin Boggs; Membership Chairman is Patricia Powell; Kathryn Patton is secretary. All riders in GHF's recognized shows are eligible for GHF year-end awards, membership not required.

**NO LOOSE DOGS:** Dogs are not permitted to be loose at any time or place on competition grounds and must be on a leash no longer than 6 feet or otherwise contained. Individuals must not lead dogs on a leash while mounted. Dog owners failing to comply with this rule may be subject to penalty under **Chapters 6 and 7**, as well as issuance of warning cards. **GR1301.6**



**AWARDS CEREMONY ADVISORY:** An awards ceremony will be held in **Arena A**, weather permitting, on the second show day following the last ride before the lunch break. This program is for the winners of the show's sponsored awards for rides performed on the first show day. The announcer will call for the winners. Our awards coordinator will give instructions to those participating in the ceremony. Full-dress attire with helmet is required for everyone—coats will not be waived for this event. A winner in full attire may receive an award on foot if it is too hot for him/her to wear a coat while mounted. **All unmounted handlers and assistants must wear helmets—no exceptions—in order to be compliant with USEF rules that cover similar situations.**

**AWARDS CLARIFICATION:** Generally, if the award is a "horse award" the money/check will go to the owner and the sash/ribbon will go to the rider (they can choose to reverse this if they wish). If it is a "rider award," the rider will receive the sash/ribbon and the money/check, even if the owner is another person. If the award is for a GHF division high-scoring horse/rider combination, the owner will receive the sash/ribbon and the rider will receive the dressage pad.

**MATERIALE CLASSES:** There will be two Materiale classes: one for 3, 4 and 5-year-old fillies and mares under saddle; the other for 3, 4 and 5-year-old colts, stallions and geldings under saddle. **The show will issue two 3" by 5" competition numbers** to be worn by the horse on each side of the saddle pad. See **DR.134.4**. See the 2023 Materiale Test Sheet on the USDF website for test directives.

**GREEN HORSE DIVISION:** The show offers an Open division for green horses (see Definitions), using the 2023 USDF Introductory Tests A, B and C (Codes GA, GB and GC) Anyone may enter this division or cross enter into other divisions except the **Introductory Rider Division**.

**INTRODUCTORY RIDER DIVISION:** Classes coded UA, UB and UC comprise the **Introductory Rider Division**. Those entered in this division may not enter classes in any other division. Division may be divided by Adults and Juniors/Young Riders if entries warrant. The division will use 2023 USDF Introductory Tests A, B and C. Riders performing only USDF Introductory tests are exempt from the USEF and USDF non-member fees and USDF Horse ID fee. (See **GR205-GR207**)

**MOTORIZED VEHICLES (Refer to USEF Rules 1301.7 & .8.)** Minors who do not have a valid driver's license which allows them to operate a motorized vehicle in the state in which they reside will not be permitted to operate a motorized vehicle of any kind, including, but not limited to, golf carts, motorcycles, scooters, or farm utility vehicles, on the competition grounds of licensed competitions. Minors who have a valid temporary license may operate the above described motorized vehicles as long as they are accompanied by an adult with a valid driver's license. The parent/legal guardian or individual who signs the entry blank as a parent or guardian of a minor operating a motorized vehicle in violation of this rule are solely responsible for any damages, claims, losses or actions resulting from that operation. Violations of this rule will be cause for penalties against those responsible for the child committing the offense. Wheelchairs and other mobility assistance devices for individuals with disabilities are exempt from this rule.

The **unsafe use of personal electronic transport devices**, as determined by the competition officials and management in their sole discretion, that do not require a driver's license to operate, including but not limited to Segways, hover boards, and single-wheeled scooters, is prohibited on competition grounds. Operating such devices in areas where people and/or horses gather may be deemed "unsafe use" if there is a risk of harm to others. If the operator of the device is a minor, the parent/legal guardian or individual who signs the entry blank as a parent or guardian of a minor operating the device in violation of this rule is accountable and may be subject to penalties. Wheelchairs and other mobility assistance devices for individuals with disabilities are exempt from this rule.

**SHARPS CONTAINERS:** Competition management shall place a minimum of one sharps container per each competition, whether or not stabling is provided. Additionally, at least one sharps container per fifty occupied stalls for the disposal of needles and other disposable sharp instruments in convenient locations in barns housing competition horses. It is competition management's responsibility to replace such containers when full and dispose of them properly. Competition management may fine any individuals including trainers, owners, exhibitors, or their agents up to \$100 for improper disposal of needles or other sharp disposable instruments. **Competition management will place a notice of this requirement either in its prize list or on a specific handout given to trainers at check in at the competition.** If local law has different requirements, local law will prevail. **GR1210.4.**

**EVERY CLASS OFFERED HEREIN WHICH IS COVERED BY THE RULES AND SPECIFICATIONS OF THE CURRENT FEDERATION RULE BOOK WILL BE CONDUCTED AND JUDGED IN ACCORDANCE THEREWITH.**

**ADDRESS:** Make checks payable to **The Good Horseman Foundation** and mail to 4567 Rockbridge Road #297, Pine Lake, GA 30072.

**RETURNED CHECKS:** A \$35 fee will be levied against any competitor whose check is returned from the bank (OC GA 16-9-20).

**RIGHTS:** The competition committee reserves the right to refuse or limit entries, to add or divide classes, to add or substitute judges or make whatever changes are required by circumstances to the competition specifications herein for the improvement of the competition. Entries will be accepted on a first-come basis before the closing date (See **CLOSING DATE** for exception.)





## Classes/Tests for Both Shows, unless otherwise indicated.

*(Please specify by writing “Q” on entry form for classes in which you want to qualify.)*

UA USDF Intro. Walk-Trot Test A—Intro. Rider Division \$35  
 UB USDF Intro. Walk-Trot Test B—Intro. Rider Division \$35  
 UC USDF Intro. Walk/Canter Test C—Intro. Rider Division \$35  
 GA USDF Intro. Walk-Trot Test A—Green Horses (Open) \$35  
 GB USDF Intro. Walk-Trot Test B—Green Horses (Open) \$35  
 GC USDF Intro. Test C (with canter)—Green Horses (Open) \$35  
 UAP USDF Intro. Walk-Trot Test A—Ponies (Open) \$35  
 UBP USDF Intro. Walk-Trot Test B—Ponies (Open) \$35  
 UCP USDF Intro. Test C (with canter)—Ponies (Open) \$35  
 00Q Training Test of Choice Class (Q) \$45  
 01A Training Level Test 1 Adult Amateur \$40  
 01Y Training Level Test 1 Junior/Young Rider \$40  
 01O Training Level Test 1 Open \$45  
 03A Training Level Test 3 Adult Amateur (Q) \$40  
 03Y Training Level Test 3 Junior/Young Rider (Q) \$40  
 03O Training Level Test 3 Open (Q) \$45  
 03P Training Level Test 3 Ponies (Q) \$40  
 10Q First Level Test of Choice (Q) \$45  
 11A First Level Test 1 Adult Amateur \$40  
 11Y First Level Test 1 Junior/Young Rider \$40  
 11O First Level Test 1 Open \$45  
 13A First Level Test 3 Adult Amateur (Q) \$40  
 13Y First Level Test 3 Junior/Young Rider (Q) \$40  
 13O First Level Test 3 Open (Q) \$45  
 13P First Level Test 3 Ponies (Q) \$40  
 20Q Second Level Test of Choice (Q) \$50  
 21A Second Level Test 1 Adult Amateur \$45  
 21Y Second Level Test 1 Jr./YR \$45  
 21O Second Level Test 1 Open \$50  
 23A Second Level Test 3 Adult Amateur (Q) \$45  
**Saturday Test will be a USDF Benefit Class**  
 23Y Second Level Test 3 Jr./YR (Q) \$45  
 23O Second Level Test 3 Open (Q) \$50  
 23P Second Level Test 3 Ponies (Q) \$45  
 30Q Third Test of Choice Class (Q) \$55  
 31A Third Level Test 1 Adult Amateur \$50  
 31Y Third Level Test 1 Jr./YR \$50  
 31O Third Level Test 1 Open \$55  
 33A Third Level Test 3 Adult Amateur (Q) \$50  
 33Y Third Level Test 3 Jr./YR (Q) \$50  
 33O Third Level Test 3 Open (Q) \$55  
 33P Third Level Test 3 Ponies (Q) \$50  
 40Q Fourth Test of Choice (Q) \$55  
 41A Fourth Level Test 1 Adult Amateur \$50  
 41Y Fourth Level Test 1 Jr./YR \$50  
 41O Fourth Level Test 1 Open \$55  
 43A Fourth Level Test 3 AA (Q) \$50  
 43Y Fourth Level Test 3 Jr./YR (Q) \$50  
 43O Fourth Level Test 3 Open (Q) \$55  
 43P Fourth Level Test 3 Ponies (Q) \$50

### FEI-Level Classes:

FEI FEI-Level Test of Choice Class (Q) \$65  
 PGO Prix St. Georges Open (Q) \$65  
 PGA Prix St. Georges AA (Q) \$60  
 PGY Prix St. Georges Jr./YR (Q) \$60  
 61O Intermediaire I Open (Q) \$65  
 61A Intermediaire I AA (Q) \$60  
 61Y Intermediaire I Jr./YR (Q) \$60  
 7AO Intermediaire Test A Open \$65  
 7BO Intermediaire Test B Open \$65  
 72A Intermediaire II Adult Amateur (Q) \$60  
 72O Intermediaire II Open (Q) \$65  
 72Y Intermediaire II Jr./YR (Q) \$60  
 GPA Grand Prix Adult Amateur (Q) \$60  
 GPY Grand Prix Jr./YR (Q) \$60  
 GPO Grand Prix Open (Q) \$65  
 GPS Grand Prix Special Open (Sunday only) \$65

### Freestyles Classes:

FOQ FEI Freestyle Test of Choice Class (Q) \$65  
 9JF FEI Junior Freestyle Test (Sunday) \$60  
 9YF FEI Young Rider Freestyle Test (Sunday) \$60  
 UOQ USDF Freestyle (1st/4th level) Test of Choice Open (Q) \$55  
 UAQ USDF Freestyle (1st/4th level) Test of Choice Adult Amateur (Q) \$50  
 UYQ USDF Freestyle (1st/4th level) Test of Choice Jr./YR (Q) \$50

### Other tests:

E13 Dressage Seat Equitation Class age 13 and younger (Sat.) \$40  
 E14 Dressage Seat Equitation Class ages 14 through 18 (Sat.) \$40

EAA Dressage Seat Equitation AA and Jr./YR (Sat.) \$40  
 MAM Materiale for 3, 4 and 5 YO mares/fillies (Sat.) \$40  
 MAC Materiale for 3, 4 and 5 YO horses colts/stallions/geldings (Sat.) \$40  
 YH4 USEF 4 YR Young Horse Test \$60  
 YH5 FEI 5 YR Final Test \$60  
 YH6 FEI 6 YR Final Test \$60  
 YH7 FEI 7 YH Final Test \$60  
 9YT FEI Young Rider Team Test (PSG) (Saturday) (Q) \$60  
 9YI FEI Young Rider Individual Test (Sunday) \$60  
 9YF FEI Young Rider Freestyle Test (Sunday) \$60  
 9JT FEI Junior Team Test (Q) (Saturday) \$60  
 9JI FEI Junior Individual Test (Sunday) \$60  
 B72 FEI Intermediaire II 16-25 (Q) \$60  
 PRT FEI Pony Rider Team Test (Saturday) \$60  
 PRI FEI Pony Rider Individual Test (Sunday) \$60  
 CHT FEI Children Team Test (Saturday) \$60  
 CHI FEI Children Individual Test (Sunday) \$60  
 BGP FEI Grand Prix 16-25 \$60  
 DEQ USEF Developing Horse Open PSG \$65  
 GPQ USEF Developing Horse Open Grand Prix \$65

*(Please specify by writing “Q” on entry form for classes in which you want to qualify.)*

**Qualifying class (Q) for the 2023 Great American Insurance Group/USDF Regional Championships. Please add the \$15 USDF qualifying fee to each qualifying class entry fee.** For further information, please consult the 2023 Great American Insurance Group/USDF Regional Championship rules page in this prize list.

**Please be aware that qualifying is not mandatory in any class marked for qualifying or in the Dressage or Freestyle Test of Choice classes that are also marked (Q) for qualifying. Tests 1, 2 or 3 in all USEF levels may be ridden in the Test of Choice classes.**

**ATTENTION, COMPETITORS:** Each competitor is responsible for supplying management with correct federation/association numbers (USEF and USDF) for horse, owner, rider and trainer before the days of the competition. The scores of competitors who fail to supply correct numbers may not be counted toward national awards.

Entry No.	Time	Location	Notes
1	10:00	1000	1000
2	10:05	1000	1000
3	10:10	1000	1000
4	10:15	1000	1000
5	10:20	1000	1000
6	10:25	1000	1000
7	10:30	1000	1000
8	10:35	1000	1000
9	10:40	1000	1000
10	10:45	1000	1000
11	10:50	1000	1000
12	10:55	1000	1000
13	11:00	1000	1000
14	11:05	1000	1000
15	11:10	1000	1000
16	11:15	1000	1000
17	11:20	1000	1000
18	11:25	1000	1000
19	11:30	1000	1000
20	11:35	1000	1000
21	11:40	1000	1000
22	11:45	1000	1000
23	11:50	1000	1000
24	11:55	1000	1000
25	12:00	1000	1000
26	12:05	1000	1000
27	12:10	1000	1000
28	12:15	1000	1000
29	12:20	1000	1000
30	12:25	1000	1000
31	12:30	1000	1000
32	12:35	1000	1000
33	12:40	1000	1000
34	12:45	1000	1000
35	12:50	1000	1000
36	12:55	1000	1000
37	13:00	1000	1000
38	13:05	1000	1000
39	13:10	1000	1000
40	13:15	1000	1000
41	13:20	1000	1000
42	13:25	1000	1000
43	13:30	1000	1000
44	13:35	1000	1000
45	13:40	1000	1000
46	13:45	1000	1000
47	13:50	1000	1000
48	13:55	1000	1000
49	14:00	1000	1000
50	14:05	1000	1000
51	14:10	1000	1000
52	14:15	1000	1000
53	14:20	1000	1000
54	14:25	1000	1000
55	14:30	1000	1000
56	14:35	1000	1000
57	14:40	1000	1000
58	14:45	1000	1000
59	14:50	1000	1000
60	14:55	1000	1000
61	15:00	1000	1000
62	15:05	1000	1000
63	15:10	1000	1000
64	15:15	1000	1000
65	15:20	1000	1000
66	15:25	1000	1000
67	15:30	1000	1000
68	15:35	1000	1000
69	15:40	1000	1000
70	15:45	1000	1000
71	15:50	1000	1000
72	15:55	1000	1000
73	16:00	1000	1000
74	16:05	1000	1000
75	16:10	1000	1000
76	16:15	1000	1000
77	16:20	1000	1000
78	16:25	1000	1000
79	16:30	1000	1000
80	16:35	1000	1000
81	16:40	1000	1000
82	16:45	1000	1000
83	16:50	1000	1000
84	16:55	1000	1000
85	17:00	1000	1000
86	17:05	1000	1000
87	17:10	1000	1000
88	17:15	1000	1000

## Georgia International Horse Park, Conyers, GA

Entries may not be accepted without all signatures on both signature pages, full payment of fees and copies of all certification including USEF/USDF cards and Coggins and USDF horse recording and/or registration certificates. Those entering qualifying classes should read the USDF Regional Championships information page included in this prize list. **One entry form per horse/rider combination.**

Show Date: April 29, 2023

Date Rec'd

Amt.

Coggins	HC
---------	----

Rhino Shot record

Signatures \_\_\_\_\_

SS Certified? \_\_\_\_\_ Awards app? \_\_\_\_\_

Rider	Owner
Jr/YR Date of Birth _____	Street Address
Street Address	
City, State, ZIP	City, State, ZIP
Phones:	Phones:
_____ home	_____ home
_____ work	_____ work
E-mail (please print):	E-mail (please print):
_____	_____
USEF card (enclose copy):	USEF card (enclose copy):
USDF card (enclose copy):	USDF card (enclose copy):

Trainer (person responsible for horse)	Coach (paid for instruction at show)
Street Address	Street Address
City,State,ZIP	City,State,ZIP
Phones: _____ home _____ work E-mail (please print): _____ USEF card (enclose copy): _____	Phones: _____ home _____ work E-mail (please print): _____ USEF card (enclose copy): _____

Day	Class Code	Class Description	Q?	Fees

Horse's Name \_\_\_\_\_ ☐ check if for sale

Breed \_\_\_\_\_ Sex \_\_\_\_\_ Color \_\_\_\_\_ Height \_\_\_\_\_ Year foaled \_\_\_\_\_

Horse's USEF No. (include copy) \_\_\_\_\_

Horse's USDF No. (include copy) \_\_\_\_\_

Name of Sire \_\_\_\_\_ Dam \_\_\_\_\_

Breeder \_\_\_\_\_ Country where foaled \_\_\_\_\_

**Arriving** (circle one) What day? → **Thur.** **Fri.** **Sat.** **Sun.**

**Leaving** (circle one) What day? → **Saturday** **Sunday**

**Stabling:** For large groups, please create stabling map and attach to entry form. Please use one person's name (not farm name) for groups.

Group Name: \_\_\_\_\_

Visa/MC No. \_\_\_\_\_

Exp. date \_\_\_\_\_ CVS Code \_\_\_\_\_ add \$10 EFT Fee

Name on card \_\_\_\_\_

Zip Code where credit card statement is received \_\_\_\_\_

Total Class Fees (Add \$15 to class fee for USDF qualifying)	
USEF "Show Pass" (new rule: must apply on USEF website)	—00—
USEF Federation Fee Per Horse (D&M fee <b>\$8.00</b> )	<b>\$23.00</b>
USDF Non-Member fee ( <b>\$35.00</b> ) per rider and owner	
USDF Horse ID (HID) number fee <b>\$35</b> (for unregistered horses)	
Stabling Fee (See <b>STABLING</b> )	
Tack Stall Fee ( <b>\$95.00</b> /per show) No shavings.	
Extra shavings delivered at <b>\$10.00</b> per bag (How many bags?_____)	
Late Fee <b>\$20.00</b> per entry (for entries accepted after closing date)	
Office Fee (per entry) (includes Perfekt Paket refund)	<b>\$40.00</b>
Night Watch fee per horse for weekend	<b>\$10.00</b>
EFT fee (for Visa/MC payment) <b>\$10.00</b>	
EMT Fee (per entry)	<b>\$5.00</b>
Camper/RV Hook-up ( <b>\$60/night</b> ) (How many nights? _____) Vehicle Description_____	
2023 GHF Membership/\$40 single; \$55 family (optional)	
Total	



Entry No.

# The Good Horseman® Dressage #2 Show

## Georgia International Horse Park, Conyers, GA

## ENTRY FORM

Entries may not be accepted without all signatures on both signature pages, full payment of fees and copies of all certification including USEF/USDF cards and Coggins and USDF horse recording and/or registration certificates. Those entering qualifying classes should read the USDF Regional Championships information page included in this prize list. **One entry form per horse/rider combination.**

**OFFICE USE ONLY**

Show Date: April 30, 2023

Date Rec'd \_\_\_\_\_

Amt. \_\_\_\_\_

Coggins \_\_\_\_\_ HC \_\_\_\_\_

Rhino Shot record \_\_\_\_\_

Signatures \_\_\_\_\_

SS Certified? \_\_\_\_\_ Awards app? \_\_\_\_\_

**USEF Level 3 Competition      USEF #342431**

Rider	Owner	Trainer (person responsible for horse)		Coach (paid for instruction at show)		
Jr/YR Date of Birth _____	Street Address	Street Address		Street Address		
Street Address		City,State,ZIP		City,State,ZIP		
City,State,ZIP	City,State,ZIP	Phones: _____ home _____ work E-mail (please print): _____ USEF card (enclose copy): _____ USDF card (enclose copy):		Phones: _____ home _____ work E-mail (please print): _____ USEF card (enclose copy): _____ USEF card (enclose copy):		
		Day	Class Code	Class Description	Q?	Fees

## STABLING and HORSE INFORMATION FORM

Horse's Name ☐ check if for sale

Breed	Sex	Color	Height	Year foaled
-------	-----	-------	--------	-------------

Horse's USEF No. (include copy)

Horse's USDF No. (include copy)

Name of Sire \_\_\_\_\_ Dam \_\_\_\_\_

Breeder Country where foaled

**Arriving** (circle one) What day? → **Thur.** **Fri.** **Sat.** **Sun.**

**Leaving** ( circle one) What day? → **Saturday** **Sunday**

**Stabling:** For large groups, please create stabling map and attach to entry form. Please use one person's name (not farm name) for groups.

Group Name:

**Federation Entry Agreement**—I have read the United States Equestrian Federation, Inc. (the “Federation”) Entry Agreement (GR906.4) as printed in the Prize List for [insert name here] (“Competition”) and agree to all of its provisions. I understand and agree that by entering this Competition, I am subject to Federation Rules, the Prize List, and local rules of the competition. I agree to waive the right to the use of my photos from the competition, and agree that any actions against the Federation must be brought in New York State.

Visa/MC No. \_\_\_\_\_  
 Exp. date \_\_\_\_\_ CVS Code \_\_\_\_\_ \$10 EFT Fee ☐  
 Name on card \_\_\_\_\_  
 Zip Code where credit card statement is received \_\_\_\_\_

Day	Class Code	Class Description	Q?	Fees
<b>Total Class Fees (Add \$15 to class fee for USDF qualifying)</b>				
USEF "Show Pass" (new rule: must apply on USEF website)				—00—
USEF Federation Fee Per Horse (D&M fee <b>\$8.00</b> ) Per show				<b>\$23.00</b>
USDF Non-Member fee ( <b>\$35.00</b> ) per rider and owner				
USDF Horse ID (HID) number fee <b>\$35</b> (for unregistered horses)				
Stabling Fee (See <b>STABLING</b> ) (pay on #1 Show entry)				
Tack Stall Fee ( <b>\$95.00</b> /per show) (pay on #1 show entry)				
Extra shavings delivered at <b>\$10.00</b> per bag (How many bags?_____)				
Late Fee <b>\$20.00</b> per entry (for entries accepted after closing date)				
Office Fee (per entry)				<b>\$30.00</b>
Night Watch fee per horse for weekend				<b>\$10.00</b>
EFT fee (for Visa/MC payment) <b>\$10.00</b>				
EMT Fee (per entry)				<b>\$5.00</b>
Camper/RV Hook-up ( <b>\$60/night</b> ) (How many nights? _____) Vehicle Description_____				
2023 GHF Membership/\$40 single; \$55 family (optional)				
Total				



## FEDERATION ENTRY AGREEMENT

By entering a Federation-licensed Competition and signing this entry blank as the Owner, Lessee, Trainer, Manager, Agent, Coach, Driver, Rider, Handler, Vaultor or Longeur and on behalf of myself and my principals, representatives, employees and agents, I agree that I am subject to the Bylaws and Rules of The United States Equestrian Federation, Inc. (the "Federation") and the local rules of GHF Dressage Shows (Competition). I agree to be bound by the Bylaws and Rules of the Federation and of the competition. I will accept as final the decision of the Hearing Committee on any question arising under the Rules, and agree to release and hold harmless the competition, the Federation, their officials, directors and employees for any action taken under the Rules. I represent that I am eligible to enter and/or participate under the Rules, and every horse I am entering is eligible as entered. I also agree that as a condition of and in consideration of acceptance of entry, the Federation and/or the Competition may use or assign photographs, videos, audios, cable - casts, broadcasts, internet, film, new media or other likenesses of me and my horse taken during the course of the competition for the promotion, coverage or benefit of the competition, sport, or the Federation. Those likenesses shall not be used to advertise a product and they may not be used in such a way as to jeopardize amateur status. I hereby expressly and irrevocably waive and release any rights in connection with such use, including any claim to compensation, invasion of privacy, right of publicity, or to misappropriation. The construction and application of Federation rules are governed by the laws of the State of New York, and any action instituted against the Federation must be filed in New York State. See GR908.4.

**BY SIGNING BELOW, I AGREE** that I have read, understand, and agree to be bound by all applicable Federation Bylaws, rules, and policies including the USEF Safe Sport Policy and Minor Athlete Abuse Prevention Policies (MAAPP) as published at [www.usef.org](http://www.usef.org), as amended from time to time, as well as all terms and provisions of this Prize List. If I am signing and submitting this Agreement electronically, I acknowledge that my electronic signature shall have the same validity, force and effect as if I affixed my signature by my own hand.

**RIDER/DRIVER/HANDLER/VAULTER/LONGEUR** (mandatory)

Signature: \_\_\_\_\_

Print Name: \_\_\_\_\_

**TRAINER** (mandatory)

Signature: \_\_\_\_\_

Print Name: \_\_\_\_\_

**OWNER/AGENT** (mandatory)

Signature: \_\_\_\_\_

Print Name: \_\_\_\_\_

**COACH** (if applicable)

Signature: \_\_\_\_\_

Print Name: \_\_\_\_\_

Parent/Guardian Signature: (Required if Rider/Driver/Handler/Vaultor/Longeur is a minor) \_\_\_\_\_

Print Parent//Guardian Name: \_\_\_\_\_ Emergency Contact Phone No. \_\_\_\_\_

Is Rider/Driver/Vaultor a U.S. Citizen: ☐ Yes ☐ No

**ADVISORY:** There are two signature pages for competitors to sign: this one and the one on the next page, Page 17.)

**ADVISORY:** There are two signature pages. You also must sign the following page by filling in all spaces.



## WAIVER AND RELEASE OF LIABILITY, ASSUMPTION OF RISK AND INDEMNITY AGREEMENT

For and in consideration of United States Equestrian Federation, Inc. dba US Equestrian ("USEF") allowing me, the undersigned, to participate in any capacity (including as a rider, driver, handler, vaulter, longeur, lessee, owner, agent, coach, official, trainer or volunteer) in a USEF sanctioned, licensed or approved event or activity, including but not limited to equestrian clinics, practices, shows, competitions and related or incidental activities and **GHE Dressage Shows** ("USEF Event" or "USEF Events"); I, for myself, and on behalf of my spouse, children, heirs and next of kin, and any legal and personal representatives, executors, administrators, successors, and assigns, hereby agree to and make the following contractual representations pursuant to this Agreement (the "Agreement"):

A. RULES AND REGULATIONS: I hereby agree that I have read, understand, and agree to be bound by all applicable Federation Bylaws, rules, and policies including the USEF Safe Sport Policy and Minor Athlete Abuse Prevention Policies (MAAPP) as published at [www.usef.org](http://www.usef.org), as amended from time to time.

B. ACKNOWLEDGMENT OF RISK: I knowingly, willingly, and voluntarily acknowledge the inherent risks associated with the sport of equestrian and know that horseback riding and related equestrian activities are inherently dangerous, and that participation in any USEF Event involves risks and dangers including, without limitation, the potential for serious bodily injury (including broken bones, head or neck injuries), sickness and disease (including communicable diseases), trauma, pain & suffering, permanent disability, paralysis and death; loss of or damage to personal property (including my mount & equipment) arising out of the unpredictable behavior of horses; exposure to extreme conditions and circumstances; accidents involving other participants, event staff, volunteers or spectators; contact or collision with other participants and horses, natural or manmade objects; adverse weather conditions; facilities issues and premises conditions; failure of protective equipment (including helmets); inadequate safety measures; participants of varying skill levels; situations beyond the immediate control of the USEF Event organizers and competition management; and other undefined, not readily foreseeable and presently unknown risks and dangers ("Risks").

### EQUINE ACTIVITY LIABILITY ACT WARNING:

CAUTION: HORSEBACK RIDING AND EQUINE ACTIVITIES CAN BE DANGEROUS. RIDE AT YOUR OWN RISK.

**Under the laws of most States, an equine activity sponsor or equine professional is not liable for any injury to, or the death of, a participant in equine activities resulting from the inherent risks of equine activities.**

C. ASSUMPTION OF RISK: I understand that the aforementioned Risks may be caused in whole or in part or result directly or indirectly from the negligence of my own actions or inactions, the actions or inactions of others participating in the USEF Events, or the negligent acts or omissions of the Released Parties defined below, and I hereby voluntarily and knowingly assume all such Risks and responsibility for any damages, liabilities, losses, or expenses that I incur as a result of my participation in any USEF Events. I also agree to be responsible for any injury or damage caused by me, my horse, my employees or contractors under my direction and control at any USEF Event.

D. WAIVER AND RELEASE OF LIABILITY, HOLD HARMLESS AND INDEMNITY: In conjunction with my participation in any USEF Event, I hereby release, waive and covenant not to sue, and further agree to indemnify, defend and hold harmless the following parties: USEF, USEF Recognized Affiliate Associations, the United States Olympic & Paralympic Committee (USOPC), USEF clubs, members, Event participants (including athletes/riders, coaches, trainers, judges/officials, and other personnel), the Event owner, licensee, and competition managers; the promoters, sponsors, or advertisers of any USEF Event; any charity or other beneficiary which may benefit from the USEF Event; the owners, managers, or lessors of any facilities or premises where a USEF Event may be held; and all directors, officers, employees, agents, contractors, and volunteers of any of the aforementioned parties (**Individually and Collectively, the "Released Parties" or "Event Organizers"**), with respect to any liability, claim(s), demand(s), cause(s) of action, damage(s), loss, or expense (including court costs and reasonable attorney fees) of any kind or nature ("**Liability**") which may arise out of, result from, or relate in any way to my participation in the USEF Events, including claims for Liability caused in whole or in part by the negligent acts or omissions of the Released Parties.

E. COMPLETE AGREEMENT AND SEVERABILITY CLAUSE: This Agreement represents the complete understanding between the parties regarding these issues and no oral representations, statements or inducements have been made apart from this Agreement. If any provision of this Agreement is held to be unlawful, void, or for any reason unenforceable, then that provision shall be deemed severable from this Agreement and shall not affect the validity and enforceability of any remaining provisions.

**I HAVE CAREFULLY READ THIS DOCUMENT IN ITS ENTIRETY, UNDERSTAND ALL OF ITS TERMS AND CONDITIONS, AND KNOW IT CONTAINS AN ASSUMPTION OF RISK, RELEASE AND WAIVER FROM LIABILITY, AS WELL AS A HOLD HARMLESS AND INDEMNIFICATION OBLIGATIONS.**

By signing below, I (as the participant or as the Parent/Legal Guardian of the minor identified below) hereby accept and agree to the terms and conditions of this Agreement in connection with my (or the minor's) participation in any USEF Event. If, despite this Agreement, I, or anyone on my behalf or the minor's behalf, makes a claim for Liability against any of the Released Parties, I will indemnify, defend and hold harmless each of the Released Parties from any such Liabilities as the result of such claim.

**The parties agree that this agreement may be electronically signed. The parties agree that the electronic signatures appearing on this agreement are the same as handwritten signatures for the purposes of validity, enforceability, and admissibility.**

☐ RIDER/DRIVER/HANDLER/VAULTER/LONGEUR ☐ OWNER ☐ TRAINER ☐ OFFICIAL ☐ STAFF ☐ VOLUNTEER ☐ COACH (IF APPLICABLE)

Signature: \_\_\_\_\_ Date: \_\_\_\_\_

Print Name: \_\_\_\_\_

Parent/Guardian Signature: (Required if Rider/Driver/Handler/Vaulter/Longeur is a minor) \_\_\_\_\_ Date: \_\_\_\_\_

Print Parent//Guardian Name: \_\_\_\_\_ Emergency Contact Phone No. \_\_\_\_\_

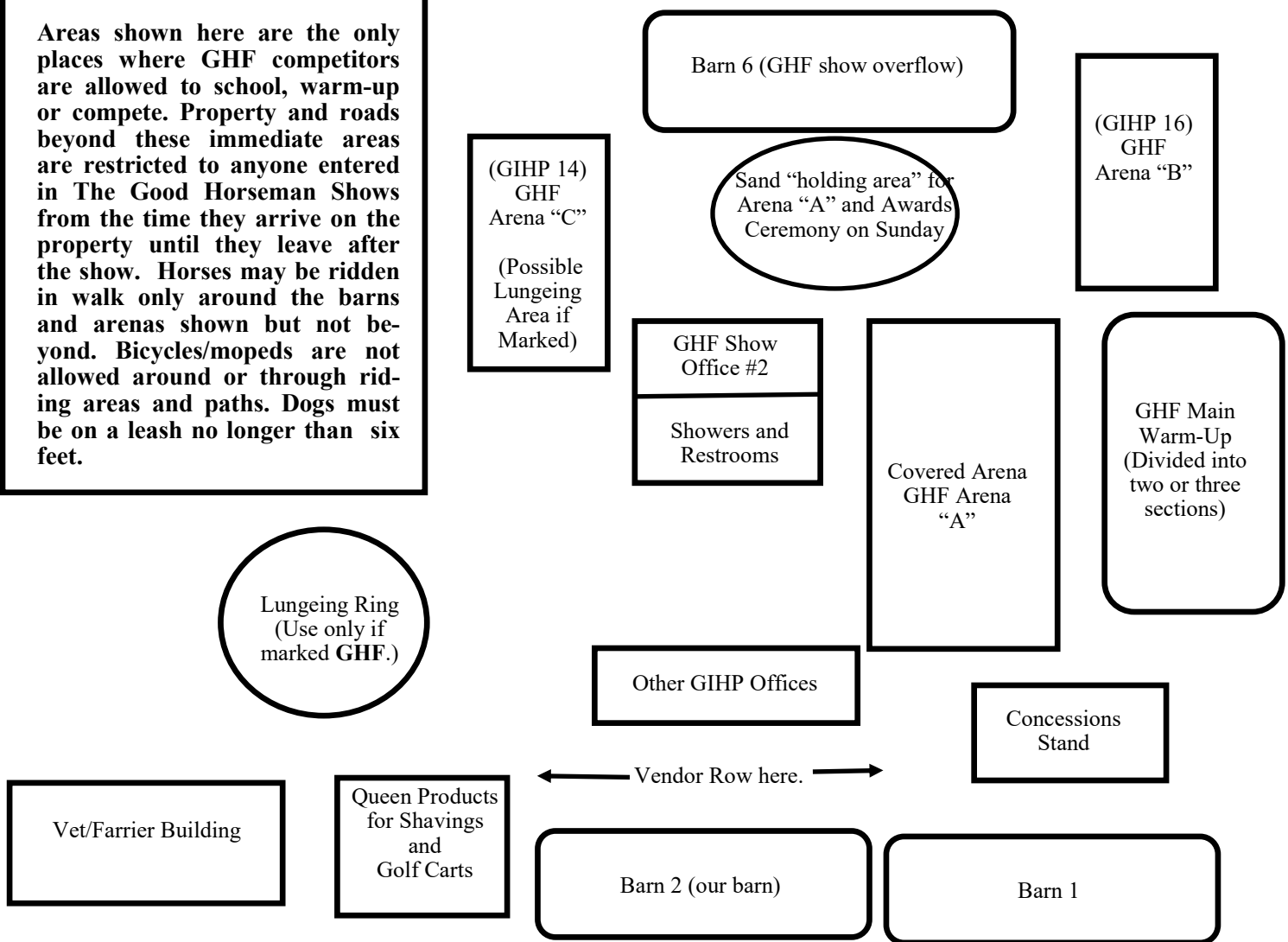
6.17.20

UNITED STATES EQUESTRIAN FEDERATION : 4001 WING COMMANDER WAY : LEXINGTON, KY 40511 : 859.258.2472 : FAX 859.231.6662 : USEF.ORG

**Off-Limits Details**  
For GHF Shows at GIHP

Areas shown here are the only places where GHF competitors are allowed to school, warm-up or compete. Property and roads beyond these immediate areas are restricted to anyone entered in The Good Horseman Shows from the time they arrive on the property until they leave after the show. Horses may be ridden in walk only around the barns and arenas shown but not beyond. Bicycles/mopeds are not allowed around or through riding areas and paths. Dogs must be on a leash no longer than six feet.

# GHF SECURE AREAS MAP



USDF Bronze & Silver Medalist, USDF L Graduate\*, & Trainer



**Danielle Perry**

RevelationFarm1911@gmail.com

404.219.1266

Danielle Perry implements a unique style when working with all types of riders and horses - dressage, eventing, western dressage, pony club, beginners - advanced, young & older horses!



**RevelationFarm.com**



# FEDERATION ENTRY AGREEMENT

By entering a Federation-licensed Competition and signing this entry blank as the Owner, Lessee, Trainer, Manager, Agent, Coach, Driver, Rider, Handler, Vaultor or Longeur and on behalf of myself and my principals, representatives, employees and agents, I agree that I am subject to the Bylaws and Rules of The United States Equestrian Federation, Inc. (the "Federation") and the local rules of the competition. I agree to be bound by the Bylaws and Rules of the Federation and of the competition. I will accept as final the decision of the Hearing Committee on any question arising under the Rules, and agree to release and hold harmless the competition, the Federation, their officials, directors and employees for any action taken under the Rules. I represent that I am eligible to enter and/or participate under the Rules, and every horse I am entering is eligible as entered.

I also agree that as a condition of and in consideration of acceptance of entry, the Federation and/or the Competition may use or assign photographs, videos, audios, cablecasts, broadcasts, internet, film, new media or other likenesses of me and my horse taken during the course of the competition for the promotion, coverage or benefit of the competition, sport, or the Federation. Those likenesses shall not be used to advertise a product and they may not be used in such a way as to jeopardize amateur status. I hereby expressly and irrevocably waive and release any rights in connection with such use, including any claim to compensation, invasion of privacy, right of publicity, or to misappropriation. The construction and application of Federation rules are governed by the laws of the State of New York, and any action instituted against the Federation must be filed in New York State. See GR908.4.

## 2023 GHF YEAR-END AWARDS RULES

To be eligible for these awards, riders do not have to be GHF members nor do they have to submit their scores. Scores from the three 2022 Good Horseman USEF/USDF-recognized shows (February, April and July) will be used. Final tabulations will be done by the GHF office at the end of the year following the September show.

It is the competitors' responsibility to check their scores that are published when the year-end results are posted on the GHF website's Awards page following the last GHF show of the year and to report any possible errors to the GHF office.

A special framed certificate will be mailed to the top horse/rider combination achieving the highest **percentile** (averaged percentage) in the following levels: Training through Fourth Level, Prix St. Georges, Intermediaire I, II, A and B, Grand Prix and Freestyle (any level); along with special ribbons to third place.. The four Intermediaire tests will count as one level. Scores used will be from the Open, Adult Amateur and Jr./YR divisions only.

To compete for this award, riders must have at least three scores of 60% and above from the same level to be averaged (no scores will be dropped). Results below 60% will not be awarded.

Also awarded will be **The Good Horseman Medal** which will be given to riders achieving scores of 75% or better at Training through the FEI levels (Adult Amateur, Jr./Young Rider and Open divisions), excluding Freestyle, Introductory, the FEI Young Horse and Rider tests which are scored differently and cannot be compared.

Riders achieving scores of 80.000% and above will receive the GHF **"Gold Medal"**.

## USDF Statement on Animal Welfare

The United States Dressage Federation, Inc. (USDF), a federation of individual members and over 100 independent organizations throughout the United States, supports the concept of ethical treatment of animals.

Dressage is a classical method of training horses, based upon the horse's natural responses, as carried out in a gradual, planned program during which the horse's athletic abilities are improved in a systematic manner. As a result, the horse becomes capable, comfortable, and responsive in partnership with the rider without the use of force. Dressage competition at various levels of achievement is the ultimate test of the training program to determine whether the desired harmony between horse and rider has been achieved.

The rules pertaining to dressage competition prohibit the use of artificial appliances, training aids, and drugs, which would force the horse to submit. Instead, the emphasis is upon training and a cooperative partnership with the rider. Major competitions are carefully monitored to assure that there is no unnecessary force or harshness displayed.

Unlike other horse sports in which horses enter training at a relatively immature state, dressage training is usually not seriously begun until the horse is three or four. The top levels of achievement require five or more years of progressive training and it is not unusual to see horses in international competition in their late teens. This, in itself, places a premium on good care and soundness throughout the horse's life.

While supporting the concept of animal welfare in its broadest form, the United States Dressage Federation, Inc., also recognizes that it is unrealistic to ascribe human emotions and responses to the horse which in its wild state is a creature of flight, living a hard and precarious existence. Under domestication, the horse is assured of ample food, water, and shelter, as well as protection against infectious diseases and damaging parasites, thus leading a longer and healthier life with a high rate of survival.

As an educational organization, USDF has numerous programs, which teach people how to pursue the accepted, humane training methods. A program of certifying instructors also emphasizes protecting the horse's welfare in pursuit of dressage training.

United States Dressage Federation  
4051 Iron Works Parkway, Lexington, KY 40511  
Phone: 859-971-2277, Fax: 859-971-7722, [usdressage@usdf.org](mailto:usdressage@usdf.org), [www.usdf.org](http://www.usdf.org)





# UNITED STATES DRESSAGE FEDERATION™

## Regional Adult Amateur Equitation Program

The USDF Regional Adult Amateur Equitation Program recognizes adult amateurs competing in equitation and promotes correct seat, position, and use of the aids in dressage.

An Adult Amateur Equitation Regional Final class presented by Big Dee's Tack and Vet Supply will be held in conjunction with each of the nine USDF Regional Dressage Championship competitions, providing adult amateurs with additional opportunity for recognition.

Adult amateurs wishing to qualify to compete in an Adult Amateur Equitation Regional Final may do so by meeting the following requirements.

### **Qualifying Requirements**

To be eligible for the USDF Adult Amateur Equitation Regional Final class, rider must have

- a) Earned a score of 70% or higher in any dressage seat equitation class (except walk/trot) at a USEF-licensed/USDF-recognized Dressage competition within the qualifying period of the applicable regional championship.

**or**

- b) Qualified to compete in any regional dressage championship class (excluding freestyles).

### **Membership Requirements**

- Rider must have a USDF Participating Membership at the time the qualifying score is earned, and at the time of the Regional Final class.
- Rider must be an adult amateur, in accordance with GR1306 of the USEF rules, and be designated with USEF as an adult amateur when the score is earned, and at the time of the Regional Final class.
- Owner must have a USDF Participating or Business Membership when the qualifying score is earned, and at the time of the Regional Final class.
- Horse must have a USDF Lifetime Horse Registration when the qualifying score is earned, and at the time of the Regional Final class.

The USDF Regional Adult Amateur Equitation Program rules and information can be found on the USDF [website](#).

Rev. 2/8/2019

# The Good Horseman® Dressage at the Horse Park #1 and #2 Shows

USEF/USDF #285468 and 342431 AQHA #910566 and #901298

April 29-30, 2023

Georgia International Horse Park  
Conyers, GA 30013



## Attention AQHA Competitors

If you are going to compete in Training Level and above and want to earn AQHA points, you must fill out this form and attach to your entry form.

**An additional fee of \$15 per show must be submitted with entry for AQHA credit.**

Rider Name: \_\_\_\_\_ AQHA # \_\_\_\_\_

**Copy of Membership Card**

Horse Registered Name: \_\_\_\_\_ AQHA # \_\_\_\_\_

**Copy of AQHA Registration Paper**

Address: \_\_\_\_\_

\_\_\_\_\_

Email Address: \_\_\_\_\_ Phone # \_\_\_\_\_

## Awards and Points

AQHA points earned in dressage and western dressage count towards Register of Merits, Superiors and other AQHA awards.

Points are based on percentage scoring, and the number of horses in a class does not determine points earned. Refer to the AQHA Official Handbook of Rules and Regulations (/rulebook) for details.

**See next page for information about AQHA's participation  
in the USDF All Breeds Awards Program.**

## Region 3 Chooses Mark Fornwalt As GMO “Volunteer of the Year”

Mark Fornwalt, GHF Chief Steward and USEF Emergency Coordinator, drove himself to Lexington, KY, last December where he received a very special award: USDF Region 3 GMO “Volunteer of the Year.”

He was chosen for his many years of work with two Atlanta area USDF Group Member Organizations: The Georgia Dressage and Combined Training Association and The Good Horseman Foundation.

The crystal-on-a-pedestal award was proposed by GDCTA President Caren Caverly in conjunction with The Good Horseman Foundation and presented at the 2022 USDF Annual Convention in Lexington, KY.

Mark has been volunteering for GHF shows since before the 1996 Olympic Games which was held at the horse park. He has always been the go-to guy when something goes wrong—he can always fix it! And all the judges know him because they depend on him to know how to get to the show from the airport—and to dinner! And he makes sure they do not miss their flights at the end of the shows.

Our shows would not get off the ground without his energy and guidance which is appreciated more than he knows



### USDF All Breeds Awards Program

AQHA is proud to participate in the USDF All Breed Awards program (<https://www.usdf.org/awards/all-breeds/all-breeds.asp>). This program is designed to recognize the accomplishments of specific breeds in dressage; these awards are presented to horses declared for a participating registry/organization (PO) with USDF. While “Open” is the standard division and “Training through Grand Prix” are the standard levels for all-breeds recognition, optional division awards can be presented in the following categories:

freestyle, adult amateur, junior/young rider, vintage cup, para-dressage rider of the year, USEF four-year-old, FEI five- and six-year-old, materiale, and dressage sport horse breeding.

Rules, requirements and eligibility can be found at <https://www.usdf.org/awards/all-breeds/all-breeds.asp> (<https://www.usdf.org/awards/all-breeds/all-breeds.asp>).





# Application for the Jockey Club Thoroughbred Incentive Program (T.I.P) Awards



## T.I.P. Entry Information Form

This form should be submitted by an exhibitor directly to a horse show offering T.I.P. classes and awards. For purposes of eligibility for all T.I.P. classes and awards, a "Thoroughbred" is defined as any horse that has been registered with The Jockey Club.

**Exhibitors: Please fill out this section, attach a copy of your proof of eligibility and submit both this form and the copy to the Horse Show with your entry and/or bring the originals to the horse show for presentation upon request.**

### **Proof of Eligibility:**

- The Jockey Club Certificate of Foal Registration; or
- The horse's lip tattoo, the horse's 5-cross pedigree and the successful tattoo lookup result from The Jockey Club's Tattoo Identification Services (located at [registry.jockeyclub.com](http://registry.jockeyclub.com)); or
- A letter from The Jockey Club acknowledging eligibility for participation in T.I.P. (please email [tjctip@jockeyclub.com](mailto:tjctip@jockeyclub.com) to obtain).

Horse Show Name & Date	2023 The Good Horseman's Dressage at the Horse Park
Your Name	
Thoroughbred's Registered Name	
Thoroughbred's Show Name	
Thoroughbred's Registration No. or Tattoo No.	
Sire's Name	
Dam's Name	

### **For Horse Show Use only:**

**Based on the information provided, the above referenced Thoroughbred is**

☐ **Eligible**      ☐ **Ineligible**

Please return these forms (or a copy thereof) upon the completion of the horse show to The Jockey Club Thoroughbred Incentive Program, 821 Corporate Dr., Lexington, KY 40503.



## \$150 Friesian/Baroque High-Score Awards

### *Sponsored by CBH International, Inc.*

### APPLICATION

This form should be submitted by the exhibitor directly to the show offering the \$150 Friesian/Baroque Awards. For purposes of eligibility for this award, exhibitors must submit this form, accompanied by valid registration certificates from the following registries: Friesian and Baroque (limited to PRE, Andalusian, Lusitano and Lippizan.)

Exhibitors: Please fill out this section, attach a copy of your proof of eligibility and submit both this form and a copy of the registration certificate to the show secretary along with your regular entry form.

***Details:***

\*Awards will be given to the top six registered Friesian or Baroque horses in the Saturday show in Training Level through Fourth Level, PSG through Grand Prix (Adult Amateur, Open and Junior/Young Rider classes). Introductory, Green Horse, Freestyle, Rider and Young Horse tests do not count.

\*There must be at least three eligible Friesian or Baroque horses competing for money to be given.

\***CBH International, Inc.**, will give \$100 and the special CBH Medal to the 1st place winner and \$50 to the second place winner, along with special neck sashes.

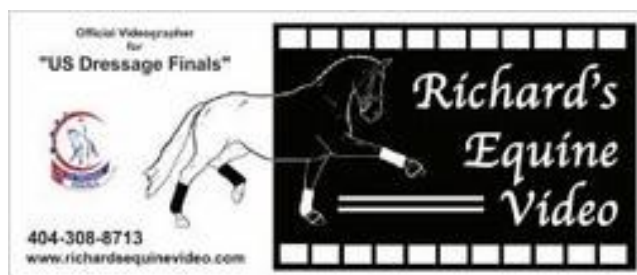
\*A mounted awards ceremony will be held on Sunday right after lunch. Must be in Sunday show to receive awards.

\*There is no special fee only the class fee. Only one highest score will be used per horse. The results will be “weighted” which means that the higher the test the more percentage points the performance receives, i.e. Training Level, no additional points; First Level, 1 point; Second Level, 2 points; Third Level 3 points; Fourth Level 4 points; FEI Level 5 points. The registration papers should accompany entry form.



Show Name	The Good Horseman's Dressage at the Horse Park
Rider's Name	
Owner's Name	
Horse's Registered Name	
Horse's Show Name (if different)	
Horse's Registration Number	
Sire's Name	
Dam's Name	
Breeder's Name	





## \$50 Award for High Scoring Dutch Warmblood Horse *Sponsored by Richard's Equine Video* APPLICATION

This form should be submitted by the exhibitor directly to the show offering the \$50 Dutch Warmblood Award. For purposes of eligibility for this award, exhibitors must submit this form, accompanied by valid registration certificates from the following registries: KWPN and KWPN-NA.

Exhibitors: Please fill out this section, attach a copy of your proof of eligibility and submit both this form and a copy of the registration certificate to the show secretary along with your regular entry form.

***Details:***

\*The award will be given to the top KWPN and KWPN-NA horse on Saturday at the April and July shows, in Training through Fourth Level, PSG through Grand Prix classes (Adult Amateur, Open and Junior/Young Rider only divisions). Introductory, Green Horse, Freestyle, Rider and Young Horse tests do not count.

\*A mounted awards ceremony will be held on Sunday right after lunch, weather permitting.

\*There is no special fee only the class fee. The registration papers should accompany entry form.

Show Name	The Good Horseman's Dressage at the Horse Park
Rider's Name	
Owner's Name	
Horse's Registered Name	
Horse's Show Name (if different)	
Horse's Registration No.	
Sire's Name	
Dam's Name	
Breeder's Name	



# The Good Horseman® Foundation

E-mail: [goodhorseman@att.net](mailto:goodhorseman@att.net)

[www.goodhorseman.org](http://www.goodhorseman.org)

cell: 404-289-9328

OFFICE USE ONLY:

Date received \_\_\_\_\_

Amount \_\_\_\_\_

## 2023 MEMBERSHIP FORM

**The Good Horseman® Foundation** is a non-profit, tax-exempt, 501 (c) (3) organization of experienced members of the dressage community, including equine professionals, dressage instructors, trainers, competitors, judges, "L" Graduates and members of dressage competition management. The Foundation is a Group Member Organization (GMO) of The United States Dressage Federation and participates in USDF programs such as the Instructor Certification and the "L" Judges Education Programs. Your membership makes you a GROUP MEMBER of USDF. All members are eligible to compete for USDF rider awards, adult camps and will receive a subscription to the USDF national newsletter. Those wishing to qualify for the USDF Regional Championships must apply directly to USDF to become a PARTICIPATING MEMBER to be eligible.

**The amount of your GHF annual dues is \$40 single membership (\$24 goes to USDF per person and the balance remains in the Foundation as your dues); \$55 family membership for two listed persons (an extra \$10 is sent to USDF for the added membership).**

The objective of the Foundation is for the preservation and protection of the sport and art of dressage and to encourage its development to the highest levels. The Foundation's work will be limited to the organization of dressage competitions and the creation of educational opportunities such as seminars, clinics, scholarships and forums. An annual meeting is held every January, but no monthly meetings since most of our work is done by phone and e-mail.

Membership dues and renewals will be due Nov. 1st for the next year. Those joining for the first time after Sept. 1 will members for the next year.

There will be no newsletter as such but you will be on a GHF e-mail list and will receive prize lists for our upcoming shows by e-mail. Information about upcoming activities can be found on our website.

Riders competing in GHF Schooling Shows will be automatically enrolled as GHF members for that year if they complete this membership form and attach it to their entry form. (revised 5-1-2020)

Print Name \_\_\_\_\_ Jr./YR Rider Birth Date (for USDF) \_\_\_\_\_ USDF No. \_\_\_\_\_

Please check: ☐ \$40 single membership or ☐ \$55 family membership: ☐ Joined at show? ☐ Renewed at show? ☐ New? ☐ Renewal? ☐ Lapsed?

Address \_\_\_\_\_

City \_\_\_\_\_ State \_\_\_\_\_ ZIP \_\_\_\_\_

Phone \_\_\_\_\_ (home) \_\_\_\_\_ (work)

E-mail address (Please print clearly) \_\_\_\_\_

Would you like to volunteer at GHF events? ☐ Yes ☐ No. If yes, please list your interests and abilities:

### RELEASE FOR GHF MEMBERS

I understand that horses can be unpredictable and sometimes dangerous animals, and that I participate at my own risk. I understand the requirements and limitations of these activities and understand that neither The Good Horseman® Foundation nor the organizers or staff members accept any responsibility for accidents, theft, damage, negligence, illness or injury to horses, owners, employees, attendants or any other persons in connection with activities on this property. I accept full responsibility for myself, my horses, my family members and attendants.

**"WARNING: UNDER GEORGIA LAW, AN EQUINE ACTIVITY SPONSOR OR EQUINE PROFESSIONAL IS NOT LIABLE FOR AN INJURY TO OR THE DEATH OF A PARTICIPANT IN EQUINE ACTIVITIES RESULTING FROM THE INHERENT RISKS OF EQUINE ACTIVITIES, PURSUANT TO CHAPTER 12 OF TITLE 4 OF THE OFFICIAL CODE OF GEORGIA ANNOTATED."**

Signed \_\_\_\_\_ Date \_\_\_\_\_  
(All members must sign—juniors and adults)

Signed \_\_\_\_\_ Print Parent Name \_\_\_\_\_  
(Parent if member is a junior)

Make checks payable to **The Good Horseman® Foundation** and mail to:

Mrs. Patricia Powell, Membership Chairman  
6178 Yellow Creek Road, Murrayville, GA 30564  
404-275-3447; e-mail: [whitandpatpowell@aol.com](mailto:whitandpatpowell@aol.com)



Visa/MC No. \_\_\_\_\_ Exp. date \_\_\_\_\_ CSV Code \_\_\_\_\_ ☐ \$10 EFT Fee

Name on card \_\_\_\_\_ Zip Code where credit card statement is received \_\_\_\_\_



# United States Dressage Federation™

## **OPPORTUNITIES FOR 3-6 YEAR OLD HORSES COMPETING IN MATERIALE AND/OR USEF/FEI YOUNG HORSE TESTS**

	3 YEAR OLD	4 YEAR OLD	5 YEAR OLD	6 YEAR OLD
<b>ADEQUAN®/YEAR-END AWARDS*</b>				
<b>Materiale Horse of the Year Award</b> (min. 3 scores required)	X	X	X	
<b>USEF Four-Year-Old Award</b> (min. 4 scores required)^		X		
<b>FEI Five-Year-Old Award</b> (min. 4 scores required)^			X	
<b>FEI Six-Year-Old Award</b> (min. 4 scores required)^				X
<b>BREEDERS CHAMPIONSHIP SERIES**</b>				
<b>Materiale Championships</b> (min. 1 score required of 72% or higher)				
Three-Year-Old Championship	X			
Four-Year-Old Championship		X		
Five-Year-Old Championship			X	

### **For Adequan®/USDF Year-End Awards - at the time scores are earned**

- \* Horse must have a USDF Lifetime Horse Registration Number (LHR)
- \* Owner must have a USDF Participating (PM) or Business Membership (BM)
  - \* Rider must have a USDF PM
- \* Competition year starts October 1 and ends September 30

### **For USDF Breeders Championship Series - to compete in the championships**

- \*\* Horse must have a USDF Horse Identification Number or LHR
- \*\* Owner must have a USDF PM, BM or non-member number
  - \*\* Rider must have a USDF PM
- \*\* Competition year starts January 1 and ends December 30

*^Scores earned in the USEF Four- and FEI Five- & Six-Year-Old tests are also eligible to be used towards a USDF Horse Performance Certificate*

**Complete Award/Championship Requirements Listed in the current USDF Member Guide**



## 2023 Great American Insurance Group/USDF Regional Dressage Championships

A single Regional Dressage Championship program organized by the United States Dressage Federation (USDF), and recognized by the United States Equestrian Federation, Inc. (USEF), will be held in each of the nine USDF regions. In addition, Alaska and Hawaii may each hold state championships if an official request from a Group Member Organization (GMO) is received by April 1 of the prior year. The Regional Championship Program Rules can be found on the USDF website at [www.usdf.org](http://www.usdf.org). Please refer to the 2023 USDF Member Guide for the comprehensive list of rules and requirements for this program.

### Membership/Registration Requirements for Qualifying and Championships

*All memberships and registrations/recordings must be correct and current at the time qualifying scores are earned and at the time of the championships.*

Rider:

- Must have a USDF Participating\* Membership (PM).
- Must have a USEF membership (Active or Life).

Horse:

- Must have a USDF Lifetime Horse Registration (LHR).
- Must have a USEF (Annual or Lifetime) Horse Recording.
- USDF horse registration and USEF horse recording must be in the name(s) of the current owner(s) or lessee(s).  
A horse is not required to have breed registry papers.

Owner:

- Must have a USDF Participating or Business Membership and a USEF membership (Active or Life Membership or Annual or Life Recorded Farm/Business). If the horse has more than one owner, at least one owner must have both active USEF membership and active USDF Participating or Business Membership and must be the owner of record with USEF and USDF. For a business or farm to be the valid owner under this requirement, it must be listed as an owner of the horse with both USEF and USDF.

\* PMs are USDF members who join USDF directly. USDF Group Members (GM) are ineligible.

**Minimum Qualifying Scores:** One set of nationally-standardized qualifying scores has been established for all USEF/USDF Regional Championships, for Training Level through Grand Prix, in three divisions: open, adult amateur and junior/young rider. FEI Junior and FEI Young Rider classes have only one respective division.

**New for 2023!** Combined Open/Jr/YR Freestyle and AA Freestyle classes.

The minimum percentages are as follows:

	OPEN	AA	JR/YR
Training Level (Test 3)	68%	63%	63%
First Level (Test 3)	66%	62%	62%
Second Level (Test 3)	64%	61%	61%
Third Level (Test 3)	62%	60%	60%
Fourth Level (Test 3)	62%	60%	60%
FEI Junior (Team Test)	—	—	60%
FEI Young Rider (Team Test)	—	—	60%
Prix St. Georges	62%	60%	60%
Intermediate I	62%	60%	60%
Intermediate II	62%	60%	60%
Grand Prix	60%	60%	60%

FREESTYLE	OPEN/Jr/YR	AA
First Level	65%	65%
Second Level	65%	65%
Third Level	65%	65%
Fourth Level	65%	65%
Intermediate I	65%	65%
Grand Prix	65%	65%

Rev 2/14/2023



**USDF Membership Benefits:** USDF is dedicated to education, the recognition of achievement, and promotion of dressage. For details on member benefits, including educational programs, awards, and other opportunities, refer to the *USDF Member Guide* or the USDF website at [www.usdf.org](http://www.usdf.org).

**This  
competition  
is recognized  
by USDF  
for 2023**

**Membership Requirements for USEF-licensed/USDF-recognized Competitions:** Owners and riders, including foreign riders and owners who are not residents of the US, wishing to participate in a USEF-licensed/USDF-recognized competition as a rider or owner/lessee, must have either a USDF Group Membership (GM), Participating Membership (PM), or have a USDF Non-Member (NM) identification number and pay the USDF Non-Member (NM) fee. (Note: USDF Business Members can own horses but cannot compete as riders with their USDF Business Membership.)

Horses competing at USEF-licensed/USDF-recognized competitions must have either a USDF Horse Identification (HID) number or a USDF Lifetime Horse Registration (LHR). Proper credentials or verification certificates must be presented to the competition secretary.

Riders and owners wishing to participate in a USEF-licensed/USDF-recognized competition, and not able to present the competition secretary with verification of a USDF membership or NM identification, and USDF LHR or USDF HID, must complete a USDF Competition Affidavit Form and pay the \$5 affidavit filing fee. A copy of a completed affidavit form from another competition may also be used for verification purposes for up to 60 days. (Exception: Affidavits cannot be used at Great American Insurance Group/USDF Regional Dressage Championships.)

#### Exceptions:

- Horses competing only in Individual Breed Classes (IBCs) at DSHB competitions, sires and dams of horses in DSHB group classes, where those sires or dams are not actually competing in the same competition, horses competing only in breed restricted dressage or DSHB classes at Regular Competitions (e.g. all Arabian, all Friesian, or all Morgan classes), or in USDF Introductory Level tests, pas de deux or quadrille, are exempt from this requirement. Also exempt are horses ridden in leadline, exhibitions, games and races, classes for 4-H members, walk-trot, academy, and opportunity classes.
- Riders and owners/lessees competing only in classes which are exempt from the USDF HID requirements are also exempt from the USDF NM identification number and NM fee requirements. Also exempt are handlers of horses competing in DSHB In-Hand or Group classes.

#### Memberships Defined

**Participating Membership (PM):** A membership issued to an individual directly by USDF. The membership year is December 1 through November 30. PMs are available for 1-year (\$90), 5-years (\$360), or life (\$1,800). A USDF Youth Participating Membership (YPM) is available for individuals who have not reached their 21<sup>st</sup> birthday by December 1 of the current membership year (\$72). A PM allows the member to compete at USEF-licensed/USDF-recognized competitions and to participate as a rider and/or owner/lessee for all Adequan®/USDF Year-End Awards and the Great American Insurance Group/USDF Regional Dressage Championship program.

**Group Membership (GM):** A membership issued to an individual by USDF when the member name and dues are submitted to USDF through an affiliate Group Member Organization (GMO). The GM year begins December 1 and ends November 30. A GM allows the member to compete at USEF-licensed/USDF-recognized competitions and participate in the USDF Rider Awards Program and the USDF Regional Schooling Show Awards Program.

**Business Membership (BM):** A membership that runs December 1 through November 30 and is issued to a business or organization directly by USDF. The USDF BM (\$240) offers a wider variety of advertising benefits. BMs satisfy requirements of horse ownership only.

**Non-Member (NM) Identification Number:** For each USDF NM owner/lessee and USDF NM rider there will be a USDF NM fee of \$35 per competition that must be collected by the show secretary and submitted to USDF, along with the USDF Report of Fees document and the \$5 affidavit fee and Competition Affidavit Form if the person cannot provide a copy of their USDF NM card. Owners/lessees or riders exempt from the NM number requirements are also exempt from paying the USDF NM fee. If there are multiple owners of a horse and all are NMs, only one of the owners must pay the NM fee. If the horse has at least one owner who is a current USDF PM, GM, or BM there is no NM fee assessed. Competition management will be invoiced for all applicable USDF NM fees not received with the USDF post-competition paperwork, along with a report listing all USDF NMs. Competition management is then required to submit the NM fees within 30 days to the USDF. An individual with a USDF NM identification number is not eligible for any USDF membership benefits. Once a USDF NM number has been assigned, a USDF NM card can be obtained from the USDF website.

**Horse Identification (HID) Number:** A one-time tracking number for horses (\$35). Scores earned by a horse with an HID number will be recorded but will NOT be counted towards Adequan®/USDF Year-End Awards. A horse with an HID number is not eligible to compete in Great American Insurance Group/USDF Regional qualifying or championship classes. An HID number can be upgraded to a Lifetime Horse Registration (LHR) for a fee of \$80. If a horse has a USDF LHR it does not need an HID number. An HID number is a one-time fee that does not need to be renewed.

**Lifetime Horse Registration (LHR):** A horse with an LHR (\$115) is eligible for Adequan®/USDF Year-End Awards, and eligible to compete in Great American Insurance Group/USDF Regional qualifying and championship classes, assuming requirements for the owner and rider are met. If a horse has an LHR it does not need an HID number. An LHR does not need to be renewed.

#### How to Join USDF

Applications for USDF Participating Membership (PM), Business Membership (BM), Horse Identification (HID) number, and Lifetime Horse Registration (LHR) may be found in the following locations:

- On the USDF website: [www.usdf.org](http://www.usdf.org). You can submit the application online or download the form.
- In the show office at USEF-licensed/USDF-recognized competitions classified by USEF as Dressage Competitions, and Regular Competitions which are open to all breeds.
- By calling or writing the USDF office at (859) 971-2277, 4051 Iron Works Parkway, Lexington, KY 40511

The effective date of membership is the date the form and correct fees are received in the USDF office or, if applying at a competition, the date accepted by the competition secretary, provided the application is signed and dated by the competition secretary, member, and/or horse owner on that same day.

# The Good Horseman®'s Dressage Shows



Ann Genovese, Organizer  
4567 Rockbridge Rd. #297  
Pine Lake, GA 30072  
404-289-9328 cell  
e-mail: goodhorseman@att.net  
website: www.goodhorseman.org



*The Good Horseman® Foundation is a 501-c-3 non-profit educational organization and a Group Member Organization of The United States Dressage Federation (USDF).*

## Rates

We have ad composition capabilities. You may hand-write what you would like to have in your ad. We will need clean, clear reproductions of photos, logos or other art.

Make checks payable to The Good Horseman® Foundation, and mail to address above.

### Show Program (circle one)

- |                                  |        |  |
|----------------------------------|--------|--|
| • Full page (7½x 10")            | \$ 175 | • Vendor/weekend/\$100 includes half-page ad in program if received in time—add \$25 per weekend for electrical hookup if needed. Add \$25 for color ad. |
| • <u>Full-color</u> full page    | \$ 200 | • Banner display: \$150 includes half-page ad in program.  |
| • Half-page (7½x5"):             | \$ 100 | • Electronic Scoreboard: Show awards sponsors' and advertisers' logos are displayed at no extra charge.  |
| • <u>Full-color</u> half page    | \$ 125 |  |
| • Quarter Page (7½x3½"):         | \$ 75  |  |
| • <u>Full-color</u> quarter page | \$100  |  |

## RECEIPT

The Good Horseman® Foundation (IRS Tax ID #58-2163463)

Name of Event \_\_\_\_\_ Event Date \_\_\_\_\_

Name of Vendor Company \_\_\_\_\_

Name of Person in Charge \_\_\_\_\_ Amt. Paid \_\_\_\_\_

Address \_\_\_\_\_ City \_\_\_\_\_ State \_\_\_\_\_ ZIP \_\_\_\_\_

Phone \_\_\_\_\_ e-mail: \_\_\_\_\_

Did you include ad copy? ☐ Yes ☐ No

Received \$ \_\_\_\_\_ from \_\_\_\_\_ (Advertiser/Donor's name)

Date \_\_\_\_\_ (Receipt will be e-mailed to e-mail address above.)

Visa/MC No. \_\_\_\_\_ Exp. date \_\_\_\_\_

Name on card \_\_\_\_\_ CSV \_\_\_\_\_ \$10 EFT Fee \_\_\_\_\_ Total \_\_\_\_\_

Zip Code where credit card statement received \_\_\_\_\_ Total Amount \_\_\_\_\_





# THE GOOD HORSEMAN® FOUNDATION'S

## 2023 CALENDAR



◆ **April 29-30, 2023 GHF Dressage at the Horse Park #1 and #2 Shows,** Georgia International Horse Park, Conyers, GA. (USEF-licensed, USDF and AQHA recognized.)

**Judges:** Beverly Rogers and Alison Head; others TBA.

◆ **July 18, 2023, “Know the Movements,”** USDF Remote (on Zoom) learning program for USDF Participating Members, especially Adult Amateurs and Jr./Young Riders. USDF University credit given. Application to appear on Calendar page of GHF website [www.goodhorseman.org](http://www.goodhorseman.org).

◆ **July 29-30, 2023 GHF Summer Dressage Show and Team Championship,** Georgia International Horse Park, Conyers, GA (USEF-licensed, USDF and AQHA recognized.)

**Judges:** Judy Downer and Cheryl Holekamp; others TBA.

**Call 404-289-9328 cell**

**or e-mail: [goodhorseman@att.net](mailto:goodhorseman@att.net)  
[www.goodhorseman.org](http://www.goodhorseman.org)**

Cherokee Run  
Golf Resort

Hotel

To GA  
Hwy 138  
& 120

The Steeplechase



GEORGIA INTERNATIONAL

**HORSE PARK®**

CONYERS, GA

GROOMED *for* GREATNESS

Big Haynes Creek  
Nature Center

Bald Rock Meadows

Costley Mill Rd.

Gees Mill Rd.

Gate A  
Green Parking

Gate B  
Orange Parking

Executive  
Offices

Gate C  
Red Parking

Yellow Parking

Gate D  
Purple Parking

Show Office

Legacy Room

Wash Rack

Retail shop

RV hook-ups

Blue Parking

Blue RV Parking

Maintenance  
Facilities

Picnic Pavilion

Arboretum

Champion Pavilion

Carriage Room

RV  
Parking

The Glen

The Plaza

Grand Prix  
Arena

Brown Parking

Holding

Exhibition  
Center

Warm Up

Arena 16

Barn 6

Arena 14

Walker  
Arena

Arena 4

Arena 5

Arena 6

Arena 7

Barn 1

Barn 2

Barn 3

Barn 4

Barn 5

Arena 8

Arena 9

Arena 10

● Longeing Rings