

IMPLANT MAINTENANCE



PARADISE
DENTAL TECHNOLOGIES

The PDT Difference

Linda Miller started PDT in Missoula, MT in 2000. It is now the second-largest manufacturer of dental instruments in North America and available in 57 countries.

PDT's resin handles are lightweight, wide with an exaggerated knurled grip, which reduces pinch force and hand fatigue and increases tactile sensitivity.

PDT's instruments are made with durable steel and have stronger, harder tips that stay sharp longer and are easily resharpened.



Proud to Manufacture in Missoula, MT

As you enter our facility in Missoula, MT, you will see a sign that reads: "Beyond these doors, the world's finest dental-instrument craftspeople apply their trade."

We love what we do, and we enjoy working with you.

Stay Healthy and Joyful,
Linda Miller
PDT CEO/Founder

rence



hygiene | diagnostic | restorative | surgical | endodontic

ERGONOMIC. EFFECTIVE. EFFICIENT.

THE BEST IN DENTAL IMPLANT CARE

PDT implant instruments feature lightweight, tactile-sensitive resin handles and allow access to implant structures without prosthesis removal as well as care and maintenance of single and multi-unit implant supported restorations for long-term implant success.



STRENGTH

Our medical grade titanium won't scratch implants or leave debris behind, and can be sharpened.



COMFORT

Reduce hand fatigue and pinch force while increasing tactile sensitivity with PDT's lightweight, wide handle design with knurling up to the shank.



EFFICIENCY

Our attention to blade size, angulation, curvature and balance allow for superior anatomical adaptation leading to overall comfort and efficiency.

MONTANA JACK™ TITANIUM



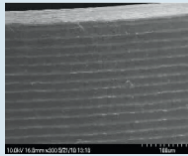
Montana Jack® Titanium
R138T



The PDT Montana Jack® Titanium R138T has all of the great features of the Montana Jack® with the addition of PDT's uniquely processed medical grade titanium blade that won't scratch implants or leave behind debris. It also has a blunt tip as additional protection. With a sharp, durable cutting edge that provides convenient interproximal access, it's the perfect implant instrument for every hygiene setup.

PDT's uniquely processed medical grade titanium does not scratch implants.

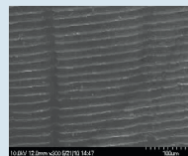
Microscopic view of an implant before and after a competitor plastic implant scaler, a competitor Ti implant scaler and using a PDT Ti Wingrove™ Scaler.



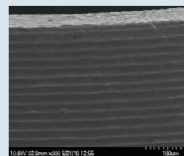
Sybron implant
control photo



Debris left from
plastic scaler



Competitor hard-
ened Ti scaler



No effect after
PDT Ti scaler



AMAZING GRACEYS™ FOR IMPLANT MAINTENANCE

Amazing Gracey™ Micro Mini Implant Scalers

Proven to not scratch or leave residue.



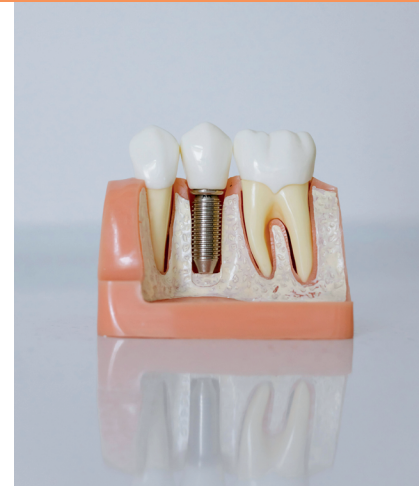
**Amazing Gracey™ 1-2
Titanium Extended
Reach Micro Mini**
R694



**Amazing Gracey™ 13-
14 Titanium Extended
Reach Micro Mini**
R696



**Amazing Gracey™ 11-12
Titanium Extended
Reach Micro Mini**
R695



Micro Mini blades are 20% thinner and 50% shorter working toe with an extended terminal shank.

Thin blades are strong enough to remove calculus and cement around implants.



The PDT **Amazing Gracey™ 1-2 Titanium Extended Reach Micro Mini R694** is an implant instrument designed for anterior pockets with an extended reach terminal shank and improved adaptation designed for straight, extremely narrow periodontal pockets, with a 50% shorter working toe and 20% thinner blade for small, tight areas.



The PDT **Amazing Gracey™ 11-12 Titanium Extended Reach Micro Mini R695** is an implant instrument designed for posterior surfaces with an extended reach terminal shank and improved adaptation designed for straight, extremely narrow periodontal pockets, with a 50% shorter working toe and 20% thinner blade for small, tight areas.



The PDT **Amazing Gracey™ 13-14 Titanium Extended Reach Micro Mini R696** is an implant instrument designed for posterior distal surfaces with an extended reach terminal shank and improved adaptation designed for straight, extremely narrow periodontal pockets, with a 50% shorter working toe and 20% thinner blade for small, tight areas.

PINEYRO ARCH™ KIT



Pineyro Arch™ Ti Kit

R930

Kit includes all four signature instruments in a T005A-F Flip-Top™ Cassette.

Pineyro Arch™ Ti Kit (Instruments Only)

R931

Kit includes all four signature instruments with no cassette.



Pineyro Arch™ Ti 1
R630



Pineyro Arch™ Ti 2
R631



Pineyro Arch™ Ti 3
R632



Pineyro Arch™ Ti 4
R633

Pineyro Arch™ Kit

- Excellent hygiene access for full fixed implant restorations without needing to remove the prosthesis.
- Can also be used for most other implant restorations including locator abutments, healing abutments and exposed threads.
- Use in up-and-down or side-to-side motions.
- No need for resharpening.



Ti 1 - Anterior Arch

Designed for the anterior arch and is used to debride the anteriorly placed implants. The 45° angled end easily accesses the facial while the 90° end adapts to the lingual area of lower anterior teeth, where calculus builds up frequently.



Ti 3 - Mesial/Distal

Designed to debride the hard-to-reach mesial and distal areas on the implants and provides practitioners with easy access to subgingival areas on the implants.



Ti 2 - Posterior Arch

Designed for the posterior arch and is used to debride the posteriorly placed implants. The special shape of the shank allows for proper access to the facial and lingual surfaces of the molars.



Ti 4 - Specialty Arch

Can be used to clean off abutments prior to final impressions and cementation of final restoration.



Alfonso Pineyro, DDS

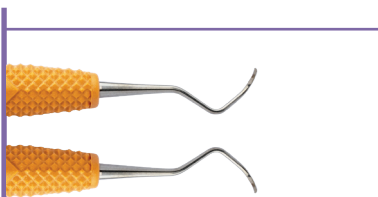


THE WINGROVE™ GO-TO SET

Wingrove Universal Titanium Implant Scalers

Proven to not scratch or leave residue behind

Fun Fact: Did you know that you shouldn't sharpen titanium instruments with a stone that has been used on stainless steel? The Wingrove™ Go-To Set has you covered with its own stone.

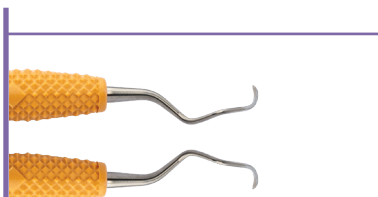


**Wingrove™ B5-6
Titanium Implant
R661**

Titanium scalers for implant maintenance have thinner durable blades that can be reshaped.

Made from USA Medical Grade Titanium.

Thin tips designed to access hard-to-reach surfaces around implants.



**Wingrove™ L3-4
Titanium Implant
R680**



**Wingrove™ N128
Blunt-Langer 5 Mini
Titanium Implant
R693**

The Wingrove™ Go-To Set R900

Set includes all three specially designed instruments plus:

T216 EasyView Probe

T005A-F FlipTop™ Cassette

T061 Diamond Head Ceramic Stone



Susan Wingrove, RDH



HOME OF THE MONTANA JACK®



PDT, Inc. is an ISO 13485:2016 registered company.



www.pdtdental.com

(406)626-4153

customer.care@pdtdental.com

8275 US Highway 10 W
Missoula, MT 59808

Ergonomic. Effective. Efficient.