

Rabbit Anti-Melanoma/gp100/PMEL17/SILV [EP240]: RM0162, RM0162RTU7

Intended Use: For Research Use Only

Description: Melanoma/gp100/PMEL17/SILV is a melanocyte-specific type I transmembrane glycoprotein. It is enriched in melanosomes, which are the melanin-producing organelles in melanocytes, and plays an essential role in the structural organization of premelanosomes. PMEL17 / GP100 is involved in generating internal matrix fibers that define the transition from stage I to stage II melanosomes. PMEL17 expression is melanocytic-cell-lineage-restricted and with significant transcript levels in all stages of melanoma progression, including early and amelanotic melanoma lesions. The PMEL17 antibody specifically labels melanoma cells.

Specifications:

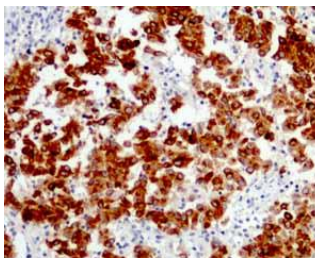
Clone: EP240
 Source: Rabbit
 Isotype: IgG
 Reactivity: Human
 Localization: Cytoplasm
 Formulation: Antibody in PBS pH7.4, containing BSA and $\leq 0.09\%$ sodium azide (NaN₃)
 Storage: Store at 2°- 8°C
 Applications: IHC
 Package:

Description	Catalog No.	Size
Melanoma/gp100/PMEL17/SILV Concentrated	RM0162	1 ml
Melanoma/gp100/PMEL17/SILV Prediluted	RM0162RTU7	7 ml

IHC Procedure*:

Positive Control Tissue: Melanoma
 Concentrated Dilution: 50-200
 Pretreatment: Citrate pH6.0 or EDTA pH8.0, 15 minutes using Pressure Cooker, or 30-60 minutes using water bath at 95°-99°C
 Incubation Time and Temp: 30-60 minutes @ RT
 Detection: Refer to the detection system manual

* Result should be confirmed by an established diagnostic procedure.



FFPE human melanoma stained with anti-Melanoma gp100 using DAB

References:

1. Hepatic epithelioid angiomyolipoma is a rare and potentially severe but treatable tumor: A report of three cases and review of the literature. Liu W, et al. *Oncol Lett* 11:3669-3675, 2016.
2. Surgical monotherapy may be a suitable therapeutic strategy for advanced collecting (Bellini) duct carcinoma: A case report and literature review. Zhu L et al. *Exp Ther Med* 12:1181-1184, 2016.
3. STX13 regulates cargo delivery from recycling endosomes during melanosome biogenesis. Jani RA, et al. *J Cell Sci* 128:3263-76, 2015.
4. Punctate LC3B expression is a common feature of solid tumors and associated with proliferation, metastasis, and poor outcome. Lazova R, et al. *Clin Cancer Res* 18:370-9, 2012.

Doc. 100-RM0162
Rev. A