



L.B.J.&C Bondecroft Head Start 2025-2026 Daily Schedule Classroom A



7:00 a.m.-8:00 a.m.

8:00 a.m.-8:15 a.m.

8:15 a.m.-8:30 a.m.

8:30 a.m.-9:00 a.m.

9:00 a.m.-10:15 a.m.

10:15 a.m.-11:15 a.m.

11:15 a.m.-11:30 a.m.

11:30 a.m.-12:00 p.m.

12:00 p.m.-12:15 p.m.

12:15 p.m.-12:30 p.m.

12:30 p.m.-1:45 p.m.

1:45 p.m.-2:00 p.m.

2:00 p.m.-2:15 p.m.

2:15 p.m.-2:30 p.m.

Teacher Planning Time

Greet parents and children/ Free Choice
Activities/Individualization

Large Group Time/ Preparation For
Family Style Meal Service

Breakfast

Clean-Up/Free Choice
Activities/Individualization/Brush
Teeth

**Outdoor Play (Gross Motor
Activities)**

Transition/ Large Group Time/Preparation For
Family Style Meal Service

Lunch

Clean-up/Brush Teeth/Large Group
Time

Small Group Activities

Transition to Rest Time/Rest Time

Transition to Snack

Snack

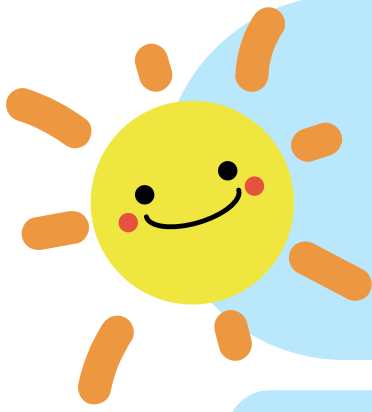
Clean-up/Departure

Inclement Weather Schedule:

Gross Motor Moderate to Vigorous Physical
Activities in the Big Room or Structure Gross
Motor Activities in Classroom



Revised 7/25



L.B.J.&C Bondecroft

Head Start

2025-2026 Daily Schedule

Classroom B



7:00 a.m.-8:00 a.m.

Teacher Planning Time

8:00 a.m.-8:15 a.m.

Greet parents and children/ Free Choice
Activities/Individualization

8:15 a.m.-8:30 a.m.

Large Group Time/ Preparation For
Family Style Meal Service

8:30 a.m.-9:00 a.m.

Breakfast

9:00 a.m.-9:15 a.m.

Clean-up/ Large Group
time/Brush Teeth

9:15 a.m.-10:15 a.m.

Outdoor Play (Gross Motor
Activities)

10:15 a.m.-11:15 a.m.

Free Choice
Activities/Individualization

11:15 a.m.-11:30 a.m.

Transition/Large Group Time/Preparation For
Family Style Meal Service

11:30 a.m.-12:00 p.m.

Lunch

12:00 p.m.-12:15 p.m.

Clean-up/Brush Teeth/Large Group
Time

12:15 p.m.-12:30 p.m.

Small Group Activities

12:30 p.m.-1:45 p.m.

Transition to Rest Time/Rest Time

1:45 p.m.-2:00 p.m.

Transition to Snack

2:00 p.m.-2:15 p.m.

Snack

2:15 p.m.-2:30 p.m.

Clean-up/Departure

Inclement Weather Schedule:

Gross Motor Moderate to Vigorous Physical
Activities in the Big Room or Structure Gross
Motor Activities in Classroom



Revised 7/25