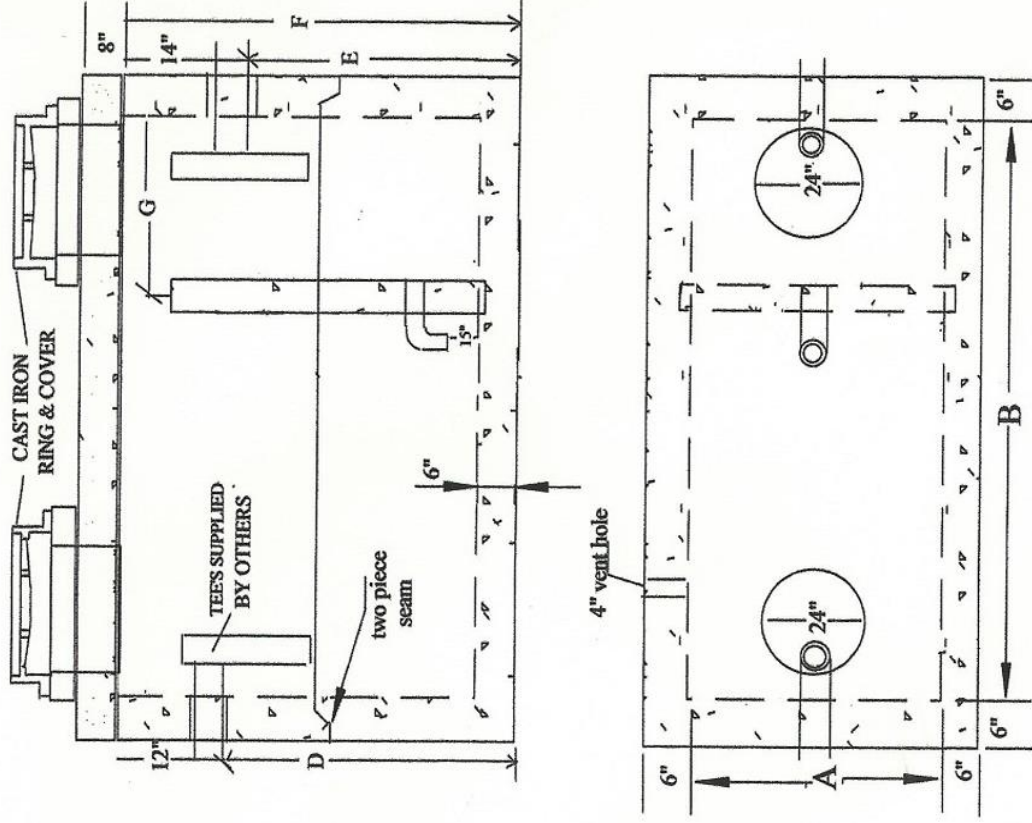


AGUILARS CORPORATION

4301 DENVER STREET, EVANS CO 80620

(970)330-7086, FAX (970)330-7171

TYPE A GREASE INTERCEPTOR - TWO COMPARTMENT



- NOTES:**
 ALL REINFORCEMENT ON LID IS #5 REBAR AT 8" O.C. EACH WAY
 ALL REINFORCEMENT ON 6" WALLS & 6" FLOORS IS #4 REBAR AT 12" O.C. EACH WAY
 FOR H-20 LOADING ON LID PROVIDE: #6 REBAR AT 8" O.C. EACH WAY

DIMENSIONS INCHES

	water capacity gallons	SAND capacity	A	B	C	D	E	F	G
ONE PIECE TANKS	330	45 cubic ft.	48	72	22	30	28	42	24
	510	68 cubic ft.	48	72	34	42	40	54	24
	800	107 cubic ft.	48	96	40	48	46	60	36
TWO PIECE TANKS	1070	143 cubic ft.	60	102	40	48	46	60	42
	1260	168 cubic ft.	60	120	40	48	46	60	48
	1510	202 cubic ft.	72	120	40	54	52	66	48
TANKS	1820	244 cubic ft.	72	144	40	54	52	66	48
	2000	280 CUBIC FT.	72	144	50	66	64	78	48
	2500	320 CUBIC FT.	72	144	64	72	70	84	48
	3000	360 CUBIC FT.	72	144	68	76	74	88	48