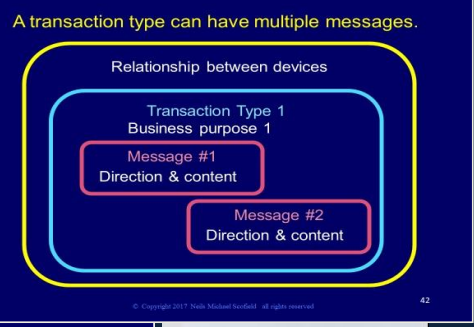
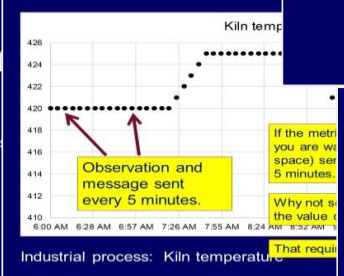
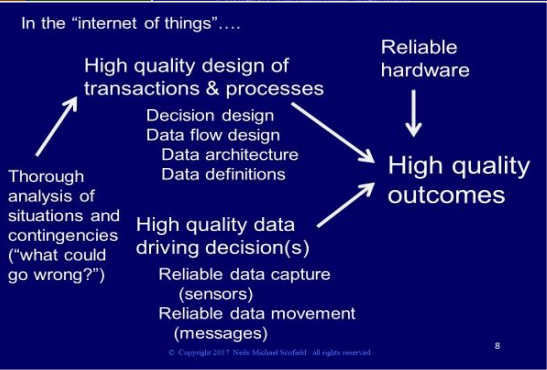
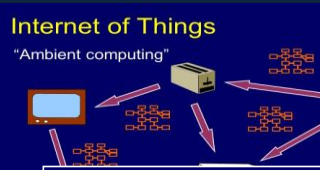
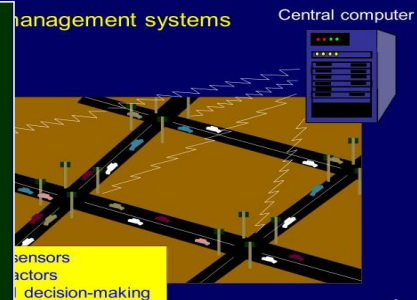
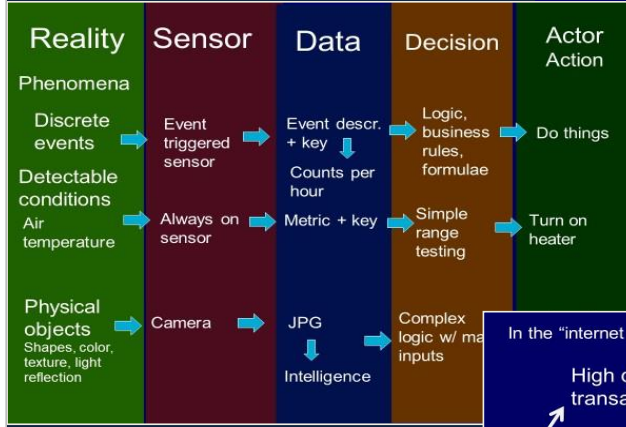


# Managing Data for the "Internet of Things"

Bringing order and reliability to the chaos of communication between devices.

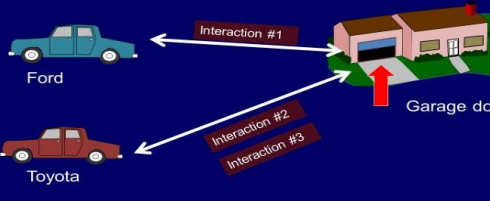
Presentation by Michael Scofield, M.B.A.  
Asst. Professor, Loma Linda University

Data is central to the "internet of things". All data communicated between devices has architecture and requires rigorous design and definition. Good design considers relationships among devices, specific business-related transactions, the content of messages, and the logic in automated decision-making. Care must be taken when replacing human awareness and judgment with software logic.



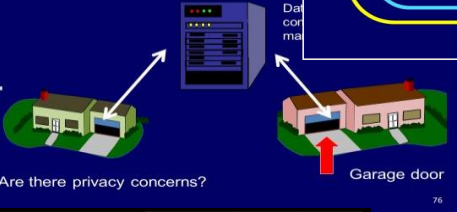
## Ownership and design

Who owns and designs the relationship between two disparate objects?



## Device "phone home"

Could the logging be done at the manu...



## Sensors are dumb !

Lights turn on as I walk down the Nichol Hall corridor.



But they would do the same thing for my cat.

Invention is the mother of necessity.



Contact:  
NMScofield@aol.com