



PET
INSURANCE

Pet Safety Handbook

Provided by petpartners 





Table of Contents

Puppy Essentials	4
Be prepared to bring your new puppy home.	
Dog Health	9
What to expect at your first vet visit and vaccine overview.	
Seasonal Safety	10
Protect your pet against parasites and keep them safe during all seasons.	
Top Poisons	14
A list of common items that are harmful to your pets.	
Signs & Symptoms	20
Learn how to determine if your dog is hurt or sick..	
Dog Care Tips	22
How-to tips on how to care for your dog and make your own first aid kit.	
Important Contacts	24
Important contacts and emergency information to keep your pet safe.	

The information contained in this booklet is for informational purposes only and is not intended to replace medical advice offered by a veterinarian. All treatment, lifestyle, and dietary choices should be discussed with your licensed veterinarian.

Puppy Essentials

Veterinarian

Have a veterinarian in place prior to bringing home your puppy. You will need to take your puppy for their first vet visit soon after getting them. It's best to have someone to call in the event of an accident or if you have questions or concerns about your puppy.

Crate & Bedding

Have a safe crate that your puppy is able to comfortably lay down, stand up, stretch and turn around in. Be sure the crate is neither too big or too small for your puppy.

Bedding should also be prepared. Puppies have accidents, so make sure you choose something that is easily washable. Towels, blankets or dog beds are appropriate.

Collar, Leash, & ID Tag

Adjustable nylon collars are best for puppies since they grow quickly. Two fingers should be able to fit under the collar when worn. Do not use "slip" leads or "choke" collars on young puppies. The collar should have an ID tag. At minimum, the tag should include your puppy's name and your phone number. These can be made at your local pet store. Be sure your puppy has his collar and ID on at all times.

Food & Water Bowls

Have food and water bowls waiting at home. These can be ceramic, plastic or stainless steel and should not be too big for your young puppy. You may need to buy bigger bowls as your puppy grows but it's better to start small.

Dog Food & Treats

Have dog food purchased before you bring your puppy home. Choose quality food specifically made for puppies. It contains the appropriate vitamins and nutrients that are essential for your puppy's growth and development. It also has smaller kibble that are easier for your puppy to chew. Have some healthy, puppy-sized treats on hand to use as a reward or for training. Treats should be used sparingly to avoid weight gain, an upset stomach or becoming spoiled!

Microchip



One in three pets will go missing in its lifetime therefore it is a good idea to get your puppy microchipped if your breeder hasn't already done so. A microchip is a tiny chip, about the size of a grain of rice, that is encoded with a unique ID number that will be assigned to your pet. The microchip is inserted between your pet's shoulder blades under a veterinarian's supervision. It is a relatively painless procedure—similar to a vaccine. If your pet is ever lost or stolen, the chip can be scanned so you can be reunited with your pet. Learn more about microchipping your puppy, from AKC Reunite. AKC Reunite is a longstanding microchip service provider that can help you.

Bathing & Grooming Supplies

Have puppy-safe shampoo ready for baths. Other grooming items that are helpful to have on hand are: ear cleaner, eye stain remover and nail clippers. Ask your veterinarian or your local pet store for recommendations on grooming supplies safe for puppies.

Toys

Choose puppy specific toys that are plush, rope, rubber, plastic or chew. They are made with puppy-safe materials that they can't destroy. Puppies should be supervised with their toys to avoid ingestion. Ask your veterinarian, breeder or local pet store for good, puppy-safe toy options.



KONG CLASSIC

Fill with water and freeze. Great for teething pups!



HARD NYLON TOY

Be sure it's not small enough that your puppy can swallow it!



THICK ROPE

Make sure it can't be torn apart. Forgo tug of war until they're full grown.

Cleaning Supplies

You will want to have pet-safe cleaning supplies on-hand prior to bringing your puppy home. Puppies have accidents so be prepared to clean. Ask your veterinarian, breeder or pet store for good cleaner options.

Emergency Contacts

Have a list of contacts readily available in case of an emergency. This list should include: your primary care veterinarian, a local emergency clinic, poison control, an emergency contact in case you are not available and possibly your breeder.

Pet Insurance

Pet insurance is becoming more popular amongst pet owners and is proving to be an essential piece in keeping our pet safe and healthy. It helps you meet the healthcare needs of your pet by reimbursing for costly vet bills. It can cover anything from accidents and illnesses to wellness care. Enrolling your puppy when it's young before any health concerns arise is best. Coverage is often less expensive and offers more options at this age.



PET INSURANCE



What is Pet Insurance?

Nobody wants to think of their pet getting hurt or sick, but the unexpected can happen and its best to be prepared. Pet insurance is like health insurance but for dogs and cats. It reimburses for costly veterinary bills, allowing you to focus more on the health of your pet and less on how you're going to pay for it.

DID YOU KNOW?

1 in 3 pets will need emergency treatment each year.

What Does It Cover?

Choose coverage for:

- ✓ Accident Only
- ✓ Accident and Illness

- ✓ Wellness Care
- ✓ Exam Costs
- ✓ Inherited Conditions



Get reimbursed for:

- ✓ Prescription medications
- ✓ CT scans & MRIs
- ✓ Surgery

- ✓ X-rays & ultrasounds
- ✓ Labwork
- ✓ Hospitalization

How Does It Work?

It's best to get your puppy enrolled young. Enrollment costs are lower and they are less likely to have any pre-existing conditions. Pet insurance is easy. There is no veterinary network—you can go to any vet any time. Simply, bring your dog to the vet, pay your bill, submit a claim form and invoice via mail, email or fax and get reimbursed! Depending on the coverage chosen, plans can start as low as \$15/month.



First Vet Visit

Vet Vist Expectations

Your puppy's first vet visit should take place very soon after they come home. Your vet can get acquainted with your new pup and get a baseline on their health status.

✓ Weigh puppy



✓ Take vitals: Temperature, heart rate and respiratory rate

✓ Listen to heart and lungs

✓ Examine eyes, ears, nose and feet

✓ Examine skin and coat

✓ Check mouth and teeth

✓ Look at paws and toes

✓ Fecal Exam

✓ Vaccines

Vaccines may be required at the first vet visit depending on when your breeder last vaccinated the puppies. If your breeder previously vaccinated your puppy, bring the vaccination records to the vet appointment. This way your vet knows what your puppy has already received and when.

✓ Questions

Bring a list of questions you may have about caring for your puppy. Your veterinarian can help you choose types of dog food, preventative care and give recommendations on microchipping and spaying or neutering.

Types of Vaccines

Vaccines

Vaccines protect against contagious, potentially fatal diseases. They work by triggering an immune response that prepares pets to fight future infections.

Dog Core Vaccinations

According to AHAA, these vaccines are considered core vaccines and are recommended for all dogs to protect against diseases that are more serious or potentially fatal. These diseases are found throughout North America and are easily transmitted.

✓ Distemper

✓ Parvovirus

✓ Adenovirus

These 3 vaccines are often combined into the DA2PP combo vaccine

✓ Rabies

Dog Noncore Vaccinations

These vaccines are often considered elective based on lifestyle or demographic location. Follow your veterinarian's recommendations for these vaccines.

✓ Bordetella Kennel Cough

✓ Borrelia Burgdorferi Lyme Disease

✓ Leptospirosis

✓ Canine Influenza Virus

Parasite Prevention

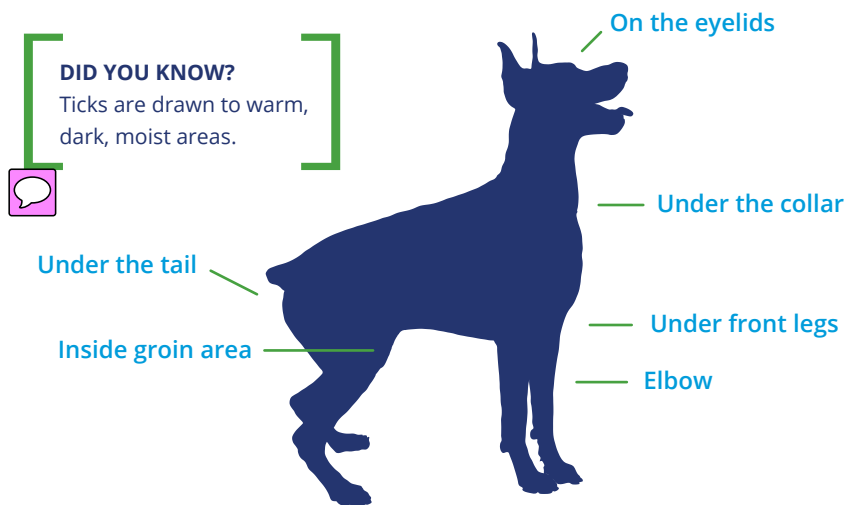
Ticks

Ticks are parasite that latch onto your dog and suck blood. They are difficult to remove and can cause serious illness, like Lyme Disease. Always check your dog after they've been outdoors. Tall grass and wooded areas have high tick populations.

Common signs: Tick on dog, small bump- remittent of tick, scabs

Prevention: Topical and oral tick prevention is available. Many products treat both fleas and ticks. Ask your veterinarian what products are best for your pet and your region.

Treatment: Remove the tick with fine point tweezers. Steadily pull upward and off the skin ensuring you get full removal of the tick. Ticks are very resilient. Dispose of the tick by soaking in rubbing alcohol or flush down the toilet. *If you are uncomfortable removing the tick or are unsure whether you removed the entire tick, contact your veterinarian for help.



Fleas

The size of a pinhead, fleas are parasites that bite your dog and cause extreme itching. Excessive scratching can lead to skin infection or wounds. Fleas can live on pets for weeks and lay 20-30 eggs a day. It's important to stay ahead of fleas. Treating pets and their environment regularly is crucial.

Common signs: Severe scratching and chewing, red bumpy skin, hair loss

Prevention: Oral and topical flea prevention is available. Flea collars are also an option. Regular grooming and bathing is very helpful in preventing fleas.

Treatment: Call your vet for recommendations on the best treatment plan. This can include flea combs, shampoos or a single dose oral medication.

Heartworm Disease

These parasitic worms are most commonly spread by mosquito bites. When bitten, the mosquito larvae enter the bloodstream. The larvae turn into worms inside the heart. Prevention is imperative! Heartworm disease is very serious and can be fatal to pets.

Common Signs Coughing, lethargy, difficulty breathing

Prevention: Monthly, oral heartworm prevention is strongly recommended. You should also get your pet tested annually.

Treatment: If you suspect your dog has heartworm disease, contact your vet immediately. Your vet will give you treatment recommendations which can include oral medications, an injection or, in rare cases, surgery. Do not give your dog heartworm prevention medication if you suspect your dog has heartworm disease! This can be fatal!



Warm Weather Safety



OUTSIDE °F	INSIDE CAR °F	
	10 min	30 min
70°	89°	104°
75°	94°	109°
85°	104°	119°
95°	114°	129°

DID YOU KNOW?

Cracking windows or leaving your car in shade has **very little** effect on the car's internal temperature.

Hot Car Safety

Temperatures inside a car are alarmingly higher than outdoor temps. What might feel pleasant outside can be dangerously hot inside a car! High temps and lack of available water can quickly lead to heatstroke or even death.

Sun Protection

Sunburns aren't just for humans! Limit your dog's sun exposure and apply sunblock to their ears and nose 30 minutes before going outside. Keep in mind, dogs with short hair, white fur, and pink skin are at a higher risk for sunburns.

Hot Paws

Hot pavement can burn your dog's paw pads! Check sidewalks with your hand or foot for 10 seconds. If it's too hot for you, it's too hot for them! Restrict activity to earlier or later in the day when it's cooler. If you see your dog limping or licking his paws or if the paws appear damaged, take your dog to your veterinarian for treatment.

Cold Weather Safety



Snow Melt

Steer clear of de-icers such as rock salt when walking your dog. They can hurt their paw pads and are toxic to ingest. Make sure to rinse and dry your pup's paws when you get home.

Paws and Snow

Trim the hair between your dog's toes. This will help prevent ice balls from forming. Try rubbing a small amount of petroleum jelly on your dog's paw pads before you go for a walk to help repel the snow.

Cold Car Safety

Never leave your dog alone in the car on cold days. The same way your car heats up in the summer, it gets extremely cold in the winter.

Antifreeze Warning

Avoid spilled antifreeze in driveways. It smells and tastes good to dogs, but it is lethal if ingested. Opt for a pet-friendly antifreeze, which contains a much less toxic chemical and doesn't taste as pleasant to animals.




Top 10 Poisons

Depending on the substance, symptoms can include gastrointestinal issues, neurological problems, cardiac or respiratory distress, coma or even death.



- ① **Prescription Medications** Antidepressants, anticonvulsants, blood pressure and heart medications (Atenolol, Enalapril).
- ② **Rodenticides and Insecticides** Rat and mouse poison, bug sprays, snail bait, topical flea and tick products (if ingested)
- ③ **Over-the-Counter Medications** Acetaminophen (Tylenol), ibuprofen (Advil), naproxen (Aleve) as well as some herbal and nutraceuticals

- ④ **Pet Medications** Overdose of pain medications (carprofen, Deramax, Previcox), cardiac and blood pressure medications, diabetes medications (insulin).
- ⑤ **Human Food** Alcohol, avocado, macadamia nuts, grapes/raisins, caffeine, onions, and garlic
- ⑥ **Chocolate** Dark and purer forms of chocolate that contain more of the toxic ingredient, theobromine, are more likely to cause severe symptoms.
- ⑦ **Xylitol** Artificial sweetener that is found in many chewing gums, liquid human medications and some peanut butters. Can cause weakness and seizures.
- ⑧ **Household Products** Cleaners, bleach, paint thinner, anti-freeze, pool chemicals, polishes, detergents
- ⑨ **Lawn and Garden Products** Fertilizers, sprays, weed killer
- ⑩ **Plants** Azaleas, rhododendrons, poinsettias, tulips, daffodils, lilies, sago palms, some mushrooms



Nearly 50% of the poisoning cases managed by Pet Poison Helpline involve human medications—both over-the-counter and prescription drugs.

If you suspect your dog has come in contact with a toxic substance, call your veterinarian or Pet Poison Helpline immediately. If your pet is already experiencing symptoms, bring them to the closest 24-hour emergency clinic. Be prepared and know the type substance, ingredients, strength (if medication), approximate quantity and time the incident occurred.

Signs & Symptoms

Dogs may not be able to talk, but they do “tell” us when they are not feeling well. Below is a list of subtle signs and symptoms that may indicate there is a problem.

Pain

Dogs often express pain in very vague symptoms. Dogs are very stoic so it's helpful to understand these signs.

- ✓ Limping, panting, or whining
- ✓ Painful to Touch
- ✓ Disinterest in food
- ✓ Laying down
- ✓ Reluctance to get up or go on a walk
- ✓ Protecting a certain body part
- ✓ Unusual behavior such as aggression or hiding

Upset Stomach

Upset stomachs can be minor or serious, and can sometimes be accompanied by vomiting or diarrhea. If this occurs, withhold food and water for a period of time. Then begin offering small amounts of water and bland diet, like chicken and rice, until you know your dog is feeling better.

- ✓ Excessive drooling
- ✓ Lethargy
- ✓ Inappetance
- ✓ Depression
- ✓ Vomiting
- ✓ Gulping water
- ✓ Panting
- ✓ Eating grass



Ear Problem

Eye and ear problems can progress quickly, so it's best to consult your vet if you have any concerns.

- ✓ Scratching at ears
- ✓ Head shaking
- ✓ Reddening, swelling inside the ear
- ✓ Discharge
- ✓ Rubbing ears
- ✓ Loss of hearing
- ✓ Yeasty or foul odor

Eye Problem

Eye and ear problems can progress quickly, so it's best to consult your vet if you have any concerns.

- ✓ Squinting
- ✓ Reddening
- ✓ Tearing
- ✓ Discharge
- ✓ Scratching at eye
- ✓ Loss of vision



Dog Care Tips

Taking Temperature



DID YOU KNOW?

A dog's average body temperature is **101°-102.5°F.**

Step-by-Step Guide

Step 1: Clean the thermometer with rubbing alcohol.

Step 2: Dip the thermometer into petroleum jelly.

Step 3: Lift your dog's tail and slowly insert the thermometer into rectum about 2-3 inches and wait for reading.

Step 4: Give them a treat for good behavior.

Step 5: Wash thermometer.



Ear Cleaning

Ears should be cleaned at least once a month, more often if your dog is prone to ear problems. Check for dirt, scratches, parasites, discharge, or any unpleasant odor. If these do occur contact your vet. Moisten a cotton ball with mineral oil and gently wipe out the ears, going no deeper than the first knuckle on your finger.

Teeth Cleaning

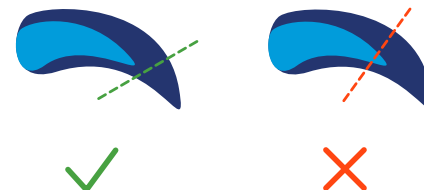
Begin by gently scrubbing the teeth with a finger brush or gauze pad. Later you can graduate to a toothbrush and canine toothpaste. Toothbrushes should be soft, and toothpaste **must** be formulated for a dog's system. Teeth can also be cleaned with a paste made of baking soda and water.

Nail Trims

Start playing with your puppy's paws early on to get them used to you manipulating them. During the trimming process, reward your pup with treats. Using dog nail trimmers, clip only the curved part of the nail. If you accidentally hit the quick, put a small amount of antiseptic powder on a gauze pad and gently press it into the bleeding nail and hold for 1 minute.

HOW TO TRIM NAILS

Grasp toe with thumb and forefinger to extend the nail. Clip just the tip of the nail straight across. Avoid clipping past the curve or you will risk hitting the quick.



Pet First Aid Kit

Be prepared in case of an emergency and make your own Pet First Aid Kit. Keep it your house and bring it along long trips. Check your first aid kit at least once a year to ensure it stays stocked and up-to-date.

Phone numbers: Veterinarian, Emergency clinic and Pet Poison Helpline

Medical Records including medications, vaccine history and allergies

Leash to transport your pet (if your pet is capable of walking)

Towels and/or blanket to keep warm, comfortable or to clean up

Absorbent gauze pads to control bleeding, wound cleaning or applying topical medication

Cotton balls and swabs cleaning wounds or applying topical medications

Bandage tape for securing gauze wrap or bandage. (ie. cloth tape, bandage tape) *Do NOT use human bandages (eg, Band-Aids®) on pets.

Self-cling bandage wrap to secure bandage (ie. VetWrap or Coflex)

Non-latex disposable gloves to maintain cleanliness for you and your pet

Sterile Saline for cleaning wounds

Eye wash to flush out foreign material in eye

Providion Iodine Solution for cleaning wounds

Digital Thermometer Refer to Dog Care Tips on pg 18 for steps on taking your dogs temperature.

Petroleum Jelly to lubricate the thermometer

Eye dropper or large syringe without needle to give oral treatments or flush wounds

Tweezers to remove objects from skin

Bandage Scissors to cut away potential hazards (collar, leash, fabric)

Milk of magnesia or activated charcoal* to absorb poison in the stomach

Hydrogen peroxide (3%)* to induce vomiting

Anti-histamine medication* (Benadryl®) treat an allergic reaction



*Always consult your veterinarian before administering any oral medications. Get your veterinarian to give you appropriate doses for the size of your dog. Giving the wrong medication or wrong dose can be fatal.

Keep track of your best friend's activity, location, & health.

Bringing a new puppy home can be scary. Your number one priority is to keep your new family member. To help in that, Link AKC developed the first GPS enabled dog collar to give dog owners peace of mind 24 hours a day, 7 days a week.



How It Works

Data is transmitted from the collar to a cellular network which allows you to know your dog's location, activity levels, and environment temperatures.

LOCATION Always know where your dog is or locate if lost.

WELLNESS Track your puppy's activity and health as they grow.

ADVENTURES Record and save your new pup's playtime and training milestones.

TRAINING Remote sound feature aids in training.

SAFETY LED light offers nighttime safety.

DURABLE Shock resistant and waterproof to endure puppy play.

For added protection, your Link AKC Smart Collar comes with a subscription to Pet Poison Hotline, offering you 24/7 direct access to veterinary professionals in case of poisoning—a \$59 value.

For new puppy owners, Link AKC offers a Puppy Guarantee allowing you to upsize your growing puppy's collar at no cost to you.

Important Contacts

Pet Poison Helpline

(800) 213-6680

www.petpoisonhelpline.com

\$59/per incident fee paid by credit card

AKC Pet Insurance

(866) 725-2747

www.akcpetinsurance.com

info@akcpetinsurance.com

Veterinarian: _____

Clinic Name: _____

Phone: _____

Address: _____

Emergency Clinic: _____

Phone: _____

Address: _____

Breeder: _____

Phone: _____

Email: _____

Pet Information

Pet Name: _____

DOB: _____ **Breed:** _____

Color: _____

Medical Conditions: _____

Allergies: _____

Medications: _____

Special Instructions: _____

Emergency Contact: _____

Phone: _____

Call or visit us online to get your Free Quote today!



**PET
INSURANCE**

www.akcpetinsurance.com

(866) 725-2747

The Exclusive Pet Insurance Provider of the American Kennel Club

Since 2002, AKC Pet Insurance has been helping pet owners plan for the healthcare needs of their pets by providing affordable, comprehensive pet insurance coverage to dogs and cats in all 50 states.

Special thanks to the the American Kennel Club®, Link AKC and AKC Reunite for providing us with such useful information for new pet owners!



**American
Kennel ClubSM**

