

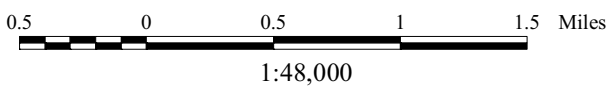
Existing Land Use Town of Stratton, Vt. 2020

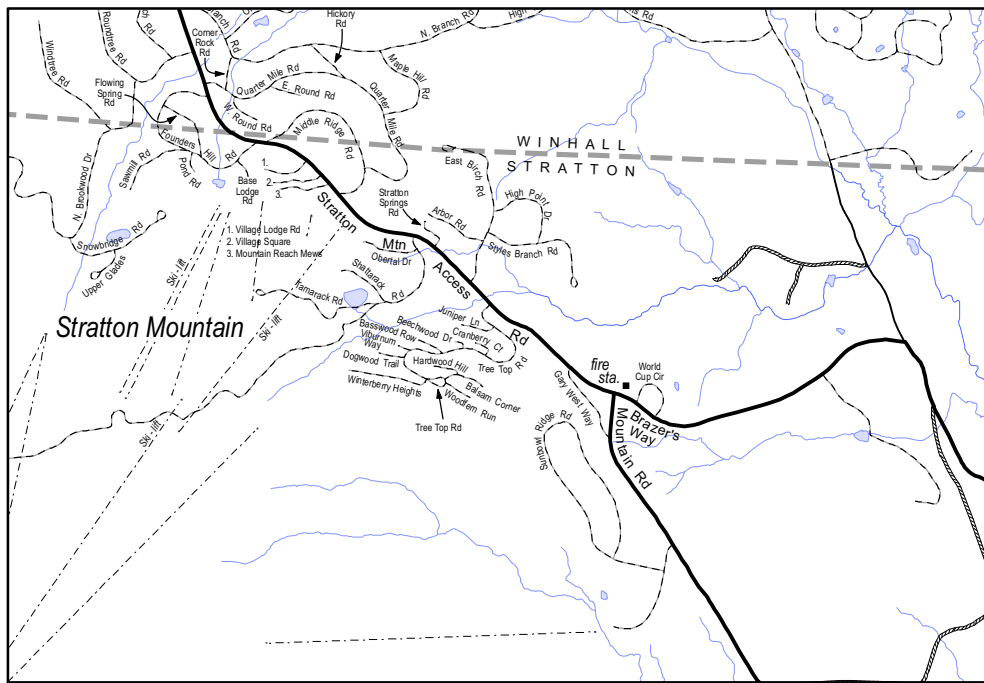
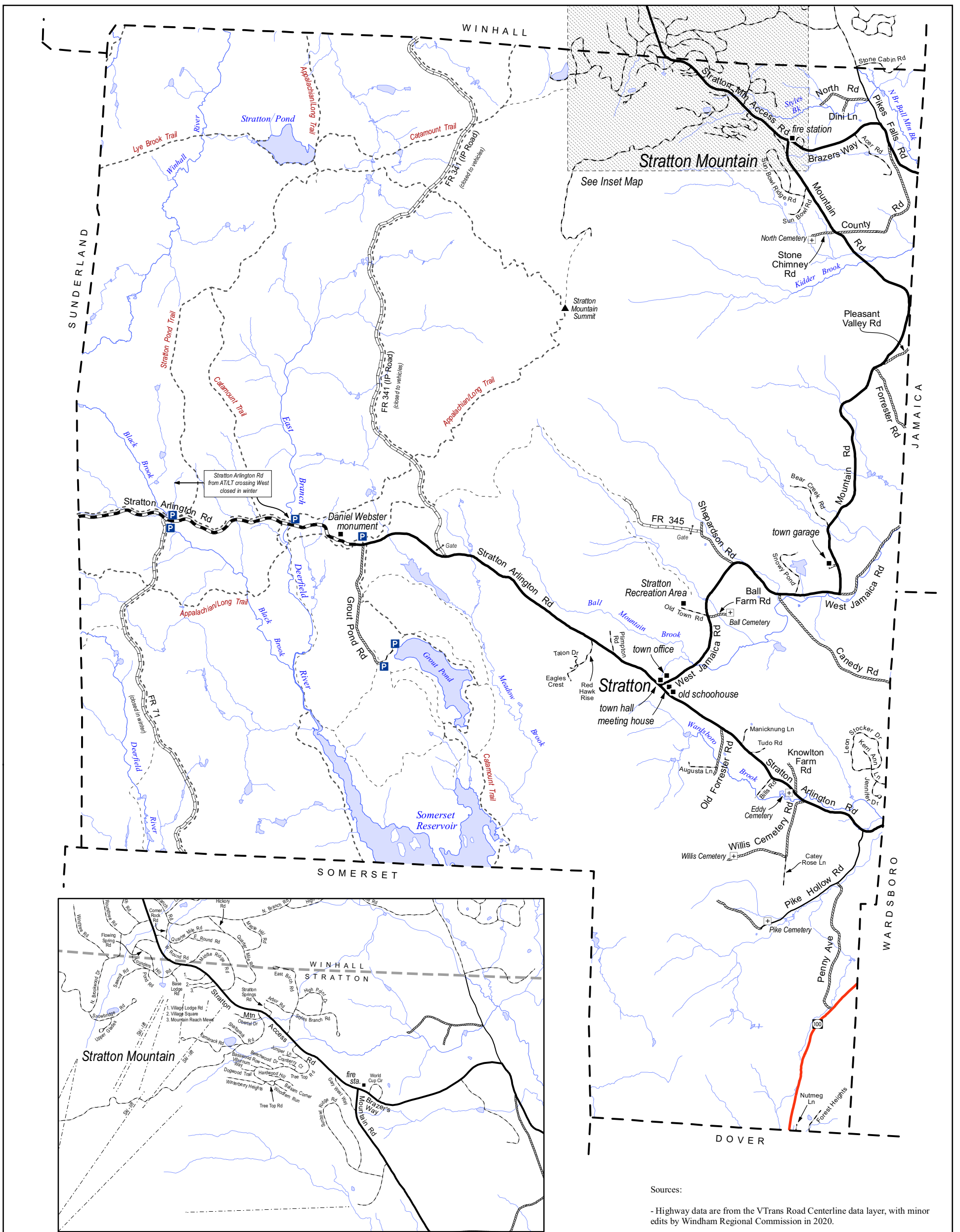


- Commercial building
- Public/institutional building
- Residential building
- Parcel boundary (2018)
- ⊗ Gravel pit
- US Forest Service land
- Town of Stratton conservation/recreation land
- ▨ Conservation easement

Sources:

- Parcel lines are from GIS data developed by Cartographic Technologies, Inc. (CTI), Brattleboro, Vt., and are current to 2018.
- Primary building locations are extracted from the VGIS data layer ESITE, developed using Global Positioning System technology for the Vermont Enhanced 9-1-1 project. Data are current to 2019.
- Conservation land data were developed from digital parcel data by WRC using information from the Vermont Conservation Lands Database developed by UVM Spatial Analysis Laboratory, Town of Stratton GIS parcel data, and DXF data from Stratton Corporation's master plan. Conservation lands data are current to 2020.



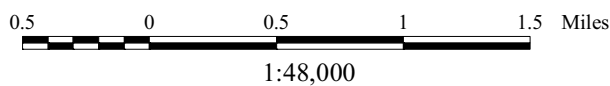
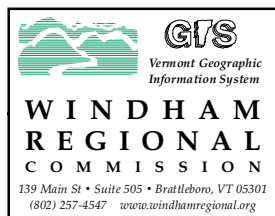


Inset map scale - 1:24,000

Transportation and Community Facilities

Town of Stratton, Vt.

2020

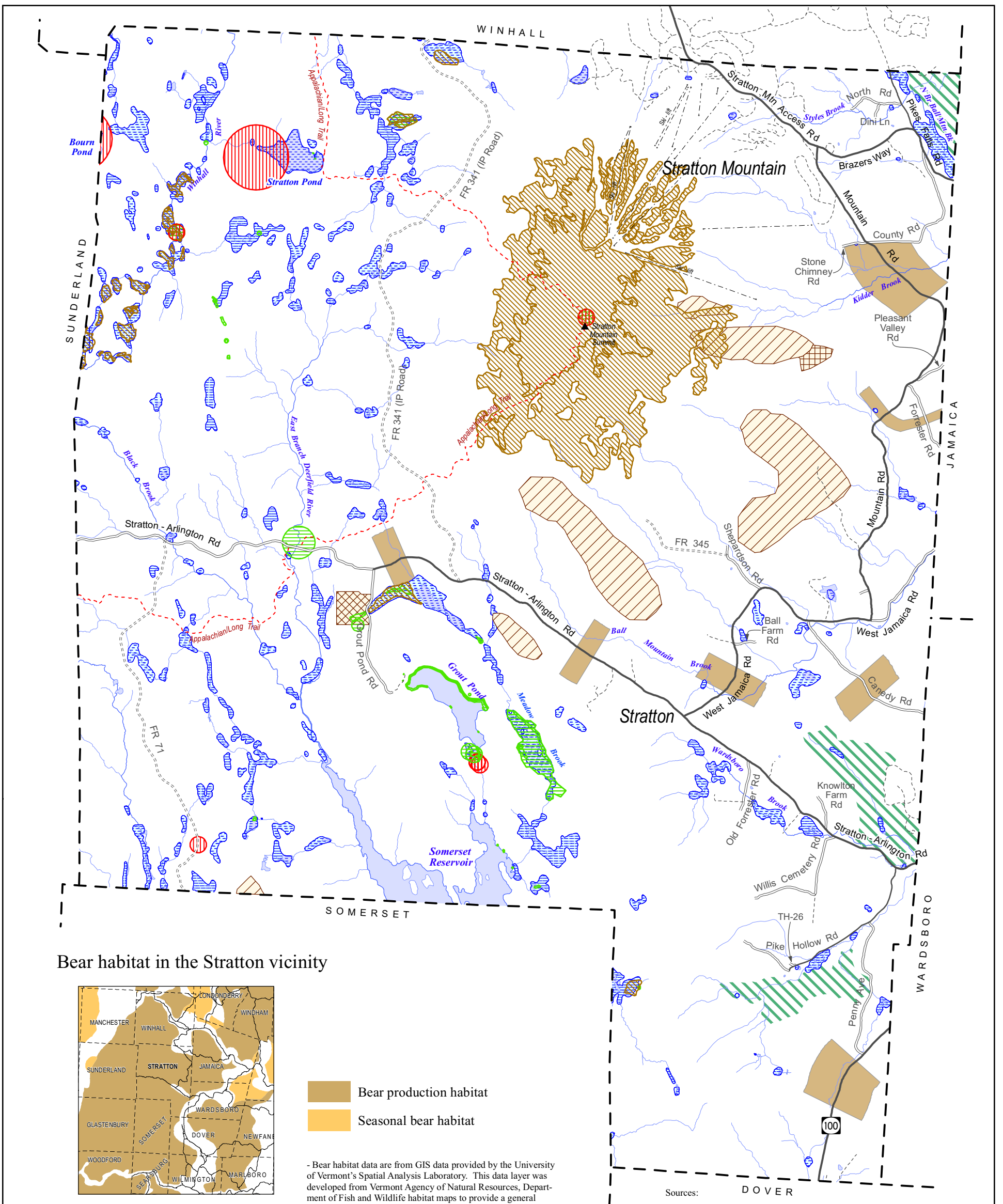


- State Highway
- Class 2 town highway - paved
- Class 2 town highway - unpaved
- Class 3 town highway - paved
- Class 3 town highway - unpaved
- U.S. Forest Service Road
- Private road/drive
- Town boundary
- Stream
- River or pond

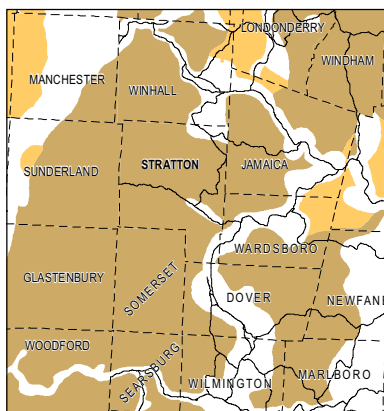
- Community facilities
- Recreation parking area
- Cemetery
- Major hiking, snowmobiling, or x-c ski trail
- Other trail

Sources:

- Highway data are from the VTrans Road Centerline data layer, with minor edits by Windham Regional Commission in 2020.
- Surface waters are from the Vermont Hydrography Dataset (VGIS data layer SWnnnnnnn). The dataset was generated at a scale of 1:5000 and was developed using digital orthophotos, topographic maps, color infra-red aerial photography and other ancillary data sources.
- Trails data are from a combination of sources, including the U.S. Forest Service, the Catamount Trail Association, VCGI, and Windham Regional Commission.
- Community facilities, recreation parking areas, and cemeteries were identified by the Stratton Planning Commission and located by WRC using digital orthophotos, tax maps, and USGS topographic maps.



Bear habitat in the Stratton vicinity



- Bear production habitat
- Seasonal bear habitat

- Bear habitat data are from GIS data provided by the University of Vermont's Spatial Analysis Laboratory. This data layer was developed from Vermont Agency of Natural Resources, Department of Fish and Wildlife habitat maps to provide a general overview of bear habitat.

Sources:
 - Significant Bear Areas were developed for the 1998 Stratton Town Plan. Boundaries for these areas were developed in consultation with Forrest Hammond of the Vermont Agency of Natural Resources, Department of Fish and Wildlife and digitized by Cartographic Technologies, Inc., Brattleboro, Vt. These areas represent road crossings critical to the bears, and areas within 400 meters of these crossings.

- Bear Food Sources data were developed for the 1998 Stratton Town Plan. Boundaries for these areas were developed in consultation with Forrest Hammond of the Vermont Agency of Natural Resources, Department of Fish and Wildlife and digitized by Cartographic Technologies, Inc., Brattleboro, Vt.

Significant Habitats Town of Stratton, Vt. 2020

- Endangered, rare, or uncommon animal
- Threatened, rare, or uncommon plant
- Significant natural community

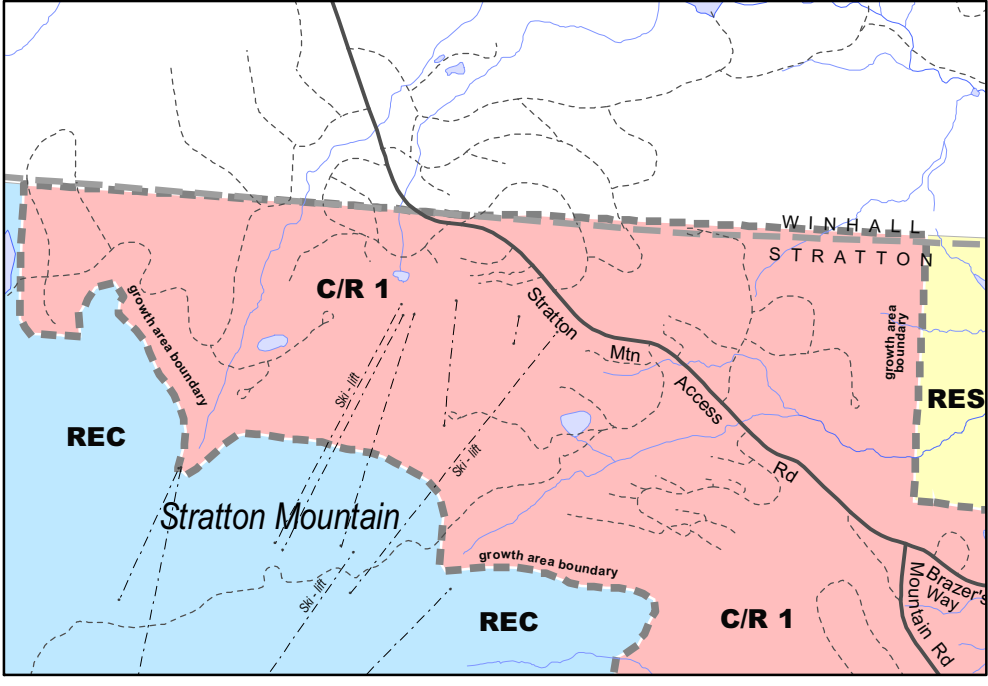
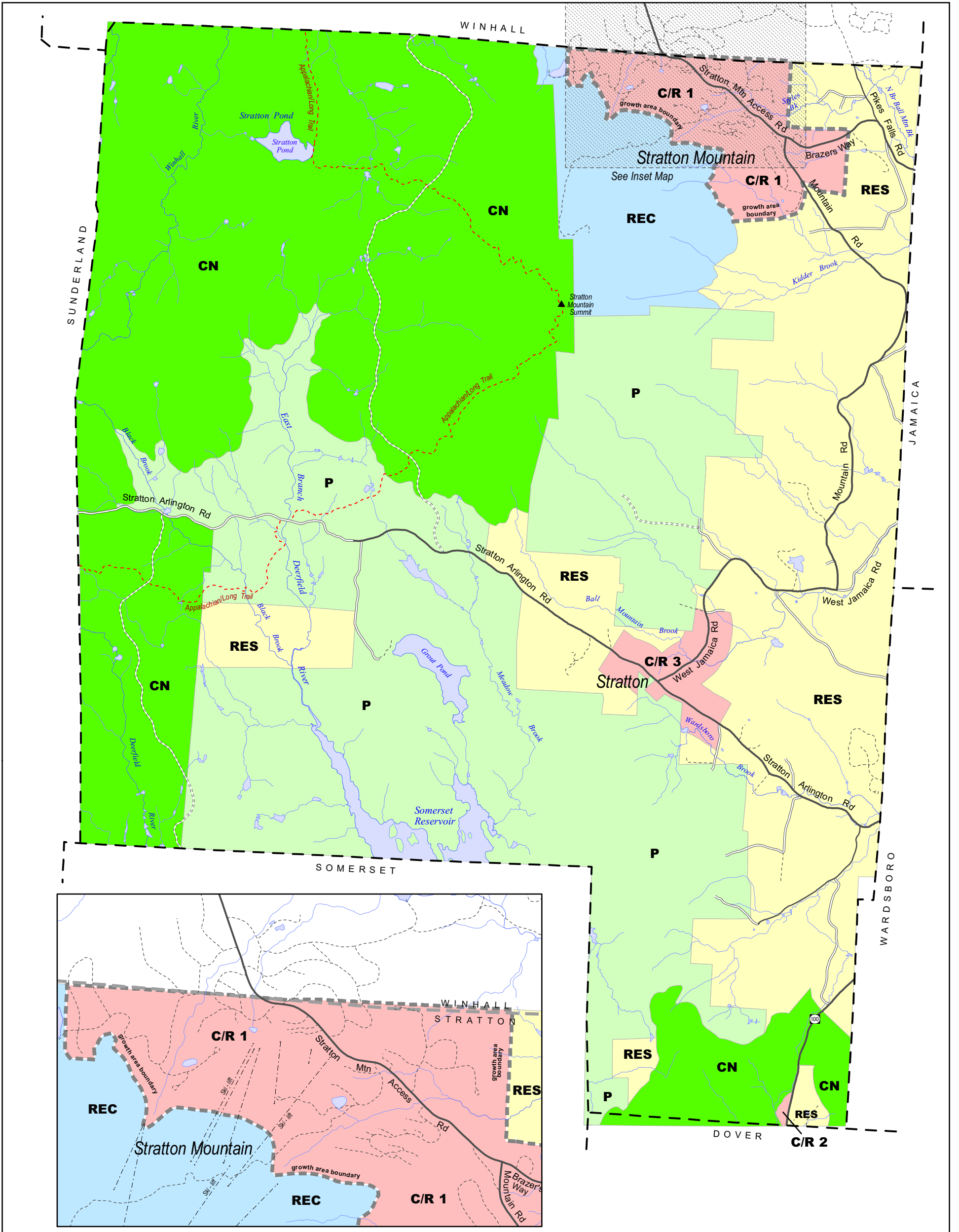
- Deer wintering area
- Wetland
- Stream
- River or pond
- Significant bear area
- Bear Food Sources:
 - Beech stands
 - Oak stands
 - Blueberries

- The wetlands shown are those included in the Vermont Significant Wetlands Inventory (VGIS data layer VSWI). For the most part, these data were derived from US Fish and Wildlife Service's 1:24000/1:25000 scale National Wetlands Inventory (NWI) maps. These maps show approximate locations of wetlands that are generally 3 acres or larger in size.

- Natural Heritage data are from VT Dept. of Fish and Wildlife, Nongame and Natural Heritage Program's Natural Heritage Inventory Database. This includes data on Rare, Threatened and Endangered Species and Significant Natural Communities, and on uncommon species and other features. Data released in January 2020 were used.

- Deer wintering areas were delineated by VT ANR, Department of Fish and Wildlife. Digital data released in January 2019 were used.

- Surface waters are from the Vermont Hydrography Dataset (VGIS data layer SWnnnnnn). The dataset was generated at a scale of 1:5000 and was developed using digital orthophotos, topographic maps, color infra-red aerial photography and other ancillary data sources.



Inset map scale - 1:24,000

Proposed Land Use Town of Stratton, Vt. 2020

1:48,000

WINDHAM REGIONAL COMMISSION
139 Main St • Suite 505 • Brattleboro, VT 05301
(802) 257-4547 www.windhamregional.org

- R Recreation (Intensive) District
- C/R Commercial/Residential Districts
- CN Conservation Districts
- P Public, Quasi-Public & Public Utility District
- RES Residential District
- Growth Area Boundary

Sources:
- Proposed Land Use areas were established by the Stratton Planning Commission. Data were created by Cartographic Technologies, Inc. and Windham Regional Commission using existing digital data of roads, elevation, and parcel maps. Data were updated in 2020.