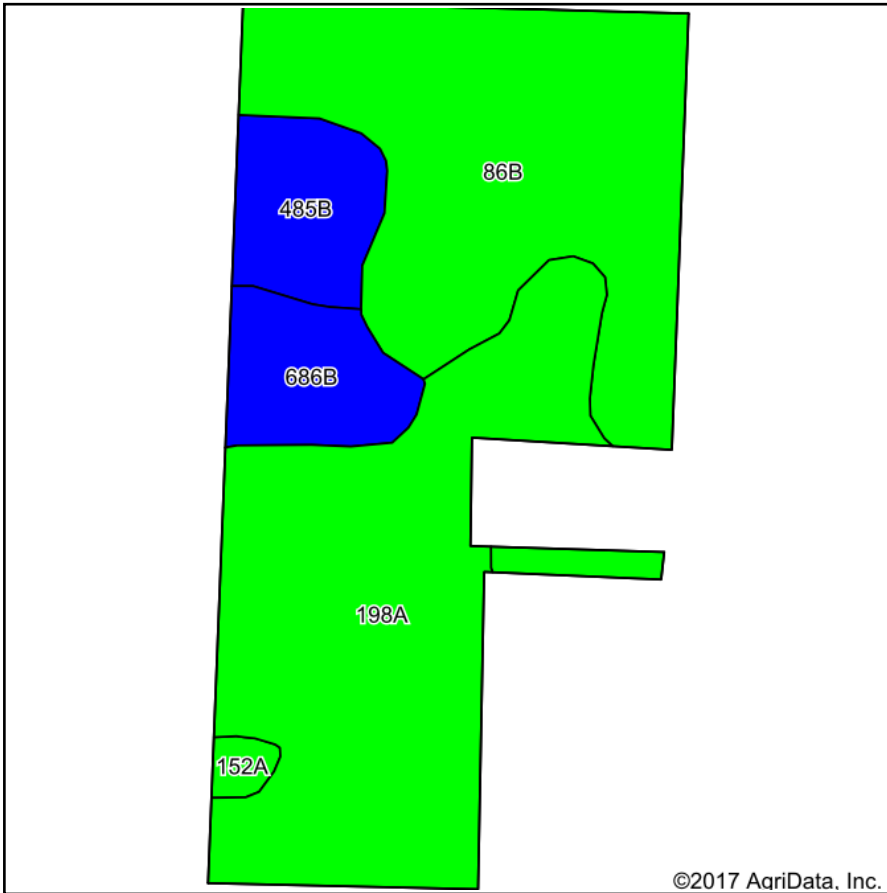
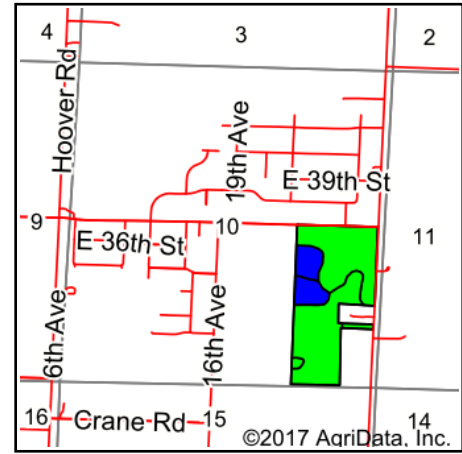


Soils Map



Soils data provided by USDA and NRCS.



State: **Illinois**
 County: **Whiteside**
 Location: **10-21N-7E**
 Township: **Sterling**
 Acres: **64.07**
 Date: **12/31/2017**

Maps Provided By:

 CUSTOMIZED ONLINE MAPPING
 © AgriData, Inc. 2017 www.AgriDataInc.com



Area Symbol: IL195, Soil Area Version: 14

Code	Soil Description	Acres	Percent of field	Il. State Productivity Index Legend	Subsoil rooting ^a	Corn Bu/A	Soybeans Bu/A	Wheat Bu/A	Oats Bu/A ^b	Sorghum ^c Bu/A	Alfalfa ^d hay, T/A	Grass-leg ^e hay, T/A	Crop productivity index for optimum management
198A	Elburn silt loam, 0 to 2 percent slopes	27.63	43.1%		FAV	197	61	74	94	0	0.00	5.77	143
**86B	Osco silt loam, 2 to 5 percent slopes	25.69	40.1%		FAV	**189	**59	**74	**101	0	**6.83	0.00	**140
**485B	Richwood silt loam, 2 to 5 percent slopes	5.06	7.9%		FAV	**184	**56	**70	**101	0	**6.45	0.00	**135
**686B	Parkway silt loam, 2 to 5 percent slopes	4.98	7.8%		FAV	**184	**58	**72	**97	0	**6.70	0.00	**137
152A	Drummer silty clay loam, 0 to 2 percent slopes	0.71	1.1%		FAV	195	63	73	100	0	0.00	5.64	144
Weighted Average						191.7	59.6	73.5	97.7	*-	3.77	2.55	140.7

Table: Optimum Crop Productivity Ratings for Illinois Soil by K.R. Olson and J.M. Lang, Office of Research, ACES, University of Illinois at Champaign-Urbana. Version: 1/2/2012 Amended Table S2 B811

Crop yields and productivity indices for optimum management (B811) are maintained at the following NRES web site:

<https://www.ideals.illinois.edu/handle/2142/1027/>

** Indexes adjusted for slope and erosion according to Bulletin 811 Table S3

^a UNF = unfavorable; FAV = favorable

^b Soils in the southern region were not rated for oats and are shown with a zero "0".

^c Soils in the northern region or in both regions were not rated for grain sorghum and are shown with a zero "0".

^d Soils in the poorly drained group were not rated for alfalfa and are shown with a zero "0".

^e Soils in the well drained group were not rated for grass-legume and are shown with a zero "0".

Soils data provided by USDA and NRCS. Soils data provided by University of Illinois at Champaign-Urbana.

*c: Using Capabilities Class Dominant Condition Aggregation Method