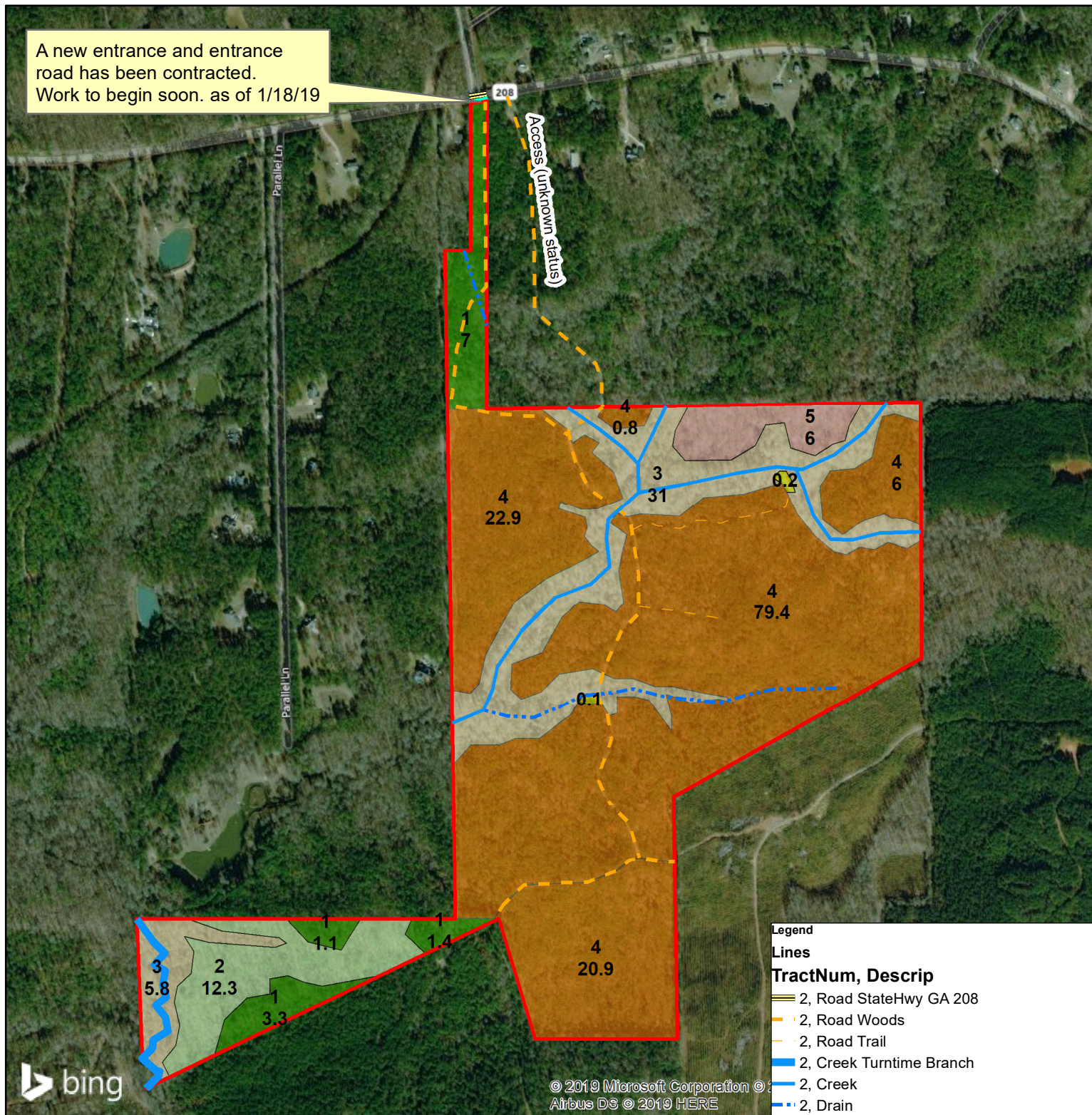


A new entrance and entrance road has been contracted.  
Work to begin soon. as of 1/18/19



#### Legend

#### Lines

#### TractNum, Descrip

- 2, Road StateHwy GA 208
- 2, Road Woods
- 2, Road Trail
- 2, Creek Turntime Branch
- 2, Creek
- 2, Drain
- 2, R/Wpower

#### TractNum, TractName

- 2, Harris GA 199

#### TractNum, StrataNum, Label, Acres+-

- 2, 201, MaUPH, 12.8ac
- 2, 202, MaUHP, 12.3ac
- 2, 203, MaBH, 36.8ac
- 2, 204, 2007UPLB, 129.9ac
- 2, 205, 2007UHP, 12.3ac, 6.0ac

#### TractNum, Label, Acres+-

- 2, Open, 0.3ac

Disclaimer: Map information is not guaranteed.  
Map is intended for management purposes.  
www.matreforestry.com 229-639-4973

## Harris GA 199 Tract (Tract 2 of 2)

## Turntime Branch Tract 2

+/-198.672 Acres (from Plat)

## Harris Co GA

Parcel 068 015; LL 9 DIST 21  
Part of Parcel 068 017  
LL 8 DIST 21 & LL 248 & 249 DIST 21

#### Key:

MaUPH = Mature Upland Pine Hardwood  
MaUHP = Mature Upland Hardwood Pine  
MaBH = Mature Bottomland Hardwood  
(Bottomland may contain upland, slope & bottom)



Date: 1/18/2019



1:9,600 1 inch equals 800 feet

0 330 660 1,320 Feet