

WILD WATER COMMISSION

COMMISSION HISTORY AND MEMBERSHIP

NOV. 9, 2025





AGENDA

- Commission History
- Members and Membership
- Capital Build (and Future Upgrades)
- Governance and Mission
- Operations
- Becoming a Member
- Advantages to Membership
- Questions

A HISTORY OF WILD WATER



MEMBERS AND MEMBERSHIP

19 Founding Members:

2 Counties
1 Town
2 Villages
14 Summer Villages
2 First Nations

(*Wabamun Dissolution = 2018
Current Members).

Prospective Members:

Alexander FN
Silver Sands
South View

Rights, Duties, and Obligations

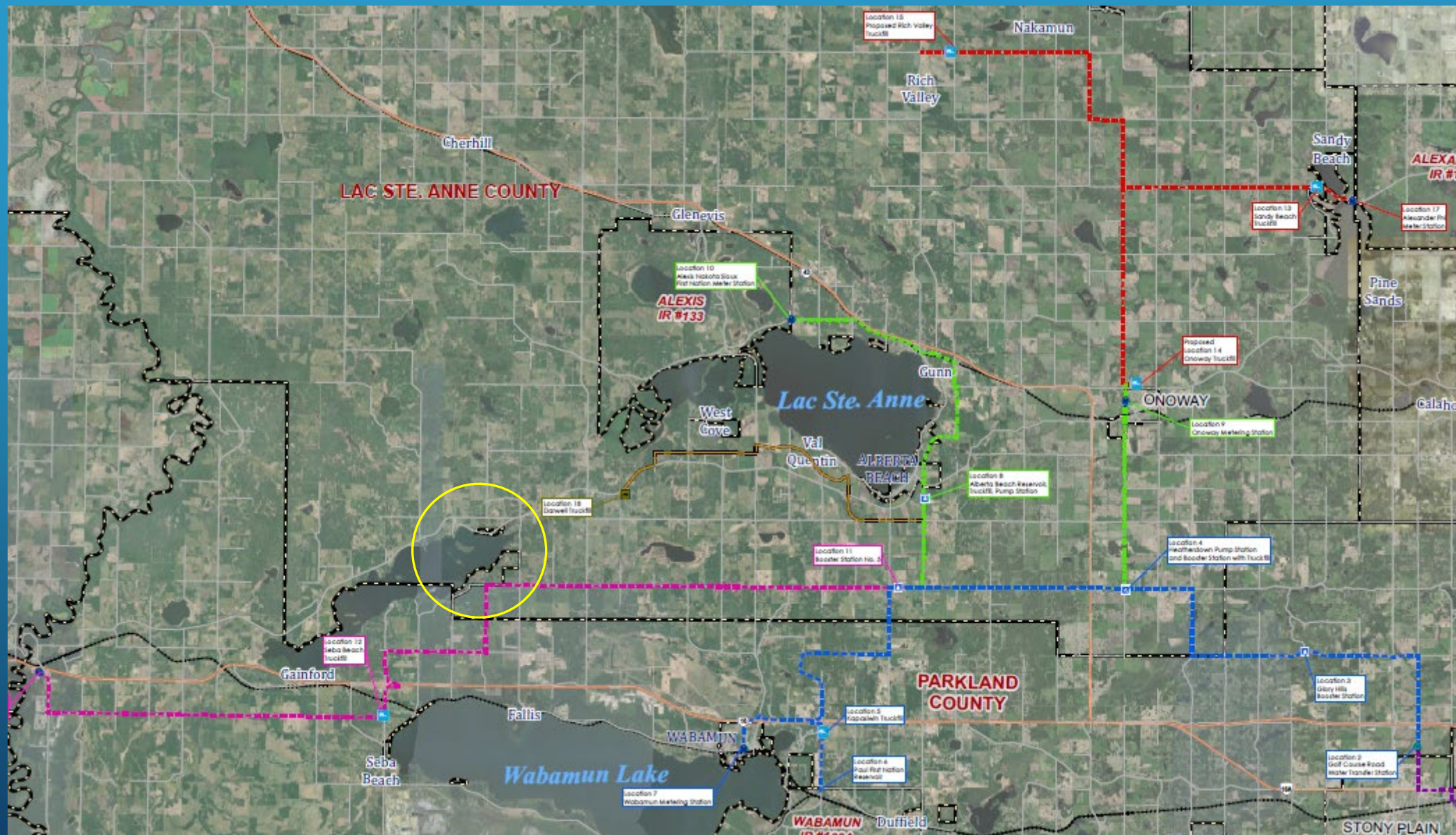
“Ownership” in the Regional Service
Commission

Obligation to Cover Capital Build (I-
V), Other Costs

Right to Appoint Representatives,
Engage, Right to Enter Water Supply
Agreement.

CAPITAL BUILDS

- “Original Build” – What the Members (via the Business Plan) Agreed to Cost Share
 - Phase I, Phase II, Phase III, Phase IV, Phase IV ~ \$82 Million in Capital
 - Transmission Lines, Booster Stations, Mechanical and Truck Fills
 - Member 10%, Debenture/Capital Costs
- “Future Builds” – Expands and Upgrades
 - Envisioned as “Commission Capital Projects” – No New Member Obligations
 - What Upgrades? ... Storage, Pumps, Twinning Lines and Mechanical (~\$40 Million)





GOVERNANCE AND MISSION

- **Regional Service Commission**
 - Similar to a Municipality, But Different
- **Board of Directors, Administration, Operations**
 - Guided by the (Revised) Business Plan
- **Bylaws, Policies, Agreements, and Regulations**
 - A Utility Service (Not a Political Operation)
- **2025 Business Plan Clarifies the Mission and Focus to Meet the Mission (Page 30 + Strategic Actions)**
 - Capital Build Supply Water Secure Allocations
- **Member Focused**



OPERATIONS: SYSTEM HIGHLIGHTS

- +200KM of Transmission Line (Monitored Daily)
- 8 Truck Fills/Stations, 7 Points of Connection (and Growing)
- Contract Operators, Contract Manager and Admin Staff, Project Managers and Engineering Staff
- ~\$3,000,000/year Operating Budget (2025)
- System Capacity – 2,300,000 Cubic Meters (Expected by 2043)



JOINING THE COMMISSION

- **No Existing Provision for “Customers” – Unless Also Members**
 - Pressure to Join, Secure Water Supply
- **Entry Must Mirror the “Original” Obligations:**
 - Resolutions (Or Bylaw) to:
 - Join the Commission and to Adhere to the Business Plan (Principles and Governance);
 - Payment of Capital Cost Commitment (Retroactive assignment – Buy-in Bylaw)
 - Designation of Appointment to the Board (for SVs this is via SVLSACE)
- **Bylaw 18-2023 – New Members Buy-In Bylaw**
 - Fees for Application and Capital Costs
- Application, Determination of Water Allocation (25-Year), Board Approval, Payment of Fees, Passing of Motions.



WHY JOIN?

- Water Security
 - (Current and Future Supply Within a Larger Licence)
- Water Quality
 - (Reliable Delivery, City Water ... Better in and Better Out).
- Member Rates (Cash-Needs vs. Utility-Basis Pricing):
 - Economic Incentive to Direct Connection (Rather than Truck Fills, or Private Wells/Supply)
- Engagement and Advocacy Rights:
 - Representation, Influence in Mandate/Strategic Priorities
 - Ex. SVs Reps Tweak Business Plan to Prioritize Water Quality/Watershed Initiatives
- Improve Local Services
 - Preserve Local Assets and Amenities



THANK YOU

Questions? Need More Info?

Reach out for More Info:

- www.wildwatercommission@gmail.com
- 780-967-0271

Check Out the Website:

- www.wildrwsc.com
- Also, Request Support for Public Engagement