

# PHIFER

EXTERIOR SUN CONTROL  
FABRIC



Quality Wholesale Window Coverings  
Contract • Hospitality • Healthcare • Residential

PH: 866-753-1113 FX: 203-597-8828

email: [customerservice@porterpreston.com](mailto:customerservice@porterpreston.com) [www.porterpreston.com](http://www.porterpreston.com)

SUNTEX<sup>®</sup> 95/97

WEAVING  
EXCELLENCE  
WITH  
INNOVATION



# SunTex® 95/97

BY PHIFER

| SOLAR OPTICAL PROPERTIES |    |    |    |    | SHGC/G VALUE<br>g-tot (glass & blind) |        |        |            |      |      |
|--------------------------|----|----|----|----|---------------------------------------|--------|--------|------------|------|------|
| Color                    | TS | RS | AS | TV | SINGLE                                |        |        | INSULATING |      |      |
|                          |    |    |    |    | 1/8 CL                                | 1/4 CL | 1/4 HA | 1/2 CL     | 1 CL | 1 HA |

**SUNTEX® 95** Zero Degree Profile Angle • Fabrics Installed Externally

|             |    |    |    |    |      |      |      |      |      |      |
|-------------|----|----|----|----|------|------|------|------|------|------|
| Carbon      | 6  | 10 | 84 | 10 | 0.14 | 0.14 | 0.13 | 0.10 | 0.10 | 0.10 |
| Stucco      | 14 | 48 | 38 | 13 | 0.16 | 0.16 | 0.15 | 0.14 | 0.14 | 0.12 |
| White       | 17 | 70 | 13 | 16 | 0.17 | 0.17 | 0.16 | 0.15 | 0.14 | 0.12 |
| White/Grey  | 12 | 54 | 34 | 12 | 0.14 | 0.14 | 0.13 | 0.12 | 0.12 | 0.10 |
| Sand        | 12 | 44 | 44 | 7  | 0.15 | 0.15 | 0.14 | 0.13 | 0.12 | 0.11 |
| Alpaca      | 11 | 39 | 50 | 11 | 0.15 | 0.15 | 0.14 | 0.12 | 0.12 | 0.10 |
| Chestnut    | 11 | 39 | 50 | 9  | 0.15 | 0.15 | 0.14 | 0.12 | 0.12 | 0.11 |
| Mocha       | 8  | 22 | 70 | 9  | 0.14 | 0.14 | 0.14 | 0.11 | 0.11 | 0.10 |
| Dark Bronze | 8  | 5  | 87 | 11 | 0.16 | 0.16 | 0.16 | 0.12 | 0.12 | 0.11 |
| Black       | 7  | 3  | 90 | 10 | 0.16 | 0.16 | 0.15 | 0.12 | 0.12 | 0.11 |

**SUNTEX® 97** Zero Degree Profile Angle • Fabrics Installed Externally

|             |    |    |    |    |      |      |      |      |      |      |
|-------------|----|----|----|----|------|------|------|------|------|------|
| Carbon      | 4  | 11 | 85 | 4  | 0.12 | 0.12 | 0.12 | 0.09 | 0.09 | 0.08 |
| Stucco      | 10 | 50 | 40 | 6  | 0.13 | 0.13 | 0.12 | 0.11 | 0.11 | 0.09 |
| White       | 15 | 76 | 9  | 12 | 0.15 | 0.15 | 0.14 | 0.13 | 0.13 | 0.10 |
| White/Grey  | 9  | 51 | 40 | 7  | 0.12 | 0.12 | 0.11 | 0.10 | 0.10 | 0.09 |
| Sand        | 9  | 46 | 45 | 5  | 0.13 | 0.13 | 0.12 | 0.10 | 0.10 | 0.09 |
| Alpaca      | 9  | 44 | 47 | 4  | 0.13 | 0.13 | 0.12 | 0.11 | 0.10 | 0.09 |
| Chestnut    | 7  | 37 | 56 | 4  | 0.12 | 0.12 | 0.11 | 0.10 | 0.09 | 0.09 |
| Mocha       | 4  | 22 | 74 | 3  | 0.11 | 0.11 | 0.11 | 0.08 | 0.08 | 0.08 |
| Dark Bronze | 3  | 5  | 92 | 3  | 0.12 | 0.12 | 0.12 | 0.09 | 0.09 | 0.08 |
| Black       | 3  | 4  | 93 | 3  | 0.12 | 0.12 | 0.12 | 0.09 | 0.09 | 0.09 |

PROTECTION THAT LIVES ON  
**MICROBAN®**  
Microban® antimicrobial protection inhibits the growth of stain-causing bacteria, mold and mildew on the shade.



MIF SEAL OF APPROVAL



TS = Solar Transmittance  
RS = Solar Reflectance  
AS = Solar Absorptance  
TV = Visual Transmittance

SHGC = Solar Heat Gain Coefficient

1/8 CL = 1/8" Clear Glass  
1/4 CL = 1/4" Clear Glass  
1/4 HA = 1/4" Heat Absorbing Glass  
1/2 CL = 1/2" Insulating Clear Glass  
1 CL = 1" Insulating Clear Glass  
1 HA = 1" Insulating Heat Absorbing Glass

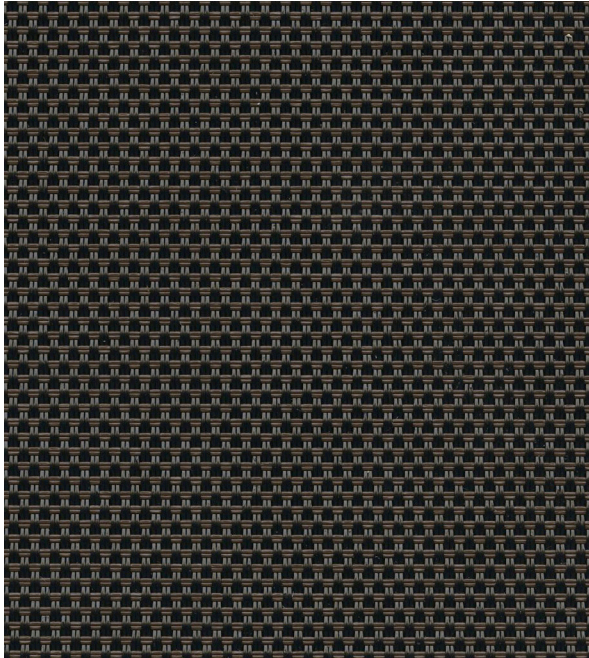
The solar optical properties are used to calculate the solar heat gain coefficient (SHGC). The SHGC represents the percentage of solar heat gain that is transmitted to the interior through the glass and shading system. Dark colors provide maximum glare reduction and visibility.

For additional performance values, test references and technical definitions visit us at [phifer.com](http://phifer.com).

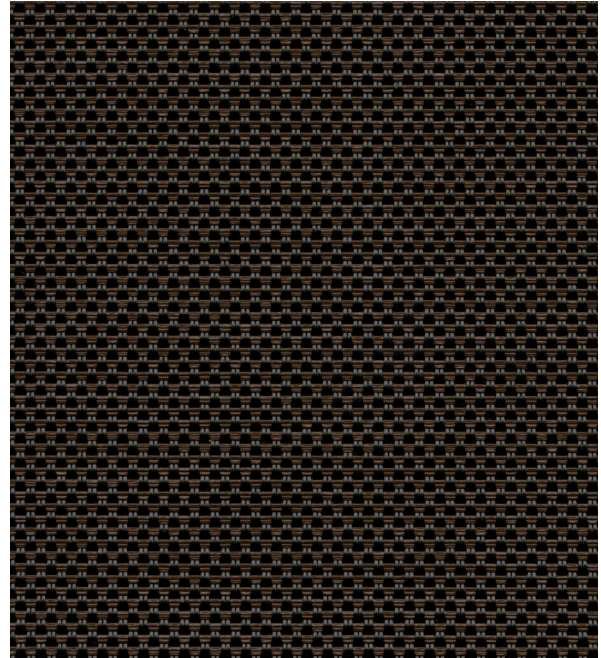
# SUNTEX 95

# SUNTEX 97

**Dark Bronze**

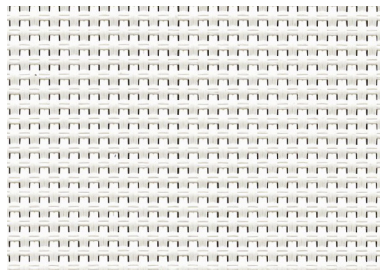


**Dark Bronze**

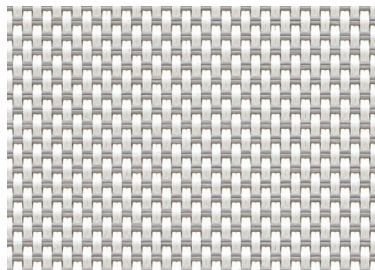


SUNTEX 95 and SUNTEX 97 are also available in the colors shown below.

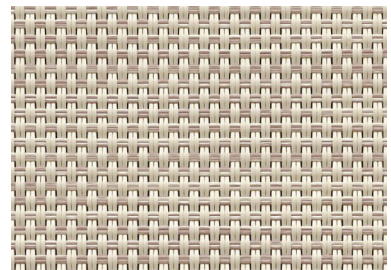
**White**



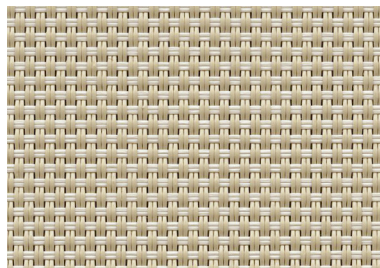
**White/Grey**



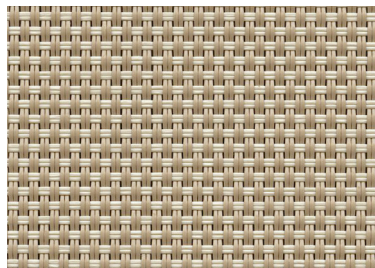
**Stucco**



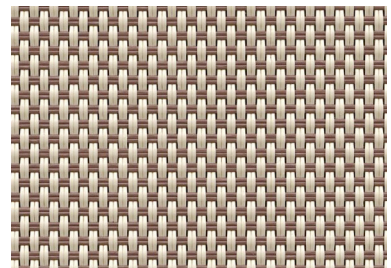
**Sand**



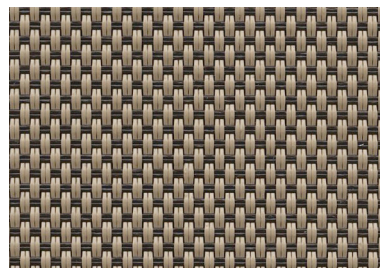
**Alpaca**



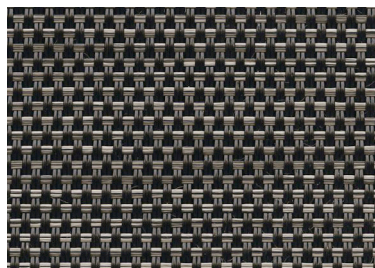
**Chestnut**



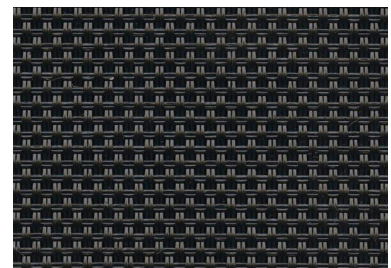
**Mocha**



**Carbon**



**Black**



\*Colors may vary based on individual computer settings and should only be used for general reference.

# SUNTEX 95/97 SPECIFICATIONS

SunTex 95/97, engineered for exterior roller shade applications, is a full basketweave vinyl-coated polyester fabric that is thinner and lighter weight than traditional SunTex. SunTex 95/97 also offers increased heat and glare control as well as daytime privacy.

|                                       |   |                           |
|---------------------------------------|---|---------------------------|
| <b>FIRE CLASSIFICATION</b>            | California Technical Bulletin 117<br>IBC Section 803.1.1 (Class A Rating)   | NFPA 101 (Class A Rating) |
| <b>BACTERIA AND FUNGAL RESISTANCE</b> | ASTM E 2180<br>Includes Microban antimicrobial additives  | ASTM G21                  |
| <b>ENVIRONMENTAL CERTIFICATION</b>    | GREENGUARD<br>Certified to these standards for low chemical emissions into indoor air during product usage  | GREENGUARD Gold           |
| <b>SAFE USE</b>                       | RoHS/Directive 2002/95/EC<br>ANSI/WCMA A 100.1-2007 for lead content<br>US Consumer Product Safety Commission Section 101<br>REACH (EC 1907/2006) compliant |                           |
| <b>WARRANTY</b>                       | 10-year exterior  |                           |
| <b>UV PROTECTION</b>                  | Seal of Approval by the Melanoma International Foundation (MIF) for effectiveness in preventing sun damage to the skin or eyes                              |                           |

| SUNTEX                         | 95   | 97   |
|--------------------------------|--|--|
| <b>WIDTHS</b>                  | 126"<br>320 cm                                     | 126"<br>320 cm                                     |
| <b>ROLL LENGTH</b>             | 90 Linear Feet<br>27.43 Linear Meters              | 90 Linear Feet<br>27.43 Linear Meters              |
| <b>COMPOSITION</b>             | 28% Polyester, 72% Vinyl on Polyester              | 28% Polyester, 72% Vinyl on Polyester              |
| <b>MESH WEIGHT</b>             | 15.1 oz/yd <sup>2</sup><br>511.98 g/m <sup>2</sup> | 16.0 oz/yd <sup>2</sup><br>542.49 g/m <sup>2</sup> |
| <b>FABRIC THICKNESS</b>        | 0.029 in<br>0.737 mm                               | 0.033 in<br>0.838 mm                               |
| <b>OPENNESS FACTOR</b>         | Approximately 5%                                   | Approximately 3%                                   |
| <b>UV BLOCKAGE</b>             | Approximately 95%                                  | Approximately 97%                                  |
| <b>BREAKING STRENGTH (LBS)</b> | 350 Warp, 235 Fill                                 | 350 Warp, 298 Fill                                 |
| <b>STIFFNESS (MG)</b>          | 524 Warp, 386 Fill                                 | 535 Warp, 433 Fill                                 |



P. O. Box 1700 • Tuscaloosa, Alabama 35403 -1700 USA  
 Phone: 205.345.2120 • FAX: 205.391.0799  
 Toll Free USA/Canada: 1.800.221.5497  
 phifer.com • ISO Registered



© SunTex is a registered trademark of PHIFER INCORPORATED.  
 © MICROBAN is a registered trademark of Microban Products Company.  
 ™ UL, the UL logos and the UL mark are trademarks of UL LLC.  
 © PHIFER INCORPORATED V21 3030867