

# "SMART" TECHNOLOGY TRAINERS



**Hampden**<sup>®</sup>  
ENGINEERING CORPORATION



Hampden leads the way in training for the “smart home” of the future...today! The “smart home” is on the verge of becoming a common reality among many home owners. Everything from lighting fixtures to home security systems can be controlled from a network control panel. We offer several trainers that demonstrate home wiring systems utilizing programmed or manual remote control of lighting and appliances and home audio, video and surveillance control. Our trainers feature Leviton® and LonWorks® components and are designed to simulate a modern high-tech residential house wiring system. Offer your students the advantage of learning real-world skills with Hampden trainers.

**Complete training for state-of-the-art home wiring system featuring Leviton® Integrated Networks components**



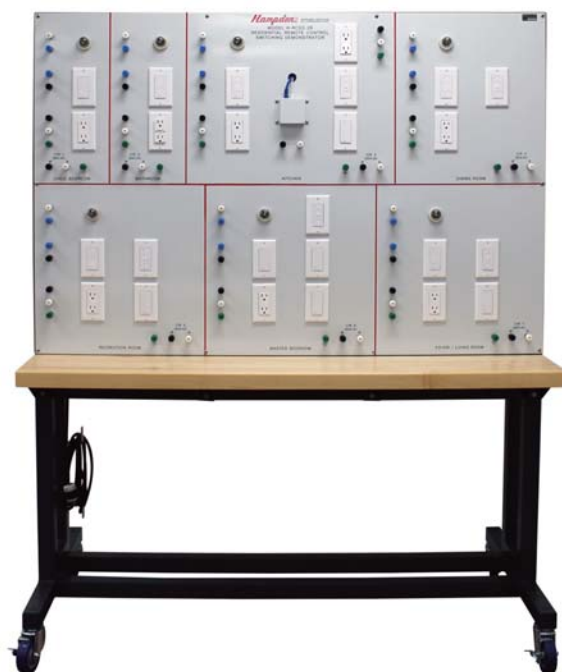
**H-RCSD-2B Residential Remote Control Switching Demonstrator**

Hampden’s **Model H-RCSD-2B** Residential Remote Control Switching Demonstrator provides a complete trainer showing a state-of-the-art home wiring system via programmed or manual remote control of lighting and appliances.

**Model H-RCSD-2B** Residential Remote Control Switching Demonstrator is based on the Leviton® ‘Caseta Home Controls’ using the various Caseta Smart Bridge Components designed to simulate a residential house wiring system including a complete comprehensive training program.

The following components are included with the **H-RCSD-2B**:

- ◆ Load Center with Circuit Breakers
- ◆ Four-button Transmitter
- ◆ Four-button Dimming Transmitter
- ◆ Two-button Transmitter
- ◆ Split Receptacle Receiver
- ◆ 3-way Master Module
- ◆ Single-pole Dimming Receptacle Receiver
- ◆ 3-way Slave Receiver
- ◆ Four-address Programmer
- ◆ 3-way Incandescent Dimmer Module
- ◆ Fixture Relay Module
- ◆ All lights On/Off Transmitter
- ◆ Lamp Module with 7.5 watt lamp
- ◆ GFI Duplex Receptacle
- ◆ SPST Toggle Switch



Model H-RCSD-2B

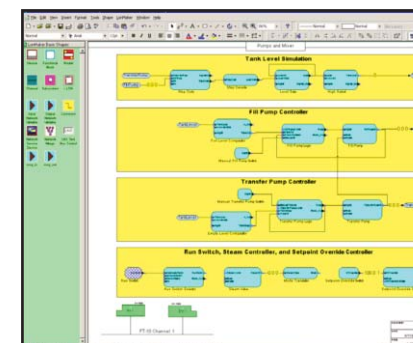
**Instructor insertable faults teach troubleshooting techniques and skills**

**H-RCSD-3B Residential/Commercial Remote Control Switching Demonstrator**

Hampden’s **Model H-RCSD-3B** Residential/Commercial Remote Control Switching Demonstrator provides a complete trainer showing a state-of-the-art building wiring system control of lighting and appliances via programmed or manual remote.

The following components are included with the **Model H-RCSD-3B**:

- |                                    |                                     |
|------------------------------------|-------------------------------------|
| ◆ Analog Input Modules (7)         | ◆ Analog Output Modules (7)         |
| ◆ Wall Switch                      | ◆ Dimmer Stipple Wall Switch        |
| ◆ Network Relay                    | ◆ Load Center w/Circuit Breakers    |
| ◆ Occupancy Sensor                 | ◆ Dual Relay Switching Unit         |
| ◆ Digital Thermostat               | ◆ Scheduler Module                  |
| ◆ Dimmer Control Units (2)         | ◆ Smoke Detector                    |
| ◆ Fire Alarm                       | ◆ Security Control Module           |
| ◆ Keypad                           | ◆ Colored Lamps w/Sockets (8)       |
| ◆ 12V.DC Power Supply              | ◆ 24V.DC Power Supply               |
| ◆ Fluorescent Lamps w/Fixtures (2) | ◆ PCC-10 Interface Module           |
| ◆ Protocol Analyzer                | ◆ Instructor Insertable Faults (12) |
| ◆ Lon Maker for Windows™           |                                     |



**MODEL H-RCSD-3B**  
Dimensions: 72"H x 60"W x 28"D Shipping Weight: 600 lbs

*Simulate a residential/ commercial wiring sytem with LonWorks® Control System*

The **Model H-RCSD-3A** includes a comprehensive training program

## “SMART” TECHNOLOGY TRAINERS



Model H-RCSD-4 Front View

### H-RCSD-4 Home Audio, Video and Surveillance Control Wiring Demonstrator

The Hampden **Model H-RCSD-4** Home Audio, Video and Surveillance Control Wiring Demonstrator provides a complete trainer showing a state-of-the-art home wiring system.

The Hampden **Model H-RCSD-4** Home Audio, Video and Surveillance Control Wiring Demonstrator is based on Leviton® components and designed to simulate a modern high-tech residential wiring system. The system takes the student through the complete installation, from making connection to programming the controls. Instructor insertable faults are included to teach troubleshooting techniques and skills.



Model H-RCSD-4  
Inside Front Panel

The **Model H-RCSD-4** includes the following components:

- ◆ Tel/Data Module
- ◆ Router
- ◆ Video Sequencer
- ◆ Passive Audio
- ◆ Indoor Cameras
- ◆ CAT 5E Data Sacks
- ◆ CAT 5E Module
- ◆ RJ45 Connectors
- ◆ Tools
- ◆ Passive Splitter
- ◆ LCD Monitor
- ◆ RF Modules
- ◆ Video Modulators
- ◆ Digital Volume Control
- ◆ Power Supply
- ◆ Speakers
- ◆ Audio Control
- ◆ F Connectors
- ◆ Video Amplifier
- ◆ Audio Amplifier
- ◆ RCA Connectors
- ◆ Wall Plates
- ◆ CAT 5E Patch Cords



Model H-RCSD-4 Rear View



Hampden is committed to providing industry-leading technology.

For the latest from Hampden, visit our home page at <http://www.hampden.com> or e-mail us at [sales@hampden.com](mailto:sales@hampden.com)

**Hampden**<sup>®</sup>  
ENGINEERING CORPORATION

99 Shaker Road P.O. Box 563, East Longmeadow, MA 01028-0563 • TEL. (413) 525-3981 • (888) HEC-CORP • FAX (413) 525-4741