

9 Year Lake Arrowhead Bass Catch 2014-2022

| <u>Year</u> | <u>Fishing Days</u> | <u>Total Bass</u> | <u>Bass Caught Per Trip</u> | <u>Bass Harvested</u> |
|---------------------|---------------------|-------------------|-----------------------------|---------------------------|
| 2014 | 20 | 600 | 30 | 0 |
| 2015 | 16 | 369 | 23 | 30 |
| 2016 | 28 | 717 | 25 | 117 (16.3% of total) |
| 2017 | 31 | 691 | 22 | 147 (21.3% of total) |
| 2018 | 20 | 430 | 21 | 85 (20% of total) |
| 2019 | 18 | 208 | 11.5 | 9 (4% of total) |
| 2020 | 24 | 261 | 11 | 0 |
| 2021 | 18 | 472 | 26 | 0 |
| 2022 | 21 | 578 | 27 | 101 (17% of total) |
| 9 Year Total | 196 | 4,326 | 22 | 489 (11% of total) |

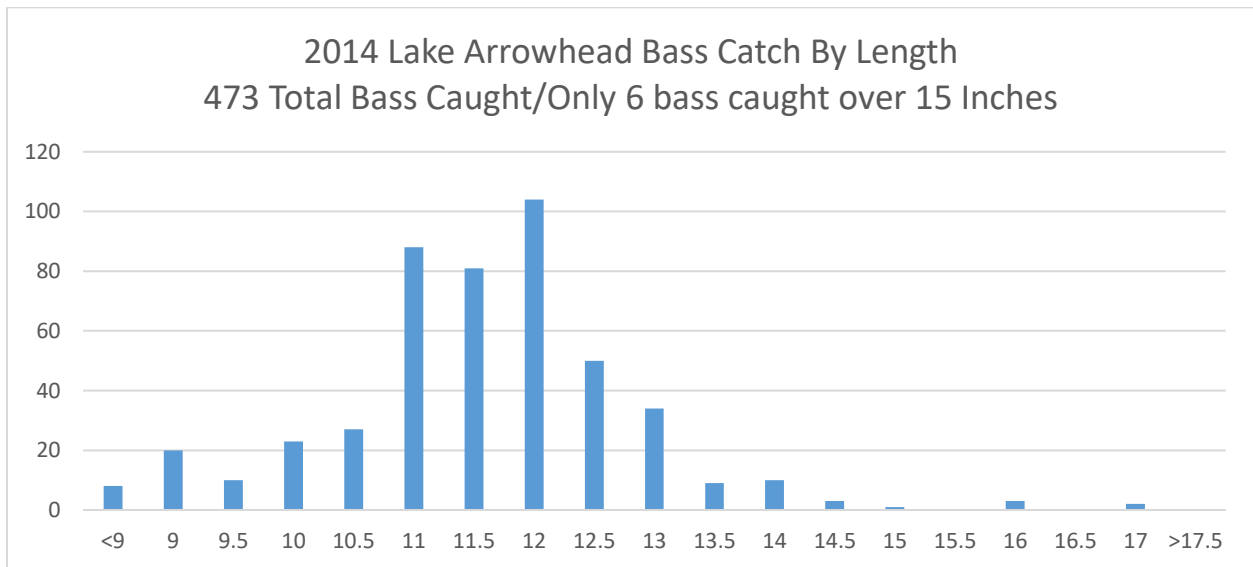
***Days fished/total bass/bass catch/bass harvested # are for Adam Bueltel catch only/not all anglers.**

***Bass Harvest Permit needed to harvest largemouth bass under 15" minimum length limit for Nebraska Private Waters.**

| <u>Year</u> | <u>Average Length</u> | <u>Average Weight</u> | <u>Average RW%</u> | <u>% of bass caught over 15+inch</u> |
|-------------|-----------------------|-----------------------|--------------------|--------------------------------------|
| 2014 | ? | ? | ? | 1.2% |
| 2015 | 12.01 inch | .90 lbs. | ? | 2.4% |
| 2016 | 12.37 inch | .97 lbs. | 91.3% | 6.69% |
| 2017 | 12.80 inch | 1.09 lbs. | 91.4% | 12.5% |
| 2018 | 13.23 inch | 1.15 lbs. | 88% | 16% |
| 2019 | 13.69 inch | 1.43 lbs. | 101% | 20% |
| 2020 | 13.06 inch | 1.28 lbs. | 100% | 26% |
| 2021 | 13.00 inch | 1.30 lbs. | 101% | 24.5% |
| 2022 | 13.16 inch | 1.25 lbs. | 103% | 17% |

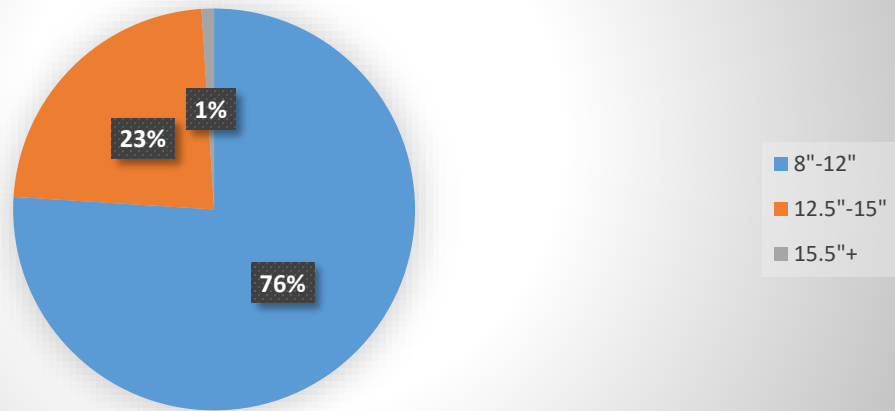
Tiger musky were first stocked in November 2015. Wipers, and walleye were also stocked starting 2013-2014. The second tiger musky stocking was November 2017. Bass harvest was limited/suspended in 2020 to make sure there were more 8-12 inch bass overall (2019-10.8%), currently (2022) we are at 25% of the bass are 8-12 inches, which is below the goal of (40%). Limited harvest of bass can be used again

in 2023 to remove skinny, unhealthy bass under 15 inches. 61% of bass caught were between 12-15.5 inches, indicating a strong population which will need to be harvested to allow larger bass more food and reach trophy potential. The third stocking of Tiger Musky (40) was in November 2021. Numerous small bass were observed all year, mostly 4-10 inch bass. 17% of the bass are now over 15 inches (2022). While the % of bass over 15 inches went down from previous years, there appear to be more 17+ inch bass overall. Numerous 17-19 inch bass were caught in the fall of 2022, these are the bass that will have the best chance at reaching trophy (5+lbs.) potential. Please practice catch and release for these fish. Larger bass help eat smaller bass, limit bass recruitment and eat larger yellow bass. The recruitment of numerous small bass indicate two things confirmed thru electroshocking, there are fewer tiger muskies in Lake Arrowhead than in prior years, and the added artificial habitat placed in the lake in April 2020 helped with young of the year survival for most fish including bass and bluegill which reproduce well in Lake Arrowhead. The electroshocking survey done in June 2020 confirmed most gamefish were in good to excellent condition. There were limited catches of yellow bass and no carp were caught. The next lake survey would be 2025.

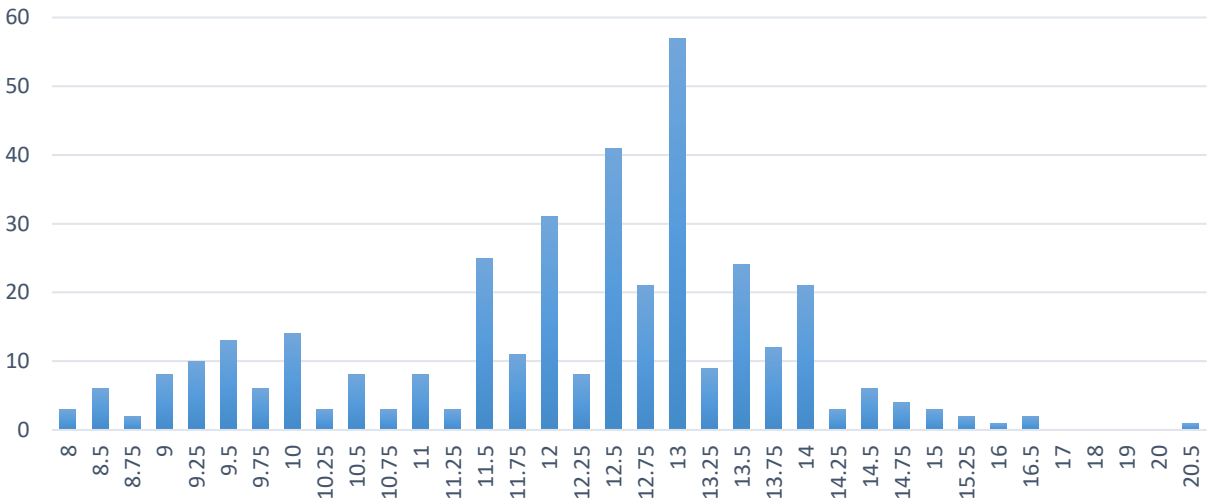


2014 Lake Arrowhead Bass Catch By Length

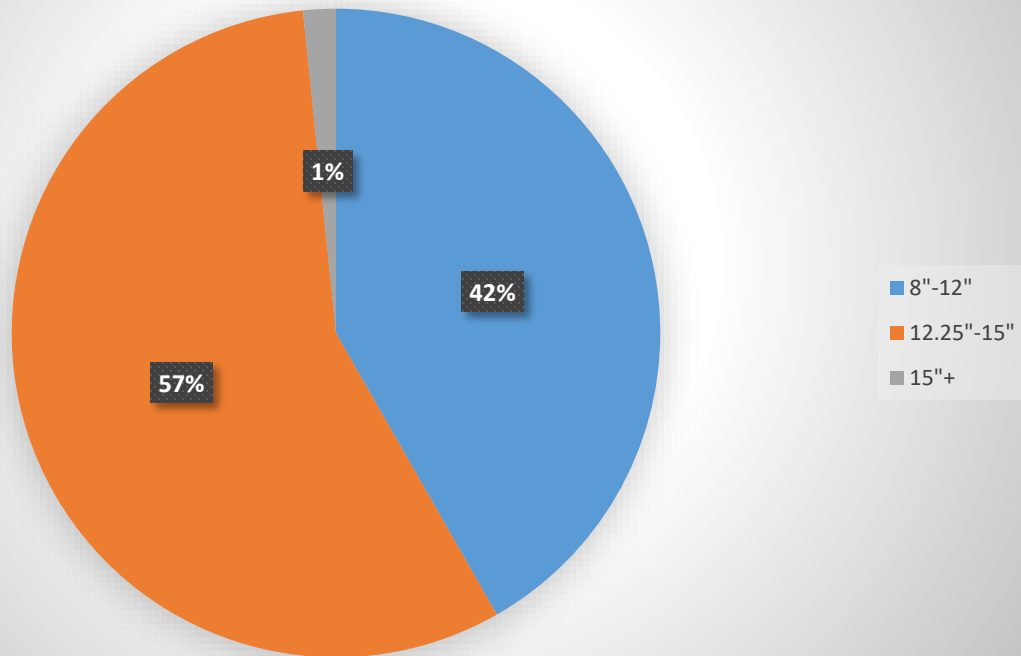
Goal is 8"-12" 40%/12.25"-15" 40%/15.25"+ 20%



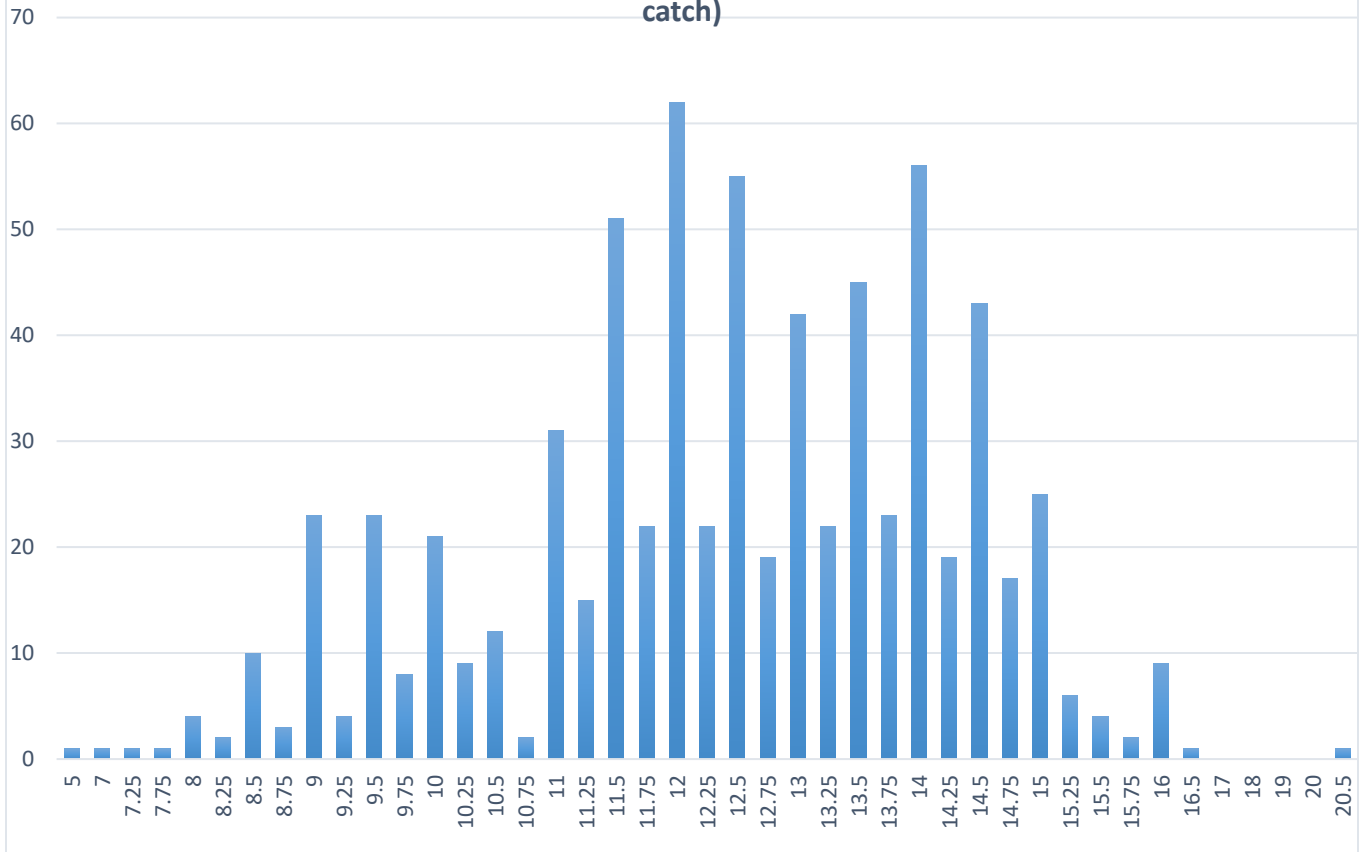
2015 Lake Arrowhead bass catch by length
369 total bass



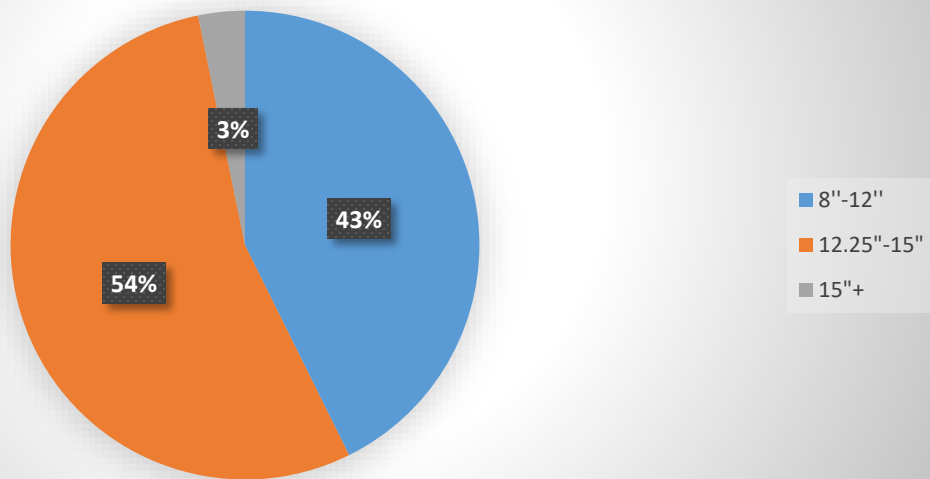
2015 Lake Arrowhead bass catch by length
Goal is 8"-12" 40%/12.25"-15" 40%/15"+20%



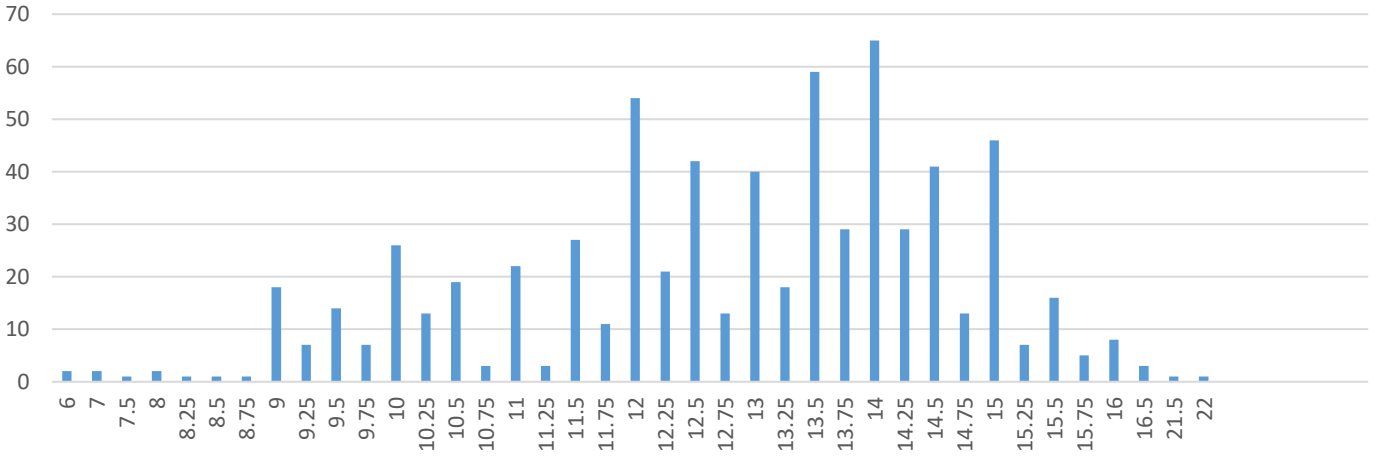
2016 Lake Arrowhead Bass catch by length
717 Total Bass/Relative Weight is 91.3%/Goal is 95-100%
123 of 695 bass weighed were at 100% or better relative weight (17 % of total catch)



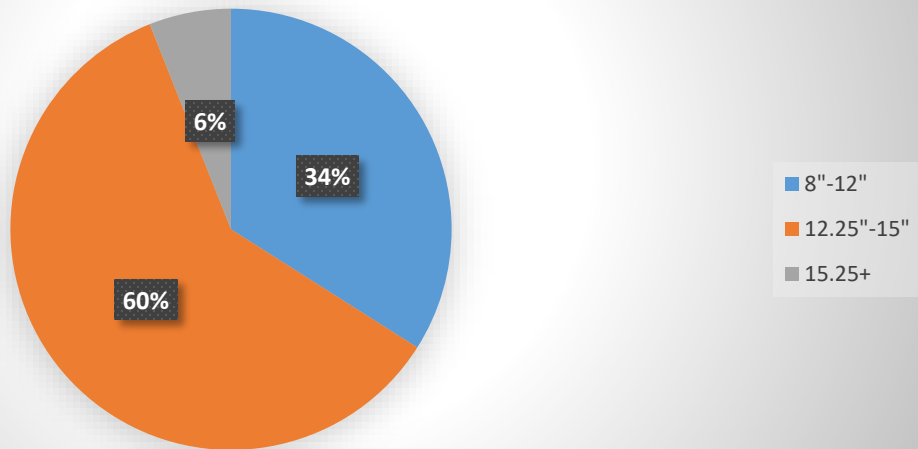
2016 Lake Arrowhead bass catch by length
Goal is 8"-12" 40%/12"-15" 40%/15"+ 20%



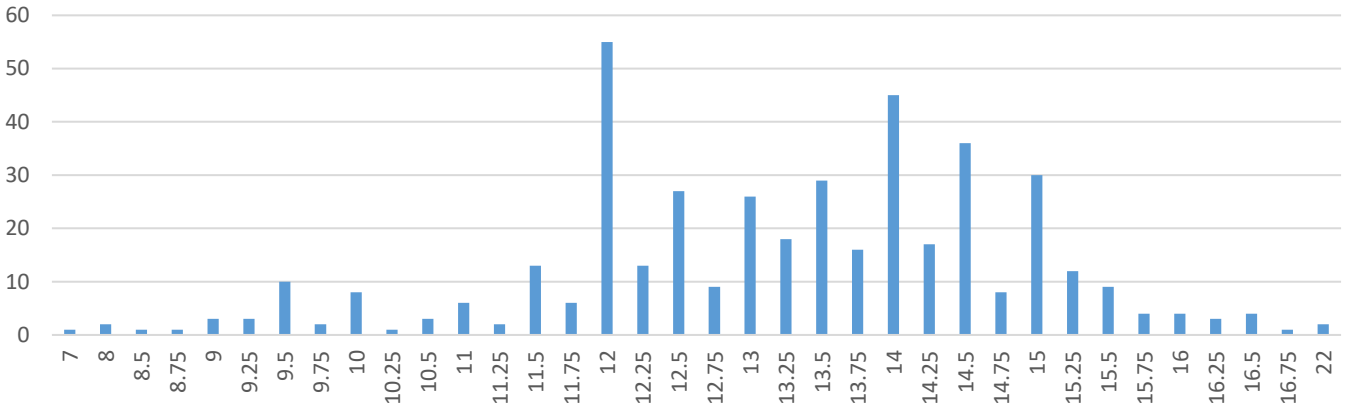
2017 Lake Arrowhead Bass Catch By Length
 691 Total Bass/Relative Weight is 91.4%/Goal is 95-100%
 134 of 691 bass weighed were at 100%+ relative weight (19.3% of total bass catch)
 Average bass length was 12.80 inch, Average lbs. was 1.09



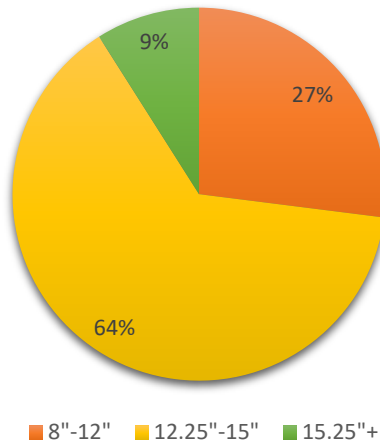
2017 Lake Arrowhead Bass Catch By Length
 Goal is 8"-12" 40%/12.25"-15" 40%/ 15.25+ 20%



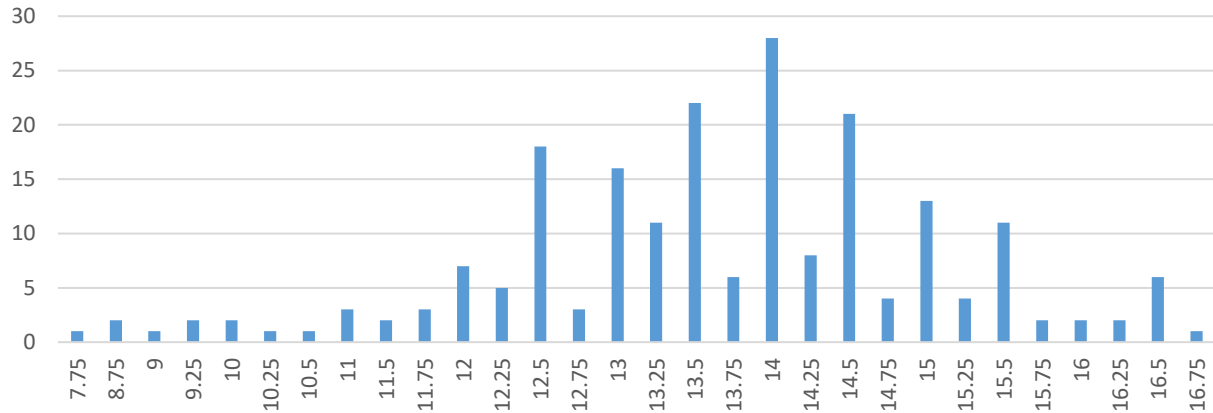
2018 Lake Arrowhead Bass Catch By Length
 430 Total Bass/15+Inch bass (69) 16.02% of total catch
 2017 15+ Inch bass (87) 12.5% of total catch
 2016 15+ Inch bass (48) 6.6% of total catch
 2015 15+ Inch bass (9) 2.4% of total catch
 Largest bass/22 inch (2)



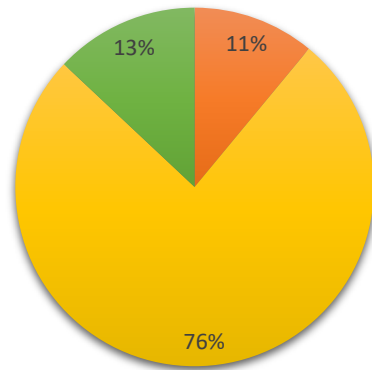
2018 Lake Arrowhead bass catch by length/430 Total Bass
 Goal is 8"-12" 40%/12.25"-15" 40%/15.25+ 20%



2019 Lake Arrowhead Bass Catch By Length
 208 Total Bass Caught/Avg Length-13.62 in, Avg lbs.-1.43 lbs.,
 Avg RW-101%
 20% of bass over 15+ Inches

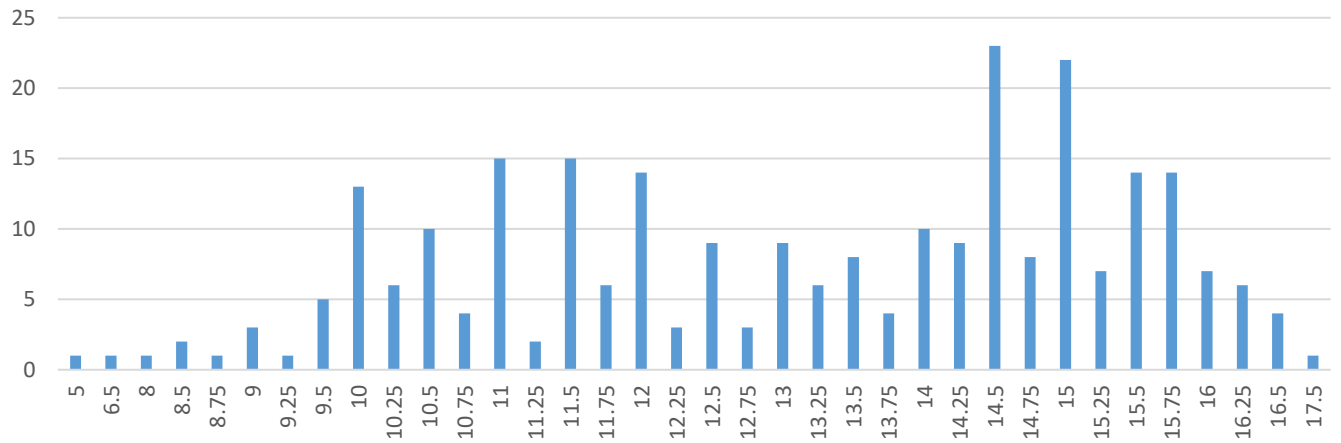


2019 Lake Arrowhead bass catch by length/208 Total Bass
 Goal is 8"-12"=40%/12.25"-15"=40%/15.25"+=20%

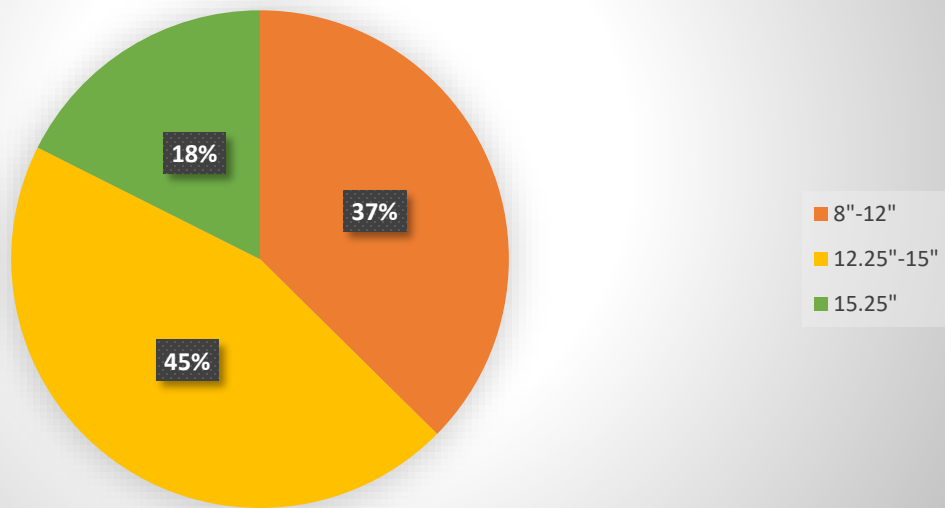


■ 8"-12" ■ 12.25"-15" ■ 15.25"+

2020 Lake Arrowhead Largemouth Bass Catch By Length
 261 Total Bass 13.06 Inch Avg. Length/1.28 lbs Avg. Weight
 100% Avg Relative Weight (RW)
 69 Bass over 15+ inches=26% of total bass catch
 19 Bass over 16+ inches=7% of total bass catch



2020 Lake Arrowhead L. Bass catch by length/261
 Largemouth Bass Goal is 8"-12"=40%, 12.25"-
 15"=40%, 15.25"+=20%

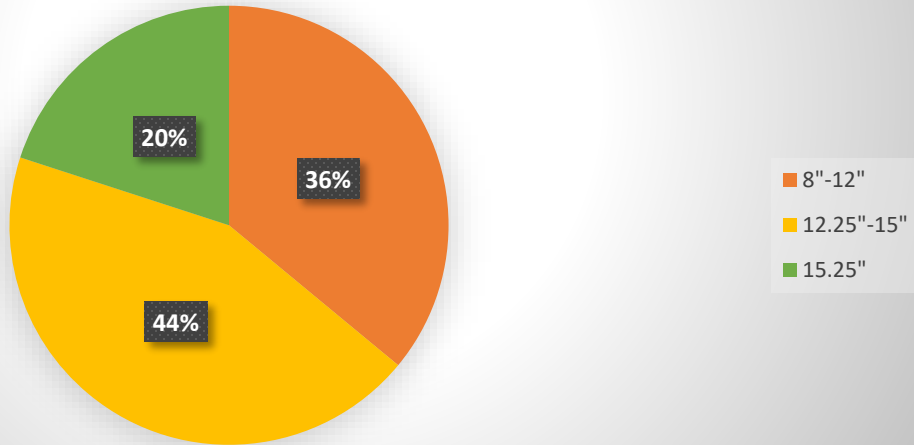


2021 Lake Arrowhead L. Bass catch by length

472 Largemouth Bass

Goal is 8"-12"=40%, 12.25"-15"=40%,

15.25"+=20%

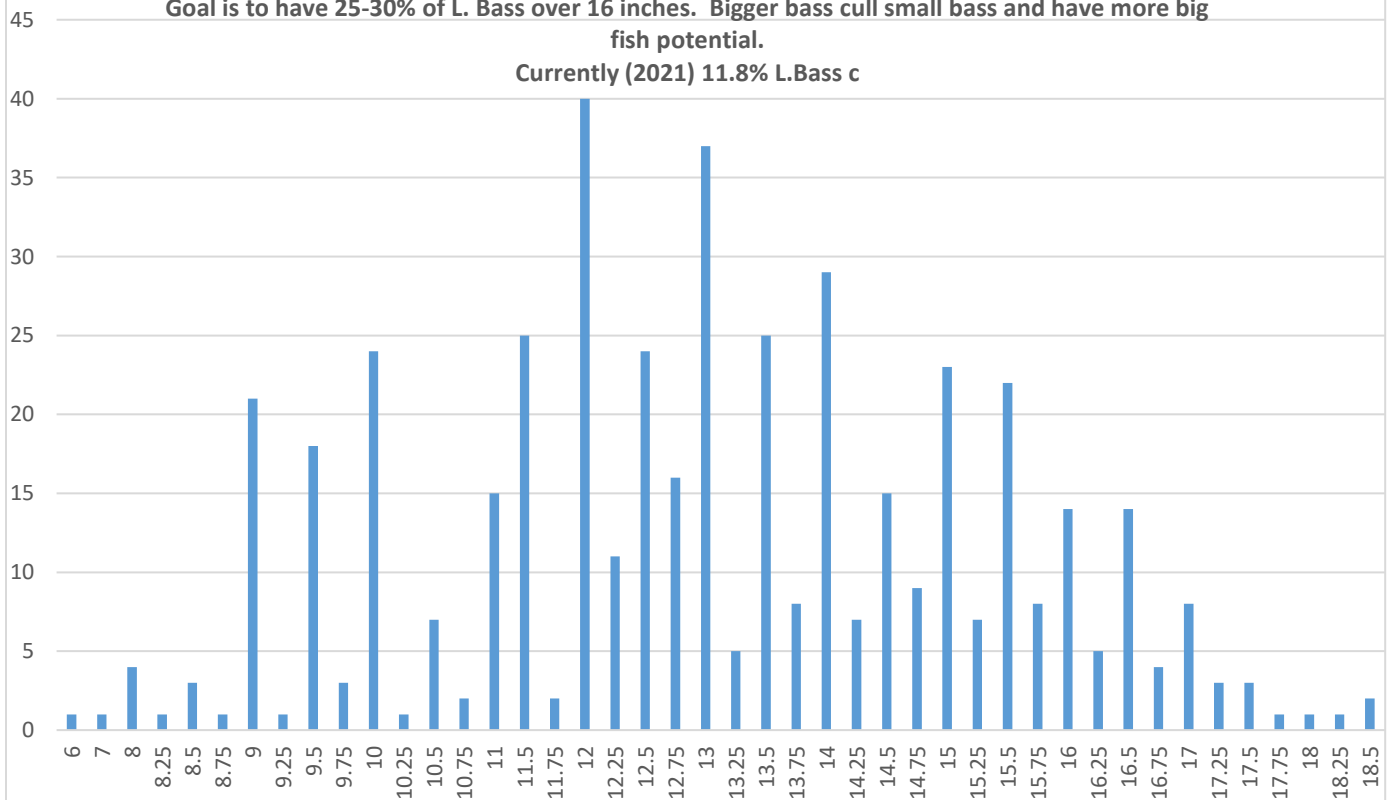


2021 Lake Arrowhead L. Bass catch by length

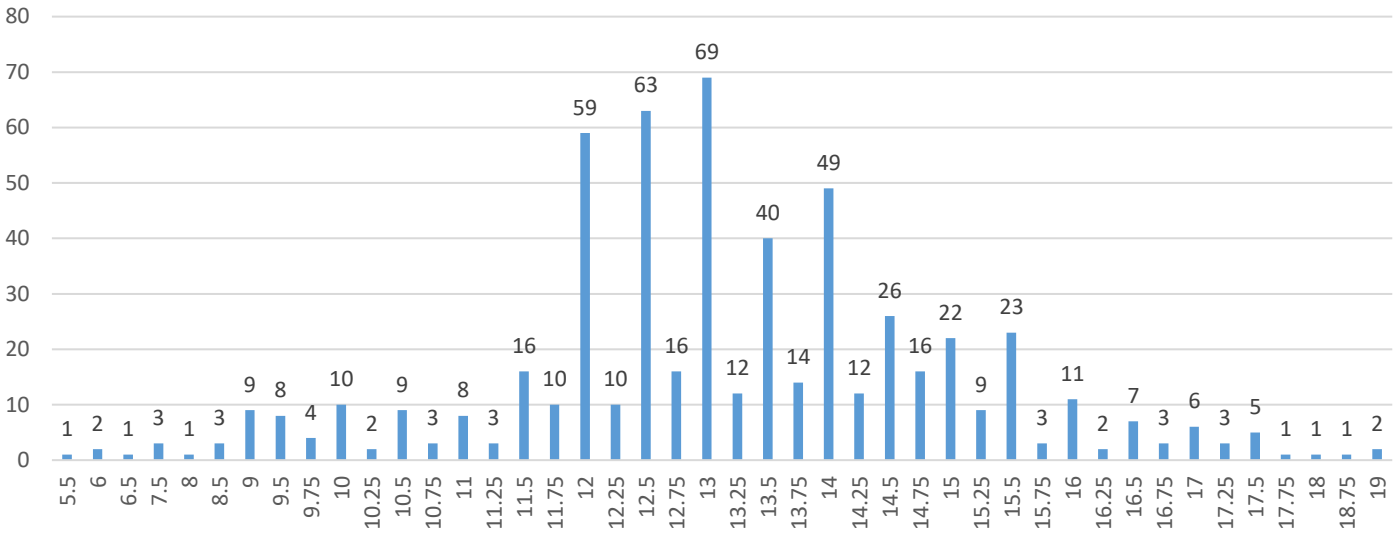
472 bass caught, avg. length 13 in. avg weight 1.30 LBS., Avg RW-101%

Goal is to have 25-30% of L. Bass over 16 inches. Bigger bass cull small bass and have more big fish potential.

Currently (2021) 11.8% L. Bass c



2022 Lake Arrowhead L. Bass catch by length
578 bass caught, avg. length 13.16 in., avg weight 1.25 lbs, Avg RW-103%
Goal is to have 25-30% of L. Bass over 16 in. Currently (2022) 7.3% of L. Bass over 16+ in.



2022 Lake Arrowhead L. Bass catch by length
578 Largemouth Bass
Goal is 8"-12"=40%, 12.25"-15"=40%, 15.25"+=20%

