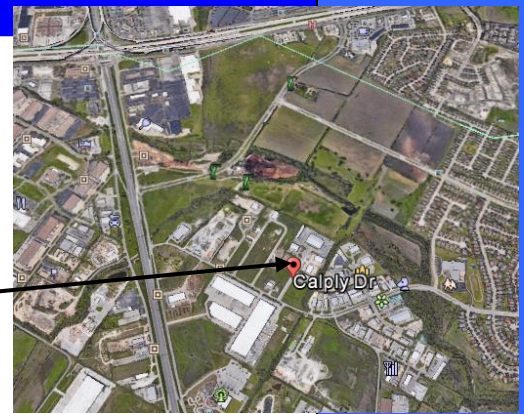
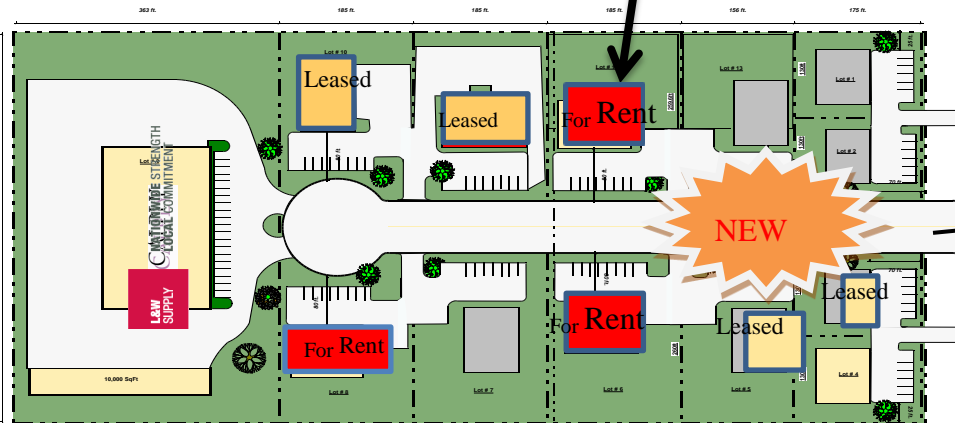
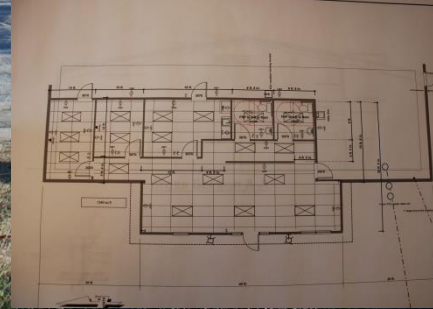


16809 CalPly Drive

This great 10,500 sq ft building with approx. 1500 sf of office/sales sits on approx. 1 acre fenced lot. The 20 eve htg building is insulated, 3 phase electrical. This property is clean and is ready to occupy



CalPly Subdivision
 CalPly Drive



Contact:
Jim Bouton, PE
Broker
512-965-2035



All Information regarding this property is from sources deemed reliable, however no independent investigation has been made of this information and no warranty or representation is made as to the accuracy thereof. This property is submitted subject to errors, omissions, change of price, withdrawal from the market, prior sale and/or other conditions. No warranties or representations are made as to any condition that may affect the value or suitability of the property and Buyer must independently verify same. All measurements, values and numbers are approximate and must be verified by Buyer prior to closing.