



# Light Industrial For Lease In Livonia

## 5,600 sq.ft. For Lease

12502 Globe St, Livonia, MI 48150

Listing ID:	
Status:	Active
Property Type:	Industrial For Lease
Industrial Type:	Flex Space, Industrial-Business Park
Contiguous Space:	5,600 SF
Total Available:	5,600 SF
Rental Rate:	Call
Lease Types:	Call
Ceiling:	16 - 18 ft.
Office SF:	2,080 SF
Drive-In Bays:	1 Bay



## Property Overview

5,600 sq.ft. available for lease by owner in the heart of Livonia's Industrial District. We have owned this building since 1967. Call REA Construction for a showing at 734-946-8730

East of Newburgh and west of Levan on the corner of Amrhien and Globe.

## Listing Details

### General Information

Listing Name:	5,600 sq.ft. For Lease	Zoning:	LIGHT INDUSTRIAL
Tax ID Number/APN:	263960770	Agent Notes:	All Brokers Welcome
Industrial Type:	Flex Space, Industrial-Business Park, Manufacturing, Mixed Use, Light Industrial, Warehouse/Distribution		

### Available Space

Suite/Unit Number:	1	Conference Rooms:	1
Suite Floor:	1	Offices:	3
Space Available:	5,600 SF	Office SF:	2,080 SF
Minimum Divisible:	5,600 SF	Parking Spaces:	12
Maximum Contiguous:	5,600 SF	Loading Docks:	0
Space Type:	Relet	Drive In Bays:	1
Lease Rate:		Ceiling Height:	18
Lease Type:	Gross Lease	Clear Height:	16
Rent Escalators:	Fixed Lease		

### Area & Location

Market Type:	Large	Property Visibility:	Excellent
Property Located Between:	Newburgh and Levan	Transportation:	Highway
Side of Street:	West	Highway Access:	I 96
Road Type:	Paved	Airports:	Detroit Metropolitan Airport

## Building Related

Tenancy:	Multiple Tenants	Construction/Siding:	Block
Total Number of Buildings:	1	Parking Type:	Surface
Number of Stories:	1	Total Parking Spaces:	12
Property Condition:	Excellent	Heat Type:	Gas
Year Built:	1967	Heat Source:	Radiant
Year Renovated:	1999	Lighting:	Fluorescent
Roof Type:	Flat		

## Land Related

Land Area: 0.50 - 0.75 Acres

## Location

Address:	12502 Globe St, Livonia, MI 48150	MSA:	Detroit-Warren-Dearborn
County:	Wayne	Submarket:	Southern I-275 Corridor



## Property Images



IMG\_2265



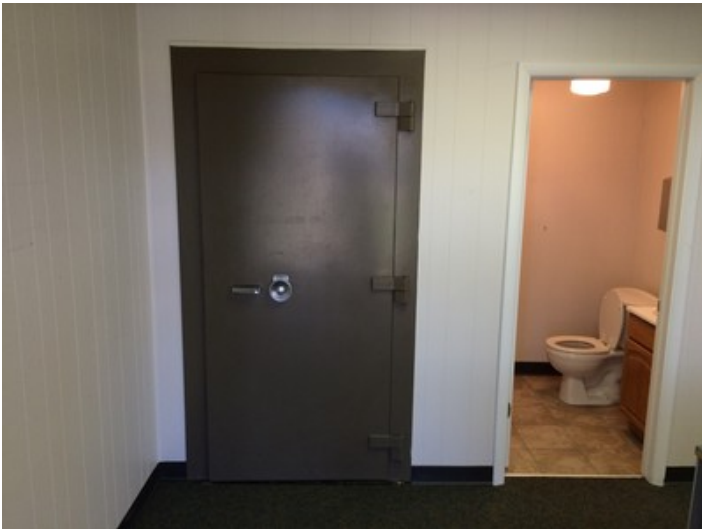
12502\_Globe\_St\_\_11\_



12502\_Globe\_St\_\_13\_



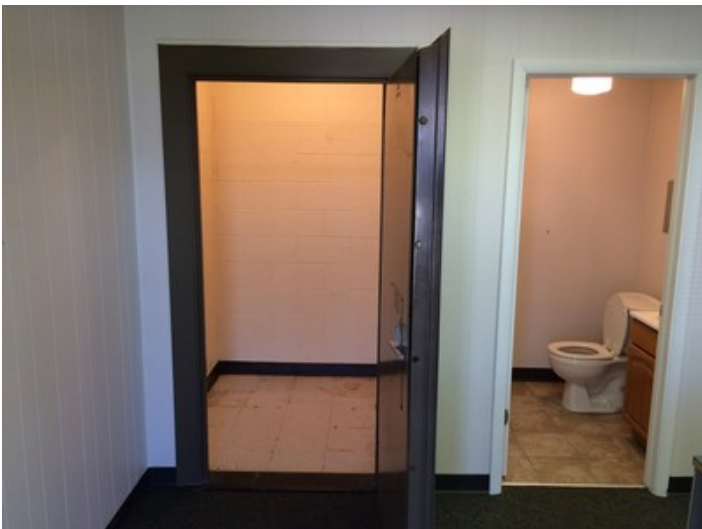
12502\_Globe\_St\_\_6\_



12502\_Globe\_St\_\_12\_



12502\_Globe\_St\_\_4\_

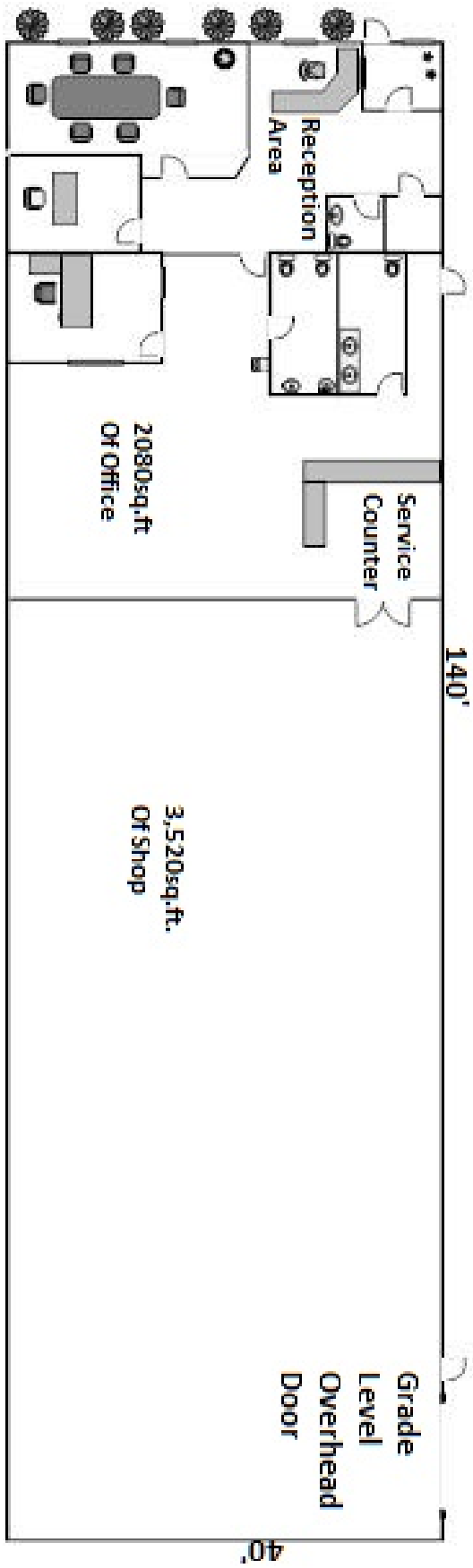


12502\_Globe\_St\_\_14\_



12502\_Globe\_St\_\_7\_





12502\_Globe\_St\_\_10\_



12502\_Globe\_St\_\_3\_



12502\_Globe\_St\_\_2\_



12502\_Globe\_St

## Property Contacts

---



Rea Construction

734-946-8730 [0]

[reaconstruction@reaconstruction.net](mailto:reaconstruction@reaconstruction.net)