



EPS 2880 SB

SMALL BEAD

WEAR RESISTANT CERAMIC/EPOXY COMPOSITE

Description

EPS 2880 SB contains small spheres of diamond hard ceramic beads that resist abrasion and small particles of silicone carbide to protect the 100% solid epoxy holding the beads. The ceramic takes the wear, the epoxy holds the beads in place. The non-sag paste conforms to any surface, and can even be applied even overhead. EPS 2880 SB adheres to most clean surface.

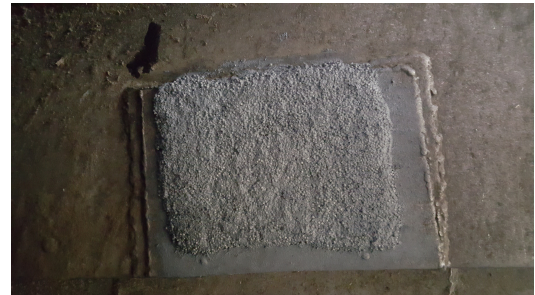
USES

For renewing and wear protection of surfaces on: pump housings, impellers, hoppers, pipe elbows, transitions, fan housings, vibrator screens, scrubbers, etc.

PHYSICAL PROPERTIES

Resin	EPX 650A
Hardener	AMN 2080B
Working Time	30 Minutes
Cure Time	6 to 8 hours
Compressive Strength	15,500 psi
Tensile Strength	5,000 psi
Hardness	90 D
Cured Density	19.3 lbs/gal

1 Week



1 Month





T. CARSON AND COMPANY
"CONVEYING A WORLD OF SOLUTIONS"

TEL: 1.800.377.7135

FAX: 1.719.488.0335

WWW.TCARSONCO.COM

P.O. BOX 995 MONUMENT, CO 80132

EPS 2880 SB

Exceptional wear resistance, reduced down time and cost savings thru speedy application on worn surfaces. EPS 2880 is easy to mix, apply and clean up. The epoxy held ceramic beads give outstanding wear resistance.

APPLICATION INSTRUCTIONS

Can be used in temperatures up to 300 Deg F. Provides 30 to 45 minutes working time and will harden in 6 to 8 hours. (One hour if heat is applied) A 20 lb. kit covers 7 sq. ft. 1/4 inch thick. A 5 lb. kit covers 1.75 sq. ft. 1/4 inch thick. Mix ratio is 4 parts resin EPX 650A to 1 part hardener AMN 2080B by volume.

STORAGE

Systems should be stored unopened in air tight containers at 60-90 degrees F.

HANDLING PRECAUTIONS

For complete and updated health and safety information, read the MATERIAL SAFETY DATA SHEETS. Do not handle or use until the MATERIAL SAFETY DATA SHEET has been read and understood.