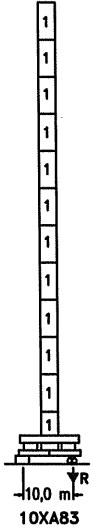


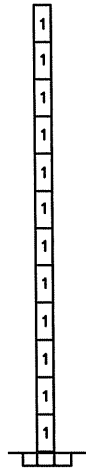
R	16,5	20	21	22	23	24	28	30	33,5	35	38	40	40,5	43	45	50	55	60	65	m
65	12000	12000	12000	12000	12000	12000	12000	11160	9900	9440	8620	8150	8040	7520	7150	6350	5700	5150	4700	
60	12000	12000	12000	12000	12000	12000	12000	12000	12000	11290	10360	9820	9800	9100	8680	7760	7010	6400		
55	12000	12000	12000	12000	12000	12000	12000	12000	12000	12000	12000	11330	11170	10450	9930	8810	7900			
50	12000	12000	12000	12000	12000	12000	12000	12000	12000	12000	12000	12000	12000	12000	11470	10810	9400			
45	12000	12000	12000	12000	12000	12000	12000	12000	12000	12000	12000	12000	12000	12000	11400					
40	12000	12000	12000	12000	12000	12000	12000	12000	12000	12000	12000	12000	12000	12000	11000					
35	12000	12000	12000	12000	12000	12000	12000	12000	12000	12000	12000	12000	12000	12000						
30	12000	12000	12000	12000	12000	12000	12000	12000	12000	12000	12000	12000	12000	12000						

(H)	(R)
m	m
46,3	65/60/55
57,3	50/45
62,8	40/35
68,3	30

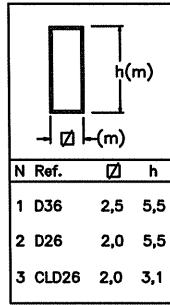
(H)	(R)
m	m
44,0	65/60/55
55,0	50/45
60,5	40/35
66,0	30



10XA83

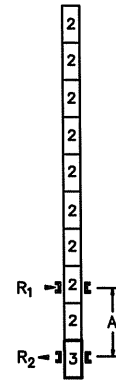


ES83

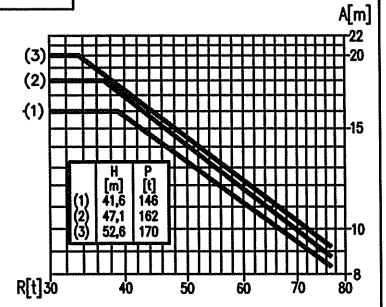


VER./CL

(H)	(R)
m	m
41,6	60/55
47,1	65/50/45/40/35
52,6	30



CL82



<b>R. máx.</b>	En servicio	10XA83 ..... 148 t
	In operation	
	En service	
	In Betrieb	

<b>R. máx.</b>	Fuera de servicio	10XA83 ..... 209 t
	Out of service	
	Hors service	
	Ausser Betrieb	

**AFU-110**

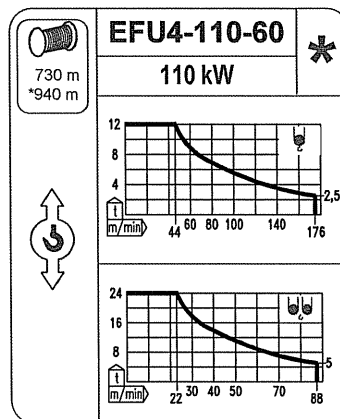
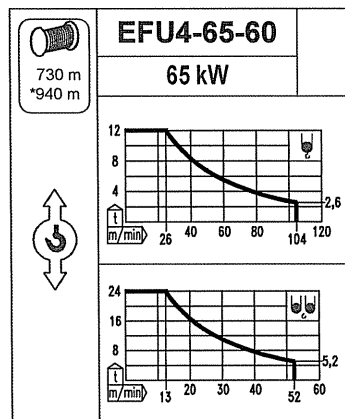
110 kW

2 min

**GR-12**

4 x 120 Nm

0 ⇨ 0,7 rpm



Tensión de alimentación	<b>400 V</b>
Operating voltage	<b>3 ph</b>
Tension de service	<b>50 Hz</b>
Betriebsspannung	

Opcional	
Optional	
En option	
Kaufoption	



Tel.: (34) 948 335 020  
 Fax: (34) 948 330 810  
 e-mail: info@comansa.com  
 www.comansa.com

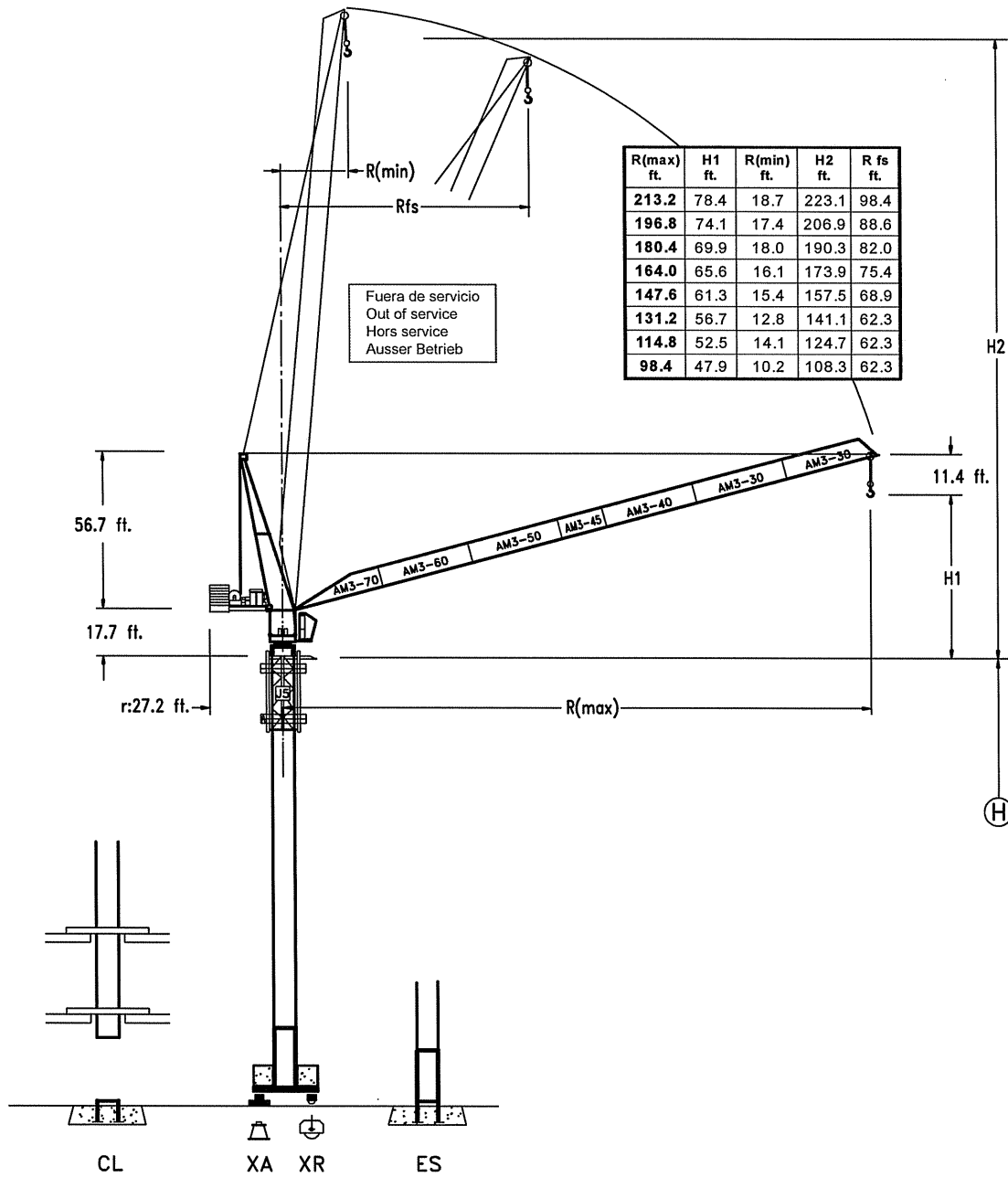
Polígono Urbizkain  
 E-31620 HUARTE-PAMPLONA.- SPAIN

<b>DS.0736.01</b>	09/07	<b>LCL-500 24 t</b>
-------------------	-------	---------------------

**LCL**

**LCL-500**

**52,900 lbs.**

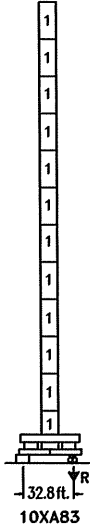


R	54.1	65.6	68.8	72.1	75.4	78.7	91.8	98.4	109.9	114.8	124.6	131.2	132.8	141.0	147.6	164.0	180.4	196.8	213.2
213.2	26,450	26,450	26,450	26,450	26,450	26,450	26,450	24,600	21,820	20,810	19,000	17,960	17,720	16,570	15,760	13,990	12,560	11,350	10,360
196.8	26,450	26,450	26,450	26,450	26,450	26,450	26,450	26,450	26,450	24,890	22,840	21,640	21,600	20,060	19,130	17,100	15,450	14,100	
	52,900	43,250	41,090	39,130	37,340	35,710	30,330	28,170	25,040	23,870	21,840	20,670	20,390	19,110	18,170	16,180	14,570	13,220	
180.4	26,450	26,450	26,450	26,450	26,450	26,450	26,450	26,450	26,450	26,450	26,450	24,970	24,620	23,030	21,890	19,420	17,410		
	52,900	52,900	50,000	47,390	45,040	42,870	35,950	33,240	29,290	27,880	25,370	23,940	23,580	22,020	20,900	18,490	16,530		
164.0	26,450	26,450	26,450	26,450	26,450	26,450	26,450	26,450	26,450	26,450	26,450	26,450	26,450	26,450	26,450	25,280	23,830	20,720	
	52,900	52,900	52,900	52,900	50,130	47,640	39,610	36,500	32,030	30,420	27,600	25,970	25,570	23,830	22,550	19,840			
147.6	26,450	26,450	26,450	26,450	26,450	26,450	26,450	26,450	26,450	26,450	26,450	26,450	26,450	26,450	26,450	25,130			
	52,900	52,900	52,900	51,360	49,030	46,890	39,920	37,120	33,060	31,570	28,960	27,420	27,070	25,410	24,250				
131.2	26,450	26,450	26,450	26,450	26,450	26,450	26,450	26,450	26,450	26,450	26,450	26,450	26,450						
	52,900	52,900	52,900	52,900	52,900	50,460	42,540	39,440	34,890	33,240	30,330	28,660							
114.8	26,450	26,450	26,450	26,450	26,450	26,450	26,450	26,450	26,450	26,450									
	52,900	52,900	52,900	52,900	52,900	52,900	52,900	52,900	45,900	42,320	37,170	35,270							
98.4	26,450	26,450	26,450	26,450	26,450	26,450	26,450	26,450											
	52,900	52,900	52,900	52,900	52,900	51,610	43,070	39,680											

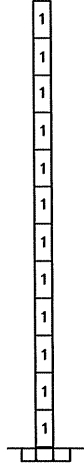
CE  
DIN 15018 H1 B3

(H)	(R)
ft.	ft.
151.9	213.2/196.8/180.4
187.9	164.0/147.6
206.0	131.2/114.8
224.0	98.4

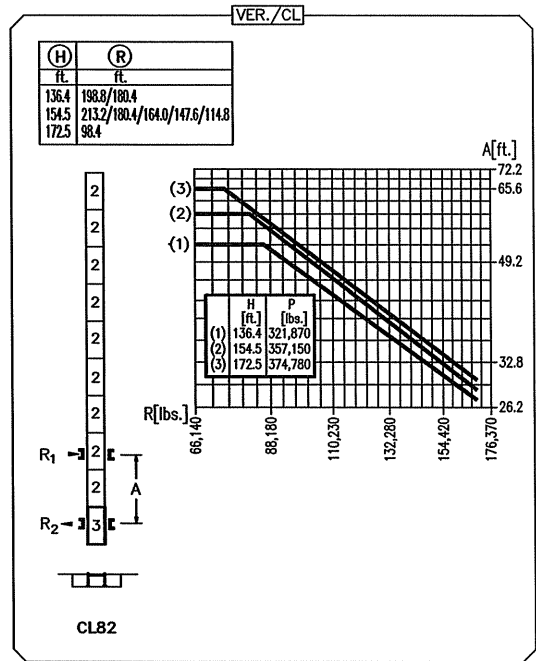
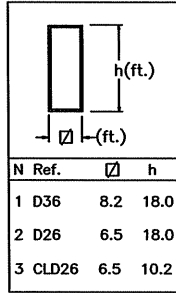
(H)	(R)
ft.	ft.
144.3	213.2/196.8/180.4
180.4	164.0/147.6
198.4	131.2/114.8
216.5	98.4



10XA83



ES83

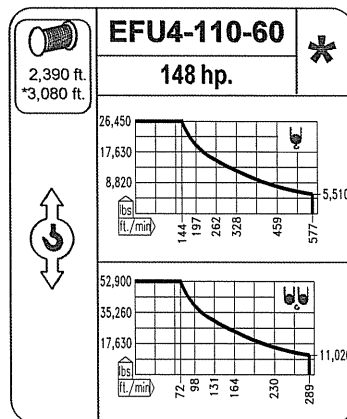
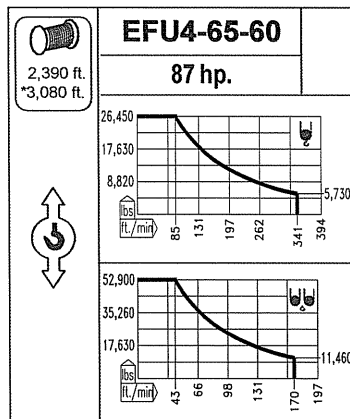


**R. máx.** En servicio  
In operation  
En service  
In Betrieb  
**10XA83 ... 326,280 lbs.**

**R. máx.** Fuera de servicio  
Out of service  
Hors service  
Ausser Betrieb  
**10XA83 .... 460,080 lbs.**

**AFU-110**  
**148 hp.**  
**2 min**

**GR-12**  
**4 x 88 ft.lbs.**  
**0 ⇄ 0,7 rpm**



Tensión de alimentación **480 V**  
Operating voltage **3 ph**  
Tension de service **60 Hz**  
Betriebsspannung

Opcional  
Optional  
En option  
Kaufoption