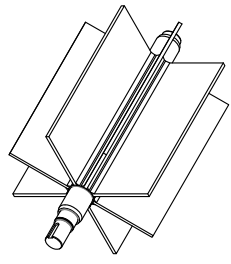
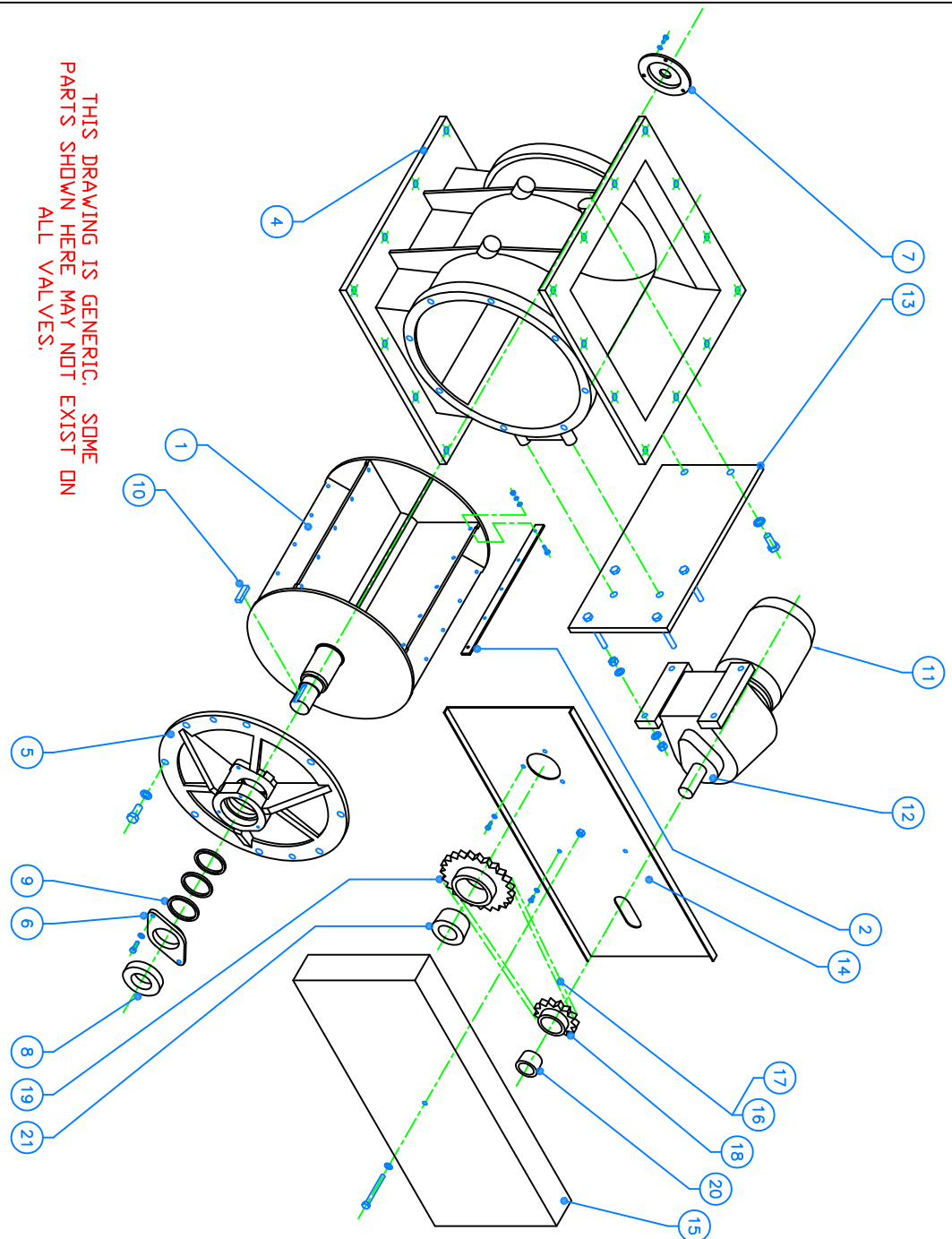



THIS DRAWING IS GENERIC. SOME PARTS SHOWN HERE MAY NOT EXIST ON ALL VALVES.



'OPEN FIXED VANE' TYPE ROTOR SHOWN ABOVE ADJUSTABLE TIP VERSION ALSO AVAILABLE

ITEM 3 - ROTOR LOCATING HARDWARE (NOT SHOWN ON THIS DRAWING) VARIES BY VALVE DESIGN ONLY NECESSARY WITH OPEN ROTORS

21	-	1	TAPER-LOCK BUSH	MS	-
20	-	1	TAPER-LOCK BUSH	MS	-
19	-	1	TAPER-LOCK SPROCKET	MS	-
18	-	1	TAPER-LOCK SPROCKET	MS	-
17	-	1	CONNECTING LINK	MS	-
16	-	-	ROLLER CHAIN	MS	-
15	-	1	DRIVE GUARD	MS	-
14	-	1	DRIVE GUARD BACK PLATE	MS	-
13	-	1	MOTOR MOUNTING PLATE	MS	-
12	-	1	GEARBOX	-	-
11	-	1	MOTOR	-	-
10	-	1	SHAFT KEY	KEY ST	-
9	-	6	GLAND PACKING	PTFE	1/4" SQ
8	-	2	BEARING	-	-
7	-	1	BEARING RETAINER	AL	-
6	-	2	GLAND FOLLOWER	AL	-
5	-	2	END COVER	CI	-
4	-	1	BODY	CI	-
3	-	-	ROTOR LOCATING HARDWARE	NOT	SHOWN
2	-	8	ROTOR TIP	MS	-
1	-	1	CLOSED ADJUSTABLE ROTOR	MS	-



Sunco Powder Systems, Inc.
 1685 ROCK HILL HIGHWAY - LANCASTER, SC 29720
 Phone: 704-545-3922 Fax: 704-545-8345
www.suncopowder.com

TITLE: ROTARY VALVE - EXP PARTS VIEW

DATE: 07/01/17
 DRAWN BY: [blank]
 DRAWING NO: 17-0101-RV-EXP