

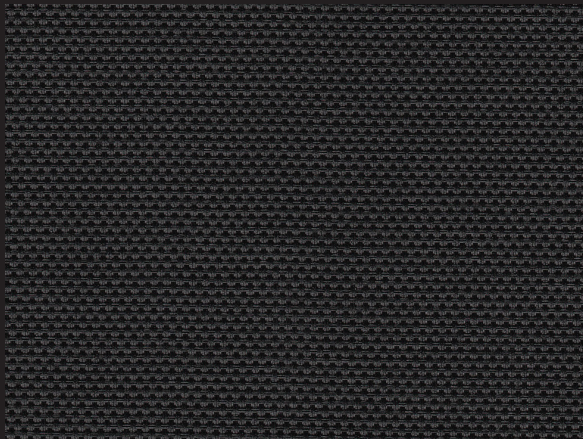
E Screen™ | WITH **KOOLBLACK®** TECHNOLOGY

High Performance | 1% 3% 5% openness



1%

035035 | Charcoal/Charcoal



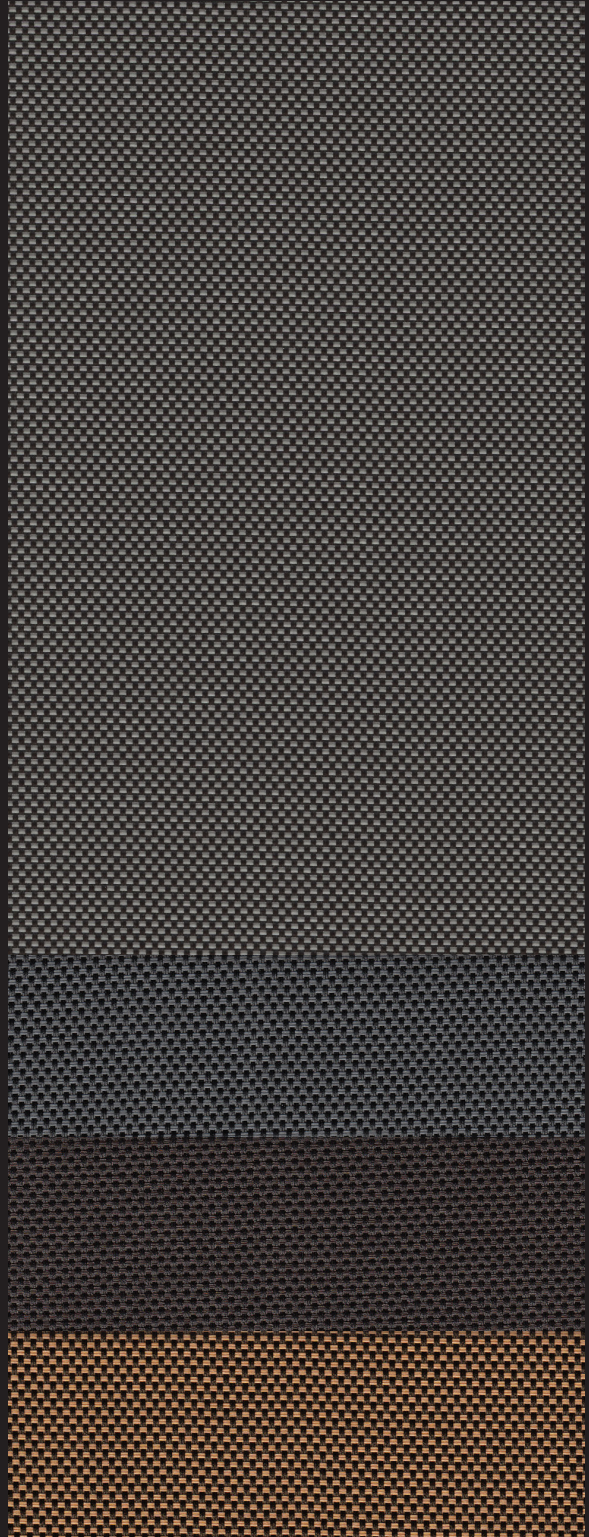
3%

035035 | Charcoal/Charcoal



5%

035035 | Charcoal/Charcoal



00K122
Charcoal/
Grey-Stone

035131
Charcoal/
Grey

035032
Charcoal/
Cocoa

035071
Charcoal/
Apricot

Fabrics sampled on waterfall are 5% openness.

Specifications

Item Number
Openness Factor
Composition
UV Blockage
Standard Packaging
Width
Weight
Thickness

1% 007701 | **3%** 007703 | **5%** 007705
1%, 3% & 5%
36% Fiberglass | 64% Vinyl
Approximately 95%-99%
Rolls of 30 ly (27 lm)
98 in (250 cm), 122 in (310 cm)
1% 12.95 oz/yd² (439 g/m²) ±5% | **3%** 11.3 oz/yd² (382 g/m²) ±5% | **5%** 10.6 oz/yd² (358 g/m²) ±5%
1% 0.021 in (0.53 mm) ±5% | **3%** 0.020 in (0.51 mm) ±5% | **5%** 0.019 in (0.47 mm) ±5%

Classifications

Fire Classifications
Bacterial & Fungal Resistance
Environment
Acoustical Performance

NFPA 701-19 TM#1, California U.S. Title 19, CAN/ULC-S109-14 Small & Large Flame Test
ASTM E2180, ASTM G21
RoHS - Lead Free, GREENGUARD Gold
1% NRC: 0.45, SAA: 0.46 | **3%** NRC: 0.15, SAA: 0.17 | **5%** NRC: 0.10, SAA: 0.12

E Screen™ WITH **KOOLBLACK®** TECHNOLOGY

ITEM COLOR

035035 Charcoal/Charcoal

00K122 Charcoal/Grey-Stone

035131 Charcoal/Grey

035032 Charcoal/Cocoa

035071 Charcoal/Apricot

FABRIC

FABRIC + GLASS

FABRIC															FABRIC + GLASS								
Rs IR %			Rs %			thermal Total Solar As %			Ts %			optical Rv %			Tv %			commercial SHGC % Improvement					
1	3	5	1	3	5	1	3	5	1	3	5	1	3	5	1	3	5	1	3	5			
64	61	60	35	34	33	53	49	49	12	17	18	9	10	10	2	6	6	18	16	16			
63	60	58	38	38	36	50	46	45	12	16	19	17	19	18	3	7	9	24	24	21			
67	65	62	40	40	38	49	46	45	11	14	17	16	18	17	2	5	7	24	24	21			
64	61	57	36	35	32	52	48	49	12	17	19	11	12	11	2	6	7	21	16	16			
62	58	59	39	38	37	47	44	42	14	18	21	19	22	19	3	6	9	24	21	18			

Warranty

Disinfecting & Cleaning

5 Year Exterior & 10 Year Interior

Remove dust with a soft duster, cloth, sponge or low-suction vacuum. For minor stains clean with a mild dish detergent and lukewarm water using a soft brush, cloth or sponge. For tougher stains and disinfecting instructions visit MermetUSA.com.

Mermet Corporation
5970 N. Main Street | Cowpens, SC 29330
Ph 1.866.902.9647 | info@MermetUSA.com

MermetUSA.com



Scan here for complete fabric resources.