

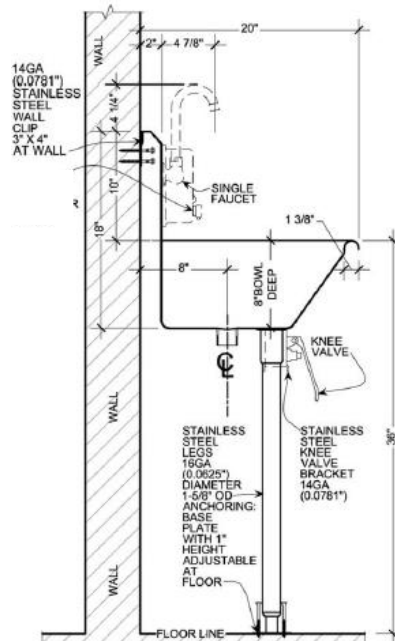
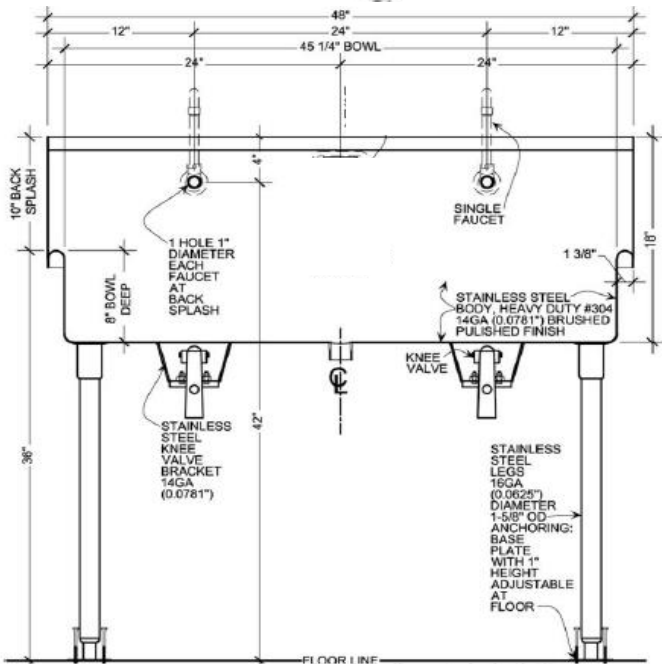
Wicketts Stainless

SPECIFICATION

Commercial Sink Heavy Duty
Wash Up Sink



Hot & Cold



Model Number	A	B	C	D	F
WWT-4820-K-LF	48	20	45	8	10

Engineering Specification:

14 gauge, type 304 stainless steel wash sink. 1 3/8" rolled rims. 1 1/2" welded in drain. Exposed surfaces polished to a satin finish. Supported on (2) tubular legs and clips.

Wicketts Stainless, LLC.
2279 Eagle Glen Pkwy. 112-209
Corona, CA 92883
Tel: 951-256-1916
Fax: 951-638-9059
Sales@wickettsstainless.com

M-080136



Approved for Manufacturing
Company: _____
Signature: _____
Print: _____ Date: / /