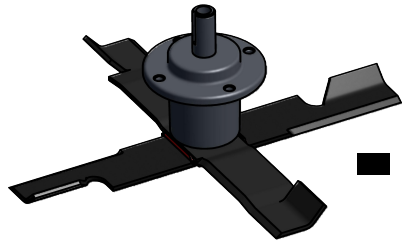


COMMERCIAL MOWER ATTACHMENT SERIES

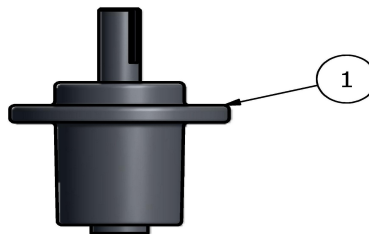


-BLADE Dual Mulching Blade Adapters

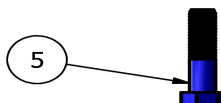
X-Blade Dual Mulching Blade Adapters are designed to hold your original blade and an additional mulching blade (not included) at a perfect 90 degree angle. Your original blade (lower) will give the clean height of cut, and the mulching blade (above), with multiple cutting edges, pulverizes the cut grass as it cycles through the deck chamber and this will dramatically reduce the size of the grass clippings.

X-Blade Dual Mulching Blade Adapters fit all standard commercial mower blades that are 2 1/2" wide, 3/16" thick and have a 5/8" center hole.

X-BLADE DUAL MULCHING BLADE ADAPTER
Part 3



- 1) SPINDLE (NOT INCLUDED)
- 2) MULCHING BLADE (NOT INCLUDED)
- 3) X-BLADE DUAL MULCHING
BLADE ADAPTER
- 4) REGULAR BLADE (NOT INCLUDED)
- 5) 5/8-11 HEX BOLT (NOT INCLUDED)



AVAILABLE NOW AT A D'TTACHTM DEALER NEAR YOU

For more information, call 631-566-6085 or visit dttach.com

Follow Us @dttachmfg

