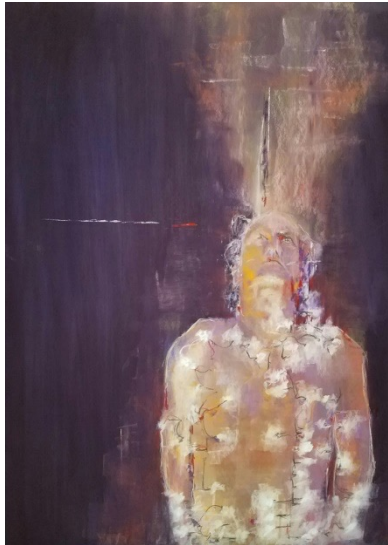


“Spread the Word” by Roberta Condon January 2017
Volume 2, Issue 1

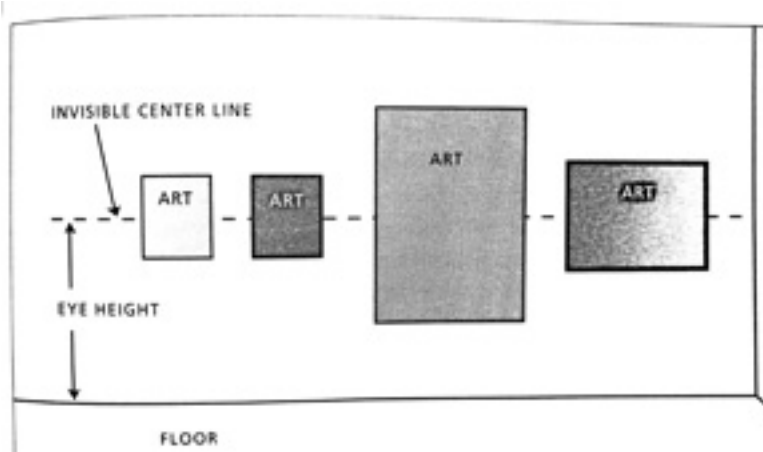


Tip 1. North Central College is seeking applications for solo/group exhibits for the 2017-2018 season. Schoenherr Gallery has 1100 sq. ft., Oesterle Library Gallery has 121 feet of running wall space. Honorarium available, 20% commission. Send 20 images, resume, artist statement, image list and SASE to Nickole Lanham, Gallery Director, North Central College, 30 North, Naperville, IL 60540 postmarked by January 18. Allow 6 to 8 weeks for review. <http://finearts.northcentralcollege.edu/art-exhibits>

Tip 2. 5th Annual International Chicago Area Exhibition is seeking art of all kinds to exhibit in a large open space for Aug/Sept show. Visitors 6000 plus. Thanks to event sponsorship, no fee to submit and no commission. See website J + K Isaacson <http://www.xculturearts.com>

Tip 3. Registration is now open for the IAPS Twelfth Biennial Convention in Albuquerque, NM. www.iapspastel.org

Tip 4. When hanging a show, be sure all paintings are aligned with the center at eye level:



Tip 5. Aerial or atmospheric perspective states that as objects recede they appear lighter, grayer, less saturated with color, smaller and with less detail than objects at a closer distance. Here's the quirk: clouds show the reverse of land's atmospheric perspective. Clouds in the distance appear warmer, and more rosy, not cooler as the ground receding appears. A tip from Lee McVey.

Have a great month painting! Have a great New Year! And don't forget to send me your items of interest so we can all SPREAD THE WORD !

Roberta Condon