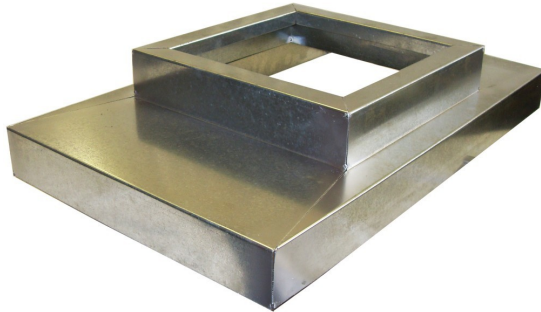




ROOF CURB ADAPTER

MODELS:
LS-CA (STEEL)
LA-CA (ALUMINUM)



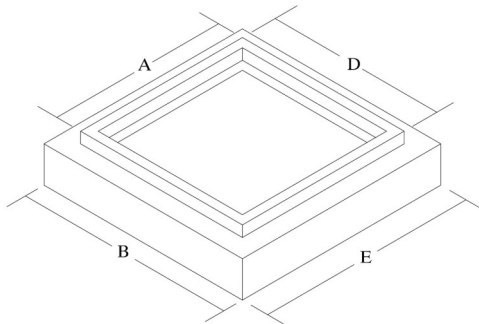
APPLICATION

The LS-CA/LA-CA is Lloyd's roof curb adapter. The extended base models mount between the fan and roof curb. LS-CA model consists of 16 gage galvanized steel. LA-CA model consists of 0.063 thick aluminum alloy 3003-H14. Roof curb adapters mount between the fan and the roof curb and provide an additional 6 inches (152 mm) of height.

STANDARD CONSTRUCTION

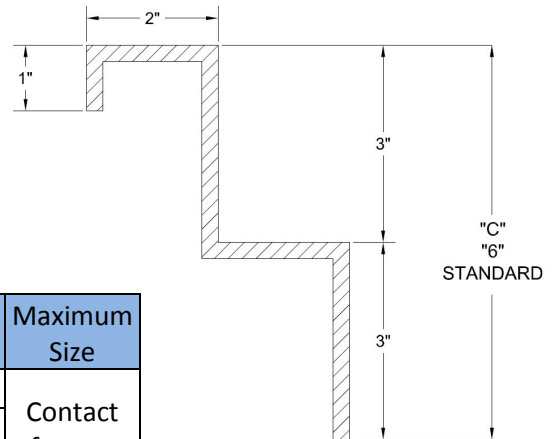
Fabricated using 16 gage galvanized steel
3 inch rise and 3inch land area
Mill finish is standard

Note: use "D" & "E" dim's for rectangular Curbs



Side	Minimum Size	Maximum Size
A	6"	Contact factory
B	6"	
C	5"	

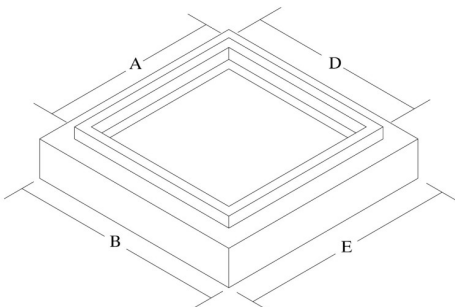
LS-CA STEEL CURB ADAPTER



STANDARD CONSTRUCTION

Fabricated using 0.063 thick aluminum alloy 3003-H14
3 inch rise and 3inch land area
Mill finish is standard

Note: use "D" & "E" dim's for rectangular Curbs



Side	Minimum Size	Maximum Size
A	6"	Contact factory
B	6"	
C	5"	

LA-CA ALUMINUM CURB ADAPTER

