

C.L. SMITH INDUSTRIAL COMPANY

Advanced Abrasive Wear Solutions



800.764.0080

www.clsmithindustrial.com



35
years
Established
1977

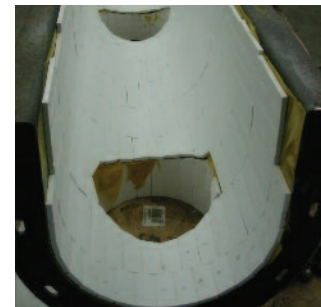
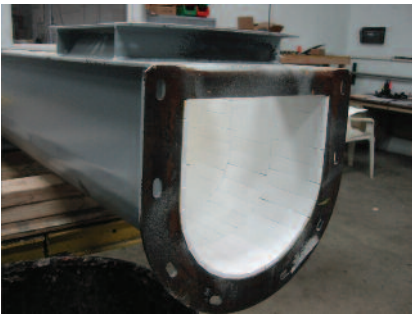


FABRICATED COMPONENTS

CHUTES / HOPPERS



SCREWS / TROUGHS



PATENTED BURNER NOZZLE LININGS



U.S. Patent # 8,210,111 B2

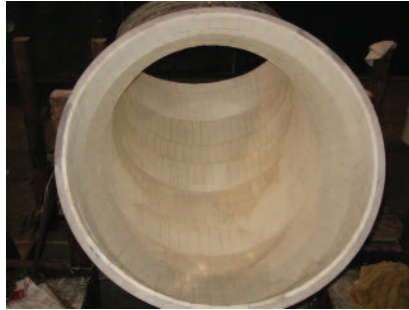


C.L. Smith Industrial Company
2972 Arnold Tenbrook Road • Arnold, MO 63010 USA
636.296.1036 • Fax 636.296.0944 • 800.764.0080
www.clsmithindustrial.com

FABRICATED COMPONENTS



ELBOWS / PIPING



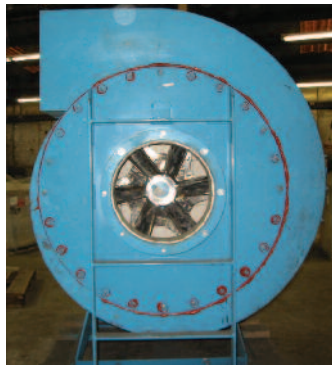
EXHAUSTER FANS Dynamic Balancing Available



Before



After



CONES / CYCLONES



C.L. Smith Industrial Company
2972 Arnold Tenbrook Road • Arnold, MO 63010 USA
636.296.1036 • Fax 636.296.0944 • 800.764.0080
www.clsmithindustrial.com





MATERIALS

ALUMINA CERAMICS



ISO-PRESS



STANDARD TILE



COLORED TILES

SILICON CARBIDES



ADHESIVES



Maximum Operating Temperature 200°



Maximum Operating Temperature 350°



Max Temperature Range
White - up to 500°F
Red - up to 650°F

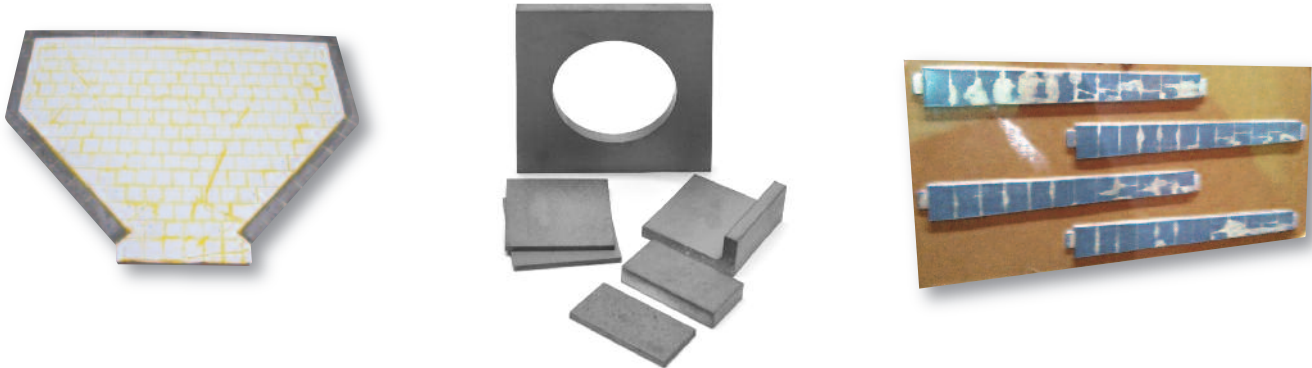


C.L. Smith Industrial Company
2972 Arnold Tenbrook Road • Arnold, MO 63010 USA
636.296.1036 • Fax 636.296.0944 • 800.764.0080
www.clsmithindustrial.com

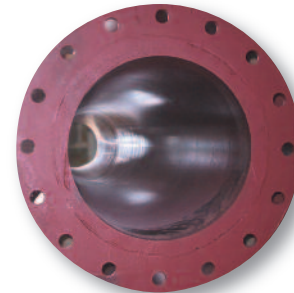
MATERIALS



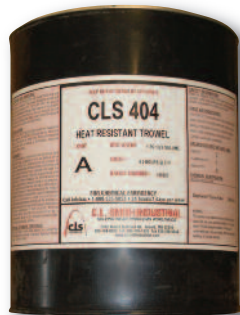
TUNGSTEN CARBIDES



BASALT / SPUNCAST CERAMIC LINING



TROWELABLE WEAR COMPOUND



Maximum Operating
Temperature 400°



Maximum Operating
Temperature 200°

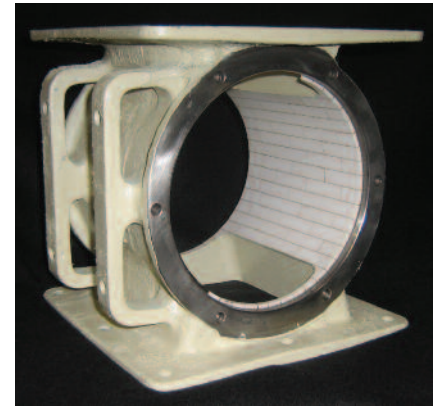
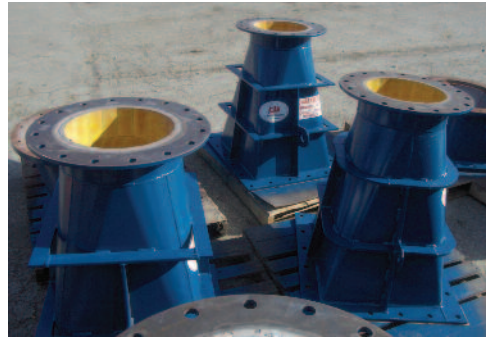
C.L. Smith Industrial Company
2972 Arnold Tenbrook Road • Arnold, MO 63010 USA
636.296.1036 • Fax 636.296.0944 • 800.764.0080
www.csmithindustrial.com





SERVICES

VACUUM BONDING



BRAZING / TUNGSTEN CARBIDE



ENGINEERING SERVICES



- Field Measure
- Hanger Studies
- Product Design
- Onsite Representation



C.L. Smith Industrial Company
2972 Arnold Tenbrook Road • Arnold, MO 63010 USA
636.296.1036 • Fax 636.296.0944 • 800.764.0080
www.clsmithindustrial.com

SERVICES



FIELD INSTALLATIONS



OSHA / MSHA
Certified Field Installers

SHOP FABRICATION AND INSTALLATION



RECONDITIONING SERVICES



C.L. Smith Industrial Company
2972 Arnold Tenbrook Road • Arnold, MO 63010 USA
636.296.1036 • Fax 636.296.0944 • 800.764.0080
www.clsmithindustrial.com





COMPANY HISTORY

C.L. Smith Industrial Company, a family owned business, is headquartered in St. Louis, Missouri. We specialize in solving abrasive wear problems for the coal fired power industry, mining industry, steel industry, cement industry, grain industry, pulp and paper industry and asphalt industry. For over thirty years, our fine reputation has been built on quality, service and customer satisfaction.

C.L. Smith Industrial Company provides service and materials to improve the reliability and service life of equipment and systems which are subjected to wear damage caused by abrasion or corrosion.

Our materials include high density plain and weldable alumina ceramic from 1/8" to 2" thick, vacuum bonded ceramic, ISO pressed ceramic cylinders, silicon carbide nitride bonded, silicon carbide reaction bonded, tungsten carbide, RTV silicone, epoxy adhesives, trowelable wear compounds and basalt linings.

These materials can be shop or field installed in assemblies you provide to us or fabricated in our shop to your specifications and requirements. Most of these products are available for installation by you; however, some applications may require that we install the products in order to insure they will provide the service life you will require.

C.L. Smith Industrial Company has **ceramic lined classifier cones, fuel piping elbows, fan assemblies, fan blades, pulverizers, mill walls, cyclones, chutes, hoppers, bottom ash piping, burner nozzles, ash paddles, screw conveyors, transitions, asphalt silos and batch cones, just to name a few.**

Our staff includes a sales force covering the United States and Canada, engineers equipped with CAD, AWS and ASME certified welders and a team of experienced ceramic installers. If you have any questions or wish to learn more about our products and services, please call our office.

CERAMICS:

Plain Ceramic

PL 1 x 4 x 1/8"
PL 4 x 4 x 1/8"
PL 4 x 6 x 1/8"
PL 1 x 4 x 1/4"
PL 4 x 4 x 1/4"
PL 4 x 6 x 1/4"
PL 2 x 6 x 1/2"
PL 4 x 6 x 1/2"
PL 2 x 6 x 1"
PL 4 x 6 x 1"

Weldable Ceramic

WS 2 x 6 x 1/2"
WS 4 x 3 x 1/2"
WS 4 x 6 x 1/2"
WS 2 x 6 x 1"
WS 4 x 3 x 1"
WS 4 x 6 x 1"

Hex Mesh

6 x 6 x 1/8"
6 x 6 x 1/4"
6 x 6 x 1/2"
6 x 6 x 3/8"

ADHESIVES

CLS-111 White RTV Silicone
CLS-444 High-Temp Red RTV Silicone
CLS-773 Regular Set Epoxy
CLS-70-4 Fast Set Epoxy
CLS-63 Heat Resistant Epoxy
CLS-101 Fast Set Wear Compound
CLS-202 Regular Set Wear Compound
CLS-404 Heat Resistant Wear Compound



C.L. Smith Industrial Company
2972 Arnold Tenbrook Road • Arnold, MO 63010 USA
636.296.1036 • Fax 636.296.0944 • 800.764.0080
www.clsmithindustrial.com