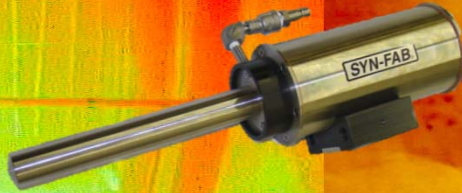


HOT SHEET

SF12MP HIGH TEMPERATURE IMAGING SYSTEM



SYN-FAB® SF12MP • THE MOST ADVANCED INFRARED IMAGING SYSTEM

The **SYN-FAB®** SF12MP series imaging system represents the state-of-the-art in high temperature process monitoring. Each system utilizes a high-tech combination of electronics, optics and protection to produce high quality, reliable video and temperature data of your process. The SF12MP's wavelength optimized infrared optical system is designed to see through the smoke, ash and haze produced within even the most volatile boilers and furnaces.

SF12MP - SYSTEM FEATURES

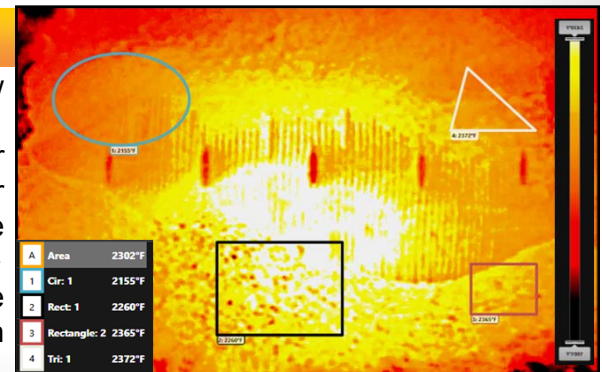
► Quick-change system design for easy installation and maintenance ► Proprietary **Bright Image Optical System** for sharp images ► Modular configuration for easy option add-ons and upgrades ► Compact, easy to handle design ► Indestructible **STEELON™** housings to protect electronic components ► Advanced lens design for low air consumption, wider field of view and easy assembly/disassembly ► High performance, ruggedized imagers for increased durability ► Loaner systems and 24 hour service for emergencies

SF12MP - SYSTEM OPTIONS

► Radiometric camera with **Pyro-Viper™-HD** image processing and analysis software for temperature measurement, image processing and data management ► Balanced draft and positive pressure wall boxes for permanent/semi-permanent installation ► Lens lengths available from 12" to 65" with straight ahead, right angle or 45° obtuse line of sight ► Automatic retract assemblies ► Portable system configuration and cart assembly for diagnostics and testing ► Air filtration systems ► Digital recorders, monitors, switchers and other video equipment ► Fiber optic, coax, Ethernet, or wireless video/data transmission ► Custom options for special needs

SF12MP - BENEFITS TO OPERATORS

► Helps maximize efficiency and capacity by showing fuel and air flow in the burning zone ► Reduced emissions by improving performance ► Increased safety margins by helping detect tube leaks and other problems before major damage occurs ► Helps reduce slag, clinker and ash build-up resulting in fewer shutdowns and lower maintenance cost ► Aiding start-ups and troubleshooting burner malfunctions ► Helps in shaping and positioning fuel beds ► Provides temperature data and thermal profile of fuel bed and wall tubes when used with **Pyro-Viper™-HD** software



Pyro-Viper™-HD SOFTWARE DISPLAY

SYN-FAB® INC.

HIGH TEMPERATURE & INDUSTRIAL PROCESS MONITORING SYSTEMS

7863 Schillinger Park Road • Mobile, Alabama • 36608 • USA
Phone +1 251-633-4942 • Fax +1 251-633-2514



www.synfab.com

