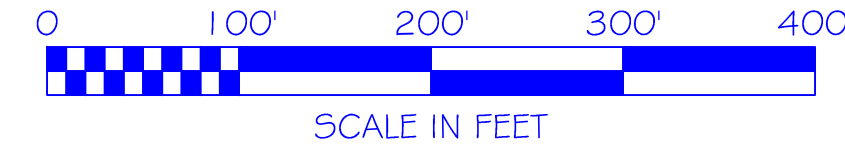
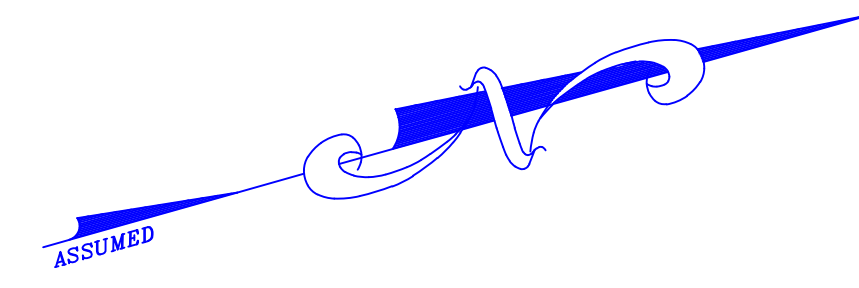
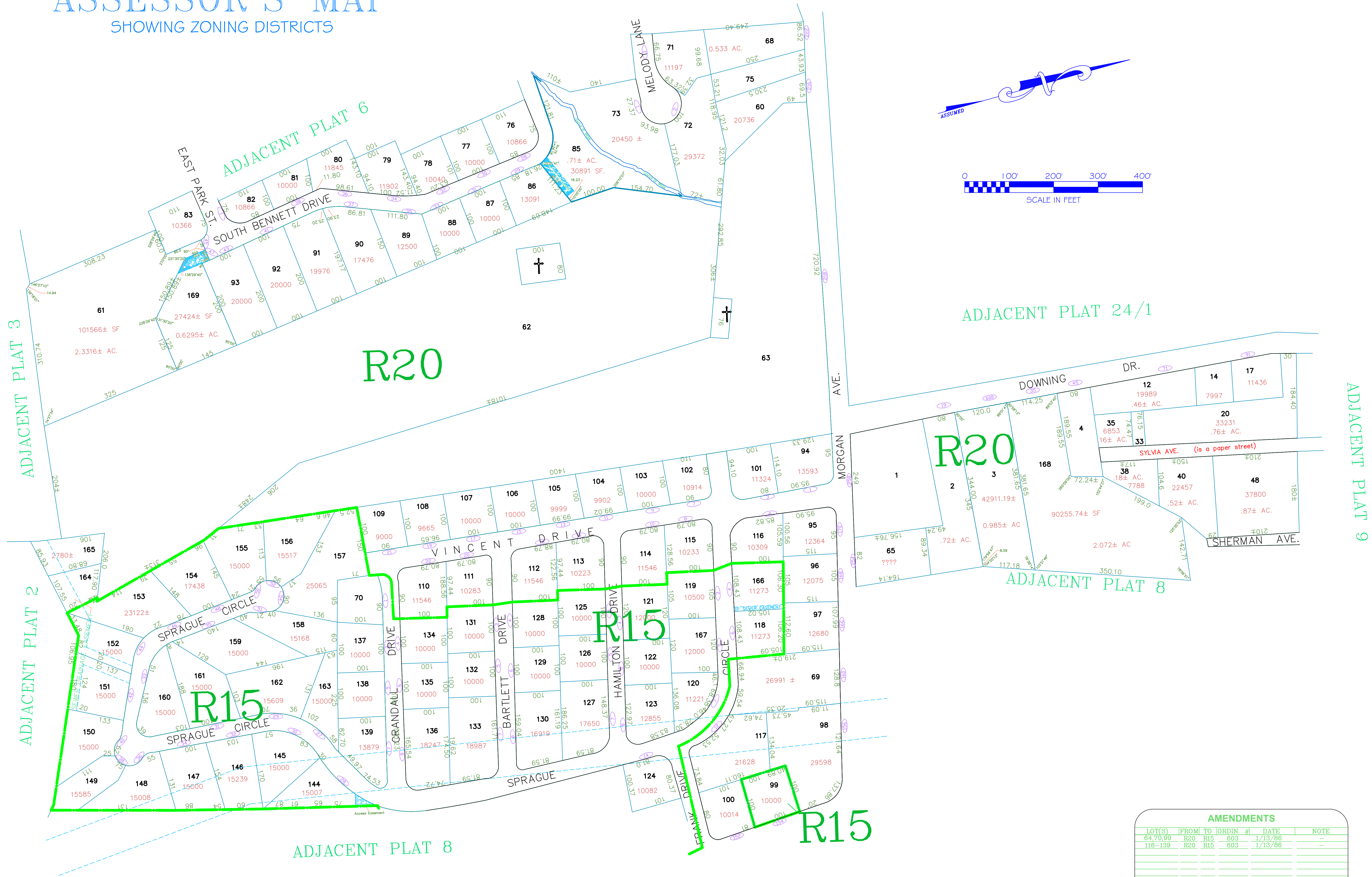


# ASSESSOR'S MAP

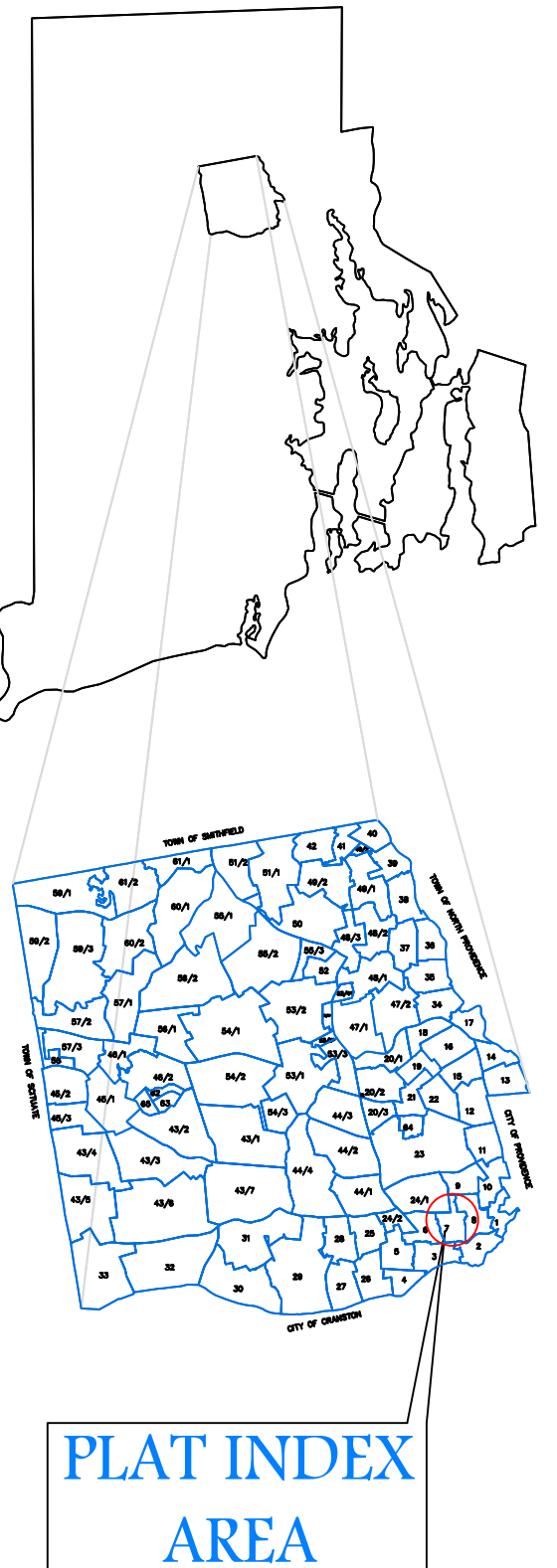
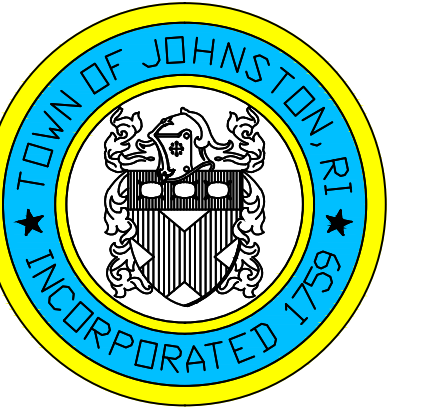
SHOWING ZONING DISTRICTS



Assessor's Plat Number

# 7

STATE OF RHODE ISLAND  
 TOWN OF JOHNSTON  
 PROVIDENCE COUNTY  
 INCORPORATED 1759  
 ASSESSOR'S OFFICE  
 1385 HARTFORD AVENUE  
 JOHNSTON, RHODE ISLAND  
 02919



ADJACENT PLAT 9

ADJACENT PLAT 3

ADJACENT PLAT 2

ADJACENT PLAT 6

ADJACENT PLAT 24/1

ADJACENT PLAT 8

ADJACENT PLAT 8

AMENDMENTS					
LOT(S)	FROM	TO	ORDIN. #	DATE	NOTE
64,70,99	R20	R15	603	1/13/86	-
118-139	R20	R15	603	1/13/86	-

Scale: 1:100  
 Revised By: Benjamin Ng  
 Last updated: January 04, 2016  
 Date printed: January 04, 2016

For copies of plat maps, please go to the DPW at 100 Irons Avenue Johnston Rhode Island. Thank you.

NOTE: This map was prepared for the use of the Town of Johnston for assessment and illustrative purposes only. It does not represent a survey of the premises. No liability is assumed as to the sufficiency or accuracy of the data delineated hereon.