

Rabbit Anti-ALK/p80 [EP302]: RM0350, RM0350RTU7

Intended Use: For Research Use Only

Description: Recognizes a human p80 protein, identified as a hybrid of the anaplastic lymphoma kinase (ALK) gene and the nucleophosmin (NPM) gene resulting from the t(2;5)(p23;q35) translocation found in 30-50% of CD30+ large cell lymphomas. This rabbit polyclonal antibody can be used to detect p80 in these lymphomas and may also be used to detect a recently described subtype of large B cell lymphoma, which expresses the full length ALK protein.

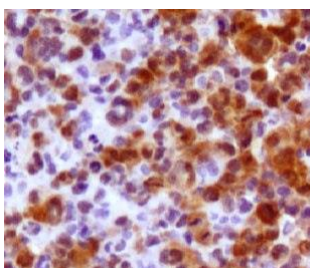
Specifications

Clone: EP302
Source: Rabbit
Isotype: IgG
Reactivity: Human
Localization: Cytoplasm, nucleus
Formulation: Antibody in PBS pH7.5, containing BSA and $\leq 0.09\%$ sodium azide (NaN₃)
Storage: Store at 2°- 8°C
Applications: IHC
Package:

Description	Catalog No.	Size
ALK/p80 Concentrated	RM0350	1 ml
ALK/p80 Prediluted	RM0350RTU7	7 ml

IHC Procedure

Positive Control: Anaplastic large cell lymphoma
Concentrated Dilution: 50-200
Pretreatment: Citrate pH6.0 or EDTA pH8.0, 15 minutes using Pressure Cooker, or 30-60 minutes using water bath at 95°-99°C
Incubation Time and Temp: 30-60 minutes @ RT
Detection: Refer to the detection system manual
* Result should be confirmed by an established diagnostic procedure.



FFPE human anaplastic large cell lymphoma stained with anti-ALK using DAB

References:

1. ALK-positive anaplastic large cell lymphoma with an unusual alveolar growth pattern. Yu G, et al. Int J Clin Exp Pathol. Dec 1;7(12):9086-9, 2014.
2. Detection of ALK protein expression in lung squamous cell carcinomas by immunohistochemistry. Wang J, et al. J Exp Clin Cancer Res. Dec 21;33:109, 2014.
3. Recent advances of immunohistochemistry for diagnosis of renal tumors. Kuroda N, et al. Pathol Int. Aug;63(8):381-90, 2013.
4. Renal cell carcinoma with novel VCL-ALK fusion: new representative of ALK-associated tumor spectrum. Debelenko LV, et al. Mod Pathol. Mar;24(3):430-42, 2011.
5. High expression of Mcl-1 in ALK positive and negative anaplastic large cell lymphoma. Rust R, et al. J Clin Pathol. May; 58(5):520-4, 2005.

Doc. 100-RM0350
Rev. A