

- Gradually press out the bearing with the special tool by using the hand-press.

CAUTION

The removed bearings must be replaced with new ones.

NOTE:

Using the hand-press is recommended to remove the crankshaft journal bearings. However, the crankshaft journal bearings can be removed by using with the following special tools.

- TOOL 09924-84510: Bearing installer set**
- 09910-20116: Conrod holder**
- 09913-60221: Journal bearing remover/installer**

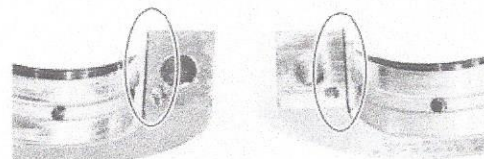
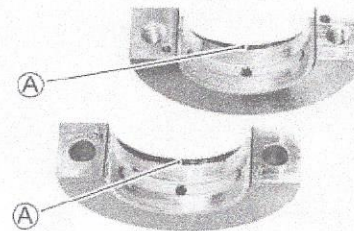
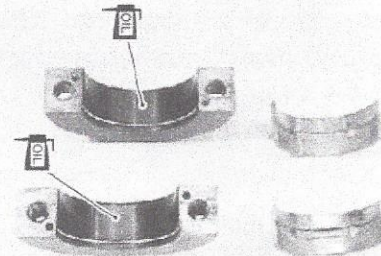
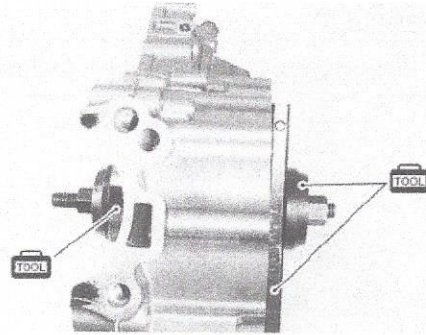
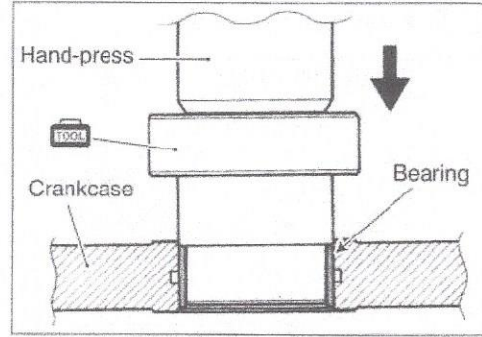
- Set the specified crankshaft journal bearings to the special tool.

CAUTION


- * Before setting the bearing, apply enough engine oil to the special tool and bearings.
- * When setting the bearing, align the bearing side with the engraved line **A** and also the bearing end with the mating surface of the special tool.

NOTE:

The upper and lower bearings are same.

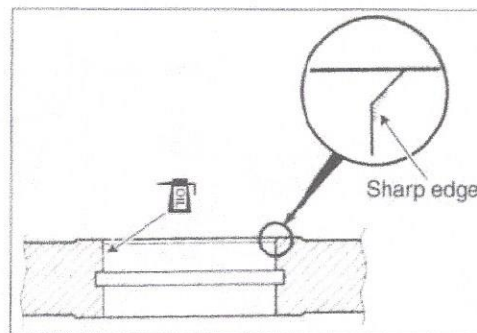
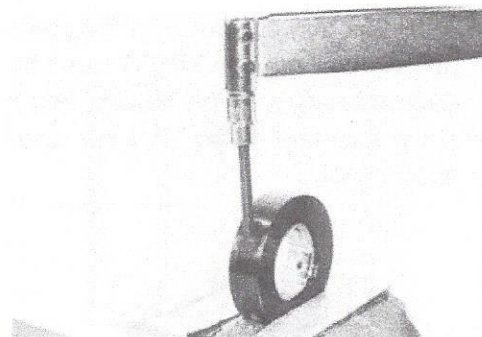


- Tighten the special tool bolts to the specified torque.

 Special tool bolt: 23 N·m (2.3 kgf-m, 16.5 lb-ft)

CAUTION

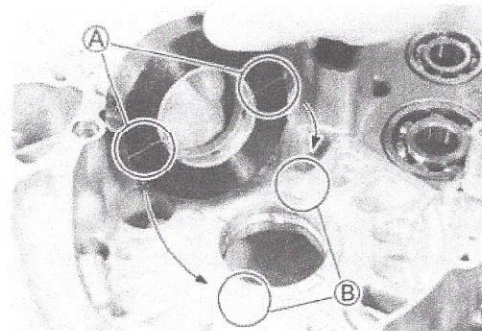
Before installing the bearings, lightly shave off the sharp edge part of the crankcase chamfer by using an oilstone and wash the crankcase bore with enough engine oil.



- Set the bearings installed in the special tool to the crankcase half as shown.

CAUTION

- * Be sure the bearing protruded side **A** faces the crankcase bore.
- * Align the bearing/special tool mating surface with the line **B** on the crankcase.



NOTE:

Install the bearing from inside to outside of each crankcase halves.