

# PANGBOURNE MAGAZINE

ISSUE 162

MAY/JUNE 2021





# BEN HEATH

— BEAUTIFUL INTERIORS —



**Kitchens • Living Rooms  
Dining Rooms • Bedrooms • Bathrooms  
Curtains and Blinds • Flooring • Fabrics • Lighting**

**LOCALLY MADE IN NEWBURY**

**Raceview House, Hambridge Road, Newbury, RG14 5SA**

**T: 01635 523123 E: [sales@benheath.com](mailto:sales@benheath.com)**

---

## CONTENTS

Local News .....	4
Crossword .....	9
Church News .....	10
Local Clubs .....	17
Pangbourne Valley Playgroup .....	28
Pangbourne Primary School .....	29
Pangbourne College .....	31
Pangbourne Place-Names .....	34
Environmental News .....	38
Council News .....	44
Useful Numbers .....	50
Classified Ads .....	51

### THE PANGBOURNE MAGAZINE

Production/Advertising/Finance:  
**Herald Graphics – 0118 9311488**

Submission of articles\* and adverts:  
**[pangbourne@heraldgraphics.co.uk](mailto:pangbourne@heraldgraphics.co.uk)**  
*(\*receipt of an article is not a guarantee of inclusion)*

Deadline for inclusion in the  
July/August Magazine:

**Friday, 9th June 2021**



*(for distribution at the end of the month)*

Distribution: Lucy Bromage – 07747 056193

Whilst every effort is made to ensure the accuracy of information printed in the Pangbourne Magazine, the Editor and publishers cannot accept any responsibility for the consequences of any errors that may occur. The opinions expressed in this magazine are those of the contributors and are not necessarily those of the Editor or of the Committee. Articles in the Pangbourne Magazine, or the information contained in them, may not be used or reproduced by other publications without the express permission of the Magazine Committee. Whilst care is taken to establish that our advertisers are bona fide, readers are advised to take precautions before entering into any agreement.

Front cover picture supplied by:  
Ian Crimp

IF YOU WOULD LIKE TO SUBMIT A PHOTOGRAPH FOR THE PANGBOURNE MAGAZINE  
FRONT COVER, PLEASE SEND TO [PANGBOURNE@HERALDGRAPHICS.CO.UK](mailto:PANGBOURNE@HERALDGRAPHICS.CO.UK) FOR CONSIDERATION.  
YOUR IMAGE WOULD NEED TO BE HIGH RESOLUTION AND CONTENT SHOULD BE OF LOCAL INTEREST.



**Online  
Dementia  
Café**

Second Wednesday of each month

To book, email  
Victoria.Rowland@AgeUKBerkshire.org.uk  
or  
Janet.Dillon@AgeUKBerkshire.org.uk  
Tel: 0118 959 4242

## PANGBOURNE VILLAGE MARKET

We were hoping to reopen on the last Friday of April outside at the village hall but there is a problem. The village hall suffered a burst pipe in the middle of February and suffered damage. The hall has to be dried out before remedial work can start. Then the workmen will need the car park during the day and the area will be busy.

We are very disappointed not to be able to open. We will monitor the situation and reopen as soon as we are given the go ahead by the village hall. We all need to return to a more normal way of life now most of us have been vaccinated. We will advertise in the village as soon as we have a date. We look forward to welcoming you all back in the not too distant future.

## DEMENTIA WEBSITE

The link below is a brand new website to help people living with dementia, it is regularly up dated and contains lots of information, relevant information.

<https://dementiafriendlywestberkshire.co.uk/>

## UNWANTED LAPTOPS?

Maybe you have a laptop that is surplus to your requirements and are wondering if anyone else could use it. Goran Lennartsson certainly could. He is a mathematics teacher and Eco- schools Coordinator at the Oratory School. Recently he has been restoring and adapting unwanted laptops for use in schools in deprived areas. The hard drives are wiped, data overwritten and not accessible anymore and made in to Simple Chromebooks using the Operating System

Cloudready. The schools concerned

have been delighted because the effect is immediate and practical.

The scheme can be extended if more laptops are forthcoming.

A laptop with Windows 7 or better, installed when

they were bought is necessary. Older

laptops are probably not able to be restored and are therefore not suitable. If you think you can help will you please contact Judith Colegate at [courtlandshill@googlemail.com](mailto:courtlandshill@googlemail.com).

You can read about the impact the laptops had at St Anne's School in Caversham by going to the link here:

<https://www.henleystandard.co.uk/news/caversham/159860/pupils-love-learning-again-thanks-to-donated-laptops.html>



## Dementia Walks West Berkshire

22nd April • 20th May • 17th June  
Meet at 10 a.m.

For venue information and to book, email  
[victoria.rowland@ageukberkshire.org.uk](mailto:victoria.rowland@ageukberkshire.org.uk)





## GLIMPSES OF WAR Volume 1

COVID INSPIRED BOOK FOR MILITARY CHARITY  
LAUNCHES ON 8TH MAY 2021

Pangbourne residents will be well familiar with the Falklands Chapel at Pangbourne College. In a new book, *Glimpses of War*, published by the British Modern Military History Society, Major-General Dair Farrar-Hockley describes the battle for Darwin in the Falklands War, including the difficulties faced when having to fight in daylight instead of under cover of darkness.

The book, which contains recollections of war from many different conflicts by those caught up in them, will be launched through Amazon on the anniversary of VE Day, 8 May. Proceeds from the book will go to the military charity Blind Veterans UK (formerly St Dunstan's).



For more details contact:

Andy Cockeram, Chairman BMMHS

andy.cockeram@bmmhs.org mobile 07977 289335 website: [www.bmmhs.org](http://www.bmmhs.org)



## JIBBER-JABBER . . . IT'S GOOD TO TALK

May June be good for you as hopefully things return to somewhat sort of normality and the weather is brighter and the days stay lighter longer. Jibber-jabbering around the village over the last few months has been interesting with people sharing their vaccine jab experiences and which vaccine they had and subsequent (if any) reactions to it.

Fans of the 80s classic show *The A-Team* will remember Mr Ts instructions to "Quit your Jibber-Jabber". He may have had a point BUT communication is SO SO important to negate the epidemic of Loneliness.

Social isolation is associated with about 50% increased risk of dementia.

Poor social relationships (characterised by social isolation or loneliness) is associated with a 29% increased risk of heart disease and a 32% increased risk of stroke.

Post lockdown as during the lockdowns, it is advisable to have purposes and hobbies. As well as log fishing, Ginny and myself have been attracted to the unusual hobby of magnet fishing. It has been a joy to fish and jibber-jabber with our good friend Lorraine usually by Thimble Mill where the 'Blessed' River Pang runs into Old Father Thames. As yet we have fished out nothing of immense value but have enough nails to open up a hardware store.

It has been therapeutic to Jibber-Jabber with people walking by and their top comments are:

1. what are you doing
2. found anything good
3. any bodies?!!

The law of attraction with magnet fishing is reel ? and the minds ability to manifest is well documented as Shakespeare wrote "And as imagination bodies forth the form of things unknown, the poet's pen turns them to shapes and gives to airy nothing a local habitation and a name. Such tricks hath strong imagination, that if it would but apprehend some joy, it comprehends some bringer of that joy; or in the night, imagining some fear, how easy is a bush supposed a bear!"

Some might say (we will find a brighter day) Shakespeare is Jibber-Jabbering and some might say (In need of education in the rain) and it could all just be an Oasis.

If you need to attract more good things in your life or change things that Maybe (definitely) are not so good . . . Hypnosis can sort it . . . please Call 0788 187 85 45 and book a consultation @ my consulting room in the heart of Reading (1 minute walk from train station).

Keep Safe . . .

**Jim Tubbs-Galley**

(Hypnotherapist, NLP Master,  
Reiki Master and Tree Hugger)



RESOLUTIONS - TRY HYPNOSIS » » » WORK - TRY HYPNOSIS » » » REST - TRY

AS FEATURED IN OK! MAGAZINE, SUNDAY EXPRESS MAGAZINE  
AND THE SUNDAY PEOPLE SUPPLEMENT.

# TranszzzzFormations

*Be free of old habits and  
insecurities with hypnotherapy*



Addiction • OCD  
Stress • Anxiety and Fear  
Depression • Shyness  
Public Speaking  
Self-Esteem and Confidence  
Sleeping Problems  
Stop Smoking • Weight Loss

Jim trained at the highly respected RBCCH (Royal Berkshire College of Clinical Hypnosis) and in 1993 trained at UK London College of Clinical Hypnosis, so you can rest assured of many years experience. Drawing from the fields of Hypnotherapy, Cognitive Behaviour Therapy (CBT) and Neuro Linguistic Programming (NLP). Jim uses the most effective techniques from clinical practice to enable you to develop an enhanced and sustainable sense of well being, control and happiness.

Everyday debilitation fears and phobias cause unnecessary distress for thousands of people. Feel better about yourself. Hypnosis will help you retrain your mind so you'll feel much more confident in future situations.

Evenings, late nights and  
weekend visits available

**07881 878 545**

Based in Reading town centre

**[www.transzzzzformations.co.uk](http://www.transzzzzformations.co.uk)**

The Old Forge, 8 Merchants Place, RG1 1DT

Corporate and business  
group sessions – hypno  
boost your workforce!



WEALTH CREATION - TRY HYPNOSIS » » » GOOD HEALTH - TRY HYPNOSIS » » » HAPPINESS - TRY HYPNOSIS » » »

HYPNOSIS » » » PLAY - TRY HYPNOSIS » » » PHYSICAL - TRY HYPNOSIS » » » MENTAL - TRY HYPNOSIS » » »

EMOTIONAL - TRY HYPNOSIS » » » WEIGHT CONTROL - TRY HYPNOSIS » » »



**Why not join in?**

## Social distancing doesn't mean no socials...

One of the great things about the Oddfellows is sharing good times with friends.

Although we can't see each other face to face right now, we're doing lots of great stuff online.

**Tuesdays, 10.30am**  
Coffee and Games Morning (Online).

**Wednesdays, 3pm**  
Fun Weekly Quiz (Online).

**Thursdays, 11am**  
Gentle Exercise Class (Online).

Contact Debbie on **07375 935 663** or **readingdistrict@oddfellows.co.uk** for further information and joining instructions.



**f Reading Oddfellows**  
**www.oddfellows.co.uk**

The Oddfellows is the trading name of The Independent Order of Odd Fellows Manchester Unity Friendly Society Limited, Incorporated and registered in England and Wales No. 223F. Registered Office Oddfellows House, 184-186 Deansgate, Manchester M3 3WB. Ref 1699



## TRUSTED TO CARE

### Friday Cuppa Club - an online event

**Every Friday, 11am - 11.30am**  
**Starting Friday 5th March 2021**

Join us every Friday for a morning of wellbeing activities, hosted by Customer Relations Manager, Vicki Lambourne.

- Poetry reading
- Singing
- Quizzes
- Seated Exercise
- Coffee and a chat

We use Zoom, an online meeting space, which is easy to use. Once you have booked your place, Vicki will send you the meeting details and tips for getting most out of attending an online event.

For more information or to book your free place please call us on **01635 897884** or email **vicki.lambourne@careuk.com**



**Wincombe Place care home**  
**Maple Crescent, Newbury RG14 1LN**  
**careuk.com/wincombe-place**




## We're back open!

**CURRENTLY SERVING OUTDOOR MEALS**  
**Thursday – Saturday**  
**lunchtime 12-2pm; dinner 5-9pm**

*In line with the next step of lockdown easing, we'll be open for indoor dining mid May!*

*Keep an eye on our website and social media for all the updates.*

Offering lunch, dinner, coffee, wine/spritz, and takeaway too. We've missed you!  
We can't wait to welcome you back.



**Tel: 0118 984 1333**  
**or 0782 347 0201**  
**www.ninos-trattoria.co.uk**





We stock delicious local, British & Continental cheeses as well as a wide range of delicatessen products. We're proud to support small artisan producers.

We pride ourselves on our customer service and are dedicated to providing cheese at its very best.

Come and visit us at 17 Reading Road, Pangbourne  
Find us on Facebook – The Pangbourne Cheese Shop  
Follow us on Twitter @PangCheeseShop

[www.pangbournecheeseshop.co.uk](http://www.pangbournecheeseshop.co.uk) 0118 984 3323



#### Garden Maintenance

- Fencing • Gates • Hedge cutting
- Decking • Patios • Grass cutting

**TEL. 07736 650 477**

email: [familytreegmc@gmail.com](mailto:familytreegmc@gmail.com)



**Get ready for BBQ season with  
quality meat from your local Butcher**



[greensofpangbourne.com](http://greensofpangbourne.com) 0118 9842063

GoPButchers GreensOfPangbourne



#### Garlands for high quality food and much more.

Seeds, nuts and grains | Sustainably caught fish |  
Organic fruit and veg | Artisan bread | Dairy &  
Non-dairy chilled foods | Speciality and "Free from"  
foods | COOK remarkable food for your freezer | Local  
beer | Organic wines | Health supplements | Natural  
Cosmetics | Eco-friendly household products |  
BOODY bamboo clothing | Candles |  
Essential Oils | Loyalty scheme

6 Reading Road, Pangbourne, RG8 7LY  
0118 9844770 [orders@garlandsorganic.co.uk](mailto:orders@garlandsorganic.co.uk)  
[garlandsorganic.co.uk](http://garlandsorganic.co.uk)



St Andrew's  
SCHOOL

**An outstanding co-educational day and boarding  
school set in 54 acres of Berkshire woodland for pupils  
aged 3-13**

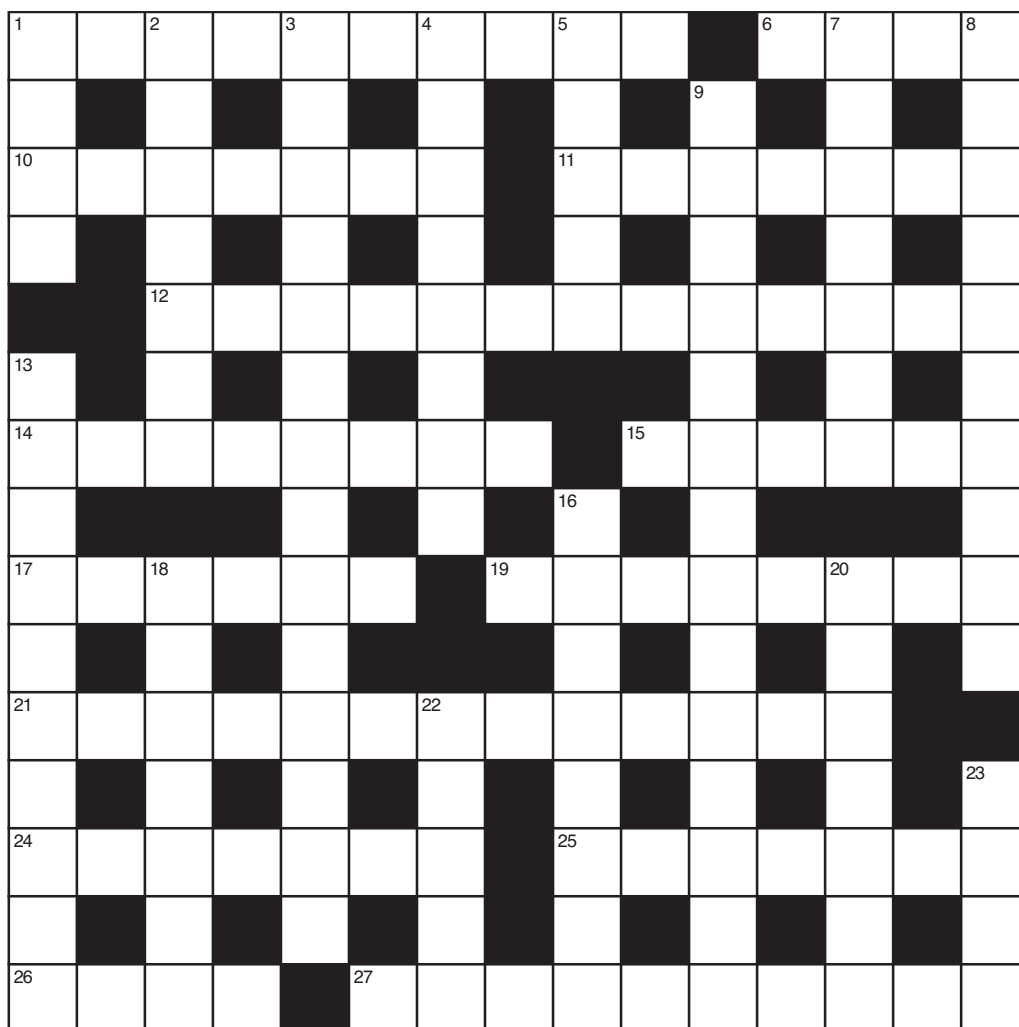


To arrange a visit, please contact:

[registrar@standrewspangbourne.co.uk](mailto:registrar@standrewspangbourne.co.uk)

0118 974 4276 [www.standrewspangbourne.co.uk](http://www.standrewspangbourne.co.uk)





CANTOR'S CROSSWORD NO. 17

## ACROSS

1. } Higher Education in tatters? (10, 4)
6. }
10. It's a nominal starting point (7)
11. So much less than a foot in the door (7)
12. Perhaps it's in a sitter's attic you'll sense the aesthete? (8, 5)
14. Things really start to hum when she's around (5, 3)
15. Poor Al entrapped by that proverbial make-up lady – this man's an island! (6)
17. A final twitch rounds off earth's curve in the far north (6)
19. Creative work's central here to what's legally defined, mapped out in them (8)
21. It's a totally simple choice: either come alone . . . (2, 3, 8)
24. The setter is quite adamant that sins sit awkwardly here (7)
25. Could be quite a snack, especially for fat felines out in the cold (3, 4)
26. Cuts off but includes an afterthought (4)
27. Not a welcome invitation for execution, unless on the promotion ladder (4, 2, 4)

## DOWN

1. It really was quite a leaving party (1, 1, 1, 1)
2. Take-off act is completed by its end in metropolitan art gallery (7)
3. For pure Sartre follower: lies sit in a text – deeds, not words are the "real" thing (14)
4. They can be seen as integral to marketing in the brewery business (8)
5. Some initial sign or sound of disapproval becomes total, eventually (5)
7. For poor Al again, this wake up call includes a sour mixup (7)
8. It's a quite unexpected start that leads to a headland (10)
9. Now described as exaggerated reaction but was entrenched in WW1 (4, 4, 3, 3)
13. Not really describing Tolkien's Middle Earth, though it goes all the way round (10)
16. You could put a foot in it here . . . or preferably go in with both (4,4)
18. Tries it on – on the ascent – but it's all talk! (5, 2)
20. Sounds like singularly slangy lone appeal from Marc Anthony to the Romans (7)
22. Could be that dreaded morning call for cameras to start rolling (5)
23. To say it's fair, starts the pattern – only partially true for Harris, Lewis et al (4)

(ANSWERS ON PAGE 24)

# CHURCH NEWS

## THE PARISH OF PANGBOURNE WITH TIDMARSH AND SULHAM

[www.pangbournechurches.org](http://www.pangbournechurches.org)



Sharing God's love with the people we serve

### CHURCH SERVICES

#### St James the Less, Pangbourne

For up-to-date details of all worship visit our website: [www.pangbournechurches.org/services](http://www.pangbournechurches.org/services)



### MAY

#### Sunday 2<sup>nd</sup>

10 am	Holy Communion	St James/ live-streamed
-------	----------------	----------------------------

#### Sunday 9<sup>th</sup>

7.45 am	Holy Communion (BCP)	St James
10 am	Service of the Word	Zoom

#### Sunday 16<sup>th</sup>

10 am	Holy Communion	St James/ live-streamed
-------	----------------	----------------------------

#### Sunday 23<sup>rd</sup>

10 am	Holy Communion	St James/ live-streamed
-------	----------------	----------------------------

#### Sunday 30<sup>th</sup>

10 am	Holy Communion	St James/ live-streamed
-------	----------------	----------------------------

### JUNE

#### Sunday 6<sup>th</sup>

10 am	Holy Communion	St James/ live-streamed
-------	----------------	----------------------------

#### Sunday 13<sup>th</sup>

7.45 am	Holy Communion (BCP)	St James
10 am	Service of the Word	Zoom

#### Sunday 20<sup>th</sup>

10 am	Holy Communion	St James/ live-streamed
-------	----------------	----------------------------

#### Sunday 27<sup>th</sup>

10 am	Holy Communion	St James/ live-streamed
-------	----------------	----------------------------

### Parish Vacancy Update:

The Parish Profile, the document which helps inform our potential new incumbent about our parish in Pangbourne, has been written and the role has been advertised. It is expected that interviews will be held in early Summer.

### NOAH'S ARK returns to St James church

Come along to St James at 10 am on Friday, 21st May when Noah's Ark restarts face-to-face sessions in a Covid safe environment.

For more information visit [www.pangbournechurches.org/noah-s-ark](http://www.pangbournechurches.org/noah-s-ark)

Story time, songs, chat and friendship for babies, toddlers, preschoolers, parents, grandparents and carers.



### Annual Parochial Church Meetings Sunday 23rd May at 10 am in St James

- Meeting to elect Churchwardens by parishioners
- Meeting of Electoral Roll members to receive the Annual Report and elect Parochial Church Council members and Deanery Synod members

The meetings will follow the 10 am service in St James the Less, Pangbourne



St Bernadette's Church    [www.douaiparish.org.uk](http://www.douaiparish.org.uk)    0118-971-5350

Over the Easter season at St Bernadette's Catholic Church in Horseshoe Road, we tried to hold as many of our "normal" services as possible, marking the solemnity of Holy Week and the joy of the Resurrection. Last year we weren't able to have services that people could attend in person, so we are grateful that we could celebrate these important events together this year, as well as keeping our virtual presence. We marked Holy Week with Masses on both Palm Sunday and Easter Sunday as well as the Passion service on Good Friday.

The sun shone on Good Friday morning and the children put on a socially-distanced Passion Play in the garden - telling of the important events leading up to the crucifixion. Rehearsals weren't possible, so most of the dialogue was pre-recorded; and those characters who needed to be close to one another were played by children from the same family.

**Sunday 9:30 am Mass** has now resumed weekly, and we continue to follow Covid-secure guidelines. To book, please email [mass.woolhampton@gmail.com](mailto:mass.woolhampton@gmail.com)



We are a family run, independent and experienced care provider.  
We support independent living for the elderly and adults with disabilities at home

## WE OFFER

- Day and night care • Respite care • Holiday accommodation • Emergency care
- Dementia care • Home from hospital rehabilitation • Competitive and fair rates • All inclusive social events for our clients and family members

Get in touch for more information:

**0118 942 9889 | [office@chrysaliscare.org](mailto:office@chrysaliscare.org)**

23c Horseshoe Park, Horseshoe Road, Pangbourne, RG8 7JW  
[www.chrysaliscareathome.org](http://www.chrysaliscareathome.org)





You're not normal. No one is. We are all different and we're all wonderfully unique.

At The Movement Clinic we pride ourselves on helping everyone, young and old, find a way to move more and feel better.

We don't do gimmicks or mysterious gadgets, we don't make outrageous claims, we don't offer quick-fix promises, fad diets, or celebrity exercise regimes.

We rely on decades of collective experience and expertise to establish what works for you.

So whether you're injured, in pain, stressed, overweight or just tired of doing the same thing over and over again and getting the same disappointing results, give us a call and find out how we can help.

Personal Coaching • Weight Loss • Strength & Conditioning • Running Technique • Injury Prevention & Rehabilitation  
Corrective Exercise • Physio-led Pilates • Specialist Pilates for People with Mobility Issues • Yoga • Massage • Injury Treatment  
Strapping & Taping • Neurological Physiotherapy for Adults and Children

[www.themovementclinic.co.uk](http://www.themovementclinic.co.uk) • 0118 327 9405 • [info@themovementclinic.co.uk](mailto:info@themovementclinic.co.uk)

**WEEKLY ZOOM YOGA CLASSES**  
 Teen Class: Weds 4-5pm  
 Adults Level 1: Weds 7-8pm  
 Adults Level 2: Weds 8:05pm-9:05pm  
 Chair Yoga: Thurs 1:30-2:15pm  
 Kids class (4+): Thurs 4:30-5:15pm  
 Suitable for all ages and abilities  
 1:1 and group  
 Private classes available upon request!  
 Call Kate 01725 947140  
[www.skelyoga.com](http://www.skelyoga.com)

## Revitalise Foot Care

Mobile Foot Health Professional

Nail trimming, cracked heels, corn and callus removal, fungal infection, thickened nails and verrucae advice.

**Contact Karen on 07542 676158  
or 0118 3435579**

[www.revitalisefootcare.com](http://www.revitalisefootcare.com)  
[revitalisefootcare@gmail.com](mailto:revitalisefootcare@gmail.com)

The **Boathouse**  
Dental Surgery

[www.boathousedental.co.uk](http://www.boathousedental.co.uk)

Tel: 01491 872394

# Are Dental Implants for **you?**

"Cool, calm and efficient with latest technology, great place for an implant!"  
 Mr Anthony Guy

If you have missing teeth or loose fitting dentures, the answer is **YES!**

High Street, Goring on Thames, Oxfordshire RG8 9AB

Email [reception@boathousedental.co.uk](mailto:reception@boathousedental.co.uk)

Call **01491 872394** to book a **consultation**



# Berkshire's Exclusive Skin Health & Laser Clinic

## Radiant skin, the natural way...

... can be yours with our non-surgical laser facelift and bespoke skin health programs, uniquely developed using science and technology from around the world.

As a specialist laser and skin clinic, we are here to help you.

- Non-surgical laser face & neck lifting
- Acne & rosacea specialists
- Pain-free laser hair removal
- Wrinkle & skin remodelling
- Tattoo removal
- Emsella for incontinence
- Pelvic floor rehabilitation
- Non-surgical blepharoplasty



### Andresa Aesthetics Exclusive Skin Health & Laser Clinic

Tel: 01635 800183 | [info@andresa.co.uk](mailto:info@andresa.co.uk) | [www.andresa.co.uk](http://www.andresa.co.uk)

Lower Wasing Barn, Wasing Lane, Nr Woolhampton RG7 4LY

## OFFICE SPACE AVAILABLE TO LET

*Available now*

Unit 4 Enterprise House  
41 Reading Road, RG8 7HY

560 sq ft – £7,000 a year

Two dedicated parking spaces, private entrance, gas central heating, wood-laminate flooring, dimmable downlights and fluorescent strips, kitchenette, cloakroom and separate WC.

To arrange a viewing call or message  
07990 520389 / 07775 638611  
email: [info@themovementclinic.co.uk](mailto:info@themovementclinic.co.uk)

## KJ Cosmetics

— BEAUTY CLINIC —

Laser Hair Removal  
&  
Skin Rejuvenation

Semi-Permanent  
Eyebrows | Eyeliner

Lash Extensions  
Lash Lift & Tint

Facials  
Dermaplaning  
Skin Peels

Massage  
Manicure



Free Parking | Free Consultation  
Weekend & Evening Appointments

[www.kjcosmetics.co.uk](http://www.kjcosmetics.co.uk)  
[kofell@kjcosmetics.co.uk](mailto:kofell@kjcosmetics.co.uk)  
0115-974-4471

Hewitts Wood Farm  
Bodley, RG7 4DH



## Chiropractic the McTimoney Way

for people and  
small animals

Multi-disciplinary clinic offering integrated  
health care in a friendly, relaxed setting

**Chiropody & Podiatry  
Sports & Remedial Massage  
Acupuncture & Homeopathy**

*Suitable for all ages. Free spine check available.  
Evening and weekend appointments available.*

*For Health Chiropractic*

**0118 984 3473**

Unit 2, The Old Mill  
61 Reading Road  
Pangbourne  
RG8 7HY

[www.forhealthchiropractic.co.uk](http://www.forhealthchiropractic.co.uk)



Award Winning Salon, Virgo Beauty are offering a full  
range of Beauty Treatments to cover all your needs which  
include Waxing, Manicure and Pedicures, Electrolysis,  
Massage, CACI and Facial Treatments.

With highly qualified therapists with collective  
experience of 85 years knowledge of the beauty industry,  
our salon is here to offer bespoke, relaxing treatments,  
for customers old and new.

Contact 01491 874202 to book an online Zoom  
consultation, or find out more about the ordering  
online of Espa, Clarins and Alumier MD products.

*Beauty for today, tomorrow, & years to come!*

☎ 01491 874202



# Cosmetic & Laser Skin Clinic



- laser hair removal
- lines / wrinkles
- crows feet
- lip enhancement
- microdermabrasion
- skin tightening
- brown spots
- skin peels
- mole, cyst, skin tag
- tattoo removal
- facial / leg veins
- Vaser - fat removal
- eye lid surgery
- dermaroller
- underarm sweating
- acne

*Professional, Caring and Confidential*

Treatments for Men and Women

The  
**CHILTERN** *medical clinic*

Dr N. Munnelly Medical Director



60 Broad Street • Reading • RG1 2AF  
1 Thames Court • High Street • Goring • RG8 9AQ

**HIGHLY SKILLED DOCTORS RENOWNED FOR EXCELLENCE**

**Call 01491 873 989 or 0118 958 2016**

**[www.chilternmedical.co.uk](http://www.chilternmedical.co.uk)**



# It's time to start...



**Join now and get your FIRST MONTH FREE!**

## BRADFIELD BENEFITS

- ✓ No Joining Fee
- 📅 Flexible Membership
- 👤 1-2-1 Personal Training
- 👤 Fitness Classes for All Levels
- 👨‍👩‍👧 Family Friendly
- 📍 Stunning Location
- ❤️ Cardio & Resistance Gym
- 🏊 25m Indoor Swimming Pool



Swimming · Fitness Classes · Sports Hall · Gym · Wellbeing



BRADFIELD COLLEGE SPORTS COMPLEX

email: [frontdesk@bradfieldcollege.org.uk](mailto:frontdesk@bradfieldcollege.org.uk) tel: 0118 964 4600

[www.bradfieldsportscomplex.co.uk](http://www.bradfieldsportscomplex.co.uk)

# Pangbourne Club

NEW  
MEMBERS  
WELCOME



## Facilities

- Air Con throughout
- 3 full size snooker tables
- Pool Table
- 2, 2mx2m projector screens and large TV's
- BT Sports
- Conference Facilities
- Function Room for hire with kitchen facilities and licenced bar

## Entertainment

- Live Entertainment every second saturday of the month
- Bingo every Thursday evening
- Jazz 1st Sunday evening of every month (fee applies)
- Regular exercise classes
- Weekly raffles

LOWEST  
DRINK  
PRICES  
IN THE  
VILLAGE



## Teams

- Crib teams
- Snooker Teams
- Table Tennis



## Objectives

PWMC is run as a non-profit making organisation by its members through an elected committee, which provides a social facility for residents of Pangbourne, the surrounding area and for people working in the village.

## Pangbourne Club

Rosewood Hall, Whitchurch Rd, Pangbourne, Reading, RG8 7BS

t: 0118 9842885

e: [info@pangbourneclub.co.uk](mailto:info@pangbourneclub.co.uk)

Visit us on Facebook

[www.pangbourneclub.co.uk](http://www.pangbourneclub.co.uk)



## PANGBOURNE ALLOTMENTS

On Saturday 15 May from 10-12.30 we will be holding our usual plant sale on the forecourt of Garlands (courtesy of the Thorne family). We don't yet know what the Covid rules will be for May, but, although it is in the open air, we may have to ask for masks to be worn as people are in close proximity. The plants are all grown by allotment holders and are usually healthy and very reasonably priced. Please put the date in your diary.

The PAA AGM took place on 7 April via Zoom with Alan Heighway as the host. There were 21 screens, so a good turnout. All the present members have agreed to serve again, so the committee is Cathy Pumphrey (Secretary), Stuart John (Treasurer), John White, Alan Heighway, Di Naden, Davina Griffiths, Claire Middleton, Matt Wain and Joanna Power – all dedicated allotment holders, so the PAA is in good hands.



### SPRING CLEAN

The spring clean of the allotments, with skip, took place on the weekend of 10/11 April, and the area near the entrance gate cleared and tidied. A slow worm and a frog were among the creatures rescued from the rubbish pile and re-located to another compost heap and a pond.

We try to keep fires to a minimum, so the communal bonfire on the chicken run (courtesy of Daron Andrews) is a chance to limit them to one or two days a year.

As I write, spring is still very dry and cold (with a heavy frost on April 6), so a lot of seed-sowing and planting has had to be delayed. Let's hope the weather warms up and we can catch up on all those postponed tasks!

Twenty-one of the Woodland Trust's little trees have now been planted round the boundaries of the allotments. The "teenage" elms on the eastern boundary are dying – presumably from Dutch elm disease – so let's hope the new saplings will grow to fill the gap.



We welcomed several new allotment holders recently, but we still have a healthy waiting list. If you'd like to join that list, please contact the Assistant Parish Clerk, pangbourneasstclerk@gmail.com To date, we have managed to limit the wait to about seven or eight months, which is very moderate compared to urban waiting times!

---

## PANGBOURNE BOWLS CLUB

At long last, Pangbourne can be proud of its Bowls Club which is now open for business. After being closed for the whole of last year, we now have a superb bowling green and our members are now enjoying social and competitive bowling once again.

It was good to see so many new members coming to our Open Day and we are all looking forward to great success in our league matches against other clubs and our own competitions.

We have had to make a number of minor alterations in the way we operate to ensure a covid-free environment for everyone taking part but things should get a lot easier once the lockdown restrictions are gradually lifted.

We still have room for even more new members so come down to the green any Monday afternoon or evening and give it a go. This season, all new members pay just half the normal membership fee saving you £50. Our bowling green is at the Recreation Ground, Thames Avenue, Pangbourne and we look forward to seeing you very soon.

For further details, please contact Alan Copeland by e-mail to alan@alancopeland.co.uk or by phone on 01491-681471. You can find our full programme of fixtures on our website: [www.pangbournebowls.co.uk](http://www.pangbournebowls.co.uk).





## PANGBOURNE HERITAGE GROUP LAUNCHING THE BOOK

Well, we finished it, after many months of researching, documenting and drafting out, the final proof went to the printers in January, and we now have copies to sell on a non profit basis.

The book is as it says on the front cover: *The Shops, Trades and Businesses of Pangbourne*. Living Memories from 1949 to the present day. This is a first for Pangbourne, and we have relied on village people to tell us their stories, even if some of them no longer live in Pangbourne. We have sent copies out to those who helped us provide the background to the facts and figures and received some very encouraging feedback. We must have got it right. We also have an excellent archive of photographs and advertisements which was put to good use. We felt strongly that we were doing this for the village, and fulfilling the primary aims of the Heritage Group, which is to provide a link between past and present, and to reflect on both.



One thing that struck me when walking past the present Bakery in the village at the end of last week; people will always queue for fresh bread and other bakery products. There is a picture in the book of Annetts and Dearlove's bakery [where Davis Tate is today] in 1926 when the General Strike caused bread shortages, and today with the limitation on the number of customers entering the shops, we have all got used to queuing again. Hopefully by the time this article appears in Pangbourne Magazine, we will have seen the beginnings of the end of lockdown. The value placed on local businesses overall is cause for reflection. At the start of the period covered by the book, the country was still recovering from five years of war, and day to day food items were not always available. Even then, the village had a good range of shops and businesses, including hairdressers and tea shops as well as the groceries, greengrocers, butchers and bakers. We no longer have a blacksmith, but virtually every other trade has diversified to comply with the needs of today, or land has been used for other purposes.

As from 12 April, copies of the book will be available in the Library, Rhubarb Tree, Pangbourne Cheese shop and Garlands Organics. The price is £10. We are grateful to the four outlets who will be giving you an opportunity to purchase a copy, and we hope we can have more chances to display the book as restrictions ease.

Our thanks go to fellow members of the group who helped with and encouraged the project, and of course the many members of the village community who made this possible. I can honestly say that at some stage we seemed to have a lot of pieces of paper which somehow miraculously finished up as a manuscript, largely due to Ellie's efforts, to which the photos and adverts from the archive were added. Working through both lockdowns has presented its challenges, but we were delighted to have a finished product that we felt you would all enjoy.

Lesley Crimp, Jane Rawlins and Ellie Thorne



## PLAY CRICKET FOR PANGBOURNE

CALL Cpt. DAN: 07956 526 505

[www.pangbournecc.org](http://www.pangbournecc.org)

## PURLEY HORTICULTURAL SOCIETY

### AGM

The Society held their 43rd Annual General Meeting on Zoom on the 17th February, 2021. Paul Humphreys was re-elected as Chairman, together with the 2019 Committee.

### TRADING SHED

This is now open from 10-11am (Saturdays only) and starting on Wednesday, April 7th from 5pm until 6.30pm.

### SUMMER SHOW

We are hoping to hold this on Saturday, 11th September, but this is dependent on the Memorial Hall being available due to covid 19 restrictions.

### TALKS

Speakers have been booked for October 20th and 17th November meetings, but please check the Society's website ([purleyonthames.org.uk/PHS](http://purleyonthames.org.uk/PHS)) for more details.

Marion Dabbs – 9422349



## PANGBOURNE YOUTH FC



After a stop-start first half to the football season the second half is shaping up to be a busy one for Pangbourne Youth FC.

The season started full of anticipation at the prospect of an uninterrupted COVID-free run of training and matches. New floodlights should have meant that winter training could continue outside for all teams, but two further lockdowns put paid to that hope. Some teams were able to arrange individual fitness drills and non-contact training in pairs, but for players and coaches alike the lifting of restrictions at the end of March couldn't have come soon enough.



*PYFC teams resume post lockdown training*

Training and matches have now resumed with a busy schedule planned for the rest of what will be a slightly extended season. Hopes are high for some thrilling football and the chance of seeing PYFC teams progress as far as possible through their leagues. The Pumas U13s are currently top of the Berkshire Youth Development League (BYDL) so there's a real possibility of some silverware to add to the trophy cabinet at the end of it all.

### PANGBOURNE YOUTH FC TEAMS

#### **Hawks – Under 7 (school year 1 or 2)**

Training on Sunday mornings.

#### **Hurricanes – Under 8 (school year 2 or 3)**

Play in the BYDL on Saturday mornings.

#### **Hurricanes – Under 9 (school year 3 or 4)**

Play in the BYDL on Saturday mornings.

#### **Red Kites – Under 10 (School year 4 or 5)**

Play in the BYDL on Saturday mornings.

#### **Phoenixes – Under 11 (school year 5 or 6)**

Play in the BYDL on Saturday mornings.

#### **Piranhas & Panthers – Under 12 (school year 7)**

Two teams. Play in the BYDL on Saturdays.

#### **Pumas – Under 13 (school year 8)**

Play in the BYDL on Saturday mornings.

#### **Falcons – Under 15 (school year 9 or 10)**

Play in the East Berkshire Alliance League on Saturday mornings.

### NEW U7 TEAM FOR 2021/22 SEASON

Already proudly supporting seven teams PYFC is delighted to announce the launch of a brand new team for the 2021/22 season – the Pangbourne Youth U7 Hawks!

This new squad is open to boys and girls aged 5 or 6 at the start of September 2021 – school years 1 and 2. PYFC is supporting this new team with experienced coaches and administration and is looking for parents who would like to get involved and help once it is up and running.

Training will be on Sunday mornings at Pangbourne Rec with the chance of a free taster session for children to see how they like it. The plan is to eventually move to competitive games within the BYDL which will be five-a-side on Saturday mornings.

If your child is interested in joining this new team, or one of our existing teams, please contact PYFC via the website at [www.pangbourneyouth.co.uk](http://www.pangbourneyouth.co.uk). Visit our Facebook page for Club updates and team information – [www.facebook.com/PangbourneYouth](https://www.facebook.com/PangbourneYouth).

## GORING GAP BOAT CLUB



It has been an exciting few days for us at GGBC as we are finally back on the water. Over the bank holiday weekend there were 79 people rowing, including our 16 newest recruits taking part in our current Learn To Row course.

A litter pick had been scheduled for Easter Monday, to remove as much of the rubbish that this winter's high water levels have deposited in the trees and shrubs as we could. Unfortunately the weather conspired against us and it was too windy to go ahead with this event. We have postponed it until another time, when hopefully we will not have to brave snow flurries.

The hardy souls who turned out on Monday anyway were put to good use, working on our otter holt. Local wildlife expert Steve Gozdz of GG Wildlife Walks has been advising us on the construction of a new luxury 2-bed otter apartment.

Another piece of great news is that we are planning on holding the Goring and Streatley Regatta on 17th July 2022. Crews of any ability should express their interest by emailing [race@goringgapbc.org.uk](mailto:race@goringgapbc.org.uk), or alternatively contacting Richard Berkley on 07768 512079.

*Goring Gap Boat Club . . . Get on Board . . . Recreational Rowing for the Community*



## ADVENTURE DOLPHIN CHARITY

### RECLAIM YOUR ADVENTUROUS SPIRIT WITH ADVENTURE DOLPHIN POST LOCKDOWN

*"Believe me, my young friend, there is nothing – absolutely nothing  
– half so much worth doing as simply messing about in boats."*

*Kenneth Grahame, The Wind in The Willows*



As you leave Pangbourne to cross the Thames via Whitchurch Bridge the last two buildings one sees are on the left, The Boathouse Surgery – we all know what they do, and on the right nestled between the small car park and the meadow there is Dolphin House – what exactly goes on in there? This is the home of the one of Berkshire's leading activity charities, **Adventure Dolphin**.

The Charity took over the running of the centre from West Berkshire Council on 1st April 2018 and is home to a variety of different activities not only those that provide opportunity for messing about on the river. In fact, Adventure Dolphin is a centre for land as well as water-based adventure with a thriving Duke of Edinburgh Awards (DofE) Scheme programme and a climbing wall to provide challenge for novice and the experienced alike.

Our aim is to offer local communities – young people and adults alike, the opportunity to experience the great outdoors through a series of development courses and club membership, run by experienced qualified members on a voluntary basis. Our coaching programmes have resulted in young people engaging in lifelong enjoyment and learning in multiple aspects of outdoor adventure many of them eventually becoming highly qualified coaches.

Paddling (in a boat, standing up on a board!) regularly is a great way to keep fit and we welcome people of all ages from about 8 years and up, whether you are already a paddler or would like to give it a go for the first time. As your confidence and enjoyment grow you may wish to join us on an organised trip such as a paddle down The Dordogne or the upper reaches of The Thames. As we too look to emerge from the current pandemic why not consider us for a spot of paddle boarding or perhaps you would like to invest your energies into learning how to canoe or kayak – do you know the difference?

**Pangbourne Canoe Club (PCC)**, the racing section of Adventure Dolphin, meet regularly throughout the year on a Saturday morning and Tuesday evenings. In fact, it has within its midst's several members who have achieved national recognition in the internationally famous Devizes to Westminster Canoe Race and the National Regattas.

So, whether you are for messing about on the river, learning a new outdoor adventure skill, coaching, climbing or participating in the DofE programme look out for our re-opening, our open days and courses. There is nothing half so much as worth doing than a visit to Adventure Dolphin.

We hope that you were able to make the best of the recent Easter break when the rules changed and we

were able to start meeting friends and family again, doing some of the things we have missed during the last year.

At last we are able to resume some of our activities and open the building. It has been a long time in coming and we sincerely hope we can begin to bounce back strongly. As we are now a voluntary Charity we need to be able to do this to maintain our financial stability, which like most organisations has been tough with no income!!

We have been planning and preparing gradually to reopen and again having to make sure all the services are up and running and checked, so our facilities team have been busy.

### Work and Meeting Spaces

During the lockdown we have had the building decorated and changed a little. The big change for us is it will allow members of the community to be able to hire space in our office and meeting rooms. So if you are still encouraged to work at home you could do a couple of days with a change of scenery in our office, or if you have a small meeting arranged you would be able to use our meeting room during the day time. If you feel this may be of interest to you please contact Angela at [Bookings@Adventuredolphin.co.uk](mailto:Bookings@Adventuredolphin.co.uk).

### Community Groups

Our regular community groups are also looking to return, some over the summer with others waiting for the autumn term. We are always on the lookout for Community groups who would like to meet on a regular basis in our building during the day time and at weekends. The Access to the building is good and we do have a lift to the first floor. A selection of local groups using us include:- Pilates and Yoga classes, Art and Painting groups; Fitness training; Scouts, Cubs and Beavers. We have had notice from two other groups who have regretfully closed over the last year. If your group is interested again contact Angela at [bookings@Adventuredolphin.co.uk](mailto:bookings@Adventuredolphin.co.uk).

### Duke of Edinburgh's Award

The first group to resume were our Duke of Edinburgh Award groups who met on the evening when the regulations eased. It is unfinished business the Bronze Group of three different teams met to collect their expedition equipment so they could complete both practice and their qualifying walking expeditions over the Easter Holidays. Due to the pertaining regulations and requirements a very different pattern to what we previously did, but never the less, the challenges of the routes will be the same standard as ever. The Silver group have had to wait until the River gets a little



warmer, they are starting their water based expedition training at the end of April the two teams we have and will be completing their expedition's over the summer. We are conscious we have missed a whole year group intake so we will be recruiting earlier than usual to try and get this year's group up and running by the summer holidays. If you would like to join us and have some fun and meet new friends please contact us at [DofEcoordinator@adventuredolphin.co.uk](mailto:DofEcoordinator@adventuredolphin.co.uk). To do Bronze the minimum age is 14 years old or in year 9 at school; For silver 15 years old or in year 10 at school; For Gold you need to be 16. More details can be found on our website [www.AdventureDolphin.co.uk](http://www.AdventureDolphin.co.uk) or by looking on the D of E Website [www.DofE.org](http://www.DofE.org).

We would like to congratulate our following members who have completed their Achievement Award in advance of completing the expeditions when they will all receive the full Award.

#### BRONZE:

Aaliyah Bastin; Isabelle Carpenter; James Cormack; Robert Higham; Alfred Hopcroft; Andrew Jackson; Alexander Moore; Tom Phillips; Reuban Poole; Alexander Riches; Grace Sergeant; Annabelle Stonell and Andre Tott.

#### SILVER:

Isaac Aitchison; Arabella Burns; Louis Kenard; Amy Saunders; Rebecca Servais; and Tom Wells.

#### GOLD:

Georgia Tranter; Sanchit Aapan; Shivam Bharati; Franseca Flash.

#### Climbing

This year climbing will feature in the Olympics for the first time and no doubt create much interest is planned to resume in September. The delay in reopening our Wall is due to the current social distance regulations and the actual size of our climbing area. Our technical adviser is recommending we wait until the guidance is reviewed again later in the summer. If we can resume our NICAS climbing courses and our club sessions earlier we will do. If you are interested in climbing please go on to our website where up to date information will be available.

#### Paddlesport

Our clubs have now been able to restart. The first on the water were the competition groups with members beginning to get paddle fit for this season's racing events which we hope will take place. The group meet on a Saturday morning and Tuesday evening for joint training and for specific training at other times during the week. Second on the water were the recreational and social paddling groups, these meet on a Sunday morning and a Tuesday evening, when the group may go for a short paddle.

#### Stand Up Paddleboards

New for this summer is our intention on a Tuesday evening to start a stand up paddle board section where folks with their own boards can get together for a paddle and meet socially afterwards. If you would like

more information about this please contact us through [info@adventuredolphin.co.uk](mailto:info@adventuredolphin.co.uk) and we will forward your contact details on to Brenda our leader.

We are also hoping to operate a canoe and kayak canoe hire facility on the weekend afternoons if we can muster enough volunteers to help organise.

#### Evening Courses on the water

Evening courses in Canoeing, Kayaking and stand up paddle boarding. These we hope to start operating in early June after the summer half term when the regulations will we hope have changed again to allow us to use the changing rooms. We are only able to book groups of up to 5 people at the moment. For more information and to book on a courses please see our website [www.adventuredolphin.co.uk](http://www.adventuredolphin.co.uk).

#### Summer Holidays

We are hoping that the Outdoor Academy may well be able to offer activity weeks/days based at the Centre, again information will be on our website.

We now look forward to seeing as many of you on the water with us this summer to make up for a lost year.

*Simon Halliday*

*Adventure Dolphin Trustee*

<https://adventuredolphin.co.uk>

## DOLPHIN BUSINESS HUB

The Adventure Dolphin Centre has been quietly busy over the past couple of months getting Covid safe and freshening up with a splash of paint and setting up the Dolphin Business Hub.

You'll get a warm welcome over in the Dolphin Business Hub. We're a small, friendly shared workspace, designed to provide a comfortable office environment away from home for the small business owner, self-employed or home worker.

We've got serviced desks, 'Hot desks' and great meeting/training room spaces for hire on an hourly, daily, weekly or monthly basis. Best of all we've got some great introductory prices for 2021.

- Are you tired of working from home but don't want the commute?
- Do you need an extra desk space but just on an ad-hoc basis?
- Are you 'zoomed' out and want a small Covid friendly meeting?
- Are you a local business who needs a meeting/training room or some extra space?
- Do you have a great workshop idea, if only you had the space?
- Do you want a desk with a view?

If you say a big YES to any of the above, you may want to come and have an introductory visit (by appointment) around the Hub in the Adventure Dolphin Centre by Pangbourne Meadows.

Contact Angela on 07860 274 162 for more information.

## PANGBOURNE TWINNING ASSOCIATION



We are always delighted to welcome new members to the Association, and membership remains free for everybody. Contact Lauren Kilsby via our website [pangbourne-twinning.org](http://pangbourne-twinning.org).

Due to Covid, there has been little activity since the last issue of The Pangbourne Magazine.

### VISIT TO HOUDAN

Given the current uncertainties about travel abroad, the Committee has reluctantly decided that there will be no visit to Houdan in 2021.

### ANNUAL GENERAL MEETING

The Annual General Meeting was held on 23 March, on Zoom. The only material change is that Alison Hill has stepped aside as Chair, but remains on the Committee. The new Interim Chairman is Nigel Suffield-Jones.

### ASSOCIATION ACTIVITIES

Details of **French Language Lessons** and the **Marcher et Parler** (Walk and Talk) initiative are available from Lauren Kilsby. We are expecting to show **films** again from October, and other activities, such as the **Art Café** coffee mornings, will be held when Covid restrictions permit. Details will be made available via [pangbourne-twinning.org](http://pangbourne-twinning.org).

In the meantime, a little light relief:

### WHY DO WE DRIVE ON THE LEFT?

When I was last in Houdan, I was asked why we in the UK insist on driving on the left. Being at the height of the Brexit debate, I was made to feel as though this was no more than a further example of 'perfidious Albion', determined to be as out of line with Europe as possible. "Well", I replied in my best French, "it stems from the fact that the large majority of Europeans are right-handed". At which point my French friends really did think that I was taking them for a ride.

As a broad generalisation, there are many more hedges in England than in France. Here, the coachman, for example for a coach-and-four, sits on the right but

controls the horses with his left hand, holding the whip in his right hand. If the coach is driven on the right-hand side of the road and the coachman applies his long bow-topped whip, he is in danger of entangling it in the hedgerow. So – he drives on the left, with his whip towards the middle of the road, which position also gives him a clearer view of the road ahead.

In Middle Ages those travellers able and wealthy enough to travel on horseback would invariably carry a sword slung on their left hip, to be drawn by and used in their right hand, so they too would keep to the left on any track or road.

By the late 1700s, very large wagons had evolved, primarily carrying goods but also, as with the French *diligence*, passengers. Such vehicles were usually not driven by a coachman but either controlled by a carter walking to one side or a postilion. If the postilion rides the left-hand horse, he shields the riderless horse from on-coming vehicles. Also, if he were to ride the right-hand horse, he would be trying to control the second horse with his left hand. These considerations made it more sensible to be on the right hand side of the road.

Such very large vehicles were more common in mainland Europe than here, and a decree in France in 1792 required all traffic to keep to the right. This was later enforced by Napoleon in all the territories that France occupied during his time in power. However, in England the left-hand rule was included in the Highway Act 1835, and subsequently applied throughout the Empire.

The contrast in approaches has been admirably demonstrated at the Berkshire Show. The riders of the King's Troop Royal Horse Artillery are controlling the riderless horses with their right hands.

If one were in a coach with only a postilion in charge of the horses, harm to him whilst the coach was underway would make things very difficult. Perhaps, if one insisted on being driven in a thunderstorm, it was after all worth having a phrase book in one's host language giving 'My postilion has been struck by lightning'.

Stay safe and well, until we can meet again, face-to-face.

*Nigel Suffield-Jones, Lauren Kilsby and Alison Hill*



*Coach-and-four. The position of the whip is clearly shown.*



*French Diligence.  
(after Charles Cooper Henderson)*



*King's Troop, Royal Horse Artillery.  
Note how the riderless horse is being controlled.*

## PANGBOURNE TENNIS CLUB

### TENNIS IN PANGBOURNE IS BACK IN FULL SWING!

With the easing of lockdown conditions on Monday 29th March, the tennis club was able to make the courts available again for the community. Welcome to the many new members joining during March and welcome back to our many loyal players!

We were blessed with perfect weather in the first week of opening. The return of winter the following week, complete with snow showers, couldn't dampen the enthusiasm.

Over the past year the committee have been focused on raising funds for court resurfacing. We were delighted to be given a grant from West Berkshire Council which, along with the matched funding provided by the Greenham Trust, has allowed us get started on this major project. We were able to have the pair of courts resurfaced before the season opened and the other court will be resurfaced in May, weather permitting. This court will be out of action for about six weeks, but once the work is done members will have the pleasure of playing on three courts all in excellent condition. The club would also like to thank the Parish Council for the work over the winter on the trees surrounding the courts.



The first Sunday coaching session in sunshine on the newly sprayed courts.

And 3 days later, braving the snow!

The tennis club is now in full swing for the summer season, with coaching for adults and juniors and club play all underway.

Membership for 2021/2022 is now open. The year runs from 1st April to 31st March.

CATEGORY	MEMBERSHIP FEE
Adult	£60
Family (2 adults and all the children)	£130
Junior (1st, 2nd + subsequent siblings)	£25, £20, £15

You can renew your membership or join the club at [www.pangbournetennis.org/membership](http://www.pangbournetennis.org/membership).

### Coaching for Adults

There's a full programme of coaching for adults this summer, under the watchful eye of our well respected coach Damian Lane. This includes the popular 'Back to Tennis' programme for players who are either new to tennis or haven't played for a long time. The number of places on each course is limited, so check [www.pangbournetennis.org/coaching](http://www.pangbournetennis.org/coaching) for full details and to book your place on any of the courses. Sessions are £10 each, with discounts offered for advanced booking.

Tuesday	18:00 – 19:30 19:30 – 20:30	Club Coaching Back to Tennis
Thursday	13:30 – 15:00	Doubles Drills and Tactics
Sunday	11:00 – 12:30	Club Coaching

### Junior Tennis Coaching

Junior tennis coaching is on Thursdays this season for children from four years and upwards. The first week of the programme took place on Thursday 22nd April. If you have not yet registered your children, please do get in touch at [juniors@pangbournetennis.org](mailto:juniors@pangbournetennis.org) to see if there are any places left.

### Club Social Tennis

There are many opportunities for social play with other members. We are running box leagues to give members the chance to play friendly, but competitive matches in leagues with players of similar standards. After a very successful pilot over the Easter Holidays, there are regular sessions for social tennis on Friday evenings and Saturday afternoons. Until the lockdown is released, we are limiting the numbers at these sessions to 12 so that social distancing can be maintained. You don't need a partner and we are particularly keen to welcome members new to the club to come along to these sessions.

You can sign up for the box leagues and register your interest in attending the social tennis sessions by emailing [info@pangbournetennis.org](mailto:info@pangbournetennis.org)

The popular club tournaments will be back this summer too. Keep an eye on the website for further details.

### An Occasional Player?

The club is offering a monthly pass for occasional players. It's £10 per adult or £20 for a family. To activate a monthly pass, please email [info@pangbournetennis.org](mailto:info@pangbournetennis.org) or phone 07554 432216. Payment is by internet bank transfer. Monthly membership gives you access to the courts and the booking system and you are welcome to join in with other activities taking place whilst your pass is valid if there are spaces available.

Please do get in touch to find out more about the club by emailing us at [info@pangbournetennis.org](mailto:info@pangbournetennis.org)

Pangbourne Tennis  
Club Committee

**pangbourne**  
tennisclub





**PANGBOURNE VALLEY PLAYGROUP**  
**PLACES NOW AVAILABLE**

Pre-school childcare for 2 to 5 year olds. 30 hours and shared funding accepted. Morning, lunch club and afternoon sessions are available. We are located in the grounds of Pangbourne Primary School.

**(0118) 984 1661**  
**pvp.g.enquiries@gmail.com**  
**www.pvp.g.org.uk**




## CANTOR'S CROSSWORD NO.17 ANSWERS

### ACROSS

- 1 & 6 UNIVERSITY RAGS  
 10 INITIAL  
 11 TOEHOLD  
 12 ARTISTIC TASTE  
 14 QUEEN BEE  
 15 AVALON  
 17 ARCTIC  
 19 CHARTERS  
 21 OR ALL TOGETHER  
 24 INSISTS  
 25 HOT DOGS  
 26 LOPS  
 27 STEP UP HERE

### DOWN

- 1 UKIP  
 2 IMITATE  
 3 EXISTENTIALIST  
 4 SALESMEN  
 5 TUTTI  
 7 AROUSAL  
 8 SUDDENNESS  
 9 WENT OVER THE TOP  
 13 EQUATORIAL  
 16 SHOE SHOP  
 18 CHATS UP  
 20 EARHOLE  
 22 ONSET  
 23 ISLE



## Woodborough HOUSE

Say goodbye to awkward gaps and loose dentures.  
 Get your dream smile with dental implants!

*Changing lives through smiles.*

CALL US TODAY ON  
**0118 984 3108**

OR EMAIL  
**CATHY@WOODBOROUGHHOUSE.COM**

[WWW.WOODBOROUGHHOUSE.COM](http://WWW.WOODBOROUGHHOUSE.COM)

We come to the end of our year, we adjusted – our next season 21/22 will be different, more usual hopefully – all to be discussed at our upcoming zoomed AGM.

Our long standing member David Dare is our new webmaster, at present busy building 'The Gallery' showing members favourite images. David's own images are complex, many layered his AV's (audio visual) clever and often very funny. Find us at [www.whitchurchhillcameraclub.co.uk](http://www.whitchurchhillcameraclub.co.uk).

Our agenda for May, with just a little June thrown in . . .



## MAY

**Wed 5th – Picture of the Year Competition.** The pick of our images judged by Kathy Chantler ARPS, she of the Imagez Camera Club Camera Club. The top scorings images from four rounds of this season's ladder competition, Kathy will be selecting the very best of the best.

**Wed 12th – I Shoot People.** Dave Mason takes great pleasure in finding the extraordinary in the ordinary, often documenting the surreal happenings on the city streets. His image preference? Honesty, captured with little, if any, post-processing. Will have great interest for those (like me) who embrace this genre.

**Wed 19th – Around the World in 80 Minutes,** Ian Bateman FRPS MPAGB AV-AFIAP APAGB. Welcome Ian, after six years, yes six! Ian returns to Blighty. He shares his brilliant AVCs of his many stops along the way.

**Wed 26th – Monochrome Digital Image Competition.** Colin Harrison 'revisits' us to judge this annual comp of this popular modern medium.



### TOWN TAVERN

Taken at Wallingford's BunkFest, a colourful celebration of music, dance and street entertainment. Held annually at the beginning of September 'pencilled in' this year for the 3/4/5th September. Lots to see and very photogenic – ME



### THATCHERS

The proof that good images are out there, can be found and spotted locally. Not only does this catch the skill of a tradition craft being carried out, but as the header shows, the beauty of the textures of the materials and tools – IWL

## JUNE

**Wed 2nd – Pics Wot I Like.** Dave and Angie Tucker EFIAP/DPAGB CPAGB BPE3 select their favourite images, from the FIAP gold medal awarded prints to the simple 'pics wot they like'.

**Wed 9th – AGM (zoom).** Our season is nearly at its end, we will hear end of term reports and we get to vote on what our next year will look like.

**Wed 16th – Seeing Opportunity.** Erica Oram CPAGB AFIAP BPE3 shares, her thoughts about making the most of a limited our 'photography time' by 'seeing' opportunities and being that little bit creative both in the camera and beyond.

Keep safe, take care WHCC.

Lyn Higgs





**REBECCA KINGWELL**  
FINANCIAL PLANNER

Comprehensive, bespoke, financial advice & planning



Rebecca Kingwell  
BSc (Hons), DipFA

Would you like to start making better provision for your future and retirement?

Do you need help understanding your existing pension arrangements?

I offer specialist advice on pension planning, investment planning, savings, tax efficiency and life and critical illness protection.



e: [rebecca.kingwell@sjpp.co.uk](mailto:rebecca.kingwell@sjpp.co.uk) t: 0330 053 6797

[www.rebeccakingwell.co.uk](http://www.rebeccakingwell.co.uk)

Oxfordshire · Berkshire

Rebecca Kingwell Financial Planner is an Appointed Representative of and represents only St. James's Place Wealth Management plc (which is authorised and regulated by the Financial Conduct Authority) for the purpose of advising solely on the Group's wealth management products and services, more details of which are set out on the Group's website at [www.sjp.co.uk/products](http://www.sjp.co.uk/products)



Successful people agree that time is their most **valuable** asset



**Personal Assistant Services**

Your Personal Assistant available 24/7

*This includes:*

- » Secretarial and administration
- » Accounts management
- » Concierge and travel arrangements
- » Event management
- » Protocol and etiquette
- » Virtual PA
- » Diary management



**Property and Estates**

Looking after your property so you don't have to

*This includes:*

- » Refurbishment and maintenance
- » Private house management
- » Research and advice
- » Land leasing management
- » Landscaping projects
- » Letting management
- » Vehicle management

**SERVICES TAILORED FOR YOU**

[www.http://obpo.co.uk/](http://www.http://obpo.co.uk/)  
+44 (0) 7768 108 392

**ALCOHOL COUNSELLING**

*Are you worried about your drinking or about the drinking of someone you love?  
If so, I can help.*

**QUALIFICATIONS:**

MSc in Addiction Psychology & Counselling from London South Bank University  
Member of the British Association of Counselling & Psychotherapy (BACP)

**PLEASE VISIT MY WEBSITE**  
[stewartkennedycounselling.com](http://stewartkennedycounselling.com)

Please call, text or email Stewart:  
07711 872 548 [stewartmkennedy@sky.com](mailto:stewartmkennedy@sky.com)



**andrea newill**  
GARDEN DESIGN

Beautifully designed gardens by  
experienced, qualified, local  
garden designer

Andrea Newill M5GD

[info@andreanewill.co.uk](mailto:info@andreanewill.co.uk) [www.andreanewill.co.uk](http://www.andreanewill.co.uk)

07901 856408 0118 9710450

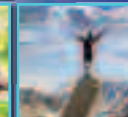


- Osteopathy & Cranial Osteopathy
- Podiatry & Chiropody
- Sports & Remedial Massage
- Acupuncture
- Reflexology
- Counselling - Adults & Adolescents
- Hypnotherapy & NLP
- Thai Yoga Massage
- Homeopathy
- Nutrition

Some of the conditions we treat at the Centre:

Back Pain Headaches Neck Pain Sports Injuries Foot Problems Sciatica  
Muscle Tension Whiplash Smoking Cessation Weight Control Stress  
& Phobias Dietary advice for IBS

Visit our website to see what else we can treat [www.thealewellbeingcentre.co.uk](http://www.thealewellbeingcentre.co.uk)



37 High Street, Theale,  
Reading RG7 5AH  
**0118 930 3535**  
[www.thealewellbeingcentre.co.uk](http://www.thealewellbeingcentre.co.uk)





**BRADFIELD TENNIS CENTRE**

# TENNIS MEMBERSHIP 2021

- Discounted rates on courts and courses
  - Advanced booking available
  - Entry to the Club Wimbledon Ballot





Email: [tennisinfo@bradfieldcollege.org.uk](mailto:tennisinfo@bradfieldcollege.org.uk) / Tennis Office: 0118 964 4603/4565




[@BradfieldTennis](https://www.instagram.com/BradfieldTennis)


[Visit us on ClubSpark](#)

**WE DON'T JUST COACH TENNIS WE LIVE IT!**



**BTL Emsella™**

## A breakthrough treatment for complete pelvic floor rehabilitation

Over 40% of women in the UK suffer from embarrassing "oops" moments, also known as urinary incontinence.

**Andresa** is the **FIRST** clinic in the south of the UK to offer **The BTL Emsella, a non-invasive, clinically proven solution.**

- 95% success rate
- Results in just 3 weeks
- Remain fully clothed and seated throughout
- Backed by science - FDA approved

**ANDRESA AESTHETICS**

If you would like to find out more about this unique, life-changing treatment or would like to book a complimentary and confidential consultation, call 01635 800183 | [info@andresa.co.uk](mailto:info@andresa.co.uk) | [www.andresa.co.uk](http://www.andresa.co.uk)

# PANGBOURNE VALLEY PLAYGROUP



## PANGBOURNE VALLEY PLAYGROUP

Pangbourne Valley Playgroup (PVPG) is a pre-school located within the grounds of Pangbourne Primary School, which offers many benefits; not least the close link with the school, which helps the smooth transition into full time education.

As a registered charity, PVPG belongs to the families that use it. Our staff and parents are committed to providing a fun, safe and nurturing learning environment.

We are open school hours, Monday to Thursday during term-time and work with a unique, child-centred approach, where children can learn and develop at their own pace within a happy atmosphere. To find out more, please contact us via email at [pvpq.enquiries@gmail.com](mailto:pvpq.enquiries@gmail.com) or call us during school hours on 0118 984 1661 to speak to one of the team and arrange a viewing.

### WE OFFER FREE CHILDCARE

PVPG offers childcare that is FREE to eligible 2, 3 and 4 year olds. This includes 15 hours FREE childcare for ALL 3 and 4 year olds, and 15 and 30 hours FREE childcare for eligible 2, 3 and 4 year olds. We have places available now!

### TRANSITION TO SCHOOL

PVPG works in conjunction with Pangbourne Primary school to pick up children that attend the nursery class (FS1) at 12 noon to allow for a longer day of childcare.

### FUNDRAISING

The Pangbourne Scarecrow Trail took place during the October half term and raised over £1000 for the playgroup. We wanted to get creative to ensure Halloween fun was had but at a safe distance. It was wonderful to see the community involvement and happy faces walking around. A massive thank you to Garlands, Little Labels and The Rhubarb Tree for selling maps and to Herald Graphics for printing them.

The online Christmas raffle raised over £500 with some incredible prizes in store. Thanks to all the local businesses and restaurants that donated prizes, we really couldn't have done this without your generosity.

For Easter we turn to our annual Duck Hunt. Hopefully you'll have seen the duck posters around the village and attempted our trivia quiz. Thanks to Garlands and Birch Bread for their support hosting and donating items for this event and we hope you and your families enjoyed the exercise and challenge.

We will also be hosting a POST LOCKDOWN VILLAGE SALE! Please donate small items including Household goods, books, bric a brac, children's clothing, collectables, ornaments, toys etc All proceeds of the sale will go toward supporting PVPG. Either drop off at 'Two Oaks' Bere Court Road, or contact Olwen on 0777 3747022 to arrange collection.

PVPG is registered with Easyfundraising. You'll find 1000's of



big name retailers like John Lewis, New Look, eBay and Tesco all ready to help us raise more for our charity. Simply go to [www.easyfundraising.org.uk](http://www.easyfundraising.org.uk) and search for Pangbourne Valley Playgroup, choose your favourite retailer and click the 'Shop Now' button.

Support us when you shop online with Amazon via [smile.amazon.co.uk](http://smile.amazon.co.uk). Register for Amazon Smile and



choose to support Pangbourne Valley Playgroup – we get a

donation every time you shop at no cost to you. You can even update the amazon app on your phone to activate smile, and have all eligible purchases raise money for PVPG automatically.

West Berkshire Lottery is local lottery supports good causes in West Berkshire and you can buy tickets to support us via their website giving you a 1/50 chance to win a prize each week with a top prize of £25,000! Tickets are only £1 and available via the link below [www.westberkshirelottery.co.uk/support/pangbourne-valley-playgroup](http://www.westberkshirelottery.co.uk/support/pangbourne-valley-playgroup)



We are delighted to announce that PVPG has been selected by Co-op as a local community cause this year! If you are a Co-op member, for every £1 you spend on selected Co-op products and services,

2p will go into your membership account and Co-op will give the same amount to support PVPG (you can also choose to donate your rewards). Please support us by choosing us as your nominated charity via your online account.

We're hoping to get any funds raised this year matched via the Good Exchange. If you would like to donate to the Playgroup, please do so via the following link: <https://app.thegoodexchange.com/project/18449/pangbourne-valley-playgroup/revenue-20-21>.



### COMMITTEE NEWS

If you have time and dedication to support our committee then we are always on the lookout for new members and would be keen to hear from anyone that might be able to help. Our virtual AGM took place in January and we would like to thank everyone that attended.

Best wishes and stay safe from the Pangbourne Valley Playgroup committee and staff. [www.PVPG.org.uk](http://www.PVPG.org.uk).





## FOPPS – FRIENDS OF PANGBOURNE PRIMARY SCHOOL



FOPPS (Friends of Pangbourne Primary School) is the PTA and charity which supports the children's education and experiences. During the coronavirus pandemic, FOPPS has continued to fundraise where we can, as the children will benefit from additional equipment, materials and experiences now that the school is back open.

Our top priority for this academic year continues to be the replacement of aging ICT equipment as well as a whole extra class's worth of new Chromebooks. Thanks to lockdown activities such as the "Pangbourne 10k Your Way" and online funding, we are now halfway through the process of replacing the entire school's interactive whiteboards.

Longer term, we are also putting funding aside to replace the playground equipment in the Foundation Stage area, and other activities and items to support the children's education and wellbeing.

We are a small, friendly group of volunteers who are always looking for new members and support. We do hope to return to events and in-person fundraising during 2021, but in the meantime even if you're not a parent or carer of a child at the school, we will benefit from local community support.

Here are three ways the Pangbourne community can help:

### 1. West Berkshire Lottery – Drive For Support!

West Berkshire Lottery is an exciting weekly lottery that raises money for good causes in West Berkshire – and FOPPS is now registered as one of the causes. If you would like the chance of winning up to £25,000 AND supporting FOPPS, all you need to do is go to the site below and purchase a ticket.



[www.westberkshirelottery.co.uk/support/fopps](http://www.westberkshirelottery.co.uk/support/fopps)

West Berkshire Lottery also has grants available for any charity which buys more than ten tickets over a period of ten weeks, so please do get involved, because a potential win for you is also a win for FOPPS!

### 2. Reduce! Reuse! Recycle for FOPPS!

Lockdown may well have prompted you to have a clearout. We do have a textile recycling bin just inside the school playground, so if you need to dispose of old clothes, shoes or other textiles please do drop your things into school.

In addition, if you are a parent or carer with children at the school, we offer a second-hand uniform service. We have a wide range of school uniform available at only £1 per item. To donate, please bring in clean uniform to add to our collection. To buy, just get in touch with school reception who will connect you with our volunteers and arrange for you to pick up what you need.

### 3. Online Shopping to Support your Local Charity

If you shop online at Amazon, you can now also help to raise funds for FOPPS. Next time you log on, navigate to [smile.amazon.co.uk](http://smile.amazon.co.uk) and choose to support Friends Of Pangbourne Primary School (FOPPS). AmazonSmile is a simple and automatic way for you to support a charity of your choice every time you shop, at no cost to you. When you shop at [smile.amazon.co.uk](http://smile.amazon.co.uk), you'll find the exact same price and products, with the added bonus that Amazon will donate a .05% of the net purchase price to FOPPS.



*If you would like more information, or would like to get involved, help or donate to your local primary school during these challenging times please contact us at [info@fopps.org.uk](mailto:info@fopps.org.uk).*

**Will your child be three before 31<sup>st</sup> August 2021?**

- At Pangbourne Primary School we have places available for three-year olds, five mornings a week from September
- We can offer a safe and stimulating environment with experienced teachers and practitioners where your child will be nurtured and encouraged to learn new skills
- Children enjoy a wide range of learning opportunities inside and outside which develop their independence and resilience and prepare them for full time education

Information and application forms available from:  
[office.pangbourne@w-berks.sch.uk](mailto:office.pangbourne@w-berks.sch.uk)  
To arrange a visit, please call 01189 842315



# Treating you like family from one generation to the next.

In a good way, of course...

## **We make buying, selling and letting easy for you.**

People come to us because they know we always do the right thing.

Because we get results and are always there when they need us.

And, most of all, because we always treat them like family...

## **Family values go such a long way...**

For more than 70 years, we've been treating people like one of our own – in Reading, Tilehurst, Pangbourne and beyond.

You'll find us friendly, knowledgeable, professional – and here for you.

With Patrick Williams, you're family.  
Give us a call and find out for yourself.

Reading: 0118 957 3579  
Tilehurst: 0118 942 0777  
Pangbourne: 0118 984 4444  
[info@patrickwilliams.co.uk](mailto:info@patrickwilliams.co.uk)



[www.patrickwilliams.co.uk](http://www.patrickwilliams.co.uk)

## PANGBOURNE COLLEGE WELCOMES BACK PUPILS

We were delighted to welcome back pupils from the 8 March. The atmosphere within the College has been full of enthusiasm and positivity!



## PANGBOURNE CELEBRATES 'OLD PANGBOURNIANS' ON INTERNATIONAL WOMEN'S DAY 2021

To mark International Women's Day on 8 March, we decided to shine a light on some of our female alumni who are affectionately known as 'Old Pangbournians' (OPs).



*Jess Brown, OP*

We started with Jess Brown, who updated us on her PhD at the EPSRC Centre for Doctoral Training in Metamaterials, part of the Centre for Metamaterial Research and Innovation. We followed this with an interview with Jess Payne, a Senior Registrar at the Royal London Hospital, who spoke about her career and the challenges of being a doctor during the pandemic.

Charlotte Butterworth is on the Board of Governors for Pangbourne College. Since leaving Pangbourne she has served in the Royal Navy and is now a successful lawyer. Charlotte was interviewed by our Chief Cadet Captain, Elise, where she spoke about how Pangbourne prepared her for the future.

Georgia Francis is an OP who has gone on to achieve great success rowing for Great Britain. She was interviewed by Richard Follett, Director of Rowing last year, but we felt that International Women's Day was a great opportunity to remind ourselves of her achievements. You can watch these interviews on our YouTube channel.

## PROFESSIONAL HOCKEY PLAYER JOINS THE COACHING TEAM

We are delighted to welcome Great Britain and England Hockey Elite Development Squad player Holly Hunt to our Hockey Coaching Team. Holly officially joined the coaching team in January, however due to lockdown she has had to wait until the return to College to commence her coaching programme. Her focus will be on coaching Girls Hockey across all ages.

Holly explains, "It's been fantastic to finally get out onto the astro pitch with the students. I've been really impressed with their attitude, especially after such a long period away. They are eager to get stuck back into the game and that's fantastic to see. Pangbourne certainly has some talented young players and I look forward to harnessing their passion for the sport."

Director of Sport, Mr Sam Hewick said, "We're delighted to have someone of Holly's calibre joining the coaching team. Her wealth of experience playing top level Hockey will be a huge asset to Pangbourne students, enabling them to develop their game further."



*Holly Hunt joins Pangbourne as a hockey coach.*

## PEER MENTORING PROGRAMME RECOMMENCES

Peer mentoring is an integral part of the College's pastoral care system and many Old Pangbournians can testify to its value in later life, including at university where it is highly prized on a UCAS application.



*Mrs Caroline Bond runs the Peer Mentoring programme.*

The Lower Sixth is divided into groups and given an opportunity in the Lent Term to take part in a six session course. Participation is voluntary, but the majority of students will complete it.

Mrs Caroline Bond, Deputy Head Pastoral, who runs the course said, 'One of the hallmarks of the Pangbourne community is the way in which Sixth Form pupils look out for those in younger years. Peer mentoring training is one of the means of helping them do this effectively and sensitively.'

'It is part of the school's overall strategy to equip our young people with the skills to lead in an emotionally intelligent way. Many of those who complete the course are also working towards their Duke of Edinburgh's Gold Award and this is part of their volunteering section.'

A . B .  
**WALKER**  
 THE FUNERAL PEOPLE

**A FAMILY BUSINESS SINCE 1826**  
 THATCHAM – 01635 873672  
 TILEHURST – 0118 304 0068  
 READING – 0118 957 3650

ALSO AT BRACKNELL, CAVERSHAM,  
 HENLEY, MAIDENHEAD, WOKINGHAM.

TRADITIONAL AND CONTEMPORARY  
 FUNERAL SERVICE AND DIRECT CREMATION  
 FLORAL DESIGN AND MONUMENTAL MASONRY  
 PRE-PAID FUNERALS, LATER LIFE LEGAL SERVICES  
 BEREAVEMENT CARE



**Golden Charter**  
 Funeral Plans

**W**  
 WWW.ABWALKER.CO.UK



**Perfect Boundary Limited**



**Hard Landscaping and Design.**

*Professional Service. Call for a Quotation.*

Email [Info@perfectboundarylimited.co.uk](mailto:Info@perfectboundarylimited.co.uk)  
[www.perfectboundarylimited.co.uk](http://www.perfectboundarylimited.co.uk)  
 Tel: 01189 968 009 Mob: 07796 202217



- Tree Surgery
- Tree Felling
- Hedge Cutting
- Logs
- Fencing
- Fully Insured
- Fully Qualified
- Free Quotations
- 24 Hour Callouts
- Competitive Prices



**01488 647204 07979 507 195**  
[robfox@foxestreeservices.co.uk](mailto:robfox@foxestreeservices.co.uk)  
[www.foxestreesurgery.com](http://www.foxestreesurgery.com)  
 Local business based in Newbury



Hedge Cutting

Fencing

Plant Hire

Obstructive Trees

Complete Tree Care

Stump Grinding

Stump Grinding

Stump Grinding

Stump Grinding



## J A M Upholstery

Traditional Antique & Modern Upholstery  
 & Re-covering

Seat feeling soft and saggy?  
 Arms need firming up?  
 Lumbar lacking support?

Jenny can give your favourite chair the love and  
 attention needed to get it back in shape,  
 or simply give it a new look in a new fabric.

[www.jamupholstery.co.uk](http://www.jamupholstery.co.uk)

[jenny@jamupholstery.co.uk](mailto:jenny@jamupholstery.co.uk) 07976 443972  
 Based in Lower Basildon

## Coombe House

RESIDENTIAL CARE

- Retirement home in Streatley on Thames • 24 hour care and support by well qualified staff
  - Elegant, homely and relaxed country house in attractive grounds
  - Peace, privacy and independence in caring surroundings
  - Serving the local community for over 30 years



**01491 872174** [www.coombehouse.co.uk](http://www.coombehouse.co.uk) [enquiries@coombehouse.co.uk](mailto:enquiries@coombehouse.co.uk)







Offering quality tree care  
from a family run firm

40 years experience in  
planting, pruning and removal

Free estimates and advice

Contact Stewart Bee on

**0118 9595 222**

**07976 611128**

**beetreeservices@tiscali.co.uk**

*Seasoned firewood always available*

Unit 12,  
Manor Farm,  
Peppard Common,  
RG9 5LA



### **YOUR LOCAL GLASS AND GLAZING COMPANY**

- All types of glass cut to size
- Mirrors, shelves and table tops
- Greenhouse glass and picture glass
- Full glazing service, trade and domestic
- Broken windows and shopfront glass replaced
  - Traditional leadlights repaired
  - Broken and misted double glazed sealed units replaced
- UPVC, aluminium and hardwood windows, doors and conservatories
  - Delivery service

**CALL FOR ADVICE AND FREE QUOTATION**

**01491 629901**



15 years guarantee  
on all high performance felts  
also

Tiling and Lead Repairs

Phone Bradfield

**0118 9744701 or**

**07880 930 958**

Email: **eddylaming@hotmail.co.uk**

*38 years experience*



### **NEIL HOULDEY** *Quality Painting and Decorating*

- All types of interior and exterior work completed
- Advanced City & Guilds qualified
- General maintenance and repairs undertaken
- Gold CSCS card accreditation
  - 30 years experience
  - Fully insured
- Pangbourne and surrounding areas

**07731 476100 • 0118 9845532**

**neil.houldey@yahoo.com**

**www.neilhouldeyqualitypaintinganddecorating.com**

# PANGBOURNE PLACE-NAMES

---

## PANGBOURNE VILLAGE MARKET

The history of Pangbourne Village Market and the Village Hall where it is now held is very closely linked, and I am grateful to a significant number of people for helping me with the interconnections. I understand that the history of the Village Hall will probably be covered in a future article by the Heritage Group.

The **Village Market** started in about 1978. It was held in what was then called the Church Hall, on the site of the present Village Hall, and was called the **WI Market**. It was one of a number of markets founded at the time and sponsored by the Women's Institute (WI) in villages in which the WI was thriving. The WI allowed these local village markets to use its name, reputation for very high standards and insurance, as well as the compulsory use of its auditors. In return it took an increasingly critical interest in proceedings, together with a percentage of gross takings which was passed to the WI headquarters at Leamington Spa. As our market was the most successful in Berkshire, this amounted one year to £1,500, and over the years, relations became increasingly fraught.

The Church sold the Hall to the Parish in 1987, when it was renamed the **Village Hall**. It was enlarged in 2000, so the WI Market moved to the Working Men's Club. In 2004 it returned to the extended Village Hall, and in 2006 Pangbourne market was one of the first to sever its connection with the WI, becoming the **Village Market**. Then as now, it is a very successful cooperative venture, priding itself on being a non-profit organisation. All stallholders are individuals, taking responsibility for their own goods but sharing any costs, such as the rent of the hall and the upkeep of the tables. Space at the market is not sold, but there is an active replacement system, to maintain a balanced range of stalls, with 'guest producers' by invitation. In the best traditions reaching back in a simplified form to late Anglo-Saxon times, it is an excellent venue to buy locally produced fresh fruit, vegetables and cakes, etc, and it also provides a weekly 'social event' in its café area for local residents.

The actual origin of markets in Berkshire is obscure, with few recorded before the late 12th century. A network of local markets probably existed earlier, reflecting late Anglo-Saxon society, which at commoner level lived mainly in small village communities. In these circumstances village markets may have started as informal trading in churchyards on Sundays when customers would have been readily to hand – not dissimilar to informal trading in 2021 on a Friday morning in a building constructed on land previously owned by the church.

The words that have come down to us from this period reflect the small scale of these operations. Our modern 'jolly good chap' shows a shortened form of an occupation name recalled at **Chapman's Farm**, Eye and Dunsden, the man concerned being a 'trader or dealer'. The word derives from Old English *ceap* (pronounced *cheap*), a word borrowed from the Romans whilst the Anglo-Saxons were still on the Continent. It derives from the Latin word *caupo*, a 'small trader', with *ceap* having the flavour of bargaining and being 'good value'. The word developed the sense of where these small traders operated, and regularly appears as 'market', for example in the Newbury and Thatcham street-names **Cheap Street**, and at **Cheapside**, Sunninghill and London.

A second word in this category is *mangere*, giving our Modern English –monger, again deriving via Anglo-Saxon from Latin. Over time it has become more specialised, giving trades like 'fishmonger', as well as Pangbourne's very own and excellent 'ironmonger' and 'cheesemonger', but also, alas, the less desirable activities of 'scandal-monger' and 'whore-monger'. These more accurately reflect the probable Latin derivation, from a Greek word which has a slightly dubious flavour to it.

With the arrival of the Normans after 1066 the linguistic associations of *ceap* took a turn for the worse. The Normans introduced their own word, ultimately from Latin *mercatus*, which has given us 'merchant' and 'market'. The Norman 'market trader' was altogether grander, handling more exotic and refined goods, and definitely trumping a 'small trader'. Over time, *ceap* came to mean 'poor quality' rather than 'good value', and a chapman was to become little more than a pedlar, possibly reflected in the pathway recorded as early as 1250 in the now lost *Chepmanspath*, Ipsden.

The Domesday Book of 1086 lists only 50 markets nationwide, but in the 13th century their number increased markedly. Each market required a royal charter, with over 2,000 granted 1200-1270, but then the king began to exercise more control. Landlords, aware of the profits to be made from markets on their land, sought franchises from the Crown, and by 1300 almost nowhere in England was more than eight miles from a market. Many were set up on a relatively small scale in villages that were seeking to expand, with much of the trade being in goods needed by the local peasants. As well as travelling chapmen, the vendors at these markets might have included both peasants supplementing a poor living from the land by selling the product of some craft or skill, and landlords disposing of surplus crops. However,



*A medieval village fair.*

# PANGBOURNE PLACE-NAMES

over time many of these small-scale markets proved unable to sustain the commerce necessary for their survival, especially after the 14th century famines and the plague of 1348 – shades of the retail sector and Covid today. For example, **Basildon** is known to have had a weekly market in 1309, chartered “To be held at the manor”, and probably serving the area between Pangbourne and Moulsoford, as well as nearby villages in the Berkshire Downs. **Yattendon** is recorded as having one in 1258, and in a document 350 years later, in 1591, **Westchepe**, Bucklebury, ‘west market’, implies at least folk memory of trading activity there.

If a town held a market, it probably also held a fair. Whereas holding a market was a weekly opportunity to obtain fresh produce and necessities, a fair was the annual chance to buy more high value goods and non-perishables. Fairs were the great gatherings of medieval England, and normally lasted three days, the day before a saint’s day, the actual day and the day after. They were usually held between July and September, with **Basildon’s** over the feast of St Barnabas in June. At the fair on the feast of St Audrey at Ely, in the Fens, cheap jewellery and showy lace called ‘St Audrey’s lace’ was sold, a contraction of the title giving us the word ‘tawdry’.

In later centuries, when the association with the saints was less pronounced, the month was emphasised, as at **Mayfair**, Tilehurst, and its better known namesake in London. It is difficult to imagine today that until the end of the 17th century the London **Mayfair** was open land, with a fair held there in the first week in May during the reign of Charles II (1660-1685). However, building had already begun in the area by 1704 – and *Monopoly* players will claim that it still continues.

Markets were held within towns, but fairs were mainly on open land outside. Names like **Cow Fair Close** and **Horse Fair Close**, both recorded in Newbury in the 19th century, surely indicate why this was desirable, and Lambourn, which obtained its charter for a fair in 1219, still has **Fair Ground** on its outskirts.

In any case, space was required, because, for the crowds to be attracted, entertainment was needed. This might have included musicians and acrobats, as well as contests such as wrestling, archery and jousting.



Part of *Monopoly* board, with 1930s prices.  
An average *Mayfair* house in 2019 was £6,041,659.



Cudgel.

One of the contests at the Basildon Fair in 1802 advertised by the *Reading Mercury* was cudgels. A cudgel was a short, thick stick used as a weapon, especially by nightwatchmen. It could also have vicious implications, being a particularly nasty form of country ‘sport’ where men beat each other about the head. The notice states:

“... a Gold Laced Hat of 27s [about £115 at today’s values] value to be played at Cudgels for the man that breaks most heads to have the hat, the blood to run an inch or no head to be given. Two shillings [about £9] will be given for the first ten heads.” Serious money was there for the winning, but at a price... Any volunteers to ‘take up the cudgels’?

Towns which obtained licences to hold markets, with the increased prosperity and status that they would bring, were pleased to proclaim the fact, in a variety of ways. **Harborough**, Leicestershire, became **Market Harborough** shortly after the grant of its licence in 1203. A derivative from *ceap* produced **Chipping Norton**, *Cepingnorthona* in 1224, and **Chipping Campden**, *Ceping Campedene* in 1315, as well as **Chepstow**, Monmouthshire, which is simply ‘place (-stow) of the market’.

The name -port, when it appears away from the coast, often refers to a market, as at **Newport Pagnell**, Bucks. Despite it being by the sea, **Gosport**, Hants, was particularly associated with the sale of geese, and such a medieval goose fair is still re-enacted each year at Colyford, Devon.

The Latin word for ‘market’ is *forum*, surviving most obviously in **Blandford Forum**, Dorset. There, in medieval documents the word is regularly interchangeable with *ceping*, giving *Ceping Blanford* in 1288. **Newmarket**, Suffolk, is first recorded in 1200 as *Novum Forum*, ‘new market’, and as such it shares more than just a racecourse with another great centre of the horse racing industry: **Newbury** is also the ‘new market’, founded in about 1080 when it is recorded as *Neuberie*, showing the element ‘-bury’ in one of its many meanings.

The general idea of our Village Market has its origins more than 900 years ago. In the 21st century it continues to be an important feature of our community, with its stallholders determined not to cease trading, in spite of Covid. Unfortunately they are currently denied the use of the Village Hall because of work required following a burst pipe, but they expect to return once this is completed.

Nigel Suffield-Jones



Colyford Goose Fair.



**JCN BUILDERS**  
**BUILDING, CARPENTRY AND HOME IMPROVEMENT SPECIALISTS**  
**ALL WORK GUARANTEED**  
 OVER 15 YEARS EXPERIENCE

- EXTENSIONS
- ALTERATIONS
- RENOVATIONS
- EXTERNAL DECOR
- CONVERSIONS
- KITCHENS/BATHROOMS
- PATIOS/DRIVES
- LISTED BUILDING WORKS

**ALL ASPECTS OF BUILDING WORK UNDERTAKEN**  
**FULLY INSURED • REFERENCES AVAILABLE**

**0118 9845959 0791 7095379**

**DRAIN & ABLE**  
 Independent Drainage Service  
**24/7 EMERGENCY SERVICE**  
**GUARANTEED ARRIVAL**  
**ALL TELEPHONE CALLS ANSWERED PERSONALLY**  
 Call anytime on 0118 957 6244/  
 07795 598207  
**www.drainandable.co.uk**

**HIGHLY RECOMMENDED**

**ATB Accounting**  
 Old Breedon School, 8-10 Reading Road,  
 Pangbourne RG8 7LY  
**0118 405 6000**

**Services include:**

Bookkeeping ..... from £18 p/h  
 Ltd Co. Accounts ..... from £700 p/a  
 VAT Returns ..... from £100 p/a  
 Self Assessments ..... from £70 p/a

(ALL PRICES EXCLUDING VAT)

**For a free quotation:**  
 Call us on **0118 405 6000**,  
 or call in – no appointment necessary,  
 or email: **charles@atbaccounting.co.uk**

**CIG.**

Chiltern Insurance Group  
 Pangbourne

Business and Personal Insurance  
 from your Local Broker

**Call 0118 984 3355**

[www.chilterninsurance.co.uk](http://www.chilterninsurance.co.uk)

St James House, Church Road,  
 Pangbourne, RG8 7AR

Chiltern Insurance Consultants Ltd are authorised and regulated by the Financial Conduct Authority for General Insurance Business.

**LOCKSMITH** **ACG SERVICES**

Locks changed, fitted, repaired & opened.  
 Yale locks, five lever mortice locks, digital locks,  
 UPVC door locks & handles, UPVC window locks.

**Emergency callout service**

Over thirty years of experience. Free quotations  
 Tel: **01491 682050** or **07710 409216**  
**www.acgservices.co.uk**

Office: 3 Wayside Green, Woodcote, Oxon RG8 0PR. Proprietor Richard Homden

**DO YOU NEED A WILL OR LASTING POWER OF ATTORNEY?**

If so contact **Chris Lawn**, a solicitor working locally,  
 on **07843 679 239** or email **chris@jonathanlea.net**

Chris will visit you at your home.  
 Appointments last approximately 1 hour and  
 can be held during the day, evening or weekend.

*Hillhampton Wills is now incorporated into  
 Jonathan Lea Network Solicitors.*

For further information visit **www.chrislawn.com**



*"Lafford & Leavey, experts in  
bringing the outside - inside"*

## **Windows - Doors - Conservatories UPVC or Timber**

One of the leading window, door and conservatory installers in Berkshire, offering free quotations and advice from a company with a formidable reputation spanning 50 years. Choose from a wide range of products in a style and finish which will suit your budget and needs, we are only a phone call away.



## **LAFFORD & LEAVEY LTD**

ARROWHEAD ROAD, THEALE, READING, RG7 4AZ

Tel: Reading (0118) 9303333 Fax: (0118) 9323707

Email: [info@laffordandleavey.co.uk](mailto:info@laffordandleavey.co.uk)





## TREE FELLING AT MOOR COPSE

Moor Copse is a BBOWT managed nature reserve that forms part of the Sulham and Tidmarsh Woods and Meadows Site of Special Scientific Interest (SSSI). Fringing the beautiful River Pang, this ancient woodland is a place of character, variety and great beauty. The wetter parts of the woodland are dominated by alder and willows, with the drier parts of the site, traditionally managed as coppice woodland, are comprised of hazel understorey with ash and oak standards. At Moor Copse, and more generally throughout Berkshire, we have seen a rapid advance in the spread of ash dieback (*Chalara*) with many of our nature reserves now having trees with quite advanced stages of the fungal disease.

Ash dieback was first noted in Berkshire in 2012 and since then has spread rapidly across the country. The fungal disease is spread over 10's of miles by windblown spores and so there has been no way in halting its spread.

The disease causes dieback in the crown of the tree and is usually fatal. The early signs of dieback in the crown of the tree means it is unable to put on the late hardwood growth which is essential to maintain its structural integrity. This means that trees with ash dieback have a high level of weakness in the canopy which in turn means that they are very susceptible to shedding large limbs. The disease also makes trees more prone to attack from secondary pathogens such as honey fungus which rots the core wood and roots of the tree and makes them extremely unstable.

This winter at Moor Copse, BBOWT started a programme of removing disease infected trees that have been highlighted as requiring work by our annual tree safety inspection. Only trees that pose a threat to users of the nature reserve and adjacent roads were assessed for the disease. Many trees in areas where there is no risk to the public, are being left to die naturally and provide important habitat for wildlife. Where possible, we have opted to close a number of permissive footpaths that run through copses with especially high numbers of ash suffering from the disease.

Due to the high amount of affected ash at Moor Copse we are want to carry out works over a number of years. As many people would have noticed, this winter we started this works focusing along the reserves boundary with the A340, in addition to some additional high-risk trees along the footpath network. Timber has been extracted where possible, with stacks being positioned outside of any flooded areas.

Some of the works we are carrying out may seem extreme. However, the loss of ash will provide an opportunity to improve the woodland structure, and create open space and diversify tree species composition, in addition to creating a short-term increase in the dead wood resource that provides an important habitat for groups such as fungi and invertebrates. There will also be an increase in scrub as areas under felled ash regenerate and this should benefit species such as dormice and woodland birds.

In these areas there will be a profusion of woodland specialist flora such as bluebells, primroses and wood anemone. An extensive network of rides will also help to provide sunlit strips within the heart of the woodland, so promoting the growth of woodland flowers. Supported by the abundance of flora within both the rides and coppice areas, Moor Copse will have a diverse butterfly population including woodland specialists such as the silver washed fritillary. The woodland areas will also support a range of woodland birds such as song thrush and great and green woodpecker.

If you would like to find out more please visit our website <https://www.bbowt.org.uk/nature-reserves/moor-copse> or contact Tom Hayward on [tomhayward@bbowt.org.uk](mailto:tomhayward@bbowt.org.uk).

**Berkshire  
Buckinghamshire  
Oxfordshire**





## PANGBOURNE AND WHITCHURCH SUSTAINABILITY NEWS



Last April I wrote the PAWS article during unseasonably warm weather which at least helped us endure the restrictions of our first pandemic lockdown. This year we are slowly emerging out of our third lockdown and rejoicing in the vaccination promise to reduce the spread of COVID 19, but experiencing unusually low temperatures causing problems for farmers and all vegetable growers.

From the first humans to cultivate land to our modern day farmers the power of the weather to bring success or disaster has been anxiously accepted as being at the core of human survival. In more recent history the impact of our dependence on fossil fuels has led to measurable climate change which is already affecting many parts of the world and is indeed being felt by many in this country as they try to recover from the effects of flooding experienced in the last few years. The severe flooding in Australia has had an effect on other animal species as seen in this report published in *The Week* at the beginning of April:

“Millions of people hit by southeast Australia’s worst floods for decades now face an onslaught of snakes, mosquitoes and spiders. The floods, which covered an area nearly seven times the size of the UK, displaced tens of thousands of people and also led to the flight of animals to higher ground. Spiders and snakes were seen swarming up and into buildings, and now the receding waters are providing ideal breeding conditions for mosquitoes and ticks. At the same time, farmers and householders are dealing with a ‘monumental’ plague of house mice.”

Climate Change events are a reality, and bring with them heartache and misery, and we all know that we have to act at every level to slow down the rate of global warming whilst we convert our energy supplies to renewable ones. We know we need to keep our carbon emissions to under the threshold of 2°C identified by scientists as being the safe maximum level of global heating that is consonant with the survival of our current form of civilisation. In his book, *Face up to Climate Change*, former chair of PAWS, Peter McManners sets out to explore how we can achieve this.

BUT we also recognise from the disappointment over the government’s recent removal of the Green Homes initiative that a piece-meal approach to carbon reduction is simply not going to be enough to keep us under 2°C and enable us to reach our target of being carbon neutral by 2050. At a government level we need joined up thinking to initiate, manage, sustain and support the changes needed to attain the desired goal.

At a local level PAWS is actively engaged in helping us to decrease our carbon footprint. You will see from the report of the cycling group that work to provide increased facilities for cyclists is already under way, note the new bicycle racks in Pangbourne, and that West Berkshire is wanting to hear from us our thoughts

on improving and growing a safe cycling environment. See the report from Barbara Singleton-Crisp:

Many thanks to all who completed the PAWS Cycling Questionnaire we wrote about in the last issue of the magazine. It’s been great to have such an excellent response. Thank you also to local businesses and schools for helping spread the word. The closing date was the 18th April, and we had 136 returns at the last count. We have already begun talks with the council and they have provided additional cycle racks near the Meadow Playground. If you need a space pop down there! We will be analysing the results over the next month or so and will provide feedback and also liaise with other bodies who we hope can help bring results.

In addition West Berkshire Council’s platform for active travel is now up and running – see the Active Travel Heat Map on page 40.

### NEWS FROM THE TIP!

Padworth Recycling Centre is now accepting some plastic Pots, Tubs and Trays which we are unable to put into the doorstep collection. But it is very much a case of **use it or lose it**. See more information on page 41.

### ZOOM EVENTS

During the past two months PAWS has delivered two zoom events. In February, Jo Morris, global advisor to the clothing industry gave an absorbing and well-illustrated talk about FAIRWEAR, an organisation that works with garment brands, garment workers and industry influencers to improve labour conditions in garment factories.

### Why is what we wear such an important environmental issue?

The fashion industry is highly complex and difficult to regulate because of its global supply chain. There are 75 million apparel workers world-wide, eight out of ten are women aged between 18-24 who are often regarded as a disposable work force. These workers are providing the 100 billion garments made last year for the fashion industry. It is estimated that the average person now buys 60% more clothing than they did in the year 2000. The complexity of production means that a single blouse may travel between eight different countries during production consuming vast amounts of energy through transport, packaging etc. That blouse/T-shirt may also have required 2700 litres of water in its production. Water requires energy to distribute it to the right place as well as being a scarce commodity in many countries. (2700 litres of water equates to two and a half years of water supply for one person.)

The global fashion industry is set to triple its 2015 carbon emission rating by 2050! This is the result of the fast fashion movement, coupled with poor labour regulation where in countries like Bangladesh whose economy is dependent on the clothing industry many people need jobs in the industry despite its poor pay and in many places appalling working conditions. In the UK the recent scandal of poor working conditions for clothing manufacturing employees has highlighted the depth of the problem.

**Reduce, Reuse, Recycle** are the words of the sustainability movement, and they are most applicable to how we can responsibly reduce our carbon emissions generated through the fashion industry.

## FILM: Dancing Grass

Our second PAWs event featured the film, *Dancing Grass Harvesting Teff in the Tigrean Highlands, Ethiopia* (2018) by Mitiku Gabrehiwot. Teff, the staple grain of the area is made into injera, a fermented bread eaten at most meals in Ethiopia. Barbara and John, members of PAWs who have lived and worked in Ethiopia for several years introduced the film and updated us with the terrible events taking place in Tigray at this moment.

The slow moving film of a traditional manual harvesting method reflects the relationship of man with the earth and the sense of community as they all laboured at different parts of the production and



cooking of the grain. This was a homage to pre-industrial methods of food production, a slow way of life and a respect for nature in its ability to provide sustainable food. A moving film to see with the knowledge that this year the harvest will not be gathered in because of the extreme violence that is occurring in the Tigrean area.

As Peter McManners' book pushes us to face up to climate change we know that we must also face up to the destructive forces of power politics worldwide which prevents the joined-up thinking and action needed to bring about global change.

Heather Thorne

## HAVE YOUR SAY ON THE WEST BERKSHIRE ACTIVE TRAVEL HEAT MAP

Help WBC identify suitable locations in our neighbourhood to create more accessible streets for active travel, including better public spaces, secure cycle parking and provide high quality environments suitable for cycling and walking. Your feedback will help WBC plan effectively, when budgets become available, and make improvements that are most important to you.

**This Heat Map is open for initial comments until Friday, 2 July 2021.**

<https://westberksactivestreets.commonplace.is/proposals/have-your-say-on-the-west-berkshire-active-travel-heat-map>

## RECYCLING PLASTIC POTS, TUBS AND TRAYS

West Berkshire Council is trialling a new recycling bank at Padworth Recycling Centre for plastic pots, tubs and trays.

### THIS INCLUDES:

- yoghurt pots
- cream pots
- butter/margarine tubs
- plastic food trays, eg takeaway trays, ready meal trays
- tubs from chocolate, sweets, biscuits, crackers
- biscuit tray packaging
- clear fruit punnets
- clear meat trays
- cosmetic pots, eg face cream pots
- plastic lids (bottle tops, plastic lids etc)

Please make sure your plastic pots, tubs and trays are washed and lids/film are removed before recycling. Items should be put into the recycling banks loose and not in plastic bags.

### ITEMS NOT ACCEPTED ARE:

- black plastic trays
- plastic film
- crisp packets
- plastic wrapping
- foil lids

The Council will: “assess **how well residents continue to engage with this new scheme and will actively monitor the quality of materials** and the amount of contamination and non-target materials being presented in these banks. Other measures of success include increased awareness of recycling opportunities within the Council and continued availability of markets for these additional plastic types in the UK (and Europe). The effectiveness of the trial will be evaluated after six months and a decision will be taken on whether or not to continue with the scheme.”

You can find out more on [info.westberks.gov.uk/recyclingPTT](http://info.westberks.gov.uk/recyclingPTT)

## 2021/22 PAWS CALENDAR

WHEN	WHAT	WHERE
Thursday 20 May 8pm start	PAWS AGM, including a talk and discussion: Peter McManners discusses his new book: <i>Face up to Climate Change: Demand Change Now</i>	Over Zoom
Thursday 17 June 8pm start	Talk and discussion: <i>Is meat production really destroying the planet?</i>	Over Zoom / Pangbourne Village Hall if poss
Sunday 18 July 2pm start	Join with WoTHabs for a Meadow Biodiversity Walk led by James Norman The meeting point will be signposted on the day	Meet at the field entrance on the left-hand side of Sheepwash Lane, Hardwick Estate
Sunday 26 September 2pm – 4pm	Apple Pressing Day	Whitchurch Maze, Muddy Lane Whitchurch on Thames
Saturday 16 October 10-12.30pm	Launch of PAWS COP26 Tree Campaign	Outside Garlands
Thursday 21 October 8pm start	Talk and discussion: <i>Trees: their role in biodiversity and climate action</i>	Pangbourne Village Hall
Thursday 18 November 8pm start	Film Night	Pangbourne Village Hall
Thursday 16th December 8pm – 10pm	Christmas Gathering: a celebration of 10+1 years of PAWS! Potluck supper; all welcome	Pangbourne Village Hall
Thursday 13th January 8pm – 10pm	PAWS 2022 Planning Meeting	Pangbourne Village Hall

Visit our website [www.pawsg.com](http://www.pawsg.com)  
and join our Facebook group: PAWS (Pangbourne & Whitchurch Sustainability)



---

# neville & turner

Village & Country Property Agents

## *Thinking of selling or letting?*

*Whether you require specific valuation and marketing advice or wish to discuss general property matters and requirements, please call us - we are here to help.*

T: 0118 984 1841 E: [post@neville-turner.co.uk](mailto:post@neville-turner.co.uk)

A: 2 High Street, Pangbourne, Berkshire RG8 7AB

W: [www.neville-turner.co.uk](http://www.neville-turner.co.uk)

## STANROD MOTORS 2

**is happy to collect and deliver your car  
for all your MOT and servicing needs**

**Call Steve or Sean  
at STANROD MOTORS 2  
today on 0118 976 7686**

Open 8am-6pm Mon-Fri • 8am-Noon Sat  
14 Station Road, Pangbourne, Reading RG8 7AN  
[email: info@stanrodmotors2.com](mailto:info@stanrodmotors2.com)



## SPB STONEWORKS LTD



Tel: 01189371827 or 07971881504

Visit us @ [www.spbstoneworks.co.uk](http://www.spbstoneworks.co.uk)

Email: [simonbeale@spbstoneworks.co.uk](mailto:simonbeale@spbstoneworks.co.uk) or [admin@spbstoneworks.co.uk](mailto:admin@spbstoneworks.co.uk)

Special offers on all types on memorials from Headstone, Full memorials, Cremation stones, Childrens memorials & Vases  
FREE NO OBLIGATION QUOTES and FREE FULL COLOUR BROCHURE ON REQUEST



- MONUMENTAL STONE MASONS.
- SUPPLYING ALL TYPES OF MEMORIALS & HEADSTONES
- 30 YEAR GUARANTEE ON ALL NEW & REPAIR WORK
  - MEMBERS OF BRAMM, NAMM, AND THE GUILD OF MASTER CRAFTSMEN
- RENOVATIONS & CLEANING OF EXISTING MEMORIALS
  - ADDITIONAL INSCRIPTIONS ALL STYLES
  - REPAIRS & RE-LEVELLING
- FAST & FRIENDLY FAMILY RUN COMPANY



**Up to 70% Cheaper than Funeral directors  
with 100% Guarantee to beat any memorial quote**

Showroom by appointment

Unit 3 Old Mill Trading Estate, 61 Reading Road, Pangbourne RG8 7HY



EST 2001



### COUNTRY ROOFING — SUPPLIES —

*All you need under one roof*

Visit us at  
Timbers Farm, Henley-on-Thames RG9 5SY

Call us on 01491 641024  
[www.countryroofingsupplies.co.uk](http://www.countryroofingsupplies.co.uk)

### Duncan Agar Painter and Decorator

- Highly Experienced, Professional Tradesman
- All Aspects of Interior and Exterior Decorating
  - Traditional and Modern Finishes
  - Period Properties a Speciality
  - Free Quotations and Advice
  - References Available

Tel: 0118 971 2340  
& 07787 552 983

## PERSONAL TAX RETURNS

Contact Geoffrey Cole  
**Geoffrey Cole & Co**

*Chartered Accountants & Registered Auditors*

**4 Reading Road Pangbourne Berkshire RG8 7LY**  
**Telephone 0118 984 1556 Email [post@geoffreycollection.co.uk](mailto:post@geoffreycollection.co.uk)**  
**[www.geoffreycollection.co.uk](http://www.geoffreycollection.co.uk)**



## PANGBOURNE PARISH COUNCIL

Tel: 0118 9841118 Email: [clerk@pangbourne-pc.gov.uk](mailto:clerk@pangbourne-pc.gov.uk) Website: [www.pangbourne-pc.gov.uk](http://www.pangbourne-pc.gov.uk)

### NEW CYCLE RACKS-RECREATION GROUND



As part of West Berkshire Council's *Active Travel Scheme*, three new bike racks have been installed at Pangbourne Recreation Ground which should make a useful addition to the area which previously had no cycle storage. No car parking spaces have been lost as a result. Similar racks have appeared throughout the district.



### NEW PEDESTRIAN ACCESS- PANGBOURNE HILL CEMETERY



As the final sections of the development at Pangbourne Hill are now being finished, work has commenced on knocking through a new pedestrian access to Pangbourne Hill Cemetery and new car park provision for the Cemetery.

This will provide safer access to the Cemetery and enable visitors to walk all the way from the village, via the new development without having to walk the final stretch on the busy Pangbourne Hill road.



Once the car park is completed in the coming weeks, we ask that all visitors to the Cemetery park in the car park and use this access path. It will no longer be necessary to drive any vehicles (funeral directors excepted) into the Cemetery itself. This should help protect graves, surfacing and pathways within the cemetery itself.

Thank you in advance for your co-operation in this matter.

### NEW PARISH COUNCIL WEBSITE

We are pleased to have finally launched the new Parish Council Website which will enable us to provide much more information in a readily accessible way as well as up to date news items and links to community activities:

<https://www.pangbourne-pc.gov.uk/>



### DAMAGED BELISHA BEACON-HIGH STREET

Pangbourne Parish Council have been advised by the Highways team at West Berkshire Council that the replacement parts for the repair of the crossing beacon are on order and will be due in the next few weeks. The safety fences have been better secured in the meantime.



## WASTE AND LITTER – OPEN SPACES

The few sunny days in the run up to the Easter Holidays saw a marked increase in littering and waste at the Recreation Ground and River Meadows.

Pangbourne Parish Council works hard to ensure that these spaces remain clean for all to enjoy and asks again that people take all litter home where possible or use the bins provided.

- Please do open the lids of the bins in the compound or use the bins towards the back if you can. Often the bins nearest the entrance become full while many of the other bins are empty. If possible, please do not place waste on closed lids of the bins unless they are all full.
- There is now provision for glass recycling via smaller marked up bins at the River Meadows
- We have now switched to our summer schedule of more frequent collections at the River Meadows. As the weather improves and if necessary, and if we continue to see the levels of activity and waste that was experienced last year, collections will be increased even further. Last year the Parish Council doubled its collections and also had volunteers, Councillors and staff placing black bins bags on gates and fences at busy times to deter littering.
- The Council are working with contractors to increase waste provision at the Recreation Ground and hope to have this in place for the summer.
- Parish Council owned dog bins are operated under contract by West Berkshire Council. If a dog bin has not been emptied or is full, you can report it on the report a problem function on West Berkshire Council's Website: <https://www.westberks.gov.uk/reportaproblem>

It only takes a couple of minutes and you can use the following options :

Fill or empty something /open space/dog waste bin or litter bin/ then click on the interactive map to locate

Alternatively bagged dog waste can be placed in public rubbish bins if the bins are full.

## RE-OPENING PANGBOURNE VILLAGE HALL

We are really looking forward to welcoming back many of the community groups and activities in line with the government's roadmap for easing of restrictions. We anticipate groups re-starting in earnest from mid May (as things currently stand), with only limited (youth) groups able to meet before then. Please do contact the Hall Bookings Clerk or make bookings direct via the online Hallmaster system, details of which can be found on the Parish Council website under Village Hall. While social distancing measures are in place, we will largely operate in the main hall to ensure that we are able to operate in a covid-secure manner.

Sadly while the hall has been closed, there has been a significant water leak which has affected the smaller hall, although we are working with our insurers and their contractors to get repairs completed as soon as possible in advance of re-opening.

## TWO NEW COUNCILLORS

Pangbourne Parish Council are pleased to have been able to Co-opt two new Councillors at their last meeting.

Ian Walker and Conor Roberts bring a number of useful skills and we look forward to them making an active contribution to village life.

## COVID TESTING KITS

### COMMUNITY COLLECT MOBILE OFFER – ROUTE 2 – TUESDAYS

West Berkshire Council are starting a trial of mobile collection of Covid Home Testing Kits at sites across the district.

There will be a mobile vehicle onsite at Pangbourne Village Hall on Tues 13th April between 12.15-1.15pm and then every Tuesday at the same time while the trial is live. Residents can collect home testing kits as per the detail below and on West Berkshire's Website.

<https://info.westberks.gov.uk/article/37815/Community-Testing-in-West-Berkshire-Lateral-Flow-Testing>

As part of the Government's plan to target asymptomatic people to prevent the spread of COVID-19, home testing kits are now available to people who live in households with children, are part of childcare bubbles, or interact with children on a regular basis (school staff, scout leaders, school bus drivers). These are available to be ordered online through gov.uk but also from the Council's four asymptomatic testing sites in Hungerford, Burghfield, Newbury and Thatcham. However, in an effort to reach a wider number of people and encourage the use of home testing, West Berkshire Council is launching a Community Collect mobile offer visiting areas across the District at the same time each week in order that residents can collect a box of 7 testing kits to be done at home. This will launch on Monday 12th April and the schedule and location is shown below for information.

If you have a child aged 18 or under, work with children or interact with children on a regular basis, you are entitled to collect a box of test kits. Please be advised that due to supply issues we will be limiting this to one box per adult (possibly 2) until we know the demand and national supplies are fully operational. This new mobile channel is intended to supplement the other channels open to you for testing which are currently;

- For asymptomatic testing (not displaying symptoms) at one of our four testing sites – bookings can be made using, <https://www.westberks.gov.uk/lft> although a booking is not essential and you can walk

in. This is now open to all residents. Please check the website for opening times and days of these sites, particularly over Easter.

- Home test kits for those in a household with children or a childcare bubble can order online from gov.uk to have a box delivered to your home address, or collect from one of our four testing sites or now from this mobile trial option.
- Remember if you are displaying symptoms, you need to book a test through the PCR testing site here <https://www.gov.uk/get-coronavirus-test>

It is important to note that even if you have been vaccinated, you may still catch Coronavirus (although your symptoms are likely be reduced) and indeed, still spread it to your loved ones so please take advantage of this free offer and make twice weekly testing part of your normal routines."

For more information on eligibility, please go to <https://www.gov.uk/guidance/rapid-lateral-flow-testing-for-households-and-bubbles-of-school-pupils-and-staff>.

## ROUTE SUMMARY

LOCATION	START	END
Stop 1 – Acland Village Hall, Cold Ash (RG19 9JH)	9.30am	10.15am
Stop 2 – Bucklebury Memorial Hall (RG7 6QH)	10.45am	11.45am
Stop 3 – Pangbourne Village Hall (RG8 7AN)	12.15pm	1.15pm
Stop 5 – Sulhamstead & Ufton Village Hall (RG7 4DD)	3.45 pm	4.30 pm

## PUBLIC RIGHTS OF WAY IMPROVEMENT PLAN CONSULTATION

### HAVE YOUR SAY ON PUBLIC RIGHTS OF WAY

Work as started on an improvement plan for public rights of way across West Berkshire – and West Berkshire Council wants your views.

West Berkshire Council is responsible for around 740 miles of public footpaths, bridleways, restricted byways and byways. There are public rights of way across the whole of West Berkshire, in both urban and rural areas. These form an important network for enjoying and exploring the countryside and travelling to work or school, as well as supporting tourism and good health. They provide hundreds of miles of free routes on which people can walk, cycle, ride horses or use other means of travel.

Our rights of way improvement plan helps us to make sure the public rights of way network meets the needs of the public, now and in the future. Our current Rights of Way Improvement Plan (ROWIP) was adopted on the 27 May 2010 and it now needs updating.



Speaking about the work Councillor Richard Somner, Executive Member for Transport and Countryside, said:

"Many people have used public rights of way more during the pandemic, or have discovered them for the first time. Accessing the countryside and West Berkshire's network of paths has been very important to people for their health and mental wellbeing. We want to better understand the value of the public rights of way network to those who currently use them as well as how we might other residents to discover and make use of them."

The rights of way service is also using the process of reviewing its ROWIP to understand the needs of residents of West Berkshire more fully. It will use the opportunity to make sure the ROWIP addresses the priorities of the area in terms of health and wellbeing, supporting people living with disabilities and mental health issues, regeneration, growth, transport, climate change, tourism and other priorities.

To make sure the new ROWIP reflects the needs of West Berkshire's residents, we'd like to know about your experience of using our public rights of way, and how important the network is to your health and wellbeing. We also want to know if you've encountered any problems using the PROW's, and whether your concerns were addressed.

An online survey has been set to gather people's views - take part before 30 May 2021.

A public right of way is a path that anyone has the legal right to walk on. Some public rights of way can also be used by cyclists, horse riders or motorists. You can use:

- **Footpaths** for walking, running, mobility scooters or powered wheelchairs
- **Bridleways** for walking, horse riding, bicycles, mobility scooters or powered wheelchairs
- **Restricted byways** for any transport without a motor, except mobility scooters and powered wheelchairs
- **Byways open to all traffic** for any kind of transport, including cars (but they're mainly used by walkers, cyclists and horse riders)

You can explore public rights of way on the West Berkshire Online Map.

## BYE-LAWS

Thank you to everyone who has taken the time to respond to the recent proposals. It is clear that the local community cares very deeply about its open spaces and the Parish Council is listening. All responses will be recorded and reviewed. It is important to note that no decisions have been taken and it is anticipated that it may take many months, or even years for any proposals to potentially progress. Public support for proposals is a very important part of the process and nothing will go forward without further consultation. In March the Council issued a further Statement giving more detail which can be found on the website.

## PLANNING APPLICATIONS REVIEWED BY THE PARISH COUNCIL SINCE LAST ARTICLE

APP NO:	PROPOSAL	RECOMMENDATION
21/00294/ HOUSE	Demolition of garage. Double and single storey extension to side + detached double garage. Grove Cottage, Tidmarsh Road, Pangbourne RG8 7AY	OBJECTION
21/00430/ HOUSE	Conversion of loft space including change from hipped roof to gabled, plus rear single storey extension 22 Horseshoe Road, Pangbourne RG8 7JQ	NO OBJECTION
21/00364/ HOUSE	To remove an existing timber shed and erect a 2-storey timber frame double garage with dormer windows to the front and external stair access to a first floor level to allow for an office/workspace Hawksbill Cottage, Newtown, Upper Basildon RG8 8JG	OBJECTION
21/00365/ LBC2	To remove an existing timber shed and erect a 2-storey timber frame double garage with dormer windows to the front and external stair access to a first floor level to allow for an office/workspace Hawksbill Cottage, Newtown, Upper Basildon RG8 8JG	OBJECTION
21/00473/ HOUSE	Matching single storey rear extensions to numbers 105 and 103 Horseshoe Road, single storey storage shed to side of 103 at the rear and replacement of external windows and doors to 103 103 and 105 Horseshoe Road, Pangbourne RG8 7JL	NO OBJECTION
21/00339/ FUL	Part retrospective erection of fence, piers and gates to front garden and change of use of strip of land on the northwest side of plot 1 to residential garden 1 Sheffield Close, Pangbourne RG8 7GD	NO OBJECTION
21/00512/ HOUSE	Erection of single storey rear extension, single storey front extension and infill of existing porch Winloed, Bere Court Road, Pangbourne RG8 8LB	NO OBJECTION
21/00573/ HOUSE	Two storey side extension and single storey front extension to dwelling with changes to fenestration and external materials 151 Bourne Road, Pangbourne RG8 7JT	OBJECTION
21/00681/ HOUSE	Single storey extension 1 Thames Villas, Thames Avenue, Pangbourne RG8 7BY	NO OBJECTION
21/00664/ HOUSE	Loft Conversion to Increase height and pitch of existing rear roof to allow a usable room to be created. Propose a Dutch Gable end to reduce impact of raising roof line and to reduce loss of sun in garden. Additional opening windows above 1.7m to be added to sides of existing house. Additional roof windows to be added to existing roof (and proposed loft conversion roof). 1 Horseshoe Road, Pangbourne RG8 7JQ	NO OBJECTION
21/00751/ HOUSE	Single storey extension for an Orangery to the rear of the existing building. To the north west of the existing building. Summerlea Grange, Road Known As Theale Road, Tidmarsh, Reading, West Berkshire RG8 8ES	NO OBJECTION
21/00700/ FUL	Retrospective change of use of land to residential (C3) use and curtilage 3 Croft Drive, Pangbourne RG8 8AN	OBJECTION

### APPLICATIONS DETERMINED BY WEST BERKSHIRE COUNCIL:

20/03048/ HOUSE	Construction of new gazebo Highfield, Flowers Hill, Pangbourne RG8 7BD	APPROVAL
20/02841/ ADV	New vitrine screens in the screens in the windows of the southern and west elevations Strutt and Parker, 1 High Street, Pangbourne RG8 7AE	APPROVAL
21/00042/ HOUSE	Single Storey extension to flank of property 153 Bourne Road, Pangbourne RG8 7JT	APPROVAL
21/00224/ TPW	1. TPO T1 = T2 TPP/AMS – Sycamore – canopy lift to 3.5-4m, targeting sub branches where possible (paragraph 4.8 of AMS) cut ivy at base, remove dead wood and clear branches away from telegraph pole and overhead cables.	APPROVAL

APP NO:	PROPOSAL	WBC DECISION
	2. TPO T2 = T29 TPP/AMS – Norwegian Maple – Crown reduction of 3m, and a radial spread reduction of ~2m; to good growth points and final finished cuts of 50mm diameter. 3. TPO T4, T5, T6, T7 = T25 Norwegian Maple, T24, T23, T22 Beech TPP/AMS – Crown lift to 3m. 4. TPO T3, T8, G1 = T30, T19, G27 – Yew – Crown lift to 3m Former Camden Ridge, Riverview Road, Pangbourne	
21/00091/ NONMAT	Non material amendment to approved 19/02826/HOUSE -Garage conversion, new pergola and replacement driveway. Amendment – Amend flat roof to pitched roof. Current height approved is 2.2m. Proposal is to increase this by 30cm to 2.5m. No changes to location of building or the area it would cover. No change to materials - all timber construction 24 Horseshoe Road, Pangbourne RG8 7JQ	APPROVAL
20/03001/ COND2	Application for approval of details reserved by condition 3 (Schedule of works) of approved 20/01534/LBC2 - Changes to Gutter area of Link Building to create new deeper gutter along line of Servants wing and to replace lead in gutter with Saranfil. Bere Court Bere Court, Pangbourne RG8 8HT	APPROVAL
20/02947/ TPW	T1 Sycamore - Remove Ivy from the branches and main stem. Selectively prune to give 2m clearance to the property. Lift the crown to a height above ground level of 5.5m by removing secondary and tertiary growth. 9A Shooters Hill, Pangbourne RG8 7DZ	APPROVAL
21/00067/ HOUSE	Renovation of dwelling house: First floor extension over garage to form guest suite. Ground floor rear extension to kitchen. New windows throughout, aluminium framed, double glazed. Additional weatherboard-style panels to walls on first floor. Roof reroiled. New, larger balcony to east facade of first floor Bere Court Farm, Bere Court, Pangbourne RG8 8HT	APPROVAL
21/00177/ COND1	Approval of details reserved by Condition Nos. 14 (Biodiversity enhancements) and 16 (Arboricultural method statement) of Approved Application 20/02329/FULD: Section 73 - Application to vary Conditions 2 (approved plans), 3 (materials), 4 (construction method statement) and 7 (drainage) of planning permission 20/01046/FULD - 5 Bedroom detached dwelling, detached garage and hardstanding. Former Camden Ridge, Riverview Road, Pangbourne	APPROVAL
21/00215/ HOUSE	Two storey front extension over and adjacent to the existing garage; further two storey extension to include first floor dormer window; single storey front porch extension; Single storey rear extension to include re-roofing of the existing to match; Insertion of 2No rooflights into the rear pitch of the main roof; internal alterations as indicated. 9 St James Close, Pangbourne RG8 7AP	APPROVAL
21/00147/ TPW	Cut back suckers at base of all lime trees under TPO 201/21/0993 to promote proper growth of the trees themselves and to allow for traffic to pass unimpeded along the lane The Cottage, Bere Ct Farm, Bere Ct, Pangbourne RG8 8HT	APPROVAL
20/03018/ TPW	T912 and T913 - Yew - Lift low branches over driveway to approximately 5m, targeting secondary pruning points, to facilitate access to property for high sided vehicles. 1 St James Close, Pangbourne RG8 7AP	APPROVAL
20/02661/ LBC2	New awning to rear external drinking area with retractable canvas roof. The Swan Hotel, Shooters Hill, Pangbourne RG8 7DU	REFUSAL
20/02662/ FUL	New awning to rear external drinking area with retractable canvas roof. The Swan Hotel, Shooters Hill, Pangbourne RG8 7DU	REFUSAL



**PAULBELCHER**  
**PROPERTY SERVICES OF PANGBOURNE**  
 T 01189843722 M 07888680834  
[paulbelcherpropertyservices@yahoo.co.uk](mailto:paulbelcherpropertyservices@yahoo.co.uk)

**ALL INTERIOR & EXTERIOR WORK UNDERTAKEN  
 AND COMPLETED TO A HIGH STANDARD**

**CALL OR EMAIL FOR FREE INDEPENDENT ADVICE  
 AND A NO OBLIGATION QUOTE**

**ALL WORK FULLY INSURED - NO JOB TOO SMALL**

**Shaun Guard**  
**TV & WIFI SERVICES**

- Aerials - supplied, repaired & poor reception solved
- Satellite - Sky Q dish upgrades, discreet dish installations also foreign TV
- Internet - blackspots cured, data cables to your TVs / computer
- TVs - hung on your wall or set up & tuned
- CCTV & Door Entry - domestic installations

**OXFORD AERIALS**  
**Call Pangbourne 01189 639113**  
[www.oxfordaerials.co.uk](http://www.oxfordaerials.co.uk)

**Plant & tool hire for  
trade & DIY.**

Your first choice for the best  
 equipment, service and price.  
 Go to [www.didcotplant.co.uk](http://www.didcotplant.co.uk) to  
 check our online catalogue.



**DIDCOT PLANT**  
 PLANT AND TOOL HIRE FOR TRADE & D.I.Y.  
[www.didcotplant.co.uk](http://www.didcotplant.co.uk)  
**01235 814000**

**MADE TO MEASURE**  
*Curtains, Roman Blinds,  
 Cushions Covers, etc  
 at competitive prices.*

Call Caroline on  
 (0118) 9542448  
 or 07815 610 007

**Aylett Electrical**



Kevin Aylett – your local,  
 reliable, registered and  
 insured electrician.

- Domestic installations
- Testing and repair
- Free quotes and advice
- All maintenance and repairs undertaken

Blossomsend Cottage Blossom Lane Theale RG7 5BE  
 Tel: 0118 9302037 Mob: 07986 033 051



**LINDSAYS**

- CLEARANCE & RECYCLING
- REMOVALS & STORAGE

- Commercial clearances • Domestic clearances
- Man and van services • Garden clearances
- Sheds demolished • Attic clearances
- Fully licensed waste carrier
- Honest and reliable

Serving domestic and business customers  
 across Berkshire and the surrounding villages –  
 from single items to full house clearance.

**Get in touch for a FREE QUOTE**

0118 9019935 or 07889 851 600  
[lindsaysclearance@outlook.com](mailto:lindsaysclearance@outlook.com)  
 @lindsaysclearance

## Plumber & Bathroom fitter

**From Dripping Taps to Complete Bathroom Design and Installation.**

Full Quality Refit, all Tiling, Construction, Alterations etc, from start to finish.

**Free Advice and Quotes.  
Friendly, Reliable and Insured.**

**Happy to undertake  
the smallest of jobs**

**Richard – 0771 333 6661  
or 0118 9676384**  
(answering machine)

## ***Cleaver Cars Ltd***

Independent Citroën Specialist

♦  
Servicing, repairs and MOTs  
All makes and models

♦  
Free local collection  
and delivery service

♦  
**Tel. 0118 957 6405**

67 Loverock Road  
Reading, RG30 1DZ

Email: [cleavercars@btconnect.com](mailto:cleavercars@btconnect.com)  
[www.cleavercars-reading.co.uk](http://www.cleavercars-reading.co.uk)

## **Monumental & Masonry Craftsmen**

Family run business since 1858

**A.F. JONES**  
33 Bedford Road  
Reading  
RG1 7EX

Tel: 0118 9573537  
email  
[info@afjones.co.uk](mailto:info@afjones.co.uk)

**E.T. SHEPPARD**  
36 Reading Road  
Henley on Thames  
RG9 1AG

Tel: 01491 574644  
email  
[info@etsheppard.co.uk](mailto:info@etsheppard.co.uk)

**Specialists in all stonework  
Memorials, Restoration, Kitchens, Bathrooms**

## **HFAC LIMITED ROOFERS & DAMP PROOFING SOLUTIONS**

*HIGH-QUALITY ROOFING SERVICES*

- Flat roofing specialists
- Chimneys
- Insulation
- Budget roof repairs
- Fascias, soffits and guttering
- Repointing
- Painting
- Plastering
- Rendering
- Carpentry
- Guttering replacements
- Gutter Cleaning
- All damp proof solutions
- All lead dressing
- Roof moss removal
- 24 hour drain clearing and blockages
- Cast iron guttering
- OAP 10% discount
- 30 year guarantee

**Good Quality is Soon Forgotten**

**5\*\*\*\*\* GOOGLE REVIEWS**



Call us on:

**01491 876446 • 07425 790635**

Email: [hfactd@gmail.com](mailto:hfactd@gmail.com)

Chiltern House, 45 Station Road, Henley-on-Thames, Oxon, RG9 1AT

## **PICTURE FRAMING PICTURE RESTORATION**

**R. G. Bridgewater**

(established in the trade since 1956,  
apprenticed at Reading Fine Art Gallery,  
also with Picture Crafts of London Street, Reading)

- Oils and pastels restored
- Watercolours, engravings, prints de-foxed and cleaned
- Conservation mounting and framing
- All aspects of framing undertaken (tapestries, silks, butterflies, medals, etc)

**Tel: 0118 984 4622**

# USEFUL NUMBERS

## USEFUL NUMBERS

POLICE	Non-emergency number	101
CRIMESTOPPERS		0800 555 111
PANGBOURNE PARISH COUNCIL (at Village Hall)		
	<a href="http://www.pangbourne-pc.gov.uk">www.pangbourne-pc.gov.uk</a>	0118 984 1118
	Parish Office opening hours – Mon am, Tues am, Thurs pm	
CHAIRMAN OF PANGBOURNE PARISH COUNCIL		
	Peter MacIver – <a href="mailto:peterpangbourne@gmail.com">peterpangbourne@gmail.com</a>	07768 004844
VICE CHAIRMAN OF PANGBOURNE PARISH COUNCIL		
	John Higgs – <a href="mailto:jhiggs@pangbourne-pc.gov.uk">jhiggs@pangbourne-pc.gov.uk</a>	0118 984 4758
CLERK TO PANGBOURNE PARISH COUNCIL		
	Becky Elkin – <a href="mailto:clerk@pangbourne-pc.gov.uk">clerk@pangbourne-pc.gov.uk</a>	0118 984 1118
WEST BERKSHIRE COUNCIL		
	Switchboard	01635 551111
CITIZENS ADVICE BUREAU		01635 516 605
MP FOR READING WEST		
	Alok Sharma.	0118 941 3803
SURGERY		0118 984 2234
	Emergency out-of-hours (6.30pm – 8am)	111
PHARMACY		0118 984 2935
LIBRARY		0118 984 4117
PANGBOURNE AND DISTRICT VOLUNTEER CENTRE		0118 984 4586
	Office closed until further notice due to Covid19 restrictions.	
PANGBOURNE PARISH PRIEST		
	Reverend Heather Parbury – <a href="mailto:rector@pangbournechurches.info">rector@pangbournechurches.info</a>	0118 984 2928
FLOOD WARDENS		
	Kay Lacey	07889 231136
	Stephen Billyeald	0118 984 3368

## SUBMISSION OF ARTICLES\* AND ADVERTS†

	COPY DEADLINE	DISTRIBUTED
Issue 163 – July/August	4th June	24th June
Issue 164 – September/October	6th August	26th August
Issue 165 – November/December	8th October	28th October

Please send all submissions to [pangbourne@heraldgraphics.co.uk](mailto:pangbourne@heraldgraphics.co.uk).  
Please bear in mind the distribution date when including dates in your articles.  
(\*receipt of an article is not a guarantee of inclusion; †payment is required in full prior to publication)



# CLASSIFIEDS

## ELECTRICIANS

### Aylett Electrical

Kevin Aylett – your local, reliable, fully qualified and insured, domestic electrician.

0118 9302037

Mob: 07986 033 051

## FUNERAL SERVICES

### A B Walker

See main advert  
on page 32.

Thatcham – 01635 873672

Tilehurst – 0118 304 0068

Reading – 0118 957 3650

## GARDEN SERVICES

### Gardens by Ross Agar

Design and maintenance.

0118 971 2340

0793 948 5919

## MOLES? Are they ruining your lawn?

Call MoleMan Mark to get rid of them.

*British Mole Catchers Register accredited.*

07887 480014

## JEWELLERY REPAIRS

### Sandy Ebdon-Jackson B.A.

Re-stringing, re-designing, replacing lost parts etc.

Please message description and photo of required  
repair for quote.

07789 238557

## LAUNDRY/DRY CLEANERS

### Launderclean

4 Station Road, Pangbourne.

Launderette and dry cleaners.

0118 984 2197

## PAINTER

### Andy The Painter

Interior and Exterior Painting.

Fully Qualified and Insured.

07933 266874

andyblack007@outlook.com

## PET CARE

### Purley Pet Care

Pet boarding, walking and feeding for happy paws  
and waggy tails. Fully licenced and insured. Boarding  
or day care. Big animals or small. References available  
on request. Call Joan.

07867 676675

joanjack@sky.com

## PLUMBER & BATHROOM FITTER

Happy to undertake the smallest of jobs.

Call Richard.

0771 333 6661

0118 967 6384

## PROPERTY MAINTENANCE

### Duncan Agar

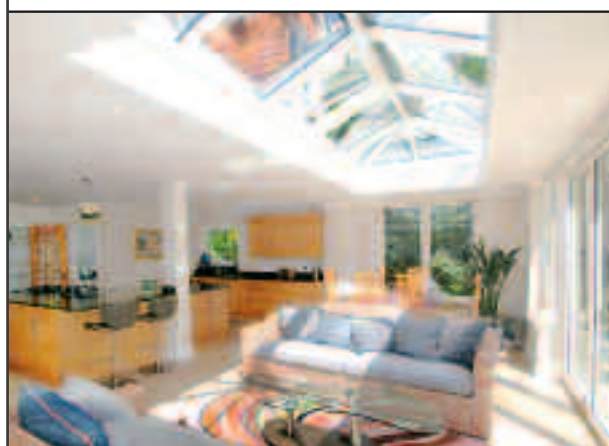
All aspects of maintenance including gutter cleaning  
and repairs, broken glass, painting, etc.

0118 9712340

07787 552983



individual  
conservatories  
and orangeries  
by **Malbrook**



please contact us to arrange a design consultation

TEL: 020 8780 5522 • EMAIL: [info@malbrook.co.uk](mailto:info@malbrook.co.uk)

[www.malbrook.co.uk](http://www.malbrook.co.uk)

# TRADITIONAL BRITISH VALUES

Tidmarsh RG8 8HG

## We provide all garage services for your car

*"Alec Issigonis invented the Mini in 1959. It became a symbol of true Britishness, trustworthiness and reliability. Our PR Motors team has been applying the same important values for over 30 years."*



JASON, Technician at PR Motors



### COVID-19 UPDATE

We are Covid secure and are offering all our usual services

We are also totally contactless

*Thank you for your support*



Email: [enquiries@prmotors.biz](mailto:enquiries@prmotors.biz) Web: [prmotors.biz](http://prmotors.biz)

Tel: **0118 984 4889**



Opening times: **Mon-Fri: 7:30am - 5:30pm**