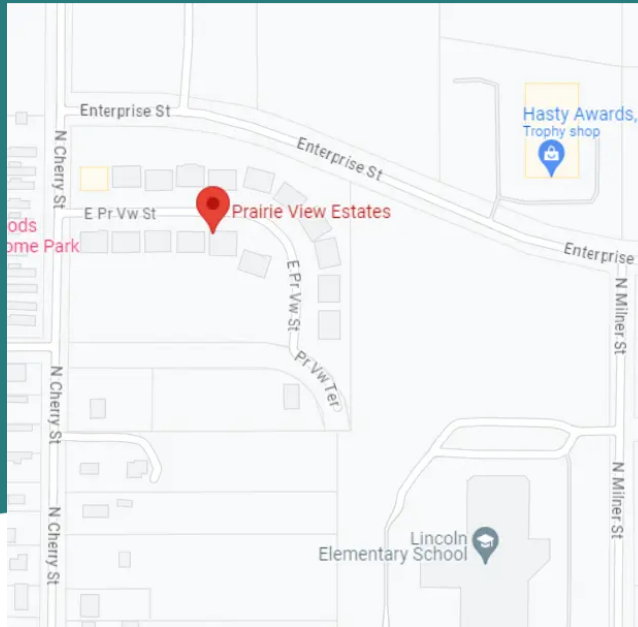


# COMMUNITY FEATURES

- Clubhouse with Full Kitchen
- Pet-Friendly Community
- High Speed Internet
- Community Garden
- Supportive Services Through ECKAN
- Water & Garbage Removal Included
- On-Site Manager
- On-Site Maintenance
- Accepts Online Payments
- Affordable .. Income limits apply.



# Prairie View Estates



Please Call to Schedule a Showing

### Hours

Monday - Friday  
9:00 am - 5:00 pm

928 E. Prairie View St.,  
Ottawa, KS 66067

**785.241.9885**

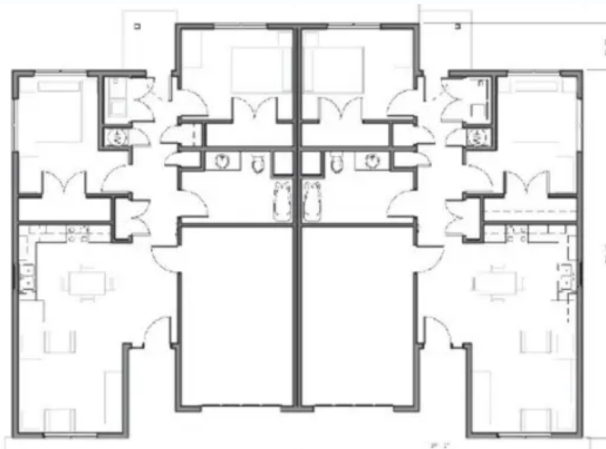


see more at [www.beacon.cc](http://www.beacon.cc)

A quality community  
designed just for you!



2 Bedroom  
1 Bath  
1,291 SqFt

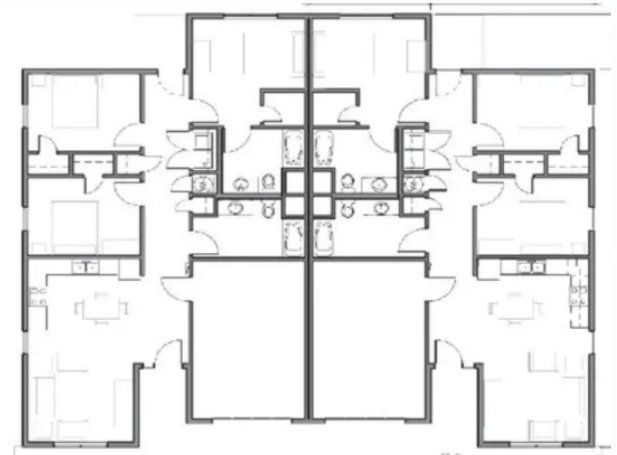


## Prairie View Estates

### APARTMENT FEATURES

- 2 & 3 Bedroom Duplexes
- Attached Garage Parking
- Fully-Equipped Kitchen with Refrigerator, Range, Microwave, Dishwasher & Disposal
- Private Patio
- Walk-In Closet(s)
- Wood-Look Flooring & Plush Carpeting
- Entry Closet
- Laundry Closet with Full-Size Washer & Dryer Connections
- 9' Ceilings
- Window Coverings Included

3 Bedroom  
2 Bath  
1,536 SqFt



PRAIRIE  
VIEW  
ESTATES



928 E. Prairie View St.,  
Ottawa, KS 66067

785.241.9885



see more at [www.beacon.cc](http://www.beacon.cc)

BEACON  
MANAGEMENT, LLC