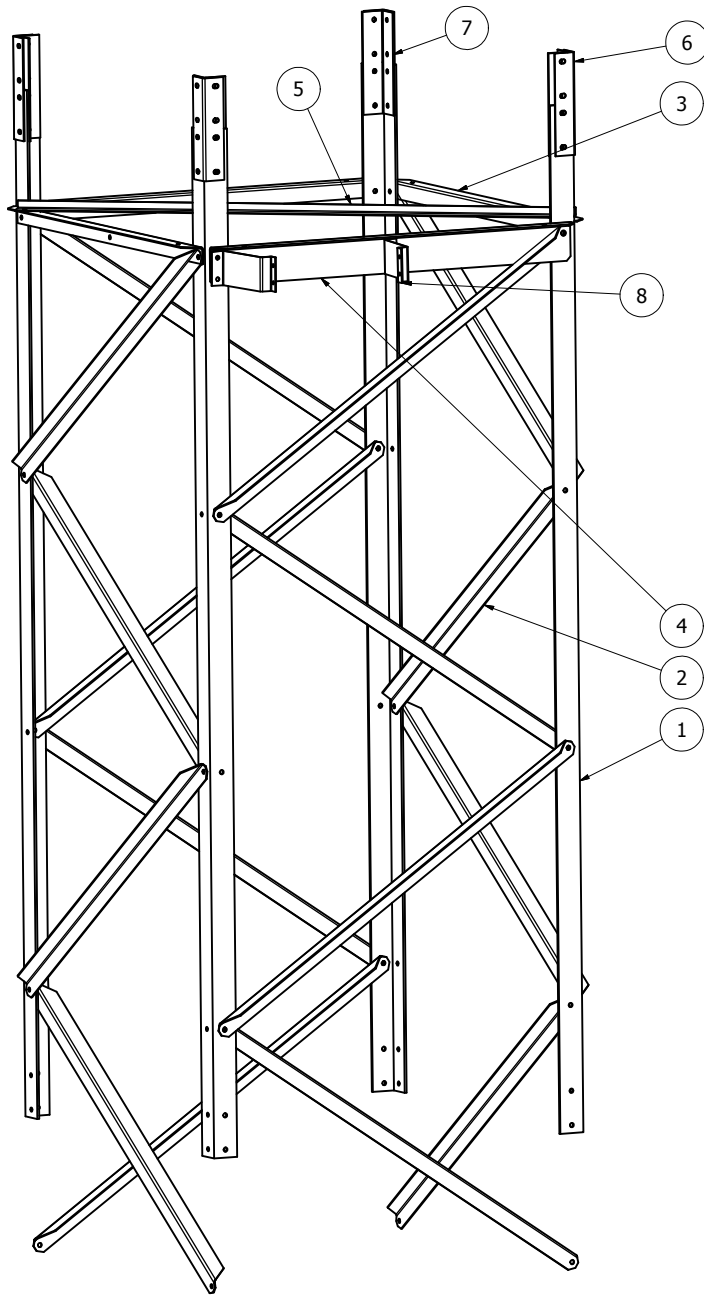


44410 10ft 1/4 int section



Parts List			
ITEM	QTY	PART NUMBER	STOCK NUMBER
1	4	64-L007 120 1-4 leg	120 x 3 x 3 x 1/4 L
2	16	64-D007 diagonal	55.5 x 2 x 2 x 8 ga L
3	3	64-C001 cross angle	47 x 2 x 2 x 8 ga L
4	1	64-LC002 Ladder Cross bar	46.75 x 4.5 x 2 x 8 ga L
5	1	64-T001 tie brace	65.5 x 2 x 1 x 8 ga L
6	4	SS2008 Siderail Splice	12 x 2.5 x 2.5 x 8 ga L
7	8	SS0018 Siderail splice 8 ga	12 x 2 x 8 ga
8	2	64-LB003 Ladder Bracket	9 x 1.5 x 12 ga LB
9	65	7/16 x 1 1/2 cap screw	
10	65	7/16 whiz nut	
11	4	5/16 x 3/4 Cap screw	
12	4	5/16 Whiz nut	

DRAWN Rex A Greene		1/8/2007	Greene Welding and Hardware Inc. Greene Galvanized Stairs 217/375/4244 www.greenebinstairs.com	
MFG			TITLE	
APPROVED			TITLE	
		SIZE C	DWG NO 44410 10' 1/4" Section	REV
		SHEET OF		