

AGCO CORN HEAD PARTS

PART #	MODEL	DESCRIPTION	PRICE EA.
ADA400	1977-89 BLACK HEAD	GATHERING CHAIN	\$ 87.00
ADA500	HUGGER / 3000 SER.	GATHERING CHAIN	\$ 76.00 SALE
A71359125	HUGGER / 3000 SER.	LOWER IDLER 8T	\$ 22.00
A70595084	1977-89 BLACK HEAD	LOWER IDLER 8T	\$ 22.00
AP71432138	HUGGER / 3000 SER.	UPPER DRIVE SPROCKET	\$ 24.00
AP70577247	1977-89 BLACK HEAD	UPPER DRIVE SPROCKET	\$ 35.00
A-70586591	AC 1972-89 BLACK HEAD	ROLL FLUTE (SET OF 4) 2H	\$ 79.00
KHC110	HUGGER / 3000 SER.	ROLL FLUTE (3 USED PER ROLL) 3H	\$ 24.50

DRAGO GATHERING CHAINS

PART #	MODEL	DESCRIPTION	PRICE EA.
WN-DR10120	LEGACY, SERIES I & II, DG9060, DG9340, DG11030, GT SERIES	56 LINKS / 7 LUGS / CHROME PINS (NOT 20")	\$ 69.95 SALE
WN-DR10010		11 TOOTH LOWER IDLER SPROCKET (LESS BEARING)	\$ 65.00
A-DR8250		8 TOOTH UPPER DRIVE SPROCKET	\$ 76.00
WN-DR11030	LEGACY, SERIES I & II, DG9060, DG9340, DG11030, GT SERIES	ROLL KNIFE 4 PER ROLL	\$ 39.00 SALE

*FITS ALL ROW WIDTHS EXCEPT 20" SPACING!

GERINGHOFF CORN HEAD PARTS

PART #	MODELS	DESCRIPTION	PRICE EA.
WN-034859	ROTO DISC 30" / NORTH STAR 30" / MS CORNSTAR 30"	CHAIN 76 LINK 6 LUG	\$ 70.00
AGH200	ROTO DISC 30" / NORTH STAR 30" / MS CORNSTAR 30"	CHAIN 76 LINK 9 LUG	\$ 77.00
AGH400	ROTO DISC 20" / NORTH STAR 20" / MS CORNSTAR 20"	CHAIN 72 LINK 9 LUG	\$ 77.00
A032033	ALL 20" HEADS	13 TOOTH LOWER IDLER SPROCKET	\$ 42.95
A032012GH	ALL 30" HEADS	17 TOOTH LOWER IDLER SPROCKET	\$ 43.95
K501060	ROTA DISC HEADS	CUTTING DISC (15 PER SHAFT)	\$ 40.00
K502351	NORTH STAR	ROLL KNIFE (HEAT TREATED TUNGSTEN) USA	\$ 49.95 SALE
K502305SH	NORTHSTAR	ROLL KNIFE BOLT KIT (24 PER ROW)	\$ 3.00 SALE
K501251	ROTA DISC HEADS	ROTOR KNIFE W/ TUNGSTEN EDGE	\$ 21.95
K501839	ROTA DISC HEADS	STUBBLE CUTTER	\$ 38.00

NEW HOLLAND CORN HEAD PARTS

PART #	MODEL	DESCRIPTION	PRICE EA.
WN-102009	974, 996, 96C, 98C, 98D (<2010)	GATHERING CHAIN	\$ 36.95
AIH500	99C, 980CF, 980CR	GATHERING CHAIN (CHROME PIN)	\$ 75.95
AN102448	974, 996, 96C, 98C,	LOWER IDLER NON GREASABLE	\$ 17.50
A84635	98D	LOWER IDLER NON GREASABLE	\$ 20.50
AP86837081	98D (<2013)	SPLINED DRIVE SPROCKET (7 TOOTH)	\$ 26.95
A-84347361	98D (2013>)	ROUND BORE DRIVE SPROCKET (7 TOOTH)	\$ 37.95
AM84499693	99C, 980CF, 980CR	ROLL KNIFE (4 PER SHAFT)	\$ 47.50 SALE
C-K87598741	98D	ROLL KNIFE (4 PER SHAFT)	\$ 24.95
CF86369	974 (SN <536454), 96C, 98C, 98D, 996	LOWER IDLER SUPPORT	\$ 45.95

Please Call For Availability.
PRICES SUBJECT TO CHANGE WITHOUT NOTICE!

Don't see the part you need? Give us a call.... Many other parts are available!

CASE IH CORN HEAD PARTS

800 SERIES



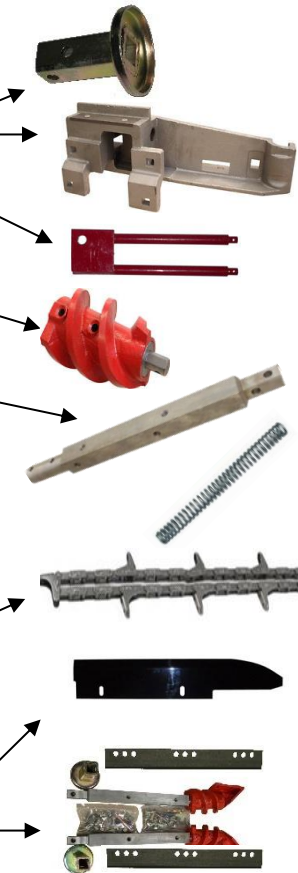
PART #	DESCRIPTION	PRICE EA.
WN-AN102009	GATHERING CHAIN IMP. (BLACK PIN)	\$ 36.95
CF-AN102448	LOWER IDLER SPROCKET	\$ 17.50
KBP199497	UPPER DRIVE SPROCKET (800 ONLY)	\$ 24.95
A-176304C2	ROLL KNIFE (4 PER SHAFT REQUIRED)	\$ 20.95



900-1000 SERIES



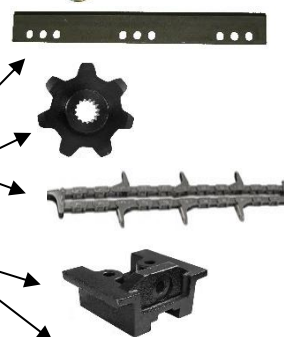
PART #	DESCRIPTION	PRICE EA.
WN-176301C1	ROLL SHAFT COUPLER (1000,3200,3400)	\$ 22.00
WN-199371C5	RH ALUMINUM SUPPORT	\$ 155
WN-199372C5	LH ALUMINUM SUPPORT	\$ 155
CF176286	IDLER SUPPORT LH	\$ 43.95
CF176287	IDLER SUPPORT RH	\$ 43.95
A-1306207C1	WEED KNIFE (WELD ON)	\$ 4.95
WN-352552A1	LH STALK ROLL AUGER W/ BEARING	\$ 100.00
WN-352551A1	RH STALK ROLL AUGER W/ BEARING	\$ 100.00
WN-327913A2	BEARING SHIELD	\$ 7.00
WN-1989222C2	STALK ROLL BEARING	\$ 20.00
WN-199293C5	STALK ROLL SHAFT	\$ 79.50
S176307H	STALK ROLL PIN	\$ 4.50 SALE
WN-1327205C1	RH ROLL SHAFT SUPPORT	\$ 49.95
WN-1327204C1	LH ROLL SHAFT SUPPORT	\$ 49.95
CS1306150	IDLER TENSION SPRING	\$ 7.00
A-199097C3	EAR SAVER (RUBBER) 800/900/1000/GVL	\$ 5.00
WN-AN102009	GATHERING CHAIN IMP. (STANDARD)	\$ 36.95
AJD1H100	GATHERING CHAIN CHROME PIN	\$ 52.95
A-84635	LOWER IDLER SPROCKET	\$ 20.50
WN-199497C1	UPPER DRIVE SPROCKET	\$ 21.95
WN-1347176C1	CHAIN GUIDE	\$ 20.95
C-199382C2	RH DECK PLATE	\$ 32.95
C-199381C2	LH DECK PLATE	\$ 32.95
K900	STALK ROLL KNIFE TUNGSTON (4 NEEDED PER SHAFT)	\$ 24.95 SALE
IH1000SRKVH	1000 SER. ROW UNIT KIT	\$ 759 SALE



2200/3400 SERIES



PART #	DESCRIPTION	PRICE EA.
WN-86977538	2000 SER. ROLL KNIFE PLATE (2 PER ROLL)	\$ 47.50
WN-87598741	3000 SER. ROLL KNIFE (4 PER ROLL)	\$ 22.95 SALE
C-A84635	LOWER IDLER SPROCKET 3200-3400	\$ 20.50
AP86837081	2200, 2400, 3200 SN <YCS023090, 3400 SN <YCS039041 DRIVE SPROCKET	\$ 26.95
WN-AN102009	EARLY 2200-3400 GATHERING CHAIN (STD)	\$ 36.95
WN-86979313	2200, 2400, 3200, 3400 (< 2010)	\$ 50.95
AIH400	6 LUG GATHERING CHAIN 3200, 3400 (2011>)	\$ 63.95
CF86369	LOWER IDLER SUPPORT 2200-3400	\$ 45.95
A-87029139	LOWER IDLER STRAP 2200-3400	\$ 42.95
A-86583948	TENSIONER SPRING	\$ 8.95
P86526475	EAR SAVER (RUBBER)	\$ 7.95



2600/4200/4400 (30" ROW)



PART #	DESCRIPTION	PRICE EA.
AM84499693	ROLL KNIFE (4 PER SHAFT)	\$ 47.50 SALE
AIH500	CHROME PIN GATHERING CHAIN	\$ 75.95



Please Call For Availability.
PRICES SUBJECT TO CHANGE WITHOUT NOTICE!

JOHN DEERE CORN HEAD PARTS

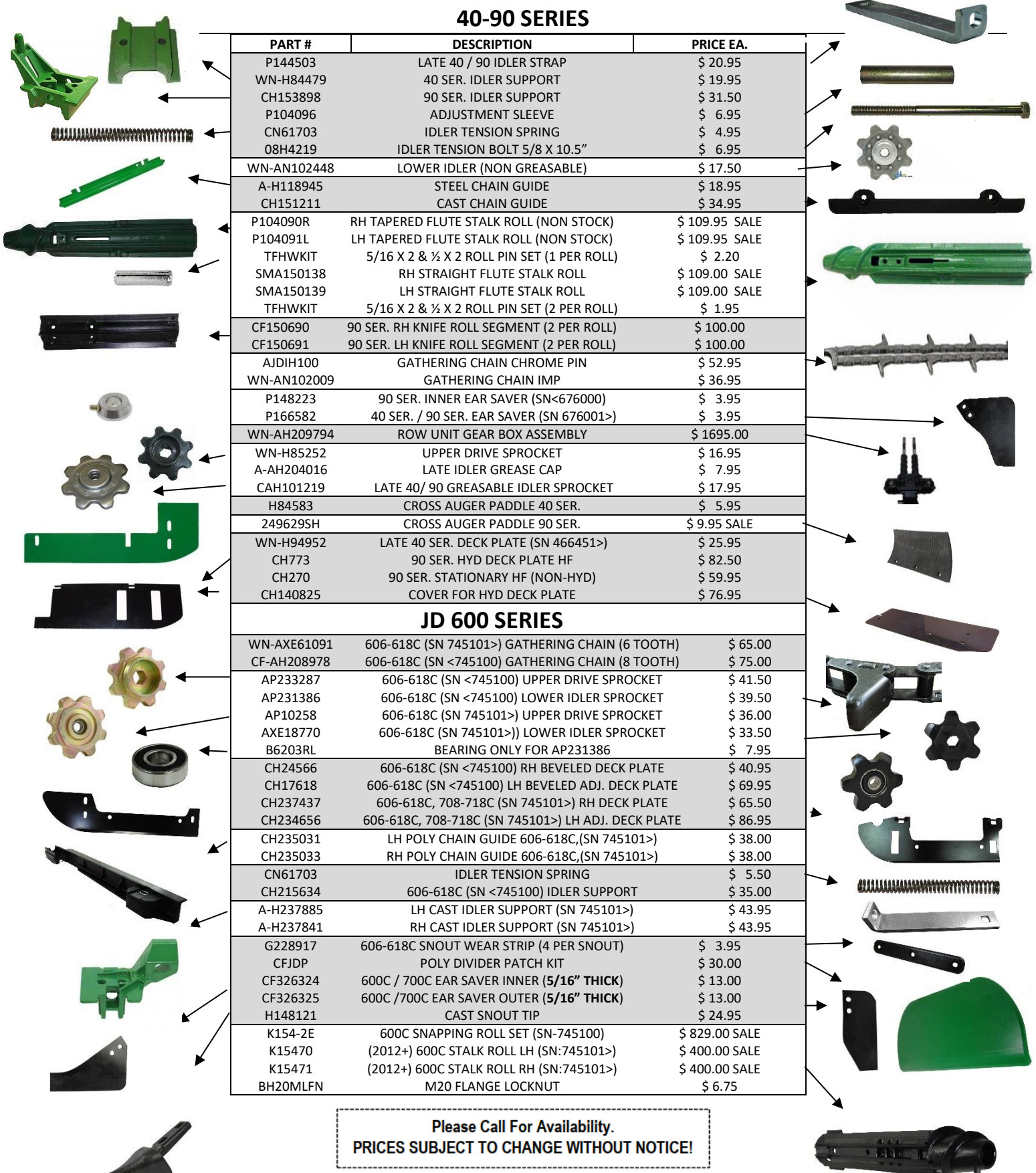
40-90 SERIES

PART #	DESCRIPTION	PRICE EA.
P144503	LATE 40 / 90 IDLER STRAP	\$ 20.95
WN-H84479	40 SER. IDLER SUPPORT	\$ 19.95
CH153898	90 SER. IDLER SUPPORT	\$ 31.50
P104096	ADJUSTMENT SLEEVE	\$ 6.95
CN61703	IDLER TENSION SPRING	\$ 4.95
08H4219	IDLER TENSION BOLT 5/8 X 10.5"	\$ 6.95
WN-AN102448	LOWER IDLER (NON GREASABLE)	\$ 17.50
A-H118945	STEEL CHAIN GUIDE	\$ 18.95
CH151211	CAST CHAIN GUIDE	\$ 34.95
P104090R	RH TAPERED FLUTE STALK ROLL (NON STOCK)	\$ 109.95 SALE
P104091L	LH TAPERED FLUTE STALK ROLL (NON STOCK)	\$ 109.95 SALE
TFHWKIT	5/16 X 2 & 1/2 X 2 ROLL PIN SET (1 PER ROLL)	\$ 2.20
SMA150138	RH STRAIGHT FLUTE STALK ROLL	\$ 109.00 SALE
SMA150139	LH STRAIGHT FLUTE STALK ROLL	\$ 109.00 SALE
TFHWKIT	5/16 X 2 & 1/2 X 2 ROLL PIN SET (2 PER ROLL)	\$ 1.95
CF150690	90 SER. RH KNIFE ROLL SEGMENT (2 PER ROLL)	\$ 100.00
CF150691	90 SER. LH KNIFE ROLL SEGMENT (2 PER ROLL)	\$ 100.00
AJDIH100	GATHERING CHAIN CHROME PIN	\$ 52.95
WN-AN102009	GATHERING CHAIN IMP	\$ 36.95
P148223	90 SER. INNER EAR SAVER (SN<676000)	\$ 3.95
P166582	40 SER. / 90 SER. EAR SAVER (SN 676001>)	\$ 3.95
WN-AH209794	ROW UNIT GEAR BOX ASSEMBLY	\$ 1695.00
WN-H85252	UPPER DRIVE SPROCKET	\$ 16.95
A-AH204016	LATE IDLER GREASE CAP	\$ 7.95
CAH101219	LATE 40/ 90 GREASABLE IDLER SPROCKET	\$ 17.95
H84583	CROSS AUGER PADDLE 40 SER.	\$ 5.95
249629SH	CROSS AUGER PADDLE 90 SER.	\$ 9.95 SALE
WN-H94952	LATE 40 SER. DECK PLATE (SN 466451>)	\$ 25.95
CH773	90 SER. HYD DECK PLATE HF	\$ 82.50
CH270	90 SER. STATIONARY HF (NON-HYD)	\$ 59.95
CH140825	COVER FOR HYD DECK PLATE	\$ 76.95

JD 600 SERIES

WN-AXE61091	606-618C (SN 745101>) GATHERING CHAIN (6 TOOTH)	\$ 65.00
CF-AH208978	606-618C (SN <745100) GATHERING CHAIN (8 TOOTH)	\$ 75.00
AP233287	606-618C (SN <745100) UPPER DRIVE SPROCKET	\$ 41.50
AP231386	606-618C (SN <745100) LOWER IDLER SPROCKET	\$ 39.50
AP10258	606-618C (SN 745101>) UPPER DRIVE SPROCKET	\$ 36.00
AXE18770	606-618C (SN 745101>)) LOWER IDLER SPROCKET	\$ 33.50
B6203RL	BEARING ONLY FOR AP231386	\$ 7.95
CH24566	606-618C (SN <745100) RH BEVELED DECK PLATE	\$ 40.95
CH17618	606-618C (SN <745100) LH BEVELED ADJ. DECK PLATE	\$ 69.95
CH237437	606-618C, 708-718C (SN 745101>) RH DECK PLATE	\$ 65.50
CH234656	606-618C, 708-718C (SN 745101>) LH ADJ. DECK PLATE	\$ 86.95
CH235031	LH POLY CHAIN GUIDE 606-618C,(SN 745101>)	\$ 38.00
CH235033	RH POLY CHAIN GUIDE 606-618C,(SN 745101>)	\$ 38.00
CN61703	IDLER TENSION SPRING	\$ 5.50
CH215634	606-618C (SN <745100) IDLER SUPPORT	\$ 35.00
A-H237885	LH CAST IDLER SUPPORT (SN 745101>)	\$ 43.95
A-H237841	RH CAST IDLER SUPPORT (SN 745101>)	\$ 43.95
G228917	606-618C SNOUT WEAR STRIP (4 PER SNOUT)	\$ 3.95
CFJDP	POLY DIVIDER PATCH KIT	\$ 30.00
CF326324	600C / 700C EAR SAVER INNER (5/16" THICK)	\$ 13.00
CF326325	600C / 700C EAR SAVER OUTER (5/16" THICK)	\$ 13.00
H148121	CAST SNOUT TIP	\$ 24.95
K154-2E	600C SNAPPING ROLL SET (SN-745100)	\$ 829.00 SALE
K15470	(2012+) 600C STALK ROLL LH (SN:745101>)	\$ 400.00 SALE
K15471	(2012+) 600C STALK ROLL RH (SN:745101>)	\$ 400.00 SALE
BH20MLFN	M20 FLANGE LOCKNUT	\$ 6.75

Please Call For Availability.
PRICES SUBJECT TO CHANGE WITHOUT NOTICE!

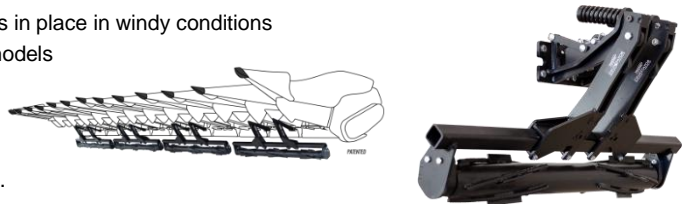


YETTER STALK DEVISTATOR

Today's hybrids develop tough stalks that can destroy expensive tires and tracks on equipment. The 5000 Stalk Devastator™ saves tires and tracks by knocking over, stomping, and crushing stalks while leaving them attached, speeding up the cornstalk breakdown process and improving field conditions for spring planting.

Features

- Prevents damage to tires, tracks, wires, and hydraulic hoses on combines, trucks, tractors, and implements
- Knocks over and crushes stalks for faster decomposition and microbial breakdown of residue
- Preserves residue cover, reducing soil erosion and keeping stalks in place in windy conditions
- Quick and easy to install with mounting kits for most corn head models
- Features spring-loaded, adjustable down pressure
- Solid steel construction ensures reliability and durability
- Will not interfere with most head cart trailers
- Rollers can be locked up for transport of head or when not in use.



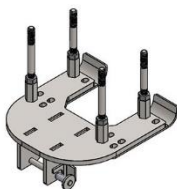
PART #	MODEL / ROW # / LIST PRICE	PRICE EA.
5000-025	JD 643/693/606C / 6 ROW 30" (\$5700 LIST)	CALL FOR DISCOUNT PRICING
5000-026	JD 893, 608C / 8 ROW 30" (\$7600 LIST)	CALL FOR DISCOUNT PRICING
5000-027	JD 612C / 12 ROW 30" (\$11400 LIST)	CALL FOR DISCOUNT PRICING
5000-006	CIH 3208,3408 / 8 ROW 30" (\$7600 LIST)	CALL FOR DISCOUNT PRICING
5000-051	DRAGO 830/ 8 ROW 30" / (\$7600 LIST)	CALL FOR DISCOUNT PRICING
BW209PPB5FS	BEARING	\$ 55.95 EA.
5000-355	Bearing w/ housing	\$ 88.95 EA.
2550-709	SPRING	\$ 33.50 EA.

STALK STOMPERS FOR CORN HEADS

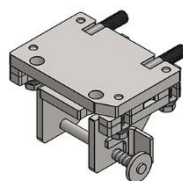


PART #	MODEL TO FIT:	DESCRIPTION	PRICE PER ROW
NDYSA- / /	CNH, JD, GERINGHOFF	SINGLE ASSEMBLY COMPLETE	\$ 439
NDYSA-DR	DRAGO	6 ROWS OR MORE W/ MOUNTS	\$ 419.- \$499
NDYSA-DR1	DRAGO SER. 1 & 2	SINGLE ASSEMBLY COMPLETE	\$ 439.00
99203	ALL	TORSION SPRING	\$ 23.00
99216	ALL	SPRING LOADED PULL PIN	\$ 12.95

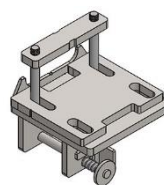
***FREIGHT CHARGES MAY BE APPLIED TO NON-STOCKED STOMPER KITS!**



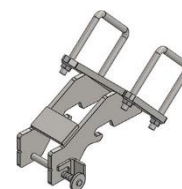
GERINGHOFF



JD 40/90 SERIES



JD 600 SERIES



CNH 4000 SERIES

- **One pin quick release**
- **Standard three position mount**
- **Case hardened inner and outer bushings**
- **Mounts using existing gearbox bolts**
- **Optional storage mounts**
- **Black or yellow poly option**
- **14" twin row shoes available**



Please Call For Availability.
PRICES SUBJECT TO CHANGE WITHOUT NOTICE!