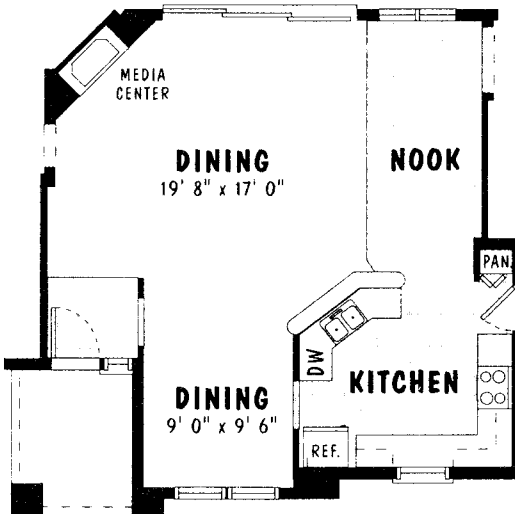


OPTIONAL  
MASTER BATH



OPTIONAL  
DINING  
ROOM

# THE SANIBEL

## STANDARD FLOORPLAN

### 3 Bedrooms / 2 Baths

(Floorplan Shown in Block Version)

**Block:** Living Area 1907 sf • Total Area 2661 sf  
(Frame elevation not available in all communities.)

Classic in style and grand in scale, the Sanibel has all the amenities and open space needed for great entertaining. This 3 Bedroom Split Plan with 2 Bedroom/Den Option revolves around an impressive Great Room which opens to a spacious Kitchen and Breakfast Nook. Finishing touches, like a built-in media center, decorator niches and arched doorways, create a comfortable sense of elegance in the living areas.

Equally grand and well-suited for entertaining are the 16' sliding glass doors that open to an oversized Lanai. The Guest Wing features large Bedrooms with walk-in closets. A secluded Master Suite, complete with an amenity-rich Master Bath, offers an atmosphere of luxury and privacy.

## HIGHLIGHTS

- 2 Bedrooms with Den or 3 Bedroom Split Plan with 2 Baths
- Expansive Great Room & Screened Lanai
- Distinctive Morning Room or Family Room
- Built-In Media Center in Great Room
- 9'4" Ceilings in Living Areas & Master Suite
- Alternate 2 Bedroom Plan with Deluxe Master Suite
- Air Conditioned Laundry Room
- 2 Car Garage

Pringle Development • So. Hwy. 27, 26600 Ace Ave., Leesburg, FL 34748 • 1 (800) 325-4471 • (352) 365-2303 • [www.pringle.com](http://www.pringle.com)

Pringle Construction Company: CG C056993 Builder of custom homes at Riverside, Scottish Highlands, Highland Lakes, Royal Highlands, Royal Harbor, Legacy of Leesburg and other fine communities.

Because we continually strive to find new ways to improve and change our homes, we reserve the right to change specifications, brands, and architectural details without notice. Dimensions may also vary from those shown in this sales literature and some features depicted may not be included as standard when you buy your home.

