



**STEEL SCUFF LINERS**

PART #	ITEM
FW1901	16" x 10ft (10 gauge steel) sheet
FW1902	16" x 10ft (1/4" thickness) sheet

Engineered for truck or trailer fleets requiring extreme duty protection for sidewalls and flooring. Full-length (non-welded) scuff has no seams to snag and all holes are countersunk to protect fasteners. Call today for more information

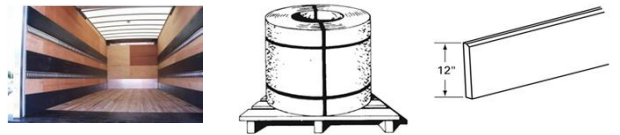
Extremely durable galvanized steel  
 Seamless, solid, full-length scuff (no welding)  
 Top edge offset to protect fasteners  
 Floor lip turn down to increase scuff life and provide a snag free surface



**POLY SCUFF LINERS**

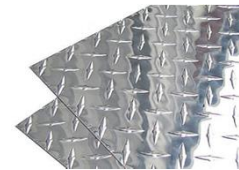
PART #	ITEM
FW1903	12" x 53ft. (3/8" thickness) Poly Scuff Liner Roll
FW1904	18" x 53ft. (3/8" thickness) Poly Scuff Liner Roll

Poly Scuff Liner is used to extend the life of semi trailer walls, and eliminate the chance for product damage/loss. Scuff is also used for radius concrete forms and Race track barrier walls.



**CHECKER PLATES**

Checker Plate is a type of lightweight metal sheet with a regular pattern of raised diamonds or lines on one side. Checker plates are available in a galvanized plate, aluminum plate or stainless steel plates. Checker plate has a variety of uses mainly on floor boards, factory stair boards, loading ramps, building storage system or any area where an anti-slip flooring is necessary.



All thicknesses of checker plate are normally kept in stock in 4'x8' sheets. Some thicknesses may also be stocked in 4'x10' or 5'x10'. Call for availability. Call today for more information



**ANGLE IRON**

Steel angle bar is a hot rolled, mild steel angle shape with inside radius corners that is ideal for all structural applications, general fabrication and repairs. Steel Angle is used in industrial maintenance, agricultural implements, transportation equipment, etc.



Please call us today for pricing and sizing. When you contact us, please provide your detail requirements. That will help us give you a valid quotation.