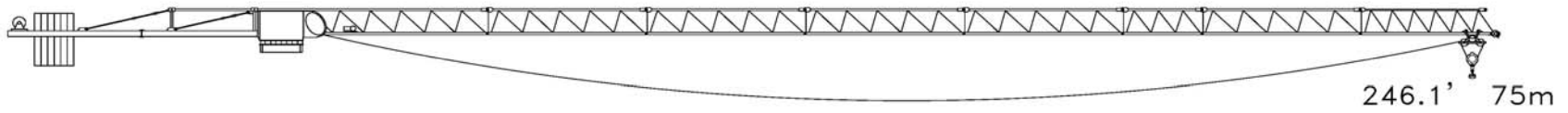
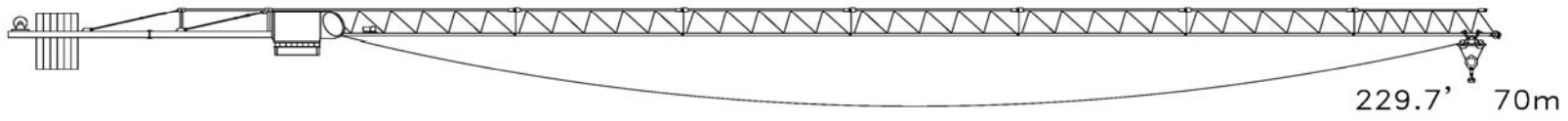


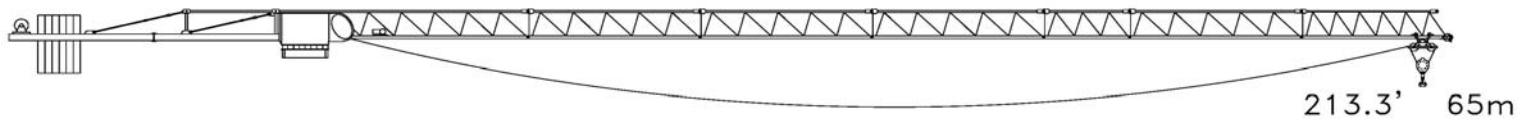
RADIUS & CAPACITY (m)		MAX LOAD	DIST (m)	25	30	35	40	45	50	55	60	65	70	75	80
(2 part line, m/ton)		6	31	6	6	5.19	4.43	3.9	3.37	3.02	2.67	2.4	2.17	1.97	1.8
(4 part line, m/ton)		12	16.8	7.5	6.02	4.97	4.19	3.65	3.1	2.75	2.39	2.11	1.88	1.68	1.5
RADIUS & CAPACITY (ft)		MAX LOAD	DIST (ft)	82.02	98.43	114.83	131.23	147.64	164.04	180.45	196.85	213.25	229.66	246.06	262.47
(2 part line, lbs)		13,228	101.71	13,228	13,228	11,442	9,766	8,598	7,430	6,658	5,886	5,291	4,784	4,343	3,968
(4 part line, lbs)		26,455	55.12	16,535	13,272	10,957	9,237	8,047	6,834	6,063	5,269	4,652	4,145	3,704	3,307



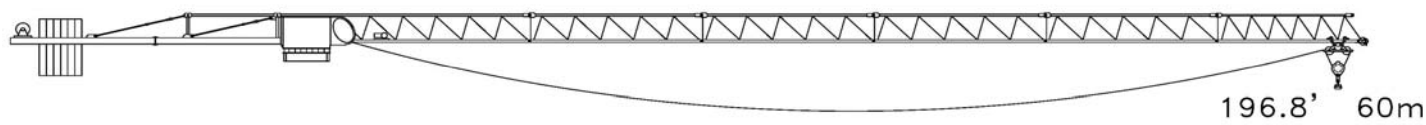
RADIUS & CAPACITY (m)		MAX LOAD	DIST	25	30	35	40	45	50	55	60	65	70	75
(2 part line, m/ton)		6	37.5	6	6	6	5.57	3.9	4.29	3.87	3.44	3.12	2.84	2.6
(4 part line, m/ton)		12	19.9	9.22	7.45	6.21	5.28	4.64	3.99	3.57	3.14	2.82	2.54	2.3
RADIUS & CAPACITY (ft)		MAX LOAD	DIST	82.02	98.43	114.83	131.23	147.64	164.04	180.45	196.85	213.25	229.66	246.06
(2 part line, lbs)		13,228	123.03	13,228	13,228	13,228	12,280	8,598	9,458	8,532	7,584	6,878	6,261	5,732
(4 part line, lbs)		26,455	65.29	20,327	16,424	13,691	11,640	10,229	8,796	7,871	6,923	6,217	5,600	5,071



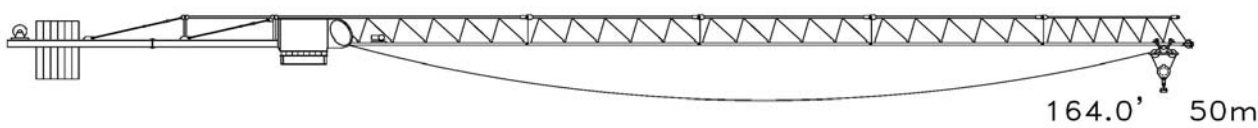
RADIUS & CAPACITY (m)		MAX LOAD	DIST	25	30	35	40	45	50	55	60	65	70
(2 part line, m/ton)		6	42.1	6	6	6	6	3.9	4.92	3.02	3.97	3.61	3.3
(4 part line, m/ton)		12	22	10.35	8.41	7.04	6.02	5.31	4.6	4.13	3.66	3.31	3
RADIUS & CAPACITY (ft)		MAX LOAD	DIST	82.02	98.43	114.83	131.23	147.64	164.04	180.45	196.85	213.25	229.66
(2 part line, lbs)		13,228	138.12	13,228	13,228	13,228	13,228	8,598	10,847	6,658	8,752	7,959	7,275
(4 part line, lbs)		26,455	72.18	22,818	18,541	15,521	13,272	11,707	10,141	9,105	8,069	7,297	6,614



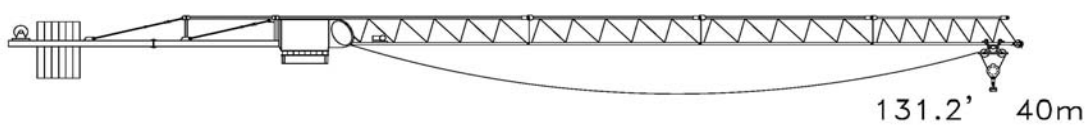
RADIUS & CAPACITY (m)		MAX LOAD	DIST	25	30	35	40	45	50	55	60	65
(2 part line, m/ton)		6	43.7	6	6	6	6	5.58	5.15	4.66	4.17	3.8
(4 part line, m/ton)		12	23.1	10.97	8.93	7.5	6.43	5.69	4.95	4.46	3.97	3.6
RADIUS & CAPACITY (ft)		MAX LOAD	DIST	82.02	98.43	114.83	131.23	147.64	164.04	180.45	196.85	213.25
(2 part line, lbs)		13,228	143.37	13,228	13,228	13,228	13,228	12,302	11,354	10,274	9,193	8,378
(4 part line, lbs)		26,455	75.79	24,185	19,687	16,535	14,176	12,544	10,913	9,833	8,752	7,937



RADIUS & CAPACITY (m)		MAX LOAD	DIST	25	30	35	40	45	50	55	60
(2 part line, m/ton)		6	47.5	6	6	6	6	5.83	5.65	5.13	4.6
(4 part line, m/ton)		12	24.8	11.87	9.7	8.15	7.03	6.24	5.44	4.92	4.4
RADIUS & CAPACITY (ft)		MAX LOAD	DIST	82.02	98.43	114.83	131.23	147.64	164.04	180.45	196.85
(2 part line, lbs)		13,228	155.84	13,228	13,228	13,228	13,228	12,853	12,456	11,310	10,141
(4 part line, lbs)		26,455	81.36	26,169	21,385	17,968	15,498	13,757	11,993	10,847	9,700



RADIUS & CAPACITY (m)		MAX LOAD	DIST	25	30	35	40	45	50
(2 part line, m/ton)		6	50	6	6	6	6	6	6
(4 part line, m/ton)		12	26.2	12	10.3	8.86	7.47	6.64	5.8
RADIUS & CAPACITY (ft)		MAX LOAD	DIST	82.02	98.43	114.83	131.23	147.64	164.04
(2 part line, lbs)		13,228	164.04	13,228	13,228	13,228	13,228	13,228	13,228
(4 part line, lbs)		26,455	85.96	26,455	22,708	19,533	16,469	14,639	12,787



RADIUS & CAPACITY (m)		MAX LOAD	DIST	25	30	35	40
(2 part line, m/ton)		6	40	6	6	6	6
(4 part line, m/ton)		12	27.8	12	10.95	9.22	8
RADIUS & CAPACITY (ft)		MAX LOAD	DIST	82.02	98.43	114.83	131.23
(2 part line, lbs)		13,228	131.23	13,228	13,228	13,228	13,228
(4 part line, lbs)		26,455	91.21	26,455	24,141	20,327	17,637