

# Weekly Major Equity Indexes Charts Newsletter

April 17, 2017

The Weekly Equity Indexes Charts Newsletter provides Cornelius Luca's trade ideas, model signals, and absolute charts

© 2017 Luca Global Markets, LLC. All rights reserved. This content is provided as general information only and does not constitute investment advice or a representation that any investment, security or other product is suitable for any person. This content reflects the opinions only of the author and cannot be interpreted as advice.

This content is the intellectual property of Cornelius Luca. Any copying, distribution or redistribution of this content is expressly prohibited without the prior written consent of Cornelius Luca.

Cornelius Luca shall not be liable for any errors in the content, or for any actions taken in reliance thereon.

# Trade Ideas

- G7: Long S&P 500 only if above the 21-day exponential moving average
- G7: Short Borsa Italiana while below the 21-day exponential moving average
- BRIC: Short Bovespa while below the 21-day exponential moving average

# G7 Equity Indexes

## Model Signals - Daily & Weekly

	<i>Daily Model</i>	since	Daily Bias (> or < 21-day EMA)	Daily Risk	<i>Weekly Model</i>	since	Weekly Bias (> or < 21-week EMA)	Weekly Risk
<b>S&amp;P 500</b>	<b>L</b>	17-Apr	slightly bearish	slightly bullish	<b>S</b>	7-Apr	slightly bullish	slightly bearish
<b>Geman DAX</b>	<b>S</b>	5-Apr	slightly bearish	slightly bearish	<b>S</b>	7-Apr	<b>bullish</b>	slightly bearish
<b>UK FTSE</b>	<b>S</b>	12-Apr	sideways	neutral	<b>S</b>	12-Apr	slightly bullish	slightly bullish
<b>France CAC</b>	<b>S</b>	10-Apr	slightly bullish	slightly bearish	<b>S</b>	10-Apr	<b>bullish</b>	slightly bearish
<b>Italy Borsa Italiana</b>	<b>S</b>	10-Apr	<b>bearish</b>	slightly bearish	<b>S</b>	7-Apr	<b>bullish</b>	slightly bearish

Source: Proprietary Luca Global Markets, LLC Model

# S&P 500

## Comment:

**Long the S&P 500** only if above the 21-day EMA

- Of concern remains the Elliott Wave reading of the 5<sup>th</sup> of 5<sup>th</sup> on 3/1
- The model has been short since 3/29
- Immediate support: 2,322
- Further support: 2,305 & 2,245
- Initial resistance: 2,351
- Further resistance: 2,378 & 2,401 (top)
- Fast stochastics: bearish
- MACD: bearish



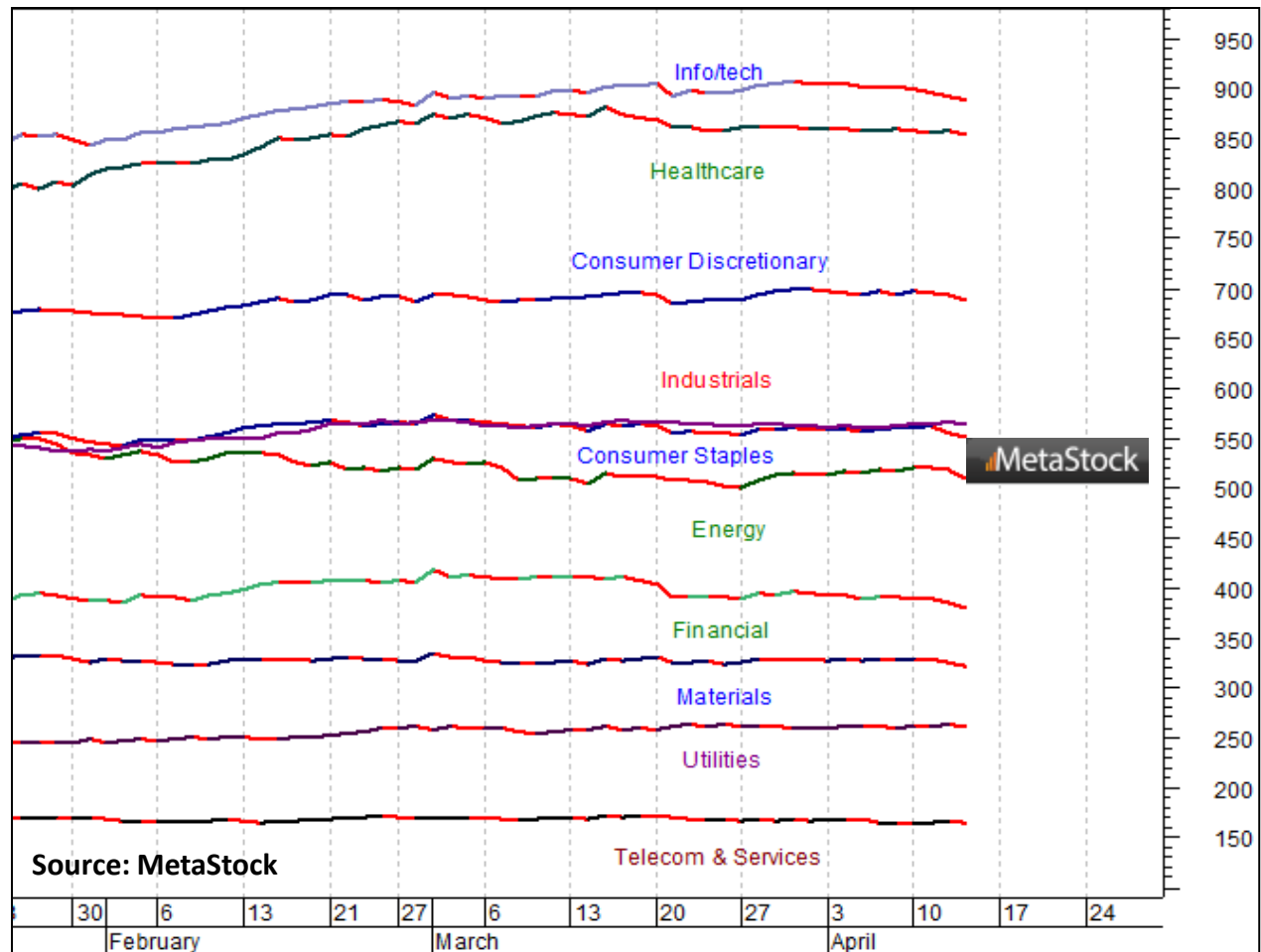
CQG Inc. © 2017 All rights reserved worldwide. <http://www.cqg.com>

Mon Apr 17 2017 10:31:27, CQG 17.12.860

# S&P 500 - Sectors

**Comment:**

Nearly all S&P 500 sectors are down amid political Uncertainty.



# G7 Equity Index Trade Idea

**Comment:**

**Short Borsa Italiana while below the 21-day EMA**

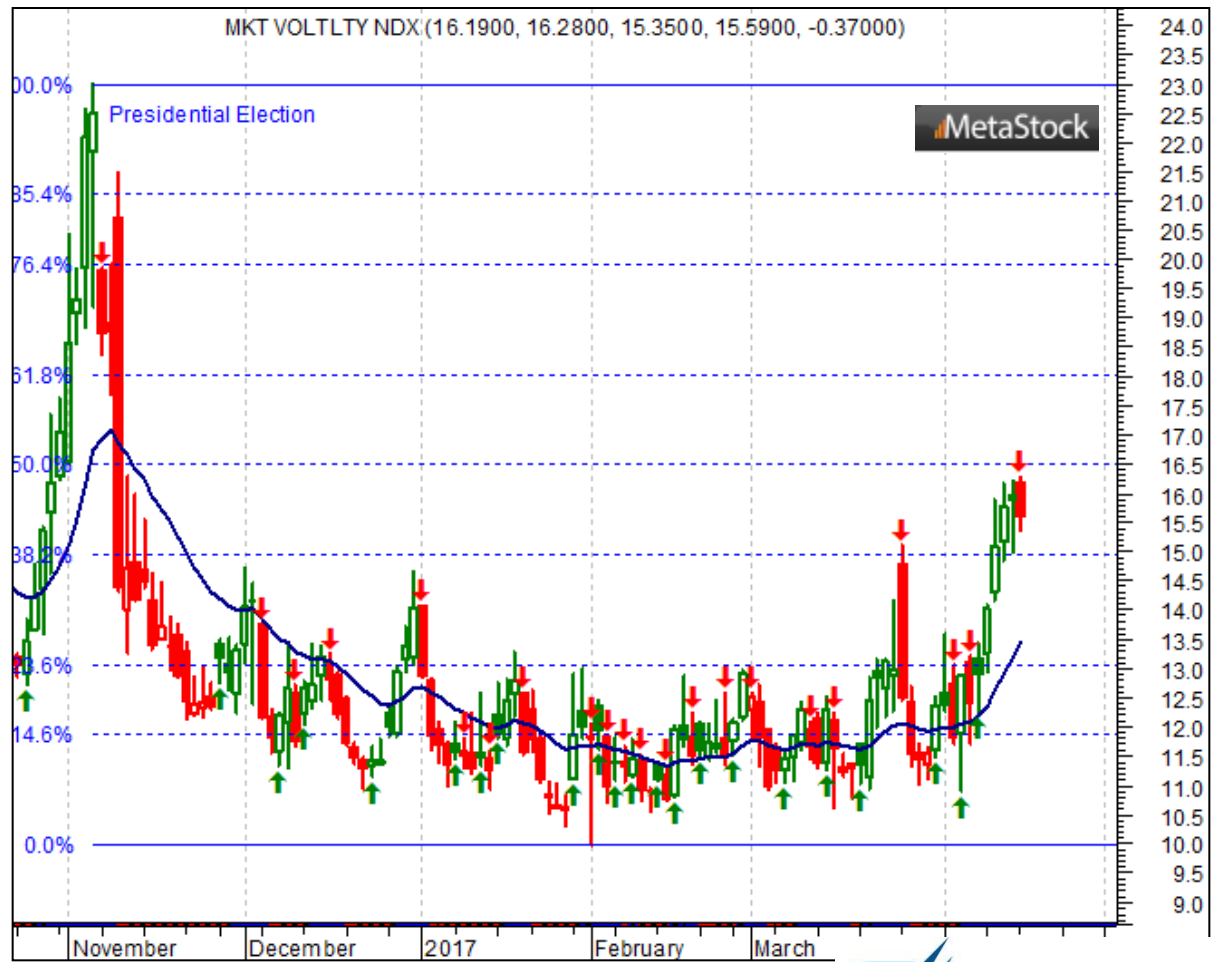
- The Borsa Italiana should trade below the 21-day EMA after breaking a key Gann fan line
- The model remains short
- Immediate support: 19,493
- Further support: 18,886
- Initial resistance: 20,060
- Further resistance: 20,540
- Fast stochastics: bearish



# S&P 500 - VIX

**Comment:**

The VIX reversed from a 5-month high.



# BRIC Equity Indexes

## Model Signals - Daily & Weekly

<i>BRIC Index</i>	<i>Daily Model</i>	since	Daily Bias (> or < 21-day EMA)	Daily Risk	<i>Weekly Model</i>	since	Weekly Bias (> or < 21-week EMA)
Brazil	L	17-Apr	slightly bearish	slightly bullish	L	17-Apr	sideways
Russia	L	17-Apr	slightly bearish	slightly bullish	L	17-Apr	slightly bearish
India	S	12-Apr	slightly bearish	slightly bearish	S	10-Apr	bullish
China-Shanghai	S	12-Apr	slightly bearish	slightly bearish	S	12-Apr	slightly bullish

Source: Proprietary Luca Global Markets, LLC Model



# BRIC Equity Index Trade Idea

## Comment:

### Short Bovespa while below the 21-day EMA

- The Bovespa is seeking a bottom above the low of 3/22
- It trades below the 21-day exponential moving average and is oversold
- Immediate support: 62,496
- Further support: 61,685
- Initial resistance: 64,461
- Further resistance: 66,211
- Fast stochastics: bearish



# How to Use the Heat Map

Bias: If the Candle > 21-period EMA = bullish  
 If the Candle < 21-period EMA = bearish  
 If the Candle around 21-period EMA = sideways

Long or Short

Since when

Risk: Bullish or Bearish  
 Candle as of Monday am EST

	Commodities	Daily Model	since	Daily Bias (> or < 21-day EMA)	Daily Risk	Weekly Model	since	Weekly Bias (> or < 21-day EMA)	Weekly Risk
Energy	Crude (CLc1)	S	27-Apr	bullish	slightly bullish	L	23-Mar	slightly bearish	slightly bullish
	Brent (LCOc1)	L	21-Apr	slightly bullish	slightly bullish	L	6-Apr	slightly bearish	slightly bullish
	Natural gas (NGc1)	S	23-Apr	bearish	bearish	S	20-Apr	bearish	slightly bearish
	Palm oil (FCPOc1)	L	24-Apr	sideways	neutral	S	20-Apr	slightly bearish	slightly bearish
Metals	Gold (GCc1)	S	24-Apr	bearish	bearish	S	20-Mar	slightly bearish	slightly bearish
	Silver (SIc1)	S	22-Apr	bearish	bearish	S	24-Apr	bearish	bearish
	Platinum (PLc1)	S	20-Apr	bearish	bearish	S	20-Mar	bearish	slightly bullish
	Copper (HGc1)	L	24-Apr	slightly bearish	slightly bullish	S	24-Apr	slightly bearish	slightly bearish
Softs	Coffee (KCN5)	L	24-Apr	sideways	neutral	L	24-Apr	slightly bullish	slightly bullish
	Cocoa (LCCN5)	L	23-Apr	bullish	bullish	L	13-Apr	bullish	bullish
	Soy meal (SMN5)	S	24-Apr	bearish	slightly bearish	S	24-Apr	bearish	slightly bearish
	Wheat (WN5)	S	24-Apr	bearish	slightly bearish	S	24-Apr	bearish	bearish
	Corn (CN5)	S	20-Apr	bearish	bearish	S	6-Apr	bearish	bearish

Source: Proprietary Luca Global Markets, LLC Model

L = long  
 S = short