

ANGUS BULLS & *Heifers* BACKED BY  
**MATERNAL POWER<sup>®</sup>**  
Feb. 15, 2025 • 3 p.m. • At the Ranch, Solen, ND

*Selling*

100 YEARLING & 2-YEAR-OLD ANGUS BULLS · 17 REGISTERED HEIFERS · 50 COMMERCIAL HEIFER CALVES





The ideal Angus cow is hard to make, but when she's backed by  
**MATERNAL POWER<sup>®</sup>, SHE'S HARD TO BEAT!**

What  
**MATERNAL  
POWER<sup>®</sup>**

means to us:

Scan this QR code with  
your smart phone's  
camera app to one of  
three videos about  
Strommen Ranch!



We invite you to attend our  
**2025 Maternal POWER<sup>®</sup> Angus Bull Sale**  
3 p.m., FEB. 15, 2025, Solen, ND.  
Call or text Aaron (701) 290-7983 with  
any questions about the offering!

**WE ARE EAGER TO EARN YOUR  
TRUST, FRIENDSHIP AND BUSINESS.**





**PROVEN, BALANCED  
COW-MAKERS**  
Our cattle are backed by generations of proven, efficient genetics, emphasizing calving ease, fleshing ability, productivity, udder & foot quality, disposition, structure and fertility.





# MATERNAL POWER® ANGUS BULL SALE

AT THE RANCH · FEB 15, 2025 · 3 P.M. · SOLEN, ND

## SALE DAY PHONES

Aaron's Cell.....(701) 290-7983  
Sheyna's Cell.....(701) 290-3886  
Kayla's Cell.....(612) 723-9776

## SALE STAFF

Kyle Shobe, Auctioneer.....(406) 366-0472  
Kris Peterson.....(701) 339-0305  
Todd Finke.....(701) 240-7711  
Devin Murnin.....(406) 696-1502

**SALE ORDER** • We will follow consecutive sale book order.

**TERMS AND CONDITIONS** • All animals sell under the standard terms and conditions of the American Angus Association. Terms of the sale are cash. Full payment is due on sale day, unless prior arrangements have been made.

**BULL DEVELOPMENT** • These bulls have been handled correctly and developed without ANY creep. They have been fed just enough to express genetic differences, but not overfed as to compromise soundness or longevity. We want you to have a bull that will do his job and last for years. We believe our 90-day breeding season guarantee, detailed below, is among the best in the industry.

**EPDS** • EPDs are current as of Jan. 21, 2025.

**SALE TIME & LUNCH** • The sale starts at 3 p.m. CST. Please join us for lunch beginning at 1 p.m. and remain with us after the sale for fellowship and refreshments.

**MATERNAL POWER®** is a federally registered trademark of Strommen Ranch.

**FEEDING & DELIVERY** • We will keep all bulls free of charge until delivery. Deliveries start May 1st. We ask that you work with us so that we can deliver bulls in the most efficient manner. We offer free delivery within 500 miles of the ranch.

**HEALTH** • All bulls have been on a complete health program as prescribed by Dr. Pat Bierman of the Mandan Vet Clinic, Mandan, N.D. Bulls have been given a vaccination for foot rot and will be boosted when they are fertility tested.

**FERTILITY** • All bulls will pass a fertility exam performed by Dr. Bierman before delivery.

**SIGHT UNSEEN PURCHASES** • If you are unable to attend the sale, but wish to place a bid, feel free to call us and we will handle your bid as if you were here. If you wish to be on the phone during the sale, we will try to accommodate your request. Please let us know in advance so arrangements can be made. We have also partnered with DVAuction to offer online bidding and purchasing options. All sight unseen purchases are fully guaranteed.

**SIRE GROUPS** • For our customers who are looking to put together a set of closely related herd sires, we are offering many 1/2, 3/4 and full brothers.

**LIABILITY** • Anyone attending this sale does so at their own risk. Neither the owners nor anyone connected to this sale, assumes any liability, legal or otherwise.



**DIRECTIONS TO THE SALE** • From the city of Solen, ND, go North on Rice Street for 1 mile. Turn East on 70th Street (just before the cemetery at the crest of the hill) for 3 miles.

**DVAuction**  
Broadcasting Real-Time Auctions

We've partnered with DVAuction.  
See page 11 for details.

Videos of the bulls will be available on our website [www.StrommenRanch.com](http://www.StrommenRanch.com)

**GUARANTEE** • Strommen Ranch is very confident that we have developed these bulls safely. They have been fed just enough to express genetic differences, but not overfed as to compromise soundness or longevity. **We want you to have a bull that will do his job and last for years.** It is important to us that these bulls not only perform from birth to yearling, but from birth through breeding. It is with this confidence in our bulls that we can give our full 90-day breeding season guarantee. We understand that these are animals and that injuries do occur, but we have the utmost confidence that we have developed these bulls in the best way to protect your investment. If an injury or death occurs, Strommen Ranch will guarantee them for the purchase price minus salvage value (\$2,500), or we will provide a replacement bull, if a suitable bull is available.

We don't make you take out an insurance policy and add that to the purchase price. We don't have a formula to take away half of the value of the bull if injury occurs. At the same time, these are not 'disposable' bulls. We expect you to care for your investment in your Strommen Ranch bull, so that if a problem does occur, the most appropriate and timely care is taken. If the bull happens to get injured, or you are unsatisfied with your purchase for any reason, we want to know so we can take care of the issue in a timely manner. All injured bulls must be diagnosed by a veterinarian and any claims must be made by Sept. 15, 2025. **We are committed to our customers and your success.**

Catalog/ads/website by *Strommen Livestock Services* • Solen, ND • (701) 290-3886







OUR 2025 SALE FEATURES THE INFLUENCE OF THESE  
**POWERFUL, PROVEN BULLS**



BC ROBUST 0807 • AAA 18456252  
CE +3 • BW +2.4 • WW +67 • YW +100 • MILK +9



BRUIN TORQUE 5261 • AAA 18248293  
CE +7 • BW +2.5 • WW +57 • YW +115 • MILK +23



SR SILVERADO 083 • AAA 19932195  
CE +6 • BW +2.3 • WW +69 • YW +132 • MILK +25



S A V LANDMARK 9148 • AAA 19542356  
CE -2 • BW +3.4 • WW +86 • YW +145 • MILK +7



S A V GLORY DAYS 1832 • AAA 20161297  
CE +0 • BW +5.4 • WW +84 • YW +149 • MILK +21



SAV EASY STREET 2289 • AAA 20473600  
CE +14 • BW -2.0 • WW +66 • YW +114 • MILK +21

**MANY FULL, 3/4 & 1/2 BROTHERS SELL!**

**OTHER SIRES INCLUDE:** LT Firesteel 1123 • Limestone Real Mc Coy W831







LOT 1 • S R ROBUST 470

LOT 1

## S R ROBUST 470

BD: 3/8/2024

Reg #: 21153365

BC Surveyor 680D	#BC Eagle Eye 110-7	Dam's Prod.	5/110
<b>BC Robust 0807</b>	BC 2266 Prides Lass 4132 680	Calving Interval	365
BC 327-8 CP Belle 0-807	BC Pure Pride 327-8	Udder	10
	BC 607 CP Belle MF 807	Docility	10
#S A V Resource 1441	Rito 707 of Ideal 3407 7075		
<b>S R Polly 7110</b>	S A V Blackcap May 4136		
S R Polly 804	#Sitz Alliance 6595		
	#SR Polly 323		

BW	Adj. 205	WWR	CE	BW	WW	YW	Milk
79	774	ET	3	2.8	67	114	20



S R Polly 7110 • Dam of Lot 1

BUILDING A *profitable cow herd*  
TAKES **GENERATIONS.**

It's not as easy as using a big-numbered bull that hopefully stands up to the maternal traits the EPDs say he has. **The proof is in the cow herd that remains.**



S R Polly 804 • Maternal Granddam of Lot 1





**LOT 2 • S R ROBUST 441**

**LOT 2** **S R ROBUST 441**  
 BD: 3/5/2024 Reg #: 21153396

BC Surveyor 680D	#BC Eagle Eye 110-7	Dam's Prod.	6/107
<b>BC Robust 0807</b>	BC 2266 Prides Lass 4132 680	Calving Interval	365
BC 327-8 CP Belle 0-807	BC Pure Pride 327-8	Udder	9.5
	BC 607 CP Belle MF 807	Docility	9
#S A V Resource 1441	Rito 707 of Ideal 3407 7075		
<b>#S R Miss Wix 680</b>	S A V Blackcap May 4136		
#S R Miss Wix 3110	#GDAR Game Day 449		
	#Miss Wix 145 of Circle V		

BW	Adj. 205	WWR	CE	BW	WW	YW	Milk
85	754	110	3	2.8	68	116	18

**LOT 3** **S R ROBUST 4547**  
 BD: 3/20/2024 Reg #: 627888491

BC Surveyor 680D	#BC Eagle Eye 110-7	Dam's Prod.	6/107
<b>BC Robust 0807</b>	BC 2266 Prides Lass 4132 680	Calving Interval	365
BC 327-8 CP Belle 0-807	BC Pure Pride 327-8	Udder	9.5
	BC 607 CP Belle MF 807	Docility	9
#S A V Resource 1441	Rito 707 of Ideal 3407 7075		
<b>#S R Miss Wix 680</b>	S A V Blackcap May 4136		
#S R Miss Wix 3110	#GDAR Game Day 449		
	#Miss Wix 145 of Circle V		

BW	Adj. 205	WWR	CE	BW	WW	YW	Milk
92	770	ET	2	3.2	64	110	19

EPDs for Lot 3 are parent average.

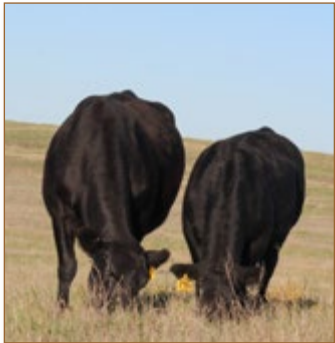


*S R Miss Wix 680 • Dam of Lots 2-3*



**LOT 3 • S R ROBUST 4547**





*S R Kinochtry Beauty 7123*  
*Dam of Lot 4.*



**LOT 4 • S R ROBUST 4169**

**LOT 4**

**S R ROBUST 4169**

BD: 3/28/2024 Reg #: 21153353

BC Surveyor 680D  
**BC Robust 0807**  
 BC 327-8 CP Belle 0-807

#BC Eagle Eye 110-7  
 BC 2266 Prides Lass 4132 680  
 BC Pure Pride 327-8  
 BC 607 CP Belle MF 807  
 #O C C Emblazon 854E  
 O C C Dixie Erica 903E  
 N Bar Shadow X4124  
 Sinclair K BTY 5P113 3S57

Dam's Prod.	6/100
Calving Interval	363
Udder	9
Docility	9

#O C C Juneau 807J  
**S R Kinochtry Beauty 7123**  
 Sinclair K Bty 7S13 5P113

BW	Adj. 205	WWR	CE	BW	WW	YW	Milk
92	717	ET	4	1.4	58	88	16



**LOT 5 • S R ROBUST 449**

**LOT 5**

**S R ROBUST 449**

BD: 3/6/2024 Reg #: 21153475

BC Surveyor 680D  
**BC Robust 0807**  
 BC 327-8 CP Belle 0-807

#BC Eagle Eye 110-7  
 BC 2266 Prides Lass 4132 680  
 BC Pure Pride 327-8  
 BC 607 CP Belle MF 807  
 #Sitz Alliance 6595  
 #Sitz Traveler 8180  
 #Sitz Barbaramere Jet 2698  
 #O C C Emblazon 854E  
 #M H Polly 817

#Sitz Alliance 6595  
**S R Polly 804**  
 #SR Polly 323

Dam's Prod.	6/113
Calving Interval	352
Udder	10
Docility	10

BW	Adj. 205	WWR	CE	BW	WW	YW	Milk
88	685	ET	4	1.9	59	94	21



*Left: 3/4 view of Lot 5*  
*Right: S R Polly 804*  
*Dam of Lot 5*







LOT 6 • S R ROBUST 463

LOT 6

**S R ROBUST 463**

BD: 3/8/2024

Reg #: 21153445

BC Surveyor 680D  
**BC Robust 0807**  
 BC 327-8 CP Belle 0-807  
 #S A V Resource 1441  
**S R Beauty 529**  
 S R Beauty 425

#BC Eagle Eye 110-7  
 BC 2266 Prides Lass 4132 680  
 BC Pure Pride 327-8  
 BC 607 CP Belle MF 807  
 Rito 707 of Ideal 3407 7075  
 S A V Blackcap May 4136  
 #O C C Emblazon 854E  
 M H Beauty 9121

Dam's Prod.	8/93
Calving Interval	365
Udder	7
Docility	7

BW	Adj. 205	WWR	CE	BW	WW	YW	Milk
102	805	117	-3	5.1	75	123	11

LOT 7

**S R ROBUST 478**

BD: 3/9/2024

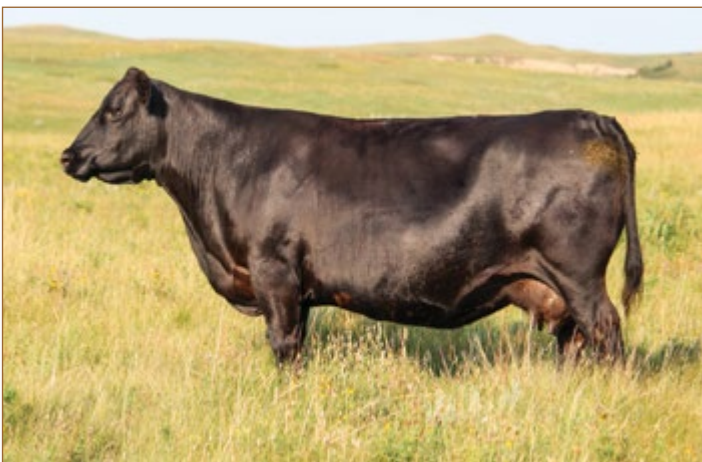
Reg #: 21153442

BC Surveyor 680D  
**BC Robust 0807**  
 BC 327-8 CP Belle 0-807  
 #S A V Resource 1441  
**#S R Lucy 535**  
 S R Lucy 951

#BC Eagle Eye 110-7  
 BC 2266 Prides Lass 4132 680  
 BC Pure Pride 327-8  
 BC 607 CP Belle MF 807  
 Rito 707 of Ideal 3407 7075  
 S A V Blackcap May 4136  
 #O C C Great Plains 943G  
 #S R Lucy 646

Dam's Prod.	8/104
Calving Interval	365
Udder	8.5
Docility	8

BW	Adj. 205	WWR	CE	BW	WW	YW	Milk
88	700	102	2	3.1	67	111	15



S R Beauty 425 • Maternal Granddam of Lot 6



S R Lucy 951 • Maternal Granddam of Lot 7

Photos of the sale lots and the vast majority of the support photos in this book were captured by us. We are far from being professional livestock photographers, and make no apologies for it. We enjoy giving you a realistic, jeans-and-boots representation of our cattle.







LOT 8 • S R ROBUST 452

LOT 8

**S R ROBUST 452**

BD: 3/7/2024

Reg #: 21153191

BC Surveyor 680D  
**BC Robust 0807**  
 BC 327-8 CP Belle 0-807  
 #C C A Emblazon 702  
**S R Lady Blue 979**  
 S R Lady Blue 7153

#BC Eagle Eye 110-7  
 BC 2266 Prides Lass 4132 680  
 BC Pure Pride 327-8  
 BC 607 CP Belle MF 807  
 #O C C Emblazon 854E  
 Limestone Blackcap R128  
 #Sinclair Emulation XXP  
 #S R Lady Blue 203

Dam's Prod.	4/104
Calving Interval	363
Udder	10
Docility	10

BW	Adj. 205	WWR	CE	BW	WW	YW	Milk
81	764	111	6	1.7	68	109	16



CCA Emblazon 702 • Maternal Grand sire of Lot 8



**DVAuction**  
 Broadcasting Real-Time Auctions

Can't make the sale? Bid from home with DVAuction's "real-time" internet bidding service! Buying online is as easy as 1, 2, 3...

1. Create an account at [www.dvauction.com](http://www.dvauction.com) under the "register" tab.
2. Apply for bidding approval by clicking on the "details" tab at least 24 hours prior to the auction - a DV representative will notify you when you are approved.
3. Tune in for the sale and make your purchases!

After the sale, contact Aaron to arrange transportation and payment. High speed internet is required for successful bidding - be sure to check the lag-time monitor in the top left corner to ensure real-time broadcasts.

**Proxy Bidding:** If you can't make time to watch the sale, register a proxy bid and DVAuction will represent your bid while you're away. Look for the "proxy bid" tab on the auction listing and fill in your maximum bids. They'll handle the rest!

**Having troubles?** During the auction, you can type a message to the operator at any time for assistance. DVAuction support can always be reached at (402) 474-5557.





LOT 9 • S R GLORY DAYS 404

LOT 9

**S R GLORY DAYS 404**

BD: 2/22/2024

Reg #: 21153338

S A V America 8018  
**S A V Glory Days 1832**  
 #S A V Madame Pride 3145  
 #Sinclair Emulation XXP  
**#S R Lady Blue 7107**  
 S R Lady Blue 118

#S A V President 6847  
 S A V Madame Pride 0075  
 #S A V Priority 7283  
 S A V Madame Pride 1171  
 #N Bar Emulation EXT  
 #N Bar Primrose Y3051  
 #O C C Paxton 730P  
 #S R Lady Blue 631

Dam's Prod.	6/106
Calving Interval	362
Udder	9
Docility	9

BW	Adj. 205	WWR	CE	BW	WW	YW	Milk
95	766	111	0	4.2	75	129	24



S R Lady Blue 118 • Maternal Granddam of Lot 9

LOT 10

**S R GLORY DAYS 426**

BD: 3/3/2024

Reg #: 21153152

S A V America 8018  
**S A V Glory Days 1832**  
 #S A V Madame Pride 3145  
 #Bruin Torque 5261  
**S R Betty 161**  
 S R Betty 741

#S A V President 6847  
 S A V Madame Pride 0075  
 #S A V Priority 7283  
 S A V Madame Pride 1171  
 #S A V 004 Density 4336  
 Falcon Blackbird 6071  
 #S A V Resource 1441  
 S R Betty 3210

Dam's Prod.	2/104
Calving Interval	365
Udder	9
Docility	10

BW	Adj. 205	WWR	CE	BW	WW	YW	Milk
89	756	110	2	4.3	77	137	22



S R Betty 3210 • Maternal Great Granddam of Lot 10





**LOT 11 • S R GLORY DAYS 454**



*S R Lady Blue 963 • Dam of Lot 11*

**LOT 11 S R GLORY DAYS 454**

BD: 3/7/2024 Reg #: 21153190

S A V America 8018	#S A V President 6847	<b>Dam's Prod.</b>	4/97
<b>S A V Glory Days 1832</b>	S A V Madame Pride 0075		
#S A V Madame Pride 3145	#S A V Priority 7283	<b>Calving Interval</b>	363
	S A V Madame Pride 1171		
#Bruin Torque 5261	#S A V 004 Density 4336	<b>Udder</b>	8.5
<b>S R Lady Blue 963</b>	Falcon Blackbird 6071		
S R Lady Blue 118	#O C C Paxton 730P	<b>Docility</b>	10
	#S R Lady Blue 631		

BW	Adj. 205	WWR	CE	BW	WW	YW	Milk
96	806	117	2	4.3	80	137	21



*Bruin Torque 5261 • Maternal Grand sire of Lots 11-14*

**LOT 12 S R GLORY DAYS 448**

BD: 3/6/2024 Reg #: 21153182

S A V America 8018	#S A V President 6847	<b>Dam's Prod.</b>	3/102
<b>S A V Glory Days 1832</b>	S A V Madame Pride 0075		
#S A V Madame Pride 3145	#S A V Priority 7283	<b>Calving Interval</b>	360
	S A V Madame Pride 1171		
#Bruin Torque 5261	#S A V 004 Density 4336	<b>Udder</b>	8.5
<b>S R Clova Pride 985</b>	Falcon Blackbird 6071		
#S R Clova Pride 5105	#S A V Resource 1441	<b>Docility</b>	8
	S R Clova Pride 260		

BW	Adj. 205	WWR	CE	BW	WW	YW	Milk
91	746	109	3	3.8	75	136	22



**LOT 12 • S R GLORY DAYS 448**

**LOT 13 S R GLORY DAYS 492**

BD: 3/11/2024 Reg #: 21153175

S A V America 8018	#S A V President 6847	<b>Dam's Prod.</b>	3/100
<b>S A V Glory Days 1832</b>	S A V Madame Pride 0075		
#S A V Madame Pride 3145	#S A V Priority 7283	<b>Calving Interval</b>	367
	S A V Madame Pride 1171		
#Bruin Torque 5261	#S A V 004 Density 4336	<b>Udder</b>	9
<b>S R Beauty 0128</b>	Falcon Blackbird 6071		
S R Beauty 765	#S A V Resource 1441	<b>Docility</b>	9
	S R Beauty 333		

BW	Adj. 205	WWR	CE	BW	WW	YW	Milk
98	786	114	-1	5.4	79	144	21

**LOT 14 S R GLORY DAYS 424**

BD: 3/3/2024 Reg #: 21153163

S A V America 8018	#S A V President 6847	<b>Dam's Prod.</b>	3/104
<b>S A V Glory Days 1832</b>	S A V Madame Pride 0075		
#S A V Madame Pride 3145	#S A V Priority 7283	<b>Calving Interval</b>	363
	S A V Madame Pride 1171		
#Bruin Torque 5261	#S A V 004 Density 4336	<b>Udder</b>	10
<b>S R Bonnie Belle 044</b>	Falcon Blackbird 6071		
S R Bonnie Belle 7103	#S A V Resource 1441	<b>Docility</b>	9
	#S R Bonnie Belle 104		

BW	Adj. 205	WWR	CE	BW	WW	YW	Milk
96	700	102	-2	5.6	71	131	22





**LOT 15 • S R GLORY DAYS 4120**



**LOT 16 • S R GLORY DAYS 498**



**LOT 17 • S R GLORY DAYS 466**



*S R Rachel 8110 • Dam of Lots 15-18*

*Flush Brothers*

---

**LOT 15**    **S R GLORY DAYS 4120**  
 BD: 3/14/2024    Reg #: 21153314

BW	Adj. 205	WWR	CE	BW	WW	YW	Milk
95	729	ET	-3	4.7	74	132	23

---

**LOT 16**    **S R GLORY DAYS 498**  
 BD: 3/11/2024    Reg #: 21153200

BW	Adj. 205	WWR	CE	BW	WW	YW	Milk
94	762	ET	-3	5.1	79	138	23

---

**LOT 17**    **S R GLORY DAYS 466**  
 BD: 3/8/2024    Reg #: 21153272

BW	Adj. 205	WWR	CE	BW	WW	YW	Milk
86	713	ET	-3	4.7	74	132	23

---

**LOT 18**    **S R GLORY DAYS 4518**  
 BD: 3/9/2024    Reg #: 21149281

S A V America 8018	#S A V President 6847	Dam's Prod.	5/107
<b>S A V Glory Days 1832</b>	S A V Madame Pride 0075	Calving Interval	364
#S A V Madame Pride 3145	#S A V Priority 7283	Udder	10
	S A V Madame Pride 1171	Docility	10
#Sinclair Emulation XXP	#N Bar Emulation EXT		
<b>#S R Rachel 8110</b>	#N Bar Primrose Y3051		
Reich Rachel 588	#S A V Resource 1441		
	#Reich Eota Lass 798		

---

BW	Adj. 205	WWR	CE	BW	WW	YW	Milk
98	676	ET	-3	4.7	74	132	23



*Reich Rachel 588 • Maternal Granddam of Lots 15-18*

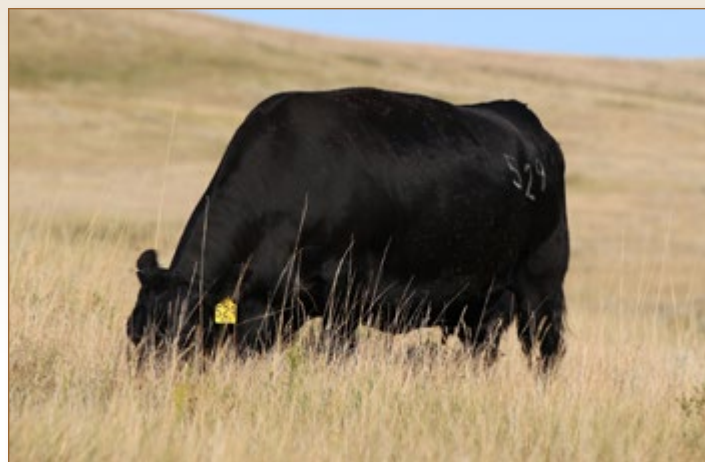
*"We are not the product of our circumstances. We are the product of our DECISIONS."*

-Stephen Covey





S R Rachel 703 • Dam of Lots 19



S R Beauty 529 • Maternal Granddam of Lot 20

**LOT 19 S R GLORY DAYS 413**

BD: 3/2/2024 Reg #: 21153334

S A V America 8018	#S A V President 6847	<b>Dam's Prod.</b>	6/105
<b>S A V Glory Days 1832</b>	S A V Madame Pride 0075		
#S A V Madame Pride 3145	S A V Priority 7283	<b>Calving Interval</b>	364
	S A V Madame Pride 1171	<b>Udder</b>	9.5
#Connealy Reflection	#Bon View New Design 878	<b>Docility</b>	10
<b>#S R Rachel 703</b>	Happy Grill of Conanga 6260		
Reich Rachel 588	#S A V Resource 1441		
	#Reich Eota Lass 798		

BW	Adj. 205	WWR	CE	BW	WW	YW	Milk
89	684	100	0	3.9	71	127	23

**LOT 20 S R GLORY DAYS 453**

BD: 3/7/2024 Reg #: 21153160

S A V America 8018	#S A V President 6847	<b>Dam's Prod.</b>	2/105
<b>S A V Glory Days 1832</b>	S A V Madame Pride 0075		
#S A V Madame Pride 3145	#S A V Priority 7283	<b>Calving Interval</b>	353
	S A V Madame Pride 1171	<b>Udder</b>	10
#Bruin Torque 5261	#S A V 004 Density 4336	<b>Docility</b>	8
<b>S R Beauty 0109</b>	Falcon Blackbird 6071		
S R Beauty 529	#S A V Resource 1441		
	S R Beauty 425		

BW	Adj. 205	WWR	CE	BW	WW	YW	Milk
101	717	104	-3	6.2	72	133	21



S A V Blackcap May 6644 • Maternal Granddam of Lot 21



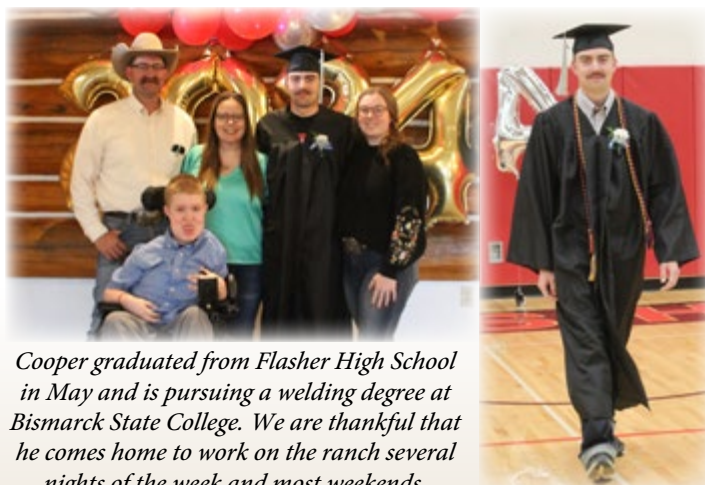
S A V President 6847 • Full Brother to the Granddam of Lot 21

**LOT 21 S R GLORY DAYS 4537**

BD: 3/13/2024 Reg #: 21149279

S A V America 8018	#S A V President 6847	<b>Dam's Prod.</b>	3/105
<b>S A V Glory Days 1832</b>	S A V Madame Pride 0075		
#S A V Madame Pride 3145	#S A V Priority 7283	<b>Calving Interval</b>	376
	S A V Madame Pride 1171	<b>Udder</b>	7
#Sinclair Emulation XXP	#N Bar Emulation EXT	<b>Docility</b>	10
<b>S A V Blackcap May 0502</b>	#N Bar Primrose Y3051		
S A V Blackcap May 6644	#Coleman Charlo 0256		
	S A V Blackcap May 4136		

BW	Adj. 205	WWR	CE	BW	WW	YW	Milk
90	671	ET	1	3.8	75	134	24



Cooper graduated from Flasher High School in May and is pursuing a welding degree at Bismarck State College. We are thankful that he comes home to work on the ranch several nights of the week and most weekends.





LOT 22 • S R EASY STREET 489

**LOT 22**

**S R EASY STREET 489**

BD: 3/10/2024 Reg #: 21153435

S A V Ease 0840  
**S A V Easy Street 2289**  
 S A V Emblynette 9801  
 S A V Rainfall 6846  
**S R Lucy 157**  
 #S R Lucy 993

Marcys Scale Crusher  
 S A V Blackcap May 1416  
 #S A V President 6847  
 S A V Emblynette 0084  
 #Coleman Charlo 0256  
 S A V Blackcap May 4136  
 #Bruin Torque 5261  
 #S R Lucy 535

Dam's Prod.	2/109
Calving Interval	365
Udder	9
Docility	10

BW	Adj. 205	WWR	CE	BW	WW	YW	Milk
74	714	104	10	-0.1	68	121	23

Recommended for use on heifers.

**LOT 23**

**S R EASY STREET 4121**

BD: 3/14/2024 Reg #: 21153397

S A V Ease 0840  
**S A V Easy Street 2289**  
 S A V Emblynette 9801  
 S R Silverado 083  
**S R Rosetta 260**  
 Rosetta 0147 of Best Angus

Marcys Scale Crusher  
 S A V Blackcap May 1416  
 #S A V President 6847  
 S A V Emblynette 0084  
 S A V Rainfall 6846  
 #S R Dorothy Ideal 604  
 Best Winchester 8024  
 #Rosetta 735 of Best Angus

Dam's Prod.	1/113
Calving Interval	1st calf
Udder	9
Docility	9

BW	Adj. 205	WWR	CE	BW	WW	YW	Milk
76	741	113	7	1.2	75	130	25

Recommended for use on heifers.

**LOT 24**

**S R EASY STREET 405**

BD: 2/26/2024 Reg #: 21153406

S A V Ease 0840  
**S A V Easy Street 2289**  
 S A V Emblynette 9801  
 S R Silverado 083  
**S R Dorothy Ideal 220**  
 S R Dorothy Ideal 043

Marcys Scale Crusher  
 S A V Blackcap May 1416  
 #S A V President 6847  
 S A V Emblynette 0084  
 S A V Rainfall 6846  
 #S R Dorothy Ideal 604  
 #Bruin Torque 5261  
 S R Dorothy Ideal 7168

Dam's Prod.	1/115
Calving Interval	1st calf
Udder	9
Docility	10

BW	Adj. 205	WWR	CE	BW	WW	YW	Milk
79	754	115	9	0.7	75	132	25

Recommended for use on heifers.



S A V Rainfall 6846 • Maternal Grand sire of Lot 22

*Here's why* RATIOS MATTER

**CALF RATIOS** - Ratios tell you how that individual did in relation to his contemporaries. 100 is average. Most breeders don't list ratios. We list them because we want you to know exactly what you are buying.

**COW PRODUCTION RATIOS** - Most breeders don't list this data, either. What good is data unless you share it? Dam production shows you how many calves that cow has had and how they compare to the rest of the herd at either birth or weaning (BR vs WR).



**LOT 25 S R EASY STREET 477**

BD: 3/9/2024 Reg #: 21153431

S A V Ease 0840	Marcy's Scale Crusher	<b>Dam's Prod.</b> 2/109
<b>S A V Easy Street 2289</b>	S A V Blackcap May 1416	
S A V Emblynette 9801	#S A V President 6847	<b>Calving Interval</b> 367
	S A V Emblynette 0084	
O C C Wholesome 667W	O C C Practical 841P	<b>Udder</b> 9.5
<b>S R Lady Blue 182</b>	O C C Juanada 664R	
S R Lady Blue 855	#Sitz 4 Aces 4551	<b>Docility</b> 8
	S R Lady Blue 118	

BW	Adj. 205	WWR	CE	BW	WW	YW	Milk
78	749	109	10	-0.6	64	105	24

Recommended for use on heifers.

**LOT 26 S R EASY STREET 476**

BD: 3/9/2024 Reg #: 21153424

S A V Ease 0840	Marcy's Scale Crusher	<b>Dam's Prod.</b> 2/107
<b>S A V Easy Street 2289</b>	S A V Blackcap May 1416	
S A V Emblynette 9801	#S A V President 6847	<b>Calving Interval</b> 368
	S A V Emblynette 0084	
O C C Wholesome 667W	O C C Practical 841P	<b>Udder</b> 9.5
<b>S R Lady Blue 198</b>	O C C Juanada 664R	
S R Lady Blue 831	#Sitz 4 Aces 4551	<b>Docility</b> 8
	S R Lady Blue 118	

BW	Adj. 205	WWR	CE	BW	WW	YW	Milk
78	711	103	10	-0.8	59	99	23

Recommended for use on heifers.

**LOT 27 S R EASY STREET 4701**

BD: 3/20/2024 Reg #: 21164950

S A V Ease 0840	Marcy's Scale Crusher	<b>Dam's Prod.</b> 1/104
<b>S A V Easy Street 2289</b>	S A V Blackcap May 1416	
S A V Emblynette 9801	#S A V President 6847	<b>Calving Interval</b> 1st calf
	S A V Emblynette 0084	
O C C Wholesome 667W	O C C Practical 841P	<b>Udder</b>
<b>Reich Pride K209</b>	O C C Juanada 664R	
Reich Pride 968	#S A V 004 Density 4336	<b>Docility</b>
	Reich Pride 515	

BW	Adj. 205	WWR	CE	BW	WW	YW	Milk
70	702	104	13	-1.3	54	90	22

Recommended for use on heifers.


**LOT 28 S R EASY STREET 437**

BD: 3/5/2024 Reg #: 21153434

S A V Ease 0840	Marcy's Scale Crusher	<b>Dam's Prod.</b> 2/108
<b>S A V Easy Street 2289</b>	S A V Blackcap May 1416	
S A V Emblynette 9801	#S A V President 6847	<b>Calving Interval</b> 368
	S A V Emblynette 0084	
O C C Honesty 962H	#O C C Anchor 771A	<b>Udder</b> 9
<b>S R Beauty 113</b>	O C C Dixie Erica 907C	
S R Beauty 827	#Sinclair Emulation XXP	<b>Docility</b> 9
	S R Beauty 430	

BW	Adj. 205	WWR	CE	BW	WW	YW	Milk
76	726	106	8	0.1	63	108	22

Recommended for use on heifers.



*"You've got to have some* **STOCKMAN SKILLS.**"

**"IF ALL YOU'RE GOING TO DO IS CHASE NUMBERS,** you're going to get in trouble real quick out here in these more arid environments. These cattle have to fit the environment. It takes too much money to get them into production and when we do get them into production, they need to stay in the herd for these ranchers. That means they've got to be fertile and good footed and everything that keeps a cow in production - good udders, teats."

"The numbers aren't going to tell you if the cattle are going to fit in your environment. People like numbers because they are simple, whether its EPDs or genomics or whatever. When it doesn't fit, it's not the numbers' problem. It's the way you used the tool. You've got to know how the cattle and the phenotypes fit your environment. I can't say that enough. Everybody wants things quick and simple. It doesn't work that way. . . THEY WANT THE NUMBER TO SOLVE THEIR PROBLEMS AND IT DOESN'T WORK THAT WAY. You've got to have some stockman skills." - **LEO MCDONNELL**





LT Firesteel 1123 • Sire of Lots 29-31



Basin Rainmaker 4404 • Maternal Grand sire of Lots 29-30

**LOT 29 S R FIRESTEEL 414**

BD: 3/2/2024 Reg #: 21153064

#KG Justified 3023 <b>LT Firesteel 1123</b> LT Erica 8120	Connealy Judgment KG Miss Magic 1443 #Connealy Confidence Plus LT Erica 0121 Basin Rainmaker 2704 Basin Joy 1036 #Connealy Thunder S R Betty 3207	<b>Dam's Prod.</b> 1/113 <b>Calving Interval</b> 1st calf <b>Udder</b> 10 <b>Docility</b> 10
-----------------------------------------------------------------	------------------------------------------------------------------------------------------------------------------------------------------------------------------------	-------------------------------------------------------------------------------------------------------

BW	Adj. 205	WWR	CE	BW	WW	YW	Milk
71	738	113	7	-0.1	65	113	32

Recommended for use on heifers.

**LOT 30 S R FIRESTEEL 464**

BD: 3/8/2024 Reg #: 21153065

#KG Justified 3023 <b>LT Firesteel 1123</b> LT Erica 8120	Connealy Judgment KG Miss Magic 1443 #Connealy Confidence Plus LT Erica 0121 Basin Rainmaker 2704 Basin Joy 1036 #Tehama Blackcap Revolution S R Clova Pride 202	<b>Dam's Prod.</b> 1/103 <b>Calving Interval</b> 1st calf <b>Udder</b> 8 <b>Docility</b> 9
-----------------------------------------------------------------	---------------------------------------------------------------------------------------------------------------------------------------------------------------------------------------	-----------------------------------------------------------------------------------------------------

BW	Adj. 205	WWR	CE	BW	WW	YW	Milk
70	672	103	6	0.6	65	112	30

Recommended for use on heifers.

**LOT 31 S R FIRESTEEL 417**

BD: 3/2/2024 Reg #: 21152934

#KG Justified 3023 <b>LT Firesteel 1123</b> LT Erica 8120	Connealy Judgment KG Miss Magic 1443 #Connealy Confidence Plus LT Erica 0121 #Mohnen Substantial 272 SITZ Pride 200B #S A V Raindance 6848 S R Polly 681	<b>Dam's Prod.</b> 1/107 <b>Calving Interval</b> 1st calf <b>Udder</b> 9 <b>Docility</b> 9
-----------------------------------------------------------------	-------------------------------------------------------------------------------------------------------------------------------------------------------------------------------	-----------------------------------------------------------------------------------------------------

BW	Adj. 205	WWR	CE	BW	WW	YW	Milk
72	698	107	5	0.4	72	128	27

Recommended for use on heifers.



S R Silverado 083 • Maternal Brother to Lot 32

**LOT 32 S R GLORY DAYS 4502**

BD: 3/4/2024 Reg #: 21149258

S A V America 8018 <b>S A V Glory Days 1832</b> #S A V Madame Pride 3145	#S A V President 6847 S A V Madame Pride 0075 #S A V Priority 7283 S A V Madame Pride 1171 #S A V Final Answer 0035 Prides Pita of Conanga 8821 Ox Bow Revival 1313 S R Dorothy Ideal 250	<b>Dam's Prod.</b> 7/106 <b>Calving Interval</b> 369 <b>Udder</b> 7 <b>Docility</b> 10
--------------------------------------------------------------------------------	----------------------------------------------------------------------------------------------------------------------------------------------------------------------------------------------------------------	-------------------------------------------------------------------------------------------------

BW	Adj. 205	WWR	CE	BW	WW	YW	Milk
90	643	ET	7	2.4	70	126	23



S R Dorothy Ideal 239 • Maternal Sister to Lot 32





LOT 33 • S R GLORY DAYS 4106

**LOT 33 S R GLORY DAYS 4106**

BD: 3/12/2024

Reg #: 21153342

S A V America 8018  
**S A V Glory Days 1832**  
 #S A V Madame Pride 3145  
 #S A V Resource 1441  
**S R Dorothy Ideal 6112**  
 S R Dorothy 968

#S A V President 6847  
 S A V Madame Pride 0075  
 #S A V Priority 7283  
 S A V Madame Pride 1171  
 Rito 707 of Ideal 3407 7075  
 S A V Blackcap May 4136  
 #O C C Great Plains 943G  
 Ideal 4637 of 452 285

Dam's Prod.	6/106
Calving Interval	370
Udder	9
Docility	9

BW	Adj. 205	WWR	CE	BW	WW	YW	Milk
89	722	ET	2	3.6	72	131	22

**LOT 34 S R GLORY DAYS 4514**

BD: 3/8/2024

Reg #: 21149280

S A V America 8018  
**S A V Glory Days 1832**  
 #S A V Madame Pride 3145  
 #Sitz Alliance 6595  
**S R Polly 804**  
 #SR Polly 323

#S A V President 6847  
 S A V Madame Pride 0075  
 #S A V Priority 7283  
 S A V Madame Pride 1171  
 #Sitz Traveler 8180  
 #Sitz Barabamere Jet 2698  
 #O C C Emblazon 854E  
 #M H Polly 817

Dam's Prod.	6/113
Calving Interval	352
Udder	10
Docility	10

BW	Adj. 205	WWR	CE	BW	WW	YW	Milk
95	688	ET	2	3.4	67	118	27



S R Dorothy Ideal 6112 • Dam of Lot 33



S R Polly 804 • Dam of Lot 34





**LOT 35 • S R ROBUST 4126**

**ET FLUSH BROTHERS**

---

**LOT 35**     **S R ROBUST 4126**  
 BD: 3/15/2024     Reg #: 21153386

BW	Adj. 205	WWR	CE	BW	WW	YW	Milk
87	660	ET	4	2.1	63	106	16

---

**LOT 36**     **S R ROBUST 445**  
 BD: 3/6/2024     Reg #: 21153379

BC Surveyor 680D <b>BC Robust 0807</b> BC 327-8 CP Belle 0-807	#BC Eagle Eye 110-7 BC 2266 Prides Lass 4132 680 BC Pure Pride 327-8 BC 607 CP Belle MF 807 Rito 707 of Ideal 3407 7075 S A V Blackcap May 4136 #O C C Great Plains 943G Ideal 4637 of 452 285	<b>Dam's Prod.</b> 6/106 <b>Calving Interval</b> 370 <b>Udder</b> 9 <b>Docility</b> 9
----------------------------------------------------------------------	---------------------------------------------------------------------------------------------------------------------------------------------------------------------------------------------------------------------	------------------------------------------------------------------------------------------------

---

BW	Adj. 205	WWR	CE	BW	WW	YW	Milk
77	677	ET	4	2.1	63	106	16



**LOT 36 • S R ROBUST 445**

*Cassidy is a Junior at South Dakota State University, majoring in Ag Communications with minors in Animal Science and Advertising. In addition to that, she works part-time for Strommen Livestock Services designing catalogs, logos and magazines, but will be putting that work on hold for the summer when she begins a media internship for the American Angus Association!*



*S R Dorothy Ideal 6112 • Dam of Lots 35-36*





**LOT 37 • S R ROBUST 4542**



**LOT 38 • S R ROBUST 4104**



*BC Robust 0807 • Sire of Lots 35-40*



*S A V Resource 1441 • Maternal Grand sire of Lots 35-40*

ET FLUSH BROTHERS

**LOT 37**

**S R ROBUST 4542**

BD: 3/16/2024 Reg #: 21149272

BW	Adj. 205	WWR	CE	BW	WW	YW	Milk
88	600	ET	4	2.1	63	106	16

**LOT 38**

**S R ROBUST 4104**

BD: 3/12/2024 Reg #: 21166437

BW	Adj. 205	WWR	CE	BW	WW	YW	Milk
80	721	ET	4	2.1	63	106	16

**LOT 39**

**S R ROBUST 4128**

BD: 3/16/2024 Reg #: 21153392

BW	Adj. 205	WWR	CE	BW	WW	YW	Milk
100	705	ET	4	2.1	63	106	16

**LOT 40**

**S R ROBUST 4535**

BD: 3/12/2024 Reg #: 21149266

BC Surveyor 680D  
**BC Robust 0807**  
 BC 327-8 CP Belle 0-807

#S A V Resource 1441  
**S R Dorothy Ideal 6112**  
 S R Dorothy 968

#BC Eagle Eye 110-7  
 BC 2266 Prides Lass 4132 680  
 BC Pure Pride 327-8  
 BC 607 CP Belle MF 807  
 Rito 707 of Ideal 3407 7075  
 S A V Blackcap May 4136  
 #O C C Great Plains 943G  
 Ideal 4637 of 452 285

Dam's Prod.	6/106
Calving Interval	370
Udder	9
Docility	9

BW	Adj. 205	WWR	CE	BW	WW	YW	Milk
88	628	ET	4	2.1	63	106	16



*Guests from Argentina touring Strommen Ranch headquarters this summer.*





LOT 41 • S R ROBUST 4545

ET FLUSH BROTHERS

LOT 41

S R ROBUST 4545

BD: 3/17/2024 Reg #: 21149260

BW	Adj. 205	WWR	CE	BW	WW	YW	Milk
88	634	ET	6	0.9	58	87	14

LOT 42

S R ROBUST 4507

BD: 3/6/2024 Reg #: 21149271

BW	Adj. 205	WWR	CE	BW	WW	YW	Milk
77	618	ET	6	0.9	58	87	14

LOT 43

S R ROBUST 4117

BD: 3/14/2024 Reg #: 21153473

BC Surveyor 680D  
**BC Robust 0807**  
 BC 327-8 CP Belle 0-807

#BC Eagle Eye 110-7  
 BC 2266 Prides Lass 4132 680  
 BC Pure Pride 327-8  
 BC 607 CP Belle MF 807  
 O C C Focus 813F  
 O C C Blackbird 736K  
 #B C C Bushwacker 41-93  
 M H Clova Pride 834

Dam's Prod.	9/104
Calving Interval	366
Udder	7.5
Docility	10

#O C C Paxton 730P  
**#S R Clova Pride 315**  
 S R Clova Pride 725

BW	Adj. 205	WWR	CE	BW	WW	YW	Milk
89	632	ET	6	0.9	58	87	14



LOT 42 • S R ROBUST 4507



S R Clova Pride 315 • Dam of Lots 41-43

What  
**MATERNAL  
 POWER®**  
 means to us:

Video#2: Scan this QR code with your smart phone's camera app to watch a different video about Strommen Ranch!







BC Robust 0807 • Sire of Lots 33-46



O C C Paxton 730P • Maternal Grandsire of Lots 41-46

ET FLUSH BROTHERS

LOT 44

**S R ROBUST 4506**

BD: 3/6/2024 Reg #: 21149270

BW	Adj. 205	WWR	CE	BW	WW	YW	Milk
88	678	ET	6	0.9	58	87	14

LOT 45

**S R ROBUST 4109**

BD: 3/13/2024 Reg #: 21153464

BW	Adj. 205	WWR	CE	BW	WW	YW	Milk
87	678	ET	6	0.9	58	87	14

LOT 46

**S R ROBUST 4113**

BD: 3/13/2024 Reg #: 21153470

BC Surveyor 680D  
**BC Robust 0807**  
 BC 327-8 CP Belle 0-807  
 #O C C Paxton 730P  
**#S R Clova Pride 315**  
 S R Clova Pride 725

#BC Eagle Eye 110-7  
 BC 2266 Prides Lass 4132 680  
 BC Pure Pride 327-8  
 BC 607 CP Belle MF 807  
 O C C Focus 813F  
 O C C Blackbird 736K  
 #B C C Bushwacker 41-93  
 M H Clova Pride 834

Dam's Prod.	9/104
Calving Interval	366
Udder	7.5
Docility	10

BW	Adj. 205	WWR	CE	BW	WW	YW	Milk
91	676	ET	6	0.9	58	87	14



LOT 44 • S R ROBUST 4506



S R Clova Pride 725 • Maternal Granddam of Lots 41-46



M H Clova Pride 834 • Maternal Great Granddam of Lots 41-46

“Good cattle don’t just happen – they’re built over generations. At Strommen Ranch, we’ve bred for maternal genetics since the beginning. **“Maternal”** is not a fad or a buzzword here. **It’s at the heart of everything we do.”**





S R Polly 7110 • Dam of Lot 47



S A V Providence 6922 • Paternal Grand sire of Lots 47-48



S R Travette 7158 • Dam of Lot 48

**LOT 47 S R REAL MCCOY 465**

BD: 3/8/2024

Reg #: 21153366

#S A V Providence 6922  
**Limestone Real Mc Coy W831**  
 B C Mignonne's Lola 4151

#S A V Resource 1441  
**S R Polly 7110**  
 S R Polly 804

#S A V 004 Predominant 4438  
 S A V May 7238  
 O C C Legend 616L  
 Gibbet Hill Mignonne E37  
 Rito 707 of Ideal 3407 7075  
 S A V Blackcap May 4136  
 #Sitz Alliance 6595  
 #SR Polly 323

Dam's Prod.	5/110
Calving Interval	365
Udder	10
Docility	10

BW	Adj. 205	WWR	CE	BW	WW	YW	Milk
87	805	ET	7	2.4	63	115	27

**LOT 48 S R REAL MCCOY 4140**

BD: 3/22/2024

Reg #: 21153331

#S A V Providence 6922  
**Limestone Real Mc Coy W831**  
 B C Mignonne's Lola 4151

#Sinclair Emulation XXP  
**#S R Travette 7158**  
 S R Travette 223

#S A V 004 Predominant 4438  
 S A V May 7238  
 O C C Legend 616L  
 Gibbet Hill Mignonne E37  
 #N Bar Emulation EXT  
 #N Bar Primrose Y3051  
 #O C C Paxton 730P  
 S R Travette 818

Dam's Prod.	6/104
Calving Interval	368
Udder	10
Docility	10

BW	Adj. 205	WWR	CE	BW	WW	YW	Milk
85	664	ET	6	2.2	57	101	23

**LOT 49 S R TORQUE 460**

BD: 3/7/2024

Reg #: 21153384

#S A V 004 Density 4336  
**#Bruin Torque 5261**  
 Falcon Blackbird 6071

S A V Landmark 9148  
**S R Bonnie Belle 128**  
 S R Bonnie Belle 798

#S A V 8180 Traveler 004  
 S A V May 7238  
 #Connealy Dateline  
 #Vermilion Blackbird 5044  
 S A V Territory 7225  
 S A V Blackcap May 1420  
 #Sinclair Emulation XXP  
 #S R Bonnie Belle 104

Dam's Prod.	2/102
Calving Interval	363
Udder	9
Docility	10

BW	Adj. 205	WWR	CE	BW	WW	YW	Milk
86	670	98	1	3.5	62	117	19

Thank you to Herdsman Kayla Weinzierl, who has now earned Strommen Ranch's employee-of-the-month award for 30 months consecutively!

Kayla has an exemplary work ethic and cares for our livestock as her own. She has a good mind for cattle and is always willing to pitch-in wherever she's needed, whether that's the working pens, the AI corrals, baking her signature "sticky wings" or editing bull videos into the wee hours of the night.







S R Lucy 268 • Maternal Granddam of Lot 50



Lot 50 is being offered for sale by (L to R) Cooper, Clint and Cassidy

**LOT 50 S R SILVERADO 423**  
 BD: 3/3/2024 Reg #: 21153214

S A V Rainfall 6846	#Coleman Charlo 0256	Dam's Prod.	5/99
<b>S R Silverado 083</b>	S A V Blackcap May 4136	Calving Interval	362
#S R Dorothy Ideal 604	#Connealy Capitalist 028	Udder	9
	S R Dorothy Ideal 471	Docility	9
#Bruin Torque 5261	#S A V 004 Density 4336		
<b>#S R Lucy 843</b>	Falcon Blackbird 6071		
S R Lucy 268	#GDAR Game Day 449		
	S R Lucy 963		

BW	Adj. 205	WWR	CE	BW	WW	YW	Milk
82	692	101	8	1.3	58	115	25



S R Silverado 083 • Sire of Lots 50-53

**LOT 51 S R SILVERADO 422**  
 BD: 3/3/2024 Reg #: 21153203

S A V Rainfall 6846	#Coleman Charlo 0256	Dam's Prod.	2/101
<b>S R Silverado 083</b>	S A V Blackcap May 4136	Calving Interval	360
#S R Dorothy Ideal 604	#Connealy Capitalist 028	Udder	9.5
	S R Dorothy Ideal 471	Docility	10
#Bruin Torque 5261	#S A V 004 Density 4336		
<b>S R Miss Wix 052</b>	Falcon Blackbird 6071		
S R Miss Wix 728	#Soo Line Motive 9016		
	#S R Miss Wix 591		

BW	Adj. 205	WWR	CE	BW	WW	YW	Milk
96	668	97	3	3.2	66	125	23

**LOT 52 S R SILVERADO 420**  
 BD: 3/3/2024 Reg #: 21153218

S A V Rainfall 6846	#Coleman Charlo 0256	Dam's Prod.	8/100
<b>S R Silverado 083</b>	S A V Blackcap May 4136	Calving Interval	364
#S R Dorothy Ideal 604	#Connealy Capitalist 028	Udder	7
	S R Dorothy Ideal 471	Docility	9
#Connealy Thunder	#Baldrige Kaboom K243 KCF		
<b>S R Betty 578</b>	#Parka of Conanga 241		
S R Betty 3207	#O C C Emblazon 854E		
	M H Betty 916		

BW	Adj. 205	WWR	CE	BW	WW	YW	Milk
79	672	98	9	0.7	51	94	26

We place **extensive pressure** on our cow herd and ourselves as breeders to generate the **RIGHT GENETICS** that will positively impact our customer's herds.



**LOT 53 S R SILVERADO 4151**  
 BD: 3/25/2024 Reg #: 21153215

S A V Rainfall 6846	#Coleman Charlo 0256	Dam's Prod.	4/103
<b>S R Silverado 083</b>	S A V Blackcap May 4136	Calving Interval	369
#S R Dorothy Ideal 604	#Connealy Capitalist 028	Udder	8.5
	S R Dorothy Ideal 471	Docility	9
#Soo Line Motive 9016	HF Kodiak 5R		
<b>S R Beauty 766</b>	TLA Beauty 5R		
S R Beauty 560	#S A V Resource 1441		
	S R Beauty 706		

BW	Adj. 205	WWR	CE	BW	WW	YW	Milk
92	698	102	0	3.6	64	120	21





LOT 54 • S R EASY STREET 487

**LOT 54** **S R EASY STREET 487**  
 BD: 3/10/2024 Reg #: 21153401

S A V Ease 0840	Marcys Scale Crusher	<b>Dam's Prod.</b> 1/107
<b>S A V Easy Street 2289</b>	S A V Blackcap May 1416	
S A V Emblynette 9801	#S A V President 6847	<b>Calving Interval</b> 1st calf
S R Silverado 083	S A V Emblynette 0084	
<b>S R Lady Barbara 250</b>	S A V Rainfall 6846	<b>Udder</b> 8.5
S R Lady Barbara 049	#S R Dorothy Ideal 604	<b>Docility</b> 9
	#Sitz Alliance 6595	
	MH Lady Barbara 2101	

BW	Adj. 205	WWR	CE	BW	WW	YW	Milk
73	700	107	10	-0.2	63	111	24

Recommended for use on heifers.

**LOT 55** **S R EASY STREET 479**  
 BD: 3/9/2024 Reg #: 21153412

S A V Ease 0840	Marcys Scale Crusher	<b>Dam's Prod.</b> 1/100
<b>S A V Easy Street 2289</b>	S A V Blackcap May 1416	
S A V Emblynette 9801	#S A V President 6847	<b>Calving Interval</b> 1st calf
S R Silverado 083	S A V Emblynette 0084	
<b>S R Lucy 212</b>	S A V Rainfall 6846	<b>Udder</b> 9
S R Lucy 059	#S R Dorothy Ideal 604	<b>Docility</b> 8
	#Bruin Torque 5261	
	S R Lucy 7165	

BW	Adj. 205	WWR	CE	BW	WW	YW	Milk
72	658	100	7	-0.3	63	114	21

Recommended for use on heifers.

**LOT 56** **S R EASY STREET 435**  
 BD: 3/5/2024 Reg #: 21153415

S A V Ease 0840	Marcys Scale Crusher	<b>Dam's Prod.</b> 1/112
<b>S A V Easy Street 2289</b>	S A V Blackcap May 1416	
S A V Emblynette 9801	#S A V President 6847	<b>Calving Interval</b> 1st calf
S R Silverado 083	S A V Emblynette 0084	
<b>S R Beauty 207</b>	S A V Rainfall 6846	<b>Udder</b> 8
S R Beauty 0111	#S R Dorothy Ideal 604	<b>Docility</b> 10
	#Bruin Torque 5261	
	S R Beauty 799	

BW	Adj. 205	WWR	CE	BW	WW	YW	Milk
84	733	112	5	2.5	75	134	24

Recommended for use on heifers.

**LOT 57** **S R EASY STREET 480**  
 BD: 3/9/2024 Reg #: 21153011

S A V Ease 0840	Marcys Scale Crusher	<b>Dam's Prod.</b> 1/110
<b>S A V Easy Street 2289</b>	S A V Blackcap May 1416	
S A V Emblynette 9801	#S A V President 6847	<b>Calving Interval</b> 1st calf
#Basin Rainmaker 4404	S A V Emblynette 0084	
<b>S R Pride 2106</b>	Basin Rainmaker 2704	<b>Udder</b> 8.5
S R Pride 0131	Basin Joy 1036	<b>Docility</b> 9
	#H A Power Alliance 1025	
	Sitz Pride 2188	

BW	Adj. 205	WWR	CE	BW	WW	YW	Milk
67	723	110	10	-0.2	64	111	26

Recommended for use on heifers.

*"As input costs continue to rise, profitability in the beef business will be driven by cowherds that have the genetics to do more with less."*





Sitz Stellar 726D • Maternal Grand sire of Lots 58-62



S A V Easy Street 2289 • Sire of Lots 58-62

**LOT 58 S R EASY STREET 4702**

BD: 3/22/2024 Reg #: 21164951

S A V Ease 0840  
**S A V Easy Street 2289**  
 S A V Emblynette 9801  
 #Sitz Stellar 726D  
**M Reich Primrose K2507**  
 Reich Primrose H527

Marcys Scale Crusher  
 S A V Blackcap May 1416  
 #S A V President 6847  
 S A V Emblynette 0084  
 #Mohnen Substantial 272  
 SITZ Pride 200B  
 Reich Statistics F516  
 Reich Primrose F128

Dam's Prod.	1/115
Calving Interval	1st calf
Udder	
Docility	

BW	Adj. 205	WWR	CE	BW	WW	YW	Milk
74	776	115	11	-0.1	69	109	22

Recommended for use on heifers.

**LOT 59 S R EASY STREET 4705**

BD: 3/23/2024 Reg #: 21164954

S A V Ease 0840  
**S A V Easy Street 2289**  
 S A V Emblynette 9801  
 #Sitz Stellar 726D  
**Reich Karma K2509**  
 Reich Karma H533

Marcys Scale Crusher  
 S A V Blackcap May 1416  
 #S A V President 6847  
 S A V Emblynette 0084  
 #Mohnen Substantial 272  
 SITZ Pride 200B  
 Reich Statistics F516  
 Reich Karma F335

Dam's Prod.	1/102
Calving Interval	1st calf
Udder	
Docility	

BW	Adj. 205	WWR	CE	BW	WW	YW	Milk
76	687	102	10	0.6	63	103	23

Recommended for use on heifers.

**LOT 60 S R EASY STREET 4706**

BD: 3/23/2024 Reg #: 21164955

S A V Ease 0840  
**S A V Easy Street 2289**  
 S A V Emblynette 9801  
 #Sitz Stellar 726D  
**Reich Heroine K2521**  
 Reich Heroine H140

Marcys Scale Crusher  
 S A V Blackcap May 1416  
 #S A V President 6847  
 S A V Emblynette 0084  
 #Mohnen Substantial 272  
 SITZ Pride 200B  
 #Bruin Torque 5261  
 Reich Heroine 5133

Dam's Prod.	1/105
Calving Interval	1st calf
Udder	
Docility	

BW	Adj. 205	WWR	CE	BW	WW	YW	Milk
72	705	105	12	-1.2	67	116	20

Recommended for use on heifers.

**LOT 61 S R EASY STREET 457**

BD: 3/7/2024 Reg #: 21152963

S A V Ease 0840  
**S A V Easy Street 2289**  
 S A V Emblynette 9801  
 #Sitz Stellar 726D  
**S R Lady Blue 213**  
 S R Lady Blue 8152

Marcys Scale Crusher  
 S A V Blackcap May 1416  
 #S A V President 6847  
 S A V Emblynette 0084  
 #Mohnen Substantial 272  
 SITZ Pride 200B  
 #S A V Regard 4863  
 S R Lady Blue 118

Dam's Prod.	1/108
Calving Interval	1st calf
Udder	9
Docility	9

BW	Adj. 205	WWR	CE	BW	WW	YW	Milk
60	705	108	13	-2.4	70	117	21

Recommended for use on heifers.

**LOT 62 S R EASY STREET 406**

BD: 2/29/2024 Reg #: 21152919

S A V Ease 0840  
**S A V Easy Street 2289**  
 S A V Emblynette 9801  
 #Sitz Stellar 726D  
**S R Dorothy Ideal 239**  
 #S R Dorothy Ideal 604

Marcys Scale Crusher  
 S A V Blackcap May 1416  
 #S A V President 6847  
 S A V Emblynette 0084  
 #Mohnen Substantial 272  
 SITZ Pride 200B  
 #Connealy Capitalist 028  
 S R Dorothy Ideal 471

Dam's Prod.	1/96
Calving Interval	1st calf
Udder	10
Docility	10

BW	Adj. 205	WWR	CE	BW	WW	YW	Milk
55	632	96	15	-3.2	62	108	21

Recommended for use on heifers.



*"The work of breeding animals is a work for a long-time, requiring **pluck**, **patience**, a high degree of **intelligence** and a **close practical judgement**."*

-WD Hoard, 1885



THESE BULLS AND FEMALES ARE THE **BACKBONE OF OUR COWHERD!**



TORQUE



EMBLAZON 702



RAINFALL



RESOURCE



CAPITALIST



XXP



EMBLAZON 854E



PAXTON



BLACKCAP REVOLUTION



RIGHT TIME



EXT



THUNDER



BC ROBUST



RAINMAKER 4404



GLORY DAYS

IT'S NOT HARD TO  
**MAKE DECISIONS**  
WHEN YOU KNOW WHAT  
YOUR *values* ARE.

WE VALUE **OUR CUSTOMERS.** We know that our success is wholly dependent on your success. This is why we are committed to raising the type of Angus seedstock that will have a lasting, positive impact on your bottom line, and why we will continue to build a market for Maternal POWER® females.

WE VALUE **INTEGRITY IN BUSINESS.** It is why we offer such a thorough bull guarantee. It's simple. We want you to have a bull that does his job and lasts for years. Our guarantee tells you we still have 'skin in the game,' after the sale and that we stand behind our bulls. We feel blessed that our customers also embody this same level of integrity and do their best to protect their investment in their Strommen Ranch bulls.



REPRESENTING OVER **20 YEARS** OF BREEDING FOR **MATERNAL GENETICS**



S R LADY BLUE 118



S R CLOVA PRIDE 315



S R LADY BLUE 585



S R BARBARAMERE NELL 412



S R EMMA E 695



S R RACHEL 703



S R RACHEL 8110



S R DOROTHY IDEAL 6112



S R TRAVETT 666



S R POLLY 804



S R MISS WIX 499



S R BONNIE BELLE 408



S R POLLY 7110



S R TRAVETTE 7158

WE VALUE **QUALITY**. Bulls that make our February and December sales are the top-cut of the calf crop and have been retained specifically for these sales.

Strommen Ranch calves grow out on grass. We DO NOT creep feed. We choose to run our seedstock operation like a no-nonsense commercial operation. We want your calves to perform in your environment – that’s why we ask our bulls and females to shine in a similar one. Our cows consistently improve weaning weights, while increasing the percentage of cows that re-breed in the first 21 days, maintaining mature cow size and placing downward pressure on our input costs. We are continually asking our cattle to do more with less.

WE VALUE **MATERNAL POWER**<sup>®</sup>. Strommen Ranch cows must calve annually and wean a calf that is a high percentage of its dam’s bodyweight. They must also possess the basic phenotypic traits to cover country, breed on time, have the smarts and mothering ability to do it on their own, all the while performing under the conditions that Mother Nature has dealt us. We select for fertility, longevity, sound structure and realistic performance in the cowherd.

**Cattle that breed early in the cycle, are structurally sound and can raise big calves efficiently in a practical environment with minimal inputs are the kind of cattle we produce and believe will have a positive impact on your bottomline now and into the future.**





SAV Priority 7283 • Sire of Lots 63-64



Connealy Reflection • Sire of Lots 65-66

LOT 63

### S R PRIORITY 4713

BD: 3/26/2024

Reg #: 21166310

#S A V Final Answer 0035	#Sitz Traveler 8180	Dam's Prod.	7/102
#S A V Priority 7283	S A V Emulous 8145	Calving Interval	369
#S A V Blackcap May 5530	#B C C Bushwacker 41-93	Udder	
	S A V May 7238	Docility	
BC Pure Pride 327d	#B C Lookout 7024		
Reich Enchantress 5295	#B C Pure Pride 110 825J 327		
Reich Enchantress 055	Reich Matrix 8113		
	Reich Enchantress 831		

BW	Adj. 205	WWR	CE	BW	WW	YW	Milk
76	709	105	5	1.4	58	93	21

LOT 64

### S R PRIORITY 4712

BD: 3/26/2024

Reg #: 21164959

#S A V Final Answer 0035	#Sitz Traveler 8180	Dam's Prod.	8/104
#S A V Priority 7283	S A V Emulous 8145	Calving Interval	369
#S A V Blackcap May 5530	#B C C Bushwacker 41-93	Udder	
	S A V May 72381	Docility	
#Basin Payweight 1682	#Basin Payweight 006S		
#Reich Enchantress 508	21AR O Lass 7017		
Reich Enchantress 3257	S R Paxton 128		
	Reich Enchantress 004		

BW	Adj. 205	WWR	CE	BW	WW	YW	Milk
72	678	101	8	-0.4	54	93	23

Recommended for use on heifers.

LOT 65

### S R REFLECTION 4715

BD: 3/28/2024

Reg #: 21166312

#Bon View New Design 878	#B/R New Design 036	Dam's Prod.	5/101
#Connealy Reflection	Bon View Gammer 85	Calving Interval	366
Happy Grill of Conanga 6260	#N Bar Emulation EXT	Udder	
	Happy Date of Conanga	Docility	
FairView Rito 7075 3084	Rito 707 of Ideal 3407 7075		
Reich Rita E122	Bohi Lady 1165		
Reich Erica Lady 337	#Connealy Thunder		
	Reich Erica Lady 1144		

BW	Adj. 205	WWR	CE	BW	WW	YW	Milk
80	637	95	11	-0.3	45	83	22

Recommended for use on heifers.

LOT 66

### S R REFLECTION 4721

BD: 4/4/2024

Reg #: 21166317

#Bon View New Design 878	#B/R New Design 036	Dam's Prod.	7/99
#Connealy Reflection	Bon View Gammer 85	Calving Interval	369
Happy Grill of Conanga 6260	#N Bar Emulation EXT	Udder	
	Happy Date of Conanga	Docility	
FairView Rito 7075 3084	Rito 707 of Ideal 3407 7075		
Reich Beauty D022	Bohi Lady 1165		
#Reich Beauty 419	#Connealy Thunder		
	Reich Beauty 2206		

BW	Adj. 205	WWR	CE	BW	WW	YW	Milk
80	678	101	11	-0.5	48	84	24

Recommended for use on heifers.



S R Barbaramere Nell 412 • Maternal Great Granddam of Lot 67

LOT 67

### S R GLORY DAYS 459

BD: 3/7/2024

Reg #: 21153179

S A V America 8018	#S A V President 6847	Dam's Prod.	2/101
S A V Glory Days 1832	S A V Madame Pride 0075	Calving Interval	363
#S A V Madame Pride 3145	#S A V Priority 7283	Udder	7.5
	S A V Madame Pride 1171	Docility	9
S A V Rainfall 6846	#Coleman Charlo 0256		
S R Barbaramere Nell 0156	S A V Blackcap May 4136		
S R Barbaramere Nell 6140	#Connealy Capitalist 028		
	S R Barbaramere Nell 412		

BW	Adj. 205	WWR	CE	BW	WW	YW	Milk
72	590	86	7	2	56	104	24

"We place extensive pressure on our cowherd and ourselves to generate the right genetics that will positively impact our customers' herds."





S A V Final Answer 0035 • Maternal Grand sire of Lot 68

**LOT 68 S R REVOLVER 4717**

BD: 3/29/2024 Reg #: 21166314

Rito 707 of Ideal 3407 7075	#R R Rito 707	Dam's Prod.	6/101
FairView Rito 7075 3084	Ideal 3407 of 1418 076	Calving Interval	369
Bohi Lady 1165	#N Bar Emulation EXT	Udder	
	Ideal 4465 of 6807 4286	Docility	
#S A V Final Answer 0035	#Sitz Traveler 8180		
Reich Lady D004	S A V Emulous 8145		
Reich Lady 456	Reich Bandwagon 906		
	Reich Lady 718		

BW	Adj. 205	WWR	CE	BW	WW	YW	Milk
74	717	106	10	-1.4	52	82	20

Recommended for use on heifers.

**LOT 69 S R REVOLVER 4716**

BD: 3/28/2024 Reg #: 21166313

Rito 707 of Ideal 3407 7075	#R R Rito 707	Dam's Prod.	5/107
FairView Rito 7075 3084	Ideal 3407 of 1418 076	Calving Interval	366
Bohi Lady 1165	#N Bar Emulation EXT	Udder	
	Ideal 4465 of 6807 4286	Docility	
Reich 8113 Matrix 4216	Reich Matrix 8113		
Reich Coquette E262	Reich Miss Wix 6123		
Reich Coquette 804	#Mytty In Focus		
	Reich Coquette 649		

BW	Adj. 205	WWR	CE	BW	WW	YW	Milk
70	741	110	8	-1.0	49	76	21

Recommended for use on heifers.

**LOT 70 S R REVOLVER 4719**

BD: 4/2/2024 Reg #: 21166315

Rito 707 of Ideal 3407 7075	#R R Rito 707	Dam's Prod.	7/107
FairView Rito 7075 3084	Ideal 3407 of 1418 076	Calving Interval	369
Bohi Lady 1165	#N Bar Emulation EXT	Udder	
	Ideal 4465 of 6807 4286	Docility	
#Connealy Mentor 7374	#G A R Retail Product		
Reich Lady D204	#Executa of Conanga 939		
Reich Lady 3222	BC Pure Pride 327d		
	Reich Lady 1226		

BW	Adj. 205	WWR	CE	BW	WW	YW	Milk
74	706	105	8	-0.6	53	93	21

Recommended for use on heifers.



**LOT 71 S R REVOLVER 4708**

BD: 3/25/2024 Reg #: 21166309

Rito 707 of Ideal 3407 7075	#R R Rito 707	Dam's Prod.	6/96
FairView Rito 7075 3084	Ideal 3407 of 1418 076	Calving Interval	367
Bohi Lady 1165	#N Bar Emulation EXT	Udder	
	Ideal 4465 of 6807 4286	Docility	
Reich BC Pure Pride 477	BC Pure Pride 755-1		
V Reich Annie D145	Reich Miss Wix 855		
#V Reich Annie 447	#Connealy Thunder		
	V Reich Annie 231		

BW	Adj. 205	WWR	CE	BW	WW	YW	Milk
76	654	97	11	-1.5	47	83	19

Recommended for use on heifers.

We are fortunate to have been selected by Certified Angus Beef® Brand to have its iconic logo hand-painted on our working barn. It is an honor reserved for a handful of Angus ranches across the nation and we couldn't be more excited to be a part of that special project.


To commemorate the painting, we hosted members of Clint's medical care team, as well as fellow Angus enthusiasts at the ranch in October. The evening included tours of the development center and Certified Angus Beef® from Dakota Angus, LLC, expertly grilled by representatives of Dakota Community Bank & Trust.



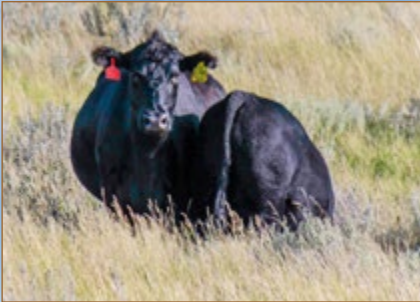


## **PROVEN, BALANCED COW-MAKERS**

Our cattle are backed by generations of proven, efficient genetics, emphasizing calving ease, fleshing ability, productivity, udder & foot quality, disposition, structure and fertility.







"IF YOU CAN'T PUT YOUR HEAD ON YOUR PILLOW AT NIGHT AND VISUALIZE YOUR IDEAL COW, THE ODDS OF YOU MAKING ONE ARE VERY, VERY SLIM."

"I AM ANGUS: ED OLIVER, GEORGIA"




## OUR CATTLE *Thrive* IN A GRASS-BASED, NO-FRILLS ENVIRONMENT

From the beginning, we've been laser-focused on producing Angus cattle that prosper in a no-frills environment: moderate-framed, high-volume, easy-fleshing, productive cows with good feet, great udders and a quiet disposition. We expect our cows to re-breed quickly and wean a calf that is a high percentage of its dam's bodyweight, year after year. Our cows have consistently increased weaning weights while increasing the percentage of cows that re-breed in the first 21 days. You won't find any creep feeders hidden behind the hills of our pastures. **Cattle that can do more with less – that's our definition of MATERNAL POWER®!**

From the beginning, we've also been very particular about the sires we select. **We hate surprises.** That's why we use a small group of proven, balanced-trait AI sires on our cows each year. We conduct a tremendous amount of research – evaluating the generations of genetics behind a bull, as well as his progeny – before we commit. A powerful, consistent cowherd cannot be

built using a "little-bit-of-this-little-bit-of-that" strategy to sire selection. You must have a plan and a clear vision of what your ideal cow is.

**We know what it is like to start from scratch** – and how important it is to make cattle work for you, instead of the other way around. As your seedstock provider, we want your operations to be profitable and sustainable for generations – regardless of the market. **We believe you can achieve this by developing your own herd of efficient, problem-free livestock backed by Strommen Ranch MATERNAL POWER® Angus genetics.**

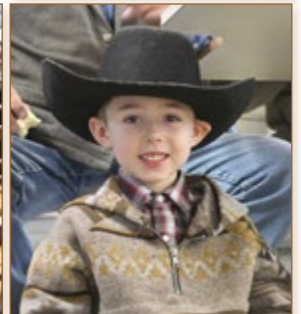
We invite you to attend our Maternal POWER® Angus Bull Sale, **Feb. 15, 2025**, starting at 3 p.m. at the ranch, Solen, N.D. Our bulls' pedigrees are stacked with six to eight generations of proven, balanced, female-making genetics and we stand behind them with an industry-leading guarantee, exceptional customer service, and a powerful, maternally oriented herd. 



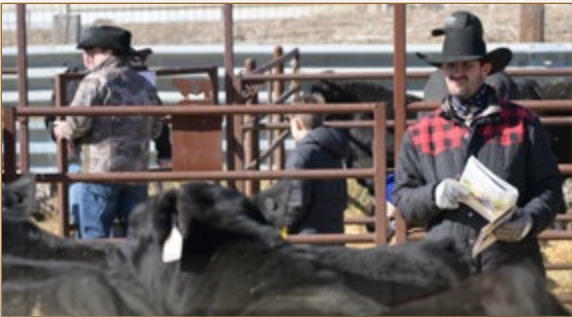


Customers and friends, you're at the **CENTER** of every decision we make.

*Thank you*  
FOR PLACING YOUR  
TRUST IN US!









## **ABOUT THE 2-YEAR-OLDS**

Beginning in 2016, we started retaining a portion of our bulls to be offered as two-year-olds, due to an increase of requests from customers. This year, our sale is offering 27 outstanding two-year-old bulls aimed to meet your satisfaction. They were developed as yearlings in a similar manner as the bulls that were sold in our previous Maternal POWER® sales.

These boys are stout, rugged, masculine and ready for heavy service in big country. We are excited to continue expanding this part of our operation, as it gives us the chance to see our genetics as they age and develop.







LOT 72 • S R ROBUST 390

LOT 72

## S R ROBUST 390

BD: 3/13/2023

Reg #: 20851389

BC Surveyor 680D  
**BC Robust 0807**  
 BC 327-8 CP Belle 0-807

#BC Eagle Eye 110-7  
 BC 2266 Prides Lass 4132 680  
 BC Pure Pride 327-8  
 BC 607 CP Belle MF 807  
 Rito 707 of Ideal 3407 7075  
 S A V Blackcap May 4136  
 #Sitz Alliance 6595  
 #SR Polly 323

Dam's Prod.	5/110
Calving Interval	365
Udder	10
Docility	10

#S A V Resource 1441  
**S R Polly 7110**  
 S R Polly 804

BW	Adj. 205	WWR	CE	BW	WW	YW	Milk
91	686	98	2	3.1	64	113	19



S R Polly 7110 • Dam of Lot 72



S R Torque 1125 • Maternal Brother to Lots 1 and 72



S R Polly 804 • Maternal Granddam of Lot 72





**LOT 73 • S R ROBUST 3121**



*S R Clova Pride 315  
Dam of Lots 73-75*



*S R Clova Pride 725  
Maternal Granddam of  
Lots 73-75*

— ET FLUSH BROTHERS —

**LOT 73** **S R ROBUST 3121**  
 BD: 3/16/2023 Reg #: 20851488

BW	Adj. 205	WWR	CE	BW	WW	YW	Milk
81	618	ET	6	0.9	58	87	14

**LOT 74** **S R ROBUST 3116**  
 BD: 3/15/2023 Reg #: 20851483

BW	Adj. 205	WWR	CE	BW	WW	YW	Milk
89	649	ET	6	0.9	58	87	14

**LOT 75** **S R ROBUST 3128**  
 BD: 3/17/2023 Reg #: 20851490

BW	Adj. 205	WWR	CE	BW	WW	YW	Milk
93	612	ET	6	0.9	58	87	14

#BC Eagle Eye 110-7  
 #BC Surveyor 680D  
 BC Robust 0807  
 BC 327-8 CP Belle 0-807  
 #O C C Paxton 730P  
 #S R Clova Pride 315  
 S R Clova Pride 725

#BC 2266 Prides Lass 4132 680  
 BC Pure Pride 327-8  
 BC 607 CP Belle MF 807  
 O C C Focus 813F  
 O C C Blackbird 736K  
 #B C C Bushwacker 41-93  
 M H Clova Pride 834

Dam's Prod.	9/104
Calving Interval	366
Udder	7.5
Docility	10



**LOT 74 • S R ROBUST 3116**



*Cooper shared his showing technique with Senator Keith Boehm of Mandan, who won the swine division of the ND Leaders Contest at the ND State Fair! Cooper is pleased to be working with an Angus heifer in 2025.*







LOT 76 • S R ROBUST 331

LOT 76

**S R ROBUST 331**

BD: 3/8/2023

Reg #: 20851474

BC Surveyor 680D  
**BC Robust 0807**  
 BC 327-8 CP Belle 0-807  
 #S A V Resource 1441  
**#S R Blackbird 533**  
 DR Blackbird 157

#BC Eagle Eye 110-7  
 BC 2266 Prides Lass 4132 680  
 BC Pure Pride 327-8  
 BC 607 CP Belle MF 807  
 Rito 707 of Ideal 3407 7075  
 S A V Blackcap May 4136  
 Sinclair Memento 8RL4  
 DR Blackbird 770

Dam's Prod.	8/101
Calving Interval	374
Udder	6.5
Docility	10

BW	Adj. 205	WWR	CE	BW	WW	YW	Milk
89	651	93	4	2	58	99	15



LOT 77 • S R ROBUST 3101

LOT 77

**S R ROBUST 3101**

BD: 3/14/2023

Reg #: 20851471

BC Surveyor 680D  
**BC Robust 0807**  
 BC 327-8 CP Belle 0-807  
 #S A V Resource 1441  
**S R Beauty 560**  
 S R Beauty 706

#BC Eagle Eye 110-7  
 BC 2266 Prides Lass 4132 680  
 BC Pure Pride 327-8  
 BC 607 CP Belle MF 807  
 Rito 707 of Ideal 3407 7075  
 S A V Blackcap May 4136  
 #Leachman Right Time  
 M H Beauty 807

Dam's Prod.	6/91
Calving Interval	365
Udder	8.5
Docility	9

BW	Adj. 205	WWR	CE	BW	WW	YW	Milk
88	633	91	4	1.9	55	93	12

"Time goes **slowly** very **quickly**.  
*Stay the course.*"

-Ian Vivers, Eaglehawk Angus



Thanks to Aunt Cheryl (above, far right), Clint delivered the game ball to the North Dakota State University Bison football team in November, with thunderous applause from BisonNation. Clint has been an avid fan of the Bison for 13 years!





**LOT 78 • S R LANDMARK 3522**



*S R Rachel 8110  
Dam of Lots 78-79*



*Reich Rachel 588  
Maternal Granddam of  
Lots 78-79*

**ET FLUSH BROTHERS**

---

**LOT 78**      **S R LANDMARK 3522**  
 BD: 3/20/2023      Reg #: 20843823

BW	Adj. 205	WWR	CE	BW	WW	YW	Milk
98	615	ET	-4	3.7	75	130	16

---

**LOT 79**      **S R LANDMARK 3501**  
 BD: 3/13/2023      Reg #: 20843830

BW	Adj. 205	WWR	CE	BW	WW	YW	Milk
87	658	ET	-4	3.7	75	130	16

S A V Territory 7225      #S A V Resource 1441  
**S A V Landmark 9148**      S A V Emblynette 3293  
 S A V Blackcap May 1420      Rito 707 of Ideal 3407 7075  
                                          S A V Blackcap May 4136  
 #Sinclair Emulation XXP      #N Bar Emulation EXT  
**#S R Rachel 8110**      #N Bar Primrose Y3051  
 Reich Rachel 588      #S A V Resource 1441  
                                          #Reich Eota Lass 798

<b>Dam's Prod.</b>	5/107
<b>Calving Interval</b>	364
<b>Udder</b>	10
<b>Docility</b>	10



**PICKING THE ROSTER. . .**

We spend a lot of time researching bulls before adding them to our program. The sires we select must be backed by a strong cow family with the maternal traits to produce excellent replacement females and bulls that will go out and cover country. We evaluate production records on the dams and granddams to ensure they are exemplary and that the bull's granddam has been in the herd for a long time.

If the bull's pedigree passes the production/longevity test, we then look at the bulls' conformation, foot quality, depth and length of body, muscularity, and ability to be easy-fleshing. Most of our breeding decisions are years in the making. When we select one sire we are already considering which bull we will use to breed the daughters. Our discipline in sire selection is a benefit to our customers as it allows us to offer larger sire groups with many half and 3/4 brothers, which in turn, improves uniformity in our customers' herds!



**LOT 79 • S R LANDMARK 3501**





LOT 80 • S R LANDMARK 3196

LOT 80

**S R LANDMARK 3196**

BD: 4/4/2023

Reg #: 20842700

S A V Territory 7225  
**S A V Landmark 9148**  
 S A V Blackcap May 1420

#S A V Resource 1441  
 S A V Emblynette 3293  
 Rito 707 of Ideal 3407 7075  
 S A V Blackcap May 4136  
 #S A V 004 Density 4336  
 Falcon Blackbird 6071  
 #O C C Paxton 730P  
 #S R Lady Blue 631

Dam's Prod.	4/95
Calving Interval	353
Udder	7
Docility	7

#Bruin Torque 5261  
**S R Lady Blue 923**  
 S R Lady Blue 118

BW	Adj. 205	WWR	CE	BW	WW	YW	Milk
99	723	104	-1	3.3	69	116	14



S R Lady Blue 118 • Maternal Granddam of Lot 80

LOT 81

**S R LANDMARK 3185**

BD: 4/2/2023

Reg #: 20974989

S A V Territory 7225  
**S A V Landmark 9148**  
 S A V Blackcap May 1420

#S A V Resource 1441  
 S A V Emblynette 3293  
 Rito 707 of Ideal 3407 7075  
 S A V Blackcap May 4136  
 #S A V 004 Density 4336  
 Falcon Blackbird 6071  
 #O C C Paxton 730P  
 #S R Lady Blue 631

Dam's Prod.	4/95
Calving Interval	370
Udder	10
Docility	7

#Bruin Torque 5261  
**S R Lady Blue 943**  
 S R Lady Blue 118

BW	Adj. 205	WWR	CE	BW	WW	YW	Milk
93	599	86	1	2.6	58	102	14

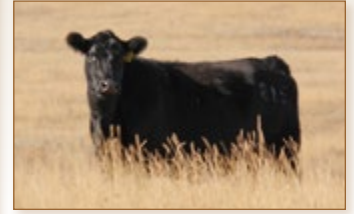


S R Lady Blue 943 • Dam of Lot 81





LOT 82 • S R LANDMARK 3168



S R Dorothy Ideal 815  
Dam of Lot 82



S R Dorothy Ideal 6112  
Maternal Granddam of Lot 82

LOT 82

**S R LANDMARK 3168**

BD: 3/27/2023

Reg #: 20842695

S A V Territory 7225  
**S A V Landmark 9148**  
S A V Blackcap May 1420

#S A V Resource 1441  
S A V Emblynette 3293  
Rito 707 of Ideal 3407 7075  
S A V Blackcap May 4136  
HF Kodiak 5R  
TLA Beauty 5R  
#S A V Resource 1441  
S R Dorothy 968

Dam's Prod.	5/98
Calving Interval	367
Udder	9
Docility	10

#Soo Line Motive 9016  
**S R Dorothy Ideal 815**  
S R Dorothy Ideal 6112

BW	Adj. 205	WWR	CE	BW	WW	YW	Milk
84	677	97	3	1.3	67	118	14

*Agriculture* is our **wisest pursuit**, because it will in the end contribute most to **real wealth, good morals, and happiness.**"

- Thomas Jefferson



*This summer, Clint was surprised by his good friend Hunter Barreth (far right) when he brought U.S. Navy S.E.A.L. Captain Nick to the ranch! The SEALs are an elite military force trained in all aspects of unconventional warfare by sea, air, and land. Captain Nick has protected the U.S. in ways regular cowboys like us can only imagine. We thank him and his peers for their service. Soldiers, cowboys and Angus beef. Pretty hard to top an afternoon like that!*

ET FLUSH BROTHERS

LOT 83

**S R LANDMARK 3510**

BD: 3/18/2023

Reg #: 20843835

BW	Adj. 205	WWR	CE	BW	WW	YW	Milk
91	681	ET	1	2.4	68	116	20

LOT 84

**S R LANDMARK 3532**

BD: 3/21/2023

Reg #: 20849736

S A V Territory 7225  
**S A V Landmark 9148**  
S A V Blackcap May 1420

#S A V Resource 1441  
S A V Emblynette 3293  
Rito 707 of Ideal 3407 7075  
S A V Blackcap May 4136  
#Sitz Alliance 6595  
#Sitz Traveler 8180  
#Sitz Barbamere Jet 2698  
#O C C Emblazon 854E  
#M H Polly 817

**S R Polly 804**  
#SR Polly 323

Dam's Prod.	6/113
Calving Interval	352
Udder	10
Docility	10

BW	Adj. 205	WWR	CE	BW	WW	YW	Milk
89	645	ET	1	2.4	68	116	20



S R Polly 804 • Dam of Lots 83-84





LOT 85 • S R ROBUST 3171

LOT 85

**S R ROBUST 3171**

BD: 3/29/2023

Reg #: 20851387

BC Surveyor 680D  
**BC Robust 0807**

BC 327-8 CP Belle 0-807

#Sinclair Emulation XXP

**S R Sara 877**

S R Sara 475

#BC Eagle Eye 110-7  
BC 2266 Prides Lass 4132 680  
BC Pure Pride 327-8  
BC 607 CP Belle MF 807  
#N Bar Emulation EXT  
#N Bar Primrose Y3051  
#S A V Resource 1441  
S R Sara 522

Dam's Prod.	4/103
Calving Interval	370
Udder	8
Docility	10

BW	Adj. 205	WWR	CE	BW	WW	YW	Milk
89	698	100	2	3.1	62	105	15



LOT 86 • S R ROBUST 3137

LOT 86

**S R ROBUST 3137**

BD: 3/18/2023

Reg #: 20851431

BC Surveyor 680D  
**BC Robust 0807**

BC 327-8 CP Belle 0-807

#S A V Resource 1441

**S R Polly 7110**

S R Polly 804

#BC Eagle Eye 110-7  
BC 2266 Prides Lass 4132 680  
BC Pure Pride 327-8  
BC 607 CP Belle MF 807  
Rito 707 of Ideal 3407 7075  
S A V Blackcap May 4136  
#Sitz Alliance 6595  
#SR Polly 323

Dam's Prod.	5/110
Calving Interval	365
Udder	10
Docility	10

BW	Adj. 205	WWR	CE	BW	WW	YW	Milk
99	657	ET	3	2.8	67	114	20



S R Polly 7110 • Dam of Lot 86



Strommen Ranch delivers! We truly enjoy visiting our customers at their ranches and seeing our genetics at work in their herds.





**LOT 87 • S R ROBUST 3508**

ET FLUSH BROTHERS

**LOT 87**

**S R ROBUST 3508**

BD: 3/16/2023 Reg #: 20851461

BW	Adj. 205	WWR	CE	BW	WW	YW	Milk
88	652	ET	4	2.1	63	106	16

**LOT 88**

**S R ROBUST 3507**

BD: 3/15/2023 Reg #: 20851460

BW	Adj. 205	WWR	CE	BW	WW	YW	Milk
89	614	ET	4	2.1	63	106	16

**LOT 89**

**S R DOROTHY IDEAL 3513**

BD: 3/18/2023 Reg #: 20851464

BC Surveyor 680D	#BC Eagle Eye 110-7	Dam's Prod.	6/106
<b>BC Robust 0807</b>	BC 2266 Prides Lass 4132 680		
BC 327-8 CP Belle 0-807	BC Pure Pride 327-8	Calving Interval	370
	BC 607 CP Belle MF 807		
#S A V Resource 1441	Rito 707 of Ideal 3407 7075	Udder	9
<b>S R Dorothy Ideal 6112</b>	S A V Blackcap May 4136	Docility	9
S R Dorothy 968	#O C C Great Plains 943G		
	Ideal 4637 of 452 285		

BW	Adj. 205	WWR	CE	BW	WW	YW	Milk
86	564	ET	4	2.1	63	106	16



**LOT 88 • S R ROBUST 3507**



*S R Dorothy Ideal 6112 • Dam of Lots 87-89*







LOT 90 • S R ROBUST 3132



S R Betty 3208 • Dam of Lots 90-92

— ET FLUSH BROTHERS —

**LOT 90** **S R ROBUST 3132**  
 BD: 3/17/2023 Reg #: 20851481

BW	Adj. 205	WWR	CE	BW	WW	YW	Milk
87	642	ET	1	2.7	53	83	19

**LOT 91** **S R ROBUST 3120**  
 BD: 3/16/2023 Reg #: 20851479

BC Surveyor 680D	#BC Eagle Eye 110-7	Dam's Prod.	9/103
<b>BC Robust 0807</b>	BC 2266 Prides Lass 4132 680		
BC 327-8 CP Belle 0-807	BC Pure Pride 327-8	Calving Interval	364
	BC 607 CP Belle MF 807	Udder	7
#O C C Great Plains 943G	#N Bar Emulation EXT	Docility	8
<b>S R Betty 3208</b>	Dixie Erica of C H 1019		
M H Betty 916	#Papa Durabull 9805		
	V D A R Betty 23		

BW	Adj. 205	WWR	CE	BW	WW	YW	Milk
83	662	ET	1	2.7	53	83	19



OCC Great Plains 943G • Maternal Grand sire of Lots 90-92

**LOT 92** **S R ROBUST 3125**  
 BD: 3/17/2023 Reg #: 20851475

BC Surveyor 680D	#BC Eagle Eye 110-7	Dam's Prod.	9/103
<b>BC Robust 0807</b>	BC 2266 Prides Lass 4132 680		
BC 327-8 CP Belle 0-807	BC Pure Pride 327-8	Calving Interval	364
	BC 607 CP Belle MF 807	Udder	7
#O C C Great Plains 943G	#N Bar Emulation EXT	Docility	8
<b>S R Betty 3208</b>	Dixie Erica of C H 1019		
M H Betty 916	#Papa Durabull 9805		
	V D A R Betty 23		

BW	Adj. 205	WWR	CE	BW	WW	YW	Milk
97	739	106	-2	4	59	94	19

**LOT 93** **S R HIGH FIVE 3211**  
 BD: 4/24/2023 Reg #: 627447013

#O C C Eureka 865E	#O C C Backstop 888B	Dam's Prod.	1/98
<b>O C C High Five 838H</b>	#Blackbird of R R 1204		
O C C Juanada 877Z	#O C C Jet Stream 825J	Calving Interval	1st calf
	O C C Juanada 826R	Udder	8
S A V Rainfall 6846	#Coleman Charlo 0256	Docility	7
<b>S R Clova Pride 179</b>	S A V Blackcap May 4136		
S R Clova Pride 823	#Soo Line Motive 9016		
	S R Clova Pride 6160		

BW	Adj. 205	WWR	CE	BW	WW	YW	Milk
77	677	98	7	0.5	42	74	23

EPDs for Lot 93 are parent average.







LOT 94 • S R COMMERCIAL 3899

LOT 94

**S R COMMERCIAL 3899**

BD: 4/25/2023

Reg #: 627447014

#Sitz 4 Aces 4551  
**S R Lady Blue 899**  
 S R Lady Blue 118

#Jauer 353 Traveler 589 27  
 Sitz Pride 2561  
 #O C C Paxton 730P  
 #S R Lady Blue 631

Dam's Prod.	2/106
Calving Interval	384
Udder	
Docility	

BW	Adj. 205	WWR	CE	BW	WW	YW	Milk
84	644	92					

LOT 95

**S R LANDMARK 346**

BD: 3/9/2023

Reg #: 20842681

S A V Territory 7225  
**S A V Landmark 9148**  
 S A V Blackcap May 1420

#S A V Resource 1441  
 S A V Emblynette 3293  
 Rito 707 of Ideal 3407 7075  
 S A V Blackcap May 4136  
 #S A V 004 Density 4336  
 Falcon Blackbird 6071  
 #GDAR Game Day 449  
 #Miss Wix 145 of Circle V

#Bruin Torque 5261  
**S R Miss Wix 0116**  
 #S R Miss Wix 3110

Dam's Prod.	3/98
Calving Interval	370
Udder	9.5
Docility	10

BW	Adj. 205	WWR	CE	BW	WW	YW	Milk
83	679	97	3	2.3	64	116	17

LOT 96

**S R LANDMARK 3186**

BD: 4/2/2023

Reg #: 20842697

S A V Territory 7225  
**S A V Landmark 9148**  
 S A V Blackcap May 1420

#S A V Resource 1441  
 S A V Emblynette 3293  
 Rito 707 of Ideal 3407 7075  
 S A V Blackcap May 4136  
 #N Bar Emulation EXT  
 Leachman Erica 0025  
 #D H D Traveler 6807  
 O C C Dixie Erica 907C

#Leachman Right Time  
**S R Dixie Erica 777**  
 K R Northern Erica 125

Dam's Prod.	4/101
Calving Interval	371
Udder	9.5
Docility	8

BW	Adj. 205	WWR	CE	BW	WW	YW	Milk
89	682	98	2	2.3	60	104	16

LOT 97

**S R GLORY DAYS 398**

BD: 3/14/2023

Reg #: 20843728

S A V America 8018  
**S A V Glory Days 1832**  
 #S A V Madame Pride 3145

#S A V President 6847  
 S A V Madame Pride 0075  
 #S A V Priority 7283  
 S A V Madame Pride 1171  
 #N Bar Emulation EXT  
 #N Bar Primrose Y3051  
 #Sitz Alliance 6595  
 #SR Polly 323

#Sinclair Emulation XXP  
**S R Polly 888**  
 S R Polly 804

Dam's Prod.	5/104
Calving Interval	350
Udder	9
Docility	8

BW	Adj. 205	WWR	CE	BW	WW	YW	Milk
108	736	106	-7	6.1	74	137	23

LOT 98

**S R TORQUE 3745**

BD: 3/29/2023

Reg #: 20854063

#S A V 004 Density 4336  
**#Bruin Torque 5261**  
 Falcon Blackbird 6071

#S A V 8180 Traveler 004  
 S A V May 7238  
 #Connealy Dateline  
 #Vermilion Blackbird 5044  
 #GDAR Game Day 449  
 DR Emma 1122  
 #Sitz Alliance 6595  
 BT MS Pride 24L

S R Game Day 359  
**Reich Pride D233**  
 Reich Pride 637

Dam's Prod.	5/104
Calving Interval	370
Udder	
Docility	

BW	Adj. 205	WWR	CE	BW	WW	YW	Milk
88	585	95	4	2.6	48	95	26

*This is* **MY MATERNAL**

LIMITED-EPIISODE VIDEO SERIES



We are thrilled to be a part of a diverse group of Angus breeders dedicated to building the backbone of America's successful and most profitable commercial cowherds. "This is My Maternal" is a limited-episode video series featuring a network of 8 unique families that prioritize the Angus female and the maternal traits that can't be measured by EPDs or indexes. There will be 17 videos available upon the completion of the project.

Enjoy them at [www.StrommenRanch.com](http://www.StrommenRanch.com) or follow us on Facebook to be notified as each video is released.

Scan this QR code with your smart phone's camera app to watch the introductory video to the "THIS IS MY MATERNAL" Video Series on Facebook!





# MARKETING

*opportunities*

## THROUGH THE BADLANDS ANGUS ALLIANCE

If you have cattle heavily influenced by Talkington Angus, Strommen Ranch or Best Angus genetics and you'd like assistance in marketing them, please contact us!

We have the utmost confidence in the following representatives. They have extensive experience and will represent your cattle with honesty and integrity to help you capture the most value for your operation:

### SUPERIOR LIVESTOCK AUCTION VIDEO SALES

Lewistown Livestock Auction • Lewistown, MT  
Kyle Shobe .....406-366-0472

Stockmen's Livestock • Dickinson, ND  
John Fischer .....701-290-1606  
Austin Henderson.....701-471-2673  
Dan O'Donnell.....406-939-0526

### NORTHERN LIVESTOCK VIDEO SALES

Jarvis Sorenson .....701-570-6680

In addition to helping our customers capture added value for their bred heifers and replacement heifer calves, we are working to help you capture added value for your entire calf crop.

*Contact us about these marketing options:*

### BADLANDS ANGUS ALLIANCE

#### BULL & BRED HEIFER SALE

Dec. 3, 2025 • Stockmen's West, Dickinson  
Featuring commercial bred heifers that are out of and bred back to Talkington, Strommen or Best genetics.

### BADLANDS ANGUS ALLIANCE

#### REPLACEMENT HEIFER CALF SPECIAL

Feb. 6, 2025 • Stockmen's Livestock, Dickinson  
Featuring commercial replacement heifers that are heavily influenced by Talkington, Strommen or Best genetics. (These heifers directly qualify for our bred heifer sale when they are bred back to Talkington, Strommen or Best Angus genetics.)



**BEST ANGUS**  
PETE & VAWNITA BEST

Watford City, ND • (701) 570-6959 •   
[www.BestAngusAndQuarterHorses.com](http://www.BestAngusAndQuarterHorses.com)



**STROMMEN RANCH**  
AARON & SHEYNA STROMMEN

Solen, ND • (701) 290-7983  
 • [www.StrommenRanch.com](http://www.StrommenRanch.com)



**TALKINGTON ANGUS**  
SHANE & AMANDA TALKINGTON

Belfield, ND • (701) 290-7222 •   
[www.TalkingtonAngusRanch.com](http://www.TalkingtonAngusRanch.com)



## ABOUT THE REGISTERED HEIFERS

We are excited to offer for the first time a sample of what we think are a top draft of registered heifer calves for your consideration. As we have mentioned in the past we are slowly starting to offer some top females to help us build a market for Maternal Power® registered females. We think this group of heifer calves is excellent and normally each one of these would have a place near the top of our replacement pen.



*the* **HERD BUILDING** *kind*





LOT 99 • S R BLACKCAP 401

LOT 99

**S R BLACKCAP 401**

BD: 1/31/2024 Reg #: 21153419

S A V Ease 0840  
**S A V Easy Street 2289**  
 S A V Emblynette 9801

Marcys Scale Crusher  
 S A V Blackcap May 1416  
 #S A V President 6847  
 S A V Emblynette 0084  
 #Sitz Broker 12985  
 Sitz Elsiemere 1655  
 Koupals B & B Fix It 6072  
 B&B Blackcap 4079

Dam's Prod.	1/120
Calving Interval	1st calf
Udder	10
Docility	8

Sitz Broker 11168  
**B&B Blackcap 2164**  
 B&B Blackcap 8030

BW	Adj. 205	WWR	CE	BW	WW	YW	Milk
76	709	120	3	2.1	76	129	25

LOT 100

**S R BONNIE BELLE 447**

BD: 3/6/2024 Reg #: 21153194

S A V America 8018  
**S A V Glory Days 1832**  
 #S A V Madame Pride 3145

#S A V President 6847  
 S A V Madame Pride 0075  
 #S A V Priority 7283  
 S A V Madame Pride 1171  
 #N Bar Emulation EXT  
 #N Bar Primrose Y3051  
 #O C C Paxton 730P  
 #S R Bonnie Belle 980

Dam's Prod.	5/109
Calving Interval	354
Udder	9.5
Docility	10

#Sinclair Emulation XXP  
**S R Bonnie Belle 8100**  
 #S R Bonnie Belle 104

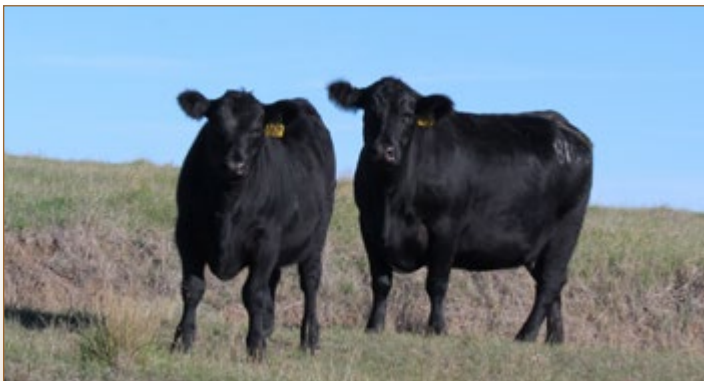
BW	Adj. 205	WWR	CE	BW	WW	YW	Milk
90	713	118	-3	5.2	80	140	23



LOT 100 • S R BONNIE BELLE 447



S R Bonnie Belle 358 • Full sister to Lot 100



S R Bonnie Belle 8100 and a Maternal Sister to Lot 100





LOT 101 • S R POLLY 458

**LOT 101**

**S R POLLY 458**

BD: 3/7/2024

Reg #: 21153161

S A V America 8018  
**S A V Glory Days 1832**  
 #S A V Madame Pride 3145  
 #Bruin Torque 5261  
**S R Polly 0174**  
 S R Polly 778

#S A V President 6847  
 S A V Madame Pride 0075  
 #S A V Priority 7283  
 S A V Madame Pride 1171  
 #S A V 004 Density 4336  
 Falcon Blackbird 6071  
 #S A V Resource 1441  
 S R Polly 804

Dam's Prod.	3/101
Calving Interval	352
Udder	10
Docility	10

BW	Adj. 205	WWR	CE	BW	WW	YW	Milk
90	660	110	-1	5.2	78	141	23

**LOT 102**

**S R BEAUTY 439**

BD: 3/5/2024

Reg #: 21153187

S A V America 8018  
**S A V Glory Days 1832**  
 #S A V Madame Pride 3145  
 #Bruin Torque 5261  
**S R Beauty 984**  
 S R Beauty 517

#S A V President 6847  
 S A V Madame Pride 0075  
 #S A V Priority 7283  
 S A V Madame Pride 1171  
 #S A V 004 Density 4336  
 Falcon Blackbird 6071  
 #S A V Resource 1441  
 S R Beauty 953

Dam's Prod.	3/104
Calving Interval	363
Udder	10
Docility	10

BW	Adj. 205	WWR	CE	BW	WW	YW	Milk
86	683	113	3	3.7	75	137	21



LOT 102 • S R BEAUTY 439





LOT 103 • S R BARBARAMERE NELL 415

**LOT 103**

**S R BARBARAMERE NELL 415**

BD: 3/2/2024

Reg #: 21153374

#KG Justified 3023  
**LT Firesteel 1123**  
 LT Erica 8120

#Mohnen Substantial 272  
**S R Barbaramere Nell 017**  
 S R Barbaramere Nell 821

Connealy Judgment  
 KG Miss Magic 1443  
 #Connealy Confidence Plus  
 LT Erica 0121  
 #Benfield Substance 8506  
 Mohnen Glyn Mawr Elba 1758  
 #Koupal Advance 28  
 S R Barbaramere Nell 6140

Dam's Prod.	3/106
Calving Interval	362
Udder	9
Docility	10

BW	Adj. 205	WWR	CE	BW	WW	YW	Milk
76	660	110	5	0.6	72	122	30



SR Barbaramere Nell 017 and Lot 103

**LOT 104**

**S R EMMA E 434**

BD: 3/5/2024

Reg #: 21153061

#KG Justified 3023  
**LT Firesteel 1123**  
 LT Erica 8120

#Sitz Stellar 726D  
**S R Emma E 215**  
 S R Emma E 927

Connealy Judgment  
 KG Miss Magic 1443  
 #Connealy Confidence Plus  
 LT Erica 0121  
 #Mohnen Substantial 272  
 SITZ Pride 200B  
 #S A V Raindance 6848  
 S R Emma E 4210

Dam's Prod.	1/112
Calving Interval	1st calf
Udder	9
Docility	8.5

BW	Adj. 205	WWR	CE	BW	WW	YW	Milk
76	659	112	1	2.1	77	136	26

**LOT 105**

**S R PRIDE 419**

BD: 3/3/2024

Reg #: 21153066

#KG Justified 3023  
**LT Firesteel 1123**  
 LT Erica 8120

#Basin Rainmaker 4404  
**S R Pride 262**  
 S R Pride 072

Connealy Judgment  
 KG Miss Magic 1443  
 #Connealy Confidence Plus  
 LT Erica 0121  
 Basin Rainmaker 2704  
 Basin Joy 1036  
 #H A Power Alliance 1025  
 Sitz Pride 2188

Dam's Prod.	1/104
Calving Interval	1st calf
Udder	8.5
Docility	10

BW	Adj. 205	WWR	CE	BW	WW	YW	Milk
69	615	104	1	2.2	64	115	30

The ideal Angus cow is hard to make, but when she's backed by **MATERNAL POWER®**, SHE'S HARD TO BEAT!





LOT 106 • S R LADY BLUE 4102



LOT 107 • S R TRAVETTE 456

LOT 106

**S R LADY BLUE 4102**

BD: 3/12/2024 Reg #: 21153111

Basin Rainmaker 2704 #Basin Rainmaker 4404 Basin Joy 1036	#Basin Rainmaker P175 #Basin Erica 7520 BV #Basin Payweight 107S Basin Joy 566T	Dam's Prod. 3/110
#Tehama Blackcap Revolution S R Lady Blue 095 #S R Lady Blue 7107	#Tehama 717 Band 876 #Tehama Blackcap E406 #Sinclair Emulation XXP S R Lady Blue 118	Calving Interval 364
		Udder 9.5
		Docility 10

BW	Adj. 205	WWR	CE	BW	WW	YW	Milk
66	656	109	7	0.4	70	114	30

LOT 107

**S R TRAVETTE 456**

BD: 3/7/2024 Reg #: 21156037

Basin Rainmaker 2704 #Basin Rainmaker 4404 Basin Joy 1036	#Basin Rainmaker P175 #Basin Erica 7520 BV #Basin Payweight 107S Basin Joy 566T	Dam's Prod. 3/107
#Tehama Blackcap Revolution S R Travette 0102 #S R Travette 7158	#Tehama 717 Band 876 #Tehama Blackcap E406 #Sinclair Emulation XXP S R Travette 223	Calving Interval 366
		Udder 7
		Docility 10

BW	Adj. 205	WWR	CE	BW	WW	YW	Milk
71	654	109	3	2.4	67	116	29



S R Bonnie Belle 408 • Maternal Granddam of Lot 108



S R Travette 7158 • Maternal Granddam of Lot 107

LOT 108

**S R BONNIE BELLE 475**

BD: 3/9/2024 Reg #: 21152882

Basin Rainmaker 2704 #Basin Rainmaker 4404 Basin Joy 1036	#Basin Rainmaker P175 #Basin Erica 7520 BV #Basin Payweight 107S Basin Joy 566T	Dam's Prod. 1/112
#Tehama Blackcap Revolution S R Bonnie Belle 2130 S R Bonnie Belle 408	#Tehama 717 Band 876 #Tehama Blackcap E406 #S A V Resource 1441 #S R Bonnie Belle 104	Calving Interval 1st calf
		Udder 9
		Docility 9

BW	Adj. 205	WWR	CE	BW	WW	YW	Milk
69	660	112	4	2.3	72	121	28



In June, Cooper recieved the FFA State Degree for his Welding SAE, which included many projects on the ranch, but none bigger than helping construct our development feedlot.





LOT 109 • S R BONNIE BELLE 4124

**LOT 109 S R BONNIE BELLE 4124**

BD: 3/14/2024

Reg #: 21153113

Basin Rainmaker 2704  
**#Basin Rainmaker 4404**  
 Basin Joy 1036

#Basin Rainmaker P175  
 #Basin Erica 7520 BV  
 #Basin Payweight 107S  
 Basin Joy 566T  
 #Tehama 717 Band 876  
 #Tehama Blackcap E406  
 #Sinclair Emulation XXP  
 #S R Bonnie Belle 104

Dam's Prod.	2/108
Calving Interval	345
Udder	8.5
Docility	10

#Tehama Blackcap Revolution  
**S R Bonnie Belle 090**  
 #S R Bonnie Belle 7131

BW	Adj. 205	WWR	CE	BW	WW	YW	Milk
77	686	114	2	3	72	122	29



LOT 110 • S R CLOVA PRIDE 4189

**LOT 110 S R CLOVA PRIDE 4189**

BD: 4/2/2024

Reg #: 21153134

Basin Rainmaker 2704  
**#Basin Rainmaker 4404**  
 Basin Joy 1036

#Basin Rainmaker P175  
 #Basin Erica 7520 BV  
 #Basin Payweight 107S  
 Basin Joy 566T  
 #Tehama 717 Band 876  
 #Tehama Blackcap E406  
 #Sinclair Emulation XXP  
 #S R Clova Pride 315

Dam's Prod.	3/107
Calving Interval	376
Udder	8.5
Docility	10

#Tehama Blackcap Revolution  
**S R Clova Pride 0165**  
 S R Clova Pride 758

BW	Adj. 205	WWR	CE	BW	WW	YW	Milk
84	624	104	-1	3.7	68	115	28

*In May, we happily welcomed Kacie Vejraska as our 2024 Summer Intern. Vejraska is no stranger to hard work, having grown up on the Sunny Okanogan Angus Ranch in Omak, Washington, and being an active member of the National Junior Angus Association. Kacie is finishing her degree in Animal Science from Kansas State University and plans to pursue a career in agriculture on top of raising Angus cattle.*



*Applications for our 2025 Summer Internship will be available in March. Watch our website and Facebook page for details and encourage your favorite student to apply!*

*"Only dead fish go with the flow."*

- Ian Vivers, Eaglehawk Angus





LOT 111 • S R WINTRESS 403

**LOT 111**

**S R WINTRESS 403**

BD: 2/19/2024

Reg #: 21153062

#KG Justified 3023  
**LT Firesteel 1123**  
 LT Erica 8120  
  
 Koupals B&B Infinity 9012  
**Koupals D&K Wintress 222**  
 Koupal Wintress 929

Connealy Judgment  
 KG Miss Magic 1443  
 #Connealy Confidence Plus  
 LT Erica 0121  
 Koupals B&B Detail 7070  
 #B&B Zara 6078  
 Koupal Olympian 533  
 Koupal Wintress 215

Dam's Prod.	1/117
Calving Interval	1st calf
Udder	9.5
Docility	10

BW	Adj. 205	WWR	CE	BW	WW	YW	Milk
81	691	117	-3	3.4	76	132	30

**LOT 112**

**S R MISS WIX 491**

BD: 3/11/2024

Reg #: 21153056

S A V America 8018  
**S A V Glory Days 1832**  
 #S A V Madame Pride 3145  
  
 #Bruin Torque 5261  
**S R Miss Wix 9113**  
 #S R Miss Wix 591

#S A V President 6847  
 S A V Madame Pride 0075  
 #S A V Priority 7283  
 S A V Madame Pride 1171  
 #S A V 004 Density 4336  
 Falcon Blackbird 6071  
 #S A V Resource 1441  
 Miss Wix 114 of Circle V

Dam's Prod.	4/97
Calving Interval	361
Udder	9
Docility	10

BW	Adj. 205	WWR	CE	BW	WW	YW	Milk
77	601	100	5	3.1	67	125	21

**LOT 113**

**S R LADY BLUE 467**

BD: 3/8/2024

Reg #: 21153059

S A V America 8018  
**S A V Glory Days 1832**  
 #S A V Madame Pride 3145  
  
 #Bruin Torque 5261  
**S R Lady Blue 1103**  
 S R Lady Blue 665

#S A V President 6847  
 S A V Madame Pride 0075  
 #S A V Priority 7283  
 S A V Madame Pride 1171  
 #S A V 004 Density 4336  
 Falcon Blackbird 6071  
 #S A V Resource 1441  
 #S R Lady Blue 203

Dam's Prod.	2/105
Calving Interval	365
Udder	10
Docility	6.5

BW	Adj. 205	WWR	CE	BW	WW	YW	Milk
74	566	94	5	3.1	69	125	21



"Sometimes, you've got to **look back** to *look forward.*" - Max Tweedie, Hallmark Angus



S R Lady Blue 665 • Maternal Granddam of Lot 113





LOT 114 • S R CLOVA PRIDE 402

**LOT 114 S R CLOVA PRIDE 402**

BD: 2/17/2024 Reg #: 21153154

S A V America 8018	#S A V President 6847	<table border="1"> <tr><td>Dam's Prod.</td><td>3/99</td></tr> <tr><td>Calving Interval</td><td>355</td></tr> <tr><td>Udder</td><td>9.5</td></tr> <tr><td>Docility</td><td>9</td></tr> </table>	Dam's Prod.	3/99	Calving Interval	355	Udder	9.5	Docility	9
Dam's Prod.	3/99									
Calving Interval	355									
Udder	9.5									
Docility	9									
<b>S A V Glory Days 1832</b>	S A V Madame Pride 0075									
#S A V Madame Pride 3145	#S A V Priority 7283									
	S A V Madame Pride 1171									
#Bruin Torque 5261	#S A V 004 Density 4336									
<b>S R Clova Pride 0172</b>	Falcon Blackbird 6071									
#S R Clova Pride 315	#O C C Paxton 730P									
	S R Clova Pride 725									

BW	Adj. 205	WWR	CE	BW	WW	YW	Milk
72	584	97	7	1.8	65	115	21



S R Clova Pride 315 • Maternal Granddam of Lot 114

**LOT 115 S R LADY BLUE 461**

BD: 3/8/2024 Reg #: 21153058

S A V America 8018	#S A V President 6847	<table border="1"> <tr><td>Dam's Prod.</td><td>2/106</td></tr> <tr><td>Calving Interval</td><td>342</td></tr> <tr><td>Udder</td><td>7.5</td></tr> <tr><td>Docility</td><td>10</td></tr> </table>	Dam's Prod.	2/106	Calving Interval	342	Udder	7.5	Docility	10
Dam's Prod.	2/106									
Calving Interval	342									
Udder	7.5									
Docility	10									
<b>S A V Glory Days 1832</b>	S A V Madame Pride 0075									
#S A V Madame Pride 3145	#S A V Priority 7283									
	S A V Madame Pride 1171									
#Bruin Torque 5261	#S A V 004 Density 4336									
<b>S R Lady Blue 1106</b>	Falcon Blackbird 6071									
S R Lady Blue 661	#S A V Resource 1441									
	S R Lady Blue 118									

BW	Adj. 205	WWR	CE	BW	WW	YW	Milk
91	636	106	-2	5.6	74	134	21



S R Clova Pride 725 • Maternal Great Granddam of Lot 114



# H1

## COMMERCIAL REPLACEMENT HEIFER CALVES

### 50 REPLACEMENT HEIFER CALVES FROM GIANNONATTI RANCH, LUDLOW, SD

We are excited to offer this beautiful set of Maternal Power® replacement heifer calves that originated from the Giannonatti Ranch. Lance, Nel and their kids Sydney and Bracin, along with Lance's mother Cora, ranch near Ludlow, SD in Harding county. Their grass-based management system requires females that go out and work for a living. Females that don't work are promptly culled from the system. Lance is a student of the cattle business with a keen eye and really studies the catalog and bulls on sale day. They have been long-time Strommen Ranch customers purchasing sons of Capitalist, XXP, Torque and Right Time and have utilized an AI program on their heifers.

These heifers are Bangs vaccinated are guaranteed open and breedable. They have been on a full health and mineral program including vaccination protocol both spring and fall and poured twice with Clean-Up II. These March and April heifers are estimated to weigh 725 but we will have an accurate weight taken just before sale day.

These heifers would be a tremendous addition to any operation as they will be hard-working, productive females. They come with an added marketing advantage as they directly qualify for the Badlands Angus Alliance sale in December when they are bred to Strommen Ranch calving-ease bulls.



*the* **HERD BUILDING** *kind*







WE'RE IN THIS TOGETHER!




**STROMMEN RANCH DELIVERS:**

- Two sales with two ages of bulls:  
**Spring Sale:** Yearlings & 2-Year-Olds  
**Fall Sale:** Coming 2-Year-Olds
- Free delivery within 500 miles.
- Full 90-day breeding season guarantee.
- Fertility tested; Freeze branded.
- Bulls that aren't overfed.
- Large sire groups.
- **Exclusive marketing assistance.**
  - Badlands Angus Alliance Sales.
  - Commercial Female Listing.
- *Your satisfaction is our top priority.*

**OUR CUSTOMERS' SUCCESS MEANS A GREAT DEAL TO US.**

**Every decision we make is weighed against one question: Will this positively impact the operations of our customers?** Our commitment to customer service is year-long, beginning with genetic selection all the way through marketing assistance for our customers' bred heifers and replacement heifer calves.

**AT STROMMEN RANCH, WE:**

- Take a balanced approach to genetic improvement - on both sides of the pedigree.
- Develop our bulls responsibly.
- Require our cowherd to excel in a no-frills environment. No creep. Ever.
- Stand behind our bulls with one of the strongest guarantees in the industry.
- Build demand for Strommen Ranch-influenced females through exclusive marketing venues such as the Badlands Angus Alliance Sales and our Commercial Female List. 



**BUILDING  
DEMAND  
FOR YOUR  
HEIFERS**

We are proud of the herds our customers are developing with Strommen Ranch genetics and that is why **we strive to help them capture additional value for their females** through the Badlands Angus Alliance, where customers of Strommen Ranch, Talkington Angus and Best Angus have marketed nearly 4,000 bred females since 2018. Many of those heifers have commanded a \$200 to \$500 per head premium over other bred heifer sales in the region! The Badlands Angus Alliance continues to be the **premier sale in western North Dakota for source and genetic verified Angus replacement females.** It demonstrates the strong demand we've helped build for genetically sourced cattle of maternal pedigree.





Cow	Wt	Sex	BO	BW	Sex	LE	Wt	Temp	ET
681	195	REV 408	3-19	85	B	1	10	10	ET
525	196	REV 4210	3-19	86	H	1	6	6	ET
9307	197	RF	3-19	64	B	1	7	7	STEER
831	198	WS	3-19	67	H	1	8	9	
774	199	TOR	3-20	72	H	1	7	10	
7158	1100	LM	3-20	91			8.5	10	
994	1101	SUB	3-20	77				7	
045	1102	REV 408	3-20	97					
665	1103	TOR	3-20						
7162	1104	REV 4210	3-20						
985	1105	RF	3-20						
661	1106	TOR	3-						
8157	1107	HON							
533	1108	TOR							
8166	1109	W							
6160	1110								
5215	1111								



2022

Integrated Resource Management  
Dedicated to improving the economic efficiency of cattle operations through effective herd keeping

202



# HOW DO WE USE IT AT STROMMEN RANCH?



**WEANING RATIO:** Why don't more seedstock suppliers provide ratios? For every bull above 100 (which is average), there is 1 below 100. Many seedstock suppliers don't show ratios because they don't want you to see how many below-average bulls they are selling. We think it's extremely important to be up front and honest and provide weaning ratios on every bull to show our customers how they rank within their contemporary group.

**CALVING INTERVAL:** An indicator of the most profitable trait in the beef business—Fertility. We believe this is the best measure of a cow's fertility and longevity. A calving-interval combined with annual production shows that a cow has had a calf every year and on schedule. In my experience working and traveling for Genex for many years, I was able to see, first-hand, countless purebred females that didn't pay their way. They were open or didn't raise a calf and rolled into the next year getting a free pass for sub-par fertility or poor mothering ability. There is no room for a dry cow at Strommen Ranch. If they are open or dry, they are culled. Our donor cows are also expected to calve annually, which isn't common practice. We don't believe in a free pass.

**DISPOSITION SCORE:** We are one of the only breeders that provides a disposition score for the mothers to our bulls. This score is taken the day they calve on a scale from 1-10. 10 denotes perfect mothering ability in all facets from getting the calf pushed out, to getting the calf licked off and up to nurse, then standing calmly and quietly for that first suckle. We don't make any excuses for cows that can't get their job done. We don't have 15 employees here to watch every cow at every minute. We expect them to absolutely do it on their own and in a manner that is safe for the cow, the calf and us while we weigh and tag the calves.

**UDDER SCORE:** We also provide an udder score. Udder quality is very important to us. We like a beautiful Angus female with a feminine front, big bodied with excellent feet and a superb udder. Our udder score is collected the day the calf is born, which is the day it matters the most. We score udders from 1-10 with a 10 being level-uddered with excellent forward attachment, small teat size placed evenly apart and equal quarters with definite distinction between each quarter. We don't tolerate swing-bags, large teats, tilted or uneven quarters. We also don't want those huge bags that are so low

to the ground that it takes a calf 4-6 hours to figure it out. I've seen it and don't want anything to do with it. Milking ability and volume is good, to a point, but it is no longer desirable when a calf can't attach and nurse or mastitis sets in because of the volume. If we have to get a cow in to touch her udder, she is automatically culled and her calf is immediately pulled off. We don't have the time and know our customers don't either.

**FOOT SCORES:** This is a score you won't find here. I think foot scoring is laughable. They are either good or gone. Period. End of story. And, let me tell you, the EPD's don't tell the story. It's nearly impossible for us to find an outside bull to use because we are that skeptical of others' ability to accurately collect and report foot scores. This problem is exacerbated by those breeders who are rapidly turning generations on the next latest-and-greatest sire before knowing or understanding what they have on the ground today. We aren't perfect for foot quality, no breeder is. There is a difference though! If a breeder tells you they don't have any issues with foot quality, run away fast. We are doing our due diligence to select cattle that have excellent foot quality and we will not compromise our standards.





*This summer Cassidy had an amazing opportunity to intern at Eaglehawk Angus in Australia, a program we've admired for years. Ian and Sally Vivers and their family were incredible hosts and mentors as they showed all of us what it takes to be a successful, multi-generation seedstock operation. Cassidy's internship culminated with the family's bull sale, which Aaron and Sheyna also attended. After the sale, the Vivers treated us to an exclusive tour of Australia's cattle industry featuring other interesting Angus operations, countless kangaroos and wallabies grazing beside Angus cattle, fish and chips at the ocean, waterfalls and the best home-brewed coffee you'd find anywhere in the world!*



*From Australia, we flew to New Zealand where we stayed with good friends and fellow Angus producers Max and Lucy Tweedie of Hallmark Angus. Like Eaglehawk, the Tweedies have an exceptional herd of easy-fleshing, maternally oriented Angus cattle and a real passion for doing things the right way. Their soil structure, year-long grazing rotations, above-ground watering systems and use of sheep in the highest elevations were very interesting and the views absolutely breathtaking. The Tweedies recently welcomed their first son, McLean, and we can't wait to meet him one day!*



*Females in this Hallmark Angus paddock ranged in age from 10-17 years!*





# SOMETHING FOR EVERYONE?

## NOT HERE. LET ME EXPLAIN:

A lot of pride and effort goes into building our cowherd. Our goal is to have very similar phenotype in each and every animal with a slightly different, but very similar, pedigree base. We believe you can go home with any of our bulls and get a consistent product. We don't have something for everyone. We don't have terminal, carcass-type cattle. We also don't have the extreme high-performance cattle. They require too many profit-scalping inputs. They simply don't work for us financially, in our environment, or in our customers' environment.

What we do have is genetics with a maternally focused base that have been selected and sorted for the profitable traits that commercial cattlemen need to generate income. We think the value of buying genetics from someone that has a designed breeding program is knowing what you are getting and expecting that every bull will have a maternal lineage that fits our standards for what we value in good Angus females. We also believe that your herd will look very similar to the seedstock provider you buy your bulls from. If you buy from someone that has a shotgun, mix-and-match approach to breeding cattle, it will show in your cow herd and in your calf crop with extreme inconsistency.



*Pictured are a few of the Strommen Ranch Bulls we've sold since 2019.*







# BRUIN TORQUE 5261

**AAA #: 18248293** • There are three things Torque does better than any bull we have ever used – he adds body length, improves disposition and he stands on a tremendous foot. He works great on those big-bodied, easy-fleshing females that need spine length and extension up front. He improves disposition and foot quality, all while maintaining maternal function and power. His sons consistently sell at the top of our sales and we truly believe the best is yet to come with the 60+ Torque daughters we've retained in our herd.





**AAA #: 19932195** • This moderate-framed, tank of a bull is backed by generations of Maternal POWER® His productive and fertile Pathfinder dam has settled to A.I. every year and posts BWR 7/92 and WWR 7/106 and a calving interval of 369 days. For docile, good-footed, moderated sized cows that wean a high percentage of their body weight, **look no further than SILVERADO!**



# SR SILVERADO 083

Born & raised at Strommen Ranch. Owned by Genex, CRI.



# SAV EASY STREET 2289

**AAA #: 20473600** • We acquired SAV Easy Street 2289 with our friends at Select Sires Argentina & Juan Debernardi-Carne. We thought he was the true highlight calving ease bull of the 2023 Schaff Angus Valley sale.

Easy Street's beautifully uddered President dam has a birth ratio of 2@87. His maternal granddam has a birth ratio of 10@93 and his great granddam has a birth ratio of 10@95. His second and third dams both produced beyond 12 years of age, proving not only their fertility, but their longevity, as well. This makes us very confident in Easy Street's potential to be a long-term calving-ease bull that will leave behind beautiful, productive, long-lasting females.

We expect this gentle-disposition bull to make beautiful females in a calving-ease package.



**For semen on these bulls or to book custom AI services, contact us!**

Aaron & Sheyna Strommen • Solen, N.D. • (701) 290-7983 • [f](#) [s](#) [i](#)

[www.StrommenRanch.com](http://www.StrommenRanch.com)





**Aaron & Sheyna Strommen**  
1550 70th St Box 7  
Solen, ND 58570  
[www.StrommenRanch.com](http://www.StrommenRanch.com)

**Time Sensitive Material  
Please Deliver Immediately!**



*We invite you to join us for the*  
**MATERNAL POWER<sup>®</sup>**  
**ANGUS BULL SALE**  
3 PM · FEB. 15, 2025 · SOLEN, N.D.

**YOU'RE ALWAYS  
WELCOME AT  
STROMMEN RANCH!**  
Video#3: Take a virtual ranch  
tour simply by scanning this  
QR code with your smart  
phone's camera app.



*Selling* **100** Yearling &  
2-Yr Old  
Registered  
ANGUS Bulls  
**17** Registered  
Heifer Calves  
**50** Commercial  
Replacement  
Heifer Calves



**FOCUSED ON THE TRAITS THAT HELP  
COMMERCIAL CATTLEMEN BRING CHECKS TO THE BANK!**

VISITORS ALWAYS WELCOME! Visit us at the ranch, online at [www.StrommenRanch.com](http://www.StrommenRanch.com), or on these social media platforms:

