

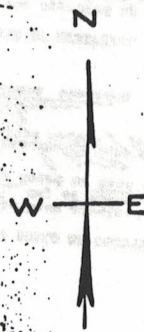
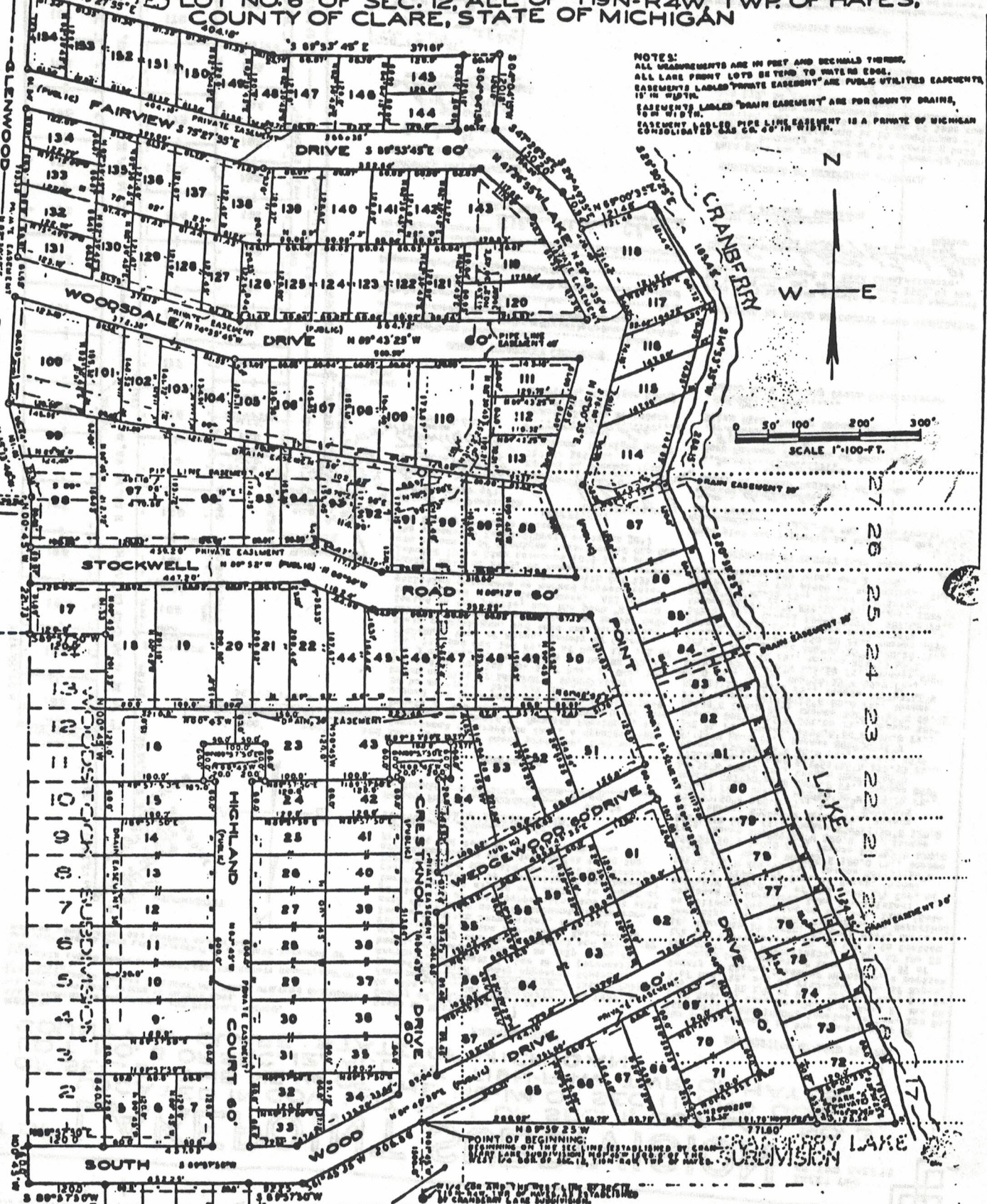
PLAT OF "LAKEPOINT SUBDIVISION"

SHEET 1 OF 2 SHEETS.

LOCATED IN GOV. LOT NO. 1 OF SEC. 1, GOV. LOT NO. 3 OF SEC. 2, THE NE-1/4 OF THE NE-1/4 OF SEC. 11, AND GOV. LOT NO. 6 OF SEC. 12, ALL OF T19N-R4W, TWP. OF HAYES, COUNTY OF CLARE, STATE OF MICHIGAN

UNPLATTED

NOTES:
ALL MEASUREMENTS ARE IN FEET AND DECIMALS THEREOF.
ALL LINES FROM LOTS EXTEND TO WATER EDGE.
EASEMENTS LABELED "PRIVATE EASEMENT" ARE PUBLIC UTILITIES EASEMENTS, 15' IN WIDTH.
EASEMENTS LABELED "DRAIN EASEMENT" ARE FOR COUNTY DRAINS, 10' IN WIDTH.
EASEMENTS LABELED "PIPE LINE EASEMENT" IS A PRIVATE OF MICHIGAN CONSOLIDATED GAS CO. 6" IN WIDTH.



SCALE 1"=100'-FT.

27
26
25
24
23
22
21

POINT OF BEGINNING:
BEGINNING ON THE SEC. LINE ESTABLISHED BY GRANT
MAY 18 2ND 1837 IN THE COUNTY OF CLARE, STATE OF MICHIGAN
SUBDIVISION

NOTE: HARRISBURG STRIKE
WAS LATER ABANDONED & LATER
RE-LOCATED TO 2-31

