

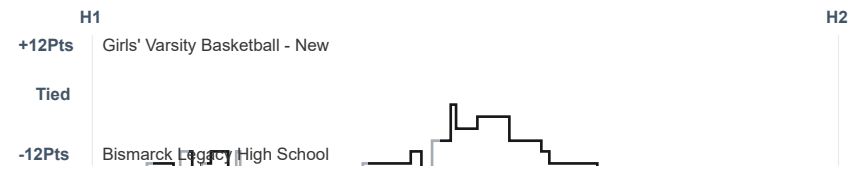
Box Score Report

MHS vs Bismarck Legacy - Jan 28, 2020 - L 64-75

Period Stats

Team	1	2	Final
MHS	36	28	64
LHS	43	32	75

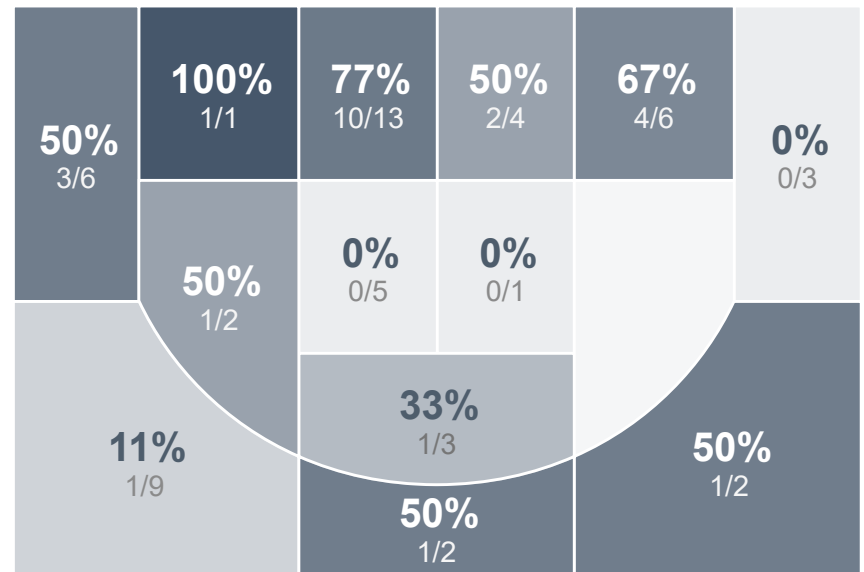
Run Graph



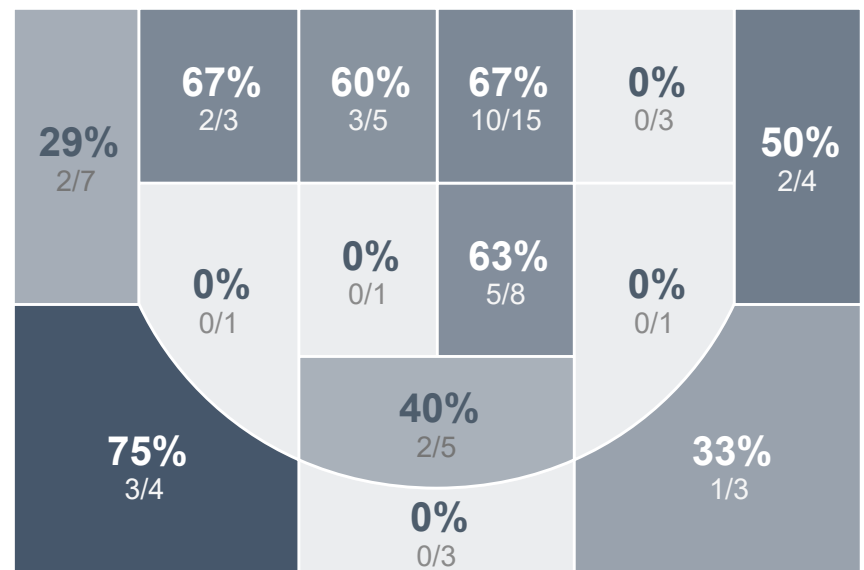
Team Stats

	MHS	LHS
Field Goal %	43.9%	47.6%
Effective Field Goal %	49.1%	54.0%
2FG Made/Attempted	19/35	22/42
2FG%	54.3%	52.4%
3FG Made/Attempted	6/22	8/21
3FG%	27.3%	38.1%
FT Made/Attempted	8/12	7/12
Free Throw Percentage	66.7%	58.3%
Points Per Possession	0.95	1.12
Transition Points	2	15
Points Off Turnovers	7	14
Second Chance Points	13	10
Points in the Paint	24	36
Offensive Rebounds	7	12
Defense Rebounds	22	27
Assists	13	14
Deflections	11	8
Steals	5	8
Blocks	1	3
Turnovers	12	10
Personal Fouls	9	13
Charges Taken	0	0

Girls' Varsity Basketball - New



Bismarck Legacy High School



Girls' Varsity Basketball - New's Player Stats

Name	Pts	FG	3FG	FT	+/-	MINS	OREB	DREB	AST	DEFL	STL	BLK	TO	FOUL	CHG
#14 Maria Moore	2	1/7	0/4	0/0	- 3	29	2	0	2	3	0	0	3	0	0
#15 Faith Eberle	0	0/0	0/0	0/0	- 9	3	0	0	0	0	0	0	0	0	0
#20 Aleah Clarke	8	3/4	1/2	1/2	+ 6	19	0	2	2	2	1	0	1	2	0
#23 Amaya Ramsey	0	0/2	0/2	0/0	- 9	21	1	3	1	1	0	0	0	0	0
#25 Piper Harris	8	3/6	2/5	0/0	- 8	26	0	2	0	0	2	0	4	2	0
#32 Jordan Toman	2	0/0	0/0	2/2	+ 4	3	1	0	0	0	0	0	0	0	0
#34 Lakyn Darras	16	7/17	0/2	2/3	- 25	30	1	11	2	0	0	1	1	1	0
#40 Taylor Leingang	8	3/4	1/2	1/2	0	19	0	0	2	1	1	0	0	2	0
#44 Sydney Gustavsson	20	8/17	2/5	2/3	- 11	33	2	1	4	4	1	0	3	2	0

Bismarck Legacy High School's Player Stats

Name	Pts	FG	3FG	FT	+/-	MINS	OREB	DREB	AST	DEFL	STL	BLK	TO	FOUL	CHG
#12 Mac Boone	22	9/18	3/6	1/4	+ 22	31	5	2	0	2	2	1	1	1	0
#13 Alexis Dressler	17	7/13	3/7	0/0	+ 21	26	2	8	5	1	1	0	0	2	0
#21 Alayna Hill	7	3/3	1/1	0/0	- 1	17	0	2	3	0	1	0	0	0	0
#23 Arianna Berryhill	6	1/6	1/2	3/4	+ 12	29	0	3	2	1	1	0	4	1	0
#24 Kaylee Olson	4	2/3	0/1	0/0	+ 6	9	0	0	0	0	1	0	0	1	0
#25 Sidney Kautz	0	0/1	0/1	0/0	- 7	5	0	0	0	1	0	0	1	0	0
#30 Jaiden Baker	11	4/12	0/2	3/4	+ 7	27	2	5	2	3	2	1	1	2	0
#32 Ashton Sagaser	6	3/6	0/1	0/0	- 5	18	1	1	1	0	0	0	1	4	0
#44 Hannah Stymeister	2	1/1	0/0	0/0	0	20	0	4	1	0	0	1	2	2	0